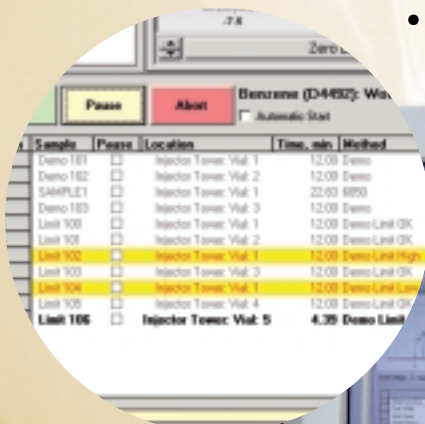



Advanced yet so simple, anyone can use it

Cerity Networked Data System for Chemical QA/QC

Ideal for routine analyses in petroleum
and chemical industries



Sample	Phase	Location	Time, min	Method
Demo 181	<input type="checkbox"/>	Injector Tower: Vial: 1	12.00	Demo
Demo 182	<input type="checkbox"/>	Injector Tower: Vial: 2	12.00	Demo
SAMPLE1	<input type="checkbox"/>	Injector Tower: Vial: 1	22.00	0850
Demo 183	<input type="checkbox"/>	Injector Tower: Vial: 3	12.00	Demo
Unit 100	<input type="checkbox"/>	Injector Tower: Vial: 1	12.00	Demo: Limit OK
Unit 101	<input type="checkbox"/>	Injector Tower: Vial: 2	12.00	Demo: Limit OK
Unit 102	<input type="checkbox"/>	Injector Tower: Vial: 1	12.00	Demo: Limit High
Unit 103	<input type="checkbox"/>	Injector Tower: Vial: 3	12.00	Demo: Limit OK
Unit 104	<input type="checkbox"/>	Injector Tower: Vial: 1	12.00	Demo: Limit Low
Unit 105	<input type="checkbox"/>	Injector Tower: Vial: 4	12.00	Demo: Limit OK
Unit 106	<input type="checkbox"/>	Injector Tower: Vial: 5	4.39	Demo: Limit



Agilent Technologies



From inception to final product,
Cerity Networked Data System (NDS)
 for Chemical QA/QC has one goal:
ease of use in your laboratory.

Easy—just one screen

Analyses begin and end with the simplicity of one screen. You can:

- Schedule samples for analysis.
- Start the analysis.
- View the chromatograms in real time.
- See which samples are out of specification, with no interpretation required.

Like you, this software puts the sample, not instrument parameters, at the heart of each analysis. No more searching for long file names; you just enter the sample name or analysis to be performed. This keeps key strokes and screen changes to a minimum.



One screen controls all analyses. It displays the sample work list (1), the real-time signal plot (2), and system operational status (3). It also highlights an out-of-spec sample (4)—easily visible from a distance. Operators can then notify the appropriate person and continue running samples.

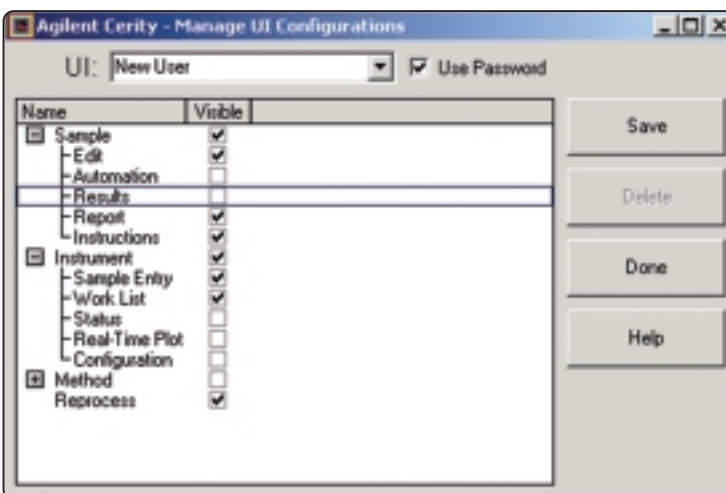
*Amazingly
 easy to use*

Cerity NDS

Designed to work the way you do.

Easy—see only what you need

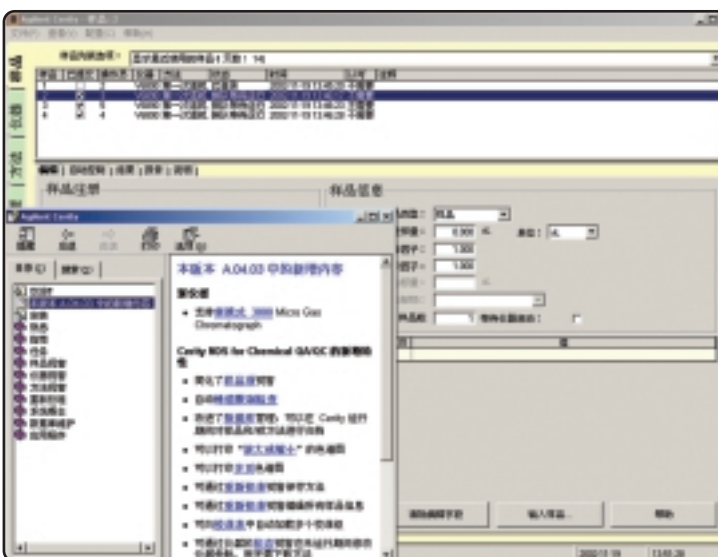
Cerity NDS for Chemical QA/QC can be configured to the individual needs and skills of each user.



The user interface screen can be configured so new users see only what they need. This reduces accidental mistakes and greatly minimizes training time. Functions can be added easily as needs and skill levels change.

Easy—9 different languages

All screens, on-line help, and tutorial are available in Brazilian Portuguese, Chinese, English, French, German, Italian, Japanese, Korean, and Spanish. This provides users a comfortable environment that speeds learning, reduces errors, and aids troubleshooting.



Easy—simple automation

It's simple to automatically schedule analyses for any time, every hour on the hour, every 17 minutes, or every other day. You just enter the time interval and tell the system when to start. This is a simple way to schedule periodic analyses on a production line.

Easy—automated limit checking

Users can specify high and low amounts for selected sample components. If a component is outside these limits, a message immediately appears in the work list and in the analytical report.

Benzene (04432): WorkList is Processing							
Automatic Start							
Position	Sample	Passes	Location	Time, min	Method	Results	Notes
10	Demo 101	<input type="checkbox"/>	Injector Tower: Vial: 1	12.00	Demo		
9	Demo 102	<input type="checkbox"/>	Injector Tower: Vial: 2	12.00	Demo		
8	SAMPLE1	<input type="checkbox"/>	Injector Tower: Vial: 1	22.00	GB50		
7	Demo 103	<input type="checkbox"/>	Injector Tower: Vial: 3	12.00	Demo		
6	Limit 100	<input type="checkbox"/>	Injector Tower: Vial: 1	12.00	Demo Limit OK		
5	Limit 105	<input type="checkbox"/>	Injector Tower: Vial: 2	12.00	Demo Limit OK		
4	Limit 100	<input type="checkbox"/>	Injector Tower: Vial: 5	12.00	Demo Limit High	Hi/Low	
3	Limit 103	<input type="checkbox"/>	Injector Tower: Vial: 3	12.00	Demo Limit OK		
2	Limit 104	<input type="checkbox"/>	Injector Tower: Vial: 5	12.00	Demo Limit Low	Hi/Low	
1	Limit 105	<input type="checkbox"/>	Injector Tower: Vial: 4	12.00	Demo Limit OK		
Current	Limit 106	<input type="checkbox"/>	Injector Tower: Vial: 5	4.39	Demo Limit OK		

Fast decision-making. Clearly visible notification of a component that is outside set limits allows fast, informed decision-making.

Learn first-hand how simple it is to develop and run routine samples.



Cerity NDS for Chemical QA/QC

Main Features

- **Complete control** of all GC parameters for the Agilent 4890D, 5890 Series II, 6850, 6890, M200, Quad, and 3000 Micro GCs
- Support for the 35900E A/D converter, to collect and analyze data from other **manufacturers' instruments**
- Control of **up to 8 active GC systems** at one time
- An integrated on-line help system and tutorial to **speed learning** and troubleshooting
- Ability to **pass data** to and from LIMS or Enterprise systems
- Data storage in **one comprehensive database**, for easy management and retrieval and for getting the right mixture of data, fast



Try it out!

Our FREE Cerity NDS for Chemical QA/QC Demo CD-ROM lets you try out this software. With built-in virtual GCs and data files, you can do everything except connect to a real GC and make an injection.

Learn first-hand how simple it is to develop and run routine samples. You can:

- Create a method
- Perform calibrations
- Run virtual samples

To get this Cerity CD-ROM, visit www.agilent.com/chem/nds. Select Cerity NDS for Chemical QA/QC and then click Demo CD to place your order.

For other detailed information about Cerity NDS for Chemical QA/QC, call 1-800-227-9770 in the U.S. or Canada. In other regions, please contact your local Agilent sales representative.

Information, descriptions, and specifications in this publication are subject to change without notice.

©Agilent Technologies, Inc. 2002

Printed in USA November 25, 2002
5988-8312EN

www.agilent.com/chem/nds
800-227-9770



Agilent Technologies