

Agilent 7000 Series Triple Quadrupole GC/MS System

Quick Start



Agilent Technologies

Notices

© Agilent Technologies, Inc. 2011

No part of this manual may be reproduced in any form or by any means (including electronic storage and retrieval or translation into a foreign language) without prior agreement and written consent from Agilent Technologies, Inc. as governed by United States and international copyright laws.

Manual Part Number

G7000-90042

Edition

First Edition, November 2011

Printed in USA

Agilent Technologies, Inc.
5301 Stevens Creek Boulevard
Santa Clara, CA 95052

Microsoft® is a U.S. registered trademark of Microsoft Corporation.

Warranty

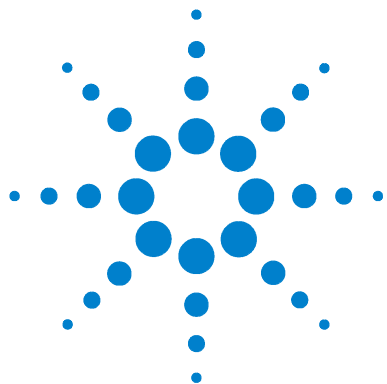
The material contained in this document is provided “as is,” and is subject to being changed, without notice, in future editions. Further, to the maximum extent permitted by applicable law, Agilent disclaims all warranties, either express or implied, with regard to this manual and any information contained herein, including but not limited to the implied warranties of merchantability and fitness for a particular purpose. Agilent shall not be liable for errors or for incidental or consequential damages in connection with the furnishing, use, or performance of this document or of any information contained herein. Should Agilent and the user have a separate written agreement with warranty terms covering the material in this document that conflict with these terms, the warranty terms in the separate agreement shall control.

Technology Licenses

The hardware and/or software described in this document are furnished under a license and may be used or copied only in accordance with the terms of such license.

Restricted Rights Legend

U.S. Government Restricted Rights. Software and technical data rights granted to the federal government include only those rights customarily provided to end user customers. Agilent provides this customary commercial license in Software and technical data pursuant to FAR 12.211 (Technical Data) and 12.212 (Computer Software) and, for the Department of Defense, DFARS 252.227-7015 (Technical Data - Commercial Items) and DFARS 227.7202-3 (Rights in Commercial Computer Software or Computer Software Documentation).



Agilent 7000 Series Triple Quadrupole GC/MS System Quick Start

Quick Start

About Your System	4
Concepts Guide	5
Familiarization Guides	6
Online Help With Software Demonstration Videos	7
Operation Manual	8
Troubleshooting and Maintenance Manual	9
Hydrogen Safety Manual	10

This book provides a brief summary of your system and each document written about it, and describes where to find the information.



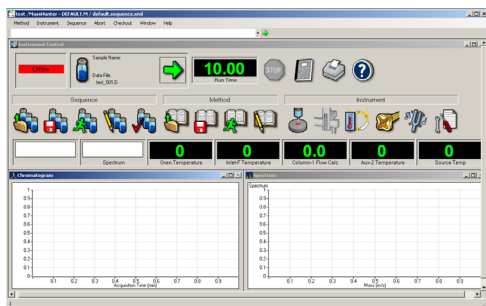
About Your System



The **Agilent 7000 Series Triple Quadrupole GC/MS** is a stand-alone triple quadrupole mass spectrometer for use with the Agilent 7890A Gas Chromatograph. The 7000 Series Triple Quadrupole features:

- One split flow turbomolecular vacuum pump
- Rotary vane foreline pump
- Independently MS heated electron-ionization ion source
- Two Independently MS heated hyperbolic quadrupole mass filters
- Single hexapole collision cell
- High-energy dynode (HED) electron multiplier detector
- Independently GC heated GC/MS interface

Read the Hydrogen Safety Manual, Concepts Guide, Operation Manual, and Troubleshooting and Maintenance Manual for information on your 7000 series instrument.

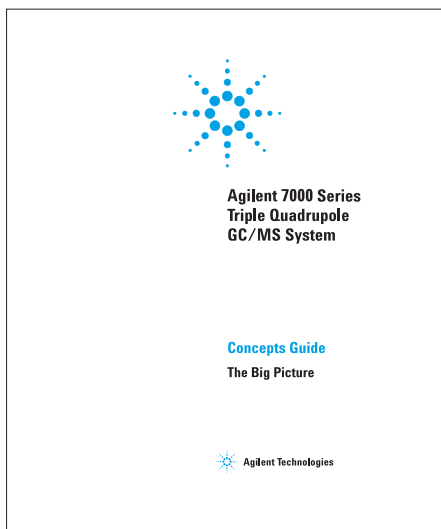


The **MassHunter GC/MS Acquisition software** features:

- Real-time plots which allow you to monitor the chromatograms and mass spectra as samples are analyzed
- A spreadsheet-like sequence table to make it easy for running multiple samples
- Easy-to-use controls for setting, monitoring, tuning the instrument, and creating acquisition methods

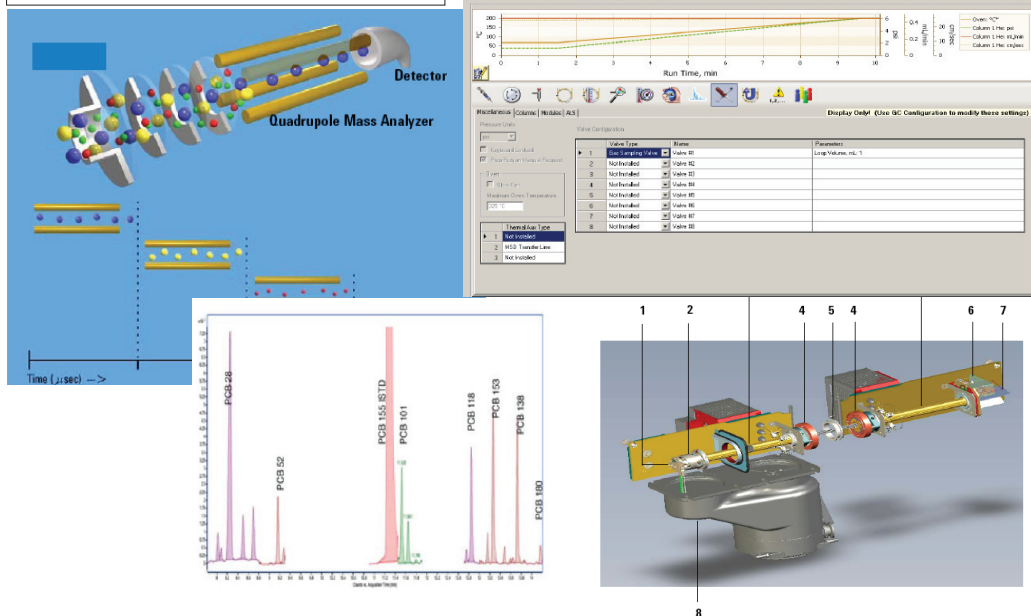
Read the Familiarization Guides, and Online Help, with extensive demonstration videos, for details on using your software.

Concepts Guide



To learn how your Agilent 7000 Series Triple Quadrupole GC/MS works in conjunction with the MassHunter software, take a look at the Concepts Guide. This document includes conceptual models, illustrations, screen captures, and detailed explanations for your easy reference.

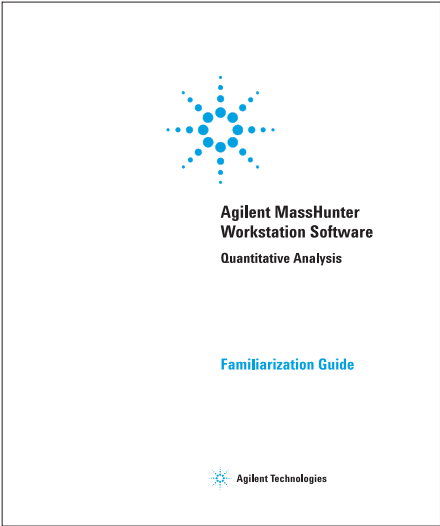
Included are sections on how backflushing works to improve GC separation, concepts behind the design of the Agilent MassHunter Workstation software, how the 7000 Series Triple Quadrupole GC/MS achieves high sensitivity, plus a lot more.



You can find this guide on the **GC and GC/MS Hardware User Information & Utilities DVD**.





Familiarization Guides

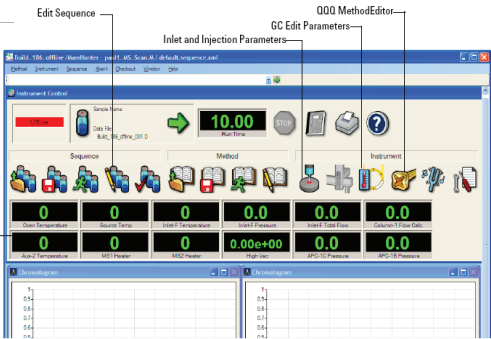


There are four Familiarization Guides available for this system. One for Data Acquisition, one for Quantitative Analysis, one for Qualitative Analysis, and one for Reporting*. They describe how to prepare your system for data acquisition, how to create acquisition, qualitative, and quantitative methods, and how to use the MassHunter Reporting features.

Additionally, the report designer material includes software demonstrations and interactive reviews plus quizzes with instant feedback.



Steps	Detailed Instructions	Comments
2	<p>(optional) If you see a different layout than the one in the figure on the previous page...</p> <ul style="list-style-type: none">If fewer than three windows are present in the main View, or they are in a different arrangement, restore the default layout.If the column settings are different than those you see in the figure above, restore the default column settings.If panes other than the Chromatogram pane are present in the Compound Information window, hide the other panes.	<ul style="list-style-type: none">The default layout is set at the factory and cannot be changed. If you want to create your own layout, see "Task 2, Change result window layouts" on page 49.
3	<p>Scroll from sample to sample until you reach the end of the Batch Table, and then return to Cal-L5.</p> <ul style="list-style-type: none">Use the Next Sample and Previous Sample arrows on the toolbar. <p>Note the changes in the Batch Table and Compound Information of amphetamine for each sample.</p> <ul style="list-style-type: none">Select sample Calib L4 in the Batch Table to view the Batch Table and Compound Information changes.	<p>a Click the Next Sample arrow  in the Batch Table Standard toolbar until the system displays the desired sample. Inspect the changes in the Compound Information window.</p> <p>b To return to Cal-L5, click the Previous Sample icon  in the Batch Table Standard toolbar.</p> <p>c Select any cell in the row for sample Calib_L4 in the Batch Table window to view the changes.</p> <ul style="list-style-type: none">Note the linkage between the highlighted data file in the Batch Table and the chromatogram in the Compound Information window.



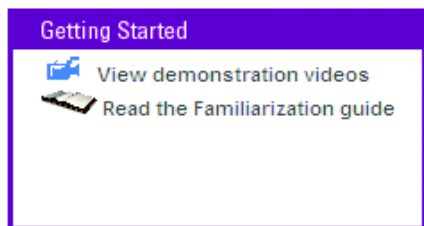
You can find the Familiarization Guides on the installation disk, in the **Manuals** folder.

*You can find the Reporting Familiarization Guide on the **MassHunter Reporting User Information DVD**.



Online Help With Software Demonstration Videos

Software demonstrations



Your online help system includes software demonstration videos on topics ranging from beginner to advanced user operations.

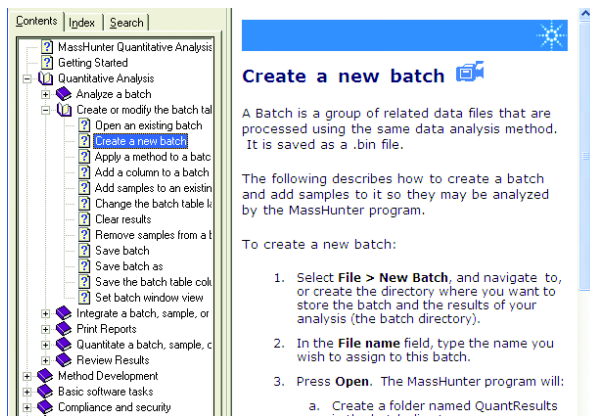
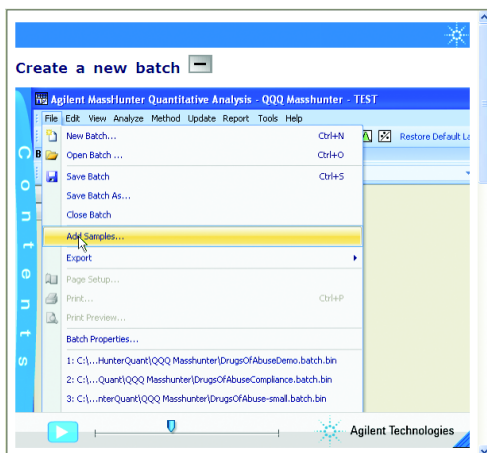
The Getting Started videos are designed to give you the information you need to start using your system quickly and efficiently. The advanced videos explain some of MassHunter's more intricate, but perhaps less frequently used functions.



Any topic with the camera icon has a video linked to it. Watch these videos to see a demonstration of using the described feature in your MassHunter Data Analysis software.

Step-by-step instructions

Most Help topics are written as detailed step-by-step instructions with links to other relevant material. So, even when videos are not included, reading these will help you complete your daily tasks.

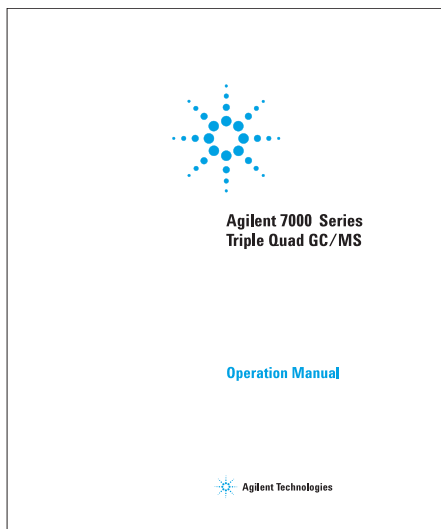


This information is included in online Help.

Press **F1** to access content sensitive online Help, or select **Help** from the Help menu.



Operation Manual



Your Agilent 7000 Series Triple Quadrupole GC/MS is extremely powerful and flexible.

Refer to the Operation Manual for extensive information on operating the instrument and performing routine maintenance on it. Included are step-by-step instructions and videos on installing GC columns, operating in electron impact (EI) mode, general maintenance procedures, and more.

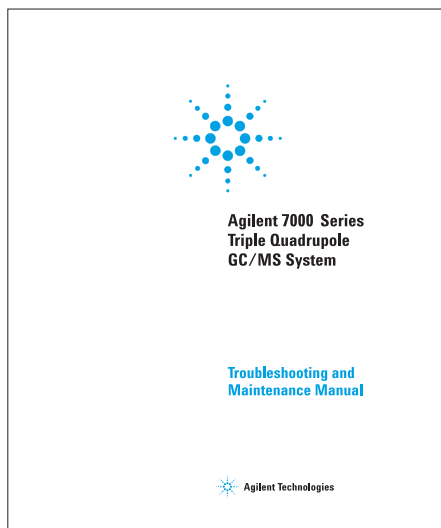
Any topic with the camera icon has a video linked to it. Watch these videos to learn more.



You will find a **paper** copy of this manual included with your instrument, and an electronic copy on the **GC and GC/MS Hardware User Information & Utilities DVD**.



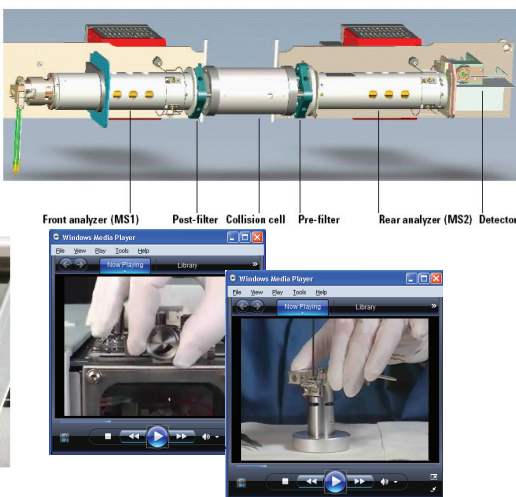
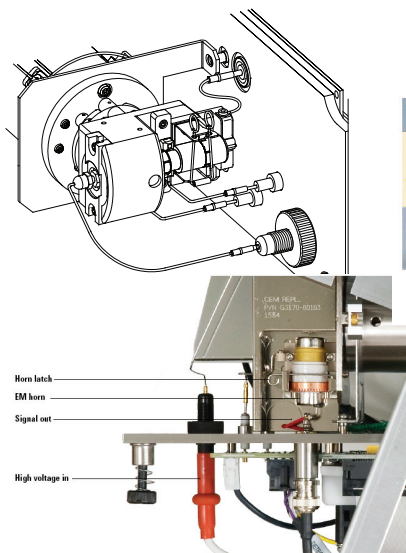
Troubleshooting and Maintenance Manual



The Agilent 7000 Series Triple Quadrupole GC/MS System consists of a 7890A Gas Chromatograph (GC) and a 7000 Series Triple Quadrupole Mass Spectrometer (MS).

The Troubleshooting and Maintenance Manual includes step-by-step instructions along with, videos, IPBs and annotated high-resolutions photos to help you identify the symptoms and causes of problems in your MS, along with details on how to complete common maintenance tasks. Additionally, there are sections on the components of the GC/MS vacuum system, analyzer system, and how to order electronics, and parts.

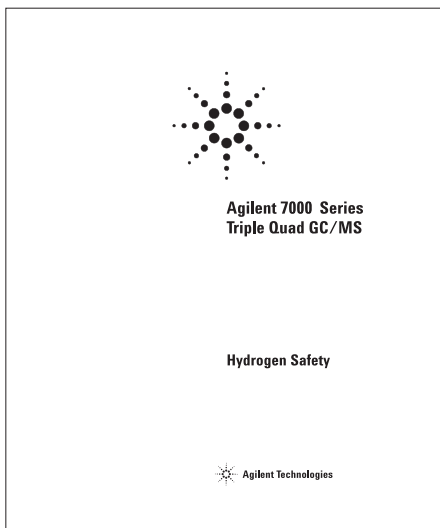
Any topic with the camera icon has a video linked to it. Watch these videos to learn more.



You can find this guide on the **GC and GC/MS Hardware User Information & Utilities DVD**



Hydrogen Safety Manual



Hydrogen presents a number of dangers. Some are general, others are unique to GC or GC/MS operation. Review this document for details on the use of Hydrogen with the GC/MS.

You will find a **paper** copy of this manual included with your instrument, and an electronic copy on the **GC and GC/MS Hardware User Information & Utilities DVD**.



www.agilent.com

© Agilent Technologies, Inc. 2011

Printed in USA 11/11
First Edition, November 2011



G7000-90042



Agilent Technologies