

865EB Mainboard

User' s Manual

Rev: 3.0

Date: 2010.12

CONTENTS

CHAPTER 1 PACKAGE CONTENTS.....	3
CHAPTER 2 INTRODUCTION.....	3
CHAPTER 3 MAINBOARD LOCATIONS.....	5
CHAPTER 4 INSTALLATION.....	6
4.1 JUMPER SETTING AND SLOT	6
4.2 CPU INSTALLATION	7
4.3 MEMORY INSTALLATION.....	10
4.4 AGP CARD INSTALLATION	10
4.5 IDE DEVICES INSTALLATION	11
4.6 OTHER DEVICE INSTALLATION	11
CHAPTER 5 DRIVER INSTALLATION.....	13
5.1 INSTALLATION DIRECTORY	13
5.2 INTEL CHIPSET SOFTWARE SETUP	13
5.3 DIRECTX9.0C SETUP	15
5.4 SOUND DRIVER SETUP.....	17
5.5 VGA DRIVER SETUP	19
CHAPTER 6 BIOS SETUP.....	20
6.1 MAIN MENU.....	21
6.2 STANDARD CMOS FEATURES	22
6.3 ADVANCED BIOS FEATURES	23
6.4 ADVANCED CHIPSET FEATURES	24
6.5 INTEGRATED PERIPHERALS	24
6.6 POWER MANAGEMENT SETUP	25
6.7 PNP/PCI CONFIGURATIONS	26

6. 8 LOAD FAIL-SAFE DEFAULTS26

6. 9 LOAD OPTIMIZED DEFAULTS.....26

6. 10 SET SUPERVISOR & USER PASSWORD.....26

6. 11 SAVE EXIT & WITHOUT SAVING27

Chapter 1 Package Contents

Your mainboard package contains the following items:

- 1 One Intel 865EB mainboard
- 2 One 80-Pin Ultra DMA 66/100 IDE drive ribbon cable
- 3 Drives installed CD
- 4 One user' s manual
- 5 SATA cable (optional)
- 6 SATA Power cable (optional)
- 7 One I/O Backboard

Chapter 2 Introduction

Key Features:

-Chipset:

MCH: Intel 845GV/GL+ICH5

-CPU:

Supports Intel Pentium HT (Hyper Threading Technology) CPU

Supports Intel SOCKET 478 CPU

Supports Intel Pentium 4 SOCKET 478 CPU

Supports Intel Celeron D SOCKET 478 CPU

-Supports 533MHz/800MHz HOST BUS Frequency

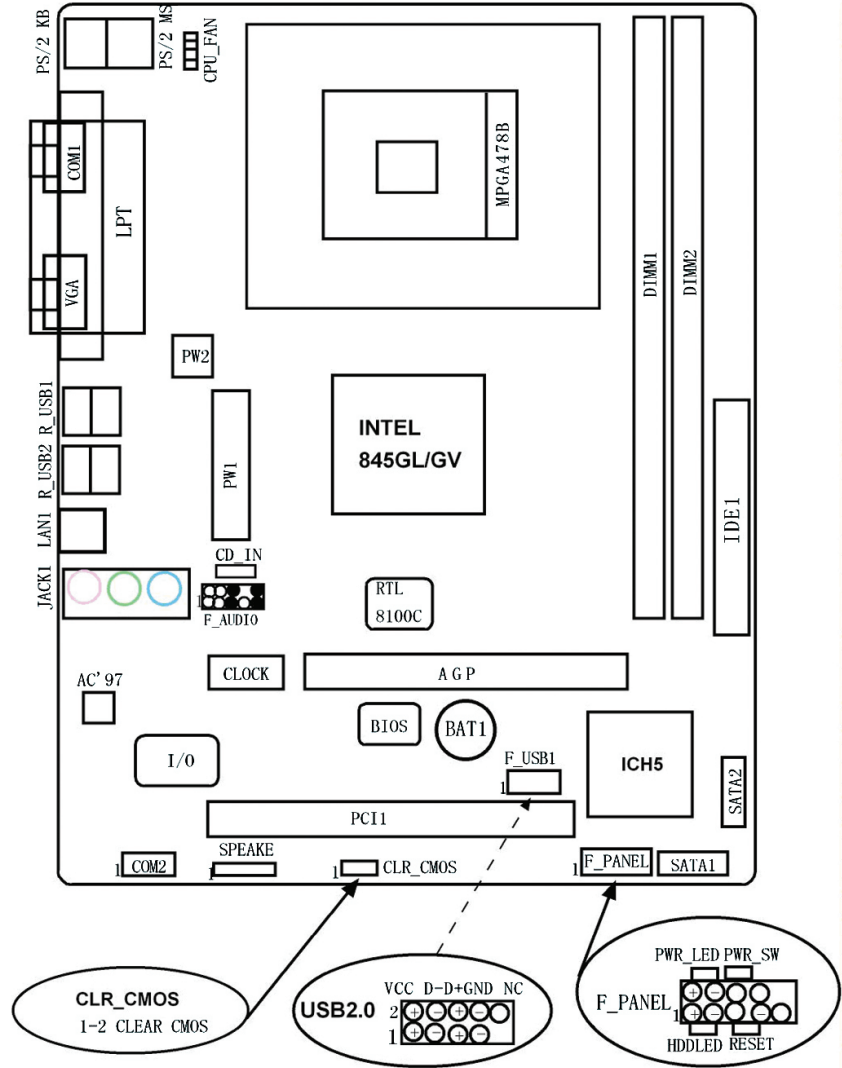
-Memory:

Supports DDR333/400 Memory

Provides Two 184 pin DDR slots

- Supports 4X/8X Fast Write Protocol (1.5V only)
 - Supports AGP 3.0 compliant
- Built Intel Extreme 2 Graphics display
 - Integrated display function technologies without extend VGA card
 - Integrated 2D/3D Graphics Controller
- I/O :
 - One IDE Ports
 - Two serial port
 - One parallel port, supports EPP/ECP/SPP transfers
 - Six USB ports
 - One PS/2 Keyboard port
 - One PS/2 Mouse port
 - One VGA Port
 - Two SATA port
- Onboard AC' 97 2.3 specification compliant
 - Support six channels sound input (example Realtek ALC655)
 - Support 16 bit ADC (Analog Digital Converter)
 - Support multiple stereo input mixer
 - Provides Mic In, Line In, Line Out jack
- Onboard LAN Card
 - Onboard RTL8100C LAN Card
- Expansion slot:
 - One 4X/8X AGP slot(supports 1.5V only)
 - One 32-bit PCI slots 2.3 specification compliant
 - Two DDR support DDR333/DDR400 Memory
- Dimension
 - MicroATX form factor

Chapter 3 Mainboard Locations



Chapter 4 Installation

4.1 Jumper Setting and Slot

CLR_CMOS: Clear CMOS Jumper setting

1-2	Clear CMOS
-----	------------

Audio: Front panel Jumper setting

PIN	Function	PIN	Function
1	MIC+	2	Ground
3	Vbias	4	AuD_Vcc (AVCC)
5	AuD_R_Out	6	R_Out Back
7	N. C.	8	Key
9	AuD_L_Out	10	L_Out Back

USB: Expansion Connector

PIN	Function	PIN	Function
1	VCC: Power	2	VCC: Power
3	D-: Data - Signal	4	D-: Data - Signal
5	D+: Data + Signal	6	D+: Data + Signal
7	GND: Ground	8	GND: Ground
9	Key	10	N. C.

F_PANEL Port

Power Supply LED	Pin2:Power Supply Anode ; Pin4: Ground
HDD LED	Pin1: Power Supply Anode; Pin3: LED Signal
Power Supply Switch	Pin6、 8: Switch Signal
Reset Switch	Pin5、 7、 9: Reset Switch
Speaker Switch	Speaker Switch

Expansion slot

DIMM1/2	184 PIN DDR MEMORY SLOT
PCI1	32 bit PCI BUS expansion slots
AGP1	AGP Display expansion slots

Connectors

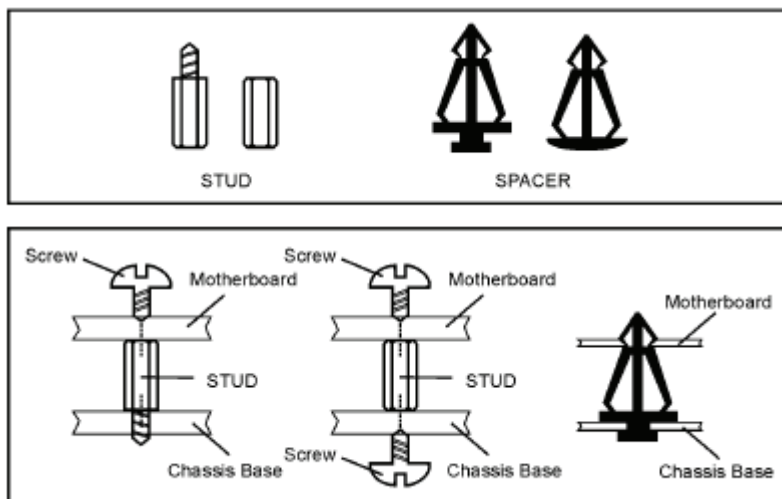
PS/2 (Bottom)	PS/2 Keyboard (Purple)
PS/2 (Top)	PS/2 Mouse Header(Green)
LAN	LAN Connector Port
R_USB1/ R_USB2	USB postposition Connector Port
F_USB1	USB front Connector Port

LPT	Printer Connector Port
COM1/2	Serial Port COM1 Connector Port
JACK1	Audio Output/Audio Input/Microphone
F_AUDIO	Audio front Connector Port
CD_IN	CDROM Audio Input Port
IDE1	IDE Port
SATA1/SATA2	SATA Port
PW1/PW2	ATX Power Supply Connector Port
CPU FAN	CPU FAN Port

4.2 CPU Installation

The system board is equipped with a surface mount socket 478. This socket is exclusively designed for installing a Socket 478 packaged Prescott CPU.

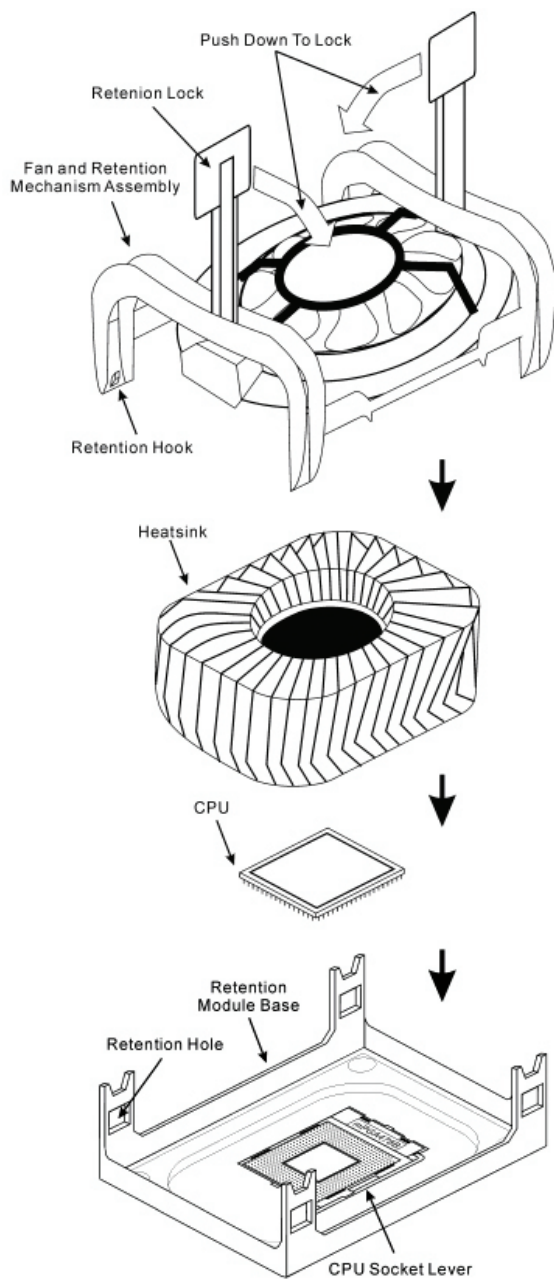
1. Make sure the PC and all other peripheral devices connected to it has been powered down.
2. Disconnect all power cords and cables.



3. Locate the 478 CPU socket on the system board.
4. The CPU socket comes with a cover that is attached with a removable protective cap. The cap is used to protect the CPU socket against dust and harmful particles. Remove the protective

- cap only when you are about to install the CPU.
5. Lift the protective cap from the location pointed below to detach the cap from the cover.
 6. Unlock the socket by pushing the lever down, moving it away from the side tab of the socket, then lifting it up.
 7. Now lift the cover.
 8. Position the CPU above the socket. The gold mark on the CPU must align with pin 1 of the CPU socket.
 9. Insert the CPU into the socket until it is seated in place. The CPU will fit in only one orientation and can easily be inserted without exerting any force.
 10. Once the CPU is in place, move the cover down.
 11. Push the lever down to lock the socket. The lever should hook onto the side tab to indicate that the CPU is completely secured in the socket.
 12. Before you install the fan / heat sink, you must apply a thermal paste onto the top of the CPU. The thermal paste is usually supplied when you purchase the CPU or fan heat sink assembly. Do not spread the paste all over the surface. When you later place the heat sink on top of the CPU, the compound will disperse evenly.

Do not apply the paste if the fan / heat sink already has a patch of thermal paste on its underside. Peel the strip that covers the Paste before you place the fan / heat sink on top of the CPU.
 13. Place the heat sink on top of the CPU. The 4 studs around the heat sink which are used to secure the heat sink onto the system board must match the 4 mounting holes around the socket. Position each stud so that the groove faces the heat sink then push it down firmly until it clicks into place.
 14. Connect the CPU fan's cable connector to the CPU fan connector on the system board.

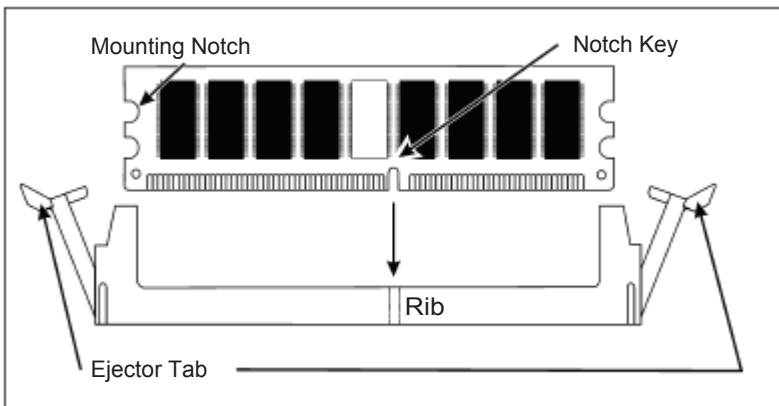


4.3 Memory installation

This mainboard supports DDR333/DDR400 DDR memory, you may install 184 pin DDR memory. DDR SDRAM uses additional power and ground lines and requires 184-pin 2.5V unbuffered DIMM module rather than the 168-pin 3.3V unbuffered DIMM used by SDRAM.

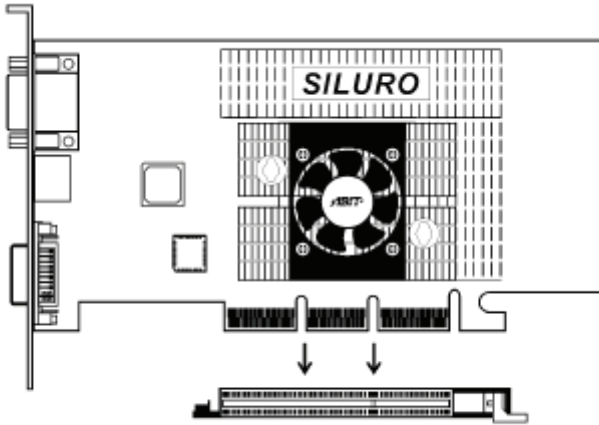
Follow these instructions to install the Memory:

1. Push the latches on each side of the DIMM slot down.
2. Align the memory module with the slot. The DIMM slots are keyed with notches and the DIMM are keyed with cutouts so that they can only be installed correctly.
3. Check that the cutouts on the DIMM module edge connector match the notches in the DIMM slot.
4. Install the DIMM module into the slot and press it firmly down until it seats correctly. The slot latches are levered upwards and latch on to the edges of the DIMM.
5. Install any remaining DIMM modules.



4.4 AGP Card Installation

This mainboard has an Accelerated Graphics Port (AGP) slot that support 8X (+1.5V) cards. When you buy an AGP card, make sure that you ask for one with (+1.5V) specification.



4.5 IDE Devices Installation

IDE devices include hard disk drives, high-density diskette drives, and CD-ROM or DVD-ROM drives, among others.

The motherboard ships with an IDE cable that can support one or two IDE devices. If you connect two devices to a single cable, you must configure one of the drives as Master and one of the drives as Slave. The documentation of the IDE device will tell you how to configure the device as a Master or Slave device.

4.6 Other Device Installation

4.6.1 Serial ATA Installation (7-Pin SATA1/SATA2)

The motherboard bundles the new Serial ATA technology through the SATA interfaces onboard. The SATA specification allows for thinner, more flexible cables with lower pin count, reduced voltage requirement. These connectors support Serial ATA HDDs and allow up to 150MB/s data transfer rate using thin 4-conductor SATA cables. faster than the standard parallel ATA with 133MB/s(Ultra ATA/133)

Notel: The Serial ATA cable is smaller and more flexible allowing easier routing inside the chassis. The lower pin count of the Serial ATA cable eliminates the problem caused by the wide, flat ribbon cables of the

Parallel ATA interface.

Hot plug support for Serial ATA drive and connections are not available in this motherboard.

4.6.2 Sound Connector Port Installation

This mainboard has three audio ports connect audio device.

The left side jack (green) is for a stereo line-out signal. The middle jack (blue) is for a stereo line-in signal. The right side jack (red) is for a microphone.

4.6.3 Clear CMOS (Clear RTC RAM) (CLR_CMOS)

This jumper allows you to clear the Real Time Clock (RTC) RAM in CMOS. You can clear the CMOS memory of date, time, and system setup parameters by erasing the CMOS RTC RAM data. The RAM data in CMOS, that include system setup information such as system passwords, is powered by the onboard button cell battery.

- 1、 Turn OFF the computer and unplug the power cord.
- 2、 place a jumper cap on the two pins to temporarily short the two pins or use a metal object like a screwdriver to touch the two pins for a few seconds.
- 3、 Plug the power cord and turn ON the computer.
- 4、 Hold down the key during the boot process and enter BIOS setup to re-enter data.

Note1: Except when clearing RTC RAM, never remove the cap on CLRRTC1 jumper default position. Removing the cap will cause system boot failure!

Note2: You do not need to clear the RTC when the system hangs due to overclocking. For system failure due to overclocking, use the C.P.R. (CPU Parameter Recall) feature. Shut down and reboot the system so BIOS can automatically reset parameter settings to default values.

4.6.4 ATX Power connectors (20-pin PW1, 4-pin PW2)

These connectors connect to an ATX 12V power supply. The plugs from the power supply are designed to fit these connectors in only one orientation. Find the proper orientation and push down firmly until the connectors

completely fit. In addition to the 20-pin PWR1 connector, connect the 4-pin PW2 +12V power plug to provide sufficient power to the CPU.

Note1: Make sure that you ATX 12V power supply can provide at least 15A on the +12V lead and at least 2A on the +5-volt standby lead (+5VSB). The minimum recommended wattage is 300W or above for a fully configured system. The system may become unstable and may experience difficulty powering up if the power supply is inadequate.

Note2: Do not forget to connect the 20-pin PWR1 and 4-pin PW2 power plugs. Failure to do so may cause severe damage to the CPU or motherboard!

Chapter 5 Driver Installation

5.1 Installation Directory

The utility CD is supplied with that mainboard the connects contained in it are showed as below:

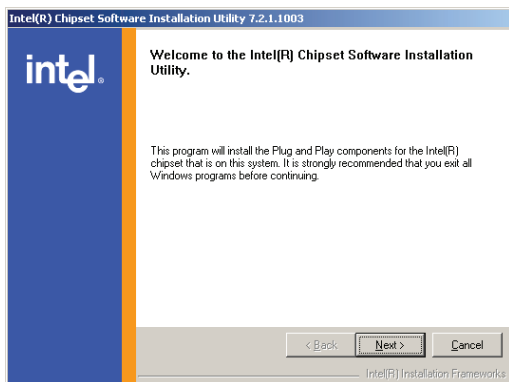
Directory	Driver	OS
INTEL\INF\8XX	Intel chipset software	Windows 9x Windows 2000/XP Windows NT4.0
TOOLS\DirectX 9.0C	DirectX 9.0C setup	Windows 9x Windows 2000 Windows XP
SOUND\REALTEK\ Realtek ALC101_655	Realtek AC' 97 Audio driver	Windows 9x Windows 2000/XP Windows NT4.0
INTEL\VGA\845	VGA driver setup	Windows 9x Windows 2000/XP Windows NT4.0

Before installing audio driver, you must identify the mode of AC' 97 codec.

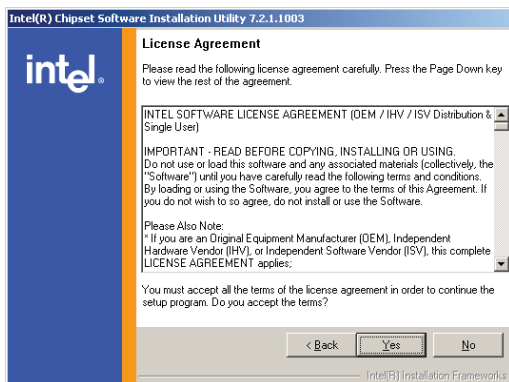
For example: If you use Realtek serial codec, you need to enter into the Realtek directory installing.

5.2 Intel Chipset Software Setup

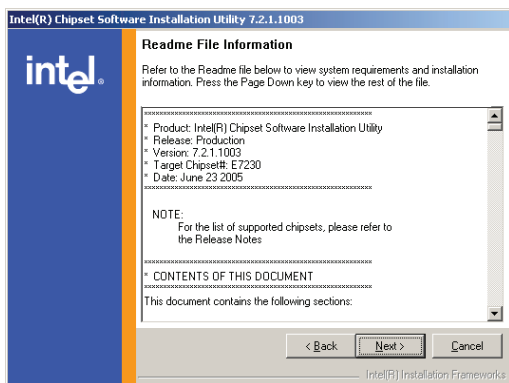
Insert the driver CD, running driver software CD, choose the directory :\
CD-ROM: INTEL\INF\8XX



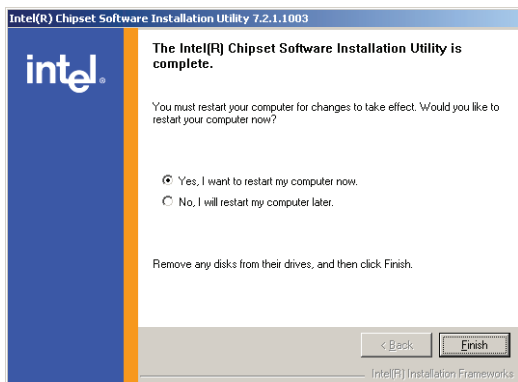
Click “NEXT” to continue



Select “YES” to continue



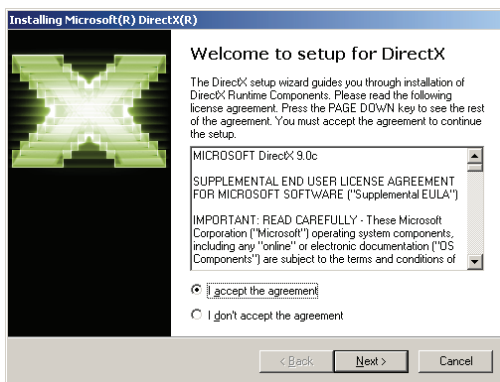
Select “NEXT” to continue



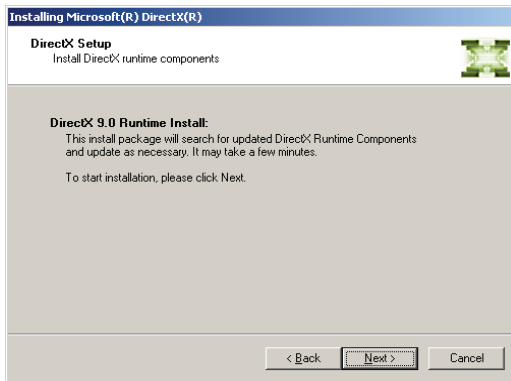
Select “FINISH” to complete the installation.

5.3 DirectX9.0C Setup

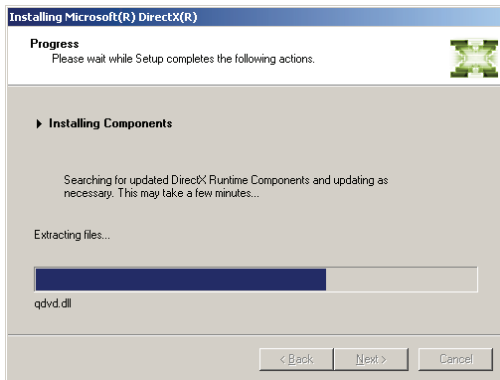
CD-ROM: \TOOLS\DirectX 9.0C\



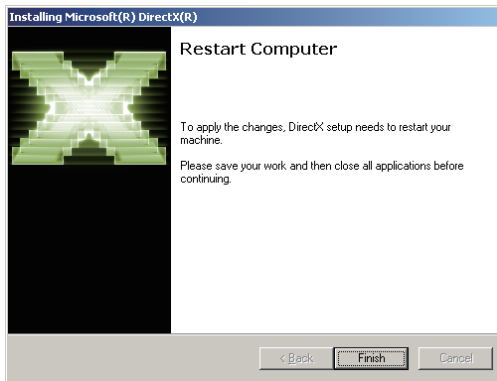
Select “I agree” to continue



Select “NEXT” to continue



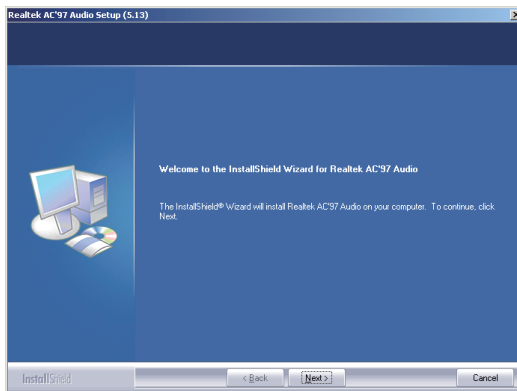
continue



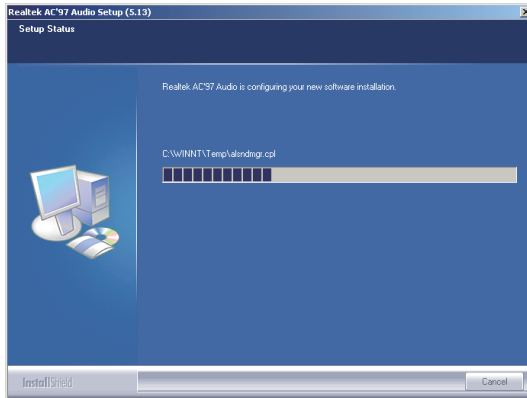
Select “FINISH” to complete the installation.

5.4 Sound Driver Setup

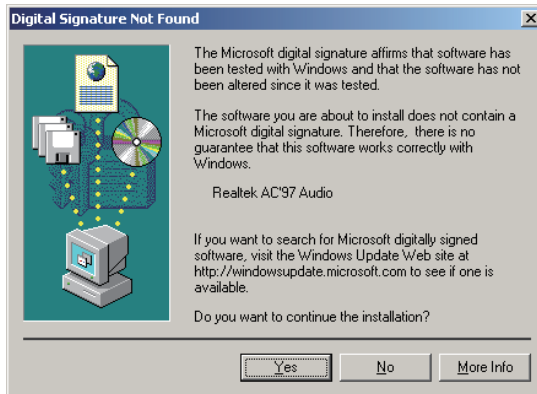
Insert the driver CD, running driver software CD, choose the directory: \CD-ROM:\SOUND\REALTEK\ Realtek ALC101_655\



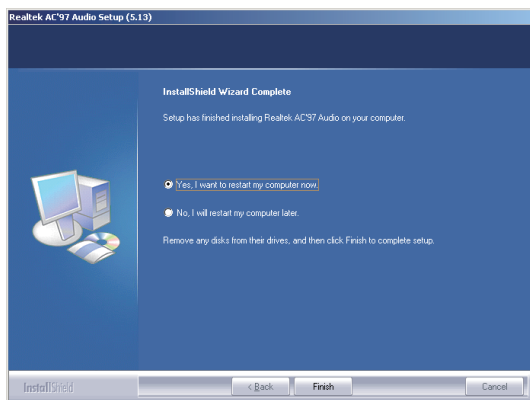
Select “Next” to continue



Continue



Select "YES" to continue



Select “Finish” to complete the installation

6-Channel Sound Output Support

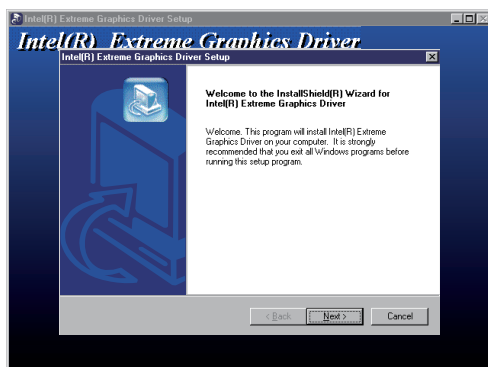
Please follow the steps below for operation (optional):

1. After install sound driver, click “Sound effect”, “AC97 Audio configuration” options;
2. Click “Sound configuration”, select “6 Channel mode for 5.1 speakers output” options.
3. Click “Sound effect” menu “Environment”, you must choose one Sound effect realization 6-Channel sound output.

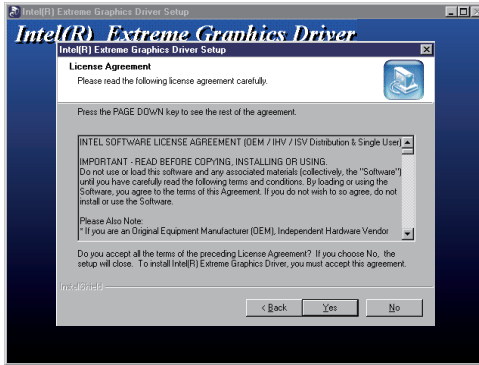
5.5 VGA Driver Setup

Insert the driver CD, running driver software CD, choose the directory:

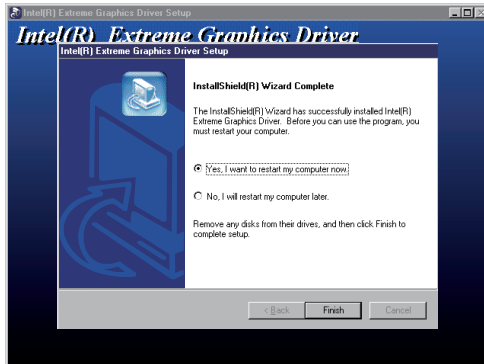
\CD-ROM:\INTEL\VGA\845\



Select “Next” to continue



Select “Next” to continue



Select “Finish” to continue

Chapter 6 BIOS Setup

The BIOS Setup Utility record settings and information of your computer, such as date and time, the type of hardware installed, and various configuration settings. Your computer applies those information to initialize all the components when booting up and basic function of coordination between system components.

If the Setup Utility configuration is incorrect, it may cause the system to malfunction. It can even stop you computer booting properly. If it happens, you can use the clear CMOS jumper to clear the CMOS memory which has stored the configuration information; or you can hold down the Page

Up key while rebooting your computer. Holding down the Page Up key also clears the setup information,

6.1 Main menu

Phoenix - AwardBIOS CMOS Setup Utility	
▶ Standard CMOS Features	Load Fail-Safe Defaults
▶ Advanced BIOS Features	Load Optimized Defaults
▶ Advanced Chipset Features	Set Supervisor Password
▶ Integrated Peripherals	Set User Password
▶ Power Management Setup	Save & Exit Setup
▶ PNP/PCI Configurations	Exit Without Saving
Esc:Quit ↑ ↓ → ← :Select Item	
F10:Save & Exit Setup	
Time,Date,Hard Disk Type...	

You can use cursor arrow keys to highlight anyone of options on the main menu page. Press **Enter** to select the highlighted option. Press the **Escape** key to leave the setup utility. Press the **F9** key to go back to menu in BIOS. Some options on the main menu page lead to tables of items with installed value that you can use cursor arrow keys to highlight on item, and press **Page Up** and **Page Down** keys to cycle through alternative values of that item. The other options on the main menu page lead to dialog boxes that require your answer Yes or No by hitting the Y or N keys. If you have already changed the setup utility, press F10 to save those changes and exit the utility.

- ✧ Standard CMOS Features
 - Setup date, time, floppy type
- ✧ Advanced BIOS Features
 - Setup BIOS provides function, for example virus, boot-strap induc
- ✧ Advanced Chipset Features

✧ Base Memory	Default: 640K
✧ Extended Memory	Default: XXXXXXXK
✧ Total Memory	Default: XXXXXXXK

6.3 Advanced BIOS Features

✧ CPU Feature	Default: Press Enter
Delay Prior to Thermal	Default: 16Min
Thermal Management	Default: Thermal Monitor 1
Hard Disk Boot Priority	Default: Press Enter
✧ CPU L1&L2 Cache	Default: Enabled
Leave these items enabled since all the processors that can be installed on this board have internal L2 cache memory.	
✧ Quick Power On Self Test	Default: Enabled
✧ First Boot Device	
When system boot-strap first time detect device.	
✧ Second/Third Boot Device	
When system boot-strap first time detect device.	
✧ Boot Other Device	Default: Enabled
If you enable this item, the system will also search for other boot devices if it fails to find an operating system from the first two locations.	
✧ Boot Up NumLock Status	Default: On
✧ Gate A20 Option	Default: Fast
✧ Security Option	Default: Setup
✧ APIC Mode	Default: Enabled
✧ MPS Version Control For OS	Default: 1.4
✧ OS Select For DRAM > 64MB	Default: Non-OS2
✧ Report No FDD For WIN 95	Default: NO
✧ Video BIOS Shadow	Default: Enabled
✧ Full Screen LOGO Show	Default: Enabled
✧ Small Logo (EPA) Show	Default: Enabled

6.4 Advanced Chipset Features

✧	DRAM Timing Selectable	Default: By SPD
	X CAS Latency Time	Default: 2
	X Active to Precharge Delay	Default:6
	X DRAM RAS# to CAS# Delay	Default: 3
	X DRAM RAS# Precharge	Default: 3
✧	Turbo Mode	Default:Disabled
✧	Memory Frequency For	Default:Auto
✧	System BIOS Cacheable	Default: Enabled
✧	Video BIOS Cacheable	Default:Disabled
✧	Memory Hole At 15M-16M	Default: Disabled
✧	AGP Aperture Size (MB)	Default:64
	On-Chip VGA Setting	
✧	On-Chip VGA	Default:Enabled
✧	On-Chip Frame Buffer Size	Default: 8MB
✧	DVMT Mode	Default: DVMT
✧	Init Display First	Default:PCI Slot

6.5 Integrated Peripherals

✧	OnChip IDE Device	Default: Press Enter
✧	IDE HDD Block Mode	Default: Enabled
✧	IDE DMA transfer access	Default: Enabled
✧	On-Chip Primary PCI IDE	Default: Enabled
✧	IDE Primary/ Master/Slave PIO/UDMA	Default: Auto
✧	On-Chip Secondary PCI IDE	Default: Enabled
✧	IDE Secondary Master/Slave PIO/UDMA	Default: Auto
	*** On-Chip Serial ATA Setting ***	
✧	On-chip serial ATA	Default: Auto
✧	X Serial ATA Port0 Mode	Default: SATA0 master
✧	Serial ATA port1 Mode	Default:SATA1 master
✧	Onboard Device	Default: Press Enter
✧	USB Controller	Default:Enabled

✧ USB 2.0 Controller	Default:Enabled
✧ USB Keyboard Support	Default: Enabled
✧ USB Mouse Support	Default: Disabled
✧ AC97 Audio	Default: Auto
✧ Onboard LAN Control	Default:Enabled
✧ Onboard LAN Boot Rom	Default:Disabled
✧ BIOS ROM Write Protect	Default:Disabled
✧ SuperIO Device	Default: Press Enter
✧ Onboard Serial Port 1	Default: 3F8/IRQ4
✧ Onboard Serial Port 2	Default: 2F8/IRQ3
✧ UART Mode Select	Default:Normal
✧ X RxD,TxD Active	Default:Hi,Lo
✧ X IR Transmission Delay	Default:Enabled
✧ X UR2 Duplex Mode	Default:Half
✧ X Use IR Pins	Default:IR-Rx2Tx2
✧ Onboard Parallel Port	Default:378/IRQ7
✧ Parallel Port Mode	Default:SPP
✧ X EPP Mode Select	Default:EPP1.7
✧ X ECP Mode Use DMA	Default:3
✧ PWRON After PWR-Fail	Default: Off

6.6 Power Management Setup

✧ ACPI Function(Setup if use ACPI function)	Default: Enabled
✧ Power Management	Default : User Define
✧ Video off Method	Default: DPMS
✧ Video off In Suspend	Default: Yes
✧ Suspend Type	Default: Stop Grant
✧ MODEM Use IRQ	Default: 3
✧ Suspend Mode	Default: Disabled
✧ HDD Power Down	Default: Disabled
✧ Soft-Off by PWR-BTTN	Default: Instant-Off

- ✧ Wake-Up by PCI Card Default: Disabled
- ✧ Resume by Alarm Default: Disabled
- X Date (of Month) Alarm Default: 0
- X Time (hh:mm:ss) Alarm Default: 0:0:0
- ** Reload Global Timer Events **
- ✧ Primary/ Secondary IDE 0/1 Default: Disabled
- ✧ FDD, COM, LPT Port Default: Disabled
- ✧ PCI PIRQ [A-D]# Default: Disabled

6.7 PNP/PCI Configurations

- ✧ Reset Configuration Data Default: Disabled
- ✧ Resources Controlled By Default: Auto (ESCD)
 - X IRQ Resources Default: Press Enter
 - X DMA Resources Default: Press Enter
- ✧ PCI/VGA Palette Snoop Default: Disabled

6.8 Load Fail-Safe Defaults

If you select this item and press enter a dialog box appears. If you press Y, and then Enter, the setup utility loads a set of fail-safe default values. These default values are not very demanding and they should allow your system to function with most kinds of hardware and memory chips.

Note: It is highly recommended that uses enter this option to load optimal values for accessing the best performance.

6.9 Load Optimized Defaults

If you select this item and press enter a dialog box appears.

If you press Y, and then Enter, the setup utility loads a set of best-performance default values. These default values are quite demanding and your system might not function properly if you are using slower memory chips or other low-performance components.

6.10 Set Supervisor & User Password

If you highlight this item and press Enter, a dialog box appears that you can enter a supervisor password. You can enter no more than six

letters or numbers. Press Enter after you have typed in the password. There will be the second dialog box asking you to retype the password for confirmation. Press Enter after you have retyped it correctly. Then the password is required for the access to the setup utility or for it at start-up, depending on the setting of the password check item in advanced setup.

6.11 Save Exit & Without Saving

Highlight this item and press Enter to save the changes that you have made in the setup utility configuration and exit the program. When the save and exit dialog box appears, press Y to save and exit, or press N to exit without saving.