



# Media Hub

Home Entertainment Storage

NMH Series

User Guide

# About This Guide

## Icon Descriptions

While reading through the User Guide you may see various icons that call attention to specific items. Below is a description of these icons:



**NOTE:** This check mark indicates that there is a note of interest and is something that you should pay special attention to while using the product.



**WARNING:** This exclamation point indicates that there is a caution or warning and it is something that could damage your property or product.



**WEB:** This globe icon indicates a noteworthy website address or e-mail address.

## Online Resources

Website addresses in this document are listed without **http://** in front of the address because most current web browsers do not require it. If you use an older web browser, you may have to add **http://** in front of the web address.

Resource	Website
Linksys	<a href="http://www.linksysbycisco.com">www.linksysbycisco.com</a>
Linksys International	<a href="http://www.linksysbycisco.com/international">www.linksysbycisco.com/international</a>
Glossary	<a href="http://www.linksysbycisco.com/glossary">www.linksysbycisco.com/glossary</a>
Network Security	<a href="http://www.linksysbycisco.com/security">www.linksysbycisco.com/security</a>

## Copyright and Trademarks



Linksys, Cisco and the Cisco Logo are registered trademarks or trademarks of Cisco Systems, Inc. and/or its affiliates in the U.S. and certain other countries. Copyright © 2008 Cisco Systems, Inc. All rights reserved. Other brands and product names are trademarks or registered trademarks of their respective holders.

<b>Chapter 1: Product Overview</b>	<b>1</b>
Front Panel of the Media Hub with LCD (NMH400 Series) . . . . .	1
Front Panel of the Media Hub (NMH300 Series) . . . . .	2
Back Panel . . . . .	2
Top Panel. . . . .	3
Install a Second Hard Disk . . . . .	3
Replace a Hard Disk . . . . .	3
<b>Chapter 2: Getting Started</b>	<b>5</b>
Overview. . . . .	5
Media Importer. . . . .	5
NTI Shadow . . . . .	6
Drag-and-Drop . . . . .	7
<b>Chapter 3: Ways to Use the Media Hub</b>	<b>11</b>
Overview. . . . .	11
Centralized Storage . . . . .	11
Digital Media Sharing. . . . .	12
On-Demand Backups . . . . .	13
Automatic Backup of Computers. . . . .	14
<b>Chapter 4: Use of the Media Browser</b>	<b>15</b>
How to Access the Media Hub . . . . .	15
How to Use the Media Browser. . . . .	15
Music . . . . .	17
Photos . . . . .	20
Videos. . . . .	22
File Browser . . . . .	23
<b>Chapter 5: Use of the LCD Menu</b>	<b>25</b>
How to Navigate the LCD Menu . . . . .	25
How to Access the LCD Menu. . . . .	25
Backup . . . . .	25
Status . . . . .	26
Settings. . . . .	27
Power Off . . . . .	28
Alerts . . . . .	28
<b>Chapter 6: File Backup</b>	<b>29</b>
Overview. . . . .	29
NTI Shadow . . . . .	29
Backup Jobs . . . . .	31

<b>Chapter 7: Advanced Configuration</b>	<b>33</b>
How to Access the Web-Based Utility . . . . .	.33
Overview . . . . .	.34
System . . . . .	.34
Disk . . . . .	.36
Backup . . . . .	.38
Services . . . . .	.39
<b>Appendix A: Troubleshooting</b>	<b>41</b>
<b>Appendix B: Specifications</b>	<b>45</b>
Model NMH305 - Media Hub . . . . .	.45
Model NMH405 - Media Hub with LCD . . . . .	.45
Model NMH410 - Media Hub with LCD . . . . .	.45
<b>Appendix C: Warranty Information</b>	<b>46</b>
Limited Warranty . . . . .	.46
<b>Appendix D: Regulatory Information</b>	<b>48</b>
FCC Statement . . . . .	.48
Safety Notices . . . . .	.48
Industry Canada Statement . . . . .	.48
User Information for Consumer Products Covered by EU Directive 2002/96/EC on Waste Electric and Electronic Equipment (WEEE) . . . . .	.49
<b>Appendix E: Software License Agreement</b>	<b>53</b>
Software in Linksys Products . . . . .	.53
Software Licenses . . . . .	.53

## Chapter 1: Product Overview

Thank you for choosing the Linksys by Cisco Media Hub. One Serial-ATA (SATA) hard disk is pre-installed, and a second SATA hard drive bay is available if you want to add more storage space. Use the USB ports to add USB hard drives or connect USB flash drives to access your portable files. (USB hard drives may require external power supplies.) The Media Hub with LCD (NMH400 Series) offers additional features, a LCD screen with navigation pad and memory card slots.

The front panel features vary for the NMH400 and NMH300 Series. The back panel and top panel features are the same for both series.

### Front Panel of the Media Hub with LCD (NMH400 Series)



**LCD Screen** When the Media Hub is powered on, the menu is displayed. Use it to initiate backup jobs, display status information, configure LCD screen settings, or power off the Media Hub. Refer to **Chapter 5: Use of the LCD Menu, page 25** for more information.



**Navigation Pad** Use the navigation pad to navigate the LCD menus. Press the up or down arrow to move up or down the menu choices. Press the right arrow to move to a lower menu level. Press the left arrow to move to a higher menu level.

To select a menu choice, press the **OK** button. Refer to the end of this chapter for more information.



**Power Button and LED** (Blue/Red) To power on the Media Hub, press the Power button. To shut down the Media Hub, press and hold the button until the Power LED starts flashing (this may take more than three seconds). A complete shutdown may take 10-15 seconds.

The Power LED flashes blue when the Media Hub boots up, installs a disk, or shuts down. It is solidly lit blue when the Media Hub is ready for use. The LED flashes either blue or red when there is an error. (Refer to **Appendix A: Troubleshooting, page 41.**)



**NOTE:** If the Media Hub must be shut down for a long period of time, Linksys recommends that you disconnect the power adapter from the Media Hub.



**Secure Digital (SD) Memory Card Slot** Insert the SD, MultiMediaCard (MMC), extreme Digital (xD), or Memory Stick (MS) card to access its files.



**CompactFlash (CF) Memory Card Slot** Insert the CF memory card to access its files.



**USB** The USB port connects to a USB storage device.

## Front Panel of the Media Hub (NMH300 Series)



**1** **DISK 1** (Blue/Red) The DISK 1 LED serves two purposes. The LED is solidly lit blue when Disk 1 is ready for use. The LED is not lit when no disk is detected.

**2** **DISK 2** (Blue/Red) The DISK 2 LED serves two purposes. The LED is solidly lit blue when Disk 2 is ready for use. The LED is not lit when no disk is detected.

**Back Up Button** To initiate backup jobs specified by the backup software on your computer(s), press the **back up** button.



**NOTE:** Your computer(s) must be powered on for the jobs to run.



**NOTE:** The backup software must be installed on every computer you want to back up.



**Power Button and LED** (Blue/Red) To power on the Media Hub, press the Power button. To shut down the Media Hub, press and hold the button until the Power LED starts flashing (this may take more than three seconds). A complete shutdown may take 10-15 seconds.

The Power LED flashes blue when the Media Hub boots up, installs a disk, or shuts down. It is solidly lit blue when the Media Hub is ready for use. The LED flashes either blue or red when there is an error. (Refer to **Appendix A: Troubleshooting**, page 41.)



**NOTE:** If the Media Hub must be shut down for a long period of time, Linksys recommends that you disconnect the power adapter from the Media Hub.



**USB** The USB port connects to a USB storage device.

## Back Panel


Both models of the Media Hub share the same back panel.





**Air Vent** The air vent allows air to circulate and cool the Media Hub.




**WARNING:** Do not block the air vent on the back of the Media Hub; otherwise, overheating can occur.


 **Security Slot** The security slot is where you can attach a lock to protect the Media Hub from theft.

 **USB** The USB port connects to a USB storage device.

 **Ethernet** The 10/100/1000 Gigabit Ethernet port connects to an Ethernet network device, such as a router or switch. The LED on the left lights up green when there is a 100 Mbps connection. It lights up orange when there is a 1000 Mbps connection. It does not light up when there is a 10 Mbps connection.

The amber LED on the right flashes when there is network activity.

 **Reset** To restore the factory default settings, press and hold the **Reset** button for three seconds. (User data on the hard disk(s) will not be affected.)

 **Power** The Power port connects to the included power adapter.




**NOTE:** If the Media Hub must be shut down for a long period of time, Linksys recommends that you disconnect the power adapter from the Media Hub.

## Top Panel

Both models of the Media Hub share the same top panel.

The drive bay cover protects the drive bays. Disk 1, a SATA hard disk, is pre-installed.



 **Button** Push the button to open the drive bay cover.

## Install a Second Hard Disk



**NOTE:** If you plan to install a second disk and mirror (RAID 1) these disks, then match disk sizes for maximum disk use. For more information about disk configuration options, refer to **Available Disk Configuration Actions, page 37**.

To install a second SATA hard disk, follow these instructions:



**WARNING:** Before you install the second hard disk, back up its existing data because all data on the second hard disk will be erased.

1. To shut down the Media Hub, press and hold the Power button until the Power LED starts flashing.
2. Disconnect the power adapter from the Power port.
3. Disconnect the Ethernet network cable from the Ethernet port.
4. To release the drive bay cover, push the button on the top panel.
5. To remove the empty drive bay, push together its clips and pull out the drive bay.
6. Make sure the screw holes of the hard disk line up with the screw holes of the drive bay. Then insert the hard disk into the drive bay.
7. Use the four included screws to secure the hard disk in its bay.
8. With the hard disk's label facing the right side of the Media Hub, slide the disk into the empty slot.
9. Push down on the hard disk to make sure the connectors are securely seated.
10. Lower the cover, and push it down to secure it.
11. Connect the Ethernet network cable to the Ethernet port.
12. Connect the power adapter to the Power port.

## Replace a Hard Disk



**WARNING:** The replacement hard disk must be blank with no partitions; otherwise, the Media Hub cannot use it. (If you want to install a hard disk that was previously used in a Windows computer, refer to **Before You Begin, page 44**.)



To replace a hard disk, follow these instructions:

1. To shut down the Media Hub, press and hold the Power button until the Power LED starts flashing.  
If this step does not shut down the Media Hub, then proceed to step 2.
2. Disconnect the power adapter from the Power port.
3. Disconnect the Ethernet network cable from the Ethernet port.
4. To release the drive bay cover, push the button on the top panel.
5. To remove the hard disk you want to replace, push together the clips of its drive bay, and then pull out the drive bay.
6. Remove the hard disk from its drive bay.
7. To install the replacement hard disk, make sure the screw holes of the hard disk line up with the screw holes of the drive bay. Then insert the hard disk into the drive bay.
8. Use the four included screws to secure the hard disk in its bay.
9. With the hard disk's label facing the right side of the Media Hub, slide the drive bay back into its slot.



Media Hub

10. Push down on the hard disk to make sure the connectors are securely seated.



11. Lower the cover, and push it down to secure it.
12. Connect the Ethernet network cable to the Ethernet port.
13. Connect the power adapter to the Power port.



## Chapter 2: Getting Started

### Overview

The Media Hub is designed to store your media content in one location for convenient access. (There are additional ways to use the Media Hub; refer to **Chapter 3: Ways to Use the Media Hub, page 8.**)

The Media Hub offers three ways to help you copy files to the Media Hub. This chapter describes how to use the Media Importer, NTI Shadow, and the Drag-and-Drop feature. (FTP is another option for copying files.)

You can copy media files from a computer or other network device. You can also copy media files from a USB storage device or memory card directly connected to the Media Hub.



**NOTE:** Only the Media Hub with LCD (NMH400 Series) supports direct connection of memory cards.

### Media Importer

The Media Importer is the import tool that was automatically installed by the Setup Wizard. Use it to automatically find, copy, and update media files to the Media Hub. In the future, any changes made or new files added will be automatically updated on the Media Hub.

Files using the following file formats and extensions are imported:

- **Music** .mp3, .wma, .wav, .m4a, .aac, .lpcm, .ogg, .flac, .ac3, .mpa, .aif
- **Photos** .jpg, .png, .tif, .bmp, .gif
- **Videos** .mpg, .mpeg, .mp2, .mp4, .avi, .wmv, .vob, .divx, .3gp, .vdr, .asf, .mpe, .dvr, .xvid, .m1v, .m4v

If the Media Importer is not installed on your computer, run the Setup Wizard on the enclosed CD-ROM and click **Connect Computers**.

### Access

Double-click the system tray icon to access the Media Importer.



Importer System Tray Icon (Active)

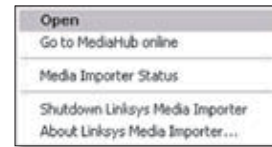


Importer System Tray Icon (Closed)

If you do not see the icon, go to **Start > All Programs > Cisco Media Hub > Linksys Media Importer > Linksys Media Importer**.

### System Tray Icon Menu

Right-click the system tray icon to view the following options:



Importer Icon Menu

**Open** Click this option to open the Media Importer.

**Go to Media Hub Online** Click this option to open the Media Browser.

**Media Importer Status** Click this option to view the status of the file transfers to the Media Hub.

**Shutdown Linksys Media Importer** Click this option to exit the Media Importer.

**About Linksys Media Importer** Click this option to view the version number of the Media Importer.

### Main Menu

The main menu appears with the following options:



Media Importer Main Menu

**Disconnect/Connect** Click this option to connect or disconnect the Media Hub from the Media Importer.

**Switch Media Hub** Click this option to switch to a different Media Hub.

**Manage Media Importer** Click this option to select the folders you want to copy to the Media Hub.



Manage Media Importer

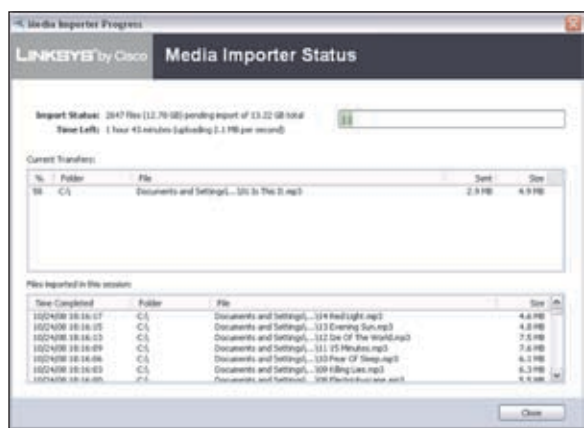
**Choose the folders that will be regularly searched for media** Select the appropriate folders.

**Only these types** Select the file types that will be copied.

The percentages and size of files by type (Photos/Images, Music, and Video) are displayed.

To exit the *Manage Media Importer* screen, click **Finish**.

**Media Importer Status** Click this option to view the status of the file transfers to the Media Hub.



Media Importer Status

**Import Status** The number and size of files being imported are displayed.

**Time Left** The amount of time left for the import and its speed are displayed.

**Current Transfers** For each file, the % (percentage), Folder, File name, Sent (size of imported data), and Size (total size of file) are displayed.

**Files imported in this session** For each file, the Time Completed, Folder, File name, and Size are displayed.

To exit the *Media Importer Status* screen, click **Close**.

To exit the Media Importer, click the **X** button in the upper right corner.

## NTI Shadow

NTI Shadow is the backup tool you installed during the Setup Wizard. Use it to automatically copy your documents to the Media Hub for safekeeping.

If you did not choose to install the backup tool, then NTI Shadow will not be available. To install NTI Shadow, run the Setup Wizard on the enclosed CD-ROM and click **Connect Computers**.

## Access

Double-click the system tray icon to access NTI Shadow.



NTI Shadow System Tray

If you do not see the icon, go to **Start > All Programs > Cisco Media Hub > NTI Shadow**.

## System Tray Icon Menu

Right-click the system tray icon to view the following options:



NTI Shadow Icon Menu

**Shadow Setting** Click this option to open NTI Shadow.

**About NTI Shadow** Click this option to view the version number of NTI Shadow.

**Exit** Click this option to exit NTI Shadow.

## Main Menu

The main menu appears.



NTI Shadow Main Menu

## Create Backup Job

**Create Backup Job** Click this option to create a backup job. For more information, refer to **Create Backup Job, page 31**.

## Modify Backup Job

Backup jobs are listed in this section.

The Setup Wizard creates a default backup job that backs up specific files in the My Documents folder; these files use the following file formats and extensions: .doc, .xls, .pdf, .ppt, .adb, .rtf, .xml, .htm, .html, .txt, and .pst. The backup files are saved to the \backup\<Computer\_Name>\Documents folder on the Media Hub and are organized by date.

Select the appropriate backup job, and then click one of the following options:

**Start Backup** Click this option to start a backup job.

**Edit** Click this option to change a backup job.

**Disable** Click this option to disable a backup job.

**Disable All** Click this option to disable all backup jobs.

**Delete** Click this option to delete a backup job.

To exit NTI Shadow, click **Done**.



**NOTE:** For more information about NTI Shadow, click **Help**.

## Drag-and-Drop

Use Windows Explorer and the Drag-and-Drop feature to manually copy files to the Media Hub. Drop or paste music to the music folder, photos to the photos folder, and videos to the videos folder.

## Windows Access

1. To open Windows Explorer, go to **Start > Programs > Accessories > Windows Explorer**. (You can also right-click **Start** and click **Explore**.)
2. During the Setup Wizard, you created a Friendly Name or device name for the Media Hub.

In the *Address* field of Windows Explorer, enter the Friendly Name of the Media Hub:

\\<Friendly\_Name>

(Examples: \\HomeMedia or \\Media1)



Friendly Name

3. Press **Enter**.

You can also use the drive letter or IP address to access the Media Hub.



**NOTE:** The drive letter is mapped directly to the media folder, which holds the music, photos, and videos sub-folders. Use the Friendly Name or IP address of the Media Hub to access all folders: backup, ftp, and media.

## Drive Letter

During the Setup Wizard, the Media Hub was assigned a drive letter to identify it on your computer.

### Windows Vista

Right-click **Start**. Click **Computer**, and then click the drive letter to access the media folder of the Media Hub.

### Windows XP

Double-click **My Computer**, and then click the drive letter to access the media folder of the Media Hub.

### Drive Letter Not Found

If you do not see a drive letter for the Media Hub, run the Setup Wizard on the enclosed CD and click **Connect Computers**. You can also follow these instructions:

1. To open Windows Explorer, go to **Start > Programs > Accessories > Windows Explorer**. (You can also right-click **Start** and click **Explore**.)
2. Right-click **My Computer** (Windows XP) or **Computer** (Windows Vista).
3. Select **Map Network Drive**.
4. In the *Folder* field, enter \\<Friendly\_Name>\media.
5. Click **Finish**.

For additional information, refer to Windows Help.



**NOTE:** If you do not see the Media Hub, then change the Workgroup of the Media Hub to match the Workgroup of your computer (refer to **System, page 32**).

## IP Address (For Advanced Users)

1. In the *Address* field of Windows Explorer, enter the IP address of the Media Hub:

\\<IP\_address\_of\_Media\_Hub>



IP Address of Media Hub

2. Then press **Enter**.



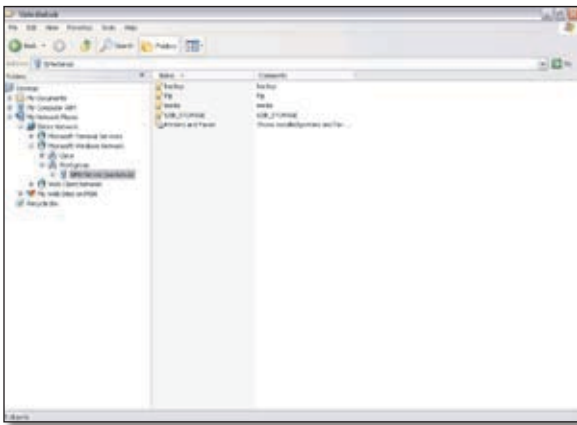
**NOTE:** For the Media Hub with LCD (NMH400 Series), look up its IP address through the LCD menu. Refer to **Status, page 22**. For the Media Hub (NMH300 Series), look up its IP address through the router's web-based utility. Refer to the router's documentation for more information.

## File Directory

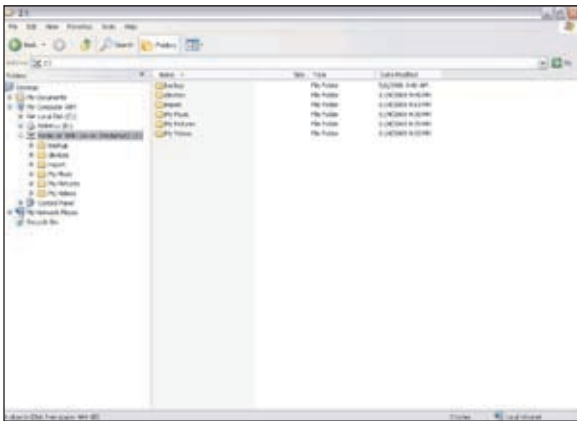
Open the folders of the Media Hub. Use Windows Explorer to add, copy, move, or delete files.



**NOTE:** File transfer speeds will vary, depending on network conditions, including use of wireless, and the number and size of your files.



Media Hub Accessed Through Friendly Name



Media Folder of Media Hub Accessed Through Drive Letter

## Mapped Drive

You can map any folder of the Media Hub as a separate drive.

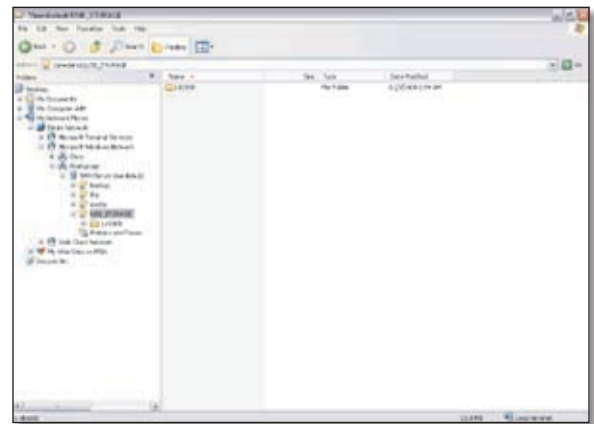
1. To open Windows Explorer, go to **Start > Programs > Accessories > Windows Explorer**. (You can also right-click **Start** and click **Explore**.)

2. Right-click **Computer** (Windows Vista) or **My Computer** (Windows XP).
3. Select **Map Network Drive**.
4. From the **Drive** drop-down menu, select an available drive letter.
5. In the **Folder** field, enter the following: **\\<Friendly\_Name\_of\_Media\_Hub>\<folder\_name>**. (Example: \\Media1\backup.)
6. Click **Finish**.

## Device Folder

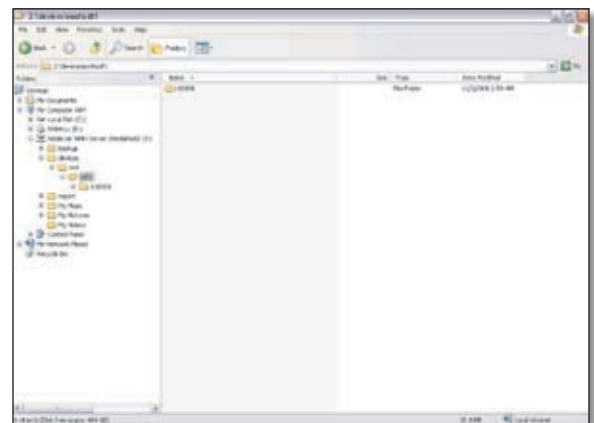
If you have a USB storage device or memory card directly connected to the Media Hub, you can access it through the Media Hub.

If you accessed the Media Hub through its Friendly Name or IP address, the name of the USB storage device or memory card is displayed. Double-click the name to access its files.



USB Storage Device Accessed Through Friendly Name

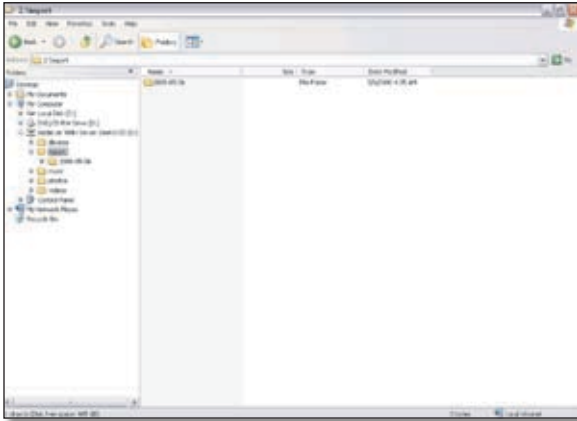
If you accessed the Media Hub through its drive letter, go to **media > devices > mnt**. The name of the USB storage device or memory card is displayed. Double-click the name to access its files.



USB Storage Device Accessed Through Drive Letter

### Import Folder

The media\import folder stores the data imported from USB storage devices or memory cards. The data is organized by the date of the data import.



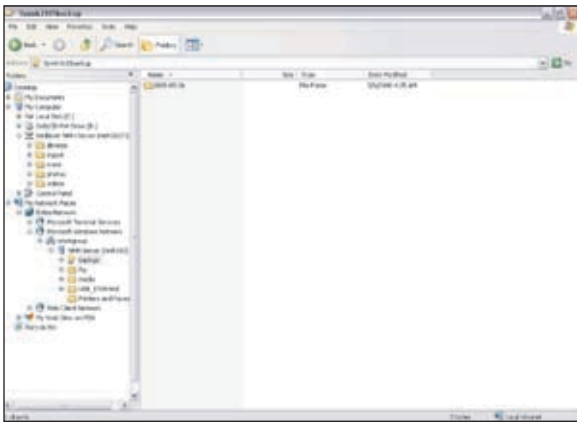
Data Imported from USB Storage Device

### Backup Folder

The backup folder stores the data backed up from USB storage devices or memory cards. The data is organized by the date of the data backup.



**NOTE:** Use the Friendly Name or IP address of the Media Hub to access the backup folder.



Data Backed Up from USB Storage Device



**NOTE:** You can map the backup folder as a separate drive. Refer to **Mapped Drive, page 8**.

### Instructions to Copy Media Files to the Media Hub

Follow these guidelines:

- Copy files of a single file type together at one time. For example, copy music files at one time; do not copy music, photo, and video files at the same time.
- Copy music files to the media\music folder of the Media Hub.
- Copy photo files to the media\photos folder of the Media Hub.
- Copy video files to the media\videos folder of the Media Hub.



**NOTE:** The files you copy to the Media Hub can be accessed by all users of the Media Hub.

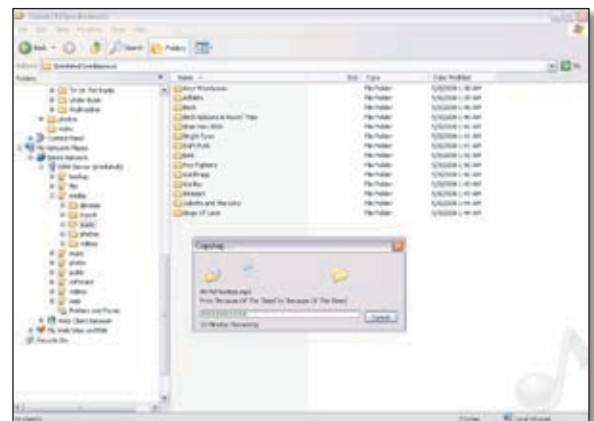
The following example describes the instructions to copy music files to the media\music folder of the Media Hub. Use similar instructions to copy the other types of files, photo or video.

1. In Windows Explorer, select the music files on your computer or other network device. Then go to **Edit > Copy**.



**NOTE:** If you have a USB storage device or memory card directly connected to the Media Hub, then its device name is displayed. Double-click the device name to access its files.

2. Open the **media\music** folder of the Media Hub.
3. Go to **Edit > Paste**.



Copy Music Files to Media Hub

The music files are copied to the media\music folder; this may take minutes or hours, depending on network conditions, including use of wireless, and the number and size of the selected files.



---

**NOTE:** Additional information about Windows Explorer is available in Windows Help.

---



---

**WEB:** For more information about the Media Hub, refer to the rest of the User Guide. You can also visit [\*\*www.linksysbycisco.com/support\*\*](http://www.linksysbycisco.com/support), and select the Media Hub.

---



## Chapter 3: Ways to Use the Media Hub

### Overview

This chapter describes how you can use the Media Hub:

- centralized storage
- digital media sharing
- on-demand backups
- automatic backup of your computers

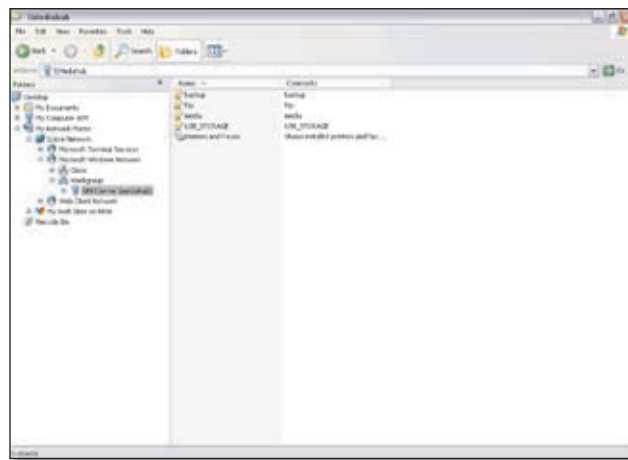
### Centralized Storage

The Media Hub is designed to store and share files for your network. Most people use Windows Explorer to manage the files of the Media Hub.

If the Remote Access service<sup>†</sup> is enabled, then use the File Browser for remote access of the Media Hub. (FTP is another option.) For more information about how to configure the remote access settings, refer to **Remote Access, page 39**.

### Local Access

Media files are typically stored on different computers and other network devices throughout the house. You can copy all of the media files to the Media Hub, so your media content is stored in one location for convenient access. Plus you have backup copies of your media files. Use Windows Explorer to add, copy, move, or delete files. Refer to **Drag-and-Drop, page 7**.



File Directory of Media Hub

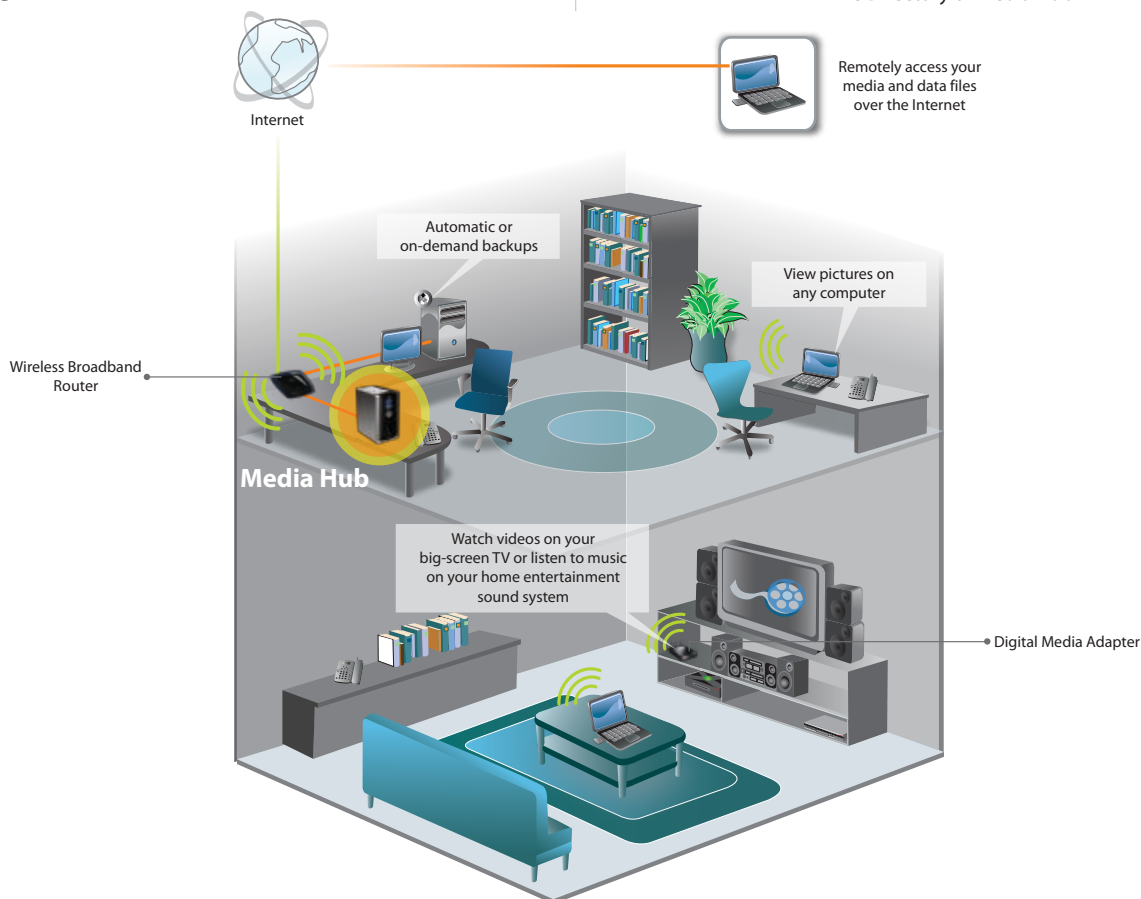


Diagram Showing the Media Hub

<sup>†</sup>Includes Remote Access service for one year from date of purchase. Fees may apply thereafter and are subject to change. Go to [www.linksysbycisco.com](http://www.linksysbycisco.com) for further information.



## Remote Access

If you enable and set up the Remote Access service, you can use the Media Hub over the Internet. For more information about how to configure the remote access settings, refer to **Remote Access, page 39**. Use the File Browser to add, copy, move, or delete files. Refer to **File Browser, page 23**.

## Digital Media Sharing

The Media Hub automatically indexes the digital media files it stores, so you can use a web browser to access them through the Media Browser.



Media Browser

## Media Browser

After you have copied media files to the Media Hub, use the *Media Browser* screen to access your home entertainment:

- Play music
- View photos
- Watch videos
- Manage media files

The Media Browser also lets you access devices directly connected to the Media Hub.

## USB Storage Devices

Both models of the Media Hub support USB storage devices.

You can connect USB storage devices to the USB ports at any time. All folders and files on these devices are available while the USB storage devices are connected to the Media Hub. Refer to **Drag-and-Drop, page 7**.

## Memory Cards

Only the Media Hub with LCD (NMH400 Series) supports direct connection of memory cards. All folders and files on these cards are available while the memory cards are

inserted into the Media Hub. Refer to **Drag-and-Drop, page 7**.

## Local Access

You can access the *Media Browser* screen from any computer using a web browser.

For more information, refer to **Chapter 4: Use of the Media Browser, page 15**.

## UPnP AV Media Server

If you have UPnP AV-enabled (or DLNA-certified) devices in your home, then you can use the Media Hub as a media server. (This service is enabled by default—no special setup required.) Such devices include digital media adapters and other devices, such as a gaming console with a built-in media player or digital picture frame.

For example, if you have a digital media adapter that sends content to your entertainment system, then the digital media adapter can locate the Media Hub using the UPnP AV standard. Media content on the Media Hub can then be accessed and played by the digital media adapter.

By default, the Media Hub automatically indexes the digital media files it stores. You have the option of indexing media files on your local network. If you use this option, the Media Hub scans its local content and any media content stored in UPnP AV-compatible servers connected to the local network. Refer to **Media Server, page 40**.

## iTunes Server

If you use iTunes, then you can use the Media Hub as a centralized location for your iTunes library. (This service is enabled by default—no special setup required.) Open iTunes on any of the computers on your network, and play any music or video file on the Media Hub.

## Remote Access

If you enable and set up the Remote Access service, you can use the Media Hub over the Internet. For more information about how to configure the remote access settings, refer to **Remote Access, page 39**.

With the Remote Access service, you can access media files through the Media Browser. Use the File Browser to add, copy, move, or delete files. Refer to **File Browser, page 23**.

Here are a few examples of remote access:

### View Pictures Remotely

You want to share pictures from your recent trip, but you forgot to bring the memory card you used. This is not a problem since you have set up your Media Hub for remote access.

1. On your friends' computer, open the web browser.

- Go to <http://www.ciscomediahub.com>.
- Enter the remote device name of your Media Hub, and then click **Go**.



**NOTE:** Depending on the web browser you are using, certificate or security warning screens may appear. To continue with the login process for remote access, accept the warnings. For more information, refer to **Appendix A: Troubleshooting, page 41**.

- Enter the password you created during the Setup Wizard (the default is **admin**). Then click **Submit**.
- On the *Media Browser* screen, click **Photos**. Navigate to the trip pictures.

Now you can view a slideshow of your trip pictures.


### Download Videos Remotely

You want to share videos from your recent trip, but they are stored on your Media Hub. Fortunately, you can access your Media Hub over the Internet.

- On your friends' computer, open the web browser.
- Go to <http://www.ciscomediahub.com>.
- Enter the remote device name of your Media Hub, and then click **Go**.



**NOTE:** Depending on the web browser you are using, certificate or security warning screens may appear. To continue with the login process for remote access, accept the warnings. For more information, refer to **Appendix A: Troubleshooting, page 41**.

- Enter the password you created during the Setup Wizard (the default is **admin**). Then click **Submit**.
- On the *Media Browser* screen, click **File Browser**.
- Navigate to the trip videos. Then click the **Download to PC** option .

Now you can download the videos to your friends' computer.


### Upload Pictures Remotely

Your relatives have pictures from a recent family reunion. The pictures are too large in size to send to your home e-mail address, so you decide to upload them to your Media Hub.

- On your relatives' computer, open the web browser.
- Go to <http://www.ciscomediahub.com>.
- Enter the remote device name of your Media Hub, and then click **Go**.



**NOTE:** Depending on the web browser you are using, certificate or security warning screens may appear. To continue with the login process for remote access, accept the warnings. For more information, refer to **Appendix A: Troubleshooting, page 41**.

- Enter the password you created during the Setup Wizard (the default is **admin**). Then click **Submit**.
- On the *Media Browser* screen, click **File Browser**. Then click the **Upload to Media Hub** option .

Now you can upload the photos to your Media Hub.

### Setup of Remote Access Feature

When you enable and set up the remote access feature, keep the following in mind:

- Every Media Hub has a unique Remote Device Name. If the name you want to use is already taken, then try an alternate name for your Media Hub.
- For remote access, open your web browser. Go to <http://www.ciscomediahub.com>. When prompted, enter the Remote Device Name and Password of your Media Hub.

For more information, refer to **Remote Access, page 39**.

## On-Demand Backups

### Computers

NTI Shadow is the backup tool you installed during the Setup Wizard. During installation, the Setup Wizard creates a default backup job with the "On Demand" option selected. (The default backup job also runs automatically.)

If you have backup jobs with the "On Demand" option selected, then you can use the on-demand backup feature of the Media Hub; for more information, refer to **NTI Shadow, page 29**.



**NOTE:** Your computer(s) must be powered on for the jobs to run.

For the Media Hub (NMH300 Series), you can press the back up button on the front panel to initiate backup jobs.

For the Media Hub with LCD (NMH400 Series), you can use the LCD menu to initiate backup jobs; refer to **Backup, page 25**.

### USB Storage Devices

Both models of the Media Hub support direct connection of USB storage devices. You can use the Media Browser to import media files; refer to **Devices, page 17**.

When you connect a USB storage device to the Media Hub with LCD (NMH400 Series), the LCD menu will ask if you want to import media files; click the **OK** button to confirm.

You can also use Windows Explorer to access the USB storage device. Then you can copy files to the Media Hub. Refer to **Drag-and-Drop, page 7**.

## Memory Cards

Only the Media Hub with LCD (NMH400 Series) supports direct connection of memory cards.

When you insert a memory card, the LCD menu will ask if you want to import media files; click the **OK** button to confirm.

You can use the Media Browser to import media files; refer to **Devices, page 17**.

Windows Explorer is another alternative; use it to access the memory card. Then you can copy files to the Media Hub. Refer to **Drag-and-Drop, page 7**.

## Automatic Backup of Computers

NTI Shadow is the backup tool you installed during the Setup Wizard. During installation, the Setup Wizard creates a default backup job, which runs automatically. (The default backup job also includes the “On Demand” option selected.) The default backup job backs up specific files in the My Documents folder; these files have the following file extensions: .doc, .xls, .pdf, .ppt, .adb, .rtf, .xml, .htm, .html, .txt, and .pst. The backup files are saved to the \backup\<Computer\_Name>\Documents folder on the Media Hub and are organized by date.

You can set up additional, automatic backup jobs. For instructions, refer to **Create Backup Job, page 29**.

## Chapter 4: Use of the Media Browser

This chapter describes the Media Browser, which is used to access your music, photos, and videos.

### How to Access the Media Hub

You can use Windows Explorer or your web browser to access the Media Hub. For more information about Windows Explorer, refer to **Drag-and-Drop, page 7**.

You can access the Media Browser via a web browser on a local computer connected to your router. Double-click the desktop icon that was created during the Setup Wizard. (If you enable and set up the Remote Access service, you can use the Media Hub over the Internet. Refer to **Remote Access Instructions, page 39**.)



Media Hub Desktop Icon

You can also follow these instructions:

1. Open your web browser.
2. In the *Address* field, enter one of the following:

**http://<Friendly\_Name>** (example: **http://Media1**)  
or  
**http://<IP\_address\_of\_Media\_Hub>**  
(example: **http://192.168.1.101**)

Press **Enter**.



**NOTE:** The Friendly Name is the name you created during the Setup Wizard. If you did not create a Friendly Name, use the default name; enter **http://mediahub**.



**NOTE:** For the Media Hub with LCD (NMH400 Series), look up its IP address through the LCD menu. Refer to **Status, page 26**.

For the Media Hub (NMH300 Series), look up its IP address through the router's web-based utility. Refer to the router's documentation for more information.



**NOTE:** To access the Media Browser from a Mac, use one of the following:

- **http://<Friendly\_Name>.local**
- **<Friendly\_Name>.local**
- **http://<IP\_address\_of\_Media\_Hub>**

3. If you do not have Adobe Flash Player (version 9 or higher) installed, you will be prompted to install it. Follow the on-screen instructions. (An active Internet connection is required.)

The *Media Browser* screen of the web-based utility appears.



Media Browser

### How to Use the Media Browser

Use the *Media Browser* screen to access your home entertainment:

- Play music
- View photos
- Watch videos

The Media Hub scans for music, photos, and videos. This activity may take several hours the first time the scan occurs, depending on the number of media files. Subsequent scans for updates will take less time.

The *Media Browser* screen displays thumbnail images of files found in the music, photos, videos, and import folders of the Media Hub (it will not display thumbnail images of sub-folders).



**NOTE:** The files you copy to the Media Hub can be accessed by all users of the Media Hub.

You have these options:

**Configuration** Access advanced settings through this option. Refer to **Chapter 7: Advanced Configuration, page 33** for more information.

**Re-Scan** Refresh the Media Hub's index of media files.

**Search** Use this option to search your files by keyword. Refer to **Search, page 17**.

**? (link to User Guide)** Access the online version of this User Guide through this option. (An active Internet connection is required.)



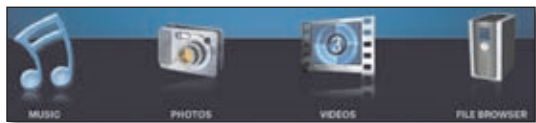
Media Browser > Configuration, Re-Scan, Search, ? (link to User Guide)

**Music** Click this option to access your music files. Refer to **Music, page 17**.

**Photos** Click this option to access your photo files. Refer to **Photos, page 20**.


**Videos** Click this option to access your video files. Refer to **Videos, page 22**.

**File Browser** Click this option to access the Media Hub's folder directory and manage your media files. Refer to **File Browser, page 22**.



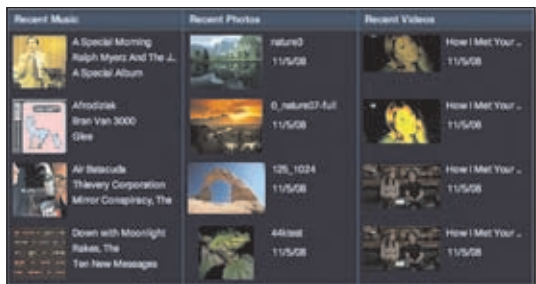
Media Browser > Music, Photos, Videos, File Browser

## Recent Music

The most recently added files are displayed. To play a music file, select it. Then click the **play** button .



**NOTE:** The Media Hub's built-in music player only supports the mp3 and wma audio format. Other files will open in the default player for the files' specific file extension(s).




Media Browser > Recent Music, Photos, Videos



**NOTE:** The Media Hub uses an online service to retrieve metadata such as album title, artist name, album cover art. No information about your music collection is stored by the online service.


## Recent Photos

The most recently added files are displayed. To view a photo, select it. Then click the **play** button .



**NOTE:** The Media Hub's built-in viewer only supports the jpeg format. Other files will open in the default viewer for the files' specific file extension(s).

## Recent Videos

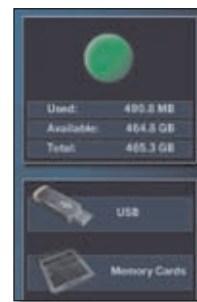
The most recently added files are displayed. To play a video, select it. Then click the **play** button .



**NOTE:** The Media Hub's built-in video player supports the same formats supported by the plug-ins of your web browser.

## Disk Space

The amounts of used, available, and total disk space of the Media Hub are displayed.



Media Browser > Disk Space, USB, Memory Cards

## USB

The *Media Browser* screen displays the number of USB storage devices directly connected to the Media Hub. You can connect USB storage devices to the USB ports at any time. All folders and files on these devices are available while the USB storage devices are connected to the Media Hub.



**NOTE:** Detection of a new USB storage device or memory card may take up to one minute.

Double-click the USB icon to access status information or import media files. A new screen appears. Refer to **Devices, page 17**.

## Memory Cards

Only the Media Hub with LCD (NMH400 Series) supports direct connection of memory cards.



The *Media Browser* screen displays the number of memory cards directly connected to the Media Hub. All folders and files on these cards are available while the memory cards are inserted into the Media Hub.

Double-click the memory card icon to access status information or import media files. A new screen appears. Refer to **Devices**, page 17.

### Devices

For the selected device, the amounts of used, available, and total storage space are displayed.



Devices

**Import Media** To copy the media files on the device to the Media Hub, click this option.



Importing

When the import is complete, click **OK**.

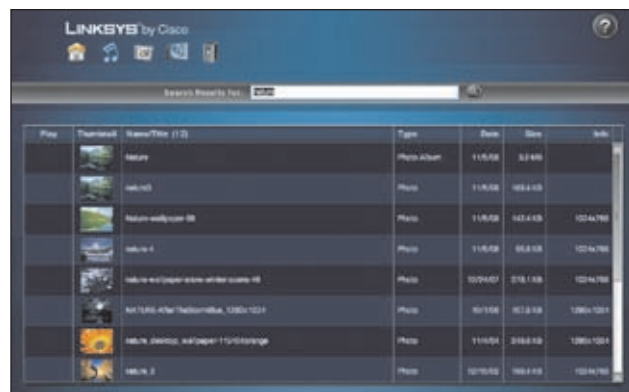
### Other Devices

Click the **left** or **right arrow** button to scroll through the other devices.

**Cancel** To exit the *Devices* screen, click this option.

### Search

Enter the keyword, and then click the **magnifying glass** button. The *Search Results* screen appears.





Search Results

### Use Search Results

**Search results for** The keyword is displayed.

The search results are listed in a table with the following option and information:

**External Play** To use the computer's external player, click the **external play** button .

**Play** To use the Media Hub's built-in player or viewer, click the **play** button .

**Thumbnail** A thumbnail of the photo or associated image is displayed.

**Name/Title** The name of the file is displayed.

**Type** The file type is displayed.

**Date** The date when the file was last saved is displayed.

**Size** The size of the file is displayed.

**Info** Descriptive information is displayed.

The initial search automatically includes music, photo, and video files.

### Navigation

Four icons are displayed at the top of the screen.

**House** To return to the *Media Browser* screen at any time, click the **house** icon.

**Music** To view your music files, click the **Music** icon.

**Photos** To view your photo files, click the **Photos** icon.

**Videos** To view your video files, click the **Videos** icon.

**File Browser** To access the Media Hub's folder directory and manage your media files, click the **File Browser** icon.


### Music

After you click the Music option, the *Music* screen appears. View your music files by category:

- Album
- Artist

- Recent
- Song

The thumbnail view is automatically displayed. At the bottom right of the screen, the number of pages is listed. Use the slider to move from page to page.

For a list with details, click the **list view** button  at the bottom left of the screen.



Music > Song (Thumbnail View)

When you are viewing any music category, select the music file you want.

**Play** Click the **play** button to play the music using the Media Hub's built-in player.



**NOTE:** The Media Hub's built-in music player supports the mp3 and wma audio formats. Other files will open in the default player for the files' specific file extension(s).

A new screen opens with the name of the song displayed.

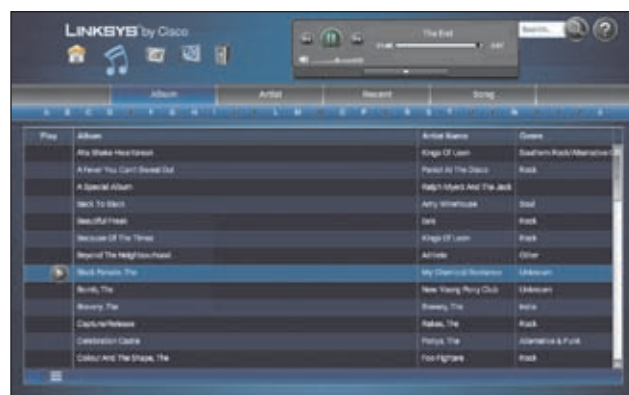
- **Play/Pause** Click the button to pause the song. Click it again to resume.
- **Previous** If you are playing an album, click the **previous** button to move to the previous song in the album.
- **Next** If you are playing an album, click the **next** button to move to the next song in the album.
- **Timer** The timer shows the duration of the song played and the duration of the rest of the song.
- **Volume** Use the slider to change the volume level.

Click the **down** arrow to display the song title and duration of the complete song.

To return to the *Media Browser* screen at any time, click the **house** icon. To switch to photos, click the **Photos** icon. To switch to videos, click the **Videos** icon. To access the Media Hub's folder directory and manage your media files, click the **File Browser** icon.

## Album

The alphabet is displayed at the top of the screen. Click the letter that starts the name of the album you want.



Music > Album (List View)

In the list view, the albums are listed in a table with the following option and information:

**Play** To play a music file, click the **play** button.

**Album** The name of the album is displayed.

**Artist Name** The name of the artist is displayed.

**Genre** The genre of the song is displayed.

For more information about an album, double-click its thumbnail or name (list view).



Music > Album (Song Tracks View)

The names of the album and artist are displayed.

**Play Entire Album** To play all songs, click the **play** button.

The song tracks are listed in order.

**External Play** To play a music file using an external player, click the **external play** button on the left. (The external player is the default music player application on your computer.)

**Play** To play a music file using the Media Hub's built-in player, click the **play** button on the right.



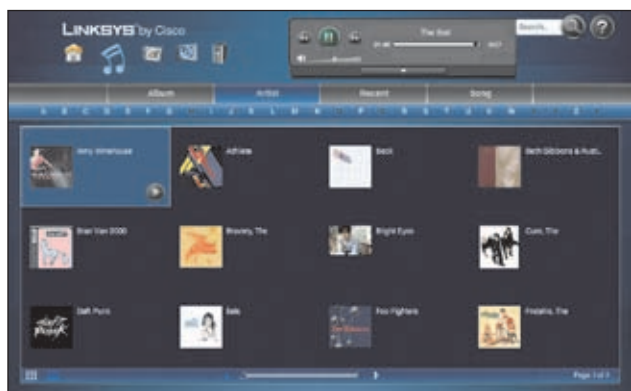
# The track number is displayed. Click the **up** or **down** arrow to change the track order (ascending or descending).

**Song** The title of the song is displayed.

**Duration** The duration of the complete song is displayed.

## Artist

The alphabet is displayed at the top of the screen. Click the letter that starts the name of the artist you want.



Music > Artist (Thumbnail View)

In the list view, the artists are listed in a table with the following option and information:

**Play** To play music by an artist, click the **play** button.

**Artist Name** The name of the artist is displayed.

## Recent

The most recently added files are displayed.



Music &gt; Recent (List View)

In the list view, the songs are listed in a table with the following option and information:

**Play** To play a music file, click the **play** button.

**Song** The title of the song is displayed.

**Album** The name of the album is displayed.

**Artist Name** The name of the artist is displayed.

**Genre** The genre of the song is displayed.

**Duration** The duration of the complete song is displayed.

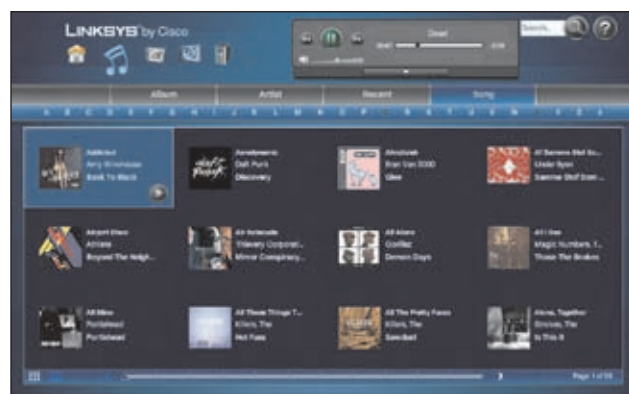
In the list view, there are two play buttons available.

**External Play** To play a music file using an external player, click the **external play** button on the left. (The external player is the default music player application on your computer.)

**Play** To play a music file using the Media Hub's built-in player, click the **play** button on the right.

## Song

The alphabet is displayed at the top of the screen. Click the letter that starts the name of the song you want.



Music > Song (Thumbnail View)

In the list view, the songs are listed in a table with the following option and information:

**Play** To play a music file, click the **play** button.

**Artist Name** The name of the artist is displayed.

**Album** The name of the album is displayed.

**Song** The title of the song is displayed.

**Genre** The genre of the song is displayed.

**Duration** The duration of the complete song is displayed.

**Loc** The location of the song is displayed.

In the list view, there are two play buttons available.

**External Play** To play a music file using an external player, click the **external play** button on the left. (The external player is the default music player application on your computer.)


**Play** To play a music file using the Media Hub's built-in player, click the **play** button on the right.

## Photos

After you click the Photos option, the *Photos* screen appears. View your photo files by category:

- Album
- Date
- Name
- Recent

The thumbnail view is automatically displayed. At the bottom right of the screen, the number of pages is listed. Use the slider to move from page to page.

For a list with details, click the **list view** button  at the bottom left of the screen.



Photos > Album (Thumbnail View)

When you are viewing any photo category, select the photo file you want.

**Play** Click the **play** button to view the photo.



**NOTE:** The Media Hub's built-in viewer supports the jpeg format. Other files will open in the default viewer for the files' specific file extension(s).

A slideshow automatically begins. Click the screen to display thumbnails and options at the top of the screen. Mouse over a photo to display a larger thumbnail, or click a photo to display it within your web browser.



Photos > Slideshow

Options are listed at the top of the screen and are described below starting on the left of the screen.

- **Previous Page** Click the **left arrow** button to view the previous page of photos.
- **Previous** Click the **minus** button to view the previous photo.
- **Scroll Left** Click the **left bracket** button to scroll through the photos to the left.
- **Scroll Right** Click the **right bracket** button to scroll through the photos to the right.
- **Next Page** Click the **right arrow** button to view the next page of photos.
- **Slidebar** Click and then move the **slidebar** to change the display duration; select **2, 5, 10, 30, or 60 Seconds Delay**.
- **Pause** Click the **pause** button to pause the photo on display.
- **Enter Full Screen** Click the **enter full screen** button to display the slideshow on the entire screen. Click this button again or press **ESC** to exit full screen mode.
- **Close Show** Click the **close show** button to return to the *Photos* screen.

If the options disappear, click anywhere on the screen to make the options reappear.

To return to the *Media Browser* screen at any time, click the **house** icon. To switch to music, click the **Music** icon. To switch to videos, click the **Videos** icon. To access the Media Hub's folder directory and manage your media files, click the **File Browser** icon.

## Album

The alphabet is displayed at the top of the screen. Click the letter that starts the name of the album you want.



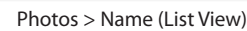
**Photo-Album** The name of the album is displayed.

The months are displayed at the top of the screen. Click the month of the photos you want.



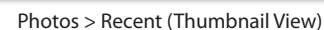
**Loc** The location of the photo is displayed.

The alphabet is displayed at the top of the screen. Click the letter that starts the name of the photo you want.



**Loc** The location of the photo is displayed.

The most recently added files are displayed.



**Play** To view a photo file, click the **play** button.

**Date** The date when the photo was last saved is displayed.

**Photo** The name of the photo is displayed.

**Photo-Album** The name of the album is displayed.


**Size** The size of the file is displayed.

**Dimension** The dimensions in width by height (in pixels) are displayed.

## Videos

After you click the Videos option, the *Videos* screen appears. View your video files by category:

- Name
- Recent

The thumbnail view is automatically displayed. For a list with details, click the **list view** button  at the bottom of the screen.



Videos > Recent (Thumbnail View)

When you are viewing any video category, select the video file you want.

**Play** Click the **play** button to play the video using the Media Hub's built-in player.



**NOTE:** The Media Hub's built-in player supports the same formats supported by the plug-ins of your web browser.

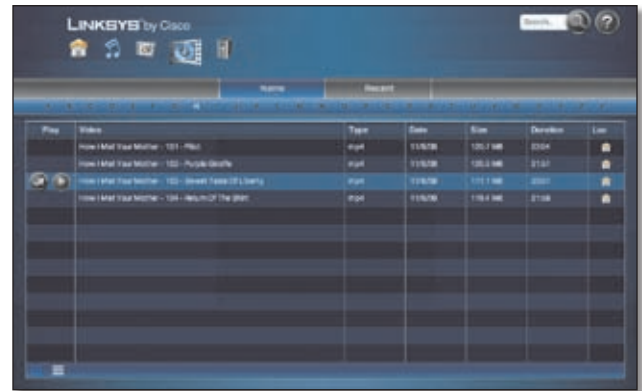
A new screen opens.

- **Sliderbar** Use the video slider to move forward or backward in the video.
- **Volume** Use the volume slider to change the volume level.
- **Play/Pause** Click the button to pause the video. Click it again to resume.
- **Stop** Click the **stop** button to stop the video. Click the **X** button to exit the screen.

To return to the *Media Browser* screen at any time, click the **house** icon. To switch to music, click the **Music** icon. To switch to photos, click the **Photos** icon. To access the Media Hub's folder directory and manage your media files, click the **File Browser** icon.

## Name

The alphabet is displayed at the top of the screen. Click the letter that starts the name of the video you want.



Videos > Name (List View)

In the list view, the videos are listed in a table with the following option and information:

**Play** To play a video file, click the **play** button.

**Video** The name of the video is displayed.

**Type** The type of video is displayed.

**Date** The date when the video was last saved is displayed.

**Size** The size of the file is displayed.

**Duration** The duration of the video is displayed.

**Loc** The location of the video is displayed.

In the list view, there are two play buttons available.

**External Play** To play a video file using an external player, click the **external play** button on the left. (The external player is the default video application on your computer.)

**Play** To play a video file using the Media Hub's built-in player, click the **play** button on the right.

## Recent

The most recently added files are displayed.





Videos &gt; Recent (Thumbnail View)

In the list view, the videos are listed in a table with the following option and information:

**Play** To play a video file, click the **play** button.

**Video** The name of the video is displayed.

**Type** The type of video is displayed.

**Date** The date when the video was last saved is displayed.

**Size** The size of the file is displayed.

**Duration** The duration of the video is displayed.

**Loc** The location of the video is displayed.

In the list view, there are two play buttons available.

**External Play** To play a video file using an external player, click the **external play** button on the left. (The external player is the default video application on your computer.)

**Play** To play a video file using the Media Hub's built-in player, click the **play** button on the right.

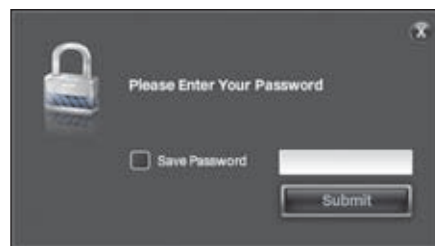
## File Browser

Use the File Browser option to access the Media Hub's folder directory and manage your media files.



**NOTE:** With the File Browser, you have access to the Media Hub only. To copy files from your computer to the Media Hub, use Windows Explorer. Refer to **Drag-and-Drop, page 7**.

After you click the File Browser option, the password screen appears.

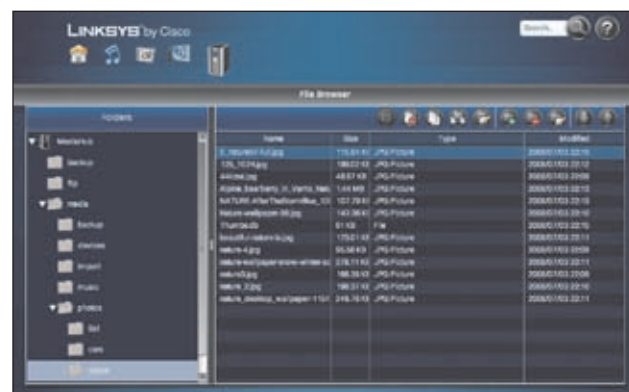


Password Screen

Enter the password you created during the Setup Wizard (the default is **admin**). Click **Submit**.

To open the appropriate folder, use the Directory Tree the same way you would use Windows Explorer. When you mouse over an icon, the tooltip displays its function.

**Reload** Click this option to reload the directory structure.



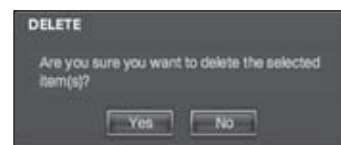
File Browser &gt; Media Hub &gt; Media &gt; Photos

The files are listed with the following information: Name, Size, Type of file, and Modified by date.

Options are listed above the list of files.

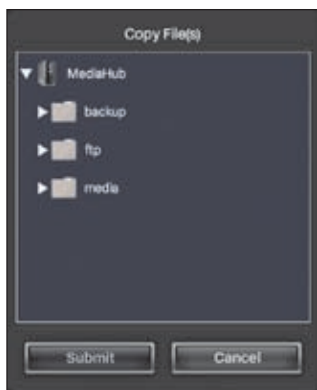
**Refresh file list** Click this option to update the list.

**Delete File** Select a file, and then click this option. On the **Delete** screen, click **Yes** to delete the file.



Delete File

**Copy File** Select a file, and then click this option. On the **Copy File(s)** screen, select the location for the copy, and then click **Submit**.



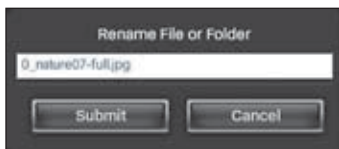
Copy File

**Move File** Select a file, and then click this option. On the *Move File(s)* screen, select the location for the move, and then click **Submit**.



Move File

**Rename File** Select a file, and then click this option. On the *Rename File or Folder* screen, enter the new name, and then click **Submit**.



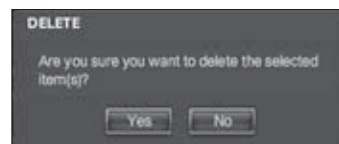
Rename File or Folder

**New Folder** Click this option to create a new folder. On the *New Folder* screen, enter the name, and then click **Submit**.



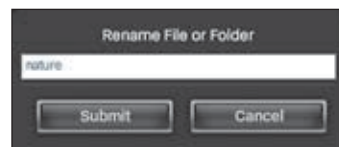
New Folder

**Delete Folder** Select a folder, and then click this option. On the **Delete** screen, click **Yes** to delete the folder.



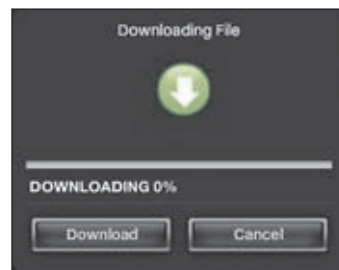
Delete Folder

**Rename Folder** Select a folder, and then click this option. On the *Rename File or Folder* screen, enter the new name, and then click **Submit**.



Rename Folder

**Download to PC** Select a file, and then click this option. On the *Download to PC* screen, click **Download**.



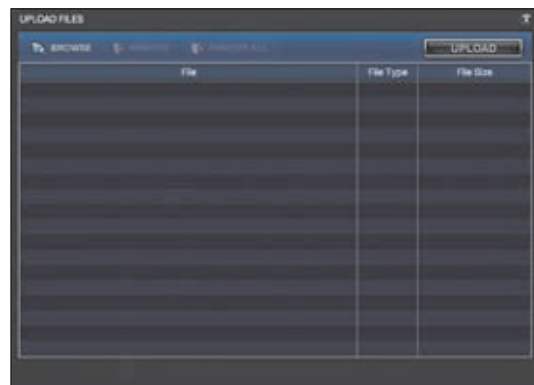
Download to PC

**Upload to Media Hub** Click this option to upload files to the Media Hub. The *Upload Files* screen appears.

- **Browse** Click this option to select files.
- **Remove** To remove a file from the upload list, select the file, and then click this option.
- **Remove All** To remove all files from the upload list, click this option.

The upload list displays File name, File Type, and File Size for all files.

- **Upload** To upload files to the Media Hub, click this option.



Upload to Media Hub

## Chapter 5: Use of the LCD Menu

This chapter describes functions of the LCD menu, which is only featured on the Media Hub with LCD (NMH400 Series). Use the LCD menu to do the following:

- initiate backup jobs for computer(s) running the backup tool (Refer to **NTI Shadow**, [page 29](#) for more information.)
- back up or import files from your USB storage device or memory card to the Media Hub
- display status information for the Media Hub



**NOTE:** For the IP address of the Media Hub, go to **Status > Network**.

- configure LCD screen settings
- power off the Media Hub



Media Hub with LCD (NMH400 Series)

### How to Navigate the LCD Menu

Use the navigation pad to navigate the LCD menus. Press the up or down arrow to move up or down the menu choices. Press the right arrow to move to a lower menu level. Press the left arrow to move to a higher menu level.

The OK button has three functions:

- To select a menu choice, press the **OK** button.

- While the Media Hub is booting up, press the **OK** button to boot backup firmware from the hard drive.
- To display the main menu, press the **OK** button.

### How to Access the LCD Menu

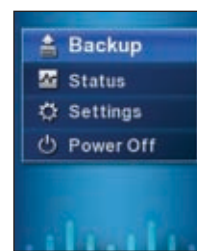
After the Media Hub is powered on and boots up, the main menu is displayed and offers these options:

**Backup** Select this option to initiate computer or device backup jobs.

**Status** Select this option to view space, usage, or network information.

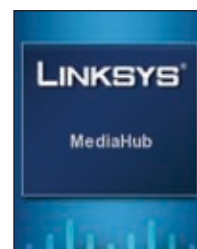
**Settings** Select this option to configure the screensaver or backlight settings. You can also upgrade the firmware of the Media Hub.

**Power Off** Select this option to power off the Media Hub.



Main Menu

If the screensaver with the Friendly Name is displayed, press the **OK** button to activate the LCD menu.



Screensaver

### Backup

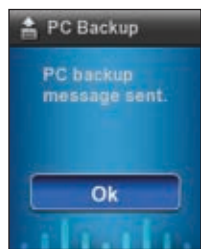
The *Backup* screen allows you to copy files from your computers or devices to the Media Hub.



Backup



**PC Backup** Select this option to initiate backup jobs specified by the backup tool on your computer. (Your computer must be powered on for the jobs to run.)



PC Backup

After the Media Hub sends the backup message to your computer, click **OK** to return to the *Backup* menu.



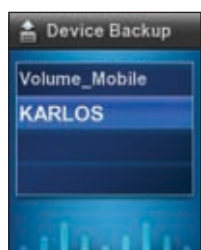
**NOTE:** The Setup Wizard automatically installs a backup tool on your computer to run backup jobs (unless you choose not to install it); refer to **NTI Shadow, page 29**. If you have installed the backup tool, then you can use the computer backup feature of the Media Hub.

**Device Backup** To back up a device directly connected to the Media Hub, select **Device Backup**.

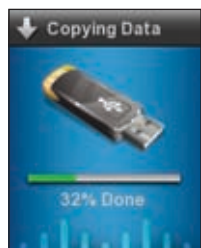


**NOTE:** You can directly connect USB storage devices to both series of the Media Hub. Only the Media Hub with LCD (NMH400 Series) supports direct connection of memory cards.

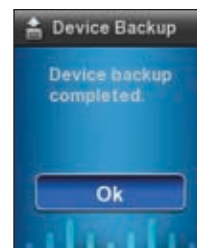
On the *Device Backup* screen, select the device you want to back up.



Device Backup



Copying Data



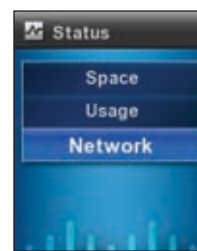
Device Backup

After all files have been copied to the Media Hub, click **OK** to return to the *Backup* menu.

Backup data is saved to the media/backup folder, which organizes the data by the date of the data backup. Refer to **Backup Folder, page 9**.

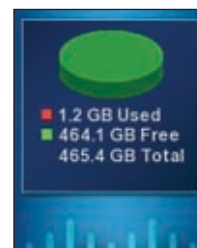
## Status

The *Status* screen allows you to display information about the Media Hub.



Status

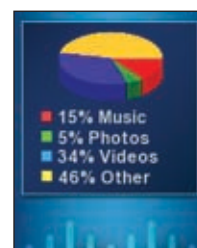
**Space** Select this option to view the amounts of used, available, and total memory.



Space

Press the left arrow to return to the *Status* menu.

**Usage** Select this option to view the percentages of the Media Hub used by Music, Photos, Videos, and Other media.



Usage

Press the left arrow to return to the *Status* menu.

**Network** Select this option to view the status of the Internet connection, status of the Local Area Network (LAN) connection, and local IP address of the Media Hub.



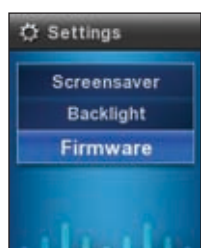
Network

- **Internet** The icon is green if there is a connection to the Internet. It is red if there is no connection.
- **LAN** The icon is green if there is a connection to the local network. It is red if there is no connection.
- **IP Address** You can use the local IP address of the Media Hub to access its web-based utility. Refer to **Chapter 7: Advanced Configuration, page 33** for more information.

Press the left arrow to return to the *Status* menu.

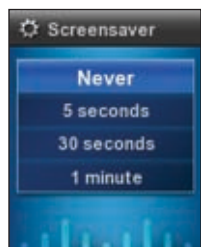
## Settings

The *Settings* screen allows you to configure the LCD screen settings. You can also upgrade the firmware of the Media Hub.



Settings

**Screensaver** Select this option to configure the wait time before the screensaver activates.



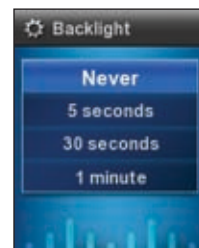
Screensaver

- **Never** If you never want to use the screensaver, select this option.

- **5 seconds** If you want the screensaver to activate after five seconds of LCD inactivity, select this option.
- **30 seconds** If you want the screensaver to activate after 30 seconds of LCD inactivity, select this option.
- **1 minute** If you want the screensaver to activate after one minute of LCD inactivity, select this option.

Press the left arrow to return to the *Settings* menu.

**Backlight** Select this option to configure the duration of the backlight for the LCD screen.



Backlight

- **Never** If you never want to use the backlight, select this option.
- **5 seconds** If you want the backlight to last five seconds, select this option.
- **30 seconds** If you want the backlight to last 30 seconds, select this option.
- **1 minute** If you want the backlight to last one minute, select this option.

Press the left arrow to return to the *Settings* menu.

**Firmware** Select this option to view the version numbers of the current and latest firmware. You can also upgrade the firmware of the Media Hub.



Firmware

- **Current version** The version number of the current firmware is displayed.
- **Latest version** The version number of the latest available firmware is displayed.
- **Update** Click **Update** to upgrade the firmware to the latest version available.



**WARNING:** Do not reboot or power off the Media Hub during the firmware upgrade.

Press the left arrow to return to the *Settings* menu.

## Power Off

The *Power Off* screen allows you to power off the Media Hub from the front panel.



Power Off

Click **Yes** to confirm the power-off, or click **No** to cancel.

## Alerts

The LCD menu also displays informative alert messages. This section describes the possible messages.

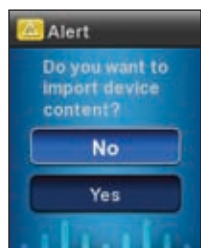
### New Device Alert

A new device is connected to the Media Hub. Click **OK**.



New Device Alert

On the *Alert* screen, click **Yes** to copy media files of the new device to the Media Hub, or click **No** to cancel.

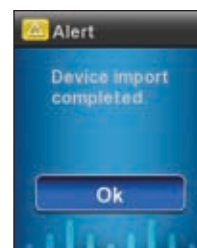


Import Device Content

If you clicked **Yes**, then the Media Hub will copy media files of the new device to the Media Hub.



Importing



Data Import Done

After the media files have been copied, click **OK**.

Import data is saved to the media/import folder, which organizes the data by the date of the data import. Refer to **Backup Folder, page 9**.



**NOTE:** To back up all files of the new device, refer to **Backup, page 25**. (The Import option only copies media files.)

## Chapter 6: File Backup

### Overview

This chapter describes how to back up files to the Media Hub. NTI Shadow is the backup tool you installed during the Setup Wizard. You can initiate on-demand backup jobs or set up automatic backup jobs to automatically copy your documents to the Media Hub for safekeeping.

(If you did not choose to install the backup tool, then NTI Shadow will not be available. To install NTI Shadow, run the Setup Wizard on the enclosed CD-ROM and click **Connect Computers**.)

### NTI Shadow

#### Access

Double-click the system tray icon to access the Media Importer.



NTI Shadow System Tray

If you do not see the icon, go to **Start > All Programs > Cisco Media Hub > NTI Shadow**.

#### System Tray Icon Menu

Right-click the system tray icon to view the following options:



NTI Shadow Icon Menu

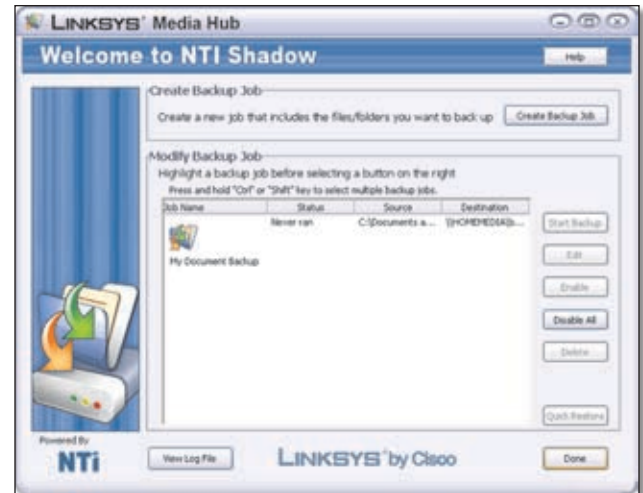
**Shadow Setting** Click this option to open NTI Shadow.

**About NTI Shadow** Click this option to view the version number of NTI Shadow.

**Exit** Click this option to exit NTI Shadow.

#### Main Menu

The main menu appears.



NTI Shadow Main Menu

#### Create Backup Job

**Create Backup Job** Click this option to create a backup job. Follow the instructions in the section, **Create Backup Job**, page 29.

#### Modify Backup Job

Backup jobs are listed. Options are described in the section, **Modify Backup Job**, page 31.

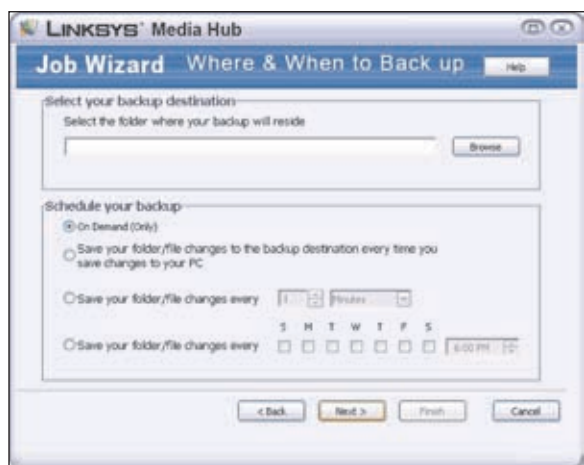
#### Create Backup Job

1. After you have clicked **Create Backup Job**, the *Select Folders/Files* screen appears. Select the folders and files you want to back up. Then click **Next**.



Create Backup Job

- Click **Browse** to select the Media Hub.



Where &amp; When to Back up

- Click **Computer** or **My Computer**. Select the Media Hub, and then select the folder you want. (The backup folder is recommended.)

To create a folder, click **Make New Folder**. Enter a name.

Then click **OK**.

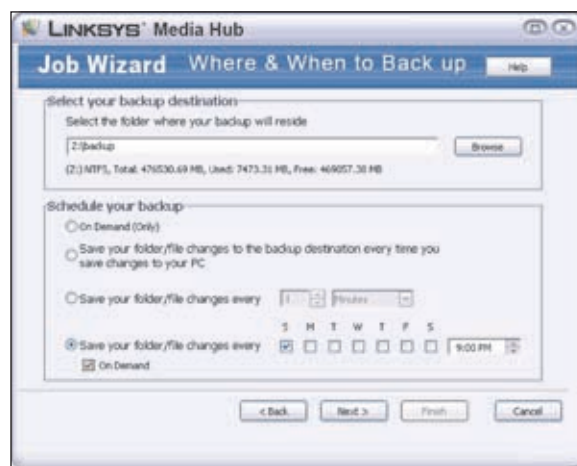


Browse For Folder

- Select one of the following schedule options:
  - On Demand (Only)** Select this option to start a backup job manually, either through NTI Shadow or the Backup feature on the Media Hub (refer to **On-Demand Backup, page 31** for more information).
  - Save your folder/file changes to the backup destination every time you save changes to your PC** Select this option to start a backup job every time incremental changes are made to your folders or files.
  - Save your folder/file changes every** Select this option to start a backup job as often as you specify in minutes, hours, or days. Select **On Demand** if you want to start the backup job using the Backup feature on the Media Hub (refer to **On-Demand Backup, page 31** for more information).

- Save your folder/file changes every** Select this option to start a backup job according to the schedule you specify. Select **On Demand** if you want to start the backup job using the Backup feature on the Media Hub (refer to **On-Demand Backup, page 31** for more information).

Then click **Next**.



Where &amp; When to Back up

- Select one of the following save options:

- Save all the previous file versions** Select this option if you want to save all previous versions.
- Save a limited number of previous versions** Select this option if you want to save the number of previous versions you specify.
- Do not save any previous file versions** Select this option if you do not want to save any previous versions.

Then click **Next**.

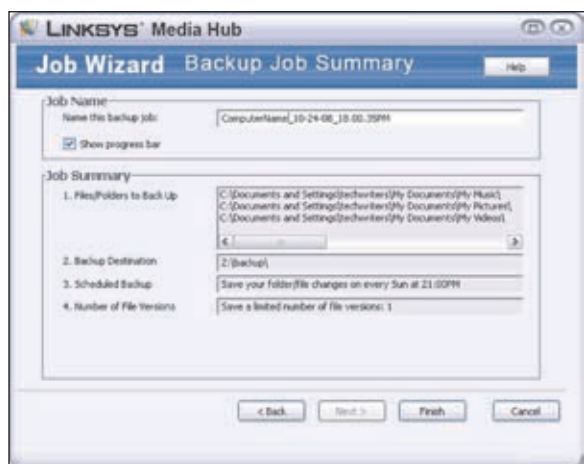


File Versions



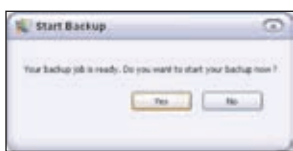
6. Review the settings. To change the settings, click **Back**.

If the settings are correct, click **Finish** to save the backup job.



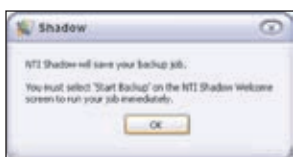
Backup Job Summary

7. To start your backup job now, click **Yes**. Otherwise, click **No**.



Start Backup

8. NTI Shadow will save your backup job. Click **OK**.



Save Your Backup Job

9. The new backup job is now listed in the Modify Backup Job section.



NTI Shadow Main Menu

## Modify Backup Job

The Setup Wizard creates a default backup job that backs up specific files in the My Documents folder; these files use the following file formats and extensions: .doc, .xls, .pdf, .ppt, .adb, .rtf, .xml, .htm, .html, .txt, and .pst.

For any existing backup job, select it, and then click one of the following options:

**Start Backup** Click this option to start a backup job.

**Edit** Click this option to change a backup job.

**Disable** Click this option to disable a backup job.

**Disable All** Click this option to disable all backup jobs.

**Delete** Click this option to delete a backup job.

To exit NTI Shadow, click **Done**.



**NOTE:** For more information about NTI Shadow, click **Help**.

## Backup Jobs

On-demand and automatic backup options are available.

Before you can run a backup job, check the following:

- Your computer(s) must be powered on for the jobs to run.
- The backup software must be installed on every computer you want to back up.

## Automatic Backup

For automatic backups, use the backup software to create and schedule automatic backup jobs. Make sure you set the backup destination to be the Media Hub. Refer to **Create Backup Job, page 29**.

## On-Demand Backup

There are three ways to initiate a backup job using the Media Hub:

- LCD menu (Media Hub with LCD, NMH400 Series)
- back up button (Media Hub, NMH300 Series)
- web-based utility (both series of the Media Hub)

You can also use the backup software to initiate a backup job.



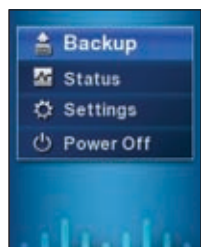
**NOTE:** When you set up the options of your backup job through the backup software, make sure the "On Demand" option is selected.

Follow the instructions for the method you want to use.

## Backup Using LCD Menu

The LCD menu is available on the Media Hub with LCD (NMH400 Series).

1. If the screensaver is displayed, press the **OK** button to activate the LCD menu.
2. On the Main Menu, select **Backup**.



Main Menu

3. Select **PC Backup** to initiate backup jobs specified by the backup software on your computer(s).



Backup

4. After the Media Hub sends the backup message to your computer, click **OK** to return to the *Backup* menu.



PC Backup

## Back Up Button

The back up button screen is available on the Media Hub (NMH300 Series).

To initiate backup jobs specified by the backup software on your computer, press the **back up** button.



Back Up Button

## Both Series of the Media Hub

1. Access the web-based utility of the Media Hub. (Refer to **Chapter 7: Advanced Configuration, page 33.**)
2. On the *Media Browser* screen, click **Configuration**.
3. Enter your password, and then click **Submit**.
4. Click the **Backup** tab.
5. Click **Backup** to initiate backup jobs specified by the backup software on your computer(s).



Backup



## Chapter 7: Advanced Configuration



**NOTE:** When first installing the Media Hub, you should use the Setup Wizard on the Setup CD-ROM. If you want to configure advanced settings, use this chapter.

After setting up the Media Hub with the Setup Wizard (located on the CD-ROM), it is ready for use. If you want to change its advanced settings, use the web-based utility. This chapter describes each web page of the utility and each page's key functions. You can access the utility via a web browser on a local computer connected to your router. (If you enable and set up the Remote Access service, you can use the Media Hub over the Internet. Refer to [Remote Access Instructions, page 39](#).)

### How to Access the Web-Based Utility

To access the Media Hub from any computer using a web browser, double-click the desktop icon that was created during the Setup Wizard.



Media Hub Desktop Icon

You can also follow these instructions:

1. Open your web browser.
2. In the *Address* field, enter one of the following:

**http://<Friendly\_Name>** (example: **http://Media1**)  
or

**http://<IP\_address\_of\_Media\_Hub>**  
(example: **http://192.168.1.101**)

Press **Enter**.



**NOTE:** The Friendly Name is the name you created during the Setup Wizard. If you did not create a Friendly Name, use the default name; enter **http://mediahub**.



**NOTE:** For the Media Hub with LCD (model number: NMH405), look up its IP address through the LCD menu. Refer to [Status, page 26](#).

For the Media Hub (NMH300 Series), look up its IP address through the router's web-based utility. Refer to the router's documentation for more information.



**NOTE:** To access the Media Browser from a Mac, use one of the following:

- **http://<Device\_Name>.local**
- **<Device\_Name>.local**
- **http://<IP\_address\_of\_Media\_Hub>**

3. If you do not have Adobe Flash Player (version 9 or higher) installed, you will be prompted to install it. Follow the on-screen instructions. (An active Internet connection is required.)
4. The *Media Browser* screen of the web-based utility appears. Click **Configuration**.

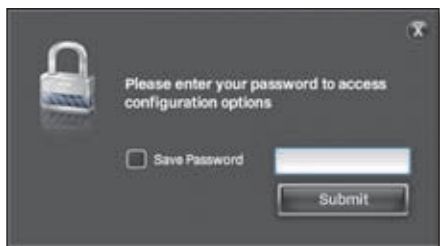


Media Browser Screen



**NOTE:** For more information about the *Media Browser* screen, refer to [Chapter 4: Use of the Media Browser, page 15](#).

5. The password screen appears. Enter the password you created during the Setup Wizard (the default is **admin**). Click **Submit**.



Password Screen

The Overview screen appears.



Overview

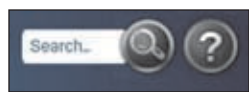
## Overview

On the Overview screen, five tabs are available. To access the *System*, *Disk*, *Backup*, or *Services* screen, click the appropriate tab. To return to the Overview screen, click the **Overview** tab.

The Overview screen displays information about the Media Hub and configuration options.

**Search** Use this option to search your files by keyword. Refer to **Search**, page 17.

**? (link to User Guide)** Access the online version of this User Guide through this option. (An active Internet connection is required.)



Overview &gt; Search, ? (link to User Guide)

To return to the *Media Browser* screen at any time, click the **house** icon. To switch to photos, click the **Photos** icon. To switch to videos, click the **Videos** icon. To access the Media Hub's folder directory and manage your media files, click the **File Browser** icon.

## System

The name and local IP address of the Media Hub are displayed.

**Configure System** Click this option to access system settings. Refer to **System**, page 34.

## Disk

The amounts of used, available, and total disk space are displayed.

**View Details** Click this option to view more information. Refer to **Disk**, page 36.

## Services

The Media Hub supports Remote Access, Windows File Sharing, Media Server, iTunes Server, and FTP Server.

**Configure Services** Click this option to access service settings. Refer to **Services**, page 39.

## System

Configure the system and network settings. You can also upgrade the Media Hub's firmware or remotely reboot it.



System

**Hostname** The hostname of the Media Hub is displayed.

**MAC Address** The MAC address of the Media Hub is displayed.

**Serial Number** The serial number of the Media Hub is displayed.

**Model** The model number of the Media Hub is displayed.

**Firmware Version** The version number of the firmware is displayed.

**Media Browser Software Version** The version number of the Media Browser software is displayed.

**UpTime** The number of minutes the Media Hub has been running is displayed.

**Media Hub Name** The name of the Media Hub is displayed.

**Workgroup** The name of the workgroup is displayed.

**Change** Click this option to change the name and/or workgroup.

 A dialog box titled "Change System Name" with two input fields: "Media Hub Name" containing "MediaHub" and "Workgroup:" containing "WORKGROUP". Below the fields are "Submit" and "Cancel" buttons.

Change System Name

- **Media Hub Name** Enter the new name.
- **Workgroup** Enter the new workgroup name.

Click **Submit** to save your changes, or click **Cancel** to cancel your changes.

**IP Address** The local IP address of the Media Hub is displayed.

**Change** Click this option to change the network settings.

 A dialog box titled "IP/DNS Configuration" with a checked checkbox for "Enable DHCP". Below are input fields for "IP Address" (192.168.1.102), "Subnet Mask" (255.255.255.0), "Gateway" (192.168.1.1), "DNS Server 1" (171.70.168.183), and "DNS Server 2" (171.68.228.120). "Submit" and "Cancel" buttons are at the bottom.

IP/DNS Configuration

- **Enable DHCP** If you want to allow your network router to assign a dynamic IP address to the Media Hub, select this option. (It is enabled by default.)  
If you disable the DHCP server feature, then you configure static network settings:
- **IP Address** Enter the local IP address you want to assign to the Media Hub.



**NOTE:** If you change the IP address, you may have to re-assign the drive letter to the Media Hub. Run the Setup Wizard on the enclosed CD-ROM (click **Connect Computers**), or refer to Windows Help for instructions on how to assign a drive letter to the Media Hub.

- **Subnet Mask** Enter the subnet mask of the Media Hub.
- **Gateway** Enter the IP address of the gateway.
- **DNS Server 1** Enter the IP address of the DNS server.
- **DNS Server 2** Enter the IP address of the backup DNS server.

Click **Submit** to save your changes, or click **Cancel** to cancel your changes.

**Change Password** You can change the login password for the web-based utility.

**Change** Click this option to change the password.

 A dialog box titled "Change Password" with three input fields: "Current Password:", "New Password:", and "Retype New Password:". Below the fields are "Submit" and "Cancel" buttons.

Change Password

- **Current Password** Enter the current password.
- **New Password** Enter the new password.
- **Retype New Password** Enter the new password again to confirm it.

Click **Submit** to save your change, or click **Cancel** to cancel your change.

**System Date** The current date and time of the Media Hub are displayed.

**Change** Click this option to change the date or time.



Change system date

Current Media Hub Date: Wed Nov 05 5:09:20 2008

Calendar: November 2008

Year: 2008

Month: 11

Day: 5

Hour: 5

Minute: 8

Buttons: Submit, Cancel

Change System Date

- **Current Media Hub Date** The current date and time are displayed.

There are two ways to change the date, calendar or drop-down menus.

- **Calendar** Use the arrow buttons to move to the correct month. Then select the correct day.
- **Year** Select the correct year.
- **Month** Select the correct month.
- **Day** Select the correct day.
- **Hour** Select the correct hour (displayed in 24-hour format).
- **Minute** Select the correct minute.

Click **Submit** to save your changes, or click **Cancel** to cancel your changes.

**Firmware Update: Latest Firmware Version** The latest available firmware version of the Media Hub is displayed.

**Update** Click this option to update the firmware.



**NOTE:** An active Internet connection is required.



Update Firmware

A new software update for the Media Hub is now available. It is recommended that you upgrade to the latest version. While updating the firmware, the system will be unavailable and will reboot when completed.

Click Update below to begin the firmware update.

Buttons: Update, Cancel

Update Firmware

The Media Hub will search for the latest version.

Click **Update** to begin the firmware update, or click **Cancel** to cancel the update.



**WARNING:** Do not reboot or power off the Media Hub during the firmware upgrade, which may take up to 15 minutes.

**Remote Reboot** If you want to reboot the Media Hub, click **Reboot**.



Reboot Device

Are you sure you wish to reboot the Media Hub?

Buttons: Yes, No

Confirm Reboot

Click **Yes** to reboot the Media Hub, or click **No** to cancel the reboot.

## Disk

Access the disk usage information and disk configuration settings, which will vary depending on the number of disks installed.



LINKSYS by Cisco

Overview System Disk Backup Devices Services

Disk Usage by Type

Wired: 34.0%	Used: 1.0%
Wireless: 0.0%	Free: 99.0%
Wireless: 10.0%	Total: 100.0%
Other: 5.0%	

Disk Usage by Type

Used: 1.0%	Free: 99.0%
Total: 100.0%	

Current Disk Configuration

Disk 1	WDC
Model	WDCWD10000-600000
Health	Passed
RAID MODE	Linear
RAID Status	OK
RAID	RAID0

Available Disk Configuration Actions

Click Configuration Help

Configuration Actions

- 1. Get help on increasing storage
- 2. Get help on increasing disk protection
- 3. Get help on adding or replacing disks
- 4. Revert to single disk mode

Help Increase Storage

Help Increase Disk Protection

Help Add/Replace a Disk

Revert to single disk mode

Disk (One Hard Disk Installed)





Disk (Two Hard Disks Installed)

## Disk Usage by Type

The percentages of the disk used by Music, Photos, Videos, and Other media are displayed.

## Disk Usage by Space

The amounts of used, available, and total disk space are displayed.

## Current Disk Configuration

### Disk 1/Disk 2 (if installed)

**Vendor** The manufacturer of the hard disk is displayed.

**Model** The model number of the hard disk is displayed.

**Health** The status of the hard disk is displayed.

**RAID Mode** The disk configuration mode is displayed. Linear 1 is the single disk mode. If two hard disks are installed, the options are Linear 2 (Increase Space) and RAID 1 (Increase Protection).

**RAID Status** The status of the disk configuration: OK, DEGRADED, or DEAD, is displayed.

**Slot A** Slot A is the drive bay on the left when you view the front panel of the Media Hub. If Disk 1 is installed, its status: OK, BAD, or NEW, is displayed. If Disk 1 is not installed, the status is EMPTY.

**Slot B** Slot B is the drive bay on the right when you view the front panel of the Media Hub. If Disk 2 is installed, its status: OK, BAD, or NEW, is displayed. If Disk 2 is not installed, the status is EMPTY.

## Available Disk Configuration Actions

If one disk is installed, then only the Revert to single disk option is available.

If two disks are installed, then two options for disk configuration, Increase Space and Increase Protection, are available. Increase Protection: RAID 1 helps protect data. Increase Storage: Linear 2 increases the amount of available storage. Linksys recommends Increase Protection: RAID 1 for most users. (To install a second hard disk, refer to [Install a Second Hard Disk, page 3.](#))

**? Disk Configuration Help** Click this option to access the following:

- **Overview** View general information about disk configuration.
- **Add/Replace Drive** Follow the instructions to add or replace a disk.
- **Configuration** View information about the available disk configuration options.
- **Recovery** Follow the instructions if a disk fails.



**NOTE:** Linksys does not support data recovery after hard disk failure.

**? Increase Space** (available only for two installed disks) To maximize storage space, click this option, also known as Linear 2 mode. Total capacity is equal to the capacity of the two hard disks. For more information, click the ? icon.

When prompted to confirm the new disk configuration, click **Yes** to continue, or click **No** to cancel.



**WARNING:** For the Increase Space: Linear 2 mode, if one of the two hard disks fails, then all data will be lost.

Before you click this option, review the following:

- The Media Hub is designed to maintain existing data during disk configuration; however, Linksys recommends that you back up its data to your computer or an external hard disk before you continue.
- When you set the Media Hub to the Increase Space: Linear 2 mode, the Media Hub will be unavailable for approximately 15 minutes and then automatically reboot.
- Do not manually reboot or power off the Media Hub during this time.
- After reboot, available disk space will increase to the total size of both hard disks.



**? Increase Protection** (available only for two installed disks) To help enhance data reliability, click this option, also known as RAID 1 mode. Disk 2 holds a copy of the data on Disk 1. For more information, click the ? icon.

When prompted to confirm the new disk configuration, click **Yes** to continue, or click **No** to cancel.



**NOTE:** For the Increase Protection: RAID 1 mode, Disk 2 must be equal to or larger in size than Disk 1. If one disk is smaller, only the smaller size will be used for this mode.

Before you click this option, review the following:



**WARNING:** Existing data on the Media Hub will be lost; Linksys strongly recommends that you back up its data to your computer or an external hard disk before you continue.

- When you set the Media Hub to the Increase Protection: RAID 1 mode, the Media Hub will be unavailable for approximately 15 minutes and then automatically reboot.
- After reboot, the Media Hub will synchronize the data on the two disks.
- Depending on disk size, disk synchronization may take from several minutes to several hours. Synchronization progress can be viewed from the *Disk* screen. Rebooting or removing power from the Media Hub during this time is not recommended.



**NOTE:** You may use the Media Hub during disk synchronization; however, it will perform at slower speeds.

- After configuration, available disk space will be the size of Disk 1, and your data will be more protected from damage or loss if a disk fails.

**? Revert to single disk mode** To reset the Media Hub to its factory default settings, click this option. All data on your hard disk will be deleted, and all configuration settings will be reset to their factory defaults. For more information, click the ? icon.

Before you click this option, review the following:

- If the Media Hub has two disks, Linksys recommends that you remove one of the disks before continuing.
- Existing data on the Media Hub will be lost; Linksys strongly recommends that you back up its data to your computer or an external hard disk before you continue.

- Depending on disk size, configuration may take from several minutes to several hours. Do not manually reboot or power off the Media Hub during this time.
- After configuration, available disk space will be the size of your single hard disk.

**Rebuild** This option appears only if two disks are installed and one disk is detected as “new”. To rebuild the Increase Protection: RAID 1 configuration, click this option.

Before you click this option, review the following:

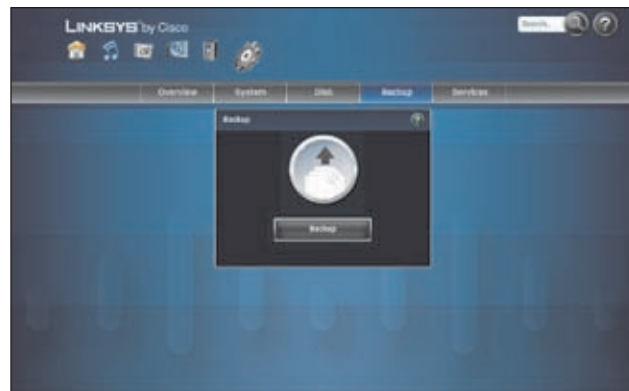
- Replace the defective disk (refer to **Replace a Hard Disk**, page 3).
- Depending on disk size, disk configuration may take from several minutes to several hours. Do not manually reboot or power off the Media Hub during this time. Rebuild progress can be viewed from the *Disk* screen.



**NOTE:** You may use the Media Hub during configuration; however, it may will perform at slower speeds.

## Backup

The Setup Wizard automatically installs a backup tool on your computer to run backup jobs (unless you choose not to install it); refer to **NTI Shadow**, page 29. If you have installed the backup tool, then you can use the backup feature of the Media Hub.



Backup

**Backup** Click **Backup** to initiate backup jobs specified by the backup software on your computer(s).



**NOTE:** Your computer(s) must be powered on for the jobs to run.

†Includes Remote Access service for one year from date of purchase. Fees may apply thereafter and are subject to change. Go to [www.linksysbycisco.com](http://www.linksysbycisco.com) for further information.

## Services

Configure the Remote Access, Windows File Sharing, Media Server, iTunes Server, and FTP Server settings.



Services

## Remote Access

Configure this feature to enable access of the Media Hub over the Internet. The status of the remote access feature and the Remote Device Name (if configured) are displayed.



**NOTE:** Linksys offers Remote Access service<sup>†</sup> through [www.ciscomediahub.com](http://www.ciscomediahub.com).

**Configure** Click this option to configure this feature.



Remote Access

- **Enable Remote Access to the Media Hub** To allow remote access of the Media Hub, select this option. (It is disabled by default.)

If you enable the remote access feature, then configure the Remote Device Name:

- **Remote Device Name** Enter the Remote Device Name you want to assign to the Media Hub. If the name is already taken, you will be prompted to enter a different name.



**NOTE:** You can change the Remote Device Name at any time; however, the Media Hub only supports a single Remote Device Name. If you save a new Remote Device Name, then you give up the old one.

Click **Submit** to save your changes, or click **Cancel** to cancel your changes.

## Remote Access Instructions

1. Open the web browser of the computer you are using.
2. In the *Address* field, enter this address: <http://www.ciscomediahub.com>

Press **Enter**.

3. Enter the Remote Device Name of the Media Hub, and then click **Go**.



**NOTE:** Depending on the web browser you are using, certificate or security warning screens may appear. To continue with the login process for remote access, accept the warnings. For more information, refer to [Appendix A: Troubleshooting, page 41](#).



Enter Remote Device Name

4. Enter the password you created during the Setup Wizard (the default is **admin**).

Click **Submit**.



Enter Password

## Windows File Sharing

The Media Hub uses the Windows File Sharing feature to share files with Windows computers. The status of this feature is displayed. By default, it is enabled.

**Disable** Click this option to disable this feature.

The shared folders are listed with the following information: Name, Description, Type, and Status.

## Media Server

The Media Server feature allows the Media Hub to index media files (like a library catalog or database). The status of this feature is displayed. By default, it is enabled.

If you have UPnP AV-enabled (or DLNA-certified) devices in your home, then you can use the Media Hub as a media server. Such devices include digital media adapters and other devices, such as a gaming console with a built-in media player or digital picture frame. For example, if you have a digital media adapter that sends content to your entertainment system, then the digital media adapter can locate the Media Hub using the UPnP AV standard. Media content on the Media Hub can then be accessed and played by the digital media adapter.

**Configure** Click this option to configure this feature.



Media Server

- **Find Shared Media on My Local Network** To find shared media files on your local network, select this option. The Media Hub scans its local content and any media content stored in UPnP AV-compatible servers connected to the local network. Indexing of media files on your computers is possible with Windows Media Player (WMP); however, it is not recommended. Instead, Linksys recommends that you copy media files on your computers to the Media Hub; refer to **Chapter 2: Getting Started, page 5** for more information.)

Click **Submit** to save your change, or click **Cancel** to cancel your change.

## iTunes Server

To support access by an iTunes library of music or video files, the Media Hub offers an iTunes feature. The status of this feature is displayed. By default, it is enabled.

**Disable** Click this option to disable this feature.

## FTP Server

To transfer files, the Media Hub can use File Transfer Protocol (FTP). The status of the FTP feature is displayed. By default, this feature is disabled.



**NOTE:** To use the FTP feature, you must enable port forwarding on your router. Configure the following options:

- **internal port number** port 21
- **IP address** IP address of the Media Hub

**Enable** Click this option to enable this feature.



**WEB:** For more information about the Media Hub, refer to the rest of the User Guide. You can also visit [www.linksysbycisco.com/support](http://www.linksysbycisco.com/support), and select the Media Hub.

## Appendix A: Troubleshooting

**The power LED of the Media Hub continuously flashes blue or red.**

Follow these instructions:

1. To shut down the Media Hub, press and hold the power button until the power LED starts flashing.  
If this step does not shut down the Media Hub, then proceed to step 2.
2. Disconnect the power adapter from the Power port of the Media Hub.
3. Disconnect the Ethernet network cable from the Ethernet port of the Media Hub.
4. Wait five seconds.
5. Re-connect the Ethernet network cable to the Ethernet port of the Media Hub.
6. Re-connect the power adapter to the Power port of the Media Hub.

**You cannot access the Media Browser of the Media Hub.**

Follow the instructions until you gain access to the Media Browser:

1. Make sure your computer is connected to the local network. Check the wireless or wired connection.
2. Make sure the Media Hub is connected to the router. Check the cable connection at both ends.
3. Double-click the desktop icon for the Media Hub (it was created during the Setup Wizard).
4. In the *Address* field of your web browser, make sure you entered the Friendly Name correctly.

The Friendly Name is the name you created during the Setup Wizard. If you did not create a Friendly Name, use the default name; enter **http://mediahub**.



**NOTE:** To access the Media Browser from a Mac, use one of the following:

- **http://<Friendly\_Name>.local**
- **<Friendly\_Name>.local**
- **http://<IP\_address\_of\_Media\_Hub>**

**You have configured the Media Hub, but you do not see it displayed in Windows Explorer.**

Change the Workgroup of the Media Hub to match the Workgroup of your computer. Follow these instructions:

1. Access the web-based utility of the Media Hub. (Refer to **Chapter 7: Advanced Configuration, page 33.**)
2. On the *Media Browser* screen, click **Configuration**.
3. Click **Configure System**.
4. For the Media Hub Name and Workgroup settings, click **Change**, and then follow the on-screen instructions.



**NOTE:** If you do not see a drive letter for the Media Hub, refer to **Drive Letter Not Found, page 7.**

**You cannot access the Media Browser, or the Media Hub does not respond to commands.**

### Before You Begin

The Media Hub must boot up with at least one hard disk installed. If Disk 1 has been removed and replaced with a new hard disk, then the recovery procedure can be used to re-install the Media Hub.



**WARNING:** Before you install the new hard disk, back up its existing data because all data on the new hard disk will be erased.

### Instructions for the Recovery Procedure

1. To shut down the Media Hub, press and hold the power button until the power LED starts flashing.  
If this step does not shut down the Media Hub, then proceed to step 2.
2. Disconnect the power adapter from the Power port of the Media Hub.
3. While you press and hold down the **Reset** button, re-connect the power adapter to the Power port of the Media Hub.
4. Continue to hold down the **Reset** button for ten seconds. Then release.
5. The Media Hub will undergo its recovery procedure.



**WARNING:** Do not reboot or power off the Media Hub during the recovery procedure.

The recovery procedure will reset the firmware to its factory version, so you may need to do a firmware upgrade when the recovery procedure is complete.

For remote access to the Media Hub, you entered its Remote Device Name at the Linksys-supported website, <http://www.ciscomediahub.com>, and a certificate or security warning screen appears.

Depending on the web browser you are using, certificate or security warning screens may appear. To continue with the login process for remote access, accept the warnings.

Specific instructions are provided for Internet Explorer 7.0, Internet Explorer 6.0, Firefox 3.0, and Firefox 2.0.

### Internet Explorer 7.0

1. On the *Security Certificate Warning* screen, click **Continue to this website**.



Security Certificate Warning

### Internet Explorer 6.0

1. On the *Security Alert* screen, click **Yes**.



Security Alert

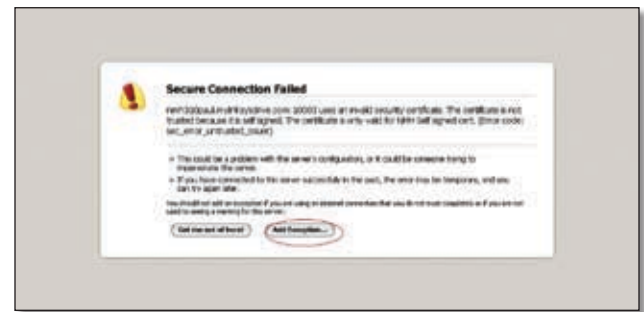
### Firefox 3.0

1. On the *Secure Connection Failed* screen, click **Or you can add an exception**.



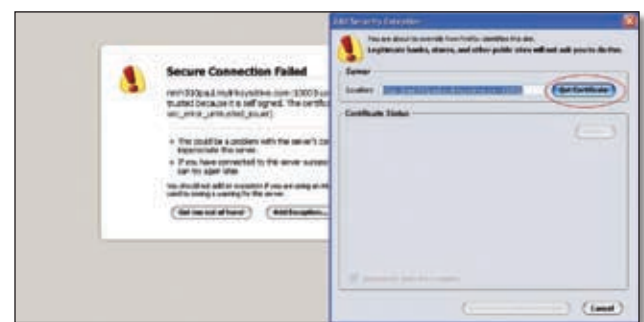
Secure Connection Failed

2. Click **Add Exception**.



Add Exception

3. Click **Get Certificate**.



Get Certificate

4. Click **Confirm Security Exception**.



Confirm Security Exception

### Firefox 2.0

1. On the *Website Certified by an Unknown Authority* screen, click **Accept this certificate temporarily for this session**. Then click **OK**.



Website Certified by an Unknown Authority



- Click **OK**.



Security Error: Domain Name Mismatch

*The Media Hub is using Increase Space: Linear 2 mode.*

*On the Media Hub with LCD (NMH400 Series), the LCD screen displays an alert indicating that one of the hard disks has failed.*

*On the Media Hub (NMH300 Series), one of the Disk LEDs is not lit.*



**NOTE:** Linksys does not support data recovery after hard disk failure.

### Before You Begin

Check which hard disk is defective. In the Current RAID Setting section of the *Disk* screen, the Slot A setting displays the status of the hard disk in Slot A, which is on the left when you view the front panel of the Media Hub. The Slot B setting displays the status of the hard disk in Slot B, which is on the right.

### Instructions

- To shut down the Media Hub, press and hold the power button until the power LED starts flashing.  
If this step does not shut down the Media Hub, then proceed to step 2.
- Disconnect the power adapter from the Power port.
- To release the drive bay cover, push the button on the top panel.
- To remove the defective disk, push together the clips of its drive bay, and then pull out the drive bay.
- Remove the defective disk from its drive bay.



**NOTE:** Do not install a replacement hard disk at this time. The Media Hub must revert to single disk mode before you can install a second hard disk.

- Push down on the hard disk to make sure the connectors are securely seated.
- Lower the cover, and push it down to secure it.
- Connect the power adapter to the Power port.

- Access the web-based utility of the Media Hub. (Refer to **Chapter 7: Advanced Configuration, page 33.**)
- On the *Media Browser* screen, click **Configuration**.
- Enter your password, and then click **Submit**.
- Click the **Disk** tab.
- Click **Revert to Single Disk Mode**.

Please wait until the Media Hub automatically reboots. Then the Media Hub will be ready for use.



**WARNING:** When a hard disk fails in Increase Protection: Linear 2 mode, not all data may be recovered.



**NOTE:** If you want to install a second hard disk, then refer to **Install a Second Hard Disk, page 3** for instructions.

*The Media Hub is using Increase Protection: RAID 1 mode. One of the hard disks has failed.*



**NOTE:** Linksys does not support data recovery after hard disk failure.

### Before You Begin

Check which hard disk is defective. In the Current RAID Setting section of the *Disk* screen, the Slot A setting displays the status of the hard disk in Slot A, which is on the left when you view the front panel of the Media Hub. The Slot B setting displays the status of the hard disk in Slot B, which is on the right.



**WARNING:** The replacement hard disk must be blank; otherwise, the Media Hub cannot use it.



**NOTE:** Although the Media Hub will work with only one disk, Linksys highly recommends that you replace the defective disk to ensure continued data protection.

### Instructions

- To shut down the Media Hub, press and hold the power button until the power LED starts flashing.  
If this step does not shut down the Media Hub, then proceed to step 2.
- Disconnect the power adapter from the Power port.
- To release the drive bay cover, push the button on the top panel.

4. To remove the defective disk, push together the clips of its drive bay, and then pull out the drive bay.
5. Remove the hard disk from its drive bay.
6. To install the replacement hard disk, make sure the screw holes of the hard disk line up with the screw holes of the drive bay.

Insert the hard disk into the drive bay.



**NOTE:** If you are installing a low-profile or half-height disk, use the four included screws to secure the hard disk in its bay.

7. With the hard disk's label facing the right side of the Media Hub, slide the drive bay back into its slot.
8. Push down on the hard disk to make sure the connectors are securely seated.
9. Lower the cover, and push it down to secure it.
10. Connect the power adapter to the Power port.
11. Access the web-based utility of the Media Hub. (Refer to **Chapter 7: Advanced Configuration, page 33.**)
12. On the *Media Browser* screen, click **Configuration**.
13. Enter your password, and then click **Submit**.
14. Click the **Disk** tab.
15. Click **Rebuild**.

Please wait until the Media Hub automatically reboots. Depending on disk size, disk configuration may take from several minutes to several hours. Do not manually reboot or power off the Media Hub during this time.



**NOTE:** You may use the Media Hub during configuration; however, it may perform at slower speeds.

#### ***You want to install a hard disk that was previously used in a Windows computer.***

The Media Hub requires a blank hard disk with no partitions.

#### **Before You Begin**

Before you remove the hard disk from the Windows computer, use the Windows Disk Management tool to delete its partitions. (Deleting a partition also deletes its data.)



**NOTE:** Your computer must support SATA hard disks; otherwise, this procedure will not work.

#### **Instructions**

1. Go to **Start > Settings > Control Panel**.

2. Double-click **Administrative Tools**.
3. Double-click **Computer Management**.
4. In the directory under Storage, click **Disk Management**.
5. Right-click the hard disk you want to remove. Then click **Delete Partition**.

For additional information, refer to Windows Help, and search for this phrase, "Delete Partition".

#### ***You initiated an on-demand backup job using the Media Hub and backup software, but the backup job did not run.***

Check the following:

- Your computer must be powered on for the job to run.
- Open your backup software. For the options of your backup job, make sure the "On Demand" option is selected. For more information, refer to **Create Backup Job, page 29**.

#### ***You ran a backup job using the Media Hub and backup software, but you cannot find the backup files on the Media Hub.***

- Open your backup software. For the options of your backup job, make sure the Media Hub is the backup destination (the backup folder of the Media Hub is recommended). For more information, refer to **Create Backup Job, page 29**.

#### ***The Media Hub does not recognize your USB storage device.***

The USB storage may not have been properly removed from its previous device. Follow these instructions:

1. Disconnect the USB storage device from the Media Hub.
2. Connect the USB storage device to your computer.
3. Go through the USB safe removal process for your computer.
4. Re-connect the USB storage device to the Media Hub.



**WEB:** If your questions are not addressed here, refer to the Linksys website, [www.linksysbycisco.com](http://www.linksysbycisco.com)

## Appendix B: Specifications

### Model NMH305 - Media Hub

Standards	IEEE 802.3, IEEE 802.3u, IEEE 802.3ab
Ports	One Power, One Gigabit Ethernet (10/100/1000), Two USB 2.0
Buttons	One Backup, One Reset One Power
LEDs	One Power, Two Disk
Drive Bays	2 SATA
Certification	DLNA 1.5
Cabling Type	UTP CAT5E or Better
UPnP able/cert	Discovery, AV
Security Features	Password for System Administration and Remote Access
Available Storage	500 GB

#### Environmental

Dimensions	7.80" x 4.37" x 6.61" (198 x 111 x 168 mm)
Weight	4.50 lb (2.04 kg)
Power	External 12V/5A
Certification	FCC, CE, UL
Operating Temp.	32 to 95°F (0 to 35°C)
Storage Temp.	-13 to 158°F (-25 to 70°C)
Operating Humidity	10 to 90%, Noncondensing
Storage Humidity	5 to 95%, Noncondensing

### Model NMH405 - Media Hub with LCD

Standards	IEEE 802.3, IEEE 802.3u, IEEE 802.3ab
Ports	One Power, One Gigabit Ethernet (10/100/1000), Two USB 2.0
Buttons	Five Navigation, One Reset, One Power
LCD	One 1.8", 176 x 220, 64K Colors
LED	One Power
Drive Bays	2 SATA
Certification	DLNA 1.5
Cabling Type	UTP CAT5E or Better

UPnP able/cert	Discovery, AV
Security Features	Password for System Administration and Remote Access
Available Storage	500 GB
<b>Environmental</b>	
Dimensions	7.80" x 4.37" x 6.61" (198 x 111 x 168 mm)
Weight	4.61 lb (2.09 kg)
Power	External 12V/5A
Certification	FCC, CE, UL
Operating Temp.	32 to 95°F (0 to 35°C)
Storage Temp.	-13 to 158°F (-25 to 70°C)
Operating Humidity	10 to 90%, Noncondensing
Storage Humidity	5 to 95%, Noncondensing

### Model NMH410 - Media Hub with LCD

Standards	IEEE 802.3, IEEE 802.3u, IEEE 802.3ab
Ports	One Power, One Gigabit Ethernet (10/100/1000), Two USB 2.0
Buttons	Five Navigation, One Reset, One Power
LCD	One 1.8", 176 x 220, 64K Colors
LED	One Power
Drive Bays	2 SATA
Certification	DLNA 1.5
Cabling Type	UTP CAT5E or Better
UPnP able/cert	Discovery, AV
Security Features	Password for System Administration and Remote Access
Available Storage	1 TB

#### Environmental

Dimensions	7.80" x 4.37" x 6.61" (198 x 111 x 168 mm)
Weight	4.65 lb (2.11 kg)
Power	External 12V/5A
Certification	FCC, CE, UL
Operating Temp.	32 to 95°F (0 to 35°C)
Storage Temp.	-13 to 158°F (-25 to 70°C)
Operating Humidity	10 to 90%, Noncondensing
Storage Humidity	5 to 95%, Noncondensing

Specifications are subject to change without notice.

## Appendix C: Warranty Information

### Limited Warranty

Linksys warrants this Linksys hardware product against defects in materials and workmanship under normal use for the Warranty Period, which begins on the date of purchase by the original end-user purchaser and lasts for the period specified below:

- One (1) year for new product
- Ninety (90) days for refurbished product

This limited warranty is non-transferable and extends only to the original end-user purchaser. Your exclusive remedy and Linksys' entire liability under this limited warranty will be for Linksys, at its option, to (a) repair the product with new or refurbished parts, (b) replace the product with a reasonably available equivalent new or refurbished Linksys product, or (c) refund the purchase price of the product less any rebates. Any repaired or replacement products will be warranted for the remainder of the original Warranty Period or thirty (30) days, whichever is longer. All products and parts that are replaced become the property of Linksys.

### Exclusions and Limitations

This limited warranty does not apply if: (a) the product assembly seal has been removed or damaged, (b) the product has been altered or modified, except by Linksys, (c) the product damage was caused by use with non-Linksys products, (d) the product has not been installed, operated, repaired, or maintained in accordance with instructions supplied by Linksys, (e) the product has been subjected to abnormal physical or electrical stress, misuse, negligence, or accident, (f) the serial number on the Product has been altered, defaced, or removed, or (g) the product is supplied or licensed for beta, evaluation, testing or demonstration purposes for which Linksys does not charge a purchase price or license fee.

ALL SOFTWARE PROVIDED BY LINKSYS WITH THE PRODUCT, WHETHER FACTORY LOADED ON THE PRODUCT OR CONTAINED ON MEDIA ACCOMPANYING THE PRODUCT, IS PROVIDED "AS IS" WITHOUT WARRANTY OF ANY KIND. Without limiting the foregoing, Linksys does not warrant that the operation of the product or software will be uninterrupted or error free. Also, due to the continual development of new techniques for intruding upon and attacking networks, Linksys does not warrant that the product, software or any equipment, system or network on which the product or software is used will be free of vulnerability to intrusion or attack. The product may include or be bundled with third party software or

service offerings. This limited warranty shall not apply to such third party software or service offerings. This limited warranty does not guarantee any continued availability of a third party's service for which this product's use or operation may require.

TO THE EXTENT NOT PROHIBITED BY LAW, ALL IMPLIED WARRANTIES AND CONDITIONS OF MERCHANTABILITY, SATISFACTORY QUALITY OR FITNESS FOR A PARTICULAR PURPOSE ARE LIMITED TO THE DURATION OF THE WARRANTY PERIOD. ALL OTHER EXPRESS OR IMPLIED CONDITIONS, REPRESENTATIONS AND WARRANTIES, INCLUDING, BUT NOT LIMITED TO, ANY IMPLIED WARRANTY OF NON-INFRINGEMENT, ARE DISCLAIMED. Some jurisdictions do not allow limitations on how long an implied warranty lasts, so the above limitation may not apply to you. This limited warranty gives you specific legal rights, and you may also have other rights which vary by jurisdiction.

TO THE EXTENT NOT PROHIBITED BY LAW, IN NO EVENT WILL LINKSYS BE LIABLE FOR ANY LOST DATA, REVENUE OR PROFIT, OR FOR SPECIAL, INDIRECT, CONSEQUENTIAL, INCIDENTAL OR PUNITIVE DAMAGES, REGARDLESS OF THE THEORY OF LIABILITY (INCLUDING NEGLIGENCE), ARISING OUT OF OR RELATED TO THE USE OF OR INABILITY TO USE THE PRODUCT (INCLUDING ANY SOFTWARE), EVEN IF LINKSYS HAS BEEN ADVISED OF THE POSSIBILITY OF SUCH DAMAGES. IN NO EVENT WILL LINKSYS' LIABILITY EXCEED THE AMOUNT PAID BY YOU FOR THE PRODUCT. The foregoing limitations will apply even if any warranty or remedy provided under this limited warranty fails of its essential purpose. Some jurisdictions do not allow the exclusion or limitation of incidental or consequential damages, so the above limitation or exclusion may not apply to you.

### Obtaining Warranty Service

If you have a question about your product or experience a problem with it, please go to [www.linksysbycisco.com/support](http://www.linksysbycisco.com/support) where you will find a variety of online support tools and information to assist you with your product. If the product proves defective during the Warranty Period, contact Linksys Technical Support for instructions on how to obtain warranty service. The telephone number for Linksys Technical Support in your area can be found in the product User Guide and at [www.linksysbycisco.com](http://www.linksysbycisco.com). Have your product serial number and proof of purchase on hand when calling. A DATED PROOF OF ORIGINAL PURCHASE IS REQUIRED TO PROCESS WARRANTY CLAIMS. If you are requested to return your product, you will be given a Return Materials Authorization (RMA) number. You are responsible for properly packaging and shipping your product to Linksys at your cost and risk. You must include the RMA number and a copy of your dated proof of original purchase when returning your product. Products received without a RMA number and dated proof of

original purchase will be rejected. Do not include any other items with the product you are returning to Linksys. Defective product covered by this limited warranty will be repaired or replaced and returned to you without charge. Customers outside of the United States of America and Canada are responsible for all shipping and handling charges, custom duties, VAT and other associated taxes and charges. Repairs or replacements not covered under this limited warranty will be subject to charge at Linksys' then-current rates.

### Technical Support

This limited warranty is neither a service nor a support contract. Information about Linksys' current technical support offerings and policies (including any fees for support services) can be found at:

**[www.linksysbycisco.com/support](http://www.linksysbycisco.com/support)**.

This limited warranty is governed by the laws of the jurisdiction in which the Product was purchased by you.

Please direct all inquiries to: Linksys, P.O. Box 18558, Irvine, CA 92623.



## Appendix D: Regulatory Information

### FCC Statement

This product has been tested and complies with the specifications for a Class B digital device, pursuant to Part 15 of the FCC Rules. These limits are designed to provide reasonable protection against harmful interference in a residential installation. This equipment generates, uses, and can radiate radio frequency energy and, if not installed and used according to the instructions, may cause harmful interference to radio communications. However, there is no guarantee that interference will not occur in a particular installation. If this equipment does cause harmful interference to radio or television reception, which is found by turning the equipment off and on, the user is encouraged to try to correct the interference by one or more of the following measures:

- Reorient or relocate the receiving antenna
- Increase the separation between the equipment or devices
- Connect the equipment to an outlet other than the receiver's
- Consult a dealer or an experienced radio/TV technician for assistance

### Safety Notices

- Caution: To reduce the risk of fire, use only No.26 AWG or larger telecommunication line cord.
- Do not use this product near water, for example, in a wet basement or near a swimming pool.
- Avoid using this product during an electrical storm. There may be a remote risk of electric shock from lightning.



**WARNING:** This product contains lead, known to the State of California to cause cancer, and birth defects or other reproductive harm. Wash hands after handling.



**WARNING:** Primary Lithium Coin Battery - California USE Only

This Perchlorate warning applies only to primary CR (Manganese Dioxide) Lithium coin cells sold or distributed ONLY in California, USA

"Perchlorate Material-special handling may apply. See [www.dtsc.ca.gov/hazardouswaste/perchlorate](http://www.dtsc.ca.gov/hazardouswaste/perchlorate)"

### Industry Canada Statement

This Class B digital apparatus complies with Canadian ICES-003.

Operation is subject to the following two conditions:

1. This device may not cause interference and
2. This device must accept any interference, including interference that may cause undesired operation of the device.

### Avis d'Industrie Canada

Cet appareil numérique de la classe B est conforme à la norme NMB-003 du Canada.

Le fonctionnement est soumis aux conditions suivantes :


1. Ce périphérique ne doit pas causer d'interférences;
2. Ce périphérique doit accepter toutes les interférences reçues, y compris celles qui risquent d'entraîner un fonctionnement indésirable.

## User Information for Consumer Products Covered by EU Directive 2002/96/EC on Waste Electric and Electronic Equipment (WEEE)


This document contains important information for users with regards to the proper disposal and recycling of Linksys products. Consumers are required to comply with this notice for all electronic products bearing the following symbol:




### English - Environmental Information for Customers in the European Union

European Directive 2002/96/EC requires that the equipment bearing this symbol  on the product and/or its packaging must not be disposed of with unsorted municipal waste. The symbol indicates that this product should be disposed of separately from regular household waste streams. It is your responsibility to dispose of this and other electric and electronic equipment via designated collection facilities appointed by the government or local authorities. Correct disposal and recycling will help prevent potential negative consequences to the environment and human health. For more detailed information about the disposal of your old equipment, please contact your local authorities, waste disposal service, or the shop where you purchased the product.


### Български (Bulgarian) - Информация относно опазването на околната среда за потребители в Европейския съюз

Европейска директива 2002/96/EC изисква уредите, носещи този символ  върху изделието и/или опаковката му, да не се изхвърлят с несортирани битови отпадъци. Символът обозначава, че изделието трябва да се изхвърля отделно от сметосъбирането на обикновените битови отпадъци. Ваша е отговорността този и другите електрически и електронни уреди да се изхвърлят в предварително определени от държавните или общински органи специализирани пунктове за събиране. Правилното изхвърляне и рециклиране ще спомогнат да се предотвратят евентуални вредни за околната среда и здравето на населението последствия. За по-подробна информация относно изхвърлянето на вашите стари уреди се обърнете към местните власти, службите за сметосъбиране или магазина, от който сте закупили уреда.


### Čeština (Czech) - Informace o ochraně životního prostředí pro zákazníky v zemích Evropské unie

Evropská směrnice 2002/96/ES zakazuje, aby zařízení označené tímto symbolem  na produktu anebo na obalu bylo likvidováno s netříděným komunálním odpadem. Tento symbol udává, že daný produkt musí být likvidován odděleně od běžného komunálního odpadu. Odpovídáte za likvidaci tohoto produktu a dalších elektrických a elektronických zařízení prostřednictvím určených sběrných míst stanovených vládou nebo místními úřady. Správná likvidace a recyklace pomáhá předcházet potenciálním negativním dopadům na životní prostředí a lidské zdraví. Podrobnější informace o likvidaci starého vybavení si laskavě vyžádejte od místních úřadů, podniku zabývajícího se likvidací komunálních odpadů nebo obchodu, kde jste produkt zakoupili.


### Dansk (Danish) - Miljøinformation for kunder i EU

EU-direktiv 2002/96/EF kræver, at udstyr der bærer dette symbol  på produktet og/eller emballagen ikke må bortskaffes som usorteret kommunalt affald. Symbolet betyder, at dette produkt skal bortskaffes adskilt fra det almindelige husholdningsaffald. Det er dit ansvar at bortskaffe dette og andet elektrisk og elektronisk udstyr via bestemte indsamlingssteder udpeget af staten eller de lokale myndigheder. Korrekt bortskaffelse og genvinding vil hjælpe med til at undgå mulige skader for miljøet og menneskers sundhed. Kontakt venligst de lokale myndigheder, renovationstjenesten eller den butik, hvor du har købt produktet, angående mere detaljeret information om bortskaffelse af dit gamle udstyr.


### Deutsch (German) - Umweltinformation für Kunden innerhalb der Europäischen Union

Die Europäische Richtlinie 2002/96/EC verlangt, dass technische Ausrüstung, die direkt am Gerät und/oder an der Verpackung mit diesem Symbol versehen ist , nicht zusammen mit unsortiertem Gemeindeabfall entsorgt werden darf. Das Symbol weist darauf hin, dass das Produkt von regulärem Hausaltmüll getrennt entsorgt werden sollte. Es liegt in Ihrer Verantwortung, dieses Gerät und andere elektrische und elektronische Geräte über die dafür zuständigen und von der Regierung oder örtlichen Behörden dazu bestimmten Sammelstellen zu entsorgen. Ordnungsgemäßes Entsorgen und Recyceln trägt dazu bei, potentielle negative Folgen für Umwelt und die menschliche Gesundheit zu vermeiden. Wenn Sie weitere Informationen zur Entsorgung Ihrer Altgeräte benötigen, wenden Sie sich bitte an die örtlichen Behörden oder städtischen Entsorgungsdienste oder an den Händler, bei dem Sie das Produkt erworben haben.

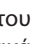
### Eesti (Estonian) - Keskkonnaalane informatsioon Euroopa Liidus asuvatele klientidele

Euroopa Liidu direktiivi 2002/96/EÜ nõuete kohaselt on seadmeid, millel on tootel või pakendil käesolev sümbol , keelatud kõrvaldada koos sorteerimata olmejäätmetega. See sümbol näitab, et toode tuleks kõrvaldada eraldi tavalistest olmejäätmevoogudest. Olete kohustatud kõrvaldama käesoleva ja ka muud elektri- ja elektroonikaseadmed riigi või kohalike ametiasutuste poolt ette nähtud kogumispunktide kaudu. Seadmete korrektne kõrvaldamine ja ringlussevõtt aitab vältida võimalikke negatiivseid tagajärgi keskkonnale ning inimeste tervisele. Vanade seadmete kõrvaldamise kohta täpsema informatsiooni saamiseks võtke palun ühendust kohalike ametiasutustega, jäätmekäitlusfirmaga või kauplusega, kust te toote ostsite.

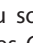
### Español (Spanish) - Información medioambiental para clientes de la Unión Europea

La Directiva 2002/96/CE de la UE exige que los equipos que lleven este símbolo , en el propio aparato y/o en su embalaje no deben eliminarse junto con otros residuos urbanos no seleccionados. El símbolo indica que el producto en cuestión debe separarse de los residuos domésticos convencionales con vistas a su eliminación. Es responsabilidad suya desechar este y cualesquiera otros aparatos eléctricos y electrónicos a través de los puntos de recogida que ponen a su disposición el gobierno y las autoridades locales. Al desechar y reciclar correctamente estos aparatos estará contribuyendo a evitar posibles consecuencias negativas para el medio ambiente y la salud de las personas. Si desea obtener información más detallada sobre la eliminación segura de su aparato usado, consulte a las autoridades locales, al servicio de recogida y eliminación de residuos de su zona o pregunte en la tienda donde adquirió el producto.

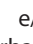
### Ελληνικά (Greek) - Στοιχεία περιβαλλοντικής προστασίας για πελάτες εντός της Ευρωπαϊκής Ένωσης

Σύμφωνα με την Κοινοτική Οδηγία 2002/96/ΕΚ, ο εξοπλισμός που φέρει αυτό το σύμβολο , στο προϊόν ή/και τη συσκευασία του δεν πρέπει να απορρίπτεται μαζί με τα μη διαχωρισμένα αστικά απορρίμματα. Το σύμβολο υποδεικνύει ότι αυτό το προϊόν θα πρέπει να απορρίπτεται ξεχωριστά από τα συνήθη οικιακά απορρίμματα. Είστε υπεύθυνος για την απόρριψη του παρόντος και άλλου ηλεκτρικού και ηλεκτρονικού εξοπλισμού μέσω των καθορισμένων εγκαταστάσεων συγκέντρωσης απορριμμάτων, οι οποίες ορίζονται από το κράτος ή τις αρμόδιες τοπικές αρχές. Η σωστή απόρριψη και ανακύκλωση συμβάλλει στην πρόληψη ενδεχόμενων αρνητικών επιπτώσεων στο περιβάλλον και την υγεία. Για περισσότερες πληροφορίες σχετικά με την απόρριψη του παλαιού σας εξοπλισμού, επικοινωνήστε με τις τοπικές αρχές, τις υπηρεσίες αποκομιδής απορριμμάτων ή το κατάστημα από το οποίο αγοράσατε το προϊόν.


### Français (French) - Informations environnementales pour les clients de l'Union européenne

La directive européenne 2002/96/CE exige que l'équipement sur lequel est apposé ce symbole , sur le produit et/ou son emballage ne soit pas jeté avec les autres ordures ménagères. Ce symbole indique que le produit doit être éliminé dans un circuit distinct de celui pour les déchets des ménages. Il est de votre responsabilité de jeter ce matériel ainsi que tout autre matériel électrique ou électronique par les moyens de collecte indiqués par le gouvernement et les pouvoirs publics des collectivités territoriales. L'élimination et le recyclage en bonne et due forme ont pour but de lutter contre l'impact néfaste potentiel de ce type de produits sur l'environnement et la santé publique. Pour plus d'informations sur le mode d'élimination de votre ancien équipement, veuillez prendre contact avec les pouvoirs publics locaux, le service de traitement des déchets, ou l'endroit où vous avez acheté le produit.


### Italiano (Italian) - Informazioni relative all'ambiente per i clienti residenti nell'Unione Europea

La direttiva europea 2002/96/EC richiede che le apparecchiature contrassegnate con questo simbolo , sul prodotto e/o sull'imballaggio non siano smaltite insieme ai rifiuti urbani non differenziati. Il simbolo indica che questo prodotto non deve essere smaltito insieme ai normali rifiuti domestici. È responsabilità del proprietario smaltire sia questi prodotti sia le altre apparecchiature elettriche ed elettroniche mediante le specifiche strutture di raccolta indicate dal governo o dagli enti pubblici locali. Il corretto smaltimento ed il riciclaggio aiuteranno a prevenire conseguenze potenzialmente negative per l'ambiente e per la salute dell'essere umano. Per ricevere informazioni più dettagliate circa lo smaltimento delle vecchie apparecchiature in Vostro possesso, Vi invitiamo a contattare gli enti pubblici di competenza, il servizio di smaltimento rifiuti o il negozio nel quale avete acquistato il prodotto.


### Latviešu valoda (Latvian) - Ekoloģiska informācija klientiem Eiropas Savienības jurisdikcijā

Direktīvā 2002/96/EK ir prasība, ka aprīkojumu, kam pievienota zīme , uz paša izstrādājuma vai uz tā iesaiņojuma, nedrīkst izmest nešķīrotā veidā kopā ar komunālajiem atkritumiem (tiem, ko rada vietēji iedzīvotāji un uzņēmumi). Šī zīme nozīmē to, ka šī ierīce ir jāizmet atkritumos tā, lai tā nenonāktu kopā ar parastiem mājāsaimniecības atkritumiem. Jūsu pienākums ir šo un citas elektriskas un elektroniskas ierīces izmest atkritumos, izmantojot īpašus atkritumu savākšanas veidus un līdzekļus, ko nodrošina valsts un pašvaldību iestādes. Ja izmešana atkritumos un pārstrāde tiek veikta pareizi, tad mazinās iespējamais kaitējums dabai un cilvēku veselībai. Sikākas ziņas par novecojuša aprīkojuma izmešanu atkritumos jūs varat saņemt vietējā pašvaldībā, atkritumu savākšanas dienestā, kā arī veikalā, kur iegādājāties šo izstrādājumu.


### Lietuvškai (Lithuanian) - Aplinkosaugos informacija, skirta Europos Sąjungos vartotojams

Europos direktyva 2002/96/EC numato, kad įrangos, kuri ir , kurios pakuotė yra pažymėta šiuo simboliu (įveskite simbolį), negalima šalinti kartu su nerūšiuotomis komunalinėmis atliekomis. Šis simbolis rodo, kad gaminį reikia šalinti atskirai nuo bendro buitinių atliekų srauto. Jūs privalote užtikrinti, kad ši ir kita elektros ar elektroninė įranga būtų šalinama per tam tikras nacionalinės ar vietinės valdžios nustatytas atliekų rinkimo sistemas. Tinkamai šalinant ir perdurbant atliekas, bus išvengta galimos žalos aplinkai ir žmonių sveikatai. Daugiau informacijos apie jūsų senos įrangos šalinimą gali pateikti vietinės valdžios institucijos, atliekų šalinimo tarnybos arba parduotuvės, kuriose įsigijote tą gaminį.

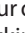
### Malti (Maltese) - Informazzjoni Ambjentali għal Kliġenti fl-Unjoni Ewropea

Id-Direttiva Ewropea 2002/96/KE titlob li t-tagħmir li jkun fih is-simbolu , fuq il-prodott u/jew fuq l-ippakkjar ma jistax jintrema ma' skart municipali li ma giex isseparat. Is-simbolu jindika li dan il-prodott għandu jintrema separatament minn ma' l-iskart domestiku regolari. Hija responsabbiltà tiegħek li tarmi dan it-tagħmir u kull tagħmir ieħor ta' l-elettriku u elettroniku permezz ta' faċilitajiet ta' għbir appuntati apposta mill-gvern jew mill-awtoritajiet lokali. Ir-rimi b'mod korrett u r-riċiklaġġ jgħin jipprevjeni konsegwenzi negattivi potenzjali għall-ambjent u għas-saħħa tal-bniedem. Għal aktar informazzjoni dettaljata dwar ir-rimi tat-tagħmir antik tiegħek, jekk jogħġbok ikkuntattja lill-awtoritajiet lokali tiegħek, is-servizzi għar-rimi ta' l-iskart, jew il-ħanut minn fejn xtrajt il-prodott.


### Magyar (Hungarian) - Környezetvédelmi információ az európai uniós vásárlók számára

A 2002/96/EC számú európai uniós irányelv megkívánja, hogy azokat a termékeket, amelyeken, és/vagy amelyek csomagolásán az alábbi címke , megjelenik, tilos a többi szelektálatlan lakossági hulladékkal együtt kidobni. A címke azt jelöli, hogy az adott termék kidobásakor a szokványos háztartási hulladékelszállítási rendszerektől elkülönített eljárást kell alkalmazni. Az Ön felelőssége, hogy ezt, és más elektromos és elektronikus berendezéseit a kormányzati vagy a helyi hatóságok által kijelölt gyűjtőredszereken keresztül számolja fel. A megfelelő hulladékfeldolgozás segít a környezetre és az emberi egészségre potenciálisan ártalmas negatív hatások megelőzésében. Ha elavult berendezéseinek felszámolásához további részletes információra van szüksége, kérjük, lépjen kapcsolatba a helyi hatóságokkal, a hulladékfeldolgozási szolgálattal, vagy azzal üzlettel, ahol a terméket vásárolta.


### Nederlands (Dutch) - Milieu-informatie voor klanten in de Europese Unie

De Europese Richtlijn 2002/96/EC schrijft voor dat apparatuur die is voorzien van dit symbool  op het product of de verpakking, niet mag worden ingezameld met niet-gescheiden huishoudelijk afval. Dit symbool geeft aan dat het product apart moet worden ingezameld. U bent zelf verantwoordelijk voor de vernietiging van deze en andere elektrische en elektronische apparatuur via de daarvoor door de landelijke of plaatselijke overheid aangewezen inzamelingskanalen. De juiste vernietiging en recycling van deze apparatuur voorkomt mogelijke negatieve gevolgen voor het milieu en de gezondheid. Voor meer informatie over het vernietigen van uw oude apparatuur neemt u contact op met de plaatselijke autoriteiten of afvalverwerkingsdienst, of met de winkel waar u het product hebt aangeschaft.


### Norsk (Norwegian) - Miljøinformasjon for kunder i EU

EU-direktiv 2002/96/EF krever at utstyr med følgende symbol  avbildet på produktet og/eller pakningen, ikke må kastes sammen med usortert avfall. Symbolet indikerer at dette produktet skal håndteres atskilt fra ordinær avfallsinnsamling for husholdningsavfall. Det er ditt ansvar å kvitte deg med dette produktet og annet elektrisk og elektronisk avfall via egne innsamlingsordninger slik myndighetene eller kommunene bestemmer. Korrekt avfallshåndtering og gjenvinning vil være med på å forhindre mulige negative konsekvenser for miljø og helse. For nærmere informasjon om håndtering av det kasserte utstyret ditt, kan du ta kontakt med kommunen, en innsamlingsstasjon for avfall eller butikken der du kjøpte produktet.


### Polski (Polish) - Informacja dla klientów w Unii Europejskiej o przepisach dotyczących ochrony środowiska

Dyrektywa Europejska 2002/96/EC wymaga, aby sprzęt oznaczony symbolem  znajdującym się na produkcie i/lub jego opakowaniu nie był wyrzucany razem z innymi niesortowanymi odpadami komunalnymi. Symbol ten wskazuje, że produkt nie powinien być usuwany razem ze zwykłymi odpadami z gospodarstw domowych. Na Państwu spoczywa obowiązek wyrzucania tego i innych urządzeń elektrycznych oraz elektronicznych w punktach odbioru wyznaczonych przez władze krajowe lub lokalne. Pozbywanie się sprzętu we właściwy sposób i jego recykling pomogą zapobiec potencjalnie negatywnym konsekwencjom dla środowiska i zdrowia ludzkiego. W celu uzyskania szczegółowych informacji o usuwaniu starego sprzętu, prosimy zwrócić się do lokalnych władz, służb oczyszczania miasta lub sklepu, w którym produkt został nabyty.

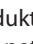
### Português (Portuguese) - Informação ambiental para clientes da União Europeia

A Directiva Europeia 2002/96/CE exige que o equipamento que exibe este símbolo  no produto e/ou na sua embalagem não seja eliminado junto com os resíduos municipais não separados. O símbolo indica que este produto deve ser eliminado separadamente dos resíduos domésticos regulares. É da sua responsabilidade eliminar este e qualquer outro equipamento eléctrico e electrónico através das instalações de recolha designadas pelas autoridades governamentais ou locais. A eliminação e reciclagem correctas ajudarão a prevenir as consequências negativas para o ambiente e para a saúde humana. Para obter informações mais detalhadas sobre a forma de eliminar o seu equipamento antigo, contacte as autoridades locais, os serviços de eliminação de resíduos ou o estabelecimento comercial onde adquiriu o produto.

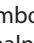
### Română (Romanian) - Informații de mediu pentru clienții din Uniunea Europeană

Directiva europeană 2002/96/CE impune ca echipamentele care prezintă acest simbol  pe produs și/sau pe ambalajul acestuia să nu fie casate împreună cu gunoiul menajer municipal. Simbolul indică faptul că acest produs trebuie să fie casat separat de gunoiul menajer obișnuit. Este responsabilitatea dvs. să cașati acest produs și alte echipamente electrice și electronice prin intermediul unităților de colectare special desemnate de guvern sau de autoritățile locale. Casarea și reciclarea corecte vor ajuta la prevenirea potențialelor consecințe negative asupra sănătății mediului și a oamenilor. Pentru mai multe informații detaliate cu privire la casarea acestui echipament vechi, contactați autoritățile locale, serviciul de salubritate sau magazinul de la care ați achiziționat produsul.


### Slovenčina (Slovak) - Informácie o ochrane životného prostredia pre zákazníkov v Európskej únii

Podľa európskej smernice 2002/96/ES zariadenie s týmto symbolom  na produkte a/alebo jeho balení nesmie byť likvidované spolu s netriedeným komunálnym odpadom. Symbol znamená, že produkt by sa mal likvidovať oddelene od bežného odpadu z domácností. Je vašou povinnosťou likvidovať toto i ostatné elektrické a elektronické zariadenia prostredníctvom špecializovaných zberných zariadení určených vládou alebo miestnymi orgánmi. Správna likvidácia a recyklácia pomôže zabrániť prípadným negatívnym dopadom na životné prostredie a zdravie ľudí. Ak máte záujem o podrobnejšie informácie o likvidácii starého zariadenia, obráťte sa, prosím, na miestne orgány, organizácie zaoberajúce sa likvidáciou odpadov alebo obchod, v ktorom ste si produkt zakúpili.

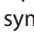
### Slovenščina (Slovene) - Okoljske informacije za stranke v Evropski uniji

Evropska direktiva 2002/96/ES prepoveduje odlaganje opreme s tem simbolom  – na izdelku in/ali na embalaži z nesortiranimi komunalnimi odpadki. Ta simbol opozarja, da je treba izdelek zavreči ločeno od preostalih gospodinjskih odpadkov. Vaša odgovornost je, da to in preostalo električno in elektronsko opremo oddate na posebna zbirališča, ki jih določijo državne ustanove ali lokalne oblasti. S pravilnim odlaganjem in recikliranjem boste preprečili morebitne škodljive vplive na okolje in zdravje ljudi. Če želite izvedeti več o odlaganju stare opreme, se obrnite na lokalne oblasti, odlagališče odpadkov ali trgovino, kjer ste izdelek kupili.

### Suomi (Finnish) - Ympäristöä koskevia tietoja EU-alueen asiakkaille

EU-direktiivi 2002/96/EY edellyttää, että jos laitteistossa on tämä symboli  itse tuotteessa ja/tai sen pakkauksessa, laitteistoa ei saa hävittää lajittelemattoman yhdyskuntajätteen mukana. Symboli merkitsee sitä, että tämä tuote on hävitettävä erillään tavallisesta kotitalousjätteestä. Sinun vastuullasi on hävittää tämä elektroniikkatuote ja muut vastaavat elektroniikkatuotteet viemällä tuote tai tuotteet viranomaisten määräämään keräyspisteeseen. Laitteiston oikea hävittäminen estää mahdolliset kielteiset vaikutukset ympäristöön ja ihmisten terveyteen. Lisätietoja vanhan laitteiston oikeasta hävitystavasta saa paikallisilta viranomaisilta, jätteenhävityspalvelusta tai siitä myymälästä, josta ostit tuotteen.

### Svenska (Swedish) - Miljöinformation för kunder i Europeiska unionen

Det europeiska direktivet 2002/96/EC kräver att utrustning med denna symbol  på produkten och/eller förpackningen inte får kastas med osorterat kommunalt avfall. Symbolen visar att denna produkt bör kastas efter att den avskiljts från vanligt hushållsavfall. Det faller på ditt ansvar att kasta denna och annan elektrisk och elektronisk utrustning på fastställda samlingsplatser utsedda av regeringen eller lokala myndigheter. Korrekt kassering och återvinning skyddar mot eventuella negativa konsekvenser för miljön och personhälsa. För mer detaljerad information om kassering av din gamla utrustning kontaktar du dina lokala myndigheter, avfallshantering eller butiken där du köpte produkten.



**WEB:** For additional information, please visit [www.linksysbycisco.com](http://www.linksysbycisco.com)



## Appendix E: Software License Agreement

### Software in Linksys Products

This product from Cisco-Linksys LLC or from one of its affiliates Cisco Systems-Linksys (Asia) Pte Ltd. or Cisco-Linksys K.K. ("Linksys") contains software (including firmware) originating from Linksys and its suppliers and may also contain software from the open source community. Any software originating from Linksys and its suppliers is licensed under the Linksys Software License Agreement contained at Schedule 1 below. You may also be prompted to review and accept that Linksys Software License Agreement upon installation of the software

Any software from the open source community is licensed under the specific license terms applicable to that software made available by Linksys at [www.linksysbycisco.com/gpl](http://www.linksysbycisco.com/gpl) or as provided for in Schedules 2, 3 and 4 below.

Where such specific license terms entitle you to the source code of such software, that source code is upon request available at cost from Linksys for at least three years from the purchase date of this product and may also be available for download from [www.linksysbycisco.com/gpl](http://www.linksysbycisco.com/gpl). For detailed license terms and additional information on open source software in Linksys products please look at the Linksys public web site at: [www.linksysbycisco.com/gpl](http://www.linksysbycisco.com/gpl) or Schedules 2, 3 or 4 below as applicable.

BY DOWNLOADING OR INSTALLING THE SOFTWARE, OR USING THE PRODUCT CONTAINING THE SOFTWARE, YOU ARE CONSENTING TO BE BOUND BY THE SOFTWARE LICENSE AGREEMENTS BELOW. IF YOU DO NOT AGREE TO ALL OF THESE TERMS, THEN YOU MAY NOT DOWNLOAD, INSTALL OR USE THE SOFTWARE. YOU MAY RETURN UNUSED SOFTWARE (OR, IF THE SOFTWARE IS SUPPLIED AS PART OF ANOTHER PRODUCT, THE UNUSED PRODUCT) FOR A FULL REFUND UP TO 30 DAYS AFTER ORIGINAL PURCHASE, SUBJECT TO THE RETURN PROCESS AND POLICIES OF THE PARTY FROM WHICH YOU PURCHASED SUCH PRODUCT OR SOFTWARE.

### Software Licenses

The software Licenses applicable to software from Linksys are made available at the Linksys public web site at: [www.linksysbycisco.com](http://www.linksysbycisco.com). For your convenience of reference, a copy of the Linksys Software License Agreement and the main open source code licenses used by Linksys in its products are contained in the Schedules below.

### Schedule 1 - Linksys Software License Agreement

THIS LICENSE AGREEMENT IS BETWEEN YOU AND CISCO-LINKSYS LLC OR ONE OF ITS AFFILIATES CISCO SYSTEMS-LINKSYS (ASIA) PTE LTD. OR CISCO-LINKSYS K.K. ("LINKSYS") LICENSING THE SOFTWARE INSTEAD OF CISCO-LINKSYS LLC. BY DOWNLOADING OR INSTALLING THE SOFTWARE, OR USING THE PRODUCT CONTAINING THE SOFTWARE, YOU ARE CONSENTING TO BE BOUND BY THIS AGREEMENT. IF YOU DO NOT AGREE TO ALL OF THESE TERMS, THEN YOU MAY NOT DOWNLOAD, INSTALL OR USE THE SOFTWARE. YOU MAY RETURN UNUSED SOFTWARE (OR, IF THE SOFTWARE IS SUPPLIED AS PART OF ANOTHER PRODUCT, THE UNUSED PRODUCT) FOR A FULL REFUND UP TO 30 DAYS AFTER ORIGINAL PURCHASE, SUBJECT TO THE RETURN PROCESS AND POLICIES OF THE PARTY FROM WHICH YOU PURCHASED SUCH PRODUCT OR SOFTWARE.

**License.** Subject to the terms and conditions of this Agreement, Linksys grants the original end user purchaser of the Linksys product containing the Software ("You") a nonexclusive license to use the Software solely as embedded in or (where authorized in the applicable documentation) for communication with such product. This license may not be sublicensed, and is not transferable except to a person or entity to which you transfer ownership of the complete Linksys product containing the Software, provided you permanently transfer all rights under this Agreement and do not retain any full or partial copies of the Software, and the recipient agrees to the terms of this Agreement.

"Software" includes, and this Agreement will apply to (a) the software of Linksys or its suppliers provided in or with the applicable Linksys product, excluding technology from the open source community, and (b) any upgrades, updates, bug fixes or modified versions ("Upgrades") or backup copies of the Software supplied to You by Linksys or an authorized reseller, provided you already hold a valid license to the original software and have paid any applicable fee for the Upgrade.

**Protection of Information.** The Software and documentation contain trade secrets and/or copyrighted materials of Linksys or its suppliers. You will not copy or modify the Software or decompile, decrypt, reverse engineer or disassemble the Software (except to the extent expressly permitted by law notwithstanding this provision), and You will not disclose or make available such trade secrets or copyrighted material in any form to any third party. Title to and ownership of the Software and documentation and any portion thereof, will remain solely with Linksys or its suppliers.

**Collection and Processing of Information.** You agree that Linksys and/or its affiliates may, from time to time, collect and process information about your Linksys product and/or the Software and/or your use of either in order (i) to enable Linksys to offer you Upgrades; (ii) to ensure that

your Linksys product and/or the Software is being used in accordance with the terms of this Agreement; (iii) to provide improvements to the way Linksys delivers technology to you and to other Linksys customers; (iv) to enable Linksys to comply with the terms of any agreements it has with any third parties regarding your Linksys product and/or Software and/or (v) to enable Linksys to comply with all applicable laws and/or regulations, or the requirements of any regulatory authority or government agency. Linksys and/or its affiliates may collect and process this information provided that it does not identify you personally. Your use of your Linksys product and/or the Software constitutes this consent by you to Linksys and/or its affiliates' collection and use of such information and, for EEA customers, to the transfer of such information to a location outside the EEA.

**Software Upgrades etc.** If the Software enables you to receive Upgrades, you may elect at any time to receive these Upgrades either automatically or manually. If you elect to receive Upgrades manually or you otherwise elect not to receive or be notified of any Upgrades, you may expose your Linksys product and/or the Software to serious security threats and/or some features within your Linksys product and/or Software may become inaccessible. There may be circumstances where we apply an Upgrade automatically in order to comply with changes in legislation, legal or regulatory requirements or as a result of requirements to comply with the terms of any agreements Linksys has with any third parties regarding your Linksys product and/or the Software. You will always be notified of any Upgrades being delivered to you. The terms of this license will apply to any such Upgrade unless the Upgrade in question is accompanied by a separate license, in which event the terms of that license will apply.

**Open Source Software.** The GPL or other open source code incorporated into the Software and the open source license for such source code are available for free download at <http://www.linksysbycisco.com/gpl>. If you would like a copy of the GPL or other open source code in this Software on a CD, Linksys will mail to You a CD with such code for \$9.99 plus the cost of shipping, upon request.

**Term and Termination.** You may terminate this License at any time by destroying all copies of the Software and documentation. Your rights under this License will terminate immediately without notice from Linksys if You fail to comply with any provision of this Agreement.

**Limited Warranty.** The warranty terms and period specified in the applicable Linksys Product User Guide shall also apply to the Software.

**Disclaimer of Liabilities.** IN NO EVENT WILL LINKSYS OR ITS SUPPLIERS BE LIABLE FOR ANY LOST DATA, REVENUE OR PROFIT, OR FOR SPECIAL, INDIRECT, CONSEQUENTIAL, INCIDENTAL OR PUNITIVE DAMAGES, REGARDLESS OF

CAUSE (INCLUDING NEGLIGENCE), ARISING OUT OF OR RELATED TO THE USE OF OR INABILITY TO USE THE SOFTWARE, EVEN IF LINKSYS HAS BEEN ADVISED OF THE POSSIBILITY OF SUCH DAMAGES. IN NO EVENT WILL LINKSYS' LIABILITY EXCEED THE AMOUNT PAID BY YOU FOR THE PRODUCT. The foregoing limitations will apply even if any warranty or remedy under this Agreement fails of its essential purpose. Some jurisdictions do not allow the exclusion or limitation of incidental or consequential damages, so the above limitation or exclusion may not apply to You.

**Export.** Software, including technical data, may be subject to U.S. export control laws and regulations and/or export or import regulations in other countries. You agree to comply strictly with all such laws and regulations.

**U.S. Government Users.** The Software and documentation qualify as "commercial items" as defined at 48 C.F.R. 2.101 and 48 C.F.R. 12.212. All Government users acquire the Software and documentation with only those rights herein that apply to non-governmental customers.

**General Terms.** This Agreement will be governed by and construed in accordance with the laws of the State of California, without reference to conflict of laws principles. The United Nations Convention on Contracts for the International Sale of Goods will not apply. If any portion of this Agreement is found to be void or unenforceable, the remaining provisions will remain in full force and effect. This Agreement constitutes the entire agreement between the parties with respect to the Software and supersedes any conflicting or additional terms contained in any purchase order or elsewhere.

## END OF SCHEDULE 1

## Schedule 2

If this Linksys product contains open source software licensed under Version 2 of the "GNU General Public License" then the license terms below in this Schedule 2 will apply to that open source software. The license terms below in this Schedule 2 are from the public web site at <http://www.gnu.org/copyleft/gpl.html>

## GNU GENERAL PUBLIC LICENSE

Version 2, June 1991

Copyright © 1989, 1991 Free Software Foundation, Inc.

51 Franklin Street, Fifth Floor, Boston, MA 02110-1301, USA

Everyone is permitted to copy and distribute verbatim copies of this license document, but changing it is not allowed.

## Preamble

The licenses for most software are designed to take away your freedom to share and change it. By contrast, the GNU General Public License is intended to guarantee your freedom to share and change free software—to make sure the software is free for all its users. This General Public License applies to most of the Free Software Foundation's software and to any other program whose authors commit to using it. (Some other Free Software Foundation software is covered by the GNU Lesser General Public License instead.) You can apply it to your programs, too.

When we speak of free software, we are referring to freedom, not price. Our General Public Licenses are designed to make sure that you have the freedom to distribute copies of free software (and charge for this service if you wish), that you receive source code or can get it if you want it, that you can change the software or use pieces of it in new free programs; and that you know you can do these things.

To protect your rights, we need to make restrictions that forbid anyone to deny you these rights or to ask you to surrender the rights. These restrictions translate to certain responsibilities for you if you distribute copies of the software, or if you modify it.

For example, if you distribute copies of such a program, whether gratis or for a fee, you must give the recipients all the rights that you have. You must make sure that they, too, receive or can get the source code. And you must show them these terms so they know their rights.

We protect your rights with two steps: (1) copyright the software, and (2) offer you this license which gives you legal permission to copy, distribute and/or modify the software.

Also, for each author's protection and ours, we want to make certain that everyone understands that there is no warranty for this free software. If the software is modified by someone else and passed on, we want its recipients to know that what they have is not the original, so that any problems introduced by others will not reflect on the original authors' reputations.

Finally, any free program is threatened constantly by software patents. We wish to avoid the danger that redistributors of a free program will individually obtain patent licenses, in effect making the program proprietary. To prevent this, we have made it clear that any patent must be licensed for everyone's free use or not licensed at all.

The precise terms and conditions for copying, distribution and modification follow.

## TERMS AND CONDITIONS FOR COPYING, DISTRIBUTION AND MODIFICATION

0. This License applies to any program or other work which contains a notice placed by the copyright holder saying it may be distributed under the terms of this General Public License. The "Program", below, refers to any such program or work, and a "work based on the Program" means either the Program or any derivative work under copyright law: that is to say, a work containing the Program or a portion of it, either verbatim or with modifications and/or translated into another language. (Hereinafter, translation is included without limitation in the term "modification".) Each licensee is addressed as "you".

Activities other than copying, distribution and modification are not covered by this License; they are outside its scope. The act of running the Program is not restricted, and the output from the Program is covered only if its contents constitute a work based on the Program (independent of having been made by running the Program). Whether that is true depends on what the Program does.

1. You may copy and distribute verbatim copies of the Program's source code as you receive it, in any medium, provided that you conspicuously and appropriately publish on each copy an appropriate copyright notice and disclaimer of warranty; keep intact all the notices that refer to this License and to the absence of any warranty; and give any other recipients of the Program a copy of this License along with the Program.

You may charge a fee for the physical act of transferring a copy, and you may at your option offer warranty protection in exchange for a fee.

2. You may modify your copy or copies of the Program or any portion of it, thus forming a work based on the Program, and copy and distribute such modifications or work under the terms of Section 1 above, provided that you also meet all of these conditions:
  - a. You must cause the modified files to carry prominent notices stating that you changed the files and the date of any change.
  - b. You must cause any work that you distribute or publish, that in whole or in part contains or is derived from the Program or any part thereof, to be licensed as a whole at no charge to all third parties under the terms of this License.

- c. If the modified program normally reads commands interactively when run, you must cause it, when started running for such interactive use in the most ordinary way, to print or display an announcement including an appropriate copyright notice and a notice that there is no warranty (or else, saying that you provide a warranty) and that users may redistribute the program under these conditions, and telling the user how to view a copy of this License. (Exception: if the Program itself is interactive but does not normally print such an announcement, your work based on the Program is not required to print an announcement.)

These requirements apply to the modified work as a whole. If identifiable sections of that work are not derived from the Program, and can be reasonably considered independent and separate works in themselves, then this License, and its terms, do not apply to those sections when you distribute them as separate works. But when you distribute the same sections as part of a whole which is a work based on the Program, the distribution of the whole must be on the terms of this License, whose permissions for other licensees extend to the entire whole, and thus to each and every part regardless of who wrote it.

Thus, it is not the intent of this section to claim rights or contest your rights to work written entirely by you; rather, the intent is to exercise the right to control the distribution of derivative or collective works based on the Program.

In addition, mere aggregation of another work not based on the Program with the Program (or with a work based on the Program) on a volume of a storage or distribution medium does not bring the other work under the scope of this License.

3. You may copy and distribute the Program (or a work based on it, under Section 2) in object code or executable form under the terms of Sections 1 and 2 above provided that you also do one of the following:
  - a. Accompany it with the complete corresponding machine-readable source code, which must be distributed under the terms of Sections 1 and 2 above on a medium customarily used for software interchange; or,
  - b. Accompany it with a written offer, valid for at least three years, to give any third party, for a charge no more than your cost of physically performing source distribution, a complete machine-readable copy of the corresponding source code, to be distributed under the terms of Sections 1 and 2 above on a medium customarily used for software interchange; or,

- c. Accompany it with the information you received as to the offer to distribute corresponding source code. (This alternative is allowed only for noncommercial distribution and only if you received the program in object code or executable form with such an offer, in accord with Subsection b above.)

The source code for a work means the preferred form of the work for making modifications to it. For an executable work, complete source code means all the source code for all modules it contains, plus any associated interface definition files, plus the scripts used to control compilation and installation of the executable. However, as a special exception, the source code distributed need not include anything that is normally distributed (in either source or binary form) with the major components (compiler, kernel, and so on) of the operating system on which the executable runs, unless that component itself accompanies the executable.

If distribution of executable or object code is made by offering access to copy from a designated place, then offering equivalent access to copy the source code from the same place counts as distribution of the source code, even though third parties are not compelled to copy the source along with the object code.

4. You may not copy, modify, sublicense, or distribute the Program except as expressly provided under this License. Any attempt otherwise to copy, modify, sublicense or distribute the Program is void, and will automatically terminate your rights under this License. However, parties who have received copies, or rights, from you under this License will not have their licenses terminated so long as such parties remain in full compliance.
5. You are not required to accept this License, since you have not signed it. However, nothing else grants you permission to modify or distribute the Program or its derivative works. These actions are prohibited by law if you do not accept this License. Therefore, by modifying or distributing the Program (or any work based on the Program), you indicate your acceptance of this License to do so, and all its terms and conditions for copying, distributing or modifying the Program or works based on it.
6. Each time you redistribute the Program (or any work based on the Program), the recipient automatically receives a license from the original licensor to copy, distribute or modify the Program subject to these terms and conditions. You may not impose any further restrictions on the recipients' exercise of the rights granted herein. You are not responsible for enforcing compliance by third parties to this License.



7. If, as a consequence of a court judgment or allegation of patent infringement or for any other reason (not limited to patent issues), conditions are imposed on you (whether by court order, agreement or otherwise) that contradict the conditions of this License, they do not excuse you from the conditions of this License. If you cannot distribute so as to satisfy simultaneously your obligations under this License and any other pertinent obligations, then as a consequence you may not distribute the Program at all. For example, if a patent license would not permit royalty-free redistribution of the Program by all those who receive copies directly or indirectly through you, then the only way you could satisfy both it and this License would be to refrain entirely from distribution of the Program.

If any portion of this section is held invalid or unenforceable under any particular circumstance, the balance of the section is intended to apply and the section as a whole is intended to apply in other circumstances.

It is not the purpose of this section to induce you to infringe any patents or other property right claims or to contest validity of any such claims; this section has the sole purpose of protecting the integrity of the free software distribution system, which is implemented by public license practices. Many people have made generous contributions to the wide range of software distributed through that system in reliance on consistent application of that system; it is up to the author/donor to decide if he or she is willing to distribute software through any other system and a licensee cannot impose that choice.

This section is intended to make thoroughly clear what is believed to be a consequence of the rest of this License.

8. If the distribution and/or use of the Program is restricted in certain countries either by patents or by copyrighted interfaces, the original copyright holder who places the Program under this License may add an explicit geographical distribution limitation excluding those countries, so that distribution is permitted only in or among countries not thus excluded. In such case, this License incorporates the limitation as if written in the body of this License.
9. The Free Software Foundation may publish revised and/or new versions of the General Public License from time to time. Such new versions will be similar in spirit to the present version, but may differ in detail to address new problems or concerns.

Each version is given a distinguishing version number. If the Program specifies a version number of this License which applies to it and “any later version”, you have the option of following the terms and conditions either of that version or of any later version published by the Free Software Foundation. If the Program does

not specify a version number of this License, you may choose any version ever published by the Free Software Foundation.

10. If you wish to incorporate parts of the Program into other free programs whose distribution conditions are different, write to the author to ask for permission. For software which is copyrighted by the Free Software Foundation, write to the Free Software Foundation; we sometimes make exceptions for this. Our decision will be guided by the two goals of preserving the free status of all derivatives of our free software and of promoting the sharing and reuse of software generally.

## NO WARRANTY

11. BECAUSE THE PROGRAM IS LICENSED FREE OF CHARGE, THERE IS NO WARRANTY FOR THE PROGRAM, TO THE EXTENT PERMITTED BY APPLICABLE LAW. EXCEPT WHEN OTHERWISE STATED IN WRITING THE COPYRIGHT HOLDERS AND/OR OTHER PARTIES PROVIDE THE PROGRAM “AS IS” WITHOUT WARRANTY OF ANY KIND, EITHER EXPRESSED OR IMPLIED, INCLUDING, BUT NOT LIMITED TO, THE IMPLIED WARRANTIES OF MERCHANTABILITY AND FITNESS FOR A PARTICULAR PURPOSE. THE ENTIRE RISK AS TO THE QUALITY AND PERFORMANCE OF THE PROGRAM IS WITH YOU. SHOULD THE PROGRAM PROVE DEFECTIVE, YOU ASSUME THE COST OF ALL NECESSARY SERVICING, REPAIR OR CORRECTION.
12. IN NO EVENT UNLESS REQUIRED BY APPLICABLE LAW OR AGREED TO IN WRITING WILL ANY COPYRIGHT HOLDER, OR ANY OTHER PARTY WHO MAY MODIFY AND/OR REDISTRIBUTE THE PROGRAM AS PERMITTED ABOVE, BE LIABLE TO YOU FOR DAMAGES, INCLUDING ANY GENERAL, SPECIAL, INCIDENTAL OR CONSEQUENTIAL DAMAGES ARISING OUT OF THE USE OR INABILITY TO USE THE PROGRAM (INCLUDING BUT NOT LIMITED TO LOSS OF DATA OR DATA BEING RENDERED INACCURATE OR LOSSES SUSTAINED BY YOU OR THIRD PARTIES OR A FAILURE OF THE PROGRAM TO OPERATE WITH ANY OTHER PROGRAMS), EVEN IF SUCH HOLDER OR OTHER PARTY HAS BEEN ADVISED OF THE POSSIBILITY OF SUCH DAMAGES.

END OF TERMS AND CONDITIONS

## END OF SCHEDULE 2

## Schedule 3

If this Linksys product contains open source software licensed under Version 2.1 of the “GNU Lesser General Public License” then the license terms below in this Schedule 3 will apply to that open source software. The license terms below in this Schedule 3 are from the public web site at <http://www.gnu.org/licenses/old-licenses/lgpl-2.1.html>.



## GNU LESSER GENERAL PUBLIC LICENSE

Version 2.1, February 1999

Copyright (C) 1991, 1999 Free Software Foundation, Inc.

51 Franklin Street, Fifth Floor, Boston, MA 02110-1301, USA

Everyone is permitted to copy and distribute verbatim copies of this license document, but changing it is not allowed.

[This is the first released version of the Lesser GPL. It also counts as the successor of the GNU Library Public License, version 2, hence the version number 2.1.]

### Preamble

The licenses for most software are designed to take away your freedom to share and change it. By contrast, the GNU General Public Licenses are intended to guarantee your freedom to share and change free software—to make sure the software is free for all its users.

This license, the Lesser General Public License, applies to some specially designated software packages—typically libraries—of the Free Software Foundation and other authors who decide to use it. You can use it too, but we suggest you first think carefully about whether this license or the ordinary General Public License is the better strategy to use in any particular case, based on the explanations below.

When we speak of free software, we are referring to freedom of use, not price. Our General Public Licenses are designed to make sure that you have the freedom to distribute copies of free software (and charge for this service if you wish); that you receive source code or can get it if you want it; that you can change the software and use pieces of it in new free programs; and that you are informed that you can do these things.

To protect your rights, we need to make restrictions that forbid distributors to deny you these rights or to ask you to surrender these rights. These restrictions translate to certain responsibilities for you if you distribute copies of the library or if you modify it.

For example, if you distribute copies of the library, whether gratis or for a fee, you must give the recipients all the rights that we gave you. You must make sure that they, too, receive or can get the source code. If you link other code with the library, you must provide complete object files to the recipients, so that they can relink them with the library after making changes to the library and recompiling it. And you must show them these terms so they know their rights.

We protect your rights with a two-step method: (1) we copyright the library, and (2) we offer you this license, which gives you legal permission to copy, distribute and/or modify the library.

To protect each distributor, we want to make it very clear that there is no warranty for the free library. Also, if the library is modified by someone else and passed on, the recipients should know that what they have is not the original version, so that the original author's reputation will not be affected by problems that might be introduced by others.

Finally, software patents pose a constant threat to the existence of any free program. We wish to make sure that a company cannot effectively restrict the users of a free program by obtaining a restrictive license from a patent holder. Therefore, we insist that any patent license obtained for a version of the library must be consistent with the full freedom of use specified in this license.

Most GNU software, including some libraries, is covered by the ordinary GNU General Public License. This license, the GNU Lesser General Public License, applies to certain designated libraries, and is quite different from the ordinary General Public License. We use this license for certain libraries in order to permit linking those libraries into non-free programs.

When a program is linked with a library, whether statically or using a shared library, the combination of the two is legally speaking a combined work, a derivative of the original library. The ordinary General Public License therefore permits such linking only if the entire combination fits its criteria of freedom. The Lesser General Public License permits more lax criteria for linking other code with the library.

We call this license the “Lesser” General Public License because it does Less to protect the user's freedom than the ordinary General Public License. It also provides other free software developers Less of an advantage over competing non-free programs. These disadvantages are the reason we use the ordinary General Public License for many libraries. However, the Lesser license provides advantages in certain special circumstances.

For example, on rare occasions, there may be a special need to encourage the widest possible use of a certain library, so that it becomes a de-facto standard. To achieve this, non-free programs must be allowed to use the library. A more frequent case is that a free library does the same job as widely used non-free libraries. In this case, there is little to gain by limiting the free library to free software only, so we use the Lesser General Public License.

In other cases, permission to use a particular library in non-free programs enables a greater number of people to use a large body of free software. For example, permission to use the GNU C Library in non-free programs enables many more people to use the whole GNU operating system, as well as its variant, the GNU/Linux operating system.

Although the Lesser General Public License is Less protective of the users' freedom, it does ensure that the user of a program that is linked with the Library has the

freedom and the wherewithal to run that program using a modified version of the Library.

The precise terms and conditions for copying, distribution and modification follow. Pay close attention to the difference between a “work based on the library” and a “work that uses the library”. The former contains code derived from the library, whereas the latter must be combined with the library in order to run.

## GNU LESSER GENERAL PUBLIC LICENSE

### TERMS AND CONDITIONS FOR COPYING, DISTRIBUTION AND MODIFICATION

0. This License Agreement applies to any software library or other program which contains a notice placed by the copyright holder or other authorized party saying it may be distributed under the terms of this Lesser General Public License (also called “this License”). Each licensee is addressed as “you”.

A “library” means a collection of software functions and/or data prepared so as to be conveniently linked with application programs (which use some of those functions and data) to form executables.

The “Library”, below, refers to any such software library or work which has been distributed under these terms. A “work based on the Library” means either the Library or any derivative work under copyright law: that is to say, a work containing the Library or a portion of it, either verbatim or with modifications and/or translated straightforwardly into another language. (Hereinafter, translation is included without limitation in the term “modification”.)

“Source code” for a work means the preferred form of the work for making modifications to it. For a library, complete source code means all the source code for all modules it contains, plus any associated interface definition files, plus the scripts used to control compilation and installation of the library.

Activities other than copying, distribution and modification are not covered by this License; they are outside its scope. The act of running a program using the Library is not restricted, and output from such a program is covered only if its contents constitute a work based on the Library (independent of the use of the Library in a tool for writing it). Whether that is true depends on what the Library does and what the program that uses the Library does.

1. You may copy and distribute verbatim copies of the Library’s complete source code as you receive it, in any medium, provided that you conspicuously and appropriately publish on each copy an appropriate copyright notice and disclaimer of warranty; keep intact all the notices that refer to this License and to the absence of any warranty; and distribute a copy of this License along with the Library.

You may charge a fee for the physical act of transferring a copy, and you may at your option offer warranty protection in exchange for a fee.

2. You may modify your copy or copies of the Library or any portion of it, thus forming a work based on the Library, and copy and distribute such modifications or work under the terms of Section 1 above, provided that you also meet all of these conditions:
  - a) The modified work must itself be a software library.
  - b) You must cause the files modified to carry prominent notices stating that you changed the files and the date of any change.
  - c) You must cause the whole of the work to be licensed at no charge to all third parties under the terms of this License.
  - d) If a facility in the modified Library refers to a function or a table of data to be supplied by an application program that uses the facility, other than as an argument passed when the facility is invoked, then you must make a good faith effort to ensure that, in the event an application does not supply such function or table, the facility still operates, and performs whatever part of its purpose remains meaningful.

(For example, a function in a library to compute square roots has a purpose that is entirely well-defined independent of the application. Therefore, Subsection 2d requires that any application-supplied function or table used by this function must be optional: if the application does not supply it, the square root function must still compute square roots.)

These requirements apply to the modified work as a whole. If identifiable sections of that work are not derived from the Library, and can be reasonably considered independent and separate works in themselves, then this License, and its terms, do not apply to those sections when you distribute them as separate works. But when you distribute the same sections as part of a whole which is a work based on the Library, the distribution of the whole must be on the terms of this License, whose permissions for other licensees extend to the entire whole, and thus to each and every part regardless of who wrote it.

Thus, it is not the intent of this section to claim rights or contest your rights to work written entirely by you; rather, the intent is to exercise the right to control the distribution of derivative or collective works based on the Library.

In addition, mere aggregation of another work not based on the Library with the Library (or with a work based on the Library) on a volume of a storage or distribution medium does not bring the other work under the scope of this License.

3. You may opt to apply the terms of the ordinary GNU General Public License instead of this License to a given copy of the Library. To do this, you must alter all the notices that refer to this License, so that they refer to the ordinary GNU General Public License, version 2, instead of to this License. (If a newer version than version 2 of the ordinary GNU General Public License has appeared, then you can specify that version instead if you wish.) Do not make any other change in these notices.

Once this change is made in a given copy, it is irreversible for that copy, so the ordinary GNU General Public License applies to all subsequent copies and derivative works made from that copy.

This option is useful when you wish to copy part of the code of the Library into a program that is not a library.

4. You may copy and distribute the Library (or a portion or derivative of it, under Section 2) in object code or executable form under the terms of Sections 1 and 2 above provided that you accompany it with the complete corresponding machine-readable source code, which must be distributed under the terms of Sections 1 and 2 above on a medium customarily used for software interchange.

If distribution of object code is made by offering access to copy from a designated place, then offering equivalent access to copy the source code from the same place satisfies the requirement to distribute the source code, even though third parties are not compelled to copy the source along with the object code.

5. A program that contains no derivative of any portion of the Library, but is designed to work with the Library by being compiled or linked with it, is called a “work that uses the Library”. Such a work, in isolation, is not a derivative work of the Library, and therefore falls outside the scope of this License.

However, linking a “work that uses the Library” with the Library creates an executable that is a derivative of the Library (because it contains portions of the Library), rather than a “work that uses the library”. The executable is therefore covered by this License. Section 6 states terms for distribution of such executables.

When a “work that uses the Library” uses material from a header file that is part of the Library, the object code for the work may be a derivative work of the Library even though the source code is not. Whether this is true is especially significant if the work can be linked without the Library, or if the work is itself a library. The threshold for this to be true is not precisely defined by law.

If such an object file uses only numerical parameters, data structure layouts and accessors, and small macros and small inline functions (ten lines or less in length), then the use of the object file is unrestricted, regardless of whether it is legally a derivative work. (Executables containing this object code plus portions of the Library will still fall under Section 6.)

Otherwise, if the work is a derivative of the Library, you may distribute the object code for the work under the terms of Section 6. Any executables containing that work also fall under Section 6, whether or not they are linked directly with the Library itself.

6. As an exception to the Sections above, you may also combine or link a “work that uses the Library” with the Library to produce a work containing portions of the Library, and distribute that work under terms of your choice, provided that the terms permit modification of the work for the customer’s own use and reverse engineering for debugging such modifications.

You must give prominent notice with each copy of the work that the Library is used in it and that the Library and its use are covered by this License. You must supply a copy of this License. If the work during execution displays copyright notices, you must include the copyright notice for the Library among them, as well as a reference directing the user to the copy of this License. Also, you must do one of these things:

- a) Accompany the work with the complete corresponding machine-readable source code for the Library including whatever changes were used in the work (which must be distributed under Sections 1 and 2 above); and, if the work is an executable linked with the Library, with the complete machine-readable “work that uses the Library”, as object code and/or source code, so that the user can modify the Library and then relink to produce a modified executable containing the modified Library. (It is understood that the user who changes the contents of definitions files in the Library will not necessarily be able to recompile the application to use the modified definitions.)

- b) Use a suitable shared library mechanism for linking with the Library. A suitable mechanism is one that (1) uses at run time a copy of the library already present on the user's computer system, rather than copying library functions into the executable, and (2) will operate properly with a modified version of the library, if the user installs one, as long as the modified version is interface-compatible with the version that the work was made with.
- c) Accompany the work with a written offer, valid for at least three years, to give the same user the materials specified in Subsection 6a, above, for a charge no more than the cost of performing this distribution.
- d) If distribution of the work is made by offering access to copy from a designated place, offer equivalent access to copy the above specified materials from the same place.
- e) Verify that the user has already received a copy of these materials or that you have already sent this user a copy.

For an executable, the required form of the “work that uses the Library” must include any data and utility programs needed for reproducing the executable from it. However, as a special exception, the materials to be distributed need not include anything that is normally distributed (in either source or binary form) with the major components (compiler, kernel, and so on) of the operating system on which the executable runs, unless that component itself accompanies the executable.

It may happen that this requirement contradicts the license restrictions of other proprietary libraries that do not normally accompany the operating system. Such a contradiction means you cannot use both them and the Library together in an executable that you distribute.

- 7. You may place library facilities that are a work based on the Library side-by-side in a single library together with other library facilities not covered by this License, and distribute such a combined library, provided that the separate distribution of the work based on the Library and of the other library facilities is otherwise permitted, and provided that you do these two things:
  - a) Accompany the combined library with a copy of the same work based on the Library, uncombined with any other library facilities. This must be distributed under the terms of the Sections above.
  - b) Give prominent notice with the combined library of the fact that part of it is a work based on the Library, and explaining where to find the accompanying uncombined form of the same work.

- 8. You may not copy, modify, sublicense, link with, or distribute the Library except as expressly provided under this License. Any attempt otherwise to copy, modify, sublicense, link with, or distribute the Library is void, and will automatically terminate your rights under this License. However, parties who have received copies, or rights, from you under this License will not have their licenses terminated so long as such parties remain in full compliance.
- 9. You are not required to accept this License, since you have not signed it. However, nothing else grants you permission to modify or distribute the Library or its derivative works. These actions are prohibited by law if you do not accept this License. Therefore, by modifying or distributing the Library (or any work based on the Library), you indicate your acceptance of this License to do so, and all its terms and conditions for copying, distributing or modifying the Library or works based on it.
- 10. Each time you redistribute the Library (or any work based on the Library), the recipient automatically receives a license from the original licensor to copy, distribute, link with or modify the Library subject to these terms and conditions. You may not impose any further restrictions on the recipients' exercise of the rights granted herein. You are not responsible for enforcing compliance by third parties with this License.
- 11. If, as a consequence of a court judgment or allegation of patent infringement or for any other reason (not limited to patent issues), conditions are imposed on you (whether by court order, agreement or otherwise) that contradict the conditions of this License, they do not excuse you from the conditions of this License. If you cannot distribute so as to satisfy simultaneously your obligations under this License and any other pertinent obligations, then as a consequence you may not distribute the Library at all. For example, if a patent license would not permit royalty-free redistribution of the Library by all those who receive copies directly or indirectly through you, then the only way you could satisfy both it and this License would be to refrain entirely from distribution of the Library.

If any portion of this section is held invalid or unenforceable under any particular circumstance, the balance of the section is intended to apply, and the section as a whole is intended to apply in other circumstances.

It is not the purpose of this section to induce you to infringe any patents or other property right claims or to contest validity of any such claims; this section has the sole purpose of protecting the integrity of the free software distribution system which is implemented by public license practices. Many people have made generous contributions to the wide range of



software distributed through that system in reliance on consistent application of that system; it is up to the author/donor to decide if he or she is willing to distribute software through any other system and a licensee cannot impose that choice.

This section is intended to make thoroughly clear what is believed to be a consequence of the rest of this License.

12. If the distribution and/or use of the Library is restricted in certain countries either by patents or by copyrighted interfaces, the original copyright holder who places the Library under this License may add an explicit geographical distribution limitation excluding those countries, so that distribution is permitted only in or among countries not thus excluded. In such case, this License incorporates the limitation as if written in the body of this License.

13. The Free Software Foundation may publish revised and/or new versions of the Lesser General Public License from time to time. Such new versions will be similar in spirit to the present version, but may differ in detail to address new problems or concerns.

Each version is given a distinguishing version number. If the Library specifies a version number of this License which applies to it and "any later version", you have the option of following the terms and conditions either of that version or of any later version published by the Free Software Foundation. If the Library does not specify a license version number, you may choose any version ever published by the Free Software Foundation.

14. If you wish to incorporate parts of the Library into other free programs whose distribution conditions are incompatible with these, write to the author to ask for permission. For software which is copyrighted by the Free Software Foundation, write to the Free Software Foundation; we sometimes make exceptions for this. Our decision will be guided by the two goals of preserving the free status of all derivatives of our free software and of promoting the sharing and reuse of software generally.

#### NO WARRANTY

15. BECAUSE THE LIBRARY IS LICENSED FREE OF CHARGE, THERE IS NO WARRANTY FOR THE LIBRARY, TO THE EXTENT PERMITTED BY APPLICABLE LAW. EXCEPT WHEN OTHERWISE STATED IN WRITING THE COPYRIGHT HOLDERS AND/OR OTHER PARTIES PROVIDE THE LIBRARY "AS IS" WITHOUT WARRANTY OF ANY KIND, EITHER EXPRESSED OR IMPLIED, INCLUDING, BUT NOT LIMITED TO, THE IMPLIED WARRANTIES OF MERCHANTABILITY AND FITNESS FOR A PARTICULAR PURPOSE. THE ENTIRE RISK AS TO THE QUALITY AND PERFORMANCE OF THE LIBRARY IS WITH YOU. SHOULD THE LIBRARY PROVE DEFECTIVE, YOU ASSUME THE COST OF ALL NECESSARY SERVICING, REPAIR OR CORRECTION.

16. IN NO EVENT UNLESS REQUIRED BY APPLICABLE LAW OR AGREED TO IN WRITING WILL ANY COPYRIGHT HOLDER, OR ANY OTHER PARTY WHO MAY MODIFY AND/OR REDISTRIBUTE THE LIBRARY AS PERMITTED ABOVE, BE LIABLE TO YOU FOR DAMAGES, INCLUDING ANY GENERAL, SPECIAL, INCIDENTAL OR CONSEQUENTIAL DAMAGES ARISING OUT OF THE USE OR INABILITY TO USE THE LIBRARY (INCLUDING BUT NOT LIMITED TO LOSS OF DATA OR DATA BEING RENDERED INACCURATE OR LOSSES SUSTAINED BY YOU OR THIRD PARTIES OR A FAILURE OF THE LIBRARY TO OPERATE WITH ANY OTHER SOFTWARE), EVEN IF SUCH HOLDER OR OTHER PARTY HAS BEEN ADVISED OF THE POSSIBILITY OF SUCH DAMAGES.

#### END OF TERMS AND CONDITIONS

#### END OF SCHEDULE 3

### Schedule 4

If this Linksys product contains open source software licensed under the OpenSSL license:

This product includes software developed by the OpenSSL Project for use in the OpenSSL Toolkit. (<http://www.openssl.org/>).

This product includes cryptographic software written by Eric Young (eay@cryptsoft.com).

This product includes software written by Tim Hudson (tjh@cryptsoft.com).

In addition, if this Linksys product contains open source software licensed under the OpenSSL license then the license terms below in this Schedule 3 will apply to that open source software. The license terms below in this Schedule 3 are from the public web site at <http://www.openssl.org/source/license.html>.

The OpenSSL toolkit stays under a dual license, i.e. both the conditions of the OpenSSL License and the original SSLeay license apply to the toolkit. See below for the actual license texts. Actually both licenses are BSD-style Open Source licenses. In case of any license issues related to OpenSSL please contact [openssl-core@openssl.org](mailto:openssl-core@openssl.org).



## OpenSSL License

Copyright © 1998-2007 The OpenSSL Project. All rights reserved.

Redistribution and use in source and binary forms, with or without modification, are permitted provided that the following conditions are met:

1. Redistributions of source code must retain the above copyright notice, this list of conditions and the following disclaimer.
2. Redistributions in binary form must reproduce the above copyright notice, this list of conditions and the following disclaimer in the documentation and/or other materials provided with the distribution.
3. All advertising materials mentioning features or use of this software must display the following acknowledgment: "This product includes software developed by the OpenSSL Project for use in the OpenSSL Toolkit. (<http://www.openssl.org/>)"
4. The names "OpenSSL Toolkit" and "OpenSSL Project" must not be used to endorse or promote products derived from this software without prior written permission. For written permission, please contact [openssl-core@openssl.org](mailto:openssl-core@openssl.org).
5. Products derived from this software may not be called "OpenSSL" nor may "OpenSSL" appear in their names without prior written permission of the OpenSSL Project.
6. Redistributions of any form whatsoever must retain the following acknowledgment: "This product includes software developed by the OpenSSL Project for use in the OpenSSL Toolkit (<http://www.openssl.org/>)"

THIS SOFTWARE IS PROVIDED BY THE OpenSSL PROJECT "AS IS" AND ANY EXPRESSED OR IMPLIED WARRANTIES, INCLUDING, BUT NOT LIMITED TO, THE IMPLIED WARRANTIES OF MERCHANTABILITY AND FITNESS FOR A PARTICULAR PURPOSE ARE DISCLAIMED. IN NO EVENT SHALL THE OpenSSL PROJECT OR ITS CONTRIBUTORS BE LIABLE FOR ANY DIRECT, INDIRECT, INCIDENTAL, SPECIAL, EXEMPLARY, OR CONSEQUENTIAL DAMAGES (INCLUDING, BUT NOT LIMITED TO, PROCUREMENT OF SUBSTITUTE GOODS OR SERVICES; LOSS OF USE, DATA, OR PROFITS; OR BUSINESS INTERRUPTION) HOWEVER CAUSED AND ON ANY THEORY OF LIABILITY, WHETHER IN CONTRACT, STRICT LIABILITY, OR TORT (INCLUDING NEGLIGENCE OR OTHERWISE) ARISING IN ANY WAY OUT OF THE USE OF THIS SOFTWARE, EVEN IF ADVISED OF THE POSSIBILITY OF SUCH DAMAGE.

This product includes cryptographic software written by Eric Young ([eay@cryptsoft.com](mailto:eay@cryptsoft.com)). This product includes software written by Tim Hudson ([tjh@cryptsoft.com](mailto:tjh@cryptsoft.com)).

## Original SSLeay License

Copyright © 1995-1998 Eric Young ([eay@cryptsoft.com](mailto:eay@cryptsoft.com))  
All rights reserved.

This package is an SSL implementation written by Eric Young ([eay@cryptsoft.com](mailto:eay@cryptsoft.com)).

The implementation was written so as to conform with Netscape's SSL.

This library is free for commercial and non-commercial use as long as the following conditions are adhered to. The following conditions apply to all code found in this distribution, be it the RC4, RSA, lhash, DES, etc., code; not just the SSL code. The SSL documentation included with this distribution is covered by the same copyright terms except that the holder is Tim Hudson ([tjh@cryptsoft.com](mailto:tjh@cryptsoft.com)).

Copyright remains Eric Young's, and as such any Copyright notices in the code are not to be removed.

If this package is used in a product, Eric Young should be given attribution as the author of the parts of the library used. This can be in the form of a textual message at program startup or in documentation (online or textual) provided with the package.

Redistribution and use in source and binary forms, with or without modification, are permitted provided that the following conditions are met:

1. Redistributions of source code must retain the copyright notice, this list of conditions and the following disclaimer.
2. Redistributions in binary form must reproduce the above copyright notice, this list of conditions and the following disclaimer in the documentation and/or other materials provided with the distribution.
3. All advertising materials mentioning features or use of this software must display the following acknowledgement:

"This product includes cryptographic software written by Eric Young ([eay@cryptsoft.com](mailto:eay@cryptsoft.com))"

The word 'cryptographic' can be left out if the routines from the library being used are not cryptographic related.

4. If you include any Windows specific code (or a derivative thereof) from the apps directory (application code) you must include an acknowledgement: "This product includes software written by Tim Hudson ([tjh@cryptsoft.com](mailto:tjh@cryptsoft.com))"

THIS SOFTWARE IS PROVIDED BY ERIC YOUNG "AS IS" AND ANY EXPRESS OR IMPLIED WARRANTIES, INCLUDING, BUT NOT LIMITED TO, THE IMPLIED WARRANTIES OF MERCHANTABILITY AND FITNESS FOR A PARTICULAR PURPOSE ARE DISCLAIMED. IN NO EVENT SHALL THE AUTHOR OR CONTRIBUTORS BE LIABLE FOR ANY

DIRECT, INDIRECT, INCIDENTAL, SPECIAL, EXEMPLARY, OR CONSEQUENTIAL DAMAGES (INCLUDING, BUT NOT LIMITED TO, PROCUREMENT OF SUBSTITUTE GOODS OR SERVICES; LOSS OF USE, DATA, OR PROFITS; OR BUSINESS INTERRUPTION) HOWEVER CAUSED AND ON ANY THEORY OF LIABILITY, WHETHER IN CONTRACT, STRICT LIABILITY, OR TORT (INCLUDING NEGLIGENCE OR OTHERWISE) ARISING IN ANY WAY OUT OF THE USE OF THIS SOFTWARE, EVEN IF ADVISED OF THE POSSIBILITY OF SUCH DAMAGE.

The license and distribution terms for any publicly available version or derivative of this code cannot be changed. i.e. this code cannot simply be copied and put under another distribution license [including the GNU Public License.]

**END OF SCHEDULE 4**