

# Installation Guide: Linksys 942 IP Phone

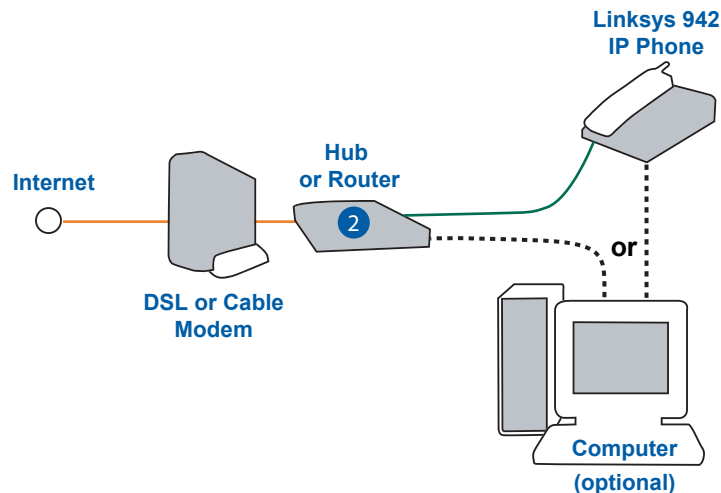
## LINKSYS 942



**Basic Installation Instructions**  
for connecting the IP phone to  
the Internet via a router connected  
to a Cable or DSL modem

### Your start up kit should include:

Linksys 942 IP Phone, Handset,  
Stand  
Handset Cord  
5v Power Adapter  
RJ-45 Ethernet Cable  
Quick Installation Guide



**Step 1:** Connect one end of the (RJ-11) spiral phone cord to the enclosed handset and the other end to the corresponding handset jack on the back of the phone. ①

**Step 2:** Connect one end of the included Ethernet cable into an available LAN Ethernet port on your router. ② Connect the other end of this Ethernet cable into the WAN Ethernet port ③ on the back of the phone.

**Step 3:** (Optional) Connect a second Ethernet cable (not included) from your computer's LAN Ethernet port to the "PC" Ethernet port on the back of the IP Phone ⑥ or you can connect your computer directly to your Hub or Router. ②

**Step 4:** Power the 942 in one of two ways. Power can be supplied via a 802.3af compliant Power over Ethernet connection on the phone's LAN port, or plug the optional 942 5-volt power supply into the back of the phone. ④ If desired, both the POE connection and the power supply may be simultaneously connected. Wait approximately 20 seconds while the soft key LEDs ⑤ flash indicating the phone is registering itself on the network. Once this cycle is completed, the soft key LEDs will light steady green.

**Step 5:** Pick up the handset and you should have dial tone. Place a test call by dialing any phone number. If you are able to complete your call, you have successfully installed your IP Phone and service. If you get any other result, please visit our website for additional support information.