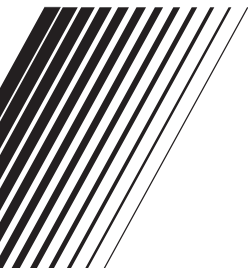




**ENGLISH**

---

# **SOFTWARE INSTALLATION AND USB CONNECTION GUIDE**



LYT1520-006A

**EN**

# Contents

JVC SOFTWARE LICENSE AGREEMENT..	
.....	3
Notice for Users .....	5
System Requirements .....	6
Software Installation (Windows®) .....	7
Connecting (Windows®) .....	8
Viewing the Contents of a Memory Card	
(Windows®) .....	9
Copying Files to the PC (Windows®) .....	10
Playing Back Files on the PC (Windows®) ...	10
Disconnecting the USB cable (Windows®)...	11
Connections (Macintosh) .....	12
Viewing the Contents of a Memory Card	
(Macintosh) .....	13
Copying Files to the PC (Macintosh) .....	14
Playing Back Files on the PC (Macintosh)...	14
Disconnecting the USB cable (Macintosh) ..	15
User's Guide/Help/Readme (Windows®) .....	15

# JVC SOFTWARE LICENSE AGREEMENT

## IMPORTANT

**TO CUSTOMERS: PLEASE MAKE SURE TO READ THIS CAREFULLY BEFORE INSTALLING OR USING THE SOFTWARE PROGRAM NAMED "DIGITAL PHOTO NAVIGATOR" ("Program") ON YOUR PC.**

The right to use the Program is granted by Victor Company of Japan, Limited ("JVC") to You only on the condition that You agree to the following.

Should You not agree to the terms here of, You may not install or use the Program. HOWEVER, INSTALLING OR USING THE PROGRAM INDICATES YOUR ACCEPTANCE OF THESE TERMS AND CONDITIONS.

### 1 COPYRIGHT; OWNERSHIP

You acknowledge that all copyrights and other intellectual property rights in the Program are owned by JVC and its licensor, and remain vested in JVC and such licensor. The Program is protected under the copyright law of Japan and other countries, and related Conventions.

### 2 GRANT OF LICENSE

- (1) Subject to the conditions of this Agreement, JVC grants to You a non-exclusive right to use the Program. You may install and use the Program on a HDD or other storage devices incorporated in Your PC.
- (2) You may make one (1) copy of the Program solely for your personal backup or archival purposes.

### 3 RESTRICTION ON THE PROGRAM

- (1) You may not reverse engineer, decompile, disassemble, revise or modify the Program, except to the extent that expressly permitted by applicable law.
- (2) You may not copy or use the Program, in whole or in part, other than as expressly specified in this Agreement.
- (3) You have no right to grant a license to use the Program, and may not

distribute, rent, lease or transfer the Program to any third party or otherwise let them use the Program.

### 4 LIMITED WARRANTY

JVC warrants that any media in which the Program is embodied are free from any defects in materials and workmanship for a period of thirty (30) days from the date of Your purchasing any our products accompanying the Program. JVC's entire liability and your exclusive remedy in connection with the Program shall be replacement of such defective media. EXCEPT FOR THE EXPRESS WARRANTIES STATED HERE IN AND TO THE EXTENT PERMITTED BY APPLICABLE LAW, JVC AND ITS LICENSORS DISCLAIM ANY OTHER WARRANTIES, EITHER EXPRESS OR IMPLIED, INCLUDING BUT NOT LIMITED TO IMPLIED WARRANTIES OF MERCHANTABILITY AND FITNESS FOR A PARTICULAR PURPOSE IN REGARD TO THE PROGRAM AND THE ACCOMPANYING PRINTED MATERIALS. SHOULD THERE BE ANY PROBLEM ARISING FROM OR CAUSED BY THE PROGRAM, YOU SHOULD SETTLE ALL SUCH PROBLEM AT YOUR OWN COST AND EXPENSE.

### 5 LIMITED LIABILITY

TO THE EXTENT PERMITTED BY APPLICABLE LAW, IN NO EVENT SHALL JVC AND ITS LICENSORS BE LIABLE FOR ANY INDIRECT, SPECIAL, INCIDENTAL OR CONSEQUENTIAL DAMAGES WHATSOEVER, REGARDLESS OF THE FORM OF ACTION WHETHER IN CONTRACT, TORT OR OTHERWISE ARISING OUT OF OR IN CONNECTION WITH THE USE OF OR INABILITY TO USE THE PROGRAM, EVEN IF JVC HAS BEEN ADVISED OF THE POSSIBILITY OF SUCH DAMAGES. YOU WILL INDEMNIFY AND HOLD HARMLESS JVC FROM ANY LOSS, LIABILITY OR COST ARISING OUT OF OR IN ANY WAY CONNECTED TO CLAIMS FROM ANY THIRD PARTY RELATING TO THE USE OF THE PROGRAM.

## **6 TERM**

This Agreement will become effective on the date when You install and use the Program on Your machine, and continue to be in effect until the termination under the following provision.

Should You breach any provision of this Agreement, JVC may terminate this Agreement without giving any notice to You. In this event, JVC may claim against You for any damages caused by Your breach. Should this Agreement be terminated, You must immediately destroy the Program stored in Your machine (including the erasing from any memory in Your PC), and no longer own such Program.

## **7 EXPORT CONTROL**

You agree that You will not ship, transfer or export the Program or underlying information and technology to any countries to which Japan and other relevant countries have initiated an embargo on such goods.

## **8 U.S. GOVERNMENT USER**

If You are an agency of the United States of America (the "Government"), You acknowledge JVC's representation that the Program is a "Commercial Item" as defined in Federal Acquisition Regulation (FAR) part 2.101 (g) consisting unpublished "Commercial Computer Software" as those items are used at FAR part 12.212 and is only licensed to You with the same use rights JVC grants all commercial end users pursuant to the terms of this Agreement.

## **9 GENERAL**

- (1) No modification, change, addition, deletion or other alternation of or to this Agreement will be valid unless reduced to writing and signed by an authorised representative of JVC.
- (2) If any part of this Agreement is held invalid by or in conflict with any law having jurisdiction over this Agreement, the remaining provisions will remain in full force and effect.
- (3) This Agreement shall be governed by and interpreted under the laws of Japan. The Tokyo District Court has jurisdiction over all disputes which may arise with respect to the execution, interpretation and performance of this Agreement.

Victor Company of Japan, Limited

### **NOTE:**

If You acquired the Program in Germany, the provisions of Sections 4 (Limited Warranty) and 5 (Limited Liability) provided above will be replaced with those of the German version of this Agreement.

**CAUTION:**

- Operate this equipment according to the operating procedures described in this manual.
- Use only the provided CD-ROM. Never use any other CD-ROM to run this software.
- Do not attempt to modify this software.
- Changes or modifications not approved by JVC could void user's authority to operate the equipment.

**How to handle a CD-ROM**

- Take care not to soil or scratch the mirror surface (opposite to the printed surface). Do not write anything or put a sticker on either the front or back surface. If the CD-ROM gets dirty, gently wipe it with a soft cloth outward from the centre hole.
- Do not use conventional disc cleaners or cleaning spray.
- Do not bend the CD-ROM or touch its mirror surface.
- Do not store your CD-ROM in a dusty, hot or humid environment. Keep it away from direct sunlight.

**You can find the latest information (in English) on the provided software program at our world wide web server at <http://www.jvc-victor.co.jp/english/index-e.html>**

**Notice for Users**

Use of this software is authorised according to the terms of the software license. When contacting the nearest JVC office or agency in your country about this software (refer to the JVC Worldwide Service Network at <http://www.jvc-victor.co.jp/english/worldmap/index-e.html>), please fill out the following and have the appropriate information ready.

Product Name		
Model		
Problem		
Error Message		
PC	Manufacturer	
	Model	<input type="checkbox"/> Desktop <input type="checkbox"/> Laptop
	CPU	
	OS	
	Memory	MB
	Available Hard Disk Space	MB

Please note that it may take some time to respond to your questions, depending on their subject matter.

**JVC cannot answer questions regarding basic operation of your PC, or questions regarding specifications or performance of the OS, other applications or drivers.**

# System Requirements

## ■ Windows®

The following requirements must be satisfied to connect a camcorder to a PC and to use Digital Photo Navigator.

**OS:** Windows® Millennium Edition (Me) (pre-installed), Windows® 2000 Professional (2000) (pre-installed), Windows® XP Home Edition (XP) (pre-installed), or Windows® XP Professional (XP) (pre-installed)

**CPU:** Intel® MMX™ Pentium®, at least 200 MHz

**RAM:** At least 64 MB

**Free hard disk space:** At least 10 MB for installation, at least 500 MB recommended

**Connector:** USB connector

**Display:** Must be capable of displaying 800 x 600 dots with 16-bit colour

**Miscellaneous:** Internet Explorer 5.5 or later

## ■ Macintosh

The following requirements must be satisfied to connect a camcorder to a PC.

**Hardware:** iMac, iBook, Power Mac G4 or G5, PowerBook G3 or G4, eMac, Mac Mini equipped with a USB connector

**OS:** Mac OS X (10.1.5, 10.2.1 to 10.2.8, 10.3.1 to 10.3.9, 10.4.2, 10.4.3)

**RAM:** At least 128 MB

- The system requirements information above is not a guarantee that the provided software will work on all personal computers meeting those requirements.
- If your PC does not meet the system requirements above, you can use the optional USB reader/writer CU-VUSD70, the PC card adapter CU-VPD60 or the floppy disk adapter CU-VFSD50 to load the files in the memory card to the hard disk on your PC.  
(Refer to “JVC Accessories” on our world web site at: <http://www.jvc-victor.co.jp/english/accessory/>)
- Windows® are either registered trademarks or trademarks of Microsoft

Corporation in the United States and/or other countries.

- Macintosh is a registered trademark of Apple Computer, Inc.
- Other product and company names included in this instruction manual are trademarks and/or registered trademarks of their respective holders.

# Software Installation (Windows®)

Follow the procedure described below to install the software. Quit any other software you are using. (Check that there are no other application icons on the status bar.)

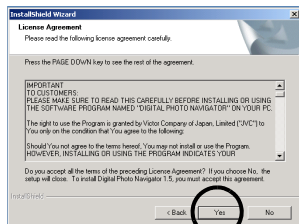
## Digital Photo Navigator 1.5

This application is used to organise still images and convert them into a variety of formats.

- 1 Load the provided CD-ROM into the PC.
- 2 Follow the on screen instructions to complete the installation.

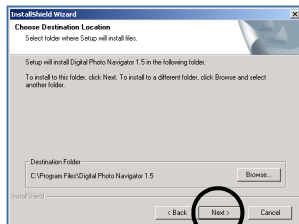
Following steps are the example of Digital Photo Navigator on Windows® Me.

[License Agreement] screen appears.



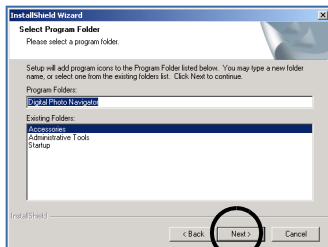
Click [Yes].

Then, [Choose Destination Location] screen appears.



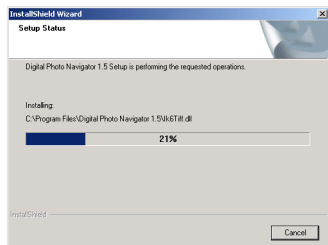
Click [Next].

Then, [Select Program Folder] screen appears.



Click [Next].

[Setup Status] screen appears. Wait for a moment until the installation is finished.



When the installation is finished, [Digital Photo Navigator Setup] screen appears and asks you if you want to create the icon on the desktop.



If you need it, click [Yes]. If not, click [No].

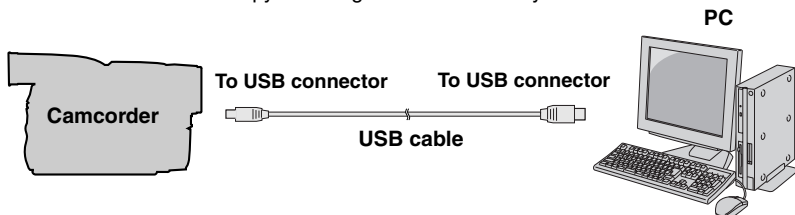
## NOTE:

If you perform installation of a software that is already installed, uninstallation will start. In this case, perform the installation again after uninstallation is finished.

# Connecting (Windows®)

## Connecting the USB cable

Connect the USB cable to copy still image files in a memory card to the PC.



- 1** To assure safety, make sure all units are turned off before making any connections.
- 2** Use the USB cable to connect the camcorder to the PC.

### NOTES:

- It is recommended to use the AC Adapter as the power supply instead of the battery pack.
- When the USB cable is connected, turning on or off the camcorder or switching the VIDEO/MEMORY (DSC) mode on the camcorder causes malfunctions of the PC.
- If you connect the camcorder to the PC through a USB hub, compatibility issues between the hub and the PC may result in instability in the operation of the PC. If this happens, connect the camcorder directly to the PC, not through the hub.
- Do not use an extension USB cable.



# Viewing the Contents of a Memory Card (Windows®)

- 1 Make sure that there is a memory card in the camcorder.
- 2 Set the camcorder's VIDEO/MEMORY Switch to "MEMORY".
- 3 Set the camcorder's Power Switch to "PLAY" while pressing down the Lock Button located on the switch.  
The camcorder turns on.
- 4 Connect the camcorder to the PC with a USB cable. (pg. 8)  
On the camcorder's LCD monitor [USB] appears.

## 5 When using Windows® XP:

The [Removable Disk] window appears on the PC's screen after a moment. Select [Open folders to view files using Windows Explorer] and click [OK].

### NOTE:

If the [Removable Disk] window does not appear, confirm the connection (pg. 8) or perform the steps 1 and 2 in the right.

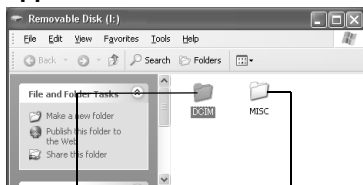
## When using Windows® Me/2000:

- 1 Double-click the [My Computer] icon on the desktop. The [Removable Disk] icon which represents the memory card appears in the [My Computer] window.



- 2 Double-click the [Removable Disk] icon.

## 6 The folders in the memory card appear.



Still images

DPOF setting data

Different file types are stored in different folders.

**[DCIM]:** Contains folders with still images (extension ".jpg")

**[MISC]:** Contains folders with DPOF setting data

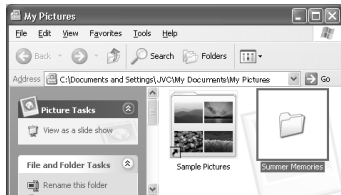
## NOTES:

- Saving the wrong kinds of files in a memory card or deleting files or folders from a memory card can cause problems with the operation of the camcorder. When it is necessary to delete a file from a memory card, delete it through the camcorder.
- Never disconnect the USB cable while "◀ ▶" is displayed on the camcorder's LCD monitor.
- If you are using a brand new memory card, you need to initialise the memory card with the camcorder first. You may not be able to copy files from the memory card to the PC without doing so.
- The file extension may not appear depending on the [FOLDER] option setting of Windows®.

## Copying Files to the PC (Windows®)

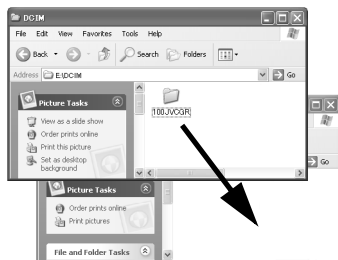
Still image files that are stored in a memory card can be copied to the PC and played back on the PC.

- 1 Perform the procedure in “Viewing the Contents of a Memory Card (Windows®)” (pg. 9).**



The folders in the memory card appear.

- 2 Create a new folder, enter the folder name, and then double-click it.**
  - For example, create a new folder in the [My Pictures] folder.
- 3 Select the folder to be copied, and then drag and drop that folder in the destination folder.**



- To copy still images: Copy the folder within the [DCIM] folder.

“ ← → ” appears on the LCD monitor of the camcorder, and the folder is copied from the memory card to the PC.

### NOTE:

Never disconnect the USB cable while “ ← → ” is displayed on the camcorder's LCD monitor.


## Playing Back Files on the PC (Windows®)


### Still Images

Use an application that can handle the JPEG file format. To view a still image, double-click the still image file (extension “.jpg”).

# Disconnecting the USB cable (Windows®)

Before loading or unloading memory cards or turning off the PC, first disconnect the USB cable and turn off the camcorder.

- 1 Confirm that “” is not currently displayed on the LCD monitor of the camcorder.

- If “” is currently displayed, wait until it disappears before proceeding.

- 2 Double-click the  [Safely Remove Hardware] or [Unplug or Eject Hardware] icon in the status bar.



The [Safely Remove Hardware] or [Unplug or Eject Hardware] dialogue box appears.

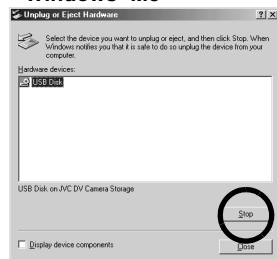
**Windows® XP:** If not, wait a while then go to step 5.

- 3 Select [USB Mass Storage Device] or [USB Disk], and then click [Stop].

## • Windows® 2000/XP



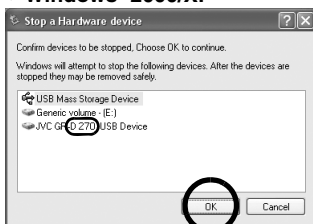
## • Windows® Me



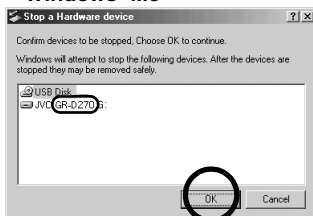
The [Stop a Hardware device] dialogue box appears.

- 4 Click [OK].  
**Windows® 2000/Me:** If a message indicating that the device can be safely removed appears, click [OK] and then click [Close].

## • Windows® 2000/XP



## • Windows® Me



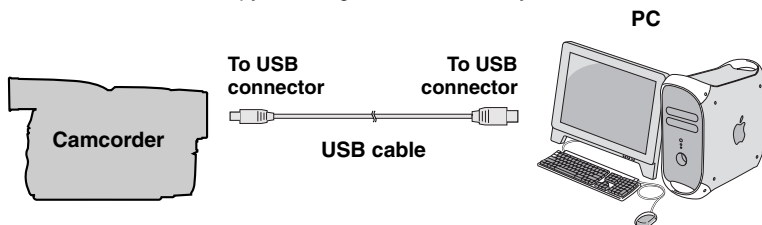
\*The model name depends on the connected camcorder.

- 5 Disconnect the USB cable.
- 6 Set the camcorder's Power Switch to “OFF”.

The camcorder turns off.

## Connections (Macintosh)

Connect the USB cable to copy still image files in a memory card to the PC.



- 1 To assure safety, make sure all units are turned off before making any connections.**
- 2 Use the USB cable to connect the camcorder to the PC.**

### NOTES:

- It is recommended to use the AC Adapter as the power supply instead of the battery pack.
- When the USB cable is connected, turning on or off the camcorder or switching the VIDEO/MEMORY (DSC) mode on the camcorder causes malfunctions of the PC.
- If you connect the camcorder to the PC through a USB hub, compatibility issues between the hub and the PC may result in instability in the operation of the PC. If this happens, connect the camcorder directly to the PC, not through the hub.
- Do not use an extension USB cable.

## Viewing the Contents of a Memory Card (Macintosh)

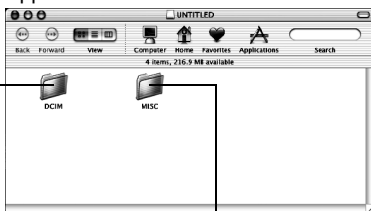
- 1 Make sure that there is a memory card in the camcorder.**
- 2 Set the camcorder's VIDEO/MEMORY Switch to "MEMORY".**
- 3 Set the camcorder's Power Switch to "PLAY" while pressing down the Lock Button located on the switch.**
- 4 Connect the camcorder to the PC with a USB cable. (pg. 12)**

On the camcorder's LCD monitor [USB] appears. The memory card icon appears on the desktop.

- Depending on the type of OS used, iPhoto starts if the memory card contains a DCIM folder.

- 5 Double-click the memory card icon on the desktop.**

The folders in the memory card appear.



Still images

DPOF Setting data

Different file types are stored in different folders.

**[DCIM]:** Contains folders with still images (extension ".jpg")

**[MISC]:** Contains folders with DPOF setting data

### NOTES:

- Saving the wrong kinds of files in a memory card or deleting files or folders from a memory card can cause problems with the operation of the camcorder. When it is necessary to delete a file from a memory card, delete it through the camcorder.
- Never disconnect the USB cable while "⏪ ⏮ ⏭ ⏩" is displayed on the camcorder's LCD monitor.
- If you are using a brand new memory card, you need to initialise the memory card with the camcorder first. You may not be able to copy files from the memory card to the PC without doing so.



## Disconnecting the USB cable (Macintosh)

Before loading or unloading memory cards or turning off the PC, first disconnect the USB cable and turn off the camcorder.

### 1 Drop the memory card icon on the desktop into the [Trash] icon.

- If the confirmation message appears, click [OK].

### 2 Confirm that “◀▶▶▶” is not currently displayed on the LCD monitor of the camcorder.

- If “◀▶▶▶” is currently displayed, wait until it disappears before proceeding.

### 3 Disconnect the USB cable.

### 4 Set the camcorder's Power Switch to “OFF”.

The camcorder turns off.



## User's Guide/Help/Readme (Windows®)

This manual only refers to software installation and PC connection. For more details of each software, refer to its user's guide/help/Readme.

### ■ Digital Photo Navigator

- The instruction manual is included on the CD-ROM in PDF format. Right-click the CD-ROM icon in [My Computer], then click [Open]. Double-click the [Docs] folder. Open the “Start.pdf” file and click the button of the desired language. Note that Adobe® Acrobat® Reader™ or Adobe® Reader® must be installed to read PDF files.
- Adobe® Reader® can be loaded from Adobe's web site: <http://www.adobe.com/>

**EN**

**SOFTWARE INSTALLATION  
AND USB CONNECTION  
GUIDE**

---

**JVC**