
Guide to HyperDuo Plus Technology

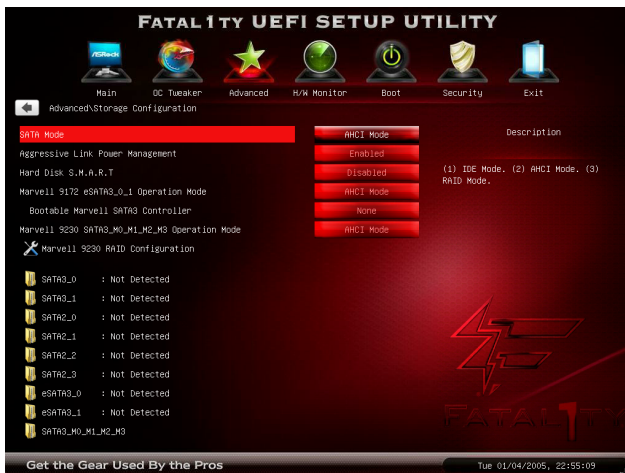
- 1. Introduction of HyperDuo Plus Technology2
- 2. Quick Guide for HyperDuo Plus Technology3

1. Introduction of HyperDuo Plus Technology

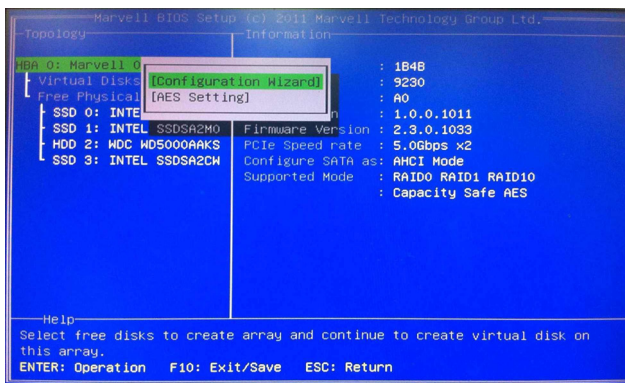
Get 14 times faster performance! While a SSD and a HDD are connected, HyperDuo Plus™ makes the SSD become the cache of the HDD and delivers SSD like performance.

2. Quick Guide for HyperDuo Plus Technology

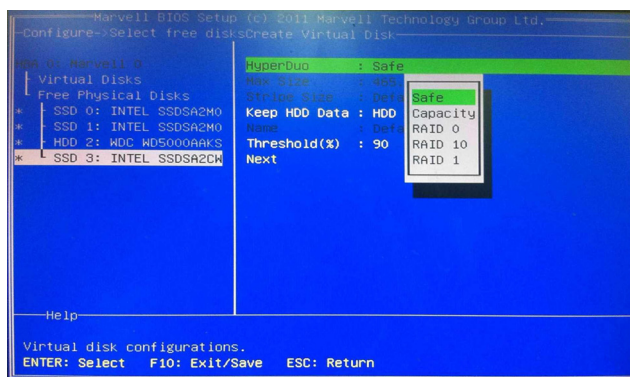
1. Run “Marvell 9320 RAID Configuration” from UEFI SETUP UTILITY → Advanced → Storage Configuration.



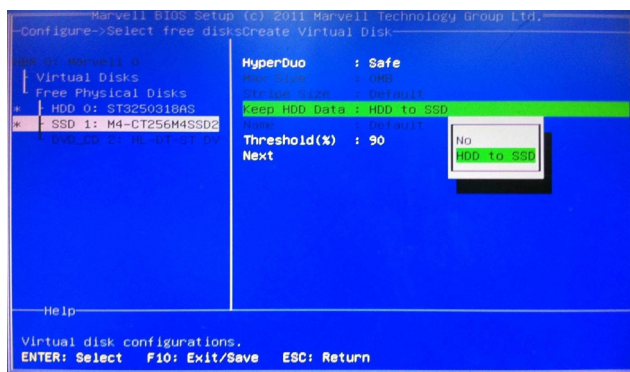
2. Click “Enter” and choose “Configuration Wizard” to manage your disks.



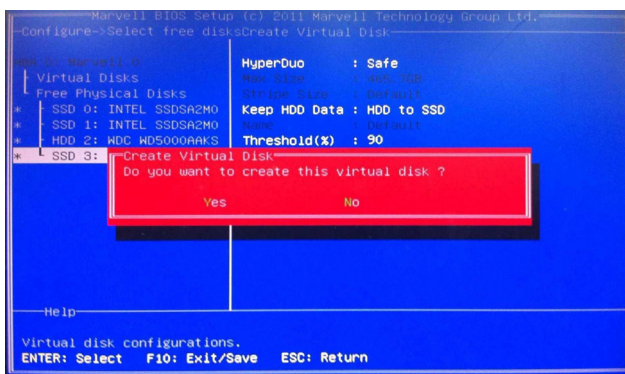
3. Select the disks by using the directional keys and space.
(A * will appear in front of the disks that are selected.)
Then choose the type of HyperDuo Plus desired.



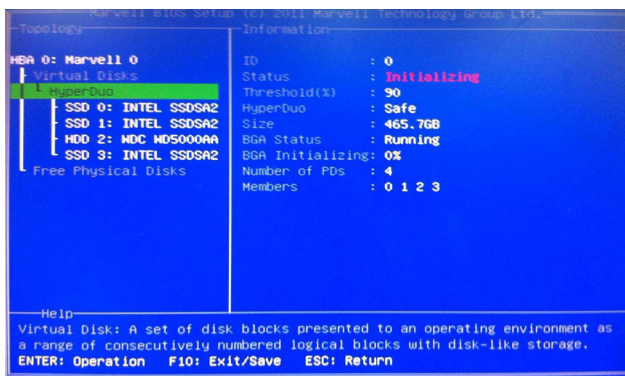
4. Under “Safe” mode you may keep your HDD’s data by setting “Keep HDD Data” to its default option “HDD to SSD”. ***If you set the option to “No” or use “Capacity” mode, the files on both your SSDs and HDDs are erased.***



5. Configure the maximum percentage of SSD usage in “Threshold(%)”. The default value is “90” (The performance may droop if the SSD is fully loaded). Then press “Yes” to continue on creating the virtual disk.



6. If you are using “Safe” mode and wish to keep the files on your HDDs, you will need to wait for the initializing process to finish, or you may reboot and enter into the OS while the initializing process runs in the background by itself. The initializing process will be skipped if you've selected “Capacity” mode or set “Keep HDD Data” to “No”.



7. Once the Status turns into “Functional”, you may start experiencing HyperDuo Plus.

