

## Additional Information

### Specifications

#### System

Frequency range: 2.400~2.483GHz (16 channels and 65535 ID per channel)

Remote range: Approx. 66 feet (20 meters) line of sight

Operating voltage: 2.6V~3.3V

Power: One CR2032 lithium battery (3V)

Output power: Under 1mW

Very low power consumption: Normal operation <5mA, Laser operation < 20mA, Sleep <10uA

#### Physical Dimensions

Size: Transmitter: 66(l) x 40(w) x 14(h) mm ; Receiver: 33.6(l) x 16(w) x 3.5(h) mm

Weight(Approx.): Transmitter: 24. grams (include battery) ; Receiver: 1.6 grams

#### Environmental Requirements

Temperature: Operating: 0°C (32°F)~60°C (140°F) Non-operating: -10°C(14°F)~65°C(149°F)

Humidity(non-condensing): Operating: 10%~85% RH Non-operating: 10%~95%RH

Laser: Semiconductor laser ( $\lambda = 650 \text{ nm}$ ), emission duration: continuous

Laser output power: Max. 0.95mW

**Note:** Design and specifications are subject to change without notice.

## Appendix A Regulatory Compliance

### FEDERAL COMMUNICATIONS COMMISSION

This device complies with Part 15 of the FCC Rules. Operation is subject to the following two conditions: (1) this device may not cause harmful interference, and (2) this device must accept any interference received, including interference that may cause undesired operation.

This equipment has been tested and found to comply with the limits for a Class B digital device, pursuant to Part 15 of the FCC Rules. These limits are designed to provide reasonable protection against harmful interference in a residential installation. This equipment generates, uses and can radiated radio frequency energy and, if not installed and used in accordance with the instructions, may cause harmful interference to radio communications. However, there is no guarantee that interference will not occur in a particular installation. If this equipment does cause harmful interference to radio or television reception, which can be determined by turning the equipment off and on, the user is encouraged to try to correct the interference by one or more of the following measures:

- Reorient or relocate the receiving antenna.
- Increase the separation between the equipment and receiver.
- Connect the equipment into an outlet on a circuit different from that to which the receiver is connected.
- Consult the dealer or an experienced radio/TV technician for help.

Changes or modifications not expressly approved by the party responsible for compliance could void the user's authority to operate the equipment.

**This device and its antenna(s) must not be co-located or operating in conjunction with any other antenna or transmitter.**

Patent Pending



# Honeywell

13475 Danielson Street, Suite 120  
Poway, California 92064

Tel: 858-513-6391 Fax: 858-513-9352

E-mail : [info@powerremote.com](mailto:info@powerremote.com)

Copyright 2008 Honeywell International Inc.

[www.powerremote.com](http://www.powerremote.com)

Doc No.: EB-B8010-201

# Honeywell

## MINI POWER PRESENTER

### User Manual

Please read this User Manual carefully to familiarize yourself with the proper operation of your new Honeywell Mini Power Presenter and keep these instructions for future reference.

Information in this document is subject to change without notice. No part of this document may be reproduced or transmitted in any form or by any means, electronic or mechanical, for any purpose, without the express written prior permission of the Honeywell International Inc.

The manufacturer provides this document without warranty, or condition of any kind. The manufacturer may make improvements or changes to the product described in this documentation at any time.

Other product and company names herein may be the trademarks of their respective owners.

## IMPORTANT SAFETY AND HEALTH INFORMATION

### WARNING! RISK OF INJURY!

Laser light can cause permanent damage to eyes. Do not look into the laser beam or shine the laser beam into your eyes, other people's eyes, or pet's eyes.

Keep this device away from Children. This is a working tool, not a toy or entertainment device. It should only be used by adults.

#### CAUTION



LASER RADIATION-DO NOT STARE INTO BEAM  
MAX OUTPUT:1mW  
WAVE LENGTH:650±20nm  
CLASS II LASER PRODUCT  
This product complies with 21 CFR.

## Introduction

### Benefits

#### Easily control the pace of your presentation

With the Honeywell's Mini Power Presenter, there is no need to stand beside your computer or have an additional person click the slides for you, nor do you need to aim the remote at the Radio Frequency receiver.

#### Slim, compact and easy to carry

Honeywell's Mini Power Presenter is a specially designed presentation tool, its USB dongle is designed small enough to snap into and store in the main body.

#### Multi-function

Honeywell's Mini Power Presenter is a combination of RF wireless control for PowerPoint and other presentation software providing keyboard shortcuts and a laser pointer. The device enables the user to control presentation slides wirelessly up to 66 feet (20 meters) away line of sight.

#### Easy to use

Honeywell's Mini Power Presenter is a USB plug-and-play device with no additional software required.

## Equipment Checklist

Carefully unpack your Mini Power Presenter, and keep the packing materials for future reference. Check to make sure that the following items are included:

- Honeywell Mini Power Presenter (with USB receiver) 1
- CR2032 lithium cell battery 1
- User's Manual 1

## System Requirements

It is recommended to install this wireless presenter under one of the following Operating Systems

- Windows 2000, XP, Windows Vista™ ; presentation software: PowerPoint 2000 or later
- Mac OS X (10.3) or later ; presentation software: PowerPoint v. X for Mac OS X or later

## Product Features

### Parts Description

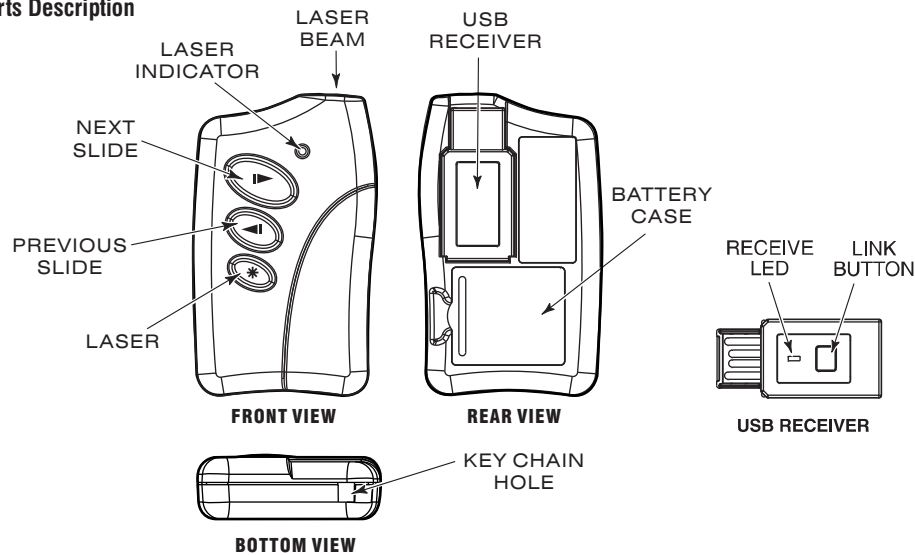


Figure 1

### Removing and Storing the Receiver

**Note:** Improper removal and insertion may damage the receiver, please follow the diagram below.

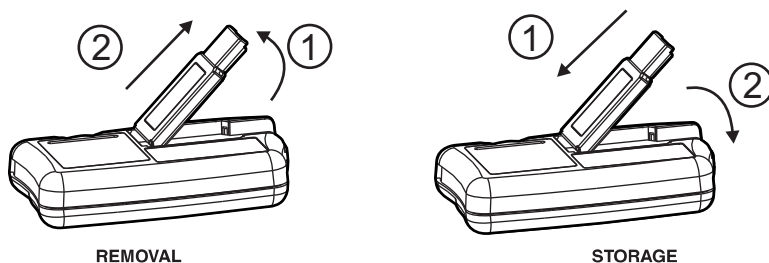


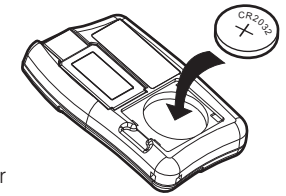
Figure 2

## Getting Started

### Initial setup for the Mini Power Presenter

#### Step 1: Battery Storage -

Open the battery cover and insert the battery CR2032 with (+) side up into the battery compartment in back of Presenter.



#### Step 2: Linking the Receiver -

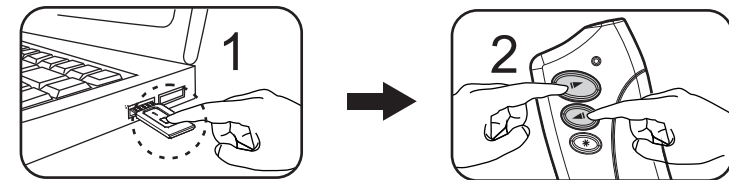
Remove the receiver and plug it into an available USB port on your computer. (Refer to Figure 2), the Presenter is ready to use.

### Using the Link Option

Step 1. Press the link key on the receiver (connected to your computer now), and the LED light on the receiver will come on. (Refer to Figure 1)

Step 2. Press "◀" button and "▶" button on the Presenter simultaneously for more than three seconds. The LED on the receiver will start flashing to confirm the link is complete. The Mini Power Presenter is now ready for use.

**Note:** Whenever you change new battery, it is recommended that you repeat the Link process again.



### Using the Mini Power Presenter

Buttons	Functions	How to operate
✱	Laser	Press to emit the laser beam.
▶	Next	Click to advance to the next slide.
◀	1.Previous 2.Dark Screen	1.Click to return to the previous slide. 2.Press and hold the key for over three seconds the PowerPoint screen will change to black.
◀ + ▶	ID Link	Link the ID with the receiver. <b>Note:</b> Implement ID change ONLY when serious RF interference causes the remote control malfunction.

### Care and Maintenance

- For cleaning, you are advised to use a soft, slightly moistened cloth.
- Avoid using solvents or abrasive substances.
- Do not open the presenter for any maintenance.