



Hisense

User Guide

.....

Solar Bluetooth Handsfree Car Kit

With Text-to-Speech System

MODEL: HB650S



Table of Contents

Thank You	3
Safety Guidelines	3-5
Introducing the HB650S	6
What Your Speaker Can Do	7
Specifications	8
Chargeing Your Speaker	8
Charging with the Solar Panel	9
RECOMANDED INSTALLATION POSITION	10
GETTING STARTED	11
Pairing with Your Phone	11-12
Answer a Call	13
End a Call	13
Make a Call	13
Reject a Call*	13
Activate Voice Dialing*	13
Redial Last Number*	13
Adjust Sound and Volume	13
Call Waiting and Placing a Call on Hold*	14
Reject Call Waiting	14
Mute Function	14
Privacy Mode	14
Call Transfer from Speaker to Mobile Phone	14
Text-to-Speech Language Options	14
Turning On/Off the Text-to-Speech Function	15
Transferring Mobile Phone's Phonebook to speaker (*Handset Dependent)	15
Deleting Phonebook Entries	16
What the Lights mean	17
Restore Factory Settings	18
Taking Care of Your Speaker	19
Glossary	19-20

Thank You

Thank you for purchasing the Hisense HB650S Bluetooth® Speaker. We hope you enjoy it! This instruction manual will get you started and ready to make the most of your speaker.

WARNING!

Speakerphones are capable of delivering sounds at loud volumes and high pitched tones. Exposure to such sounds can result in permanent hearing loss damage. The volume level may vary based on conditions such as the phone you are using, its reception and volume settings, and the environment. Please read the safety guidelines below prior to using this Speaker.

Safety guidelines

Prior to using this product follow these steps:

1. Before using the speakerphone, turn the volume control to its lowest level, use the speakerphone in conversation, and then slowly adjust the volume control to a comfortable level.
2. During the use of this product:
Keep the volume at the lowest level possible and avoid using the speakerphone in noisy environments where you may be inclined to turn up the volume; If increased volume is necessary, adjust the volume control slowly; and if you experience any discomfort

or ringing in your ears, immediately discontinue use and consult a physician.

With continued use at high volume, your ears may become accustomed to the sound level, which may result in permanent damage to your hearing without any noticeable discomfort.

3. Drive Safely

Several studies have shown that cell phone usage while driving creates a distraction to the driver which may increase the likelihood of an accident. This distraction potential is not eliminated by the use of a handsfree phone. Handsfree phones have not been shown to be safer than hand-held phones with respect to driver distraction. When using the phone while driving, keep conversations short and resist any temptation to make notes or read documents. Before answering calls consider your circumstances. Pull off the road and park before making or answering calls when driving conditions require (e.g. bad weather, high traffic density, presence of children in the car, difficult junctions or maneuvers)

REMEMBER; DRIVING COMES FIRST, NOT THE CALL!

4. Abide by Local Laws.

Please check if the local laws where you live restrict the use of mobile phones while driving. It is the owner's responsibility to use this product in compliance with the laws of the place where you live.

WARNING!

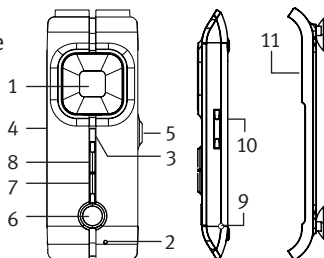
Keep out of reach of children: The plastic bags the product and its parts are wrapped in are not toys for children. The bags themselves or the many small parts they contain may cause choking if ingested.

WARNING!

Ignition of flammable atmospheres: Do not use the Speaker in environments where there is a danger of ignition of flammable gases.

Introducing the HB650S

1. Speaker
2. Microphone
3. LED Light
4. Charging Socket
5. Mode Button (privacy and mute)
6. Multi-Function Button (MFB)
 - Pairing Button – When speaker is turned off press and hold for 10 sec to put Speaker into pairing mode
 - Answer/End Button
 - Press for 4 seconds to turn speaker on (blue lights flash 5 times)
 - Press and hold for 4 seconds to turn speaker off (red light flash 5 times and then power off)
7. Volume (+)
8. Volume (-)
9. External Microphone
10. Solar Panel
11. Windshield Mount



What Your Speaker Can Do

The HB650S is compatible with most Bluetooth mobile phones. It is equipped with Text-to-Speech system and phonebook synchronization option. The Text-to-Speech system announces instructions for the users in 5 different languages and also indicates the status of the Bluetooth device. It also announces the name of the incoming caller (or phone number if the contact is not loaded into the Speaker phonebook).

In addition your Hisense HB650S lets you do all this

- Answer Calls
 - End Calls
 - Reject Calls*
 - Voice Dialing*
 - Last Number Redialing*
 - Call Waiting*
 - Mute Conversation
 - Put Call on Hold*
- * Phone Dependent

Specifications

- Up to 11 hours talk time/standby time up to 400 hours
- Rechargeable batteries with charging option from AC power supply and car power outlet or using the internal solar panel.
- Charging time: using AC adaptor approximately 3 hours
- Using the solar panel: approximately 10 hours
- Operating range up to 10 meters (approx. 33 feet)
- Headset and handsfree Bluetooth profiles
- Support up to 8 Bluetooth devices
- Bluetooth specification (see glossary) version 2.1+EDR
- Text-to-Speech languages: English, French, Italian, German, Spanish
- Integrated phonebook: Stores up to 1000 contacts

Charging Your Speaker

Make sure that your Hisense HB650S speaker is fully charged before first use (normal charging time is approximately 3 hours). Use the AC adaptor to charge from a power socket, or charge directly from your car power outlet using the charging cable provided. After connecting to the power source, the red LED will flash while charging. After charging ends the red LED will turn off.

Notice: before first use, or if you have not use the speaker for long time, please charge the speaker using the AC adaptor for approximately 3.5 hours.

Charging with the Solar Panel

Direct the solar panel on the backside of the speaker-phone toward sun. (Please refer to the recommended installation position, as mentioned in page 10.

If the speakerphone receives sufficient sunlight for 2 hours, you can talk for duration of up to 1 hour. Using solar power charge, the operation time (the talk time and the standby time) will extend continuously without any additional charge required by the car charger.

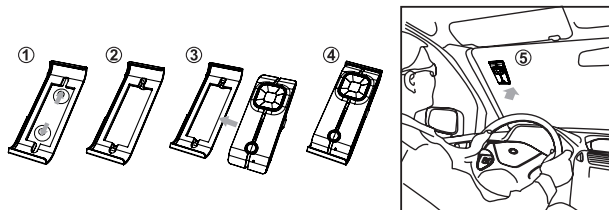
Auto Power Off

if the speaker is turned on but not connected to a Bluetooth device for more than 10 minutes, the speaker will automatically turn off.

RECOMANDED INSTALLATION POSITION

It is recommended that the speakerphone is positioned on to the top of the left side of the windshield as shown in the pictures below:

1. Press the vacuum cushions located on the bottom of the windshield mount towards the window.
2. Make sure that the windshield mount is attached securely to the window.
3. Slide the speaker into the windshield mount
4. Done - The speaker is installed



WARNING: Do not place or store the speakerphone over the area of the automobiles safety airbag deployment, or it may cause serious injury when a safety airbag deploys.

GETTING STARTED

The Hisense HB650S is easy to operate.

Turning Your Speaker On and Off

To turn on your Speaker, press and hold the MFB for 4 seconds, the blue light will turn on and a “Power On” announcement will be heard.

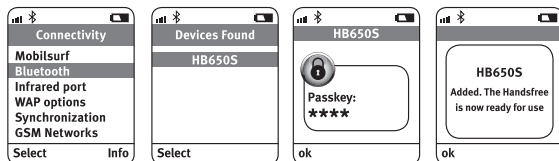
To turn off your Speaker, press and hold the MFB for 4 seconds. the blue light will turn off and a “Power Off” announcement will be heard.

Pairing with Your Phone

Before you use your Hisense HB650S, you need to pair it with your mobile phone.

1. Make sure that the HB650S is turned off
2. Press and hold the MFB for 6 sec. until LED flash red and blue alternatively.
3. Activate Bluetooth function of the mobile phone to search for Bluetooth devices (please refer to the phone’s manual).

4. Set your Bluetooth phone to 'discover' the Hisense HB650S.
Follow your phone's instruction guide. This usually involves going to a 'setup,' 'connect' or 'Bluetooth' menu on your phone and selecting the option to 'discover' or 'add' a Bluetooth device. * (See example from a typical mobile phone).



5. Your phone will find the Hisense HB650S.
6. Your phone will then ask if you want to pair with it. Accept by pressing 'Yes' or 'OK' on the phone and confirm with the passkey or PIN = 0000 (4 zeros). Your phone will confirm when pairing is complete.

In case of unsuccessful pairing, repeat steps 1 to 6.

Note: If the pairing cannot be completed within 2 minutes after the pairing mode is activated, the speakerphone will power off automatically. Please repeat steps above to pair the speakerphone and mobile phone again.

How to...

Answer a Call

Press the MFB on your speaker to answer a call.

End a Call

Press the MFB to end an active call.

Make a Call

When you make a call from your mobile phone, the call will (subject to phone settings) automatically transfer to your speaker. If your phone does not allow this feature, tap on the Hisense HB650S MFB to transfer the call to the speaker.

Reject a Call*

Press the MFB for approximately 3 seconds when the phone rings to reject an incoming call. Depending on your phone settings, the person who called you will either be forwarded to your voice mail or hear a busy signal.

Activate Voice Dialing*

Press the MFB once. Wait for the beep and then announce the name you wish to call
For best results, record the voice-dialing tag through your speaker. Please consult your phone's user manual for more information about using this feature.

Redial Last Number*

Press the MFB twice when the speaker is turned on, and it is not in use (Standby mode).

Adjust Sound and Volume

During a call, repeatedly press the Volume (+) or Volume (-) to change the volume.

Call Waiting and Placing a Call on Hold*

This lets you put a call on hold during a conversation and answer a waiting call.

Press the MFB once to put the active call on hold and answer the waiting call.

Press the MFB for 3 seconds to switch between the two calls.
Press the MFB to end the active conversation.

Reject Call Waiting

During a conversation, press the MFB for 3 seconds in order to reject the call waiting.

Mute

Mute: During a call, press and hold the “MODE” button for 3 seconds to mute the speakerphone’s microphone.

Un-Mute: Press and hold the “MODE” button for 3 seconds again

Privacy Mode

In the middle of a conversation, press the “MODE” button once and the speaker volumes are automatically decreased to minimal level where you can use the speakerphone in the same manner as using any handheld phone

Call Transfer from Speaker to Mobile Phone

During a call, press the “MODE” button twice, and the call will be route to your mobile phone.

To transfer the call back to the speaker: Press the “MFB” button once, the call will be route to the speaker

Text-to-Speech Language Options

The speakerphone is available in 5 language options. During the standby mode, press the volume (+) button for 3 seconds until the blue LED flashes 3 times and the speakerphone will announce “Select Language”. Repeat this process to select the desired language in the following order of English, French, Italian, German and Spanish.

Turning On/Off the Text-to-Speech Function

You can turn off or on the Text-to-Speech function, while the speaker is in standby mode, simply hold the volume (+) for 6 seconds (“Voice Prompt On” or “Voice Prompt Off” will be announced).

Transferring Mobile Phone’s Phonebook to Speaker (*Handset Dependent)

In the connected status, press the “MODE” button for 3 seconds and the Blue LED light indicator comes on. This process automatically extracts the mobile phone’s phonebook memory.

When the process is completed, the speaker announces “Contacts Saved”.

The process may take a few minutes depending on the number of contacts that is being stored in the mobile phone’s memory.

NOTE: If the phonebook transfer fails, the speakerphone will announce: “Loading Phonebook Failed”. The phonebook function varies between mobile phone models, and not every mobile phone supports this feature. Please check with your supplier whether your mobile phone model support this feature. The phonebook data saved in the speakerphone will be erased automatically when it is paired with another mobile phone.

Deleting Phonebook Entries

During standby mode, Press on to both volume (+) and volume (-) buttons for 3 seconds (“Phonebook Deleted” is announced) and the entire phonebook memory in the Speakerphone will be deleted.

- Functions marked with * are dependent on your phone supporting these features.
Check your phone’s user manual for further information.

What the Lights Mean

	What you see	What does this mean about your Speaker
When connected to charger	Solid red LED	Charging
	Red LED turn off	Charging completed
When NOT connected to charger	Red and blue LED flash alternatively.	Pairing
	Blue LED flash once every 3 seconds	Stand by mode
	Blue LED flash twice every 3 seconds	Stand by mode (but no Bluetooth device connected to speaker)
	Red LED flash once every 3 seconds	Low power alert
	Blue LED flash once every 6 seconds	Call in progress
	Red LED steady on	Mute
	Blue LED flash 5 times rapidly	Power on or off

Troubleshooting

I hear crackling noises

For the best audio quality, make sure that the mobile phone is placed within 10 meter from the speaker.

I cannot hear anything in my speaker

Increase the volume on the mobile phone and in the speaker. Ensure that the speaker is paired with the phone. Make sure that the phone is connected to the speaker – if it does not; connect from the phone's Bluetooth menu.

I have pairing problems even though my phone indicates otherwise

You may have deleted your speaker pairing connection in your mobile phone.

Follow the pairing instructions in page 9.

Restore factory settings

In order to restore factory settings and delete all paired devices from the speaker, while in standby mode, press the volume (+) and volume (-) together for 10 seconds, the blue LED flash rapidly, continue pressing for 3 seconds, the speaker will turn off automatically and the announcement "Set Factory Default Completed" will be heard.

Notice: If the speakerphone is connected with a mobile phone before restoring to default setting, it will enter pairing mode automatically after restoring to default.

Taking care of your Speaker

- Always store the Hisense HB650S with the power off and safely protected.
- Avoid storage at extreme temperatures (above 45°C/113°F – including direct sunlight – or below -10°C/14°F). This can shorten battery life and may affect operation. High temperatures may also degrade performance.
- Do not expose the Hisense HB600S to rain or other liquids.

Glossary

Bluetooth

The Bluetooth® trademark and logos are owned by the Bluetooth SIG, Inc. and any use of such marks by Hisense is under license. Other trademarks and trade names are those of their respective owners.

1. **Bluetooth** is a radio technology that connects devices, such as mobile phones and speakers, without wires or cords over a short distance (approx. 30 feet). Get more information at www.bluetooth.com.
2. **Bluetooth** profiles are the different ways that Bluetooth devices communicate with other devices. Bluetooth phones support either headset profile, the handsfree profile or both. In order to support a certain

profile, a phone manufacturer must implement certain mandatory features within the phone's software.

3. **Pairing** creates a unique and encrypted link between two Bluetooth devices and lets them communicate with each other. Bluetooth devices will not work if the devices have not been paired successfully.
4. **Passkey** or **PIN** is a code that you enter on your mobile phone to pair it with your Hisense HB600. This makes your phone and the Hisense HB600 recognize each other and automatically work together.



Dispose of the product according to local standards and regulations or local laws.