

# **GigaRAID (IT8212) ATA RAID Controller**

## **USER'S MANUAL**

12ME-IT8212-006R

## **Copyright**

Copyright by GIGA-BYTE TECHNOLOGY CO., LTD. ("GBT") No part of this manual may be reproduced or transmitted in any form without the expressed, written permission of GBT.

## **Trademarks**

Third-party brands and names are the property of their respective owners.

## **Notice**

Due to rapid change in technology, some of the specifications might be out of date before publication of this booklet.

The author assumes no responsibility for any errors or omissions which may appear in this document nor does it make a commitment to update the information contained herein.

## Contents

Introduction .....	4
Features .....	5
What is the GigaRAID (IT8212) ATA RAID Controller .....	6
Quick Start .....	7
Create Your Disk Array .....	9
Setup Utility .....	15
Using the GigaRAID (IT8212) ATA RAID Controller Setup Utility .....	15
Auto Configuration .....	17
Define RAID .....	22
Delete RAID .....	28
Rebuild RAID .....	31
RAID Card Configuration .....	36
Driver Installation .....	38
Windows XP .....	39
Windows 2000 .....	45
Windows SE/ME .....	53
Windows NT .....	61
Linux .....	69
Install the GigaRAID (IT8212) ATA RAID Controller on Red Hat 7.3 .....	69
Application .....	72
Installation .....	72
Functions Description .....	75
How to .....	86
Q&A .....	88

## Introduction

This manual is mainly to help users setup the GigaRAID (IT8212) ATA RAID Controller and solve problems when they use it.

If it is your first time to use the GigaRAID (IT8212) ATA RAID Controller and you are about to install it, please refer to the “**Quick Start**” section on page 7. After finishing installing it, you can get the advantages of enhancing the performance and raising the system's reliability.

When you face any difficulties and find anything you don't understand while using the GigaRAID (IT8212) ATA RAID Controller, please refer to the “**Q&A**” section on page 88. In this section, you can refer to the problems users may face and find the correct solutions. You can follow its instructions to solve your problems and then you will get satisfactory results.

## Features

- Compatible with the ATA133 specification and supports two IDE channels with 4 drives.
- Supports ANSI ATA proposal PIO modes 0,1,2,3,4 with flow control, DMA Modes 0,1,2,3,4,5,6.
- 512 bytes FIFO for auto transfer per IDE channel to get a high performance
- Supports the RAID 0/1/0+1 function
- Supports the JBOD function
- Supports the Scatter/Gather function for the DMA/UDMA function
- Includes one embedded CPU and firmware on system to handle the RAID function. It can reduce the driver's loading of system CPU and improve the system's ability.
- Low CPU utilization based on a local processor architecture
- Compatible with PCI Local bus specification v2.2. Users can easily install our systems to your PCs.
- Supports PCI power Management v1.0 to reduce power consumption.
- Supports the drivers for windows 98SE/Me/XP, Windows NT 4.0, Windows 2000 and Linux v2,4,1,0

## **What is the GigaRAID (IT8212) ATA RAID Controller**

This GigaRAID (IT8212) ATA RAID Controller is an excellent product resulting from Soc concept. It includes one RAID Chip combining CPU, firmware, advanced PCI controller and IDE controller. Its architecture can provide users a RAID system with low CPU utilization. When a PC is in high CPU operation or PCI traffic, users won't have any penalties for installing RAID system. This is because this system embeds a local CPU to deal with the RAID function and it's unnecessary to share CPU's performance. It is entirely different from the traditional software RAID system. Similarly, it also provides users more system stability. It provides users high speed and integration and low price PC RAID system. Additionally, it also provides PCI 33MHz interface and is compatible with PCI spec. v2.2. It can be easily installed into the PC system nowadays. Besides, we provide each OS a corresponding driver so that users don't have to worry that your systems and the IDE RAID system have any compatibility issue.

This GigaRAID (IT8212) ATA RAID Controller can support IDE drivers ranging from the lowest speed of PIO mode drive to the highest speed of ATA/133 drive. Thus, users can use this characteristic to combine RAID system without any limitations. Users can use ATA/133 drive and RAID function to achieve the best performance and get the merit of system's stability.

The GigaRAID (IT8212) ATA RAID Controller can support the RAID0 (striping), RAID1 (mirroring), RAID0+1 (striping and mirroring) or JBOD (spanning) mode. When a system is programmed to the RAID0 mode, it can read or write two drivers at the same time to enhance the performance. When a system is programmed to the RAID1 mode, two drivers have the same data and it will prevent data from being damaged. Once data is damaged, the system will start the rebuild function automatically and save data back to another new drive. Similarly, this system can use

this data-copying characteristic to let two drivers transmit at the same time and balance the performance to raise throughput. The RAID0+1 mode uses four drivers to get the merits of RAID0 and RAID1. As for the JBOD mode, it combines more than two drives into a drive with a large capacity. This mode does not have the RAID function and its merit.

## Quick Start

This section leads you to quickly establish your RAID system with default settings. The default settings can meet most people's requirements. If you need more advanced optimal, please refer to **Setup Utility** on page 15 to achieve your goal.



***Warning: In order to prevent any data loss resulting from inappropriate operation, please backup data before you start to install your system.***

The hard drives which are required for the installation

The hard drives, which are connected on the GigaRAID (IT8212) ATA RAID Controller, can support Ultra ATA/ 133, Ultra ATA/ 100, Ultra ATA/ 66, Ultra ATA/33, EIDE or Fast ATA-2 drives. Nevertheless, for the best performance, it is suggested that you had better use the hard drives of the same type and capacity to establish your own RAID system. After getting ready for the hard drives, you can follow the procedures below to install the system.

1. Exactly set up every hard drive's master and slave setting to assure that the hard drives can surely action and unnecessarily incorrect action of data access won't occur.
2. Exactly insert the hard drive's cables into the connectors on the hard drive and check if it's really firmly inserted.
3. Insert every power cable connector into the corresponding hard drive and check if it's firmly inserted in a correct direction.



***Warning: Because this system can support the hard drives of Ultra ATA/133, it is suggested that you can use the 80-wire, 40-pin cable to connect the GigaRAID (IT8212) ATA RAID Controller and hard drives in order to assure the system's ability and efficiency. If the cable is damaged after a period of time, it is also suggested to buy the cable of the same specification.***

## Create Your Disk Array

You can create your own array using the onboard BIOS utility of the GigaRAID (IT8212) ATA RAID Controller with the attached hard drives. Please follow the steps below to setup your disk array.



***Warning: Please backup data in your hard drives to prevent data damage resulting from the unfamiliarity with the operation.***

### 1. Boot your system

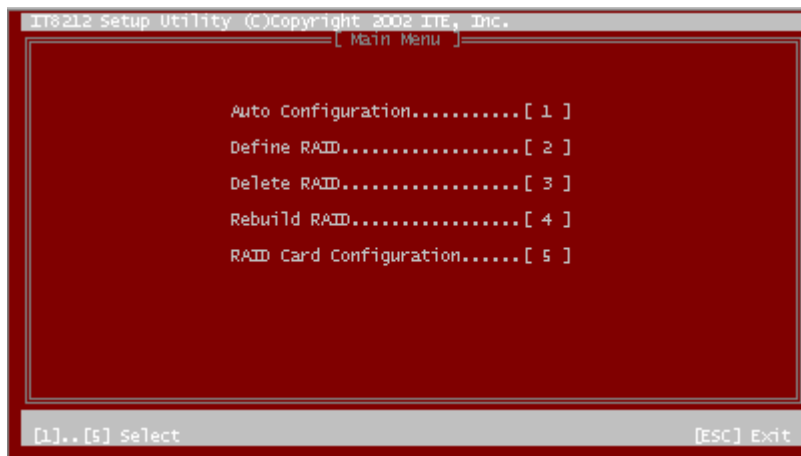
Please attach your hard drives to the GigaRAID (IT8212) ATA RAID Controller, boot your system and then you will see the following message shown by the GigaRAID (IT8212) ATA RAID Controller onboard BIOS on the screen.

```
IT8212 BIOS test Version for Gigabyte F/W Ver 02093030
Copyright 2002 ITE, Inc. All Rights Reserved

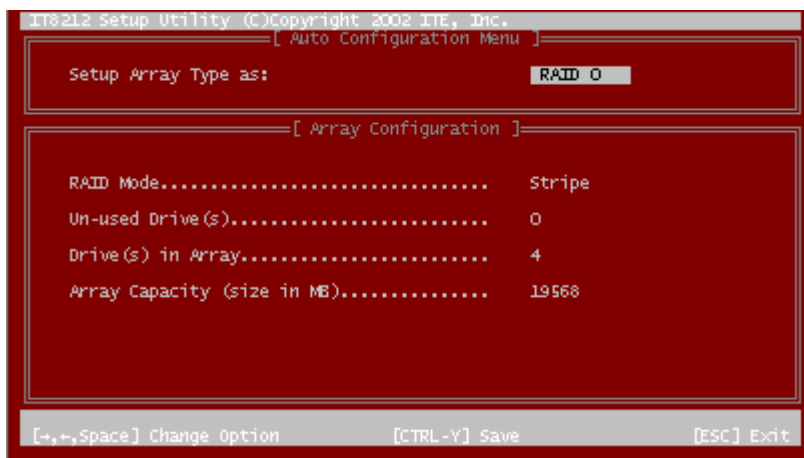
Please wait for IDE scan..

Press <Ctrl-G> to enter Setup Utility or
Press <ESC> to continue booting....
```

Please press “Ctrl-G” keys to enter the BIOS utility **Main Menu**. The screen below will be shown.



Please click "1" to enter the **Auto Configuration** window. It will guide you to set an array and this is the simplest and fastest way to create your first array. Under the **Setup Array Type as** option, you can use arrow keys → and ← and the "space" bar key to change your option to setup your array type.



Totally, there are five configurations supported:

RAID level/Type	Configurations	Number of disks needed
RAID 0	Disk Striping	2 or 3 or 4
RAID 1	Disk Mirroring	2
RAID 0+1	Disk Striping + Mirroring	4
JBOD	Disk Concatenation	2 or 3 or 4
Normal	None	1 or 2 or 3 or 4

### **Setup Array for RAID 0:**

The GigaRAID (IT8212) ATA RAID Controller allows you to use two, three or four hard drives to set a RAID 0 (stripe) array. All the hard drives attached on the controller will be set as array 0. When you create a striped array, files are broken into 64k (stripe size) and stripes are sent to each disk in the array. Selecting RAID 0 can increase data transfer rate and allow the best overall performance characteristics because of giving up redundancy.

### Setup Array for RAID 1:

The GigaRAID (IT8212) ATA RAID Controller allows two drives to be setup as a RAID 1 (mirror) array or four drives as two arrays. The first mirrored array will be set as array 0 and the second as array 1. RAID 1 is implemented as mirroring; a drive has its data duplicated on the other different drive. Selecting RAID 1 can enhance read performance and allow fault tolerance. A RAID 1 array can thoroughly backup your files to prevent data loss.



***Warning: Two hard drives that form a RAID 1 array have to be attached as the same master or slave hard disks.***

### Setup Array for RAID 0+1:

A RAID 0+1 (mirror and stripe) array has to be formed by four hard drives. RAID 0+1 is implemented as a mirrored array whose segments are RAID 0 arrays so RAID 0+1 also has fault-tolerance capacity as RAID 1. It not only enhances hard disk access performance but also backups data to prevent data loss. The formed array is automatically set as array 0.

### Setup Array for JBOD:

The GigaRAID (IT8212) ATA RAID Controller allows you to use two, three or four hard drives to form a JBOD (**J**ust a **B**unch **O**f **D**isks) array as array 0. Although JBOD doesn't offer other RAID functionality, it makes the hard disks appear to be a single one by combining the drives into one larger logical one without any capacity loss.

## Setup Array for Normal:

You can use the GigaRAID (IT8212) ATA RAID Controller as a normal IDE controller. The GigaRAID (IT8212) ATA RAID Controller allows you to use one, two, three or four hard drives. All the hard drives attached on the GigaRAID (IT8212) ATA RAID Controller are left to act as independent drive volumes.

Please follow the procedures below to set an array:

- Use the “space” bar key to select a RAID type.
- Press “Ctrl-Y” keys to save and create an array. If you select RAID 0, 1, 0+1 or JBOD, the boot sector of the new created array will be erased. If you select Normal, the boot sector will be remained.



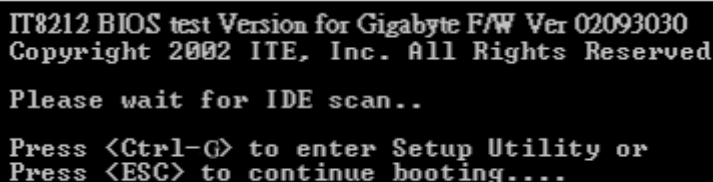
***Warning: If you prefer to keep data in your hard drives, please follow the procedures in Define RAID section on page 22 to setup your arrays manually.***

- Click the “Esc” key to go back to the **Main Menu** on page 10.
- Click the “Esc” key to quit BIOS and boot.
- You need to FDISK and format your new array. The new array will be regarded as a new hard drive by the system.

## Setup Utility

### Using the GigaRAID (IT8212) ATA RAID Controller Setup Utility

The GigaRAID (IT8212) ATA RAID Controller Setup Utility provides functions to create, delete and rebuild an array. It also provides the information of each hard drive and the configuration of the GigaRAID (IT8212) ATA RAID Controller. Please attach your hard drives to the GigaRAID (IT8212) ATA RAID Controller and boot your system. If your array's configuration is correct, you will see the following message shown by the GigaRAID (IT8212) ATA RAID Controller onboard BIOS on the screen. You can press "Ctrl-G" keys to enter Setup Utility or press the "Esc" key to skip and boot directly.

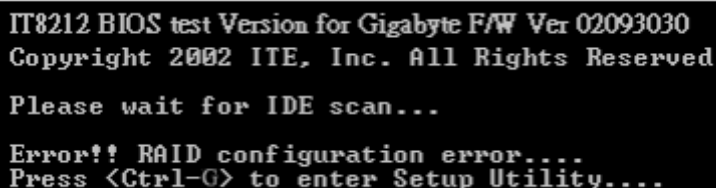


```
IT8212 BIOS test Version for Gigabyte F/W Ver 02093030
Copyright 2002 ITE, Inc. All Rights Reserved

Please wait for IDE scan..

Press <Ctrl-G> to enter Setup Utility or
Press <ESC> to continue booting....
```

If your array's configuration is incorrect, you will see an error message on your screen. You have to enter Setup Utility to reconfigure the arrays then quit utility to boot.



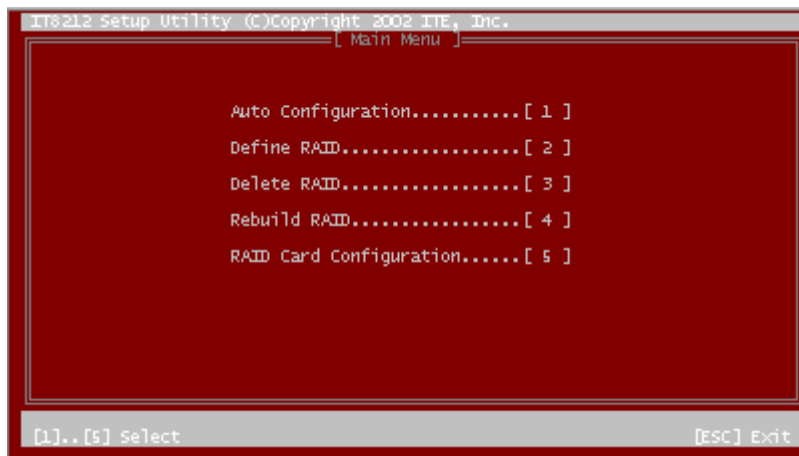
```
IT8212 BIOS test Version for Gigabyte F/W Ver 02093030
Copyright 2002 ITE, Inc. All Rights Reserved

Please wait for IDE scan...

Error!! RAID configuration error....
Press <Ctrl-G> to enter Setup Utility....
```

## GigaRAID (IT8212) ATA RAID Controller Setup Utility Main Menu

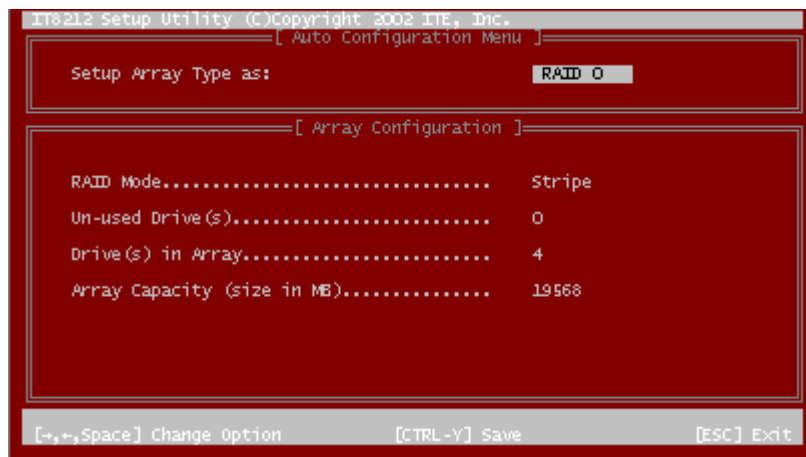
There are five options in the **Setup Utility Main Menu**, please press 1 ~ 5 to enter the submenu or the “Esc” key to quit the Setup Utility.



If you are not familiar with the array setting, please follow the procedures in **Auto Configuration** on page 17 to create new arrays automatically. You can use **Define RAID** on page 22 and **Delete RAID** on page 28 to manually create or delete arrays. You can also use **Rebuild RAID** selection on page 31 to help you rebuild a mirrored (RAID 1 or RAID 0+1) array. Besides, you can use **RAID Card Configuration** on page 36 to see the controller's resources, each hard drive's status and the setting of the GigaRAID (IT8212) ATA RAID Controller.

## Auto Configuration

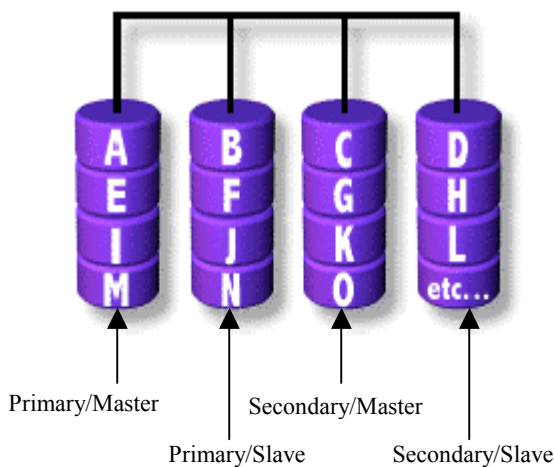
Click “1” on the **Main Menu** to enter **Auto Configuration**. You can use arrow keys → and ← and the “space” bar key to change your option. After selecting your option, you can press “Ctrl-Y” keys to save the setting and click the “Esc” key to leave **Auto Configuration menu** and go back to the **Main Menu** on page 10.



## Setup Array for RAID 0:

The GigaRAID (IT8212) ATA RAID Controller allows you to use two, three or four hard drives to set a RAID 0 (stripe) array. All the hard drives attached on the controller will be set as array 0. When you create a striped array, files are broken into 64k (stripe size) and stripes are sent to each disk in the array. Selecting RAID 0 can increase data transfer rate and allow the best overall performance characteristics because of giving up redundancy.

### RAID 0

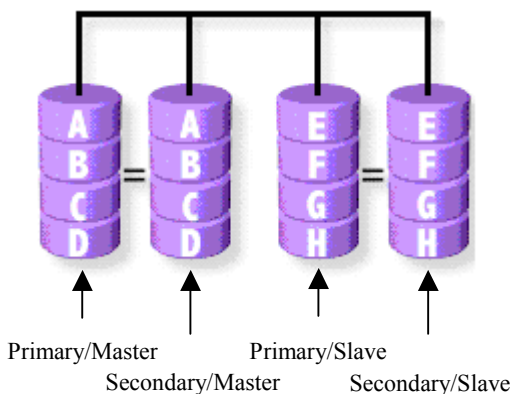


## Setup Array for RAID 1:

The GigaRAID (IT8212) ATA RAID Controller allows two drives to be setup as a RAID 1 (mirror) array or four drives as two arrays. The first mirrored array will be set as array 0 and the second as array 1. RAID 1 is implemented as mirroring; a drive has its data duplicated on the other different drive. Selecting RAID 1 can enhance read performance and allow fault tolerance. RAID 1 array can thoroughly backup your files to prevent data loss.

***Note: Two hard drives that form a RAID 1 array have to be attached as the same master or slave hard disks.***

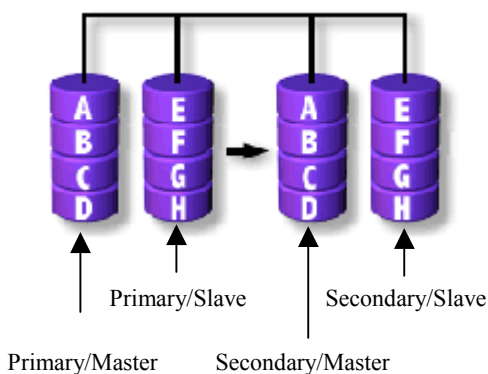
RAID 1



### Setup Array for RAID 0+1:

A RAID 0+1 (mirror and stripe) array has to be formed by four hard drives. RAID 0+1 is implemented as a mirrored array whose segments are RAID 0 arrays so RAID 0+1 also has fault-tolerance capacity as RAID 1. It not only enhances hard disk access performance but also backups data to prevent data loss. The formed array is automatically set as array 0.

RAID 0+1



### **Setup Array for JBOD:**

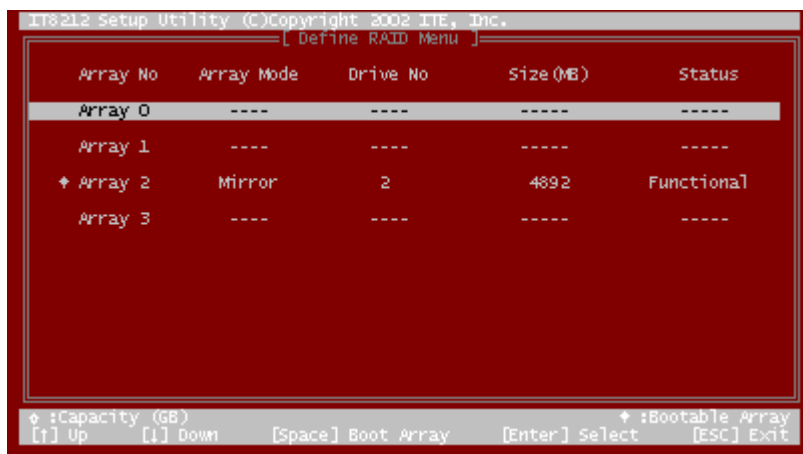
The GigaRAID (IT8212) ATA RAID Controller allows you to use two, three or four hard drives to form a JBOD (**J**ust a **B**unch **O**f **D**isks) array as array 0. Although JBOD doesn't offer other RAID functionality, it makes the hard disks appear to be a single one by combining the drives into one larger logical one without any capacity loss.

### **Setup Array for Normal:**

You can use the GigaRAID (IT8212) ATA RAID Controller as a normal IDE controller. The GigaRAID (IT8212) ATA RAID Controller allows you to use one, two, three or four hard drives. All the hard drives attached on the GigaRAID (IT8212) ATA RAID Controller are left to act as independent drive volumes.

## Define RAID

Click “2” on the **Main Menu** then you can enter the **Define RAID Menu**. Please use arrow keys ↑ and ↓ to highlight the array number you want to define; use “space” key to specify the bootable array if you like to boot your system from array attached on GigaRAID (IT8212) ATA RAID Controller; and click the “Enter” key to select it and enter the **Define RAID Sub-Menu** to create your array. If you want to quit and go back to the **Main Menu**, please click the “Esc” key.

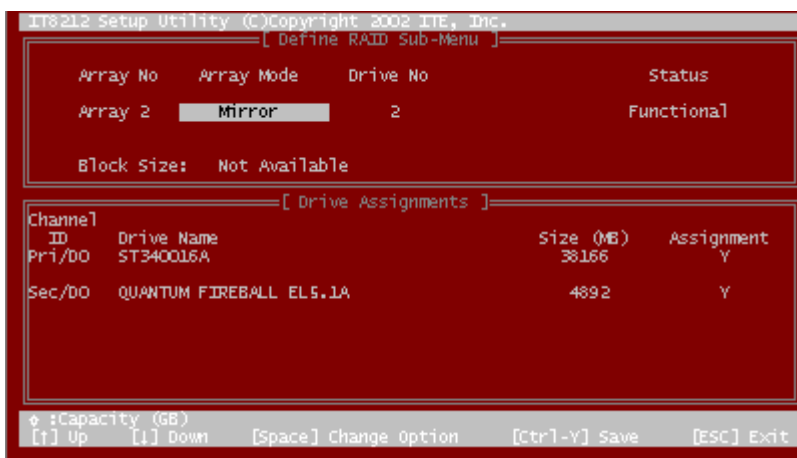


When an array is not assigned a RAID level, you will see “- - -” on the row. Column “Array Mode” shows the RAID level (Stripe, Mirror, Stripe + Mirror or JBOD) assigned to the array. Column “Drive No” shows the number of hard drive included in the array. Column “Size” shows the array’s total capacity. If there is a symbol ✱ shown in front of “Size”, the capacity unit is gigabyte. Column “Status” shows array status. You will see “Functional” if the array is operational and “Non-Functional” if the array has lost its functionality.

Please highlight the array number you want to define, click the “Enter” key, then the **Define RAID Sub-Menu** will appear and allow drive assignments to the array.

### Define RAID Sub-Menu

When you highlight the array you want to define on the **Define RAID Menu**, click the “Enter” key then you will enter this **Define RAID Sub-Menu**. You can use arrow keys ↑ and ↓ to highlight different positions. The “space” bar key can help you cycle through the different options. “Ctrl-Y” keys can save the change and the “Esc” key can help you quit then go back to the **Define RAID Menu** on page 22.



### Block Size Option:

You can select Stripe Block size ranging from 1k to 64k for Stripe (RAID 0) or Stripe + Mirror (RAID 0+1) array. The selection of block size is related to how your data is sent and regained from hard drives. You can do some tests to decide which block size is suitable for your system. Generally, a large block size is suitable to manage large file transfer such as MPEG files. On the contrary, the small block size is suitable to manage small files such as e-mail files.

### Drive Assignments Option:

You can use arrow keys ↑ and ↓ to highlight the drive you want to assign to the disk array and change the status of **Assignments** to “Y” by pressing the “space” bar key.

For the meanings of “Array Mode”, “Drive No” and “Status”, please refer to **Define RAID Menu** on page 22. The location of the hard drive is shown at the column “Channel ID”. “Pri” represents the primary channel and “Sec” represents the secondary channel. D0 represents a master hard drive while D1 represents a slave hard drive. Column “Drive Name” shows the model name of the hard drive. Column “Size” shows the capacity of each hard drive. When a symbol ⚙ is shown before the size, the capacity unit is gigabyte.

When you press “Ctrl-Y” keys to save your change, Setup Utility will check if the setting is legal. If not, an error message will pop up to show you what the error is and you have to correct the setting. Limitations are shown as below.

Stripe (RAID 0): There isn't any specific limitation.

Mirror (RAID 1): Two hard drives that form a RAID 1 array have to be attached as the same master or slave hard disks. For example, primary channel (Pri) master drive (D0) and secondary channel (Sec) master drive (D0) can form a mirror array; primary channel (Pri) slave drive (D1) and secondary channel (Sec) slave drive (D1) can form a mirror array; but primary channel master drive and primary channel slave drive cannot form a mirror array.

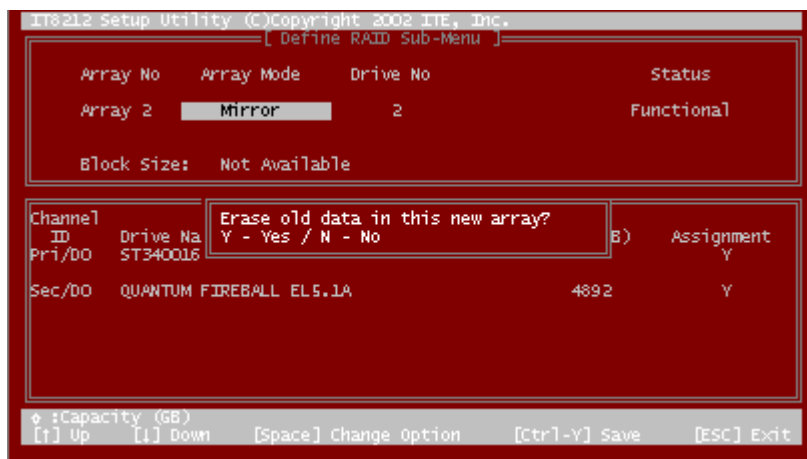
Stripe + Mirror (RAID 0+1): A RAID 0+1 array has to be formed by four hard drives.

RAID 0+1 is implemented as a mirrored array whose segments are RAID 0 arrays.

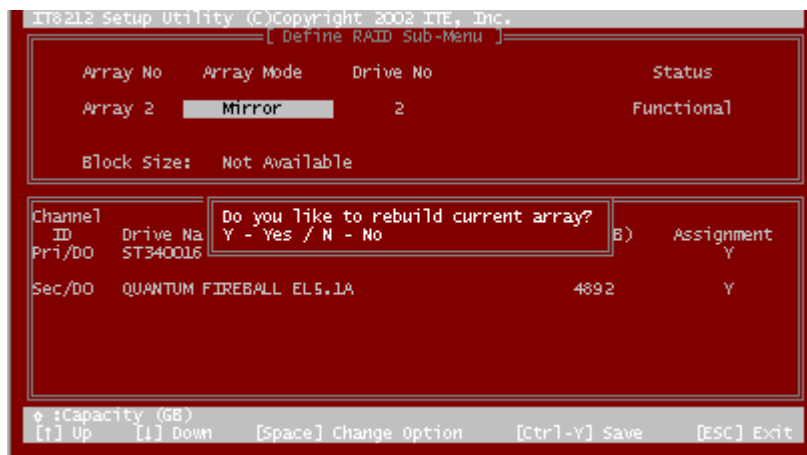
SPAN (JBOD): There isn't any specific limitation.

Normal: If a hard drive is not included in an array (Column "Assignment" in the View **Drive Assignment** is shown "Free"), this hard drive is regarded as a normal drive. The existence of the normal hard drive sometimes will influence the array number user specified. If the Pri/D0, Pri/D1, Sec/D0 or Sec/D1 hard drive is a normal drive, array 0, 1, 2 or 3 cannot have the array setting respectively. However, you do not have to concern about this limitation. If Setup Utility finds any conflicts, Array No will be adjusted automatically. After finishing setting the array, go back to the **Define RAID Menu** on page 22 then you will find the Array No is changed. This is because the existence of the normal hard drive(s) causes the Array No to be adjusted automatically.

When you press "Ctrl-Y" keys to save your change and your settings checked by Setup Utility are correct, the following window will appear. You can choose to clear the boot sector for the newly created array or not. If your RAID Mode is neither Mirror nor Stripe + Mirror, this array setting is finished then you can click the "Esc" key to go back to the **Define RAID Menu** on page 22.

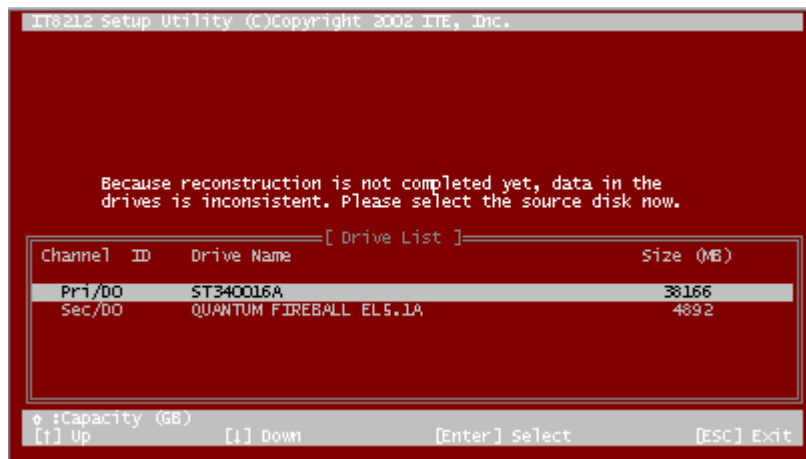


If your RAID Mode selection is Mirror or Stripe + Mirror and you choose not to delete the boot sector of the array, the following window will appear to ask whether you want to rebuild an array. If you choose “Y”, the **Rebuild RAID Menu** will appear. (Please refer to page 31.)



If you choose not to rebuild this array for the time being, the GigaRAID (IT8212) ATA RAID Controller cannot read data correctly because the data is inconsistent in the

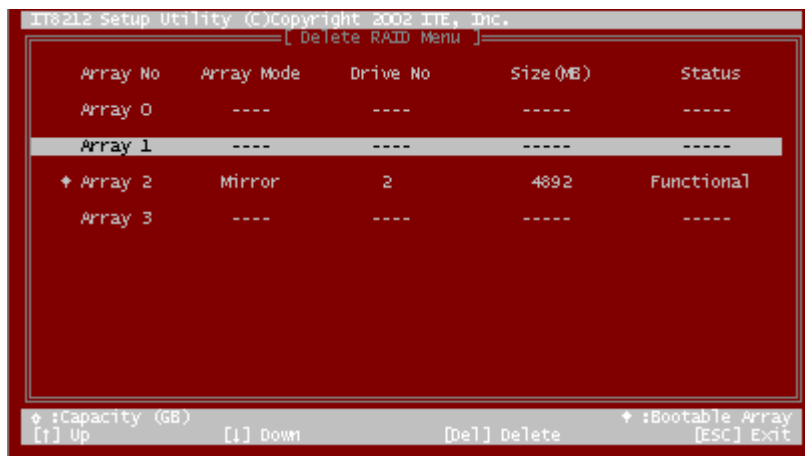
mirrored hard drives. Thus, the following window will appear.



Please press arrow keys ↑ and ↓ to highlight your selection and press the “Enter” key to select the source disk(s) then you have finished the setting and the screen will go back to the **Define RAID Sub-Menu** automatically. This array’s setup is completed. You can press the “Esc” key to go back to the **Define RAID Menu** on page 22.

## Delete RAID

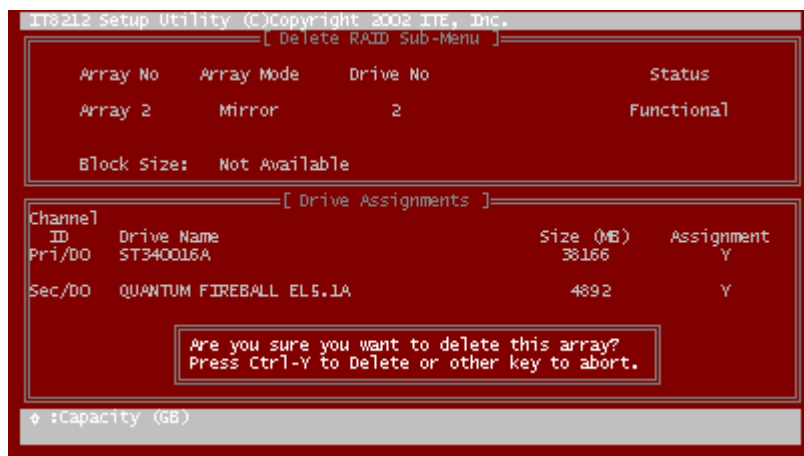
Press “3” on the **Main Menu** then the **Delete RAID Menu** will appear. Please use arrow keys ↑ and ↓ to highlight the array you want to delete, press “Del” to select it and then enter the **Delete RAID Sub-Menu** to delete your array. The “Del” key has no effect if the highlight row is an empty array. If you want to leave and go to the **Main Menu**, press the “Esc” key.



As for the detailed descriptions of “Array Mode”, “Drive No”, “Size” and “Status”, please refer to **Define RAID** on page 22.

### Delete RAID Sub-Menu

When you highlight the array you select to delete at the **Delete RAID Menu** and press the “Del” key, the **Delete RAID Sub-Menu** will appear. Please press “Ctrl-Y” keys to confirm to delete an array or press any other keys to abort array delete.



If you press “Ctrl-Y” keys to make sure to delete an array, the following window will appear. You can choose to clear the array’s boot sector or keep it. After you finish the selection, **Delete RAID Menu** will pop up automatically.

The screenshot shows the 'Delete RAID Sub-Menu' of the IT8212 Setup Utility. It displays information for Array 2, which is in Mirror mode using Drive No. 2 and is currently Functional. The block size is listed as 'Not Available'. Below this, a table lists the drives in the array: Channel ID, Drive No, Pri/DO, and Sec/DO. A confirmation box asks 'Erase the data in the array?' with options 'Y - Yes / N - No'. The table shows Drive No. ST340016 as the primary drive and a QUANTUM FIREBALL EL5.1A as the secondary drive. The capacity is 4892 GB. The assignment is set to 'Y'.

Array No	Array Mode	Drive No	Status
Array 2	Mirror	2	Functional

Block Size: Not Available

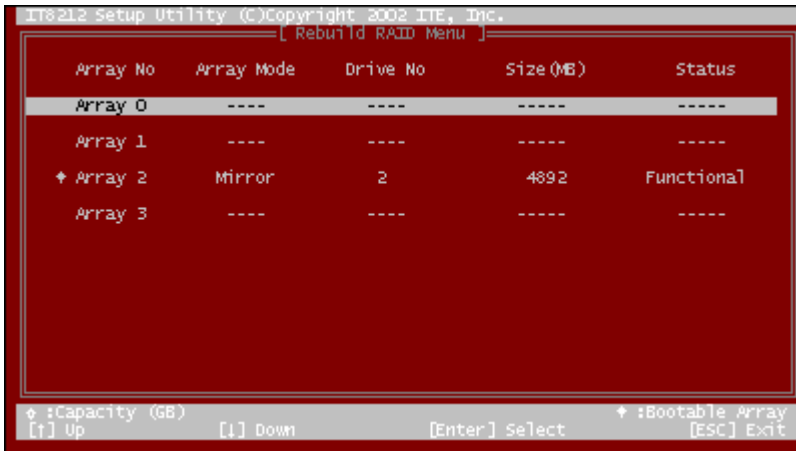
Channel ID	Drive No	Pri/DO	Sec/DO	Assignment
	ST340016			Y
	QUANTUM FIREBALL EL5.1A		4892	Y

Capacity (GB)

## Rebuild RAID

Press "4" when you are at the **Main Menu** then the **Rebuild RAID Menu** will appear.

You can use ↑ and ↓ keys to highlight different arrays, press the "Enter" key to select an array and enter the next rebuild drive select screen. If the RAID Mode of the array you want to select is neither mirror nor stripe + mirror, the "Enter" key will have no effect. If you want to leave and go back to the **Main Menu**, press the "Esc" key.



### Rebuild RAID Drive Select

When you highlight the array you want to rebuild on the **Rebuild RAID Menu**, press the “Enter” key then the following screen will appear.

IT8212 Setup Utility (C)Copyright 2002 ITE, Inc.

[ Source Drive ]

Channel	ID	Drive Name	Size (MB)
---------	----	------------	-----------

[ Target Drive ]

Channel	ID	Drive Name	Size (MB)
---------	----	------------	-----------

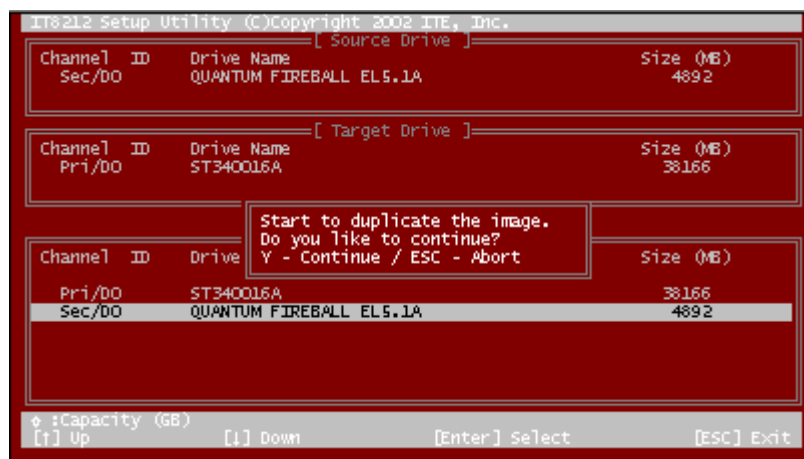
[ Drive List ]

Channel	ID	Drive Name	Size (MB)
Pri/00		ST340016A	38166
Sec/00		QUANTUM FIREBALL EL5.1A	4892

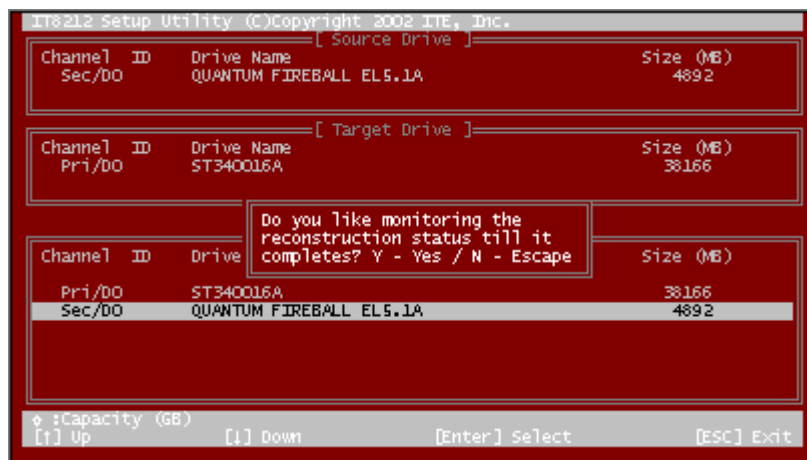
◆ :Capacity (GB)

[F] Up      [Down] Down      [Enter] Select      [Esc] Exit

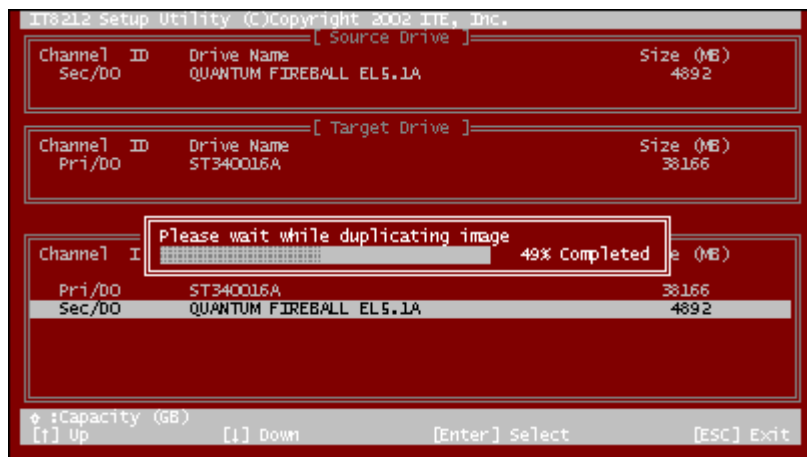
You can use arrow keys ↑ and ↓ to highlight the source disk(s) then press the “Enter” key to select the source disk(s). The following window will appear to make sure if you would like to continue.



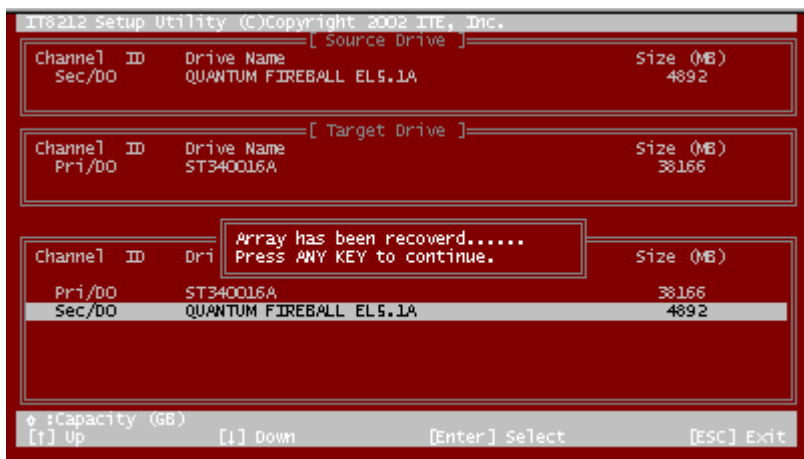
If you press “Y”, the following window will pop up. You can select to monitor the whole rebuild process until it ends completely or select background rebuild. You can leave Setup Utility and boot directly if you choose background rebuild and rebuild can proceed at the background.



The following screen will appear if you choose to monitor the whole rebuild process.



When rebuild is completed, a message below will pop up to inform you that rebuild is finished.

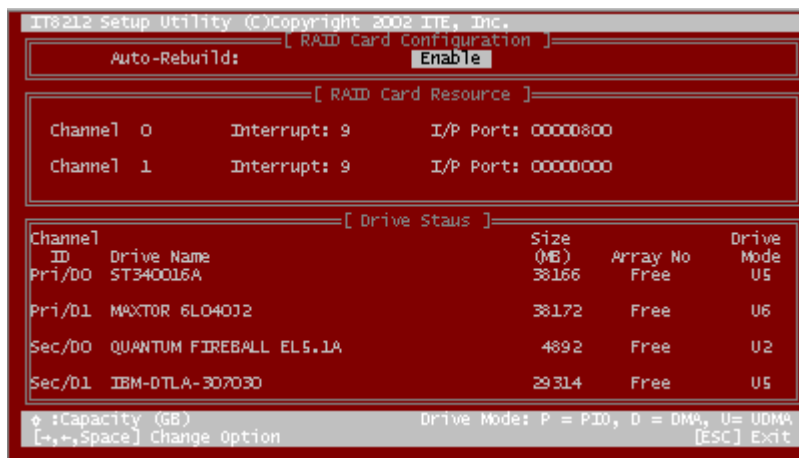


Then you leave and go back to the **Rebuild RAID Menu**.

## RAID Card Configuration

Press “5” on the **Main Menu** then the **RAID Card Configuration** menu will appear.

You can use arrow keys → and ← and the “space” bar key to enable or disable Auto-Rebuild option.



When Auto-Rebuild enables, the GigaRAID (IT8212) ATA RAID Controller can rebuild your mirrored array automatically. If a failed mirrored drive is replaced without shutting down your PC, the GigaRAID (IT8212) ATA RAID Controller can detect the hot-swap action and start rebuilding automatically. When Auto-Rebuild is disabled, you need to rebuild your mirrored array manually from **Application** (Please refer to page 72) or from **Rebuild RAID Menu** (Please refer to page 31).

On the **RAID Card Resource** section, you can see the PCI slot interrupt and I/O port address used by the GigaRAID (IT8212) ATA RAID Controller. You can also see the status of each hard drive from the **Drive Status** section. For the meanings of

“Channel ID”, “Drive Name” and “Size”, please refer to **Define RAID sub-Menu** on page 23. Column “Array No” shows hard drive’s array number. If a hard drive is not assigned to an array, it’s shown as free. A free hard drive is taken as a normal one. Column “Mode” shows hard drive’s data transfer mode. “U” represents Ultra DMA (UDMA) mode, “D” represents Multiword DMA (DMA) mode and “P” represents PIO mode. PIO modes 0, 1, 2, 3, and 4 correspond to maximum transfer rates of 3.3, 5.2, 8.3, 11.1 and 16.7 megabytes per second (MB/s) respectively. Multiword DMA modes 0, 1, and 2 have maximum transfer rates of 4.2, 13.3, and 16.7 MB/s respectively. Ultra DMA modes 0, 1, 2, 3, 4, and 5 have maximum transfer rates of 16.7, 25, 33.3, 44.4, 66.7, and 100 MB/s respectively.

## Driver Installation

This section details the procedures to install the GigaRAID (IT8212) ATA RAID Controller driver under the following various operating systems. Before starting to install this driver, please make sure that GigaRAID (IT8212) ATA RAID Controller has already been properly setup in the system.

- Windows XP
- Windows 2000
- Windows 98/ME
- Windows NT 4.0

For the Windows operating system (Win NT, WinXP, Win2000 ), for IDE RAID/SCSI/Serial ATA functioning, the driver must first be transferred to a floppy disk. Please follow the steps below to complete driver transfer to a floppy disk:

- 1) Please insert the provided driver CD into the hard disk drive eg. Drive D:
- 2) Insert a blank formatted floppy disk into the floppy disk drive.
- 3) Either from "Command Prompt" or DOS, please type in  
"D:\BootDrv\menu.exe"
- 4) Information on all chipsets should be listed on the screen, please select the proper chipset model.

Your system will then automatically zip and transfer this driver file to the floppy disk.

After you complete the steps, boot from the Windows CD to install the RAID drivers. When install Windows 2000 or Windows XP from HDDs in serial ATA controller, press F6 as Win2000 or XP boots up, then supply serial ATA controller driver by this floppy disk. Follow on-screen instructions to complete installation.

(Each time you add a new hard drive to a RAID array, the RAID driver will have to be installed under Windows once for that hard drive. After that, the driver will not have to be installed.)

## Windows XP

Install the driver during Windows XP installation

1. Start Windows XP installation.



***Warning: Because of the different selections of the following installation methods, the time when step2 starts will be different.***

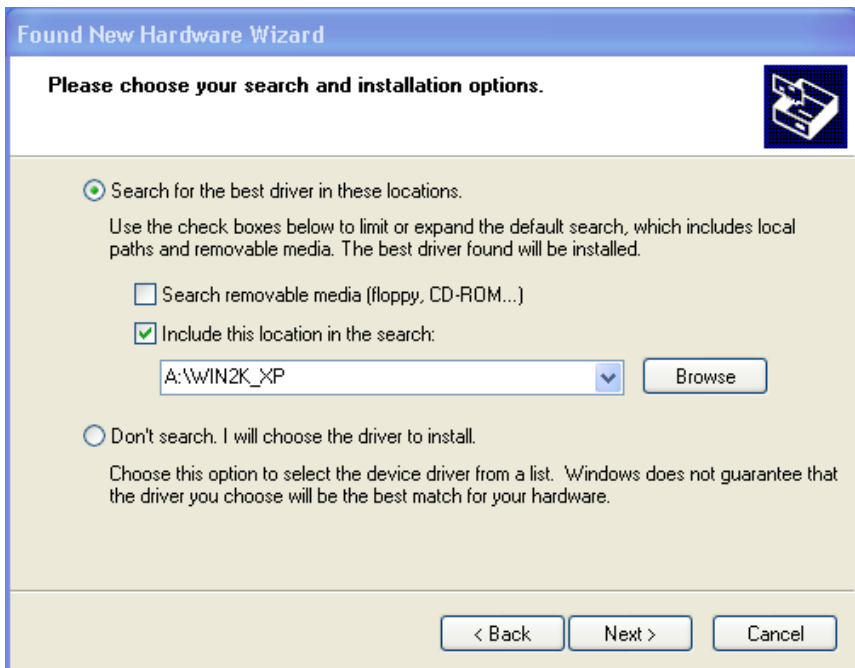
- Boot from floppy with Windows installation diskette.
  - Boot from floppy with un-installable diskette.
  - Boot from CD-ROM with Windows installation CD.
2. When the message “**Press F6 if you need to install third party SCSI or RAID driver**” appears on the bottom of the screen, please press the <F6> key.
  3. The installation will continue. When a message appears to ask you to designate the device you want to install, press the <S> key.
  4. Follow the instruction of the installation program to insert the GigaRAID (IT8212) ATA RAID Controller Driver diskette into the floppy disk drive then press the <Enter> key to continue.
  5. Select **GigaRAID (IT8212) ATA RAID Controller (Windows 2000/XP)** from the device list shown on the window then press the <Enter> key to continue.
  6. The devices that are going to be installed will be listed on the next window. **GigaRAID (IT8212) ATA RAID Controller (Windows 2000/XP)** should be contained on the list. If you need to install any other devices, please designate them now. After designating all the devices, please proceed to the next step.
  7. Press the <Enter> key to continue the installation of Windows XP.

Install the driver under existing Windows XP

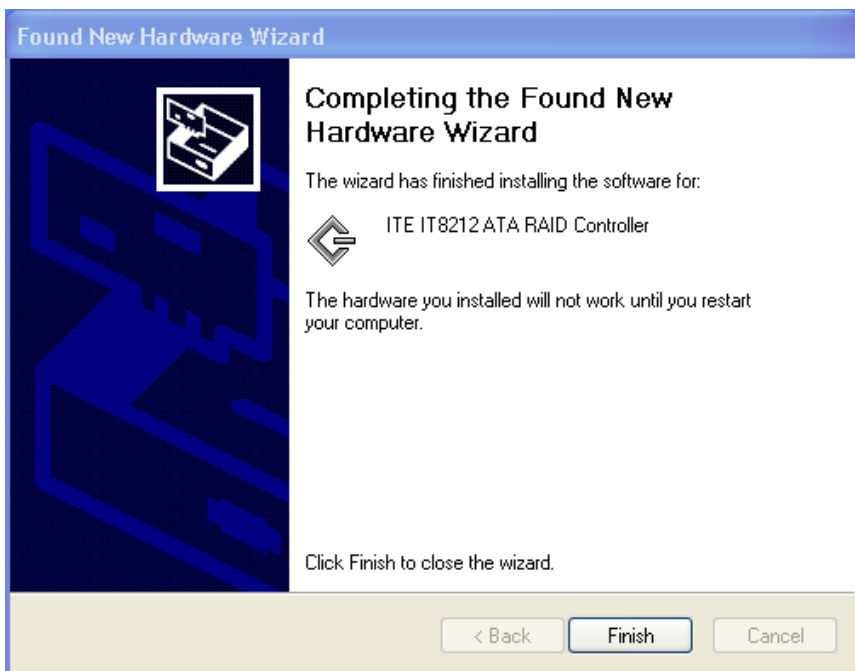
1. Start Windows.
2. When Windows detects GigaRAID (IT8212) ATA RAID Controller in the system, a dialog box named **Found New Hardware Wizard** will show on the screen. Select the **Install from a list or specific location (Advanced)** option then click "Next" to continue to setup.



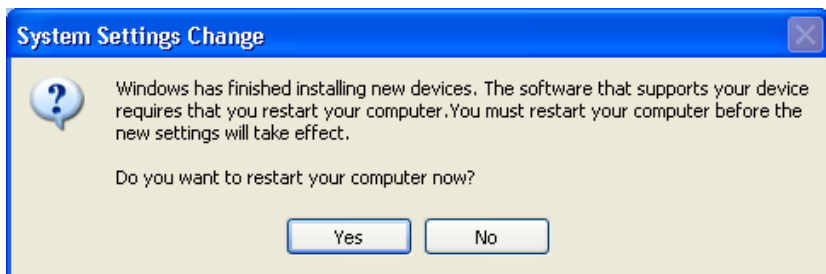
3. Insert the GigaRAID (IT8212) ATA RAID Controller Driver diskette into the floppy disk drive then check the **Search for the best driver in these locations** option and type **A:\WIN2K\_XP** on the field designating the file's location. Press "Next" to continue to setup.



4. The driver installation has finished. Press “Finish” to continue.



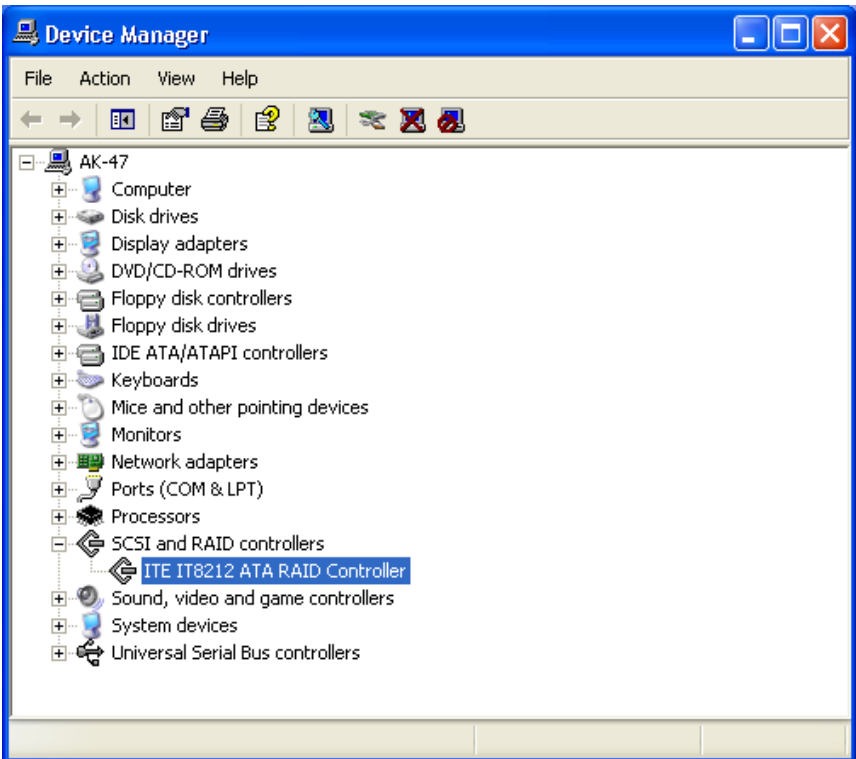
5. Follow the instruction to restart the computer then the driver will take effect.



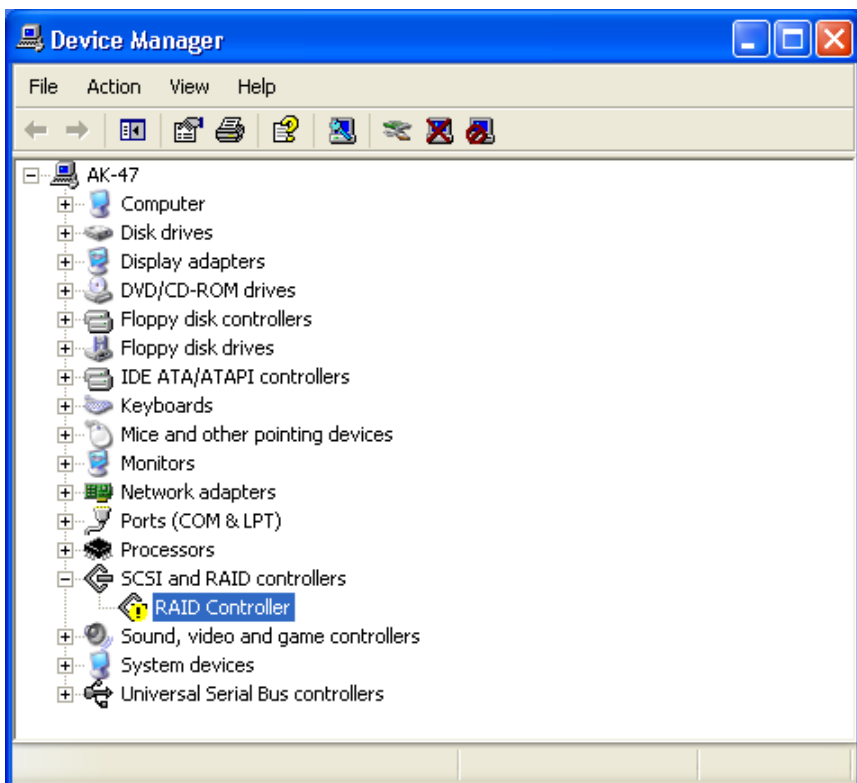
## Verify Installation

Follow the previous section to install the driver. After the system restarts, you can do the following steps to check if the driver has been installed successfully.

1. Right-click **My Computer** icon on **Desktop**. Select the **Properties** option from the form.
2. Select the **Hardware** tab from the **System Properties** window then click the **Device Manager** button on the panel. If **GigaRAID (IT8212) ATA RAID Controller** device is shown below the **SCSI and RAID controllers** item (see the following figure), it means that the driver has been installed successfully.



3. If there is a marking ! or ? under **SCSI and RAID Controller** device as shown below, it indicates that the driver has not been correctly installed. User should remove the device and reinstall.



## Windows 2000

Install the driver during Windows 2000 installation

1. Start Windows 2000 installation.



***Warning: Because of the different selections of the following installation methods, the time when step2 starts will be different.***

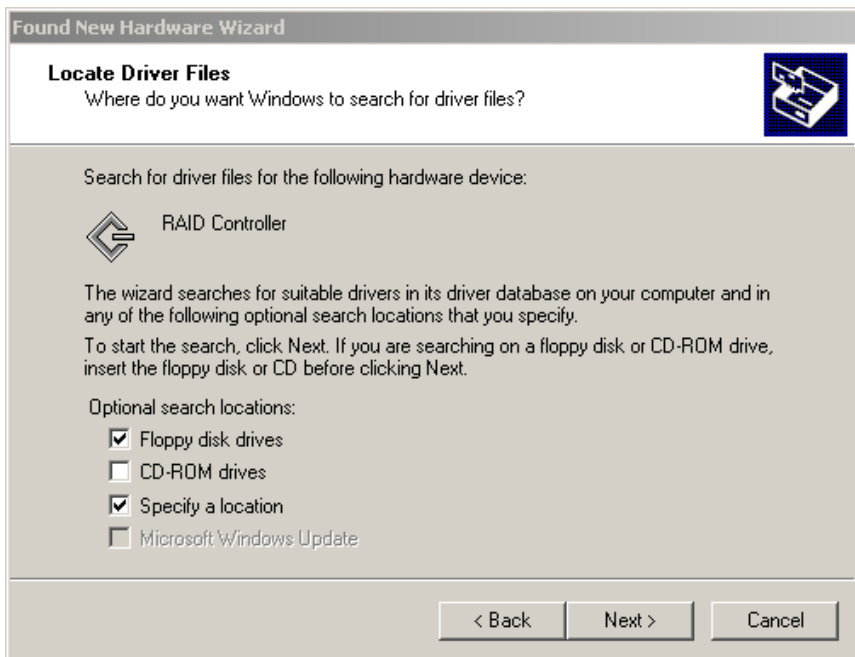
- Boot from floppy with Windows installation diskette.
  - Boot from floppy with un-installable diskette.
  - Boot from CD-ROM with Windows installation CD.
2. When the message “**Press F6 if you need to install third party SCSI or RAID driver**” appears on the bottom of the screen, please press the <F6> key.
  3. The installation will continue. When a message appears to ask you to designate the device you want to install, press the <S> key.
  4. Follow the instruction of the installation program to insert the GigaRAID (IT8212) ATA RAID Controller Driver diskette into the floppy disk drive then press the <Enter> key to continue.
  5. Select GigaRAID (IT8212) ATA RAID **Controller (Windows 2000/XP)** from the device list shown on the window then press the <Enter> key to continue.
  6. The devices that are going to be installed will be listed on the next window. GigaRAID (IT8212) ATA RAID **Controller (Windows 2000/XP)** should be contained on the list. If you need to install any other devices, please designate them now. After designating all the devices, please proceed to the next step.
  7. Press the <Enter> key to continue the installation of Windows 2000.

Install the driver under existing Windows 2000

1. Start Windows.
2. When Windows detects GigaRAID (IT8212) ATA RAID Controller in the system, a dialog box named **Found New Hardware Wizard** will show on the screen. Select the **Search for a suitable driver for my device (recommended)** option then click "Next" to continue to setup.



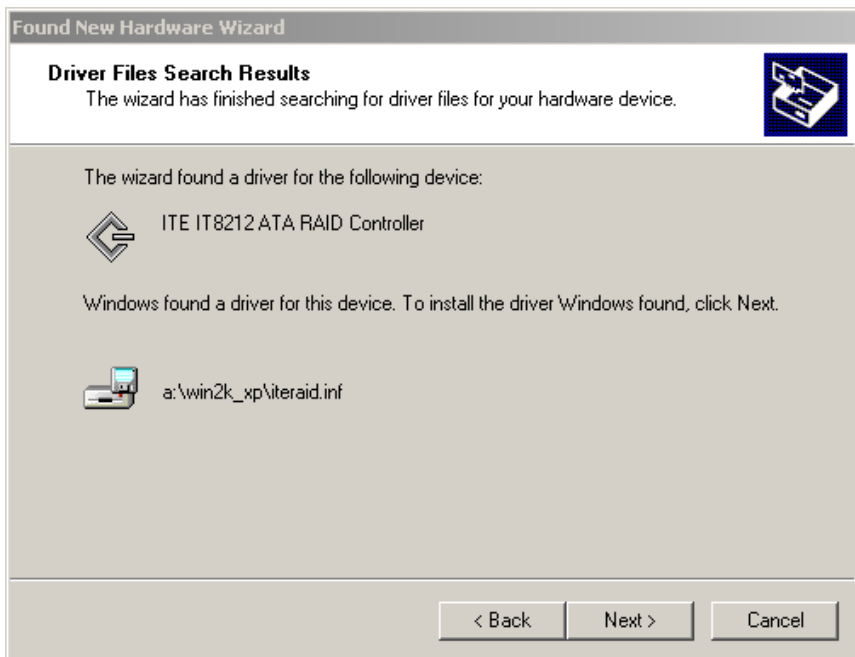
3. Check the **Specify a location** option on the following window then press “Next” to continue to setup.



4. Insert the GigaRAID (IT8212) ATA RAID Controller Driver diskette into the floppy disk drive then type **A:\WIN2K\_XP** on the field designating the file's location. Press "Next" to continue to setup.



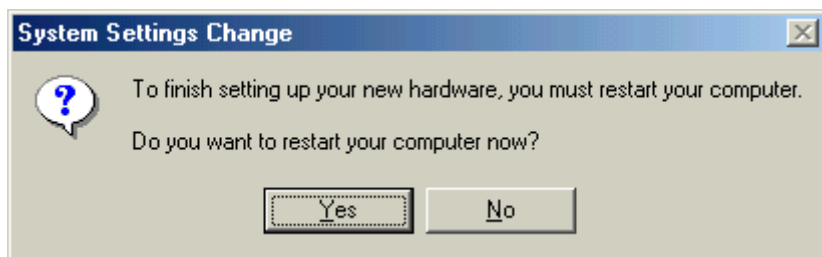
5. The driver for GigaRAID (IT8212) ATA RAID Controller is found. Press “Next” to continue to setup.



6. The driver installation has finished. Press “Finish” to continue.



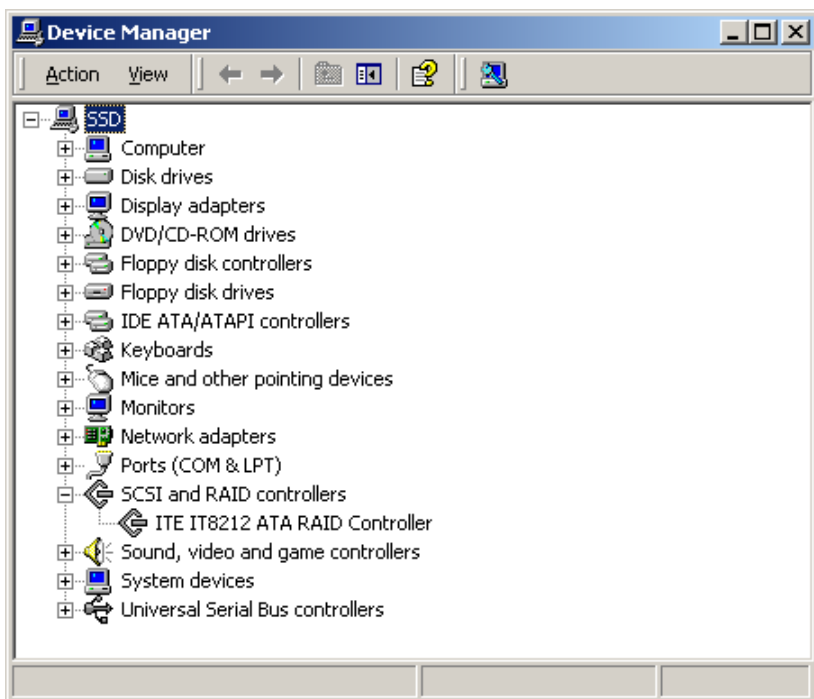
7. Follow the instruction to restart the computer then the driver will take effect.



## Verify Installation

Follow the previous section to install the driver. After the system restarts, you can do the following steps to check if the driver has been installed successfully.

1. Right-click **My Computer** icon on **Desktop**. Select the **Properties** option from the form.
2. Select the **Hardware** tab from the **System Properties** window then click the **Device Manager** button on the panel. If **GigaRAID (IT8212) ATA RAID Controller** device is shown under the **SCSI and RAID controllers** item (see the following figure), it means that the driver has been installed successfully.



3. If there is a marking ! or ? under **SCSI and ATA RAID Controller** device, it indicates that the driver has not been correctly installed. User should remove the device and reinstall.

## Windows SE/ME

Install the driver

1. Start Windows.
2. When Windows detects GigaRAID (IT8212) ATA RAID Controller in the system, a dialog box named **Add New Hardware Wizard** will show on the screen.

Select the **Specify the location of the driver (Advanced)** option then click "Next" to continue to setup.



3. Insert the GigaRAID (IT8212) ATA RAID Controller Driver diskette into the floppy disk drive then select **Search for the best driver for your device (Recommended)** from the following dialog box and type **A:\WIN98\_ME** on the field designating the file's location. Press "Next" to continue to setup.



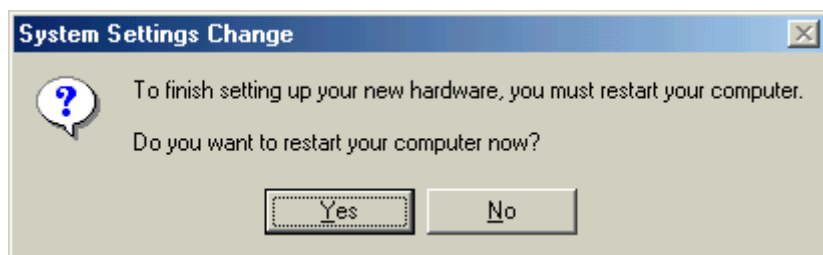
4. The driver for **GigaRAID (IT8212) ATA RAID Controller** is found. Press “Next” to continue to setup.



5. The driver installation has finished. Press “Finish” to continue.



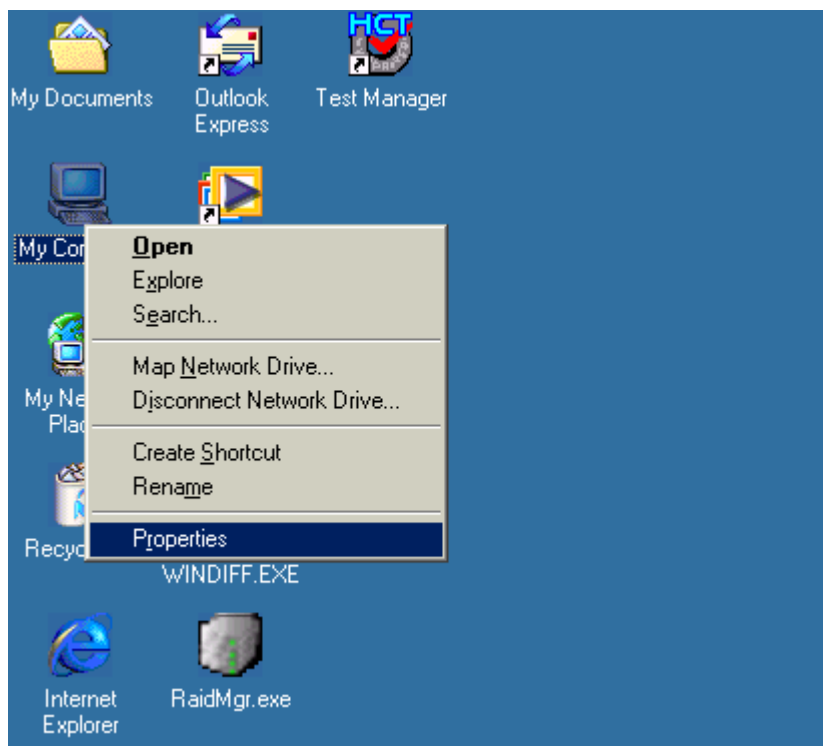
6. Follow the instruction to restart the computer then the driver will take effect.



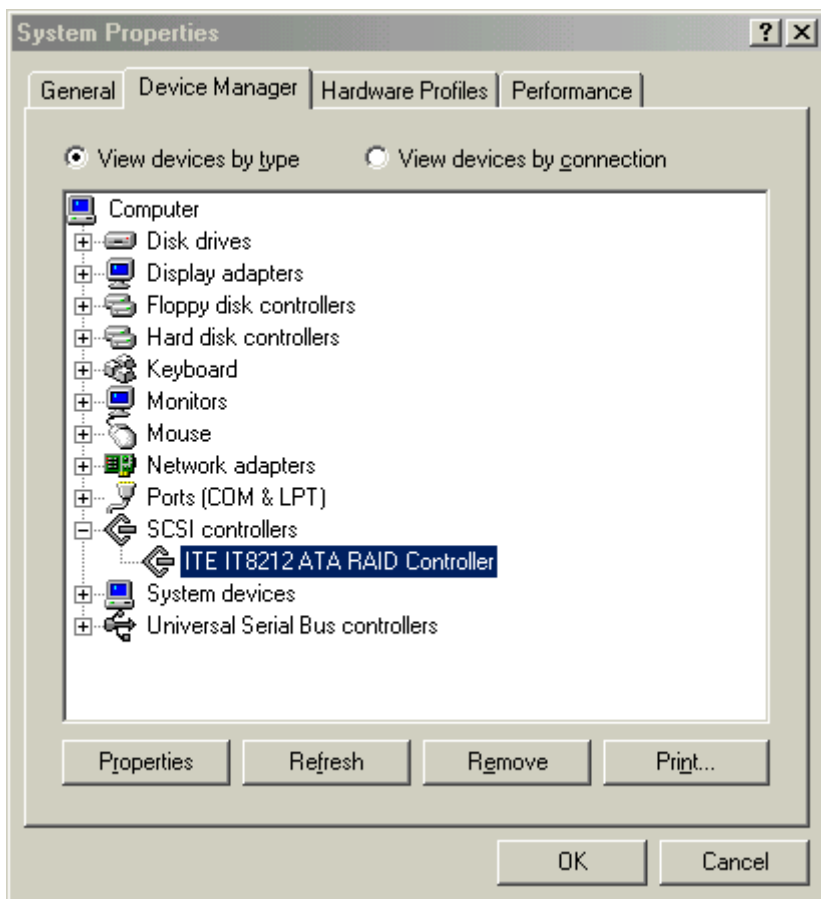
## Verify Installation

Follow the previous section to install the driver. After the system restarts, you can do the following steps to check if the driver has been installed successfully.

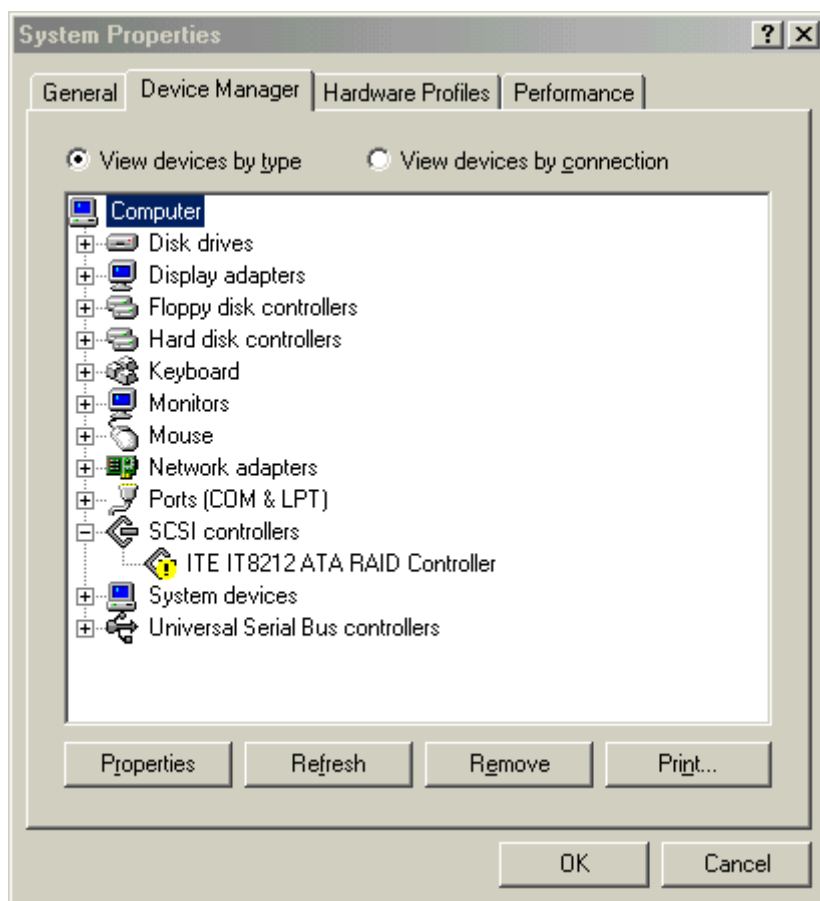
1. Right-click **My Computer** icon on **Desktop**. Select the **Properties** option from the form.



2. Select the **Device Manager** panel from the **System Properties** window. If **GigaRAID (IT8212) ATA RAID Controller** device is shown under the **SCSI controllers** item (see the following figure), it means that the driver has been installed successfully.



3. If there is a marking ! or ? in front of the **GigaRAID (IT8212) ATA RAID Controller** device as shown below, it indicates that the driver has not been correctly installed. User should remove the device and reinstall.



## Windows NT

Install the driver during Windows NT installation

1. Start Windows NT installation.

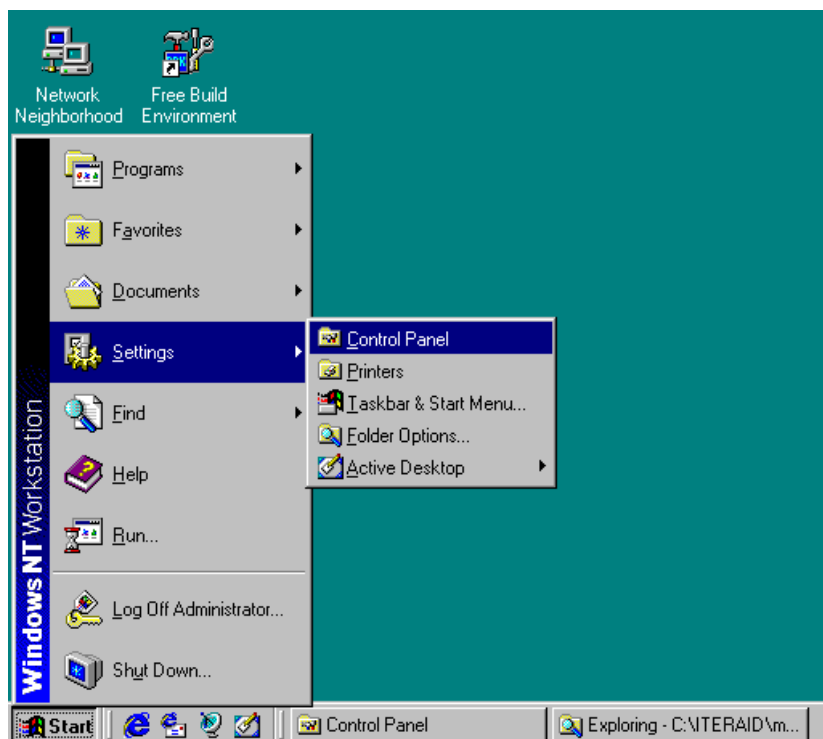


***Warning: Because of the different selections of the following installation methods, the time when step2 starts will be different.***

- Boot from floppy with Windows installation diskette.
  - Boot from floppy with un-installable diskette.
  - Boot from CD-ROM with Windows installation CD.
2. When the message “**Setup is inspecting your computer’s hardware configuration**” appears on the bottom of the screen, please press the <F6> key.
  3. The installation will continue. When a message appears to ask you to designate the device you want to install, press the <S> key.
  4. The device list of SCSI Adapter will show on the following window. Select “**Other**” and press the <Enter> key to continue.
  5. Insert GigaRAID (IT8212) ATA RAID Controller Driver diskette into the floppy disk drive then press the <Enter> key to continue.
  6. Select **GigaRAID (IT8212) ATA RAID Controller (Windows NT)** from the device list shown on the window then press the <Enter> key to continue.
  7. The devices that are going to be installed will be listed on the next window. **GigaRAID (IT8212) ATA RAID Controller (Windows 2000/XP)** should be contained on the list. If you need to install any other devices, please designate them now. After designating all the devices, please proceed to the next step.
  8. Press the <Enter> key to continue the installation of Windows NT.

Install the driver under existing Windows NT

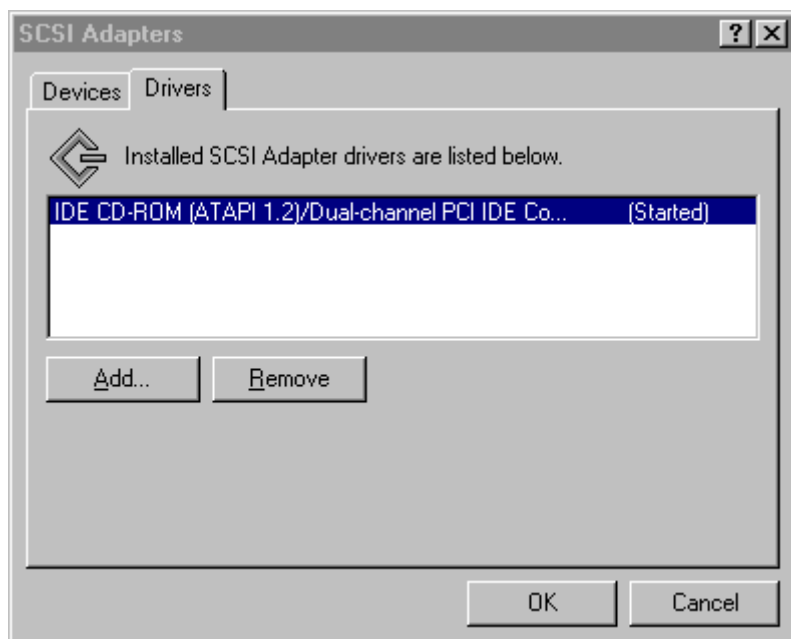
1. Start Windows.
2. Select **Settings** from the **Start** menu then choose the **Control Panel** option from the **Settings** form.



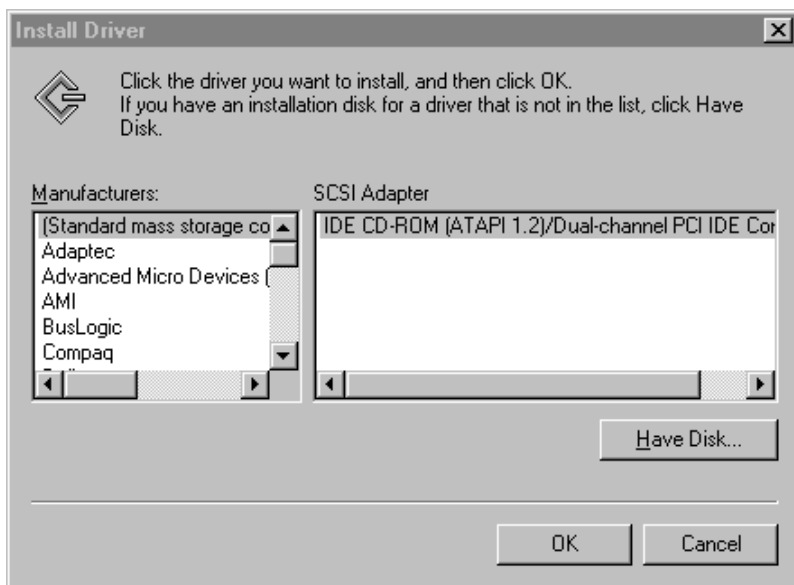
3. In the **Control Panel** window, double-click on the **SCSI Adapters** icon.



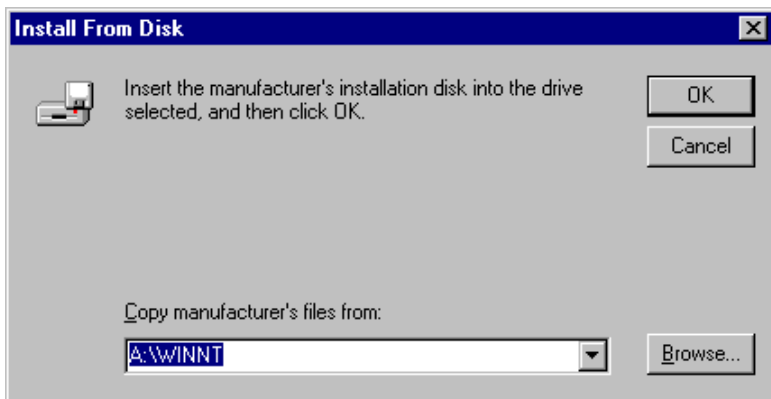
4. Choose the **Drivers** tab from the **SCSI Adapters** window then press “Add” to continue.



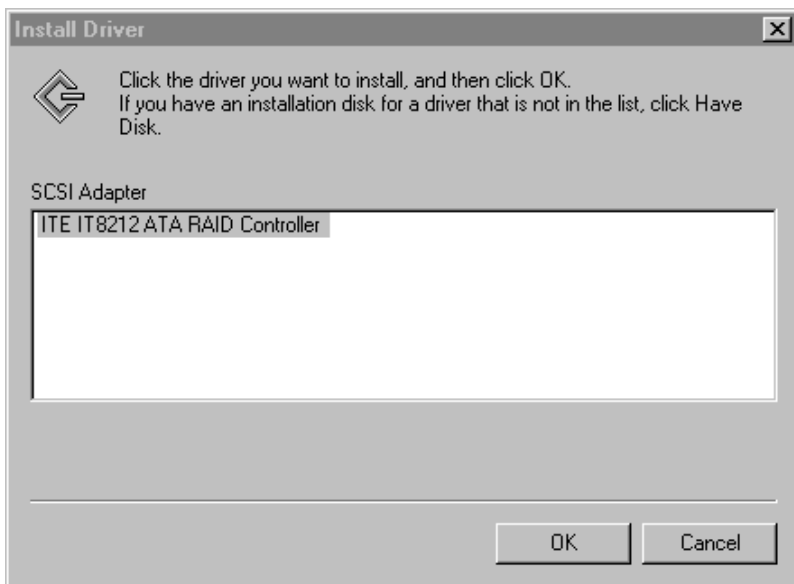
5. Click **Have Disk** from the **Install Driver** window.



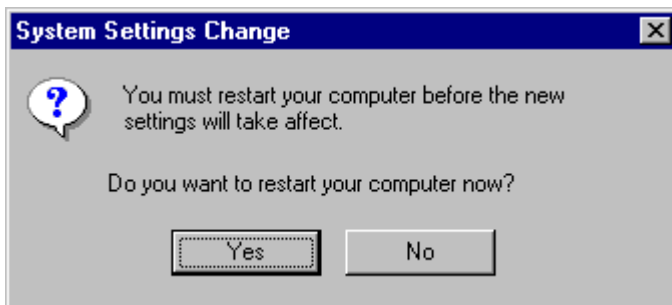
6. Insert the GigaRAID (IT8212) ATA RAID Controller Driver diskette into the floppy disk drive then type **A:\WINNT** on the field designating the file's location. Press "OK" to continue to setup.



7. Select **GigaRAID (IT8212) ATA RAID Controller** from the window then click “OK” to continue.



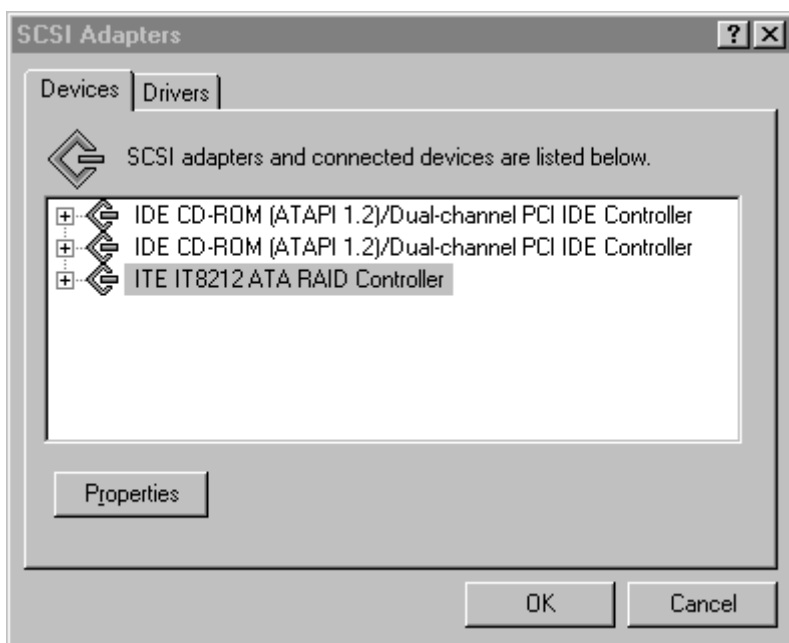
8. Follow the instruction to restart the computer then the driver will take effect.



### Verify Installation

Follow the previous section to install the driver. After the system restarts, you can do the following steps to check if the driver has been installed successfully.

1. Follow step1 to step3 described in the previous section to activate the **SCSI Adapters** option.
2. If the **GigaRAID (IT8212) ATA RAID Controller** device is shown on the **Devices** panel as shown below, it means that the driver has been installed successfully.



## Linux

### Install the GigaRAID (IT8212) ATA RAID Controller on Red Hat 7.3

1. Mount the driver CD-ROM.

```
[/]mkdir cdrom ← For mount point
```

```
[/]mount -t iso9660 /dev/cdrom /cdrom ← Mount CD-ROM under /cdrom directory
```

2. Copy and unzip the new kernel

```
[/]cp /cdrom/linux/linux-2.4.18.tar.gz /usr/src/ ← Copy new kernel to the /usr/src/
```

```
[/]cd /usr/src/
```

```
[/]tar zxvf linux-2.4.18.tar.gz ← Untar the kernel
```

1. Compile the new kernel

```
[/]cd linux-2.4.18 ← Go to the new kernel directory
```

```
[/]make menuconfig ← Configure your hardware (Our RAID controller is already selected , you don't have to select again)
```

**The following are the procedures to compile the new kernel:**

```
[/]make dep
```

```
[/]make clean
```

```
[/]make bzImage
```

```
[/]make modules
```

```
[/]make modules_install
```

**or you can use this way**

```
[/] make dep clean bzImage modules modules_install
```

**then**

```
[/]make install ← This will copy the necessary stuffs to the /boot directory
```

2. Update the new kernel into LILO

```
[/] cd /etc/
```

```
[/]vim lilo.conf ← Edit the lilo.conf , the contents may be different with
```

```
yours
```

```
prompt
```

```
timeout=50
```

```
default=Linux
```

```
boot=/dev/had
```

```
map=/boot/map
```

```
install=/boot/boot.b
```

```
message=/boot/message
```

```
linear
```

```
#
```

```
# Original kernel
```

```
#
```

```
image=/boot/vmlinuz-2.4.18-3
```

```
label=Linux
```

```
initrd=/boot/initrd-2.4.18-3.img
```

```
read-only
```

```
root=/dev/hda1
```

```
#
```

```
# Add the new kernel here
```

```
#
```

```
image=/boot/vmlinuz-2.4.18 ← The kernel is in /boot directory
```

```
label=Linux-RAID ← The new kernel label (you can change it)
```

```
read-only
```

```
root=/dev/hda1
```

3. Run LILO to update the boot record on disk by typing the following:

[/] /sbin/lilo

**The output should be similar to:**

Added Linux \*

Added Linux-RAID

4. Reboot the system then choose the Linux-RAID.

[/]reboot

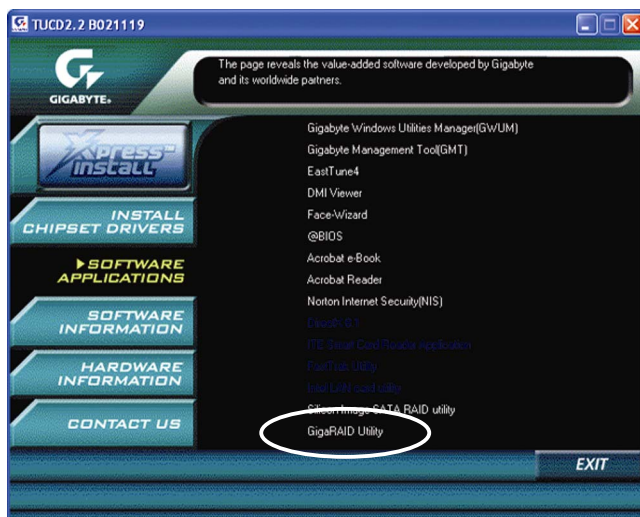
## Application

### Installation

**Pictures below are shown in Windows XP (CD ver. 2.2)**

Insert the driver CD-title that came with your motherboard into your CD-ROM drive, the driver CD-title will auto start and show the installation guide. If not, please double click the CD-ROM device icon in "My computer", and execute the setup.exe.

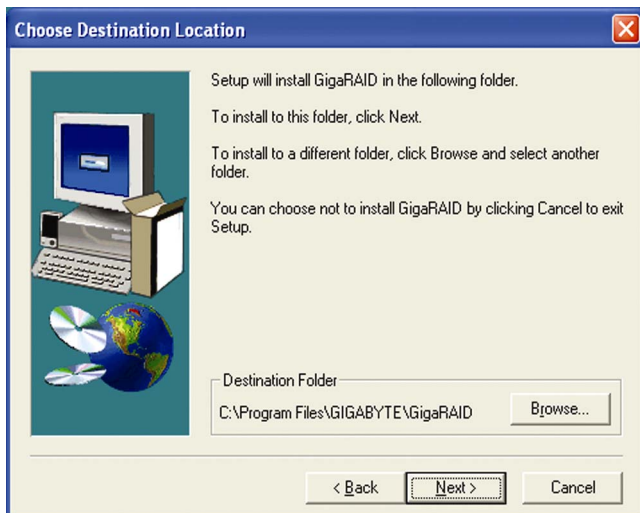
1. Click "GigaRAID Utility."



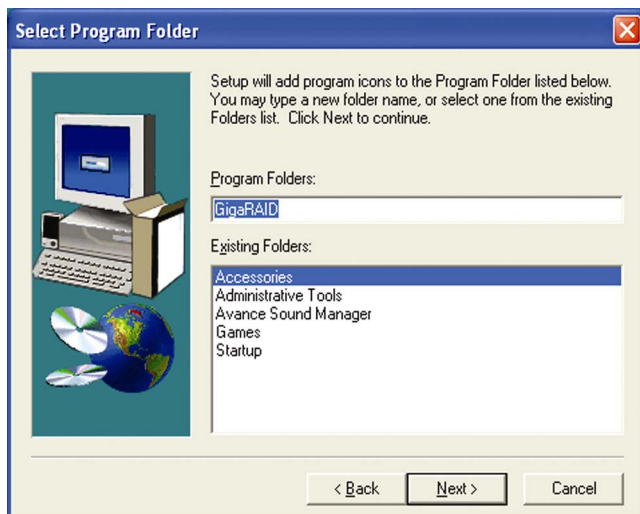
2. Click "Next".



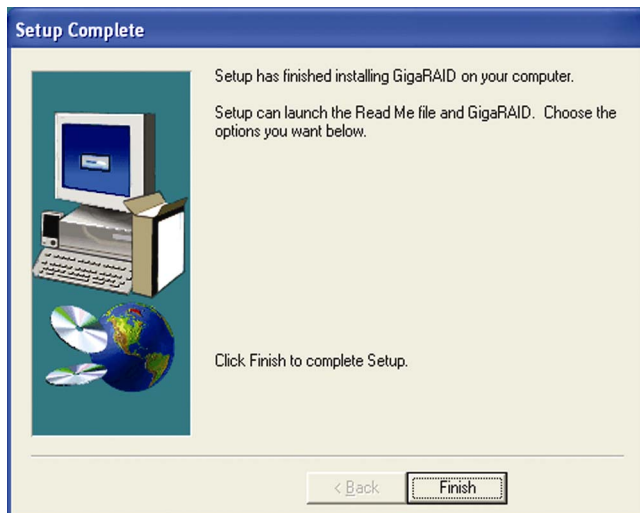
3. Click "Next".



4. Click "Next".




5. Click "Finish".



## Functions Description

### 1. Starting

RAID Manager will be executed automatically when Microsoft Windows is booted. A small icon, , will show in the system tray at the right bottom corner to indicate RAID Manager is active.



#### Open RAID Manager

Double click on the small icon in the system tray to open the RAID Manager control panel.

Click the right button on the small icon to open the menu then choose “Open”.

The system information will be presented in the beginning when the RAID Manager control panel is opened. Please read the next section **System Information** for more detail about system information.

#### Close RAID Manager

Click “Close” to close RAID Manager. The RAID Manager will be minimized to the system tray at the right bottom corner but will not exit.

#### Terminate RAID Manager

Right click the small icon, and choose “Exit” to terminate RAID Manager.

**Note:** Click the “Start Menu” at the left bottom on the RAID Manager control panel to choose RAID functions.

**If more than one adapter exists, click the “RAID Adapter” at the right bottom to choose RAID Adapter.**

***Alert LED, at the right bottom, is used to indicate the whole system situation.***

GREEN: Normal.

RED: If the configuration error of any array occurs.

BLINKING: If there is any array in rebuilding process.

## 2. System Information

### Device Status

Click the “Start Menu” at the left bottom on the RAID Manager control panel then choose “Device Status” to show the system information.



- If the disk arrays exist, they will be listed at the first row.
- If the physical disks exist, they will be listed at the second row.
- Click the disk array or physical disk icons to list the device properties.
- Reset Adapter: Check to reset adapter.
- Click “Refresh” to refresh system information.

### 3. Configuration

#### Create Disk Array

Click the “Start Menu” at the left bottom on the RAID Manager control panel then choose “Create Disk Array” to create a disk array.



- Array Type: RAID 0, RAID 1, RAID 0+1, JBOD
- Array Name: Assigned by RAID Manager
- Block Size: Virtual block size for RAID 0 or RAID 0+1
- Auto Rebuild: Check to rebuild by hardware automatically.
- Boot Disk: Check to boot from this array.
- Erase Partition: Check to erase partition table.
- Source: Source disk
- Existing Arrays: Existing arrays list
- Available Disks: Disks can be used to create an array.
- Selected Disks: Disks will be put in an array.

- Click “Create” to create a disk array.
- Remarks:
  - Stripe Size is valid when Array Type is RAID 0 or RAID 0+1.
  - Auto Rebuild is valid when Array Type is RAID 1 or RAID 0+1.
  - Source Disk is valid when Array Type is RAID 1 or RAID 0+1 and Erase Partition is disabled.
  - Check “Erase Partition” to erase partition table or uncheck “Erase Partition” not to erase partition table. If there is an Array of RAID 1 or RAID 0+1, “Erase Partition” can’t be modified.
  - If “Erase Partition” is unchecked, the “Source” must be assigned.

## Delete Disk Array

Click the “Start Menu” at the left bottom on the RAID Manager control panel then choose “Delete Disk Array” to delete disk array.



- Available Arrays: List existing arrays.
- Selected Arrays: Arrays will be deleted.
- Erase Partition: Check to erase partition table.
- Click “Delete” to delete disk arrays.

## Rebuild Disk Array

Click the “Start Menu” at the left bottom on the RAID Manager control panel then choose “Rebuild Disk Array” to rebuild disk array.



- Rebuild Array: List arrays which can be rebuilt.
- Source Disk: The source for rebuilding the array
- Destination Disk: The destination for rebuilding the array
- Resume Previous Rebuild Process: Check to resume the last rebuild process.
- Status Timer: Time interval for polling rebuild status
- Click “Rebuild” to start rebuilding a disk array.

## 4. Records

### Activity Records

Click the “Start Menu” at the left bottom on the RAID Manager control panel then choose “Activity Records” to show the activity records.



Click “Clear” to clear all records.

## 5. Options

### Email Notification

Click the “Start Menu” at the left bottom on the RAID Manager control panel then choose “Email Notification” to modify the settings.



- Event Timer: Self error detection time interval
- Enable Email Notification: Check to enable email notification.
- Email Address: If email notification is enabled, a warning message will be sent to this email box.
- Click “Test” to send a test email to the above email address.
- Click “Set” to save the settings.

## Remote Access

Click the “Start Menu” at the left bottom on the RAID Manager control panel then choose “Remote Access” to modify the settings.



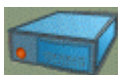
- Machine Type: Single Machine, Client or Server
- Server Name: If this machine is client, a server is required.
- Server Name can be a computer name or an IP address.
- Click “Set” to save the settings.
- Restart RAID Manager if settings are modified.

## 6. Miscellaneous

### Icon list



represents disk array is inactive.



represents disk array is active.



represents physical disk is inactive.



represents physical disk is active.

## How to...

### 1. Create RAID 0

- Open RAID Manager.
- Change the control panel to "Create Disk Array".
- Select "Array Type" as "RAID 0".
- Check "Erase Partition" to erase partition table or uncheck "Erase Partition" not to erase partition table.
- Select "Stripe Size". Default is 64 KB.
- Select at least two disks.
- Click "Create".

### 2. Create RAID 1

- Open RAID Manager.
- Change the control panel to "Create Disks Array".
- Select "Array Type" as "RAID 1".
- Check "Erase Partition" to erase partition table or uncheck "Erase Partition" not to erase partition table. If there is an Array of RAID 1 or RAID 0+1, "Erase Partition" can't be modified.
- If "Erase Partition" is unchecked, the "Source" must be assigned.
- Select exactly two disks (These two disks must be "primary master and secondary master" or "primary slave and secondary slave").
- Click "Create".

### **3. Create RAID 0+1**

- Open RAID Manager.
- Change the control panel to "Create Disks Array".
- Select "Array Type" as "RAID 0+1".
- Check "Erase Partition" to erase partition table or uncheck "Erase Partition" not to erase partition table. If there is an Array of RAID 1 or RAID 0+1, "Erase Partition" can't be modified.
- If "Erase Partition" is unchecked, the "Source" must be assigned.
- Select exactly four disks.
- Click "Create".

### **4. Create JBOD**

- Open RAID Manager.
- Change the control panel to "Create Disk Array".
- Select "Array Type" as "JBOD".
- Select at least two disks.
- Click "Create".

## Q&A

1.   **Q:** How to set RAID as startup disk?  
     **A:** Please set booting device to Array0 and set as SCSI boot in the BIOS.
2.   **Q:** Is CD ROM able to be used?  
     **A:** This product does not support any ATAPI devices.
3.   **Q:** How can two RAID0 perform well?  
     **A:** For two RAID0, it is suggested that HD should be put in different channels to get a better performance.
4.   **Q:** Is a special mobile rack necessary for HOT Swap?  
     **A:** It's not necessary. The regular one is just enough.
5.   **Q:** What if R1 and R0+1 just create RAID but don't Rebuild right away?  
     **A:** It is suggested that they should Rebuild as soon as possible because the HD data of two mirrors are different and if the HD with the correct data is damaged, the data will lose.
6.   **Q:** For R0+1, when two HDs in the same channel are hot swapping at the same time, sometimes AP can't find that Slave is back again.  
     **A:** This situation may happen to some HDs. To avoid this situation, please set Slave HD first then set Master HD.