

# GeForce 6100-M9 BIOS Setup

---

<b>BIOS Setup</b> .....	<b>1</b>
1 Main Menu .....	3
2 Standard CMOS Features .....	6
3 Advanced BIOS Features.....	9
4 Advanced Chipset Features.....	14
5 Integrated Peripherals .....	17
6 Power Management Setup .....	23
7 PnP/PCI Configurations.....	26
8 PC Health Status .....	29
9 Frequency/Voltage Control .....	31

## **BIOS Setup**

### **Introduction**

This manual discussed Award™ Setup program built into the ROM BIOS. The Setup program allows users to modify the basic system configuration. This special information is then stored in battery-backed RAM so that it retains the Setup information when the power is turned off.

The Award BIOS™ installed in your computer system's ROM (Read Only Memory) is a custom version of an industry standard BIOS. This means that it supports AMD processor input/output system. The BIOS provides critical low-level support for standard devices such as disk drives and serial and parallel ports.

Adding important has customized the Award BIOS™, but nonstandard, features such as virus and password protection as well as special support for detailed fine-tuning of the chipset controlling the entire system.

The rest of this manual is intended to guide you through the process of configuring your system using Setup.

### **Plug and Play Support**

These AWARD BIOS supports the Plug and Play Version 1.0A specification. ESCD (Extended System Configuration Data) write is supported.

### **EPA Green PC Support**

This AWARD BIOS supports Version 1.03 of the EPA Green PC specification.

### **APM Support**

These AWARD BIOS supports Version 1.1&1.2 of the Advanced Power Management (APM) specification. Power management features are implemented via the System Management Interrupt (SMI). Sleep and Suspend power management modes are supported. Power to the hard disk drives and video monitors can be managed by this AWARD BIOS.

### **ACPI Support**

Award ACPI BIOS support Version 1.0 of Advanced Configuration and Power interface specification (ACPI). It provides ASL code for power management and device configuration capabilities as defined in the ACPI specification, developed by Microsoft, Intel and Toshiba.

---

## ***GeForce 6100-M9***

---

### **PCI Bus Support**

This AWARD BIOS also supports Version 2.1 of the Intel PCI (Peripheral Component Interconnect) local bus specification.

### **DRAM Support**

DDR SDRAM (Double Data Rate Synchronous DRAM) are supported.

### **Supported CPUs**

This AWARD BIOS supports the AMD CPU.

### **Using Setup**

In general, you use the arrow keys to highlight items, press <Enter> to select, use the <PgUp> and <PgDn> keys to change entries, press <F1> for help and press <Esc> to quit. The following table provides more detail about how to navigate in the Setup program by using the keyboard.

<b>Keystroke</b>	<b>Function</b>
Up arrow	Move to previous item
Down arrow	Move to next item
Left arrow	Move to the item on the left (menu bar)
Right arrow	Move to the item on the right (menu bar)
Move Enter	Move to the item you desired
PgUp key	Increase the numeric value or make changes
PgDn key	Decrease the numeric value or make changes
+ Key	Increase the numeric value or make changes
- Key	Decrease the numeric value or make changes
Esc key	Main Menu – Quit and not save changes into CMOS Status Page Setup Menu and Option Page Setup Menu – Exit Current page and return to Main Menu
F1 key	General help on Setup navigation keys
F5 key	Load previous values from CMOS
F7 key	Load the optimized defaults
F10 key	Save all the CMOS changes and exit

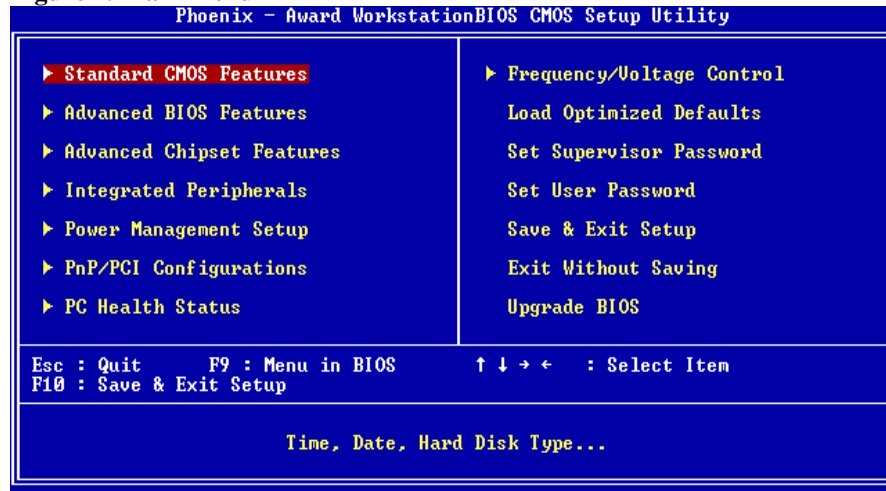
## 1 Main Menu

Once you enter Award BIOS™ CMOS Setup Utility, the Main Menu will appear on the screen. The Main Menu allows you to select from several setup functions. Use the arrow keys to select among the items and press <Enter> to accept and enter the sub-menu.

**!! WARNING !!**

The information about BIOS defaults on manual (**Figure 1,2,3,4,5,6,7,8,9**) is just for reference, please refer to the BIOS installed on board, for update information.

■ **Figure 1. Main Menu**



### Standard CMOS Features

This submenu contains industry standard configurable options.

### Advanced BIOS Features

This submenu allows you to configure enhanced features of the BIOS.

### Advanced Chipset Features

This submenu allows you to configure special chipset features.

## ***GeForce 6100-M9***

---

### **Integrated Peripherals**

This submenu allows you to configure certain IDE hard drive options and Programmed Input/ Output features.

### **Power Management Setup**

This submenu allows you to configure the power management features.

### **PnP/PCI Configurations**

This submenu allows you to configure certain “Plug and Play” and PCI options.

### **PC Health Status**

This submenu allows you to monitor the hardware of your system.

### **Frequency/Voltage Control**

This submenu allows you to change CPU Vcore Voltage and CPU/PCI clock. **(However, this function is strongly recommended not to use. Not properly change the voltage and clock may cause the CPU or M/B damage!)**

### **Load Optimized Defaults**

This selection allows you to reload the BIOS when the system is having problems particularly with the boot sequence. These configurations are factory settings optimized for this system. A confirmation message will be displayed before defaults are set.



Load Optimized Defaults (Y/N)? N

### **Set Supervisor Password**

Setting the supervisor password will prohibit everyone except the supervisor from making changes using the CMOS Setup Utility. You will be prompted with to enter a password.



Enter Password:

---

## ***GeForce 6100-M9***

---

### **Set User Password**

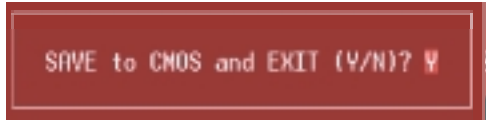
If the Supervisor Password is not set, then the User Password will function in the same way as the Supervisor Password. If the Supervisor Password is set and the User Password is set, the “User” will only be able to view configurations but will not be able to change them.

A screenshot of a BIOS screen with a dark red background. The text "Enter Password:" is displayed in a light red, monospaced font, centered on the screen.

Enter Password:

### **Save & Exit Setup**

Save all configuration changes to CMOS(memory) and exit setup. Confirmation message will be displayed before proceeding.

A screenshot of a BIOS screen with a dark red background. The text "SAVE to CMOS and EXIT (Y/N)? Y" is displayed in a light red, monospaced font, centered on the screen.

SAVE to CMOS and EXIT (Y/N)? Y

### **Exit Without Saving**

Abandon all changes made during the current session and exit setup. Confirmation message will be displayed before proceeding.

A screenshot of a BIOS screen with a dark red background. The text "Quit Without Saving (Y/N)? N" is displayed in a light red, monospaced font, centered on the screen.

Quit Without Saving (Y/N)? N

### **Upgrade BIOS**

This submenu allows you to upgrade bios.

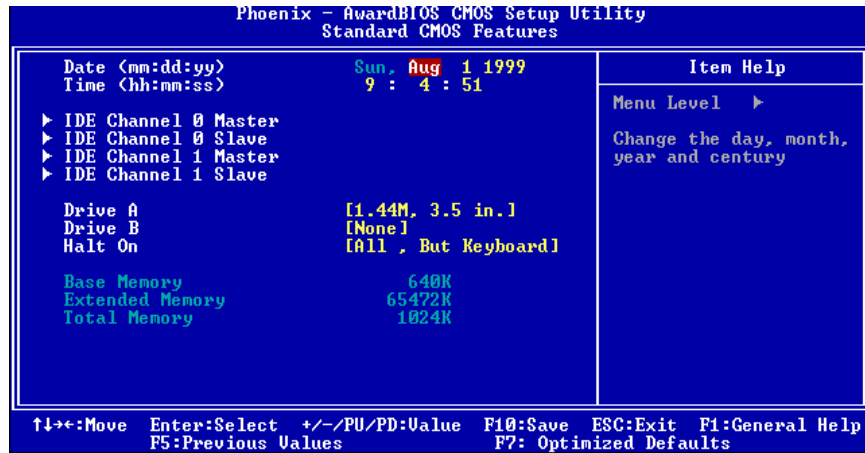
A screenshot of a BIOS screen with a dark red background. The text "BIOS UPDATE UTILITY (Y/N)? N" is displayed in a light red, monospaced font, centered on the screen.

BIOS UPDATE UTILITY (Y/N)? N

## 2 Standard CMOS Features

The items in Standard CMOS Setup Menu are divided into 10 categories. Each category includes no, one or more than one setup items. Use the arrow keys to highlight the item and then use the <PgUp> or <PgDn> keys to select the value you want in each item.

■ Figure 2. Standard CMOS Setup



---

## ***GeForce 6100-M9***

---

### **Main Menu Selections**

This table shows the selections that you can make on the Main Menu.

<b>Item</b>	<b>Options</b>	<b>Description</b>
Date	mm : dd : yy	Set the system date. Note that the 'Day' automatically changes when you set the date.
Time	hh : mm : ss	Set the system internal clock.
IDE Primary Master	Options are in its sub menu.	Press <Enter> to enter the sub menu of detailed options
IDE Primary Slave	Options are in its sub menu.	Press <Enter> to enter the sub menu of detailed options.
IDE Secondary Master	Options are in its sub menu.	Press <Enter> to enter the sub menu of detailed options.
IDE Secondary Slave	Options are in its sub menu.	Press <Enter> to enter the sub menu of detailed options.
Drive A Drive B	360K, 5.25 in 1.2M, 5.25 in 720K, 3.5 in 1.44M, 3.5 in 2.88M, 3.5 in None	Select the type of floppy disk drive installed in your system.
Video	EGA/VGA CGA 40 CGA 80 MONO	Select the default video device.



---

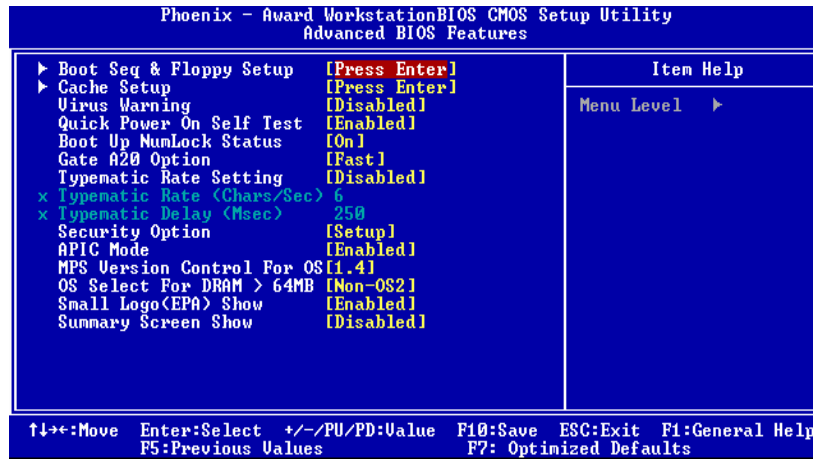
**GeForce 6100-M9**

---

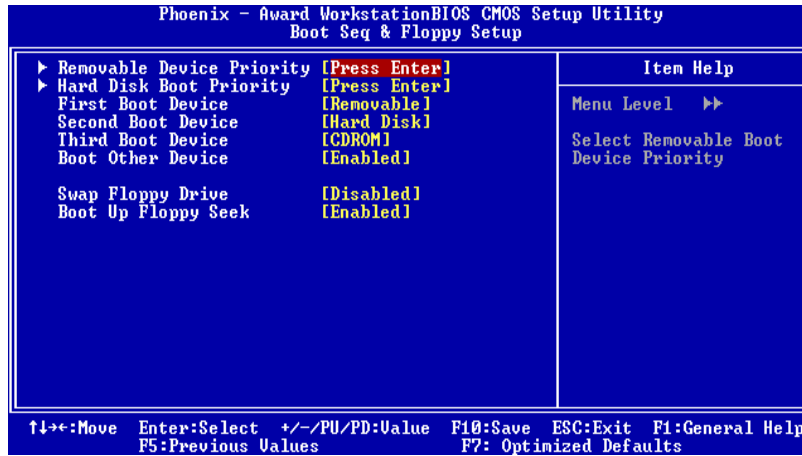
Item	Options	Description
Halt On	All Errors No Errors All, but Keyboard All, but Diskette All, but Disk/ Key	Select the situation in which you want the BIOS to stop the POST process and notify you.
Base Memory	N/A	Displays the amount of conventional memory detected during boot up.
Extended Memory	N/A	Displays the amount of extended memory detected during boot up.
Total Memory	N/A	Displays the total memory available in the system.

### 3 Advanced BIOS Features

■ Figure 3. Advanced BIOS Setup



#### Boot Seq & Floppy Setup

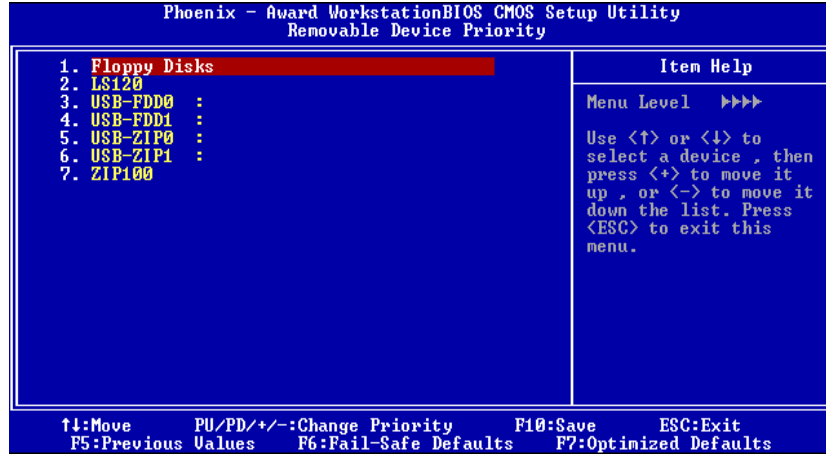


---

## GeForce 6100-M9

---

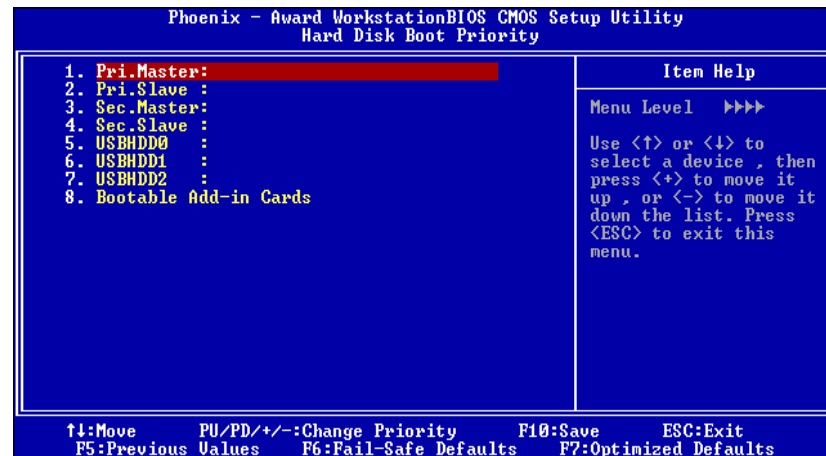
### Removable Device Priority



These BIOS attempt to load the operating system from the device in the sequence selected in these items.

**The Choices:** Floppy Disks, LS120, USB-FDD0, USB-FDD1, USB-ZIP0, USB-ZIP1, and ZIP100.

### Hard Disk Boot Priority



These BIOS attempt to load the operating system from the device in the sequence selected in these items.

**The Choices:** Pri. Master, Pri. Slave, Sec. Master, Sec. Slave, USBHDD0, USB HDD1, USB HDD2, and Bootable Add-in Cards.

---

## GeForce 6100-M9

---

### First/ Second/ Third/ Boot Other Device

These BIOS attempt to load the operating system from the devices in the sequence selected in these items.

**The Choices:** Floppy, LS120, HDD-0, SCSI, CDROM, HDD-1, HDD-2, HDD-3, ZIP100, LAN, Disabled.

### Swap Floppy Drive

For systems with two floppy drives, this option allows you to swap logical drive assignments.

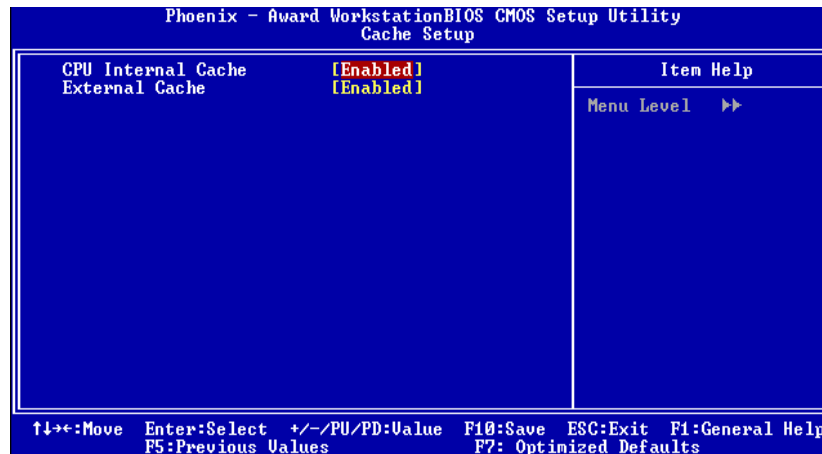
**The Choices:** Disabled (default), Enabled.

### Boot Up Floppy Seek

Enabling this option will test the floppy drives to determine if they have 40 or 80 tracks. Disabling this option reduces the time it takes to boot-up.

**The Choices:** Enabled (default), Disabled.

## Cache Setup



These BIOS attempt to load the operating system from the device in the sequence selected in these items.

### CPU Internal Cache

Depending on the CPU/chipset in use, you may be able to increase memory access time with this option.

**Enabled** (default)      Enable cache.

Disabled                  Disable cache.

### External Cache

This option enables or disables "Level 2" secondary cache on the CPU, which may improve performance.

**Enabled** (default)      Enable cache.

Disabled                  Disable cache.

---

## ***GeForce 6100-M9***

---

### **Virus Warning**

This option allows you to choose the Virus Warning feature that is used to protect the IDE Hard Disk boot sector. If this function is enabled and an attempt is made to write to the boot sector, BIOS will display a warning message on the screen and sound an alarm beep.

<b>Disabled</b> (default)	Virus protection is disabled.
Enabled	Virus protection is activated.

### **Quick Power On Self Test**

Enabling this option will cause an abridged version of the Power On Self-Test (POST) to execute after you power up the computer.

<b>Enabled</b> (default)	Enable quick POST.
Disabled	Normal POST.

### **Boot Up NumLock Status**

Selects the NumLock. State after power on.

<b>On</b> (default)	Numpad is number keys.
Off	Numpad is arrow keys.

### **Gate A20 Option**

Select if chipset or keyboard controller should control Gate A20.

Normal	A pin in the keyboard controller controls Gate A20.
<b>Fast</b> (default)	Lets chipset control Gate A20.

### **Typematic Rate Setting**

When a key is held down, the keystroke will repeat at a rate determined by the keyboard controller. When enabled, the typematic rate and typematic delay can be configured.

<b>Disabled</b> (default)
Enabled

### **Typematic Rate (Chars/Sec)**

Sets the rate at which a keystroke is repeated when you hold the key down.

**The Choices:** 6 (default), 8,10,12,15,20,24,30.

### **Typematic Delay (Msec)**

Sets the delay time after the key is held down before it begins to repeat the keystroke.

**The Choices:** 250 (default), 500, 750, 1000.

## ***GeForce 6100-M9***

---

### **Security Option**

This option will enable only individuals with passwords to bring the system online and/or to use the CMOS Setup Utility.

System

A password is required for the system to boot and is also required to access the Setup Utility.

**Setup** (default)

A password is required to access the Setup Utility only.

This will only apply if passwords are set from the Setup main menu.

### **APIC MODE**

Selecting Enabled enables APIC device mode reporting from the BIOS to the operating system.

**The Choices:** Enabled (default), Disabled.

### **MPS Version Control For OS**

The BIOS supports version 1.1 and 1.4 of the Intel multiprocessor specification. Select version supported by the operation system running on this computer.

**The Choices:** 1.4 (default), 1.1.

### **OS Select For DRAM > 64MB**

A choice other than Non-OS2 is only used for OS2 systems with memory exceeding 64MB.

**The Choices:** Non-OS2 (default), OS2.

### **Small Logo (EPA) Show**

This item allows you to enable/ disable display the small EPA logo.

**The Choices:** Enabled (default), Disabled.

### **Summary Screen Show**

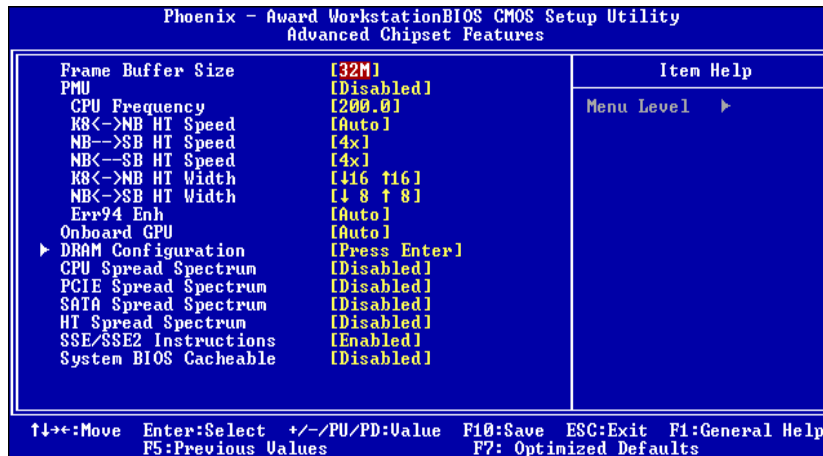
This item allows you to enable/ disable display the Summary Screen Show.

**The Choices:** Disabled (default), Enabled.

## 4 Advanced Chipset Features

This submenu allows you to configure the specific features of the chipset installed on your system. This chipset manage bus speeds and access to system memory resources, such as DRAM. It also coordinates communications with the PCI bus. The default settings that came with your system have been optimized and therefore should not be changed unless you are suspicious that the settings have been changed incorrectly.

■ Figure 4. Advanced Chipset Setup



### Frame Buffer Size

The Choices: 32M (default), 16M, 64M, 128M, Disabled.

### PMU

The Choices: Disabled (default), Enabled.

### CPU Frequency

This item allows you to select the CPU Frequency.

The Choices: 200.0 (default).

### K8<->NB HT Speed

The Choices: Auto (default).1X, 2X, 3X, 4X, 5X.

### NB-->SB HT Speed

The Choices: 4X (default).1X, 2X, 3X, 5X.

### NB<->SB HT Speed

The Choices: 4X (default).1X, 2X, 3X, 5X.

---

## GeForce 6100-M9

---

### K8<->NB HT Width

The Choices: ↓ 16 ↑ 16 (default), ↓ 8 ↑ 8.

### NB<->SB HT Width

The Choices: ↓ 8 ↑ 8 (default), ↓ 16 ↑ 16.

### Err94 Enh

This item allows you to enable/disable the “sequential Prefetch Feature” of K8 CPU.

The Choices: **Auto** (default), Disable.

### Onboard GPU

The Choices: **Auto** (default), Always Enable.

### DRAM Configuration

Phoenix - Award Workstation BIOS CMOS Setup Utility		
DRAM Configuration		
Timing Mode	[Auto]	Item Help
x Memclock index value <Mhz>	200Mhz	Menu Level →
x CAS# latency <Tcl>	2.5	
x Min RAS# active time <Tras>	8T	
x RAS# to CAS# delay <Trcd>	4T	
x Row precharge Time <Trp>	2T	
User Config mode	[Auto]	
x 1T/2T Memory Timing	2T	
MTRR mapping mode	[Continuous]	
↑↓←→:Move Enter:Select +/-/PU/PD:Value F10:Save ESC:Exit F1:General Help		
F5:Previous Values F7: Optimized Defaults		

#### Timing Mode

The Choices: **Auto** (default), Manual.

#### Memclock index value<MHz>

The Choices: **200MHz** (default).

#### CAS# Latency

This field specify the cas# latency, i.e. cas# to read data valid.

The Choices: **CL=2.5** (default), CL=3.0, CL=2.0

#### Min RAS# active time (tRAS)

This field specifies the minimum RAS# active time. Typically -45-60 Nsec.

The Choices: **8T** (default).

#### RAS# to CAS# Delay (tRCD)

This field specifies the RAS# to CAS# Delay to read/ write command to the same bank. Typically -20 Nsec.

The Choices: **4T** (default).



## ***GeForce 6100-M9***

---

### **Row precharge Time (tRP)**

This field specifies the Row precharge Time. Precharge to Active or Auto-Refresh of the same bank. Typically 20-24 Nsec.

**The Choices:** 2T (default).

### **User Config Mode**

**The Choices:** Auto (default), Manual.

### **1T/2T Memory Timing**

**The Choices:** 2T (default).

### **MIRR mapping mode**

**The Choices:** Continuous (default), Discrete.

### **CPU Spread Spectrum**

**The Choices:** Disabled (default), Center, Down.

### **PCIE Spread Spectrum**

This item allows you to disable \ enable the SATA spread spectrum function.

**The Choices:** Disabled (default), Enable.

### **SATA Spread Spectrum**

This item allows you to disable \ enable the SATA spread spectrum function.

**The Choices:** Disabled (default), Enabled.

### **HT Spread Spectrum**

**The Choices:** Disabled (default), Center, Down.

### **SSE/SSE2 Instructions**

**The Choices:** Enabled (default), Disabled.

### **System BIOS Cacheable**

Selecting the "Disabled " option allows caching of the system BIOS ROM at F0000h-FFFFFh which can improve system performance. However, any programs writing to this area of memory will cause conflicts and result in system errors.

**The Choices:** Disabled (default), Enabled.



## ***GeForce 6100-M9***

---

### **Primary / Secondary / Master / Slave PIO**

The IDE PIO (Programmed Input / Output) fields let you set a PIO mode (0-4) for each of the IDE devices that the onboard IDE interface supports. Modes 0 to 4 will increase performance progressively.

In Auto mode, the system automatically determines the best mode for each device.

**The Choices:** Auto (default), Mode0, Mode1, Mode2, Mode3, Mode4.

### **Primary / Secondary / Master / Slave UDMA**

Ultra DMA/100 functionality can be implemented if it is supported by the IDE hard drives in your system. As well, your operating environment requires a DMA driver (Windows 95 OSR2 or a third party IDE bus master driver). If your hard drive and your system software both support Ultra DMA/100, select Auto to enable BIOS support.

**The Choices:** Auto (default), Disabled.

### **IDE DMA Transfer Access**

**The Choices:** Enabled (default), Disabled.

### **Serial-ATA 1**

Enables support for Serial-ATA 1.

**The Choices:** Enabled (default), Disabled

### **SATA DMA transfer**

**The Choices:** Enabled (default), Disabled.

### **Serial-ATA 2**

Enables support for Serial-ATA 2.

**The Choices:** Enabled (default), Disabled

### **SATA2 DMA transfer**

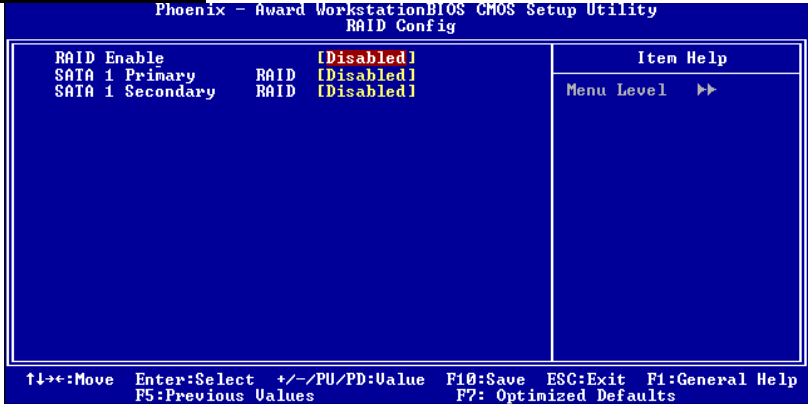
**The Choices:** Enabled (default), Disabled.

### **IDE Prefetch Mode**

**The Choices:** Enabled (default), Disabled.

**GeForce 6100-M9**

**RAID Configuration**



**RAID Enable**  
The Choices: Disabled (default), Enabled.

**SATA1 Primary/Secondary RAID**  
The Choices: Disabled (default), Enabled.

## GeForce 6100-M9

### Super IO Device

Phoenix - Award WorkstationBIOS CMOS Setup Utility SuperIO Device		
POWER ON Function	[BUTTON ONLY]	Item Help
KB Power ON Password	[Enter]	Menu Level >>
Hot Key Power ON	[Ctrl-F1]	
Onboard FDC Controller	[Enabled]	
Onboard Serial Port 1	[3F8/IRQ4]	
Onboard Serial Port 2	[Disabled]	
UART Mode Select	[Normal]	
UR2 Duplex Mode	[Half]	
Onboard Parallel Port	[378/IRQ7]	
Parallel Port Mode	[SPP]	
ECP Mode Use DMA	[3]	
↑↓←→:Move Enter:Select +/-/PU/PD:Value F10:Save ESC:Exit F1:General Help F5:Previous Values F7: Optimized Defaults		

#### POWER ON Function

This item allows you to choose the power on function.

**The Choices:** **Button ONLY** (default), Password, Hot Key, Mouse Left, Mouse Right, Any Key, Keyboard 98.

#### KB Power On Password

This item allows you to enter a password with at least 5 characters.

#### HOT Key Power On

This item allows you to set the hot key to power on system.

**The Choices:** **Ctrl-F1** (default), Ctrl-F2, Ctrl-F3, Ctrl-F4, Ctrl-F5, Ctrl-F6, Ctrl-F7, Ctrl-F8, Ctrl-F9, Ctrl-F10, Ctrl-F11, Ctrl-F12.

#### Onboard FDC Controller

Select Enabled if your system has a floppy disk controller (FDC) installed on the system board and you wish to use it. If install and FDC or the system has no floppy drive, select Disabled in this field.

**The Choices:** **Enabled** (default), Disabled.

#### Onboard Serial Port 1

Select an address and corresponding interrupt for the first and second serial ports.

**The Choices:** Disabled, **3F8/IRQ4** (default), 2F8/IRQ3, 3E8/IRQ4, 2E8/IRQ3, Auto.

#### Onboard Serial Port 2

Select an address and corresponding interrupt for the first and second serial ports.

**The Choices:** **Disabled** (default), 2F8/IRQ3, 3F8/IRQ4, 3E8/IRQ4, 2E8/IRQ3, Auto.

---

## ***GeForce 6100-M9***

---

### **UART Mode Select**

This item allows you to determine which Infra Red (IR) function of onboard I/O chip.

**The Choices:** **Normal** (default), AS KIR, IrDA.

### **UR2 Duplex Mode**

Select the value required by the IR device connected to the IR port.

Full-duplex mode permits simultaneous two-direction transmission.

Half-duplex mode permits transmission in one direction only at a time.

**The Choices:** **Half** (default), Full.

### **Onboard Parallel Port**

This item allows you to determine access onboard parallel port controller with which I/O Address.

**The Choices:** **378/IRQ7** (default), 278/IRQ5, 3BC/IRQ7, Disabled.

### **Parallel Port Mode**

The default value is SPP.

#### **The Choices:**

<b>SPP</b> (default)	Using Parallel port as Standard Printer Port.
<b>EPP</b>	Using Parallel Port as Enhanced Parallel Port.
<b>ECP</b>	Using Parallel port as Extended Capabilities Port.
<b>ECP+EPP</b>	Using Parallel port as ECP & EPP mode.

### **ECP Mode Use DMA**

Select a DMA Channel for the port.

**The Choices:** **3** (default), 1.

### **OnChip USB**

This option should be enabled if your system has a USB installed on the system board.

You will need to disable this feature if you add a higher performance controller.

**The Choices:** **V1. 1+V2. 0** (default), Disabled, V1.1

### **USB Memory Type**

**The Choices:** **SHADOW** (default), Base Memory (640k)

### **USB keyboard Support**

Enables support for USB attached keyboard.

**The Choices:** **Disabled** (default), Enabled

### **USB Mouse Support**

Enables support for USB attached mouse.

**The Choices:** **Disabled** (default), Enabled

---

## ***GeForce 6100-M9***

---

### **AC97 Audio**

This option allows you to control the onboard AC97 audio.

**The Choices:** **Auto** (default), Disabled.

### **MAC LAN**

This option allows you to change the state of the onboard MAC LAN.

**The Choices:** **Auto** (default), Disabled.

### **Onboard LAN Boot ROM**

This item allows you to enable or disable Onboard LAN Boot ROM.

**The Choices:** **Disabled** (default), Enabled.

### **MAC Media Interface**

**The Choices:** **Pin Strap** (default).MII.

### **Onboard 1394**

This item allows you to enable or disable the Onboard 1394 Controller.

**The Choices:** **Enabled** (default), Disabled.

### **IDE HDD Block Mode**

Block mode is also called block transfer, multiple commands, or multiple sector read / write. If your IDE hard drive supports block mode (most new drives do), select Enabled for automatic detection of the optimal number of block mode (most new drives do), select Enabled for automatic detection of the optimal number of block read / write per sector where the drive can support.

**The Choices:** **Enabled** (default), Disabled.

### **POWER After PWR-Fail**

This setting specifies whether your system will reboot after a power fail or interrupts occurs.

**Off**                Leaves the computer in the power off state.

**On**                Reboots the computer.

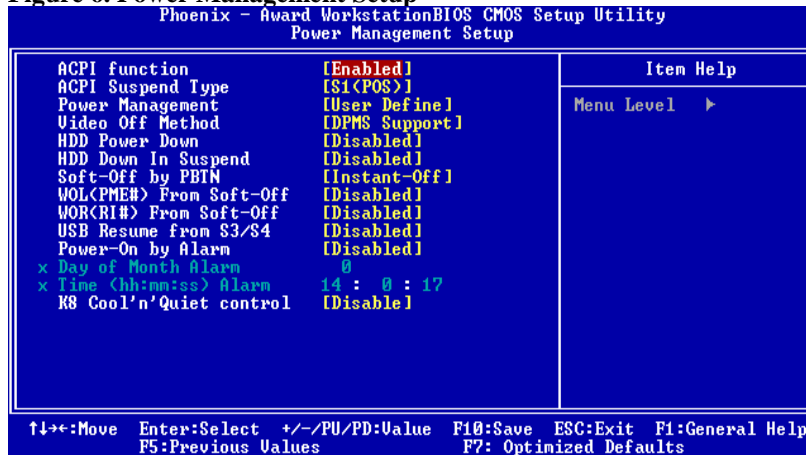
**Former-Sts**      Restores the system to the status before power failure or interrupt occurs.

**The Choices:** **Off** (default), On, Former-Sts.

## 6 Power Management Setup

The Power Management Setup Menu allows you to configure your system to utilize energy conservation and power up/power down features.

### ■ Figure 6. Power Management Setup



### ACPI function

This item displays the status of the Advanced Configuration and Power Management (ACPI).

**The Choices:** Enabled (default), Disabled.

### ACPI Suspend Type

The item allows you to select the suspend type under the ACPI operating system.

**The Choices:** S1 (POS) (default) Power on Suspend  
S3 (STR) Suspend to RAM  
S1+S3 POS+STR

### Power Management

This category allows you to select the type (or degree) of power saving and is directly related to the following modes:

1.HDD Power Down.

2.Suspend Mode.

There are four options of Power Management, three of which have fixed mode settings

Min. Power Saving

Minimum power management.

Suspend Mode = 1 hr.

HDD Power Down = 15 min



## ***GeForce 6100-M9***

---

### **Max. Power Saving**

Maximum power management only available for sl CPU's.

Suspend Mode = 1 min.

HDD Power Down = 1 min.

### **User Define (default)**

Allows you to set each mode individually.

When not disabled, each of the ranges is from 1 min. to 1 hr. except for HDD

Power Down which ranges from 1 min. to 15 min. and disable.

### **Video Off Method**

This option determines the manner in which the monitor is goes blank.

**V/H SYNC+Blank**

This selection will cause the system to turn off the vertical and horizontal synchronization ports and write blanks to the video buffer.

**Blank Screen**

This option only writes blanks to the video buffer.

**DPMS (default)**

Initial display power management signaling.

The Choices: Stop Grant, PwrOn Suspend.

### **HDD Power Down**

When enabled, the hard disk drive will power down and after a set time of system inactivity.

All other devices remain active.

**The Choices: Disabled** (default), 1 Min, 2 Min, 3 Min, 4 Min, 5 Min, 6 Min, 7 Min, 8 Min, 9 Min, 10 Min, 11 Min, 12 Min, 13 Min, 14 Min, 15Min.

### **HDD Down In Suspend**

**The Choices: Disabled** (default), Enable.

### **Soft-Off by PWR-BTTN**

Pressing the power button for more than 4 seconds forces the system to enter the Soft-Off state when the system has "hung."

**The Choices: Delay 4 Sec, Instant-Off** (default).

### **WOL (PME#) From Soft-Off**

**The Choices: Disabled** (default), Enabled.

### **WOR (RI#) From Soft-Off**

**The Choices: Disabled** (default), Enabled.

## ***GeForce 6100-M9***

---

### **USB Resume from S3/S4**

**The Choices:** Disabled (default), Enabled.

### **Power-On by Alarm**

When you select Enabled, an alarm returns the system to Full ON state.

**The Choices:** Disabled (default), Enabled.

### **K8 Cool'n' Quiet Control**

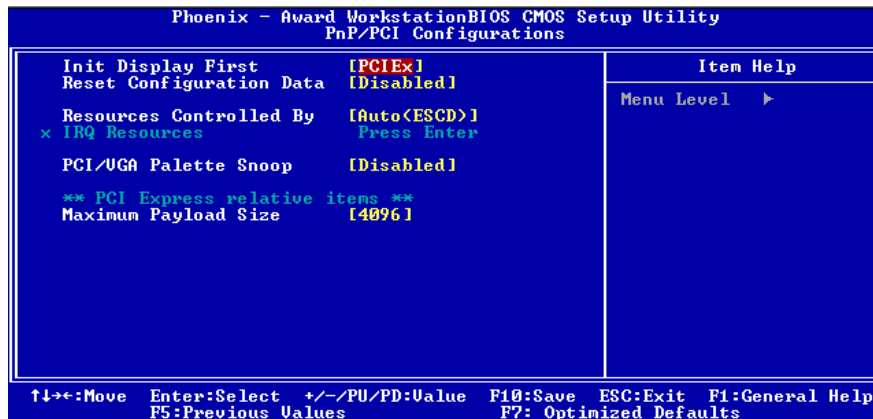
This function supports AMD Cool 'n' Quick function.

**The Choices:** Disabled (default), Auto.

## 7 PnP/PCI Configurations

This section describes configuring the PCI bus system. PCI, or Personal Computer Interconnect, is a system which allows I/O devices to operate at speeds nearing the speed of the CPU itself uses when communicating with its own special components. This section covers some very technical items and it is strongly recommended that only experienced users should make any changes to the default settings.

### ■ Figure 7. PnP/PCI Configurations



#### Init Display First

With systems that have multiple video cards, this option determines whether the primary display uses a PCI Slot or an AGP Slot.

**The Choices:** PCI Ex (default), PCI Slot, Onboard.

#### Reset Configuration Data

The system BIOS supports the PnP feature which requires the system to record which resources are assigned and protects resources from conflict. Every peripheral device has a node, which is called ESCD. This node records which resources are assigned to it. The system needs to record and update ESCD to the memory locations. These locations (4K) are reserved in the system BIOS. If the Disabled (default) option is chosen, the system's ESCD will update only when the new configuration varies from the last one. If the Enabled option is chosen, the system is forced to update ESCDs and then is automatically set to the "Disabled" mode. The above settings will be shown on the screen only if "Manual" is chosen for the resources controlled by function. Legacy is the term, which signifies that a resource is assigned to the ISA Bus and provides non-PnP ISA add-on cards. PCI / ISA PnP signifies that a resource is assigned to the PCI Bus or provides for ISA PnP add-on cards and peripherals.

**The Choices:** Disabled (default), Enabled.

---

## ***GeForce 6100-M9***

---

### **Resources Controlled By**

By Choosing “**Auto(ESCD)**” (default), the system BIOS will detect the system resources and automatically assign the relative IRQ and DMA channel for each peripheral. By Choosing “**Manual**”, the user will need to assign IRQ & DMA for add-on cards. Be sure that there are no IRQ/DMA and I/O port conflicts.

### **IRQ Resources**

This submenu will allow you to assign each system interrupt a type, depending on the type of device using the interrupt. When you press the “Press Enter” tag, you will be directed to a submenu that will allow you to configure the system interrupts. This is only configurable when “Resources Controlled By” is set to “Manual”.

IRQ-3	assigned to	PCI Device
IRQ-4	assigned to	PCI Device
IRQ-5	assigned to	PCI Device
IRQ-7	assigned to	PCI Device
IRQ-9	assigned to	PCI Device
IRQ-10	assigned to	PCI Device
IRQ-11	assigned to	PCI Device
IRQ-12	assigned to	PCI Device
IRQ-14	assigned to	PCI Device
IRQ-15	assigned to	PCI Device

### **PCI / VGA Palette Snoop**

Choose Disabled or Enabled. Some graphic controllers which are not VGA compatible take the output from a VGA controller and map it to their display as a way to provide boot information and VGA compatibility.

However, the color information coming from the VGA controller is drawn from the palette table inside the VGA controller to generate the proper colors, and the graphic controller needs to know what is in the palette of the VGA controller. To do this, the non-VGA graphic controller watches for the Write access to the VGA palette and registers the snoop data. In PCI based systems, where the VGA controller is on the PCI bus and a non-VGA graphic controller is on an ISA bus, the Write Access to the palette will not show up on the ISA bus if the PCI VGA controller responds to the Write.

In this case, the PCI VGA controller should not respond to the Write, it should only snoop the data and permit the access to be forwarded to the ISA bus. The non-VGA ISA graphic controller can then snoop the data on the ISA bus. Unless you have the above situation, you should disable this option.

<b>Disabled</b> (default)	Disables the function.
Enabled	Enables the function.

## ***GeForce 6100-M9***

---

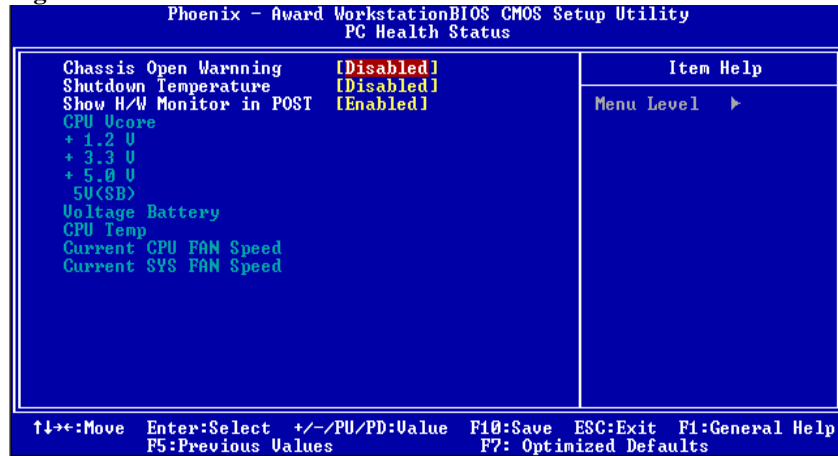
### **Maximum Payload Size**

Set the maximum payload size for Transaction packets (TLP).

**The Choice: 4096** (default.)

## 8 PC Health Status

■ Figure 8. PC Health Status



### Chassis Open Warning

This item allows you to enable or disable Chassis Open Warning beep.

**The Choices:** Disabled (Default), Enabled.

### Shutdown Temperature

This item allows you to set up the CPU shutdown Temperature. This item only effective under Windows 98 ACPI mode.

**The Choices:** Disabled (default), 60°C/140F, 65°C/149F, 70°C/158F, 75°C/167F.

### Show H/W Monitor in POST

If your computer contains a monitoring system, it will show PC health status during POST stage. The item offers several delay time for you to choose.

**The Choices:** Enabled (default), Disabled.

### CPU Vcore/ +1.2V+3.3V/ +5.0V/5V<SB>/ Voltage Battery

Detect the system's voltage status automatically.

### CPU Temperature

This field displays the current temperature of the CPU.

## ***GeForce 6100-M9***

---

### **Current CPU FAN Speed**

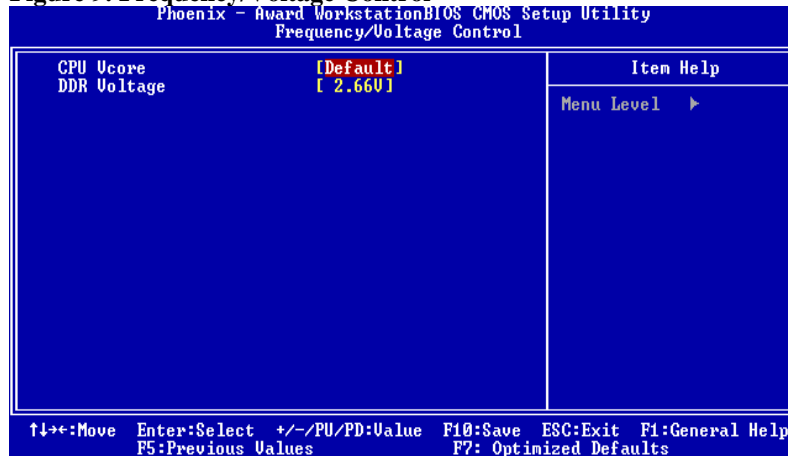
This field displays the current speed of CPU fan.

### **Current SYS FAN Speed**

This field displays the current speed SYSTEM fan.

## 9 Frequency/Voltage Control

■ Figure 9. Frequency/Voltage Control



### CPU Vcore

Detect the system's voltage status automatically.

**The Choices:** **Default** (default), +0.15V, +0.10V, +0.05V.

### DDR Voltage

This item allows you to select DDR Voltage Control.

**The Choices:** **2.66V** (default), 2.93V, 2.28V, 2.72V.