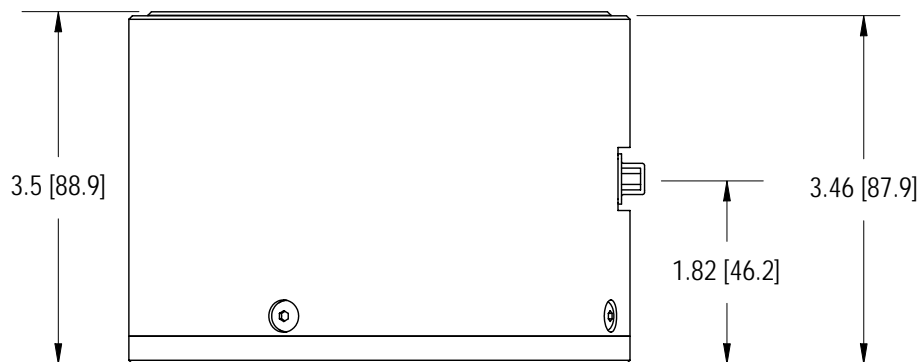
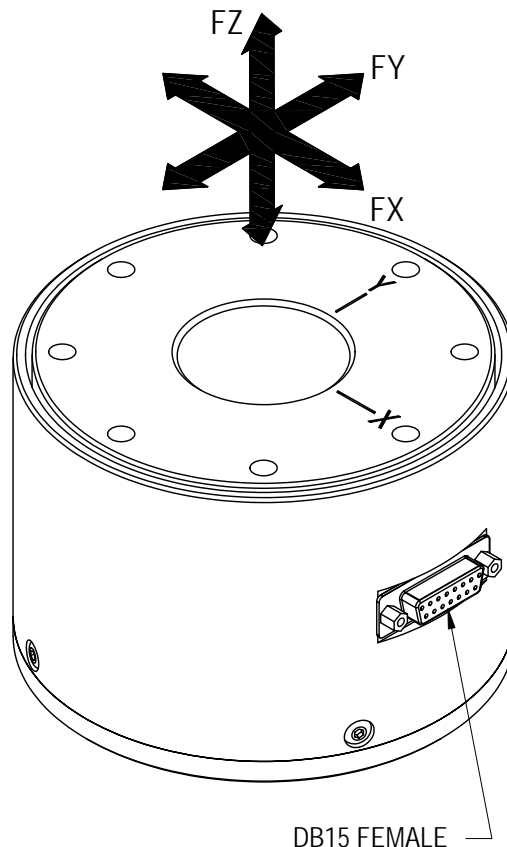
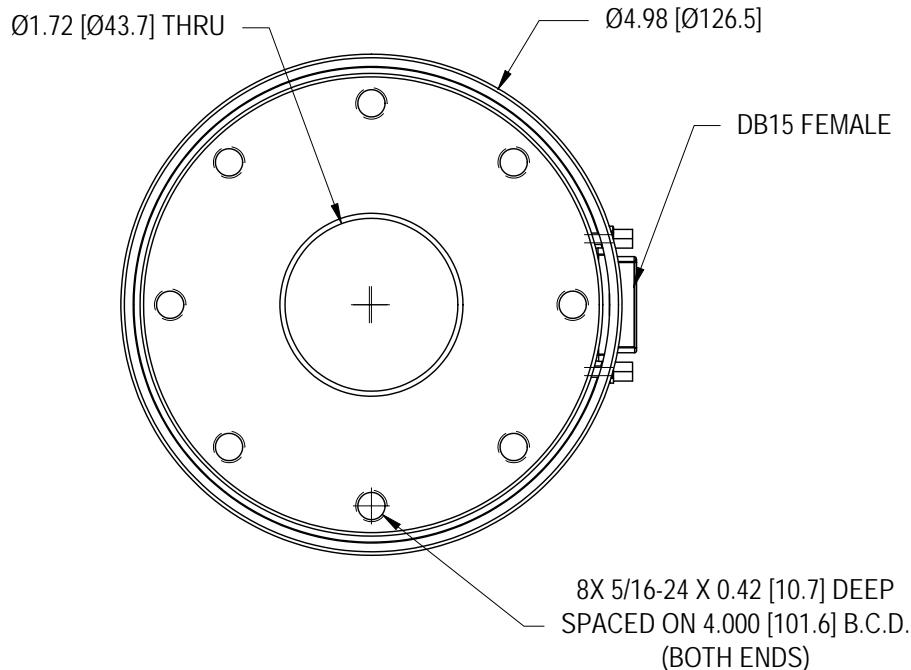


FUTEK MODEL MTA600
STK# FSH02250

TRI AXIAL LOAD CELL F_x , F_y , F_z

Drawing Number: FI1194

INCH [mm] R.O.= Rated Output



SPECIFICATIONS:

RATED OUTPUT	1.50 mV/V nom (F_x , F_y) ; 0.75 mV/V nom (F_z)
CAPACITY	2500 lb [1134 kg] (F_x , F_y) ; 5000 lb [2268 kg] (F_z)
SAFE OVERLOAD	150% of R.O.
ZERO BALANCE	$\pm 1\%$ of R.O.
EXCITATION (VDC OR VAC)	18 MAX
BRIDGE RESISTANCE	350 Ω (F_x , F_y) 700 Ω (F_z)
NONLINEARITY	$\pm 0.5\%$ of R.O.
HYSTERESIS	$\pm 0.5\%$ of R.O.
NONREPEATABILITY	$\pm 0.2\%$ of R.O.
TEMP. SHIFT ZERO	$\pm 0.02\%$ of R.O./ $^{\circ}$ F (0.036% of R.O./ $^{\circ}$ C)
TEMP. SHIFT SPAN	$\pm 0.02\%$ of LOAD/ $^{\circ}$ F (0.036% of LOAD/ $^{\circ}$ C)
COMPENSATED TEMP.	60 to 160 $^{\circ}$ F (15 to 71 $^{\circ}$ C)
OPERATING TEMP.	0 to 160 $^{\circ}$ F (-17 to 71 $^{\circ}$ C)
WEIGHT	8 lb
MATERIAL	17-4 PH S.S. Construction
CONNECTOR:	DB15 FEMALE
ACCESSORIES AND RELATED INSTRUMENTS AVAILABLE	
CALIBRATION (STD)	5 pt. COMPRESSION; 75K Ω (F_x , F_y) 200K Ω (F_z)
CALIBRATION EXCITATION:	10 VDC

PIN	CODE	CHANNEL #
1	+E	1 (F_x)
2	-E	
3	-S	
4	+S	2 (F_y)
5	+E	
6	-E	
7	-S	3 (F_z)
8	+S	
9	+E	
10	-E	3 (F_z)
11	-S	
12	+S	