

FUTEK MODEL LLW605
STK# FSH01854

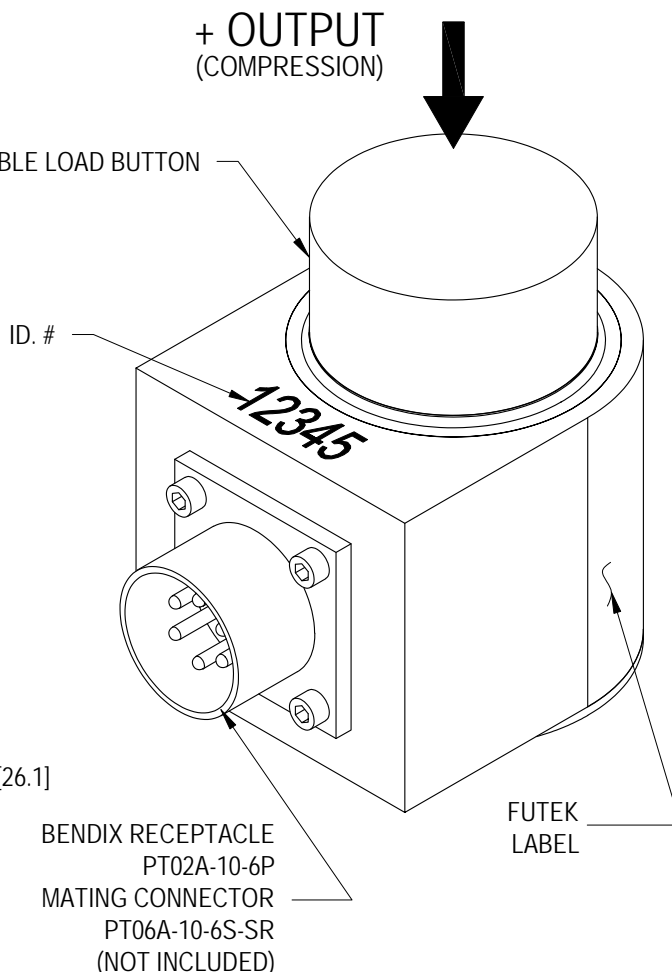
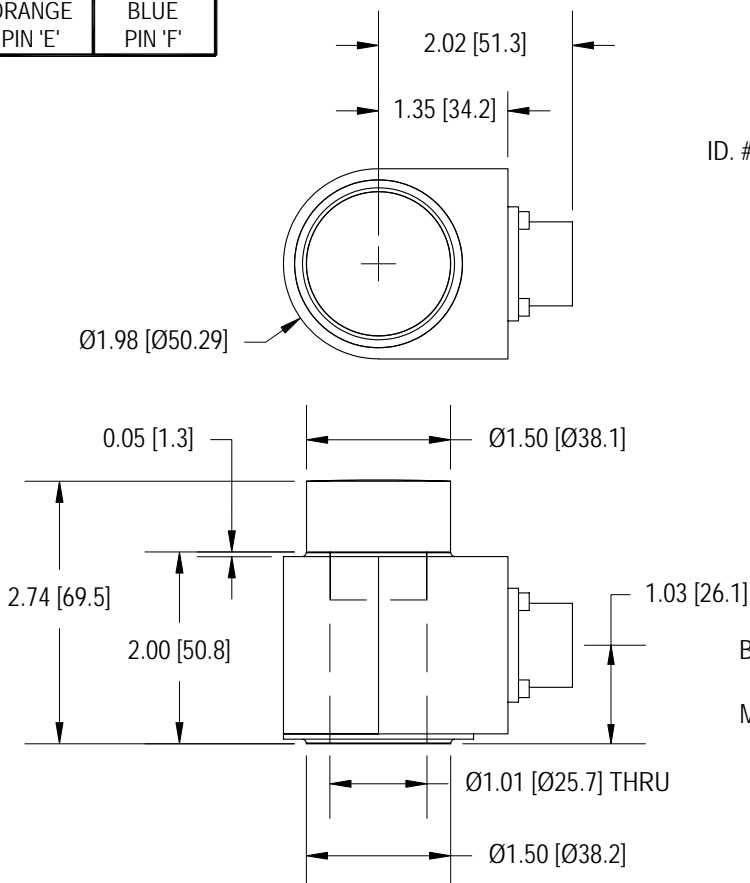
DONUT/ THRU HOLE COMPRESSION ONLY LOAD CELL W/ REMOVABLE LOAD BUTTON
(Previously Q07474)

Drawing Number: FI1129

INCH [mm] R.O.= Rated Output

WIRING CODE (CC1)

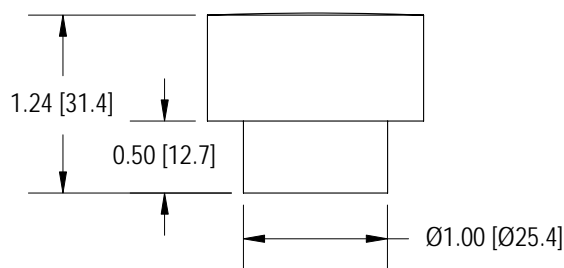
| +Excitation | -Excitation | +Signal | -Signal |
|-------------------|------------------|------------------|------------------|
| RED PIN 'A' | BLACK PIN 'B' | GREEN PIN 'C' | WHITE PIN 'D' |
| +Sense | -Sense | | |
| ORANGE PIN 'E' | BLUE PIN 'F' | | |



SPECIFICATIONS:

| | |
|--|---|
| RATED OUTPUT | 2 mV/V nom. |
| CAPACITY | 50 klb [222 kN] |
| SAFE OVERLOAD | 150% of R.O. |
| ZERO BALANCE | ±1% of R.O. |
| EXCITATION (VDC OR VAC) | 18 MAX |
| BRIDGE RESISTANCE | 350 Ω nom. |
| NONLINEARITY | ±0.5% of R.O. |
| HYSTERESIS | ±0.5% of R.O. |
| NONREPEATABILITY | ±0.1% of R.O. |
| TEMP. SHIFT ZERO | ±0.005% of R.O./°F [0.01% of R.O./°C] |
| TEMP. SHIFT SPAN | ±0.005% of LOAD/°F [0.01% of LOAD/°C] |
| COMPENSATED TEMP. | 60 to 160°F [15 to 72°C] |
| OPERATING TEMP. | -40 to 200°F [-40 to 93°C] |
| WEIGHT | 50 oz [1417 g] |
| MATERIAL (FLEXURE) | 17-4PH S.S. |
| MATERIAL (COVER) | ALUMINUM |
| DEFLECTION | 0.001 [0.03] nom. |
| CONNECTOR: BENDIX 6 Pin Receptacle | |
| ACCESSORIES AND RELATED INSTRUMENTS AVAILABLE | |
| CALIBRATION (STD) | 5 pt. COMPRESSION; 60.4K Ω SHUNT CAL. VALUE |
| CALIBRATION TEST EXCITATION | 10 VDC |

STK# MCP01273
REMOVABLE LOAD BUTTON



FUTEK
ADVANCED SENSOR TECHNOLOGY, INC.

This drawing is submitted solely for the information and exclusive use of the original addressee. It is not to be divulged in whole or in part, by any firm or individual without written permission from FUTEK.

10 THOMAS
IRVINE, CA 92618 USA
1-800-23-FUTEK (38835)

INTERNET:
<http://www.futek.com>