

FUTEK MODEL LLW470  
STK# FSH00766

Drawing Number: FI1088

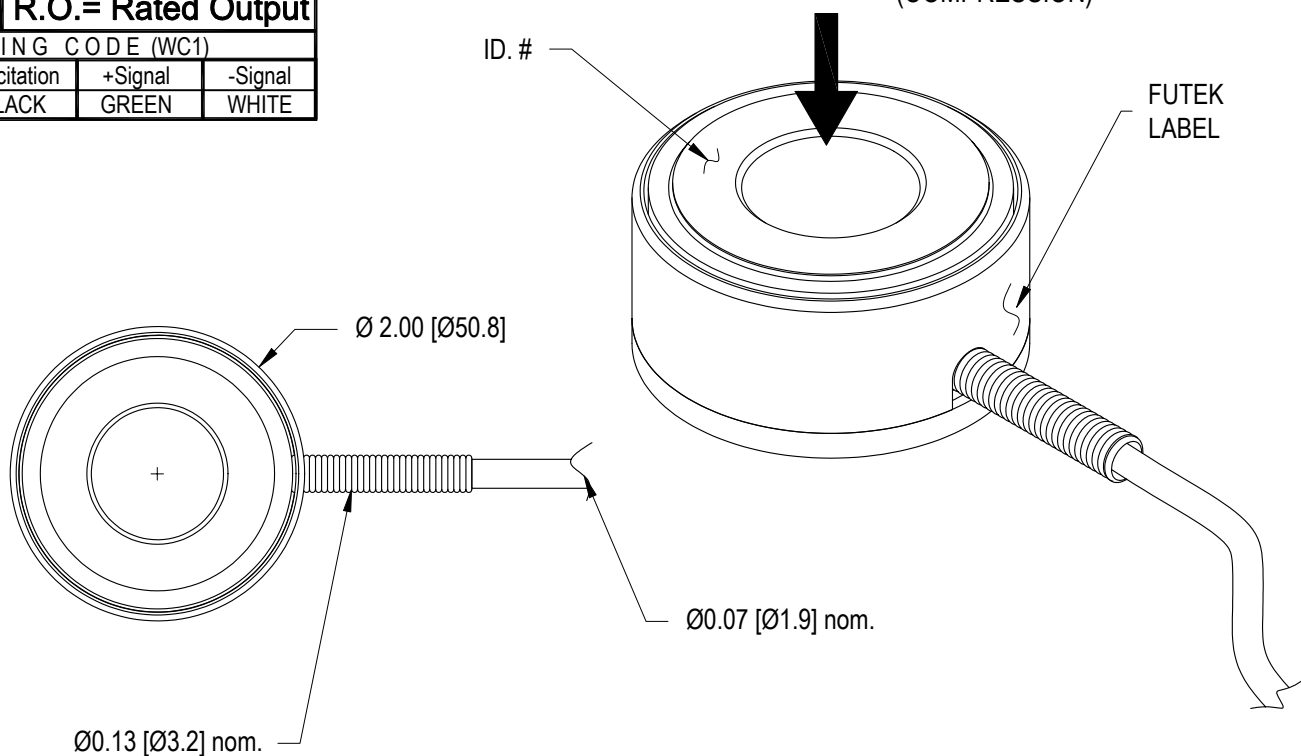
INCH [mm] | R.O.= Rated Output

WIRING CODE (WC1)

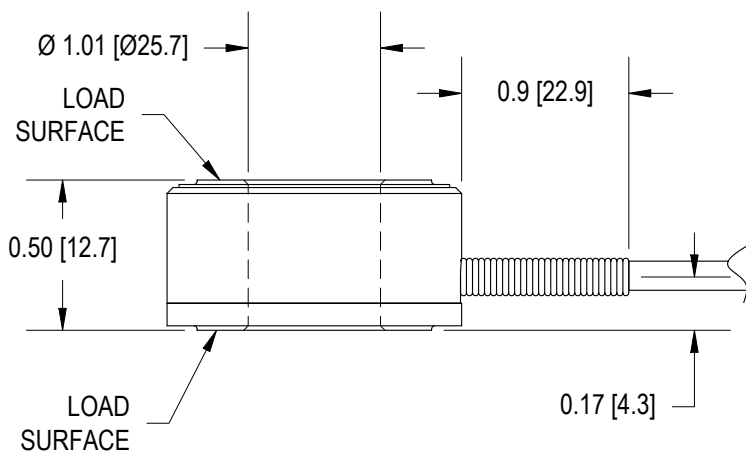
+Excitation	-Excitation	+Signal	-Signal
RED	BLACK	GREEN	WHITE

# FORCE/LOAD WASHER LOAD CELL (Previously L2700)

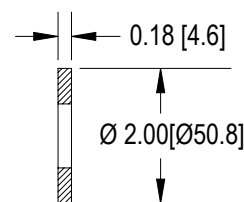
+ OUTPUT  
(COMPRESSION)



MOUNTING SURFACES SHOULD BE FLAT AND  
PARALLEL FOR OPTIMUM PERFORMANCE



HARDENED WASHER  
STK# MCP00726



## SPECIFICATIONS:

RATED OUTPUT	2 mV/V nom.
CAPACITY	80klb [356kN]
SAFE OVERLOAD	150% of R.O.
ZERO BALANCE	±10% of R.O.
EXCITATION (VDC OR VAC)	18 MAX
BRIDGE RESISTANCE	350 Ω nom.
TEMP. SHIFT ZERO	±0.02% of R.O./°F [0.036% of R.O./°C]
TEMP. SHIFT SPAN	±0.01% of LOAD/°F [0.018% of LOAD/°C]
COMPENSATED TEMP.	60 to 160°F [15 to 72°C]
OPERATING TEMP.	-45 to 200°F [-42 to 93°C]
MATERIAL	17-4PH S.S.
DEFLECTION	0.001 [0.03] nom.
BOLT SIZE	1 in.
CABLE:#29 AWG, 4 Conductor, Spiral Shielded Teflon Cable 10 ft [3 m] Long	
ACCESORIES AND RELATED INSTRUMENTS AVAILABLE	
CALIBRATION (STD)	5 pt. COMPRESSION; 60.4 KΩ SHUNT CAL. VALUE
CALIBRATION TEST EXCITATION	10 VDC

**FUTEK**  
ADVANCED SENSOR TECHNOLOGY, INC.

This drawing is submitted solely for the information and exclusive use of the original addressee. It is not to be divulged in whole or in part, by any firm or individual without written permission from FUTEK

10 THOMAS  
IRVINE, CA 92618 USA  
1-800-23-FUTEK (38835)

INTERNET:  
<http://www.futek.com>