

# FUTEK MODEL LCF770

Drawing Number: FI1282-A

INCH [mm] | R.O.= Rated Output

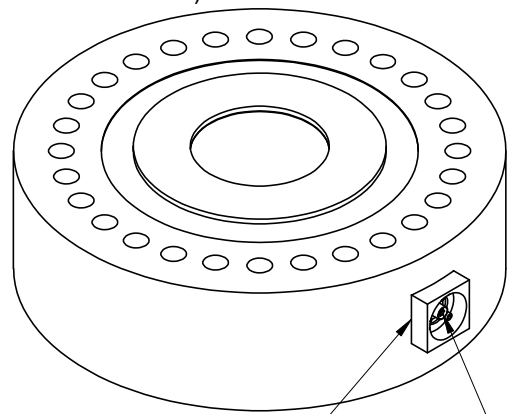
## WIRING CODE (CC1)

+Excitation	-Excitation	+Signal	-Signal
RED PIN 'A'	BLACK PIN 'B'	GREEN PIN 'C'	WHITE PIN 'D'

+Sense	-Sense
ORANGE PIN 'E'	BLUE PIN 'F'

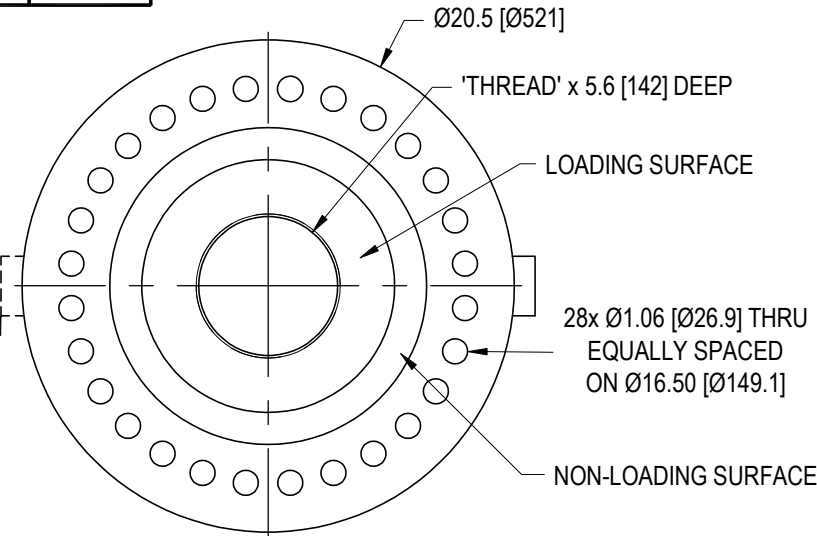
# UNIVERSAL PANCAKE LOADCELL

+OUTPUT  
(TENSION)  
-OUTPUT  
(COMPRESSION)

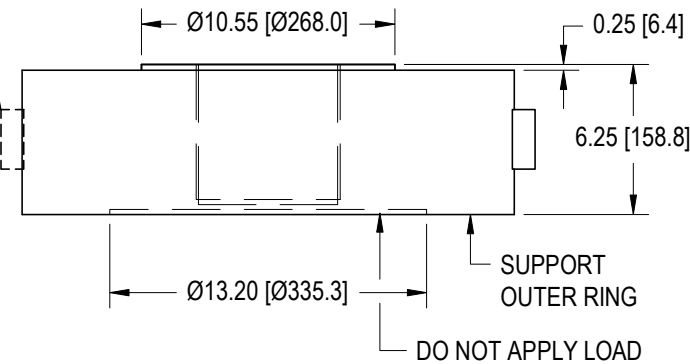


REMOVABLE  
CONNECTOR  
GUARDS

BENDIX RECEPTACLE  
PT02E-10-6P  
MATING CONNECTOR  
PT06A-10-6S-SR  
(NOT INCLUDED)



OPTIONAL DUAL BRIDGE



SEE LCF775 FOR VERSION  
WITH TENSION BASE

## SPECIFICATIONS:

RATED OUTPUT  
CAPACITY  
SAFE OVERLOAD  
ZERO BALANCE  
EXCITATION  
BRIDGE RESISTANCE  
NONLINEARITY  
HYSTERESIS  
NONREPEATABILITY  
TEMP. SHIFT ZERO  
TEMP. SHIFT SPAN  
COMPENSATED TEMP.  
OPERATING TEMP.  
WEIGHT  
MATERIAL  
CONNECTOR: 6 Pin Bendix Receptacle, PT02E-10-6P

4 mV/V nom.  
1000 Klb [4500 kN]  
150% of R.O.  
±1% of R.O.  
20 VDC max.  
350  $\Omega$  nom.  
±0.2% of R.O.  
±0.2% of R.O.  
±0.02% of R.O.  
±0.005% of R.O./°F (0.01% of R.O./°C)  
±0.005% of LOAD/°F (0.01% of LOAD/°C)  
60 to 160°F (15 to 72°C)  
-60 to 200°F (-50 to 93°C)  
approx. 500 lbs  
Alloy Steel  
NIST Traceable 5pts. Compression  
30K  $\Omega$  Shunt  
NIST Traceable 5pts. Tension  
10 VDC

ACCESSORIES AND RELATED INSTRUMENTS AVAILABLE  
CALIBRATION (STD)

CALIBRATION (OPT)  
CALIBRATION TEST EXCITATION

ITEM NO:	THREAD	DUAL BRIDGE
FSH02681	6-8-3B	
FSH02682		X
FSH02909	M150x4-4H	
FSH02910		X

**FUTEK**  
ADVANCED SENSOR TECHNOLOGY, INC.

This drawing is submitted solely for the information and exclusive use of the original addressee. It is not to be divulged in whole or in part, by any firm or individual without written permission from FUTEK  
CAGE CODE # 1X8M6

10 THOMAS  
IRVINE, CA 92618 USA  
1-800-23-FUTEK (38835)

INTERNET:  
<http://www.futek.com>