



INSTALLATION, CARE & MAINTENANCE GUIDE

FORMICA LAMINATE FLOORING



Formica® Laminate Flooring Commercial Collection

In keeping with today's commercial interior design requirements, flooring must be visually appealing yet functional. From the modern environment, to the formality of a corporate office, Formica Laminate Flooring has the range and style to enhance any commercial environment.

Formica Laminate Flooring is one of the most comprehensive and economical flooring ranges available. Developed for the Australian market, it incorporates European style with the latest in laminate flooring technology. Formica Laminate Flooring provides design professionals with greater choice than ever before with a range of 20 decors, and many special options available on request. The collection features a range of embossed finishes delivering a beautifully authentic appearance rarely achieved by any other laminate flooring.

Index

Page 4	Pre-Installation Checklist
Page 5	Sub-Floor Preparation
Page 5	Accessories Needed
Page 6	Additional Accessories Recommended
Page 6	Tools Needed
Page 7	Room Calculator
Page 8	Flooring Installation
Page 12	Trim Guide
Page 12	Profiles
Page 13	End Profile Transitions
Page 15	Recommended Accessories
Page 15	Important Product Information
Page 16	Cleaning the Floor
Page 16	Care & Maintenance
Page 17	Flooring Options
Page 17	Technical Information
Page 18	Limited Warranty Information

Pre-installation checklist

- Formica Laminate Flooring is to be laid as a floating floor. **It must not be glued or nailed onto the sub-floor.**
 - Defective planks must not be laid. Carefully check each plank before installing. Planks that are damaged or do not fit together are to be returned to the retailer for replacement.
 - **Do not heat or air condition the building prior to and during the installation period.** Only open one pack at a time when installing the flooring.
 - **Leave an expansion gap around the perimeter of the laid floor.**
 - Floor area 1m² – 100m²: requires 10mm gap
 - Floor area 100m² – 200m²: requires 20mm gap
 - Floor area 200m² – 300m²: requires 30mm gap
 - Floor area 300m² or greater: install an expansion profile to divide the floor into even parts.
- Note:** around pipes, columns and door jams that obstruct the floor leave an expansion gap of 10mm. Fill the gap with Unika ColorSealant.
- Formica Laminate Flooring must be laid with an expansion gap between door frames separating different rooms. Allow for a 20mm gap between the door frame and cover the gap with an expansion profile.
- Note:** for flooring laid in high moisture areas – kitchens, cafes, restaurants, bars and hairdressing salons - Formica Lock Seal must be used between planks.
- Ensure that an allowance of 5% extra flooring is added to the amount of flooring to be laid to cover wastage during the installation process.
 - Formica Laminate Flooring planks should be laid along the length of the floor, so as to maximise the appearance of the floor's pattern.
 - Check that you have all the correct accessories and tools to complete the installation - refer to pages 5 & 6.
 - For further information on laying Formica Laminate Flooring please refer to the Formica Laminate Flooring installation DVD or visit www.formica.com.au
 - For the complete colour range, please refer to the Formica Laminate Flooring Consumer and Commercial Brochures.

Important Point

- If the counter bench top or furniture weighs more than 500kg, then the floor must be divided into areas of less than 150m² using a Multifloor Trim.
- Retail shop fixtures cannot be fixed to the laminate floor.
- A commercial grade skirting product may need to be used to conceal the floor's perimeter expansion gap.

Sub-floor preparation

- All sub-floors (concrete, solid timber floor boards, plywood, particleboard, vinyl, cork & ceramic tiles) must be level, clean and dry.
- Carpets are not suitable sub-floors.
- Existing sub-floors must be checked to ensure they are securely fixed and level. If any parts of the existing sub-floor are loose it must be re-fixed prior to installing Formica Laminate Flooring.
- Depressions in the sub-floor must not exceed 3mm under a 1m straight edge. Depressions greater than 3mm must be filled in with a floor levelling compound.
- Formica Flooring Underlay must be laid over all existing sub-floors.
- Formica Flooring Underlay should be laid along the length of the room.

Accessories needed

- Formica Flooring Underlay (with self adhesive strip) laid on top of sub-floor for moisture protection and insulation.
- Installation Spacers, such as plastic wedges used for expansion gaps.
- Unika Multifloor Trim, used as a threshold between doorways or when dividing the floor into multiple sections.
- Quad Beading is used to conceal the expansion gap left around the perimeter of the laid floor and skirting board. Note: The quad base must be minimum of 20mm to effectively cover a typical expansion gap.
- Lock Seal Adhesive Sealant is used for joining cut-off pieces around pipes, columns and for joining planks in high moisture areas.
- Ensure you have the correct quantity of accessories to complete the installation. Please refer to page 7 of this brochure or visit www.formica.com.au for a copy of the Flooring Planner.

Additional accessories recommended for installation, care & maintenance

- Lock Seal Adhesive Sealant adds water resistance to floor joints in areas susceptible to accidental water spillage.
- Unika ColorSealant fills expansion joints.
- Unika Deep Cleaner is a specially developed deep cleaner for laminate flooring. Recommended for use every six months or following heavy soiling.
- Unika Zip Clean is a regular cleaning product for laminate flooring. Recommended for use weekly.
- Unika ColorFill repairs chips and scratches for laminate flooring.

Tools needed

- Pencil & set square to draw straight lines.
- Sharp knife to cut the Formica Flooring Underlay.
- Saw & hammer.
- Measuring tape & 2m straight edge ruler.
- Electric drill.
- Long thin nails approx 30mm, used to affix Quad Beading onto skirting board (or liquid nail adhesive for cement walls).
- Screws and screw driver for affixing Multifloor Trim.

PLANNER: What you need to get the job done

FORMICA LAMINATE FLOORING ROOM CALCULATOR

ROOM NAME	LENGTH	WIDTH	m ² (LxW)
Room 1			
Room 2			
Room 3			
Total of each column =	A	B	C
Add 5% extra for wastage to part C figure $D = C + 5\%$			D
Divide part D figure by the number below that corresponds to the thickness of flooring selected, e.g. $D \div 2.7$. This calculates the approximate quantity of packs required. 6mm = 2.7 7mm = 2.1 8mm = 1.9 10mm = 1.3 12mm = 1.3			

FORMICA LAMINATE FLOORING ACCESSORIES CALCULATOR

PRODUCT	E Room calculator	F Pack qty	G Amount needed
Formica Flooring Underlay (laid on top of the sub-floor underneath Formica Laminate Flooring for moisture protection and sound insulation)		30m ² per roll (i.e. ÷ by 30)	
	Total part D		No. of rolls
Quad Beading (used to conceal the expansion gap left around the perimeter of the laid floor & skirting board)		Quad beading comes in 2.4m lengths (i.e. ÷ by 2.4)	
	$= (2 \times A) + (2 \times B)$		No. of lengths
ColorSealant (used to fill expansion joins/gaps)		1 cartridge will cover 10-12 lineal metres (i.e. ÷ by 10)	
	$= (2 \times A) + (2 \times B)$		No. of cartridges
Multifloor Trim (used as threshold between doorways. When dividing the floor into sections. Available in 900mm or 1800mm)		900mm for each doorway	
	No. of doorways		No. of trims
Lock Seal Adhesive Sealant (used for joining cut-off pieces around pipes, columns and doorways. For joining planks in areas of high moisture or accidental spills)		500ml bottle = 50 lineal metres (5 packs)	
	Room Specific		No. of bottles

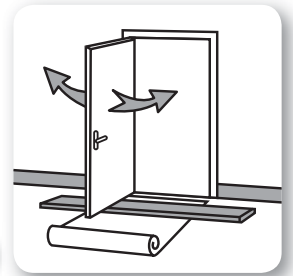
Note: We recommend the use of Unika brand of accessories and cleaning products to be used with Formica Laminate Flooring.

Flooring installation

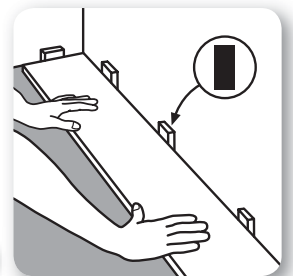
Note: Do not use a tapping block or pull bar in the installation of Formica Laminate Flooring. Under no circumstances use a hammer to connect the planks, as this will damage the locking system.

Step 1: Prepare the sub-floor as per the instructions listed in the sub-floor preparation section. Do not remove the skirting board. Use quad beading to conceal the perimeter expansion gap.

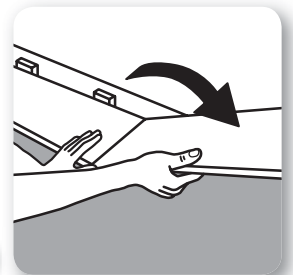
Step 2: (refer diagram 1) Check the bottom of the door fits over the laminate floor and underlay. If the door touches the plank the door will need to be trimmed.



Step 3: (refer diagram 2) Start laying the planks from the left corner, working left to right. Place the plank with the groove on the end and side facing the wall. (Note: the protruding long lip on the side referred to as the tongue should be facing you and not the wall). Then insert installation spacers for the perimeter expansion gap. Refer to the Pre-installation Check List for the correct gap depending on floor size.



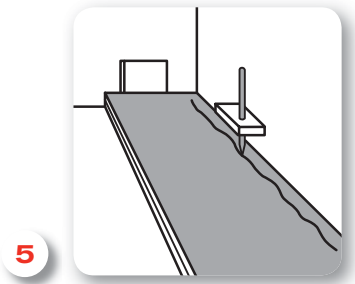
Step 4: (refer diagram 3) Connect the next plank in the row by placing the groove on the end into the end tongue of the adjoining plank. Repeat until you reach the end of the row. Continue to place installation spacers at 300mm intervals along wall.



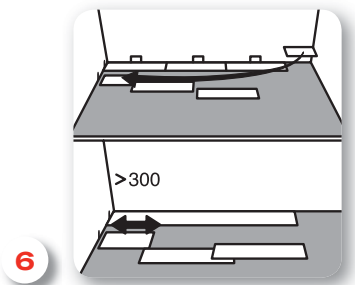
Step 5: (refer diagram 4) For the last piece in the row, place the tongue side of the plank to face the tongue of the adjoining plank with the groove on the end to face the wall. Insert installation spacer to allow for expansion gap, and then mark where the plank is to be cut. Once cut, the plank with the groove on the end is connected into the end tongue of the adjoining plank. (refer diagram 3). Note: When cutting planks face the decorative side down when using a jigsaw. When using a handsaw face the decorative side up. Always use a sharp fine saw tooth.



Step 6: (refer diagram 5) Before starting the next row check the first row is straight with a string line or 2m straight edge ruler, aligned against the protruding tongue. More installation spacers may be needed to make the first row straight. Should the wall be too uneven, then the line of the wall must be marked onto the plank surface and the plank cut length wise to fit the profile of the wall.

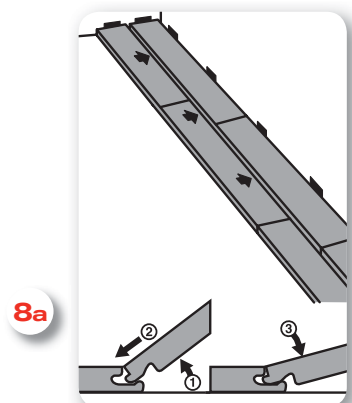
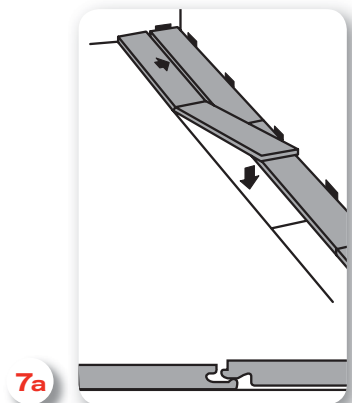


Step 7: (refer diagram 6) To start the next row, use the off cut from the previous row or use a new plank. Ensure minimum length is 300mm.



6mm, 7mm & 8mm planks (Angle – Angle locking)

Step 8: Connect the planks of the second row end to end and place them on top of the bottom lip of the protruding tongue (refer diagram 7a). Then lift the planks gently and slot into the protruding tongue of the adjoining row of planks, working left to right (refer diagram 8a) **Note:** you may need to use a masking tape to hold down the planks already laid so they do not move. Once the planks are connected in the row you can remove the tape.



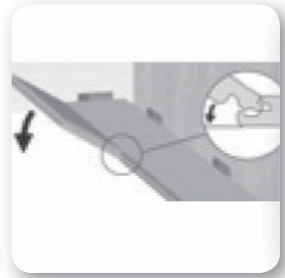
Important:

For 6mm, 7mm & 8mm planks only. Please refer to page 10 for 10mm & 12mm planks.

10mm & 12mm planks (Angle – Drop locking)

Step 8: (refer diagrams 7b & 8b). Insert the panel at an angle of approximately 25° and lower the panel to lock it into place. No glue required. Repeat this process with all successive planks.

7b



8b



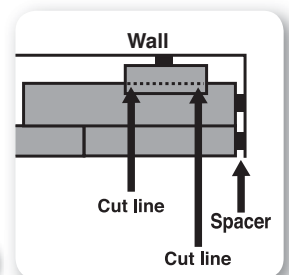
Important:

For 10mm & 12mm planks only. Please refer to page 9 for 6mm, 7mm & 8mm planks.

Step 9: (refer diagram 9) When laying the last row using the off-cut from the previous row – turn the plank over with the groove side facing the wall and the decorative side facing down. Then mark a line indicating where to cut away. Ensure installation spacers are placed against wall for required expansion gap.

Once the plank has been cut, take the piece with the groove side (decorative side facing up) and place on top of the bottom lip of the protruding tongue and repeat step 8.

9



Step 10: Fitting around door jams and between door frame: Allow for a 10mm expansion gap when laying planks around door jams. Then fill in the gap with Unika ColorSealant (as per the instructions on the tube/cartridge) colour matched to the laminate floor. (Same technique as for ceramic floor tiles). Allow a 20mm expansion gap for door frames between different rooms and cover the gap with an expansion profile. Formica Laminate Flooring recommends Unika Multifloor Trim, as suitable, for the installation of Formica Laminate Flooring.

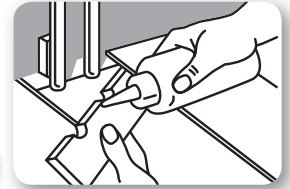
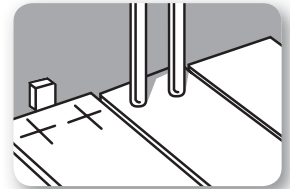
Special cases: Fitting around pipes and columns (*refer diagram 10*).

When installing around pipes and columns, mark the centre of the pipe/column on the plank. Do this by placing the plank in front of, and then alongside the pipe/column. This should give an accurate centre point to drill holes.

Drill holes 10mm larger than the pipes/columns (to allow for the expansion gap), onto the plank where the points have been marked. Next, cut the plank across through the centre of the holes that have been drilled.

Fit the largest piece of the planks first, then apply Formica Lock Seal (as per the instructions on the tube), to the sawn off smaller piece. Be careful not to glue the sawn off piece to the sub-floor, pipes/columns or wall.

Then fill in the gap with Unika ColorSealant that's colour matched to the floor.

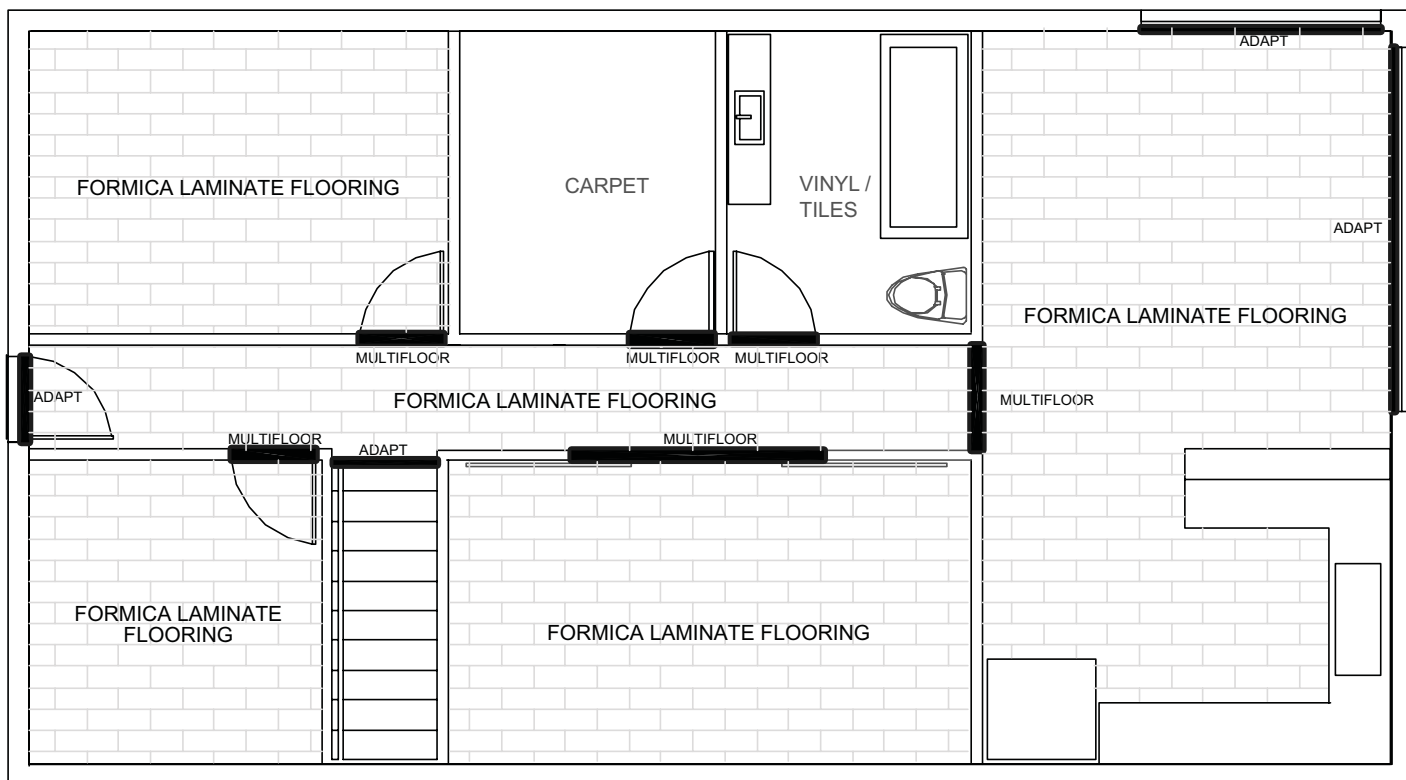


10

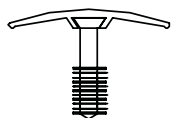
Step 11: Finishing off the laid floor: When laying of the floor is complete remove all the installation spacers and affix the quad beading onto the skirting board (on top of the laminate floor), to cover the perimeter expansion gap. Use long thin nails approx 30mm to affix the quad beading onto the skirting board or liquid nail adhesive for cement walls. **Note:** for quad beading placed around corners, cut at a 45° degree angle at both joining ends for a neat fit.

Finally, inspect the floor and if there are any small chips on the plank surface they will need to be filled using Unika Colorfill Repairer (as per the instructions on the pack), to colour match the floor.

Trim guide

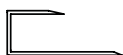


Profiles



Multifloor T1

T profile transition between level and lower floors.



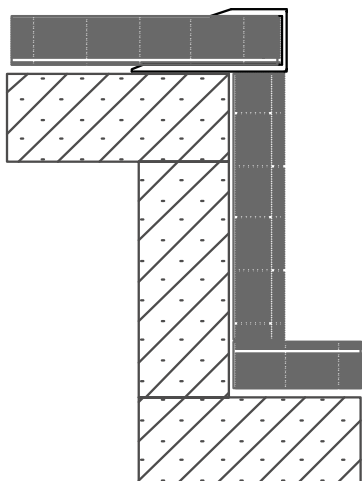
Adapt T5

End profile transition to walls and higher floors.



Tilers Mate - L angle

End and level profile transition.



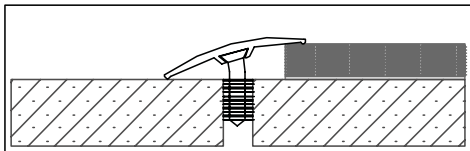
Transition examples

Adapt T5

End profile transition for stairs.

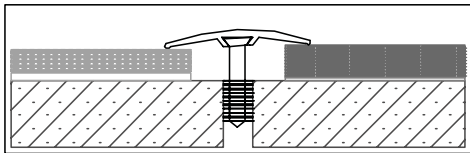
Formica Laminate Flooring must be glued to sub-floor.

End profile transitions



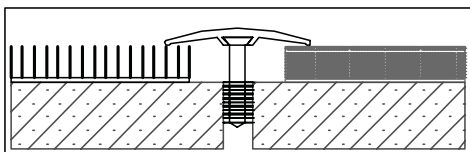
Multifloor T1

Transition from Formica Laminate Flooring to a lower hard floor surface, such as tiles, wood or vinyl.



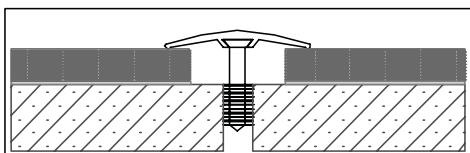
Multifloor T1

Transition from Formica Laminate Flooring to a raised floor surface, such as ceramic tiles.



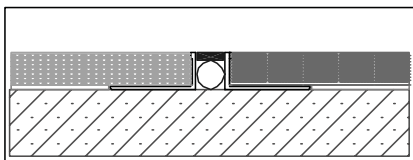
Multifloor T1

Transition from Formica Laminate Flooring to carpet.



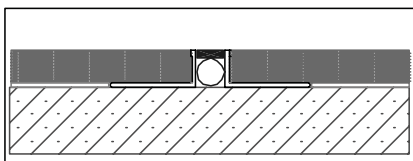
Multifloor T1

Transition from Formica Laminate Flooring to Formica Laminate Flooring for doorways and expansion joints.



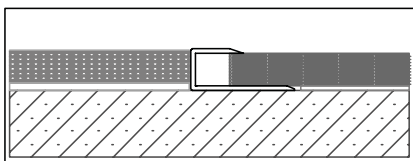
Tiler mate - L angle

Transition from Formica Laminate Flooring to a level hard floor surface, (+/-2mm) such as tiles, wood or vinyl. Keep minimum gap, fill gap with Unika ColorSealant.



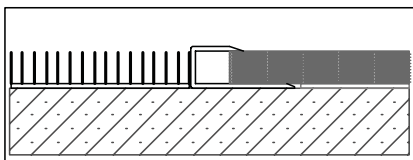
Tiler mate - L angle

Transition from Formica Laminate Flooring to Formica Laminate Flooring. Keep minimum 10mm gap, fill gap with sealant used at expansion joints and doorways.



Adapt T5

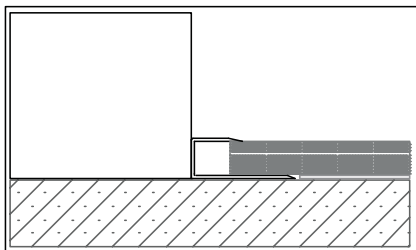
End profile transition from Formica Laminate Flooring to a level hard floor surface, (+/-2mm) such as tiles, wood or vinyl.



Adapt T5

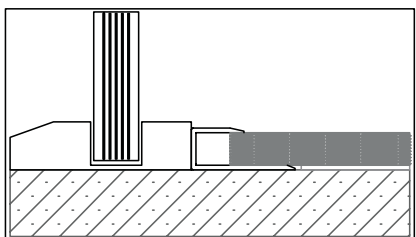
End profile transition from Formica Laminate Flooring to carpet.

End profile transitions



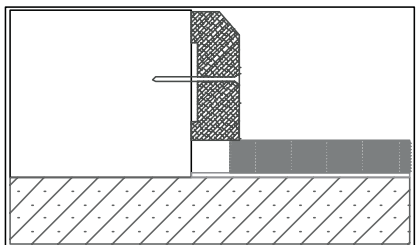
Adapt T5

End profile transition from Formica Laminate Flooring to other higher and vertical surfaces, such as walls, fireplace hearths.



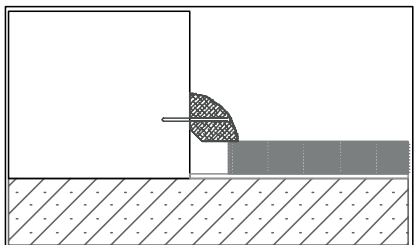
Adapt T5

End profile transition from Formica Laminate Flooring to other higher and vertical surfaces, such as walls, fireplace hearths.



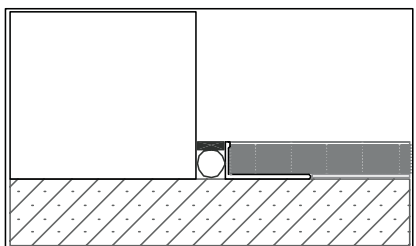
Skirting 12mm +

Use to cover expansion gaps around room perimeter.



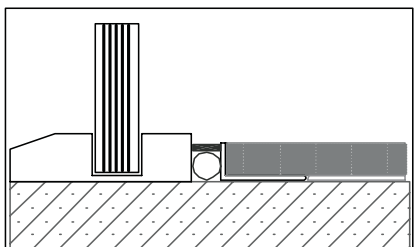
Quarter Round 20mm +

Use to cover expansion gaps around room perimeter.



Tiler mate - L angle

Use for expansion gaps where skirting not applicable. Keep minimum 10mm gap, fill gap with sealant. Use at expansion joints and doorways.



Tiler mate - L angle

Use for expansion gaps at sliding doors, glazing beads. Keep minimum 10mm gap, fill gap with sealant. Use at expansion joints and doorways.

Recommended accessories

Formica Flooring Underlay is a 2.5mm high-density polyethylene, low compression foam that is laminated to a heavy duty insulating foil. Formica Flooring Underlay has a self adhesive joining flap for easy installation, provides an excellent moisture barrier and insulation barrier for added energy efficiency.

Unika ColorSealant is a flexible acrylic latex sealant used for laminate flooring expansion joints. ColorSealant is colour matched to flooring and provides a water-resistant flexible seal around floor perimeter and cut out areas.

Unika ColorFill Repairer is a hardwearing compound developed to repair chips and scratches that may accidentally occur when installing laminate or timber flooring. Colorfill is colour matched to flooring for almost invisible repairs and may be used to fill open joints that may appear between planks.

Unika Lockseal Adhesive Sealant adds additional water resistance to floor joints in areas where accidental water spillage may occur. Its adhesive properties also allow added strength to the end lock of the plank or when the tongue is removed to allow fitting in confined areas.

Unika Deep Cleaner is a strong activating cleaner that will remove wax residue, floor polish, difficult stains, pen markings and scuffmarks without harming the flooring surface.

Unika Zip Clean is a high quality cleaning product developed for regular use to maintain laminate flooring.

Important product information

- Do not install Formica Laminate Flooring in bathrooms, laundries and toilets due to potential flooding. It is also not recommended for installation on sub-floors with under floor heating.
- Take care when transporting the boxes to avoid possible damage. Damaged boxes may void the product warranty. Place unopened boxes inside the building where the floor is to be laid. Do not leave outside.
- Before commencing the installation open one box only and carefully read the laying instructions.
- Always use the correct accessories when laying Formica Laminate Flooring to ensure the product warranty does not become void.
- Formica Laminate Flooring is manufactured from approx 90% natural wood fibre, and like all wood based products, it will expand and contract with changes in room temperature and humidity. Therefore uneven joints and gaps between planks of 0.1mm and 0.2mm are within normal product tolerances.
- Formica Laminate Flooring meets Australian Standards for UV resistance, however flooring may fade according to the degree of exposure to UV sunlight and ageing of the floor. This is within normal product tolerances.
- For dark colour planks, white lines may appear between joints after flooring has been installed and may be removed with Unika Zip Clean or Deep Cleaner. This is within normal product tolerances and will fade away as floor is being used.

Cleaning the floor

- Always clean Formica Laminate Flooring with a vacuum cleaner or fibre mop.
- If the floor is very dirty or has stains, vacuum first to remove dust and loose dirt. Then use Unika Deep Cleaner as per the instructions on the bottle (available from major Flooring Retail outlets).
- Do not wash the floor with wet cloths or mops. This only spreads the dirt, and can cause swelling of the joints.
- Do not clean Formica Laminate Flooring with wax, polish, floor cleaner, detergent or scouring materials.
- Steam mops must not be used on Formica Laminate Flooring. It can cause irreversible damage and will void the product's warranty.
- Persistent stains can be removed with acetone applied onto a dry clean cloth and wiped over the stain.

Care & maintenance

- Wipe up accidental spills immediately, with a clean dry cloth. Liquid spills left on Formica Laminate Flooring will cause swelling of the joints.
- Fit all movable furniture, like tables and chairs with felt pads.
- Place a doormat outside all external doors, as sand, dirt and grit act like abrasive paper and will damage the Formica Laminate Flooring surface layer.
- Place a plastic mat or rug under rolling chairs.
- Lay dirt-absorbing mats down in areas of high dirt incidence (such as entrance halls or hallways).
- Do not wax or varnish Formica Laminate Flooring as it has been designed and manufactured with a high strength coated surface layer, and applying wax or varnish will damage this layer.
- Should accidental scratches occur on the surface layer of the plank, this can be fixed by applying Unika ColorFill Repairer (available from major Flooring Retail outlets).

Flooring options

Whether it's a small room on a budget or a large scale heavy duty commercial application, Formica Laminate Flooring has the range and styles to suit.

	COMMERCIAL COLLECTION			RESIDENTIAL USE ONLY	
LAMINATE FLOOR THICKNESS	12mm Standard Plank (includes silent underlay)	10mm Narrow Plank	8mm Standard Plank	7mm Standard Plank	6mm Standard Plank
Product suitability	<ul style="list-style-type: none"> Suitable for large residential & general commercial floor areas Restaurants, hotel rooms, retail & public spaces Heavy residential & general commercial traffic 	<ul style="list-style-type: none"> Suitable for large residential & general commercial floor areas High use residential & general commercial traffic 	<ul style="list-style-type: none"> Suitable for large residential & general commercial floor areas High use residential & general commercial traffic 	<ul style="list-style-type: none"> Suitable for medium residential floor areas General residential traffic 	<ul style="list-style-type: none"> Suitable for small residential floor areas only (excluding hallways, family rooms & kitchens) Light residential traffic
Product features	<ul style="list-style-type: none"> High strength locking profile Premium grade quality & appearance Silent underlay attached to plank for superior sound insulation Stronger protective wear layer on surface 	<ul style="list-style-type: none"> High strength locking profile Thicker substrate for reduced foot noise Durable surface overlay for high traffic areas Australian woodgrain décors Authentic traditional plank design 	<ul style="list-style-type: none"> High strength locking profile Thicker substrate for reduced foot noise Durable surface overlay for high traffic areas 	<ul style="list-style-type: none"> Good general flooring product Ideal for small to medium size residential floor areas 	<ul style="list-style-type: none"> Ideal for cost effective room makeover
Residential Limited Warranty*	20 years	15 years	15 years	10 years	7 years
Commercial Limited Warranty*	7 years	7 years	7 years	–	–

Note: Formica Laminate Flooring is not recommended for use in bathrooms, laundries and toilets. It is also not recommended for installation on sub-floors with underfloor heating.

*Please obtain a copy of the Formica Laminate Flooring Limited Warranty from The Laminex Group or from an approved supplier.

Technical information

LAMINATE FLOOR THICKNESS	12mm	10mm	8mm	7mm	6mm
Product Class	32	32	32	31	23
Commercial Limited Warranty	7 years	7 years	7 years	–	–
Residential Limited Warranty	20 years	15 years	15 years	10 years	7 years
Size per plank	1380x193x12mm	1380x116x10mm	1380x193x8mm	1380x193x7mm	1380x193x6mm
Planks per pack	5	8	7	8	10
m ² per pack	1.331m ²	1.281m ²	1.864m ²	2.130m ²	2.663m ²
Weight per pack (approx)	15kg	10kg	15kg	15kg	15kg
Substrate	Aquastop 6 HDF	Aquastop 6 HDF	Aquastop 6 HDF	Standard HDF	Standard HDF
Silent Underlay	Yes	–	–	–	–
Formaldehyde Emission	E1	E1	E1	E1	E1
Swelling (EN 317)	<6%	<6%	<6%	<12%	<12%
Impact Resistance (EN 685)	IC2	IC2	IC2	IC1	IC1
Abrasion Resistance (EN 685)	AC4	AC4	AC4	AC3	AC3
Slip Resistance (AS/NZS 4586)	R9	R9	R9	–	–
Fire Resistance ISO 9239					
• Average Critical Radiant Flux	7.1kW/m ²	7.1kW/m ²	7.1kW/m ²	–	–
• Mean Distance of Flame Travel	343.3mm	343.3mm	343.3mm	–	–
• Average Smoke Observation	6%	6%	6%	–	–

Limited Warranty information

FORMICA® LAMINATE FLOORING RESIDENTIAL LIMITED WARRANTY

Floor Thickness	Limited Warranty Period
6mm	7 years
7mm	10 years
8mm	15 years
10mm	15 years
12mm	20 years

Terms and Conditions: 1.The Laminex Group as the distributor of Formica Laminate Flooring, guarantees to the first purchaser that the product is free from manufacturing defects notified in writing to The Laminex Group within 15 Years from the date of original supply. 2.The Laminex Group's liability to the first purchaser for defects is limited to those defects caused directly by the manufacturing process for Formica Laminate Flooring. 3.This warranty given by The Laminex Group is in addition to, and in no way limits, any warranty enjoyed by the first purchaser pursuant to the Australian Trade Practices Act 1974 or relevant State Fair Trading legislation, New Zealand Fair Trading Act and the New Zealand Consumer Guarantees Act. 4.This warranty guarantees the product against splitting, delamination, twisting, structural deformation and wearing through of the wear and stain resistant coating in a residential environment for the nominated period. It is conditional upon the product being used in normal wear residential situations only and installed, maintained and protected from damage strictly in accordance with the manufacturer's guidelines as supplied with the product (see reverse side of this label). 5.This warranty is restricted to the replacement of the defective product only and does not extend to cover claims for any consequential loss, damage or expense incurred (including but not restricted to labour and other costs in replacing the product, inconvenience and physical injury). In the event of a colour no longer being available in the range, a selection from the current range will be offered in its place.

FORMICA® LAMINATE FLOORING COMMERCIAL LIMITED WARRANTY

Floor Thickness	Limited Warranty Period
8mm	7 years
10mm	7 years
12mm	7 years

Terms and Conditions: 1.The Laminex Group as the distributor of Formica Laminate Flooring, guarantees to the first purchaser that the product is free from manufacturing defects notified in writing to The Laminex Group within 7 Years from the date of original supply. 2.The Laminex Group's liability to the first purchaser for defects is limited to those defects caused directly by the manufacturing process for Formica Laminate Flooring. 3.This warranty given by The Laminex Group is in addition to, and in no way limits, any warranty enjoyed by the first purchaser pursuant to the Australian Trade Practices Act 1974 or relevant State Fair Trading legislation, New Zealand Fair Trading Act and the New Zealand Consumer Guarantees Act. 4.This warranty guarantees the product against splitting, delamination, twisting, structural deformation and wearing through of the wear and stain resistant coating in a general commercial environment for a period of 7 Years. It is conditional upon the product being used in normal wear general commercial situations only and installed, maintained and protected from damage strictly in accordance with the manufacturer's guidelines as supplied with the product (see reverse side of this label). 5.This warranty is restricted to the replacement of the defective product only and does not extend to cover claims for any consequential loss, damage or expense incurred (including but not restricted to labour and other costs in replacing the product, inconvenience and physical injury). In the event of a colour no longer being available in the range, a selection from the current range will be offered in its place.

The following exclusions are applicable to both residential and commercial limited warranties: 1.Movement in the flooring resultant from incorrect installation methods. 2.Expansion caused as a direct result of the following: (a) Moisture rising from the sub-floor and being absorbed into the product. (b) Moisture being absorbed into the product as a direct result of water/ liquid spillage or excess water being used to clean the product. 3.Damage caused as a direct result of the following: (a) Vehicular traffic (b) Abnormal use (c) Abusive use (d) Poor maintenance (e) The floor being exposed to excessive sand, grit or gravel. 4.Where the product has been used in high humidity areas (wet areas, etc). 5.Outdoor applications. 6.Defective planks used in the installation. Upon making a warranty claim you will need to provide proof of purchase along with an original Formica Laminate Flooring product label. Upon approval of a claim, The Laminex Group will supply replacement product in the closest décors available in the range at the time of the claim.



FORMICA LAMINATE FLOORING



For more information call **132 136** or visit **www.formica.com.au**. For the location of your closest retailer phone **1800 002 204**.

Formica Laminate Flooring is marketed and distributed by The Laminex Group. A division of Laminex Group Pty Limited ABN 98 004 093 092. Made in Europe to The Laminex Group specifications. The colours of the photographs depicted in the brochure are as close to the Formica Laminate Flooring range as photographic lighting and modern printing processes allow. The Laminex Group recommends the use of laminate flooring cleaning products, please visit www.formica.com.au for specific care and cleaning information. Formica Laminate Flooring is no different than any other material in that darker colours will always show scratches and superficial wear and tear more readily than lighter colours. Formica Laminate Flooring should be protected from strong direct sunlight as continuous exposure may cause discolouration or fading to the surface over time. Please obtain a copy of the terms and conditions of the Formica Laminate Flooring limited warranty from The Laminex Group or visit www.formica.com.au. This Warranty is in addition to any rights that may exist under the Trade Practices Act.

Formica®