

EPSON®

EXCEED YOUR VISION



All-in-One

Print | Copy | Scan | Photo | Fax

Epson Stylus™ Photo TX800FW

Heavyweight Performer, A new Statement in Design

- Wireless Network Connectivity
 - Integrated Ethernet/wireless connectivity for shared printing
- Epson Claria™ Photographic Ink
 - High definition photo prints
 - No wastage with individual ink cartridges
- Large 7.8" Touch Panel
 - Easy and seamless access to all functions
- 30-sheet Auto Document Feeder
 - For effortless scanning, copying and faxing

All-in-One

Print | Copy | Scan | Photo | Fax

Epson Stylus™ Photo TX800FW

Designed for your dynamic lifestyle with wireless connectivity & high quality document and photo printing

The Epson Stylus™ Photo TX800FW, synchronises style, performance and versatility to bring you the perfect printing experience.

A New Statement in Design

The Epson Stylus™ Photo TX800FW is wrapped in an Italian designed piano black body exuding style and substance. Intuitively designed, the paper feeder, memory card slots, control panel and ink cartridges are located in front for easy access.

Touch Panel for Simplicity of Use

With a large 7.8" touch panel, operation is a breeze with all functions at your fingertips. In addition, it is tilt adjustable and comes with high definition LCD backlighting for easy viewing under all light conditions.



Carefree Wireless Connectivity

Wireless LAN enables printer sharing among multiple users at home and in the office. An array of functions, including scanning, faxing, copying and printing, can be used on a wireless network, saving space and enhancing productivity.



Auto Document Feeder

The Epson Stylus™ Photo TX800FW is equipped with an Auto Document Feeder, bringing you efficient multiple-page copying, scanning and faxing of up to 30 sheets.

Superb Print Speed

Built with Epson's Micro Piezo print head technology, the Epson Stylus™ Photo TX800FW prints at an amazing print speed of up to 40 pages per minute.



Dual Paper Trays, Optional Duplex Printing

Built-in dual paper trays enable greater paper storage. In addition, the Epson Stylus™ Photo TX800FW is capable of duplex printing which will greatly reduce paper wastage.



Professional Quality

Epson's Micro Piezo print head technology and Variable Sized Droplet Technology combine to ensure fast print speeds, smooth colour gradation and precision printing every time. With ink droplets from 1.5pl and high resolution printing at up to 5760 dpi, rest assured even intricate details will be accurately reproduced in every print.



Long Lasting Brilliance

Epson's 6 colour Claria™ high-definition photographic ink produces an ultimate combination of professional photo quality and longevity, to 200 years.

Printed on Epson's range of photo papers, it delivers ultra high definition, colour reproduction and glossiness, with a durability superior to that of lab photos.

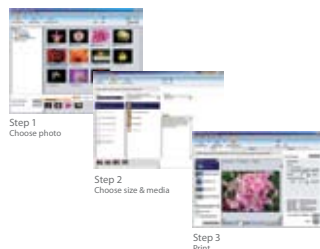


In addition, Epson Claria™ Photographic ink is available in individual ink cartridges ensuring no wastage, as you only need to replace the colour you use.

Photo Perfection with Epson Creativity Suite

The Epson Stylus™ Photo TX800FW comes with powerful and easy-to-use photo editing software including:

- Epson Easy Photo Print
Achieve photo lab quality prints in just 3 steps with this easy-to-use software.



- Epson PhotoEnhance
Epson PhotoEnhance automatically adjusts colour balance to best correct poor quality photos. Its Portrait Enhance capabilities, auto detects faces and enhances face definition and skin radiance.



Partners in Perfection



An indispensable back-up and viewing solution for all professional photographers on-the-move. Review and share your photo shoots with absolute clarity on location with Epson Multimedia Storage Viewer™.



Epson inks are designed specifically to work with your Epson printer to deliver stable, long-lasting prints.



Epson specialty paper media is designed to complement Epson genuine inks to produce exceptionally high quality prints.

Epson Stylus™ Photo TX800FW

Weight: 10.7KG



*To use USB port, your PC must conform to PC98 specifications, and have Windows preinstalled. Consult the documentation provided with your PC for further information about USB connectivity. Note also that printing errors may occur if non-standard cables or more than 2 USB hub connections are used.



*Print speed (PPM) when printed on A4 plain paper in the fastest mode, 10x15cm photo print speed when printed on Epson Premium Glossy Photo Paper in default mode. Print speed may vary depending on system configuration, print mode, document complexity, software, type of paper used and connectivity. Print speed should not include processing time on host computer.

**Copy speed (CPM) when printed on plain paper in the fastest mode. Copy speed may vary depending on copy mode, document complexity, type of paper used and number of copies.



Black text

Black text
and graphicsPhoto 4R
(4"x6")

Epson is the registered trademark of Seiko Epson Corporation. All other product names and other company names used herein are for identification purpose only and may be the trademarks or registered trademarks of their respective owners. Epson disclaims any and all rights in those marks. Scan/Print samples shown herewith are simulations. Specifications are subject to change without notice.

SPECIFICATIONS

PRINTER TYPE PRINTING METHOD NOZZLE CONFIGURATION PRINT DIRECTION PRINT QUALITY MAXIMUM RESOLUTION MINIMUM INK DROPLET VOLUME PRINT SPEED BLACK TEXT MEMO (A4) COLOR TEXT MEMO (A4) <small>when printed on Epson Premium Glossy Photo Paper</small>	On-demand ink jet (piezoelectric) 180 nozzles Black, 180 nozzles, each colour (Cyan, Magenta, Yellow/Light Cyan/Light Magenta) Bi-directional printing, Uni-directional printing 5760x1440 dpi (with Variable-Sized Droplet Technology) 1.5pl Approx 40cpm (Draft) Approx 40cpm (Draft) Approx 10 sec per photo (Draft Borderless)
8 INK INK CARTRIDGES (HIGH CAPACITY) BLACK INK CARTRIDGE CYAN INK CARTRIDGE MAGENTA INK CARTRIDGE YELLOW INK CARTRIDGE LIGHT CYAN INK CARTRIDGE LIGHT MAGENTA INK CARTRIDGE 82N INK CARTRIDGES (STANDARD CAPACITY) BLACK INK CARTRIDGE T0821 CYAN INK CARTRIDGE T0822 MAGENTA INK CARTRIDGE T0823 YELLOW INK CARTRIDGE T0824 LIGHT CYAN INK CARTRIDGE T0825 LIGHT MAGENTA INK CARTRIDGE T0826	Approx 570 pages ^A Approx 855 (Composite Yield) ^A Approx 355 pages ^A Approx 525 (Composite Yield) ^A ^A Based on ISO/IEC 24711 & 24712 Test Suite
CONTROL PANEL LCD SCREEN RESOLUTION COPY SPEED** BLACK TEXT MEMO (A4) COLOR TEXT MEMO (A4) REDUCTION/ENLARGEMENT COPY MODES SCAN TECHNOLOGY SCANNER TYPE SENSOR TYPE OPTICAL RESOLUTION BIT DEPTH SCANNING SPEED MONOCHROME COLOR MONOCHROME COLOR MONOCHROME COLOR	3.5 inch TFT Color LCD + 7.8inch touch panel (Actual sensing area size: 189.7mmx58.6mm) 320pixel x 240pixel Approx 40 cpm (Draft) Approx 39 cpm (Draft) Auto Fit Function Standard copy mode / Borderfree A4 Flatbed colour image scanner CS 4800x4800 DPI Input 48bits(16bits/colour) /Output 24bits(8bits/colour) A4 300dpi 2.2 msec/line A4 300dpi 7.5 msec/line A4 600dpi 7.0 msec/line A4 600dpi 13.1 msec/line A4 1200dpi 8.8 msec/line A4 1200dpi 25.4 msec/line
FAX FUNCTION FAX SPEED FAX RESOLUTION ERROR CORRECTION MODE FAX SPEED DIALS (MAX) PAGE MEMORY FAX TRANSMISSION SPEED CARD SLOT FUNCTION BUILT-IN SLOT SUPPORTED MEMORY CARDS	Up to 33 kbps Standard (200x100), Fine (200x200) with error diffusion CCITT/ITU Group3 fax with Error Correction Mode 60 Names & Numbers Page memory Up to 180 pages (ITU-T No.1 chart) Approx. 3sec/page CF Type-II, Memory Stick, SD/MMC, xD-Picture card Compact Flash (Memory card only), MicroDrive, Memory Stick, Memory Stick Duo (With Adapter), MagicGate Memory Stick, MagicGate Memory Stick Duo (With Adapter), Memory Stick PRO, Memory Stick PRO Duo (With Adapter), SD, SDHC, MiniSD (With Adapter), MiniSDHC (With Adapter), MicroSD (With Adapter), MicroSDHC (With Adapter), Multi Media Card, MMCplus, MMCmobile (With Adapter), MMCmicro (With Adapter), xD-Picture card, xD-Picture card Type-M, xD-Picture card Type-H JPEG (Exif ver 2.2) - DCF version 1.0/2.0, DPOF compliant
FILE FORMAT AUTO DOCUMENT FEEDER FUNCTION MAXIMUM NUMBER OF ORIGINAL	30pages (Xerox® 64g/m2) or 3 mm (Letter, A4 / 10 sheets (Legal))
INTERFACE USB WIRELESS ETHERNET PAPER HANDLING PAPER FEED METHOD PAPER HOLD CAPACITY PAPER SIZE PRINT MARGIN INPUT DATA BUFFER COLOR MATCHING NOISE LEVEL ELECTRICAL SPECIFICATIONS RATED VOLTAGE RATED FREQUENCY POWER CONSUMPTION	USB - Compatible with the USB 2.0 Specification ¹ (cable included) WiFi802.11a/g 10 Base-T, 100 Base-TX Friction feed Input capacity: 120 sheets, A4 Plain paper (84g/m²) A4, A5, A6, B5, 10x15cm (4x6in), 10x20cm (4x5in), 16x25cm (6x10in), 10x148mm, Envelopes: #10/4 1/4x9 1/2in, DL110x220mm, C61148x162mm 0mm top, left, right, bottom via custom settings in printer driver. Otherwise 3mm top, left, right, bottom. 64KB ICM Profiles (Windows), AdobeRGB (Windows and Mac), ColorSync2.0, CompatibleMac 4.8B (A) Measurement according to ISO7779 Pattern with PCPP Photo RPM mode AC 100 - 120V / AC 220 - 240V * Rated Voltage will vary depending on area 50-60Hz Approx. 26W (Standalone copying, ISO150161 Letter Pattern) AC 100-120V : Approx 5.5W (Sleep Mode), AC220-240V : Approx 5.5W (Sleep Mode) AC100-120V : Approx 0.3W (Power off Mode), AC220-240V : Approx 0.5W (Power off Mode) ENERGY STAR rating
PRINTER SOFTWARE ON CD-ROM PRINTER DRIVERS ON-LINE GUIDE	Windows 2000/XP/XP x64 Edition/Vista Mac OS 10.3.9 or later with USB Yes

EPSON®

EXCEED YOUR VISION