

Epson EMP-83

**Epson
EMP 83**

Ideal for your classroom or boardroom - fast, efficient and reliable

The new Epson EMP-83 desktop projector provides improved brightness, superb image quality, and multi-media capability at an affordable price. Easy to set up, use and turn off, it will bring your classroom or boardroom to life.

Compact, sleek and stylish

Sleek, stylish and lightweight (2.9kg), the Epson EMP-83 is both versatile and portable. Utilising the latest 3LCD technology, you'll enjoy brighter images with the 2200 ANSI lumens, more natural colour reproduction and crisp, smooth video playback. Your audience will also remain focused on your presentation thanks to its quiet operation at just 28 dB*.

Mobile or fixed solutions

Easily moved from room to room, or used by people constantly on the move, the Epson EMP-83 can also be permanently fixed to ceilings in classrooms, training rooms and meeting rooms with the optional ceiling mount kit.

Easy remote management

When the EMP-83 is connected to a network, Epson EMP Monitor allows you to remotely monitor the status, turn the projector on or off and even switch sources. Email alerts can be sent to warn of any potential problems and timers.

Quick, simple and secure to use

If increased time constraints in education and business seem to add to your daily pressures, you'll be delighted that these projectors take only 5 seconds before information begins to be displayed. They also benefit from the Instant Off feature so there's no waiting around after finishing your lesson or presentation.

Automatic Vertical Keystone correction (to $\pm 30^\circ$), and an intuitive control panel means you're quickly up and running, even in the smallest of rooms. Enhanced security with security bar, password access and optional remote control setting, ensures you're always in control.

Multi-media and audio capability

The Epson EMP-83 accepts input data from 2 PCs, allowing you to conveniently switch between them. The built-in 7W speaker offers excellent audio support, and optional cables are available to connect to a range of other sources, such as DVD players and digital cameras.

E-TORL technology

Our patented E-TORL lamp ensures clear visibility, even in light rooms giving increased brightness for lower power consumption than standard lamps. Smaller, brighter, more energy efficient, the E-TORL is tomorrow's lamp, today.

Versatile, affordable, compact - ideal for classrooms, seminars and training rooms

- Bright images with 2200 ANSI lumens from an energy efficient, Epson exclusive E-TORL lamp
- Exceptional image quality through Epson's 3LCD technology
- Instant Off keeps you in control with no delays
- Enhanced security with password protection and security bar
- Monitor and control through direct network connection
- Internal 7W speakers for added audio capabilities

*in low brightness mode



**3LCD
E-TORL**



Ordering Information

Description	EMP-83 LCD Projector
Part Number	V11H255040DA
Barcode	
Carton Dimensions	427x379x182mm
Carton Weight	net= 2.9kg; gross=5.0kg

* The last two letters may vary depending on the version. See the RRP list or Trade Price lists for correct part codes.

Screen Size & Projection Distance

Use the Epson Projection Distance Calculator software available from www.epson.co.uk for distances and screen sizes not shown below.

Screen size	Wide			Tele		
	cm	inch	foot	cm	inch	foot
30	84	33	2.7	101	40	3.3
40	113	44	3.7	136	53	4.5
50	142	56	4.6	171	67	5.6
60	171	67	5.6	206	81	6.7
80	229	90	7.5	275	108	9.0
100	287	113	9.4	345	136	11.3
120	345	136	11.3	415	163	13.6
150	432	170	14.2	519	204	17.0
200	577	227	18.9	693	273	22.7
250	722	284	23.7	867	341	28.5
300	867	341	28.4	1041	410	34.2

Accessories

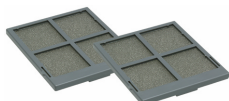
(model code) **order code**

Consumables

Spare Lamp (ELPLP42)
V13H010L42



Air Filter Set (ELPAF13)
V13H134A13



Screens

50" Portable Screen (ELPSC06)
V12H002S06



60" Portable Screen (ELPSC07)
V12H002S07



80" Portable Screen (ELPSC08)
V12H002S08

Mountings

Ceiling Plate (ELPFC03)
Required if using a ceiling pipe.
V12H003C03



Ceiling Pipe (silver) 370mm
(ELPFP04)
V12H003P04

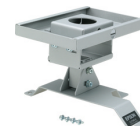
Ceiling Pipe (silver) 570mm
(ELPFP05)
V12H003P05

Ceiling Pipe (silver) 770mm
(ELPFP06)
V12H003P06



Ceiling Mount (ELPMB18)
Connects to the projector and either directly to the ceiling, or to a ceiling pipe.

V12H003B18



Cables

VGA Computer Cable HD-15 to HD-15 1.8m (ELPKC02)

V12H005C02



VGA Computer Cable HD-15 to HD-15 3.0m (ELPKC09)

V12H005C09

VGA Computer Cable HD-15 to HD-15 20m (ELPKC10)

V12H005C10

Component Video Cable
(ELPKC19)

V12H005C19



HD-TV Cable
(ELPKC22)
V12H005C22



What's in the Box

Projector
with Slide Lens Shutter



Remote Control



2 x AAA alkali batteries
for the remote control



Power Cable
3.0m cable



Computer Cable
Mini D-Sub 15-pin/mini D-Sub 15-pin, 1.8 m (6 ft.)
Use when projecting images from a computer



Read This First Booklet

Explains the contents of the box and which manuals the user should refer to.

Setup Guide

Contains information on basic operations for preparing the projector before use (setup and connecting video equipment or a computer) and for starting projection.

Document CD-ROM

Contains information on common and useful functions, configuration, troubleshooting, and maintenance.

Safety Instructions

/ World Wide Warranty Terms

Specifications

Epson EMP-83

Model

Epson EMP-83

Projection System

3LCD RGB Liquid-Crystal Shutter Projection System

Projection Method

Front / Rear / Ceiling Mount

Specification of main parts

LCD

Size: 0.55 inches with MLA
Driving Method: Poly-silicon TFT Active Matrix
Pixel Number: 786.432 dots (1024x768) x3
Native Resolution: XGA
Aspect Ratio: 4:3
Pixel Arrangement: Cross Stripe
Refresh Rate: 50Hz-60Hz

Projection Lens

Type: Manual zoom and focus
F-Number: 1.6-1.74
Focal Length: 18.4 mm – 22.12 mm
Zoom Ratio: Optical Zoom (1-1.2)
Lens Cover: Slide Lens Shutter

Lamp

Type: 170 W UHE
Life: 3000h (High Brightness), 4000h (Low Brightness)

Optical System

Dichroic Mirror Separation & Prism combine Method

Screen Size (Projected Distance)

30" to 300" [1.01m to 10.42m]

30" to 300" [0.84m to 8.66m]

60" screen [1.7m to 2.1m]

Offset

8.6:1

Brightness

High Brightness Mode

2200 Lumens (Colour mode: Game, Zoom: Wide)

Low Brightness Mode

1760 Lumens (Colour mode: Game, Zoom: Wide)

Contrast

400:1 (Colour mode: Game, High Brightness mode)

Brightness Uniformity

0.90

Colour Reproduction

Full-Colour (16.77 million Colours)

Sound Output

7W Monaural

Speaker

7.1 cm x 4.1 cm x 1

Function

User Logo, A/V Mute, Freeze, E-Zoom, Help

Remote Control Infrared Receiver Directivity

Right/ Left: -30 to +30 degrees
Upper/ Lower: -15 to +15 degrees
Front/ Rear: 6m

Effective Scanning Frequency Range

Pixel clock
13.5MHz to 162MHz
Horizontal
15KHz to 92KHz
Vertical
50Hz to 85Hz

Adjustment Functions

Projector / Remote Control
Brightness / Contrast / Tint / Saturation / Sharpness / Input signal etc.
Foot adjuster: front-Centre
Tilt Angle
0 to 11 degrees
Keystone Correction
Vertical: PC -30 to +30 degrees
Video -20 to +20 degrees: component video image with ratio of 16:9 (zoom: Tele)
Colour Mode
PC: Photo, Presentation, Theatre, Game, sRGB, Blackboard, Text
Video: Sports, Presentation, Theatre, Game, sRGB, Blackboard, Text

Analogue RGB I/O

Display Performance
Native : 1024 x 768 dots
Input Signal
Signal Type: Separate signal

Video Signal: Analogue (0.7V p-p, 75 ohm / Mac0.714Vp-p, 75ohm)

Sync. Signal: Separate(positive&negative, bi-polarity 2-5Vpp) /

Composite(positive&negative, bi-polarity 2-5Vpp) /

Sync-on-green(negative, 0.3Vpp)

Audio Signal: 500mVrms / 47Kohm

Input Terminal

Video: Mini D-sub 15pin x2 Blue moulding

Audio: stereo mini-jack x2

Output Terminal

Video: Mini D-sub 15pin x1 Black moulding

Audio: Stereo mini-jack

Video I/O

Display Performance

NTSC: 560 line PAL: 560 line (Depends on observation of the multi-burst pattern)

Input Signal

Video Standard: NTSC / NTSC4.43 / PAL / M-PAL / N-PAL / PAL60 / SECAM

Video Signal: Composite Video(1.0Vpp/ Sync.negative, 75 ohm) /

S-Video(Luminous0.714Vpp, Chrominous 0.286Vpp, 75 ohm) /

Component Video(Analogue Y level 0.7V 75 ohm/ Cr Cb level +/-0.35V 75 ohm/ sync.negative 0.3V or 3-state+/-0.3V on Y) /

Video-RGB(0.7V p-p, 75 ohm/ Mac 0.714Vpp, 75 ohm)

Audio Signal: 500mVrms / 47Kohm

Input Terminal

Video: Composite Video: RCA (Yellow) x 1

S-Video: Mini DIN

Component Video: Mini D-sub 15pin Blue moulding (in common with Analogue RGB connector)

Video RGB: Mini D-sub 15pin Blue moulding (in common with Analogue RGB connector)

Audio: RCA x 1 (White/Red) (in common with Analogue RGB Audio terminal)

Control I/O

I/O Signal

RS-232C

Network Interface

LAN (RJ45)x1

Operating Temperature

5°C to 35 °C <41°F to 95 °F> (20% - 80% Humidity)

Thermal shutdown: > 45°C

Operating Altitude

From 0 feet/ 0 m to 7,500 feet/ 2,286 m (over 4,921feet/ 1,500 m area: with High Altitude)

Start-up Period

5sec (warm-up period: 30sec)

Direct Power On/ Off

Cool-down Period

Instant Off

Power Supply Voltage

100-240 VAC ±10% , 50/60Hz

Power Consumption

220-240V area (Europe etc.)

Lamp ON: 231W, Standby: 5.8W

Rated Voltage & Current

100 - 240 VAC 2.9 – 1.2A 50/60Hz

Dimensions

Excluding Feet

245(D) x 327(W) x 92(H) mm

Maximum

245(D) x 327(W) x 108(H) mm

Weight

Approx. 2.9kg

Fan Noise

High Brightness Mode

35dB

Low Brightness Mode

28dB

Accessories

Remote Control

Batteries (AAA Alkali battery x 2 for the remote control)

Power Cable 3.0m

Computer Cable 1.8m, Slim-cable with blue Colour jacks, Mini D-sub 15pin (Male) - Mini D-sub 15pin(Male)

Password Protect Sticker

User's Manual (Multilingual CD) - User Guides in PDF format

Warranty

UK: 3 year on-site, next business day, repair or replace

Ireland: 3 year on-site, next business day, repair or loan