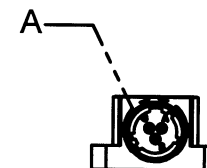
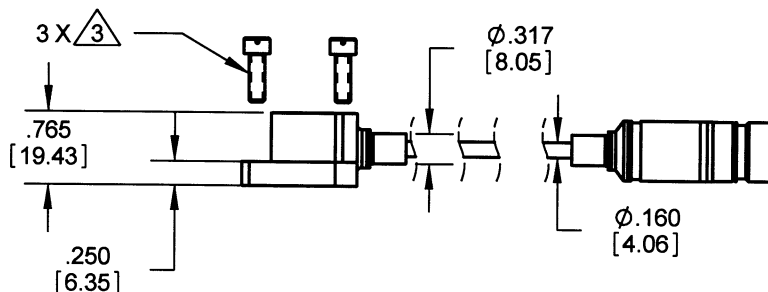
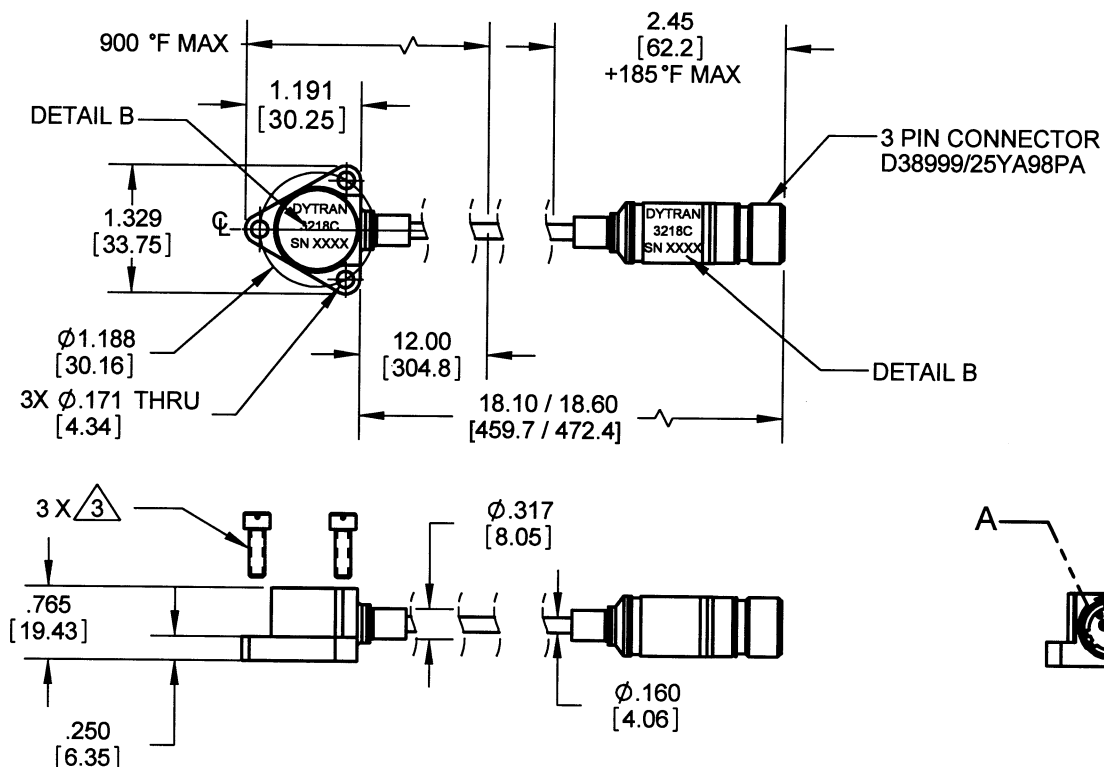
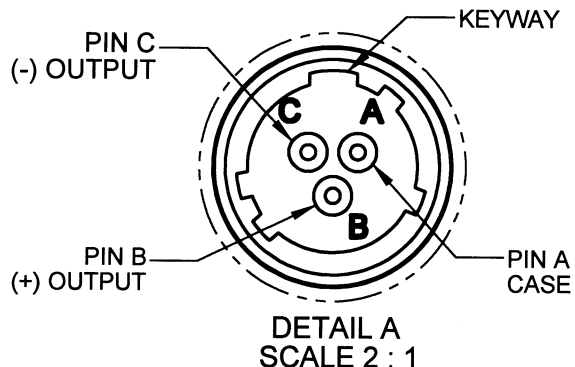


**PROPRIETARY AND CONFIDENTIAL**

THE INFORMATION CONTAINED IN THIS DRAWING IS THE SOLE PROPERTY OF DYTRAN INSTRUMENTS INC. ANY REPRODUCTION IN PART OR AS A WHOLE WITHOUT THE WRITTEN PERMISSION OF DYTRAN INSTRUMENTS, INC. IS PROHIBITED

**REVISIONS**

REV.	ECN	DESCRIPTION	BY/DATE	CHK	APPR
A	5594	INITIAL RELEASE	EP 11/07/08	<i>DL</i>	<i>Aug</i>



3 MOUNTING SCREWS 8-32 UNC-2A (DYTRAN MODEL 6535) SUPPLIED

2. MAX TEMP 900°F APPLIES ONLY TO THE DESIGNATED AREA OF THE SYSTEM

1. NOMINAL SENSITIVITY 1.6pC/G

RECOMMENDED MOUNTING PREPARATION  
SELECT SURFACE FLAT TO .001 T.I.R.  
TAP THREE HOLES 8-32 UNC-2B X .30 [7.6] MINIMUM DEPTH  
EQUALLY SPACED ON  $\phi$  1.188 [30.16]

**NOTES UNLESS OTHERWISE SPECIFIED**

UNLESS OTHERWISE SPECIFIED:  
INTERPRET DIM & TOL PER ASME Y14.5M - 1994.  
REMOVE BURRS.  
COUNTERSINK INTERNAL THDS 90° TO MAJOR DIA.  
CHAM EXT THDS 45° TO MINOR DIA.  
THD LENGTHS AND DEPTHS ARE FOR MIN FULL THDS.  
THDS PER MIL-S-7742.  
DIMENSIONS APPLY AFTER FINISHING.  
ALL MACHINED SURFACES.  
TOTAL RUNOUT WITHIN .005.  
BREAK SHARP EDGES .005 TO .010.  
MACHINED FILLET RADII .005 TO .015.  
WELDING SYMBOLS PER AWS A2.4.  
ABBREVIATIONS PER MIL-STD-12.

UNLESS OTHERWISE SPECIFIED:  
DIMENSIONS ARE IN INCHES.  
DIMENSIONS IN BRACKETS [ ] ARE IN MILLIMETERS  
TOLERANCES ARE:

INCH	METRIC	ANGLES
.XX ± .03	.X ± 0.8	± 1°
.XXX ± .010	.XX ± 0.25	

MATERIAL

FINISH

DO NOT SCALE DRAWING

CONTRACT NO.

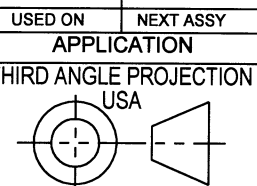



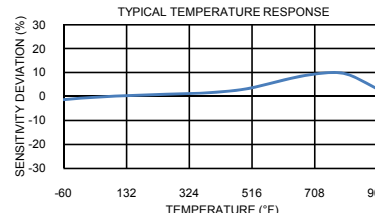
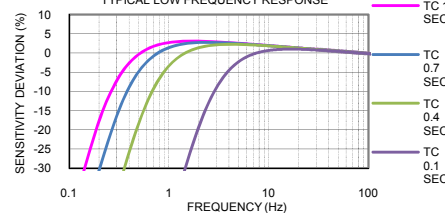
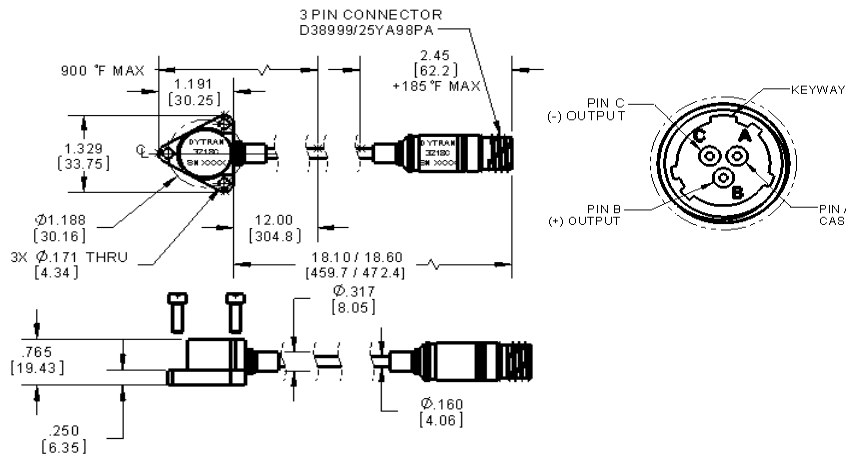

TITLE:

**OUTLINE / INSTALLATION  
MODEL 3218C**

APPROVALS		DATE
ORIG	EP	11/07/08
CHK	<i>DL</i>	12/03/18
APP		
APP		

SIZE	CAGE CODE	DWG. NO.	REV
<b>A</b>	<b>2W033</b>	<b>127-3218C</b>	<b>A</b>
SCALE: 1:2	SOLIDWORKS	SHEET 1 OF 1	



3218C		PERFORMANCE SPECIFICATION				DOC NO PS3218C																			
		ACCELEROMETER, SINGLE AXIS DIFFERENTIAL, CHARGE MODE				REV B, ECN5889, 06/23/09																			
		<ul style="list-style-type: none"><li>• HIGH TEMPERATURE OPERATION</li><li>• EXTREME STABILITY OVER TEMPERATURE</li><li>• HERMETICALLY SEALED</li></ul>				<b>This family also includes:</b> <table border="1"><tr><td>Model</td><td></td><td></td><td></td><td></td><td></td></tr><tr><td></td><td></td><td></td><td></td><td></td><td></td></tr><tr><td></td><td></td><td></td><td></td><td></td><td></td></tr></table>		Model																	
Model																									
						Please, refer to the performance specifications of the products in this family for detailed description																			
						<b>Supplied Accessories:</b> 1) Model 6535 mounting screw (3) 2) Accredited Calibration Certificate (ISO 17025)																			
						<b>Notes:</b> [1] D38999/25YA98PA Series III connector. Mates With D38999/26WA98SA Connector [2] Actual sensitivity is given on a calibration certificate [3] Depends on the gain setting of the charge amplifier used [4] Low frequency response is the function of the discharge time constant of the charge amplifier used. Please, Refer to the plot below for frequency response for different time constants																			
<b>PHYSICAL</b>		ENGLISH		SI		 																			
Weight	accelerometer	5.5	oz	157	grams																				
	accelerometer and cable	6.83	oz	195	grams																				
Size, (Mounting dia x Height x Length)	Height	0.77	inches	19.43	mm																				
	Mounting dia	Ø1.19	inches	Ø30.20	mm																				
	Length	18.10 - 18.60	inches	459.70 - 472.40	mm																				
Connector[1]	Material	304 L		304 L																					
	Type	3 Pin		3 Pin																					
Housing	Material	304 L		304 L																					
Isolation	Pins to Housing	10GΩ MIN		10GΩ MIN																					
Sensing Element	Material	LGT		LGT																					
	Mode	Compression		Compression																					
<b>PERFORMANCE</b>																									
Sensitivity [2]		1.6	pC/g	0.16	pC/m/s <sup>2</sup>																				
Acceleration Range		[3]	g peak	[3]	m/s <sup>2</sup> peak																				
Frequency Range, ±10%		[4] - 10,000	Hz	[4] - 10,000	Hz																				
Resonance Frequency		35	kHz	35	kHz																				
Transverse Sensitivity		5	%	5	%																				
Insulation Resistance (75°F)		10	GΩ	10	GΩ																				
Insulation Resistance (400°F)		10	GΩ	10	GΩ																				
Insulation Resistance (700°F)		3.5	MΩ	3.5	MΩ																				
Insulation Resistance (900°F)		485	kΩ	485	kΩ																				
Operating Temperature		-60 to 900	°F	-51 to 482	°C																				
Capacitance, pin to pin		80	pF	80	pF																				
Unbalance between pins		<2	pF	<2	pF																				
Linearity		1	%	1	%																				
<b>ENVIRONMENTAL</b>																									
Maximum Vibration		1000	g peak	9810	m/s <sup>2</sup>																				
Maximum Shock		2000	g peak	19620	m/s <sup>2</sup>																				
Seal		HERMETIC		HERMETIC																					
Magnetic Sensitivity at 100 Gauss		0.00007	g/Gauss	0.00069	m/s <sup>2</sup> Gauss																				
Base Strain Sensitivity		0.05	g/με	0.4905	m/s <sup>2</sup> /με																				
						Units on the line drawing are in inches, units in brackets are in millimeters. Refer to document 127-3218C for more information																			
		21592 Marilla Street, Chatsworth, California 91311 Phone: 818.700.7818 Fax: 818.700.7880 www.dytran.com For permission to reprint this content, please contact info@dytran.com																							