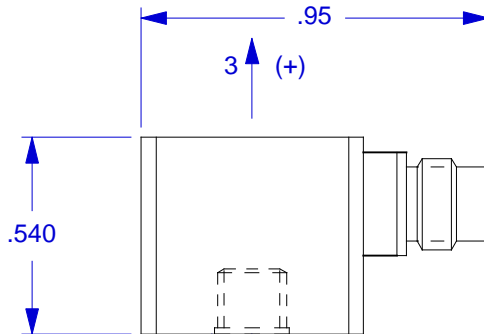


**VIEW LOOKING INTO CONNECTOR**

**PINOUT**

- PIN #1 SIG/PWR AXIS 1 (X)
- PIN #2 SIG/PWR AXIS 2 (Y)
- PIN #3 SIG/PWR AXIS 3 (Z)
- PIN #4 GND RETURN, COMMON

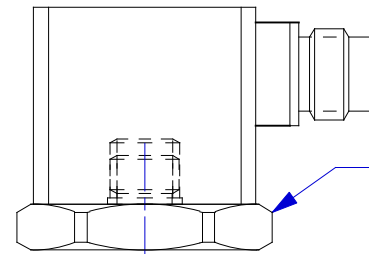
CONNECTOR MATES WITH  
DYTRAN CABLE 6430XX



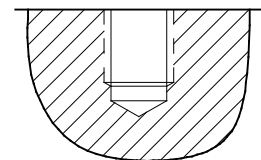
MOUNTING  
SURFACE

10-32 MOUNTING  
HOLE

MODEL 6200 10-32  
MOUNTING STUD,  
(SUPPLIED)



SUGGESTED MOUNTING METHOD:  
THREAD MODEL 6213 ADAPTOR  
INTO 3093A1 HOUSING. ADHESIVE  
MOUNT TO TEST SURFACE, (NO 10-  
32 PORT NEEDED)



**MOUNTING PORT PREPARATION:**  
SELECT SURFACE FLAT TO .001 TIR  
DRILL #21 (.159) DIA. X .250 DEEP  
BOTTOM TAP 10-32 UNF-2B X .200  
MIN. DEPTH PERF. THD.

4. MOUNTING TORQUE ON HEX FLATS OF 6213 ADAPTOR: 10 TO 15 LB-INCHES. DO NOT OVERTORQUE.
3. SIGNAL POLARITY IS POSITIVE FOR ACCELERATION IN THE DIRECTION OF AXES ARROWS.
2. SIG/PWR GROUND IS ISOLATED FROM CASE, 10 MEGOHMS, MIN.
1. ENVIRONMENTAL SEAL: HERMETIC.

**EXCEPT AS OTHERWISE NOTED**

ALL DIMENSIONS IN INCHES  
TOLERANCE: .XXX = ± .XX = ±  
SURFACE FINISH EXCEPT AS NOTED ✓  
BREAK EDGES TO DEBURR  
RADIUS OR CHAMFER

THESE DIAS TO T.I.R.

FILLETS - MAX RAD.



CHATSWORTH, CA.

SCALE		2X		REV		-		DATE		-		ECN		-									
DATE				6/22/00				PART NO.				MODEL 3093B1											
DRAWN		N.C.		CHECKED		R.A.		MAT'L															
APPROVED								NEXT ASSEMBLY						USED ON				3093B1					
TITLE												DWG NO.											
OUTLINE/INSTALLATION DRAWING, MODEL 3093B1												127-3093B1											
												SHEET 1 OF 1											



## SPECIFICATIONS, MODEL 3093B1 TRIAXIAL ACCELEROMETER

SPECIFICATIONS	VALUE	UNITS
PHYSICAL		
WEIGHT	13.5	GRAMS
SIZE (HEIGHT x WIDTH x DEPTH)	0.54 x .59 x .59	INCHES
MOUNTING (TAPPED HOLE IN BASE)	10-32 STUD MOUNT	
CONNECTOR [1]	4-PIN [3]	
MATERIAL, HOUSING/CONNECTOR	TITANIUM ALLOY	
PERFORMANCE		
SENSITIVITY, +15 -10% [2]	100	mV/G
RANGE, F.S. (each axis)	+/- 50	G
FREQUENCY RESPONSE, +/- 10%	2 to 5000	Hz
ELEMENT NATURAL FREQUENCY, NOM.	30	kHz
EQUIVALENT ELECTRICAL NOISE	.007	G, RMS
LINEARITY [3]	1	%F.S.
TRANSVERSE SENSITIVITY, MAX,	5	%
SIGNAL POLARITY	POSITIVE FOR MOTION IN DIRECTION OF ARROWS ETCHED ON HOUSING	
ENVIRONMENTAL		
MAXIMUM VIBRATION	+/- 100	G
MAXIMUM SHOCK	3000	G
TEMPERATURE RANGE	-60 to +250	°F
ENVIRONMENTAL SEAL	HERMETIC	
COEFFICIENT OF THERMAL SENSITIVITY	.03	%/°F
ENVIRONMENTAL		
SUPPLY CURRENT RANGE, (each axis) [4]	2-to 20	mA
COMPLIANCE (SUPPLY) VOLTAGE RANGE (each axis)	+18 to +30	VDC
OUTPUT IMPEDANCE, TYP.	100	OHMS
OUTPUT BIAS VOLTAGE, NOM.	+10	VDC
DISCHARGE TIME CONSTANT, NOM.	0.5	SEC
GROUND ISOLATION [5]	10, MIN.	MEGOHMS

### NOTES:

- [1] Connector mates with Dytran cable assy. Model 6430AXX. (XX = length in feet)
- [2] Reference sensitivity measured at 100 Hz, 1 G RMS per ISA RP 37.2
- [3] Linearity is % of specified full scale (or any lesser full-scale range), zero-based best fit straight-line method.
- [4] Power only with Dytran LIVM power unit or other Dytran-compatible constant current type power unit. If power is applied without current limiting protection, the internal amplifier will be immediately destroyed.
- [5] Case ground isolation is achieved by internal means.