

D-Link Quick Installation Guide

This product can be set up using any current web browser, i.e., Internet Explorer 6 or Netscape Navigator 6.2.3.



DI-624
Xtreme G 2.4GHz
Wireless Router

Before You Begin

1. If you purchased this router to share your high-speed Internet connection with other computers, you must have either an Ethernet-based Cable or DSL modem with an established Internet account from an Internet Service Provider (ISP).
2. It's best to use the same computer that is connected to your modem for configuring the DI-624 Multimode Wireless Router. The DI-624 acts as a DHCP server and will assign all the necessary IP address information on your network. **See Appendix at the end of this Quick Installation Guide or the Manual on the CD-ROM for setting each network adapter to automatically obtain an IP address.**

Check Your Package Contents



DI-624 Xtreme G 2.4GHz Wireless Router



CD-ROM (containing Manual and Warranty)



Ethernet (Straight Through) Cable



5V 3A DC Power Adapter



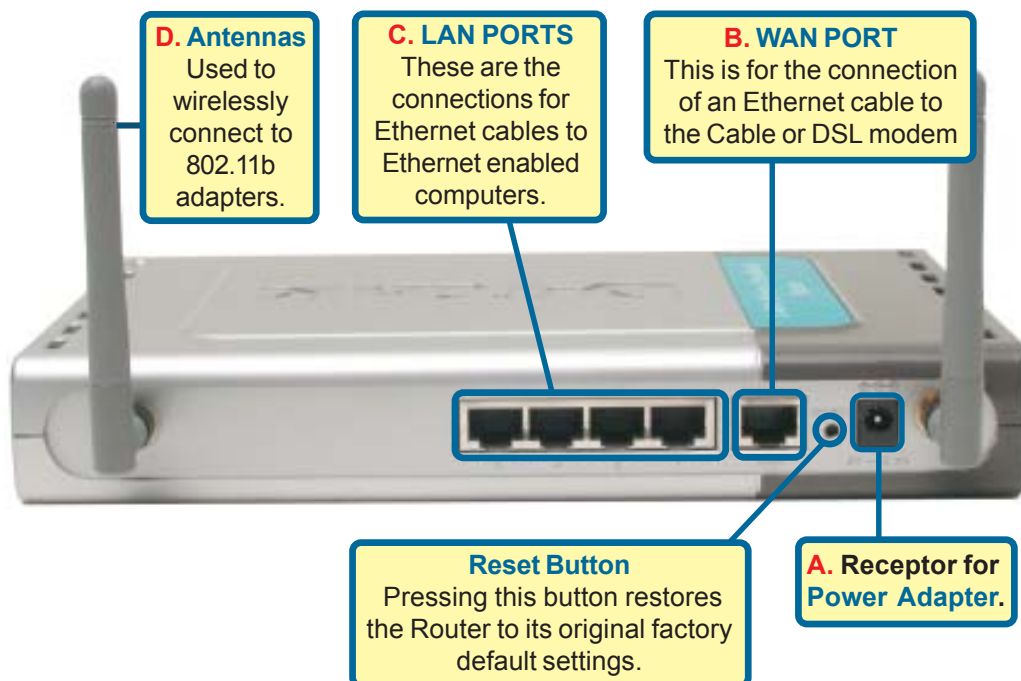
Using a power supply with a different voltage rating will damage and void the warranty of this product.

If any of the above items are missing, please contact your reseller.

1

Connecting The DI-624 Wireless Router To Your Network

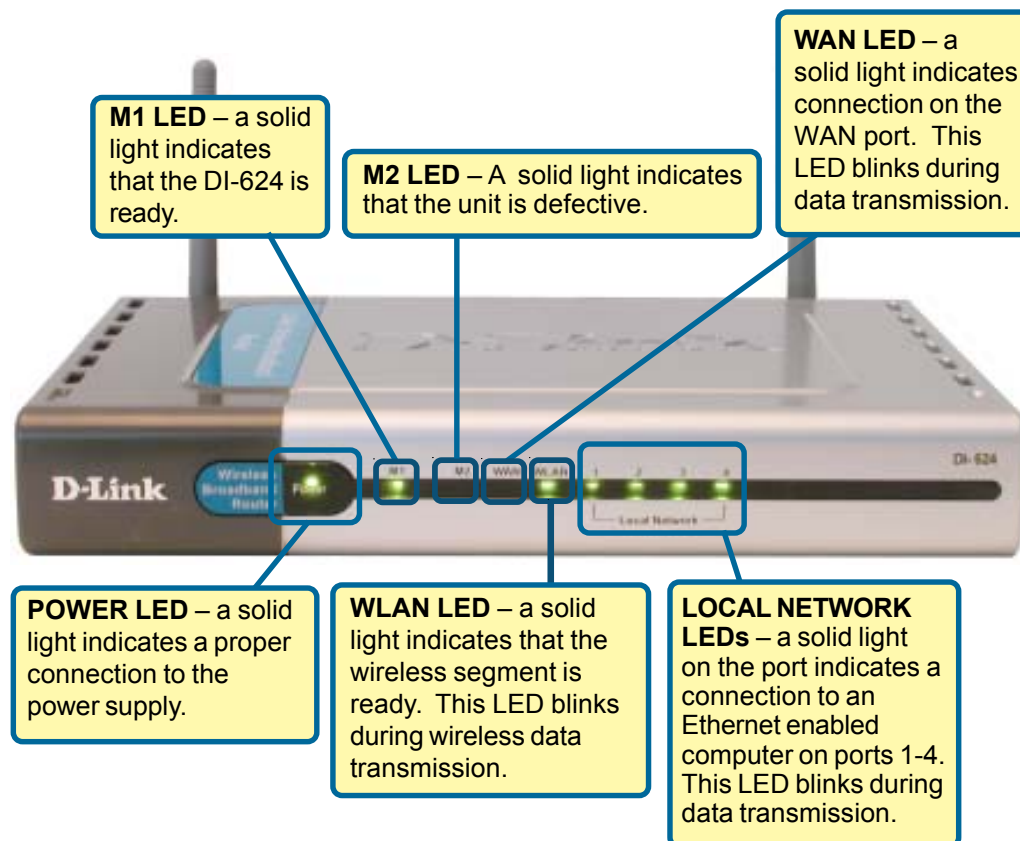
- A. First, connect the power adapter to the **receptor** at the back panel of the DI-624 and then plug the other end of the power adapter to a wall outlet or power strip. The Power LED will turn **ON** to indicate proper operation.
- B. Insert one end of an Ethernet cable to the **WAN port** on the back panel of the DI-624 and the other end to the Ethernet port located on your Cable or DSL modem. The WAN LED light will illuminate to indicate proper connection.
- C. Insert an Ethernet cable to **LAN port 1** on the back panel of the DI-624 and an available Ethernet port on the network adapter in the computer you will use to configure the DI-624. The LED light for LAN Port 1 will illuminate to indicate proper connection. (Note: The WAN Port and LAN Ports on the DI-624 are Auto-MDI/MDIX. Meaning you can use a straight-through or crossover-cable to the WAN Port and LAN Ports.
- D. Computers equipped with 802.11b wireless adapters will be able to connect to the DI-624. The DWL-G650 AirExtreme Wireless Cardbus Adapter and the DWL-G520 AirExtreme Wireless PCI Adapter will be able to connect out of the box with the router using their default wireless settings.



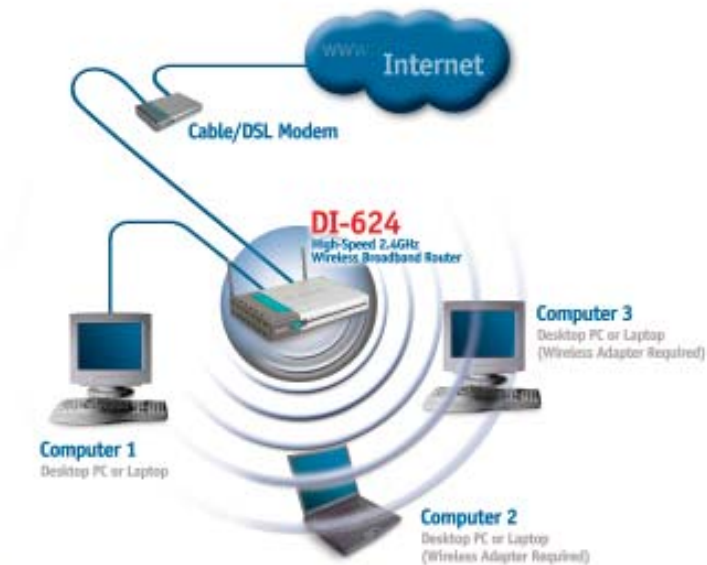
2 Restart Your Computer

3 Connecting Additional Computers To The DI-624

Using additional Ethernet (CAT5 UTP) cables, connect your Ethernet-equipped computers to the remaining Ethernet LAN ports on the back panel of the DI-624.



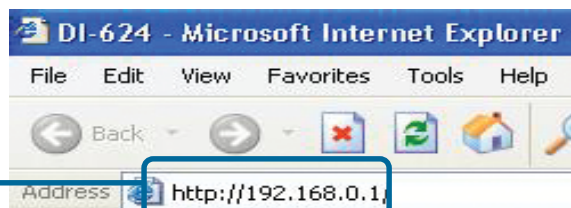
When you have completed the steps in this *Quick Installation Guide*, your connected network should look similar to this:



4

Using The Setup Wizard

Open your Web browser and type “**http://192.168.0.1**” into the URL address box. Then press the **Enter** or **Return** key.



The logon pop-up screen will appear.

Type “**admin**” for the username and leave the password field blank.



Click **OK**

4 The Setup Wizard (continued)

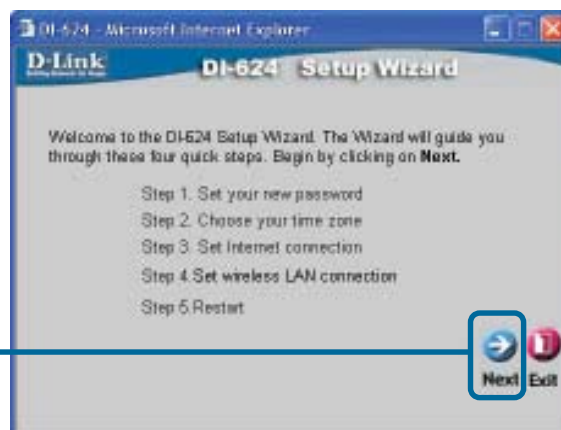
Once you have logged in, the **Home** screen will appear.

Click **Run Wizard**



You will see the following screens

Click **Next**



Set up your new password.

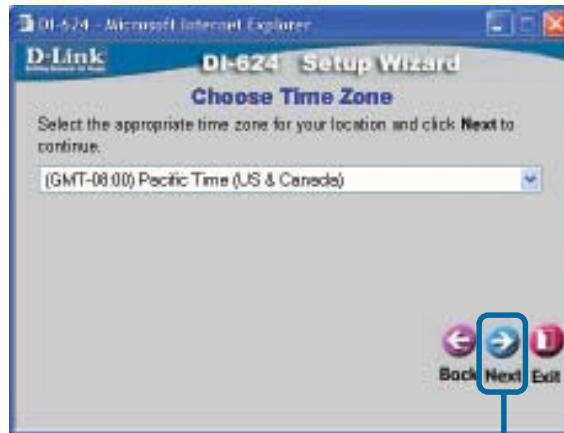
You have the option to establish a password.

Click **Next**



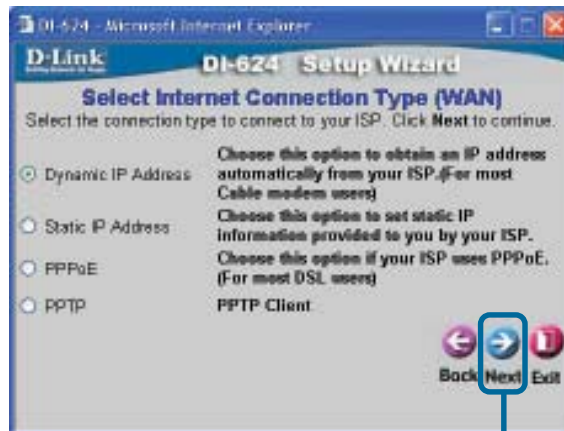
4 The Setup Wizard (continued)

Choose your time zone from the drop down list.




Click **Next**

Select your Internet Connection. You will be prompted to select the type of Internet connection for your router.



Click **Next**

 If you are unsure of which setting to select, please contact your Internet Service Provider.

4 The Setup Wizard (continued)

If you selected **Dynamic IP Address**, this screen will appear: (Used mainly for Cable Internet service.)

Click the **"Clone MAC Address"** button to automatically copy the MAC address of the network adapter in your computer. You can also manually type in the MAC address.

What is a MAC address? Each network adapter has a discrete Media Access Control (MAC) address. Note that some computers and peripherals may already include built-in network adapters.

Click **Next**

The screenshot shows the 'Set Dynamic IP Address' screen of the D-Link DI-624 Setup Wizard. It includes fields for 'Host Name' (pre-filled with 'DI-624') and 'MAC' (pre-filled with '00 - 03 - 2F - FF - FD - 84'). A 'Clone MAC Address' button is highlighted with a blue box. At the bottom right, there are three buttons: 'Back', 'Next', and 'Exit'. The 'Next' button is highlighted with a blue box and a line pointing to the 'Click Next' instruction.

If your ISP requires a **Static IP Address**, and this option is selected, then this screen will appear:

Enter the IP address information originally provided to you by your ISP. You will need to complete all the required fields.

Click **Next**

The screenshot shows the 'Set Static IP Address' screen of the D-Link DI-624 Setup Wizard. It includes fields for 'WAN IP Address', 'WAN Subnet Mask', 'WAN Gateway Address', 'Primary DNS Address', and 'Secondary DNS Address'. All fields are pre-filled with '0.0.0.0'. At the bottom right, there are three buttons: 'Back', 'Next', and 'Exit'. The 'Next' button is highlighted with a blue box and a line pointing to the 'Click Next' instruction.

4 The Setup Wizard (continued)

If your ISP uses **PPPoE** (Point-to-Point Protocol over Ethernet), and this option is selected, then this screen will appear: (Used mainly for DSL Internet service.)

Please be sure to remove any existing PPPoE client software installed on your computers.

Enter in the username and password provided to you by your ISP.

D-Link DI-624 Setup Wizard
Set PPPoE

The service name is optional but may be required by your ISP. Click **Next** to continue.

User Name:
Password:
Retype Password:
Service Name (optional):

Back Next Exit

Click **Next**

Wireless Setup.

The default wireless settings for your 802.11b wireless network are:

SSID = **default**

Channel = **6**

You can change these settings to match an existing wireless network.

D-Link DI-624 Setup Wizard
Set 802.11g Wireless LAN Connection

Enter in the SSID name and Channel number to be used for the Wireless Access Point. Click **Next** to continue.

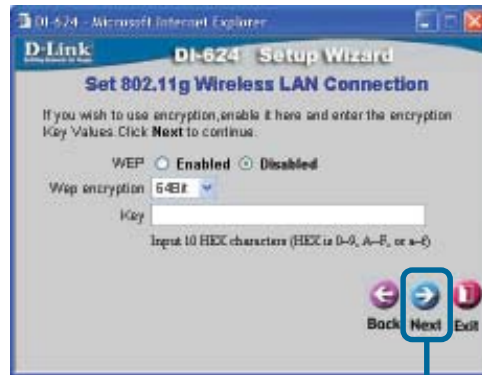
SSID:
Channel:

Back Next Exit

Click **Next**

4 The Setup Wizard (continued)

If you wish to use encryption for your 802.11b network, the DI-624 is capable of three levels of wireless encryption - 64-bit, and 128-bit. **By default the encryption is disabled.** You can change the encryption settings for more secure wireless communication.

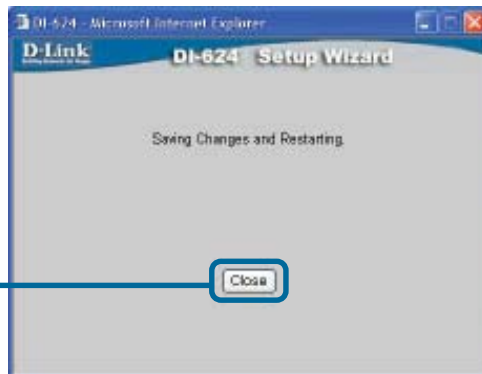


Click **Next**

5 Your Setup is Complete!



Click **Restart**



Click **Restart**

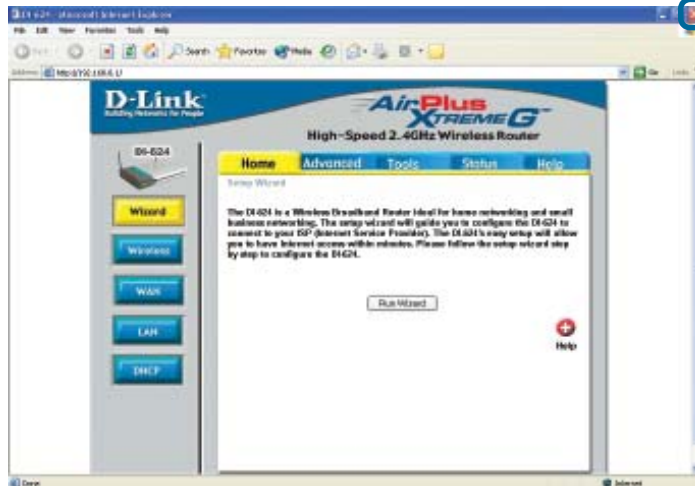
Test Internet Connection.

You will be returned to the **Home** tab.

Click to **Exit**

Then **relaunch** your Web browser (i.e., *Internet Explorer* or *Netscape Navigator*), to link to your favorite Web site to test your Internet connection.

For additional settings or information, refer to the **Advanced**, **Tools**, or **Status** tabs on the web-management interface; or to the Manual located on the CD.



APPENDIX (continued)

To connect to the network, make sure the network adapter in your computer is configured properly. Here's how to configure the network adapter to obtain an IP address automatically for the DI-624 Broadband Router.

For **Microsoft Windows XP**:
Go to **Start > right click on My Network Places >**
select **Properties > Double-click** on the **Network Connection** associated with the Ethernet adapter (i.e., D-Link DFE-530TX+).

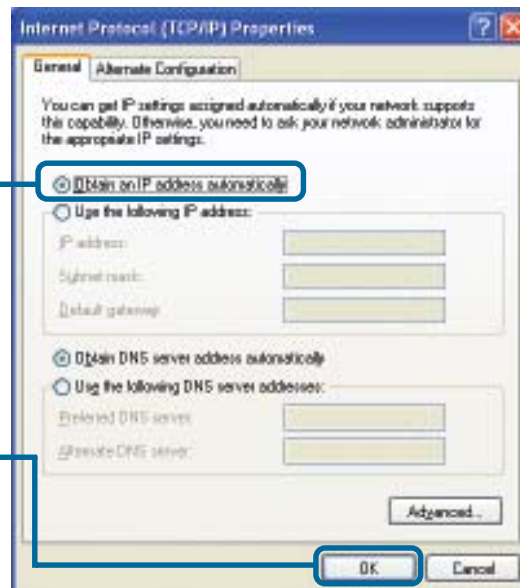
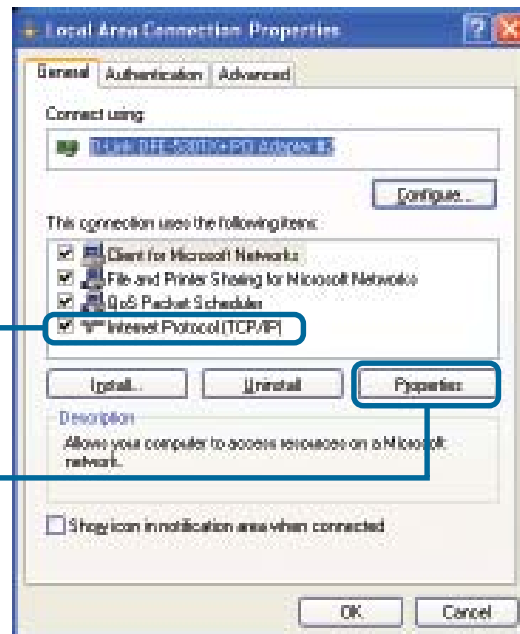
Click **Internet Protocol (TCP/IP)**

Click **Properties**

Select **Obtain an IP address automatically**

Click **OK**

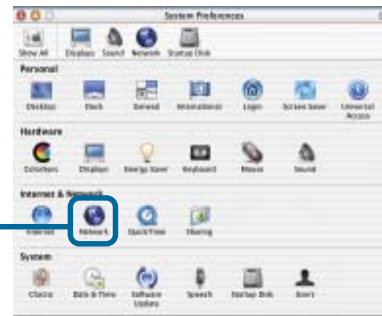
Restart your computer



For **Apple Macintosh OS X**:

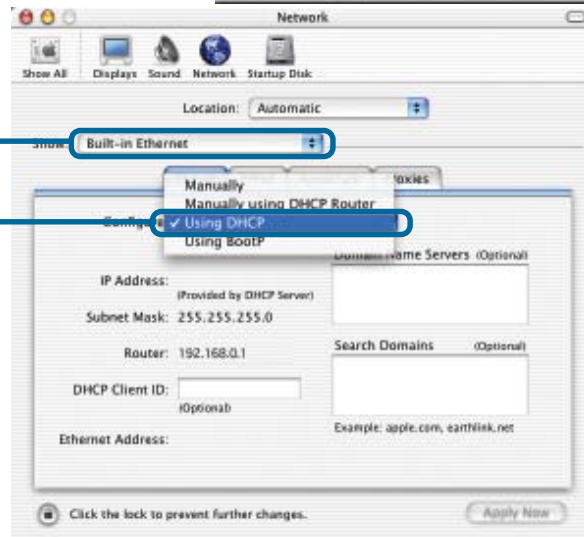
Go to the **Apple Menu** Click on **Network** and Select **System Preferences**

Click on **Network**



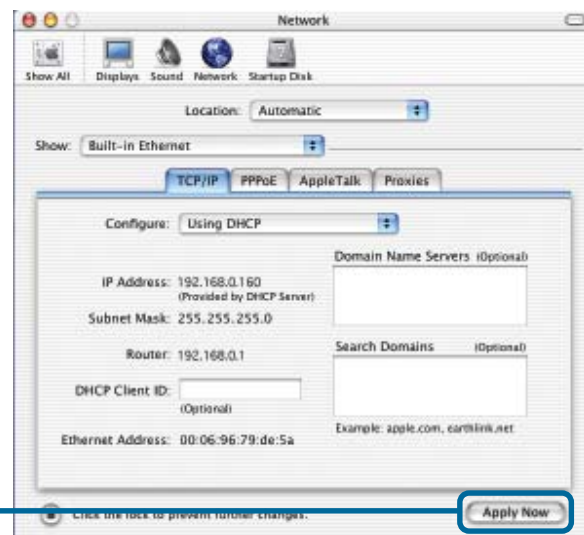
Select **Built-in Ethernet** in the show pull down menu

Select **Using DHCP** in the Configure pull down menu



Click on **Apply Now**

The IP address information, the Subnet Mask, the Router's IP address and the Ethernet adapter address will appear



Technical Support

You can find the most recent software and user documentation on the **D-Link** website.

D-Link provides free technical support for customers within the United States for the duration of the warranty period on this product.

U.S. customers can contact **D-Link** technical support through our web site or by phone.

D-Link Technical Support over the Telephone:

(877) 453-5465

24 hours a day, seven days a week

D-Link Technical Support over the Internet:

<http://support.dlink.com>

