

Canon

PUB. DIM-0996-000

WM-V1

キャノン ワイヤレスマイクロホン

Canon Wireless Microphone

Microphone sans fil Canon

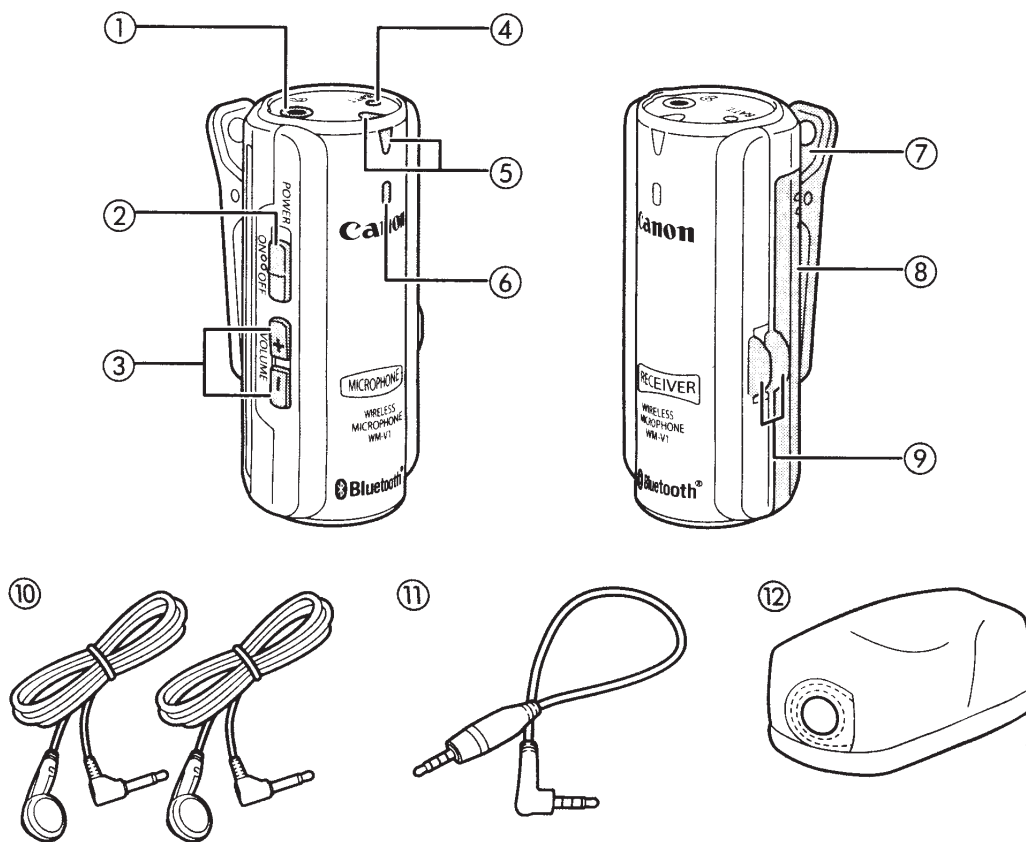
Canon Funkmikrofon

Microfono Wireless Canon

Micrófono Wireless Canon

Беспроводной микрофон Canon





各部の名称

- ① イヤホン端子
- ② 電源スイッチ
- ③ ボリューム調節ボタン
- ④ 電池残量警告ランプ
- ⑤ 通信確認ランプ
- ⑥ マイクユニット (收音部)
- ⑦ 装着クリップ
- ⑧ 電池ふた
- ⑨ ケーブルフック
- ⑩ イヤホン (モノラル) × 2
- ⑪ 接続ケーブル
- ⑫ ウィンドスクリーン

Names of parts

- ① Earphone jack
- ② POWER switch
- ③ VOLUME +/- buttons
- ④ BATT. (battery warning) indicator
- ⑤ Communication indicator
- ⑥ Microphone element
- ⑦ Lapel clip
- ⑧ Battery compartment cover
- ⑨ Cable clamp
- ⑩ Monaural earphone (x 2)
- ⑪ Connecting cable
- ⑫ Windscreen

- ⑦ Reversclip
- ⑧ Batteriefachdeckel
- ⑨ Kabelklemme
- ⑩ Mono-Ohrhörer (2x)
- ⑪ Verbindungskabel
- ⑫ Windschutz

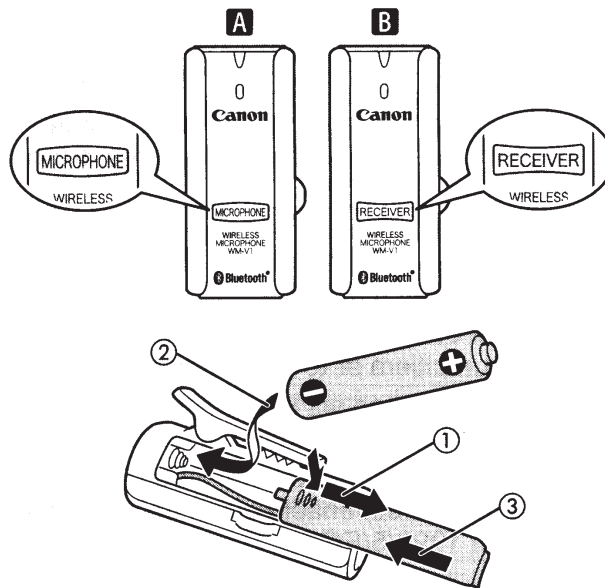
Nomi delle parti

- ① Jack auricolare
- ② Interruttore POWER
- ③ Pulsanti VOLUME +/-
- ④ Indicatore esaurimento batteria BATT.
- ⑤ Indicatore comunicazione
- ⑥ Elemento microfono
- ⑦ Clip
- ⑧ Coperchio vano portabatteria
- ⑨ Fermacavo
- ⑩ Auricolare mono (x 2)
- ⑪ Cavo di connessione
- ⑫ Protezione antivento

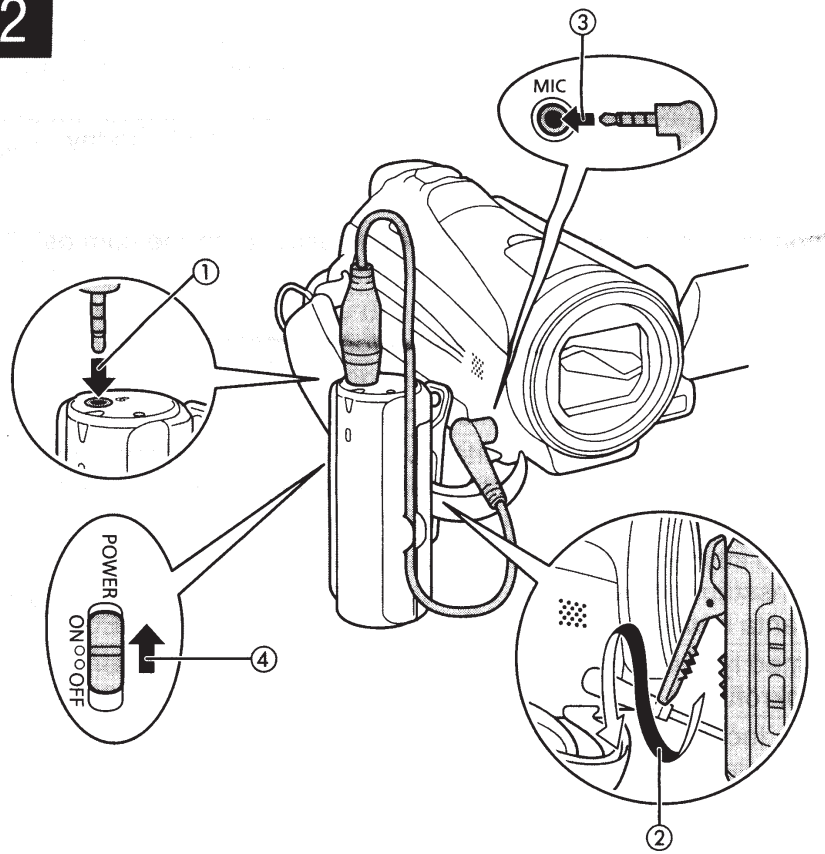
Nombres de las partes

- ① Toma de auriculares
- ② Interruptor POWER
- ③ Botones VOLUME +/-
- ④ Indicador BATT.

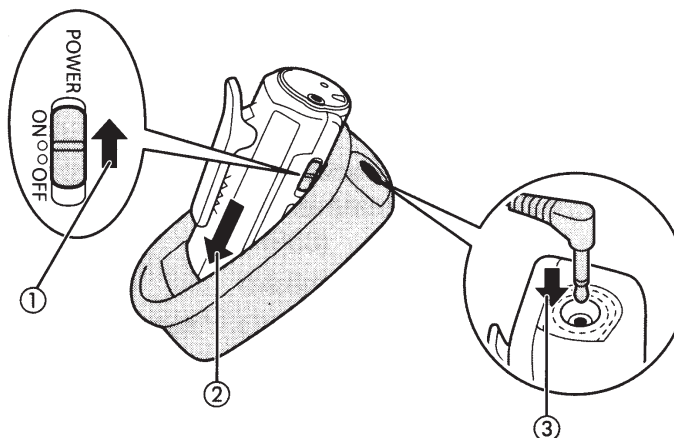
1



2



3



Thank you for purchasing the WM-V1 Wireless Microphone.

The WM-V1 consists of a microphone (transmitter) unit and a receiver unit, and was developed for exclusive use with Canon HD camcorders*.

Using Bluetooth wireless communication between the microphone and receiver, the WM-V1 allows for high-quality sound recording in a variety of locations. By placing the microphone unit to the lapel area of the subject's clothing and connecting the receiver to the camcorder using the supplied connecting cable, you can record sound from faraway subjects that would be difficult to pick up using only the camcorder's built-in microphone. With camcorder models that feature the Audio Mix function, you can even mix and record sound from the WM-V1 and sound from the camcorder's built-in microphone.

* Refer to the official Canon Web site, catalog or your camcorder's instruction manual for details about compatible camcorder models.

Please read these instructions carefully before using the microphone and keep them for future reference. Refer also to your camcorder's instruction manual.

The Bluetooth® word mark and logos are registered trademarks owned by Bluetooth SIG, Inc. and any use of such marks by Canon Inc. is under license.

Using the windscreen

By attaching the windscreen to the microphone, you can reduce noise caused by wind or breathing. We recommend attaching the windscreen when shooting in outdoor locations.


Inserting batteries in the microphone and receiver units

The WM-V1's units are clearly labeled "MICROPHONE" (fig. 1-A) and "RECEIVER" (fig. 1-B). Each unit requires one commercially available battery (not included). Use two AAA (LR06) alkaline batteries or two AAA (HR03) rechargeable NiMH batteries.

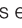
- 1 Slide and remove the microphone's battery compartment cover (fig. 1-1).
- 2 Insert one battery matching the + / - polarity marks (fig. 1-2).
- 3 Close the battery compartment cover (fig. 1-3).
- 4 Repeat steps 1 to 3 to insert the second battery into the receiver in the same way.

Connecting the microphone and receiver

Attach the microphone to the subject's clothing and connect the receiver to the camcorder.

- 1 Insert the straight plug of the connecting cable into the receiver's earphone jack (fig. 2-1).
- 2 Using the lapel clip, attach the receiver to the camcorder's grip belt (fig. 2-2).
- 3 Insert the L-shaped plug of the connecting cable into the camcorder's MIC terminal (fig. 2-3).
 - If necessary, pass the connecting cable through the cable clamp.
- 4 Set the receiver's POWER switch to ON (fig. 2-4).
 - The receiver's communication indicator flashes in blue.
- 5 Set the microphone's POWER switch to ON (fig. 3-1).
 - The microphone's communication indicator flashes in blue.
 - Bluetooth wireless communication between the microphone and the receiver will be established automatically. When wireless communication is established, the communication indicators on both units will stop flashing and stay constantly on.
 - When the microphone's or the receiver's battery is getting low, the BATT. (battery warning) indicator will flash in red. Replace the battery as soon as possible.
- 6 Place the windscreen on the microphone (fig. 3-2).
 - Place the windscreen so that the earphone jack can be easily connected through the opening in the windscreen (fig. 3-3).
- 7 Using the lapel clip, attach the microphone to the subject's clothing.
 - If the microphone is not attached securely, it may rub against the subject's clothes and rustling noises may be picked up. Make sure to attach it securely.
- 8 Turn on the camcorder.
 - Unless [Audio Mix] is set to [On], the  (Wind Screen off) icon will appear on the screen.

Before shooting

- If your camcorder is equipped with a  (headphones) terminal, check that the microphone is functioning correctly by connecting to it one of the supplied earphones or a pair of headphones, speaking into the microphone, and monitoring the sound that is picked up.
- Depending on the camcorder used, you may be able to display an audio level indicator on your camcorder's screen. Use the audio level indicator to check the audio recording levels.
- Depending on the camcorder used, you may be able to manually adjust the audio recording level. Select [Mic.Level] from the camcorder's FUNC. panel and set it to [M Manual].
- Depending on the camcorder used, you may be able to mix and record audio from both the WM-V1 and the camcorder's built-in microphone (Audio Mix function). Set [Audio Mix] to [On] and adjust the audio mix balance.

Because audio from the WM-V1 is processed digitally, when the WM-V1's microphone is too close to the camcorder's built-in microphone there may be a slight lag between the sound from each microphone, creating an echo (reverberation) effect in the recorded sound. In such case, increase the distance between the WM-V1's microphone and the camcorder.

Checking sound from the microphone using the supplied earphone

- You can check the sound picked up with the microphone by connecting one of the supplied earphones to the microphone's earphone jack. Adjust the volume as necessary with the VOLUME +/- buttons. (The volume will be reset to its default value when the microphone unit is turned off.)
- You can connect both supplied earphones to the receiver and the microphone units to allow transceiver communication.
- Because audio from the WM-V1 is processed digitally, there may be a slight lag between the actual sound and the audio you hear from the earphone, creating an echo effect. This is not a malfunction.

Bluetooth wireless communication

- Bluetooth wireless communication is set up to be established automatically only between the microphone and receiver units of the WM-V1. Bluetooth wireless communication with devices other than the WM-V1 is not supported.
- If the microphone is too close to the camcorder, RF interference may cause noise in the recorded sound. Keep the microphone at least 1 m (3 ft.) away from the camcorder during use.

Status of the communication indicator

Status	Microphone	Receiver
Unit is turned ON	Flashing	
Wireless communication is established	Continuously on	
Microphone unit is turned OFF (receiver is still ON)	Off*	Flashing
Receiver unit is turned OFF (microphone is still ON)	Flashing	Off*

* The indicator will dim gradually until it is completely off.

After using the WM-V1

- 1 Turn off the camcorder.
- 2 Turn off the microphone and receiver.
- 3 Disconnect the connecting cable from the camcorder's MIC terminal.
- 4 Remove the receiver from the camcorder.
- 5 Disconnect the connecting cable from the receiver.

Maintenance

- Clean the units by dusting them lightly with a soft, dry cloth. Do not use thinner, benzene, alcohol, or other volatile cleaners or solvents.
- Keep the earphone jacks clean at all times. The microphone will not work properly if the terminals are dirty.
- The windscreen cannot be washed. If it gets wet, pat it with a soft, dry cloth and let it dry naturally.

! IMPORTANT

- If you do not intend to use the WM-V1 for a long period of time, remove the batteries from both the microphone and receiver units.
- Do not touch the windscreen, microphone or receiver while recording, as this will cause noise to be recorded.
- Using the microphone close to high-voltage equipment or to devices that emit strong electromagnetic fields (high-voltage lines, electrical towers, some cellular phones, etc.) may cause noise to be recorded.
- When carrying the camcorder with the receiver attached, be sure to support the camera body. Never carry the camcorder by the receiver.
- Test the microphone by speaking into it. Do not tap the microphone or blow into it.
- Do not drop or jolt the microphone or receiver, as this may damage it or impair its performance. Handle the microphone and receiver with care.
- Do not disassemble or touch the interior parts of the microphone or receiver. Consult your dealer or a Canon Service Center if problems occur.
- Do not use or leave the microphone or receiver in hot, humid places such as inside a car in hot weather or in direct sunlight.
- Do not leave the receiver attached to the camcorder when storing the camcorder in a case, etc.

Specifications

Wireless Communication

Communication system:	Bluetooth Ver. 2.0
Power class:	Bluetooth Power Class 1
Frequency band used:	2.4 GHz band (2400 – 2483.5 MHz)
Profile:	A2DP
Communication range ¹ :	Approx. 50 m (164 ft.)

Microphone (transmitter)/Receiver

Directionality:	Non-directional, monaural
Frequency range:	500 Hz – 7 kHz
Power supply:	1 x AAA (LR03) alkaline battery or 1 x AAA (HR03) nickel-metal hydride (NiMH) rechargeable battery
Power consumption:	250 mW or less
Continuous operating time ² :	Approx. 3 hours (alkaline battery, ambient temperature at 25 °C (77 °F), volume level at default setting)
Earphone jack:	Ø 3.5 mm monaural minijack
Operating temperature:	Approx. 0 – 40 °C (32 – 104 °F)
Dimensions [W x H x D]: (excluding protrusions)	Approx. 29 x 68 x 37 mm (1.1 x 2.7 x 1.5 in.)
Weight (excluding battery):	Approx. 28 g (1 oz.)
Accessories:	Monaural earphones x 2, Connecting cable, Windscreen

¹ Estimated distance with no obstructions between the receiver and microphone. Obstructions such as people or metal objects may reduce the effective communication range.

² Actual time may vary depending on the manufacturer, storage conditions and other characteristics of the battery used.

Weight and dimensions are approximate. Errors and omissions excepted. Subject to change without notice.

Safety Precautions

WARNING!

- In the following cases, turn off the microphone and receiver units, remove the connecting cable and batteries and stop using the WM-V1 immediately. Continued use may present a risk of fire or electric shock.
 - If you detect smoke or strange odors.
 - If the microphone or receiver unit was dropped and broke open.
 - If water or other liquid was spilled into the microphone or receiver units.
- Keep the wireless microphone out of the reach of children.

- Do not insert metallic objects or other foreign objects inside the microphone or receiver units.
- Stop using the wireless microphone if it causes interference with other wireless devices.
- If you do not intend to use the wireless microphone for a long period of time, remove the batteries from both the microphone and receiver units.
- Handle the batteries with care. Do not handle batteries with wet hands.
- Never use leaking batteries and never expose batteries to excessive heat or fire.

CAUTION!

- Do not use the wireless microphone inside hospitals, medical clinics or onboard aircraft.
- Do not use the wireless microphone near medical equipment or sensitive electronic devices as it may affect their performance.

FCC/IC NOTICE

This device complies with Part 15 of the FCC Rules and RSS-Gen of IC Rules. Operation is subject to the following two conditions; (1) this device may not cause harmful interference, and (2) this device must accept any interference received, including interference that may cause undesired operation.

Note: This equipment has been tested and found to comply with the limits for class B digital device, pursuant to Part 15 of the FCC Rules. These limits are designed to provide reasonable protection against harmful interference in a residential installation. This equipment generates, uses and can radiate radio frequency energy and, if not installed and used in accordance with the instructions, may cause harmful interference to radio communications. However, there is no guarantee that interference will not occur in a particular installation. If this equipment does cause harmful interference to radio or television reception, which can be determined by turning the equipment off and on, the user is encouraged to try to correct the interference by one or more of the following measures:

- Reorient or relocate the receiving antenna.
- Increase the separation between the equipment and receiver.
- Connect the equipment into an outlet on a circuit different from that to which the receiver is connected.
- Consult the dealer or an experienced radio/TV technician for help.

This transmitter must not be co-located or operated in conjunction with any other antenna or transmitter.

Do not make any changes or modifications to the equipment unless otherwise specified in the manual. If such changes or modifications should be made, you could be required to stop operation of the equipment.

This equipment complies with FCC/IC radiation exposure limits set forth for an uncontrolled environment and meets the FCC radio frequency (RF) Exposure Guidelines in Supplement C to OET65 and RSS-102 of the IC radio frequency (RF) Exposure rules. This equipment has very low levels of RF energy that are deemed to comply without testing of specific absorption ratio (SAR).

Canadian Radio Interference Regulations

The Class B digital apparatus complies with Canadian ICES-003.

Areas of Use and Restrictions

You can use this product in the original country/region of purchase. You can also use the product in the countries/regions listed in the following table.

Please do not use this product in countries/regions it was not designed for. The use of radio waves is subject to local legislation and restrictions and unauthorized use of this product may be prohibited and fines may apply.

Original Country/Region of Purchase	Country/Region of Use
Canada, USA.	Canada, Hong Kong S.A.R., USA.
Australia, Austria, Belgium, Bulgaria, Cyprus, Czech Republic, Denmark, Estonia, Finland, France, Germany, Greece, Hong Kong S.A.R., Hungary, Iceland, Ireland, Italy, Latvia, Liechtenstein, Lithuania, Luxembourg, Malta, Netherlands, New Zealand, Norway, Poland, Portugal, Romania, Singapore, Slovakia, Slovenia, Spain, Sweden, Switzerland, United Kingdom.	All the countries/regions listed to the left.

Canon Inc. tímto prohlašuje, že tento DV840210 je ve shodě se základními požadavky a dalšími příslušnými ustanoveními směrnice 1999/5/ES.
Undertegnede Canon Inc. erklærer herved, at følgende udstyr DV840210 overholder de væsentlige krav og øvrige relevante krav i direktiv 1999/5/EF.
Hiermit erkläre <i>Canon Inc.</i> , dass sich das Gerät DV840210 in Übereinstimmung mit den grundlegenden Anforderungen und den übrigen einschlägigen Bestimmungen der Richtlinie 1999/5/EG befindet.
Käesolevaga kinnitab <i>Canon Inc.</i> seadme DV840210 vastavust direktiivi 1999/5/EÜ põhinõuetele ja nimetatud direktiivist tulenevatele teistele asjakohastele sätetele.
Hereby, Canon Inc., declares that this DV840210 is in compliance with the essential requirements and other relevant provisions of Directive 1999/5/EC.
Por medio de la presente Canon Inc. declara que el DV840210 cumple con los requisitos esenciales y cualesquiera otras disposiciones aplicables o exigibles de la Directiva 1999/5/CE.
ΜΕ ΤΗΝ ΠΑΡΟΥΣΑ Canon Inc. ΔΗΛΩΝΕΙ ΟΤΙ DV840210 ΣΥΜΜΟΡΦΩΝΕΤΑΙ ΠΡΟΣ ΤΙΣ ΟΥΣΙΩΔΕΙΣ ΑΠΑΙΤΗΣΕΙΣ ΚΑΙ ΤΙΣ ΛΟΙΠΕΣ ΣΧΕΤΙΚΕΣ ΔΙΑΤΑΞΕΙΣ ΤΗΣ ΟΔΗΓΙΑΣ 1999/5/EK.
Par la présente Canon Inc. déclare que l'appareil DV840210 est conforme aux exigences essentielles et aux autres dispositions pertinentes de la directive 1999/5/CE.
Con la presente <i>Canon Inc.</i> dichiara che questo DV840210 è conforme ai requisiti essenziali ed alle altre disposizioni pertinenti stabilite dalla direttiva 1999/5/CE.
Ar šo Canon Inc. deklarē, ka DV840210 atbilst Direktīvas 1999/5/EK būtiskajām prasībām un citiem ar to saistītajiem noteikumiem.
Šiuo Canon Inc. deklaruoja, kad šis DV840210 atitinka esminius reikalavimus ir kitas 1999/5/EB Direktyvos nuostatas.
Hierbij verklaart Canon Inc. dat het toestel DV840210 in overeenstemming is met de essentiële eisen en de andere relevante bepalingen van richtlijn 1999/5/EG.
Hawnhekk, <i>Canon Inc.</i> , jiddikjara li dan DV840210 jikkonforma mal- ħtiġijiet essenzjali u ma provvedimenti oħrajn relevanti li hemm fid- Direttiva 1999/5/EC.
Alulírott, <i>Canon Inc.</i> nyilatkozom, hogy a DV840210 megfelel a vonatkozó alapvető követelményeknek és az 1999/5/EC irányelv egyéb előírásainak.
Niniejszym Canon Inc. oświadcza, że DV840210 jest zgodny z zasadniczymi wymogami oraz pozostałymi stosownymi postanowieniami Dyrektywy 1999/5/EC.
Canon Inc. declara que este DV840210 está conforme com os requisitos essenciais e outras disposições da Directiva 1999/5/CE.
Canon Inc. izjavlja, da je ta DV840210 v skladu z bistvenimi zahtevami in ostalimi relevantnimi določili direktive 1999/5/ES.
Canon Inc. tímto vyhlasuje, že DV840210 splňa základné požiadavky a všetky príslušné ustanovenia Smernice 1999/5/ES.
<i>Canon Inc.</i> vakuuttaa täten että DV840210 tyyppinen laite on direktiivin 1999/5/EY oleellisten vaatimusten ja sitä koskevien direktiivin muiden ehtojen mukainen.
Härmed intygar <i>Canon Inc.</i> att denna DV840210 står i överensstämmelse med de väsentliga egenskapskrav och övriga relevanta bestämmelser som framgår av direktiv 1999/5/EG.
Hér með lýsir Canon Inc. yfir því að DV840210 er í samræmi við grunnkröfur og aðrar kröfur, sem gerðar eru í tilskipun 1999/5/EC.
Canon Inc. erklærer herved at utstyret DV840210 er i samsvar med de grunnleggende krav og øvrige relevante krav i direktiv 1999/5/EF.
С настоящия документ Canon Inc. декларира, че DV840210 е в съгласие с основните изисквания и съответните постановления на Директива 1999/5/EC.
Prin prezenta, Canon Inc. declară că acest DV840210 este conform cu cerințele principale și cu celelalte prevederi relevante ale Directivei 1999/5/EC.

Please contact the following address for the original Declaration of Conformity:

CANON EUROPA N.V.

Bovenkerkerweg 59-61, 1185 XB Amstelveen, The Netherlands

CANON INC.

30-2, Shimomaruko 3-chome, Ohta-ku, Tokyo 146-8501, Japan