

X58 Extreme6

Intel® X58+ ICH10R Chipsets

ASRock
www.asrock.com



Product Brief

- ASRock DuraCap (2.5 x longer life time), 100% Japan-made high-quality Conductive Polymer Capacitors
- Six-Core CPU Ready
- Supports Triple Channel DDR3 2000(OC)
- Supports ATI™ Quad CrossFireX™, 3-Way CrossFireX™ and CrossFireX™
- Supports NVIDIA® Quad SLI™, 3-Way SLI™ and SLI™
- 2 x Front USB 3.0 ports, 4 x Rear USB 3.0 ports, 6 x SATA3 6.0 Gb/s connectors, 2 x IEEE1394 ports
- Dr. Debug, Smart Switch Design: Power/Reset/Clear CMOS Switch with LED
- Supports ASRock Instant Boot, Instant Flash, OC Tuner, IES, OC DNA, Good Night LED, Multi-Speed Fan Control, AIWI, APP Charger
- Combo Cooler Option (C.C.O.)
- 7.1 CH HD Audio with Content Protection (Realtek ALC892 Audio Codec), THX TruStudio PRO™ and Premium Blu-ray audio support
- Free Software : CyberLink DVD Suite - OEM and Trial
- Free Bundle: 1 x Front USB 3.0 Panel, 1 x ASRock SLI_Bridge_2S Card, 1 x ASRock 3-Way SLI-2S2S Bridge Card
- ErP / EuP 2.0 Ready

The specification is subject to change without notice. The brand and product names are trademarks of their respective companies. Any configuration other than original product specification is not guaranteed.

Detail Specification

Platform	- ATX Form Factor: 12.0-in x 9.6-in, 30.5 cm x 24.4 cm - All Solid Capacitor design (100% Japan-made high-quality Conductive Polymer Capacitors)
CPU	- Intel® Socket 1366 Core™ i7 Processor Extreme Edition / Core™ i7 Processor - Supports Intel® Dynamic Speed Technology - Six-Core CPU Ready - System Bus up to 6400 MT/s; Intel® QuickPath Interconnect - Advanced V8 + 2 Power Phase Design - Supports Hyper-Threading Technology - Supports Unified Overclocking Technology - Supports EM64T CPU
Chipset	- Northbridge: Intel® X58 - Southbridge: Intel® ICH10R
Memory	- Dual Channel DDR3 memory technology - 6 x DDR3 DIMM slots - Supports DDR3 2000(OC)/1866(OC)/1600(OC)/1333(OC)/1066 non-ECC, un-buffered memory - Supports DDR3 ECC, un-buffered memory with Intel® Workstation 1S Xeon® processors 3500 series - Max. capacity of system memory: 24GB - Supports Intel® Extreme Memory Profile (XMP)
Expansion Slot	- 3 x PCI Express 2.0 x16 slots (PCI-E1: x16 mode; PCIE4/PCIE5: single at x16 or dual at x8/x8 mode) - (Double-wide slot spacing between each PCI-E slot) - 2 x PCI Express x1 slots - 2 x PCI slots - Supports ATI™ Quad CrossFireX™, 3-Way CrossFireX™ and CrossFireX™ - Supports NVIDIA® Quad SLI™, 3-Way SLI™ and SLI™
Audio	- 7.1 CH HD Audio with Content Protection (Realtek ALC892 Audio Codec) - Premium Blu-ray audio support - Supports THX TruStudio PRO™
LAN	- PCI-E x1 Gigabit LAN 10/100/1000 Mb/s - Realtek RTL8111E - Supports Wake-On-LAN - Supports LAN Cable Detection - Supports Energy Efficient Ethernet 802.3az
Rear Panel I/O	I/O Panel - 1 x PS/2 Mouse Port - 1 x PS/2 Keyboard Port - 1 x Coaxial SPDIF Out Port - 1 x Optical SPDIF Out Port - 4 x Ready-to-Use USB 2.0 Ports - 4 x Ready-to-Use USB 3.0 Ports - 1 x eSATA3 Connector - 4 x RJ45 LAN Port with LED (ACT/LINK LED and SPEED LED) - 1 x IEEE 1394 Port - 1 x Clear CMOS Switch with LED - HD Audio Jack: Side Speaker / Rear Speaker / Central / Bass / Line in / Front Speaker / Microphone
SATA3	- 2 x SATA3 6.0 Gb/s connectors by Marvell SE9128, support RAID (RAID 0, RAID 1 and JBOD), NCQ, AHCI and "Hot Plug" functions - 4 x SATA3 6.0 Gb/s connectors by Marvell SE9123/9120, support NCQ, AHCI and "Hot Plug" functions - (SATA3_6 connector is shared with eSATA3 port)
USB 3.0	- 4 x Rear USB 3.0 ports by NEC UPD720200, support USB 1.0/2.0/3.0 up to 5Gb/s - 1 x Front USB 3.0 header (supports 2 USB 3.0 ports) by NEC UPD720200, supports USB 1.0/2.0/3.0 up to 5Gb/s
Connector	- 6 x SATA3 3.0 Gb/s connectors, support RAID (RAID 0, RAID 1, RAID 10, RAID 5 and Intel® Matrix Storage), NCQ, AHCI and Hot Plug functions - 6 x SATA3 6.0 Gb/s connectors - 1 x ATA133 IDE connector (supports 2 x IDE devices) - 1 x Floppy connector - 1 x IR header - 1 x COM port header - 1 x HDMI_SPDIF header - 1 x IEEE 1394 header - 1 x Power LED header - CPU/Chassis/NB/Power FAN connector - 24 pin ATX power connector - 8 pin 12V power connector - SLI/XFire power connector - CD in header - Front panel audio connector - 1 x USB 2.0 header (supports 2 USB 2.0 ports) - 1 x USB 3.0 header (supports 2 USB 3.0 ports) - 1 x Dr. Debug (7-Segment Debug LED)
Smart Switch	- 1 x Power Switch with LED - 1 x Reset Switch with LED - 1 x Clear CMOS Switch with LED
BIOS Feature	- 8Mb AMI Legal BIOS - Supports "Plug and Play" - ACPI 1.1 Compliance Wake Up Events - Supports jumperfree - SMBIOS 2.3.1 Support - CPU, VCCM, IOH, ICH, VTT, IOH/ICH PCIE, CPU PLL, IOH CSI, VCORE Voltage Multi-adjustment - Supports I. O. T. (Intelligent Overclocking Technology)
Support CD	- Drivers, Utilities, AntiVirus Software (Trial Version), ASRock Software Suite (CyberLink DVD Suite - OEM and Trial)
Unique Feature	- ASRock OC Tuner - Intelligent Energy Saver - Instant Boot - ASRock Instant Flash - ASRock OC DNA - ASRock AIWI - ASRock APP Charger - Hybrid Booster: - CPU Frequency Stepless Control - ASRock U-COP - Boot Failure Guard (B.F.G.) - Combo Cooler Option (C.C.O.) - Good Night LED
Hardware Monitor	- CPU Temperature Sensing - Chassis Temperature Sensing - CPU/Chassis/NB/Power Fan Tachometer - CPU Quiet Fan - CPU/Chassis Fan Multi-Speed Control - Voltage Monitoring: +12V, +5V, +3.3V, CPU Vcore
OS	- Microsoft® Windows® 7 / 7 64-bit / Vista™ / Vista™ 64-bit / XP / XP 64-bit compliant
Certifications	- FCC, CE, WHQL - ErP/EuP 2.0 Ready (ErP/EuP 2.0 ready power supply is required)
Accessories	- 1 x ASRock SLI_Bridge_2S Card - 1 x ASRock 3-Way SLI-2S2S Bridge Card - Quick Installation Guide, Support CD, I/O Shield - Floppy/ATA 133 Cables - 6 x SATA Data Cables (Optional) - 3 x SATA 1 to 1 Power Cables (Optional) - 1 x Front USB 3.0 Panel - 6 x Screws

X58 Extreme6

Intel® X58+ ICH10R Chipsets

ASRock®
www.asrock.com

X58 Extreme6

6 Core CPU Support

6 USB 3.0

4 x Rear USB 3.0
+
2 x Front USB 3.0

6 SATA3

Enjoy 6 Gb/s
high transfer speed now!

Supports the Core i7
980X 6-Core CPU



Heatpipe design for
CPU power Mosfet



Supports ATI™ Quad CrossFireX™,
3-Way CrossFireX™ and CrossFireX™
Supports NVIDIA® Quad SLI™,
3-Way SLI™ and SLI™



X58 Extreme6

Intel® X58+ ICH10R Chipsets

ASRock®
www.asrock.com



ASRock AIWI software introduces a new way of PC gaming operation. ASRock AIWI is the world's first software to turn your iPhone/iPod touch as a game joystick to control your PC games. Just to install the ASRock AIWI software on your ASRock motherboard, connect your PC and apple devices via Bluetooth or WiFi networks, then you can start experiencing the exciting motion controlled games.



ASRock AIWI Quick Start Guide

Step 1.

Download and install the ASRock AIWI PC software on ASRock PC:



Step 2.

Free download AIWI-Lite from App Store and install to your iPhone / iPod Touch:



Step 3.

Connect your iPhone / iPod touch with ASRock PC via WiFi or bluetooth.



Step 4.

Execute ASRock AIWI software on the PC and log in to register to become a new AIWI member, then you can receive continues new games update.



X58 Extreme6

Intel® X58+ ICH10R Chipsets

ASRock®
www.asrock.com

THX TruStudio PRO™

THX TruStudio PRO™ is specially designed to bring the same great audio experience found in live performances, films, and recording studios - to the PC. THX TruStudio PRO™ provides the latest groundbreaking technologies that are products of years of collective experience. These technologies deliver the fullest audio experience for music, movies and games, while remaining true to the source and intention of the artists who created it

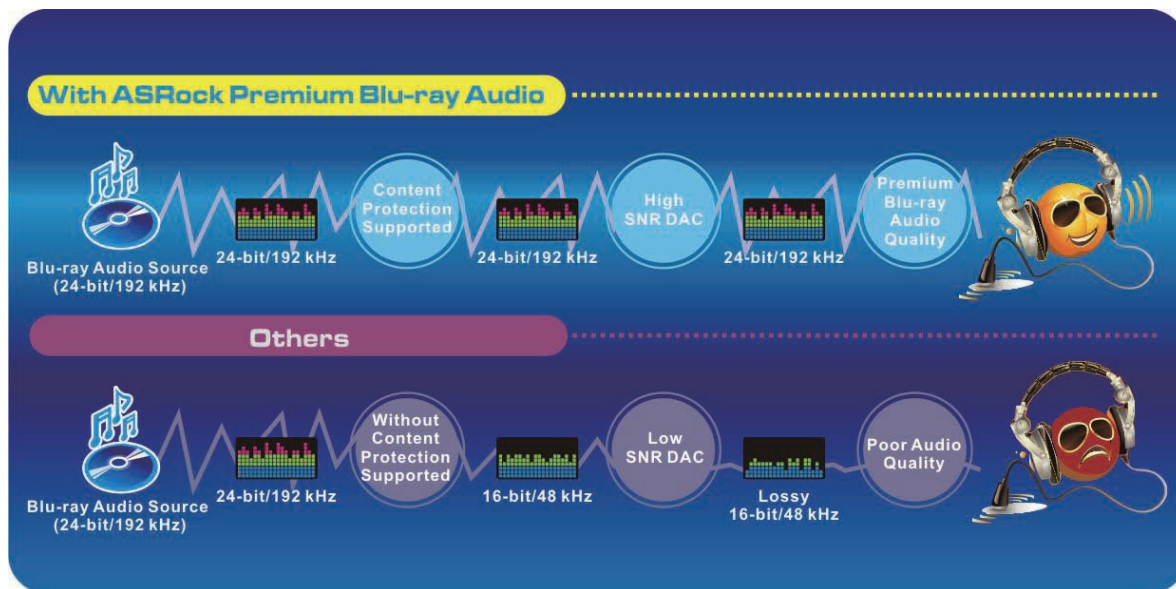
THX
TruStudio PRO™

Premium Blu-ray Audio



Premium Blu-ray Audio, an outstanding technology developed on ASRock motherboard, provides the excellent audio output of 24-bit/192 kHz with its respective Blu-ray DRM compatible driver/software. With Content Protection-Support and High SNR DAC, the Blu-ray entertainments can be played in a high quality of 24-bit/192kHz. In other words, if you are using a device without the Blu-ray Audio support, the audio quality will be downgraded to 16-bit/48kHz like a regular CD quality. To deliver the best possible sound solution for today's most demanding users, ASRock Premium Blu-ray Audio motherboard is the best choice for users who are particularly desired to enjoy the pure HD audio. ASRock users are able to take full advantages of our Blu-ray Audio motherboards. Choose ASRock, choose Pure HD audio!

Why ASRock?



* SNR: Signal-to-Noise Ratio.

X58 Extreme6

Intel® X58+ ICH10R Chipsets

ASRock®
www.asrock.com



C.C.O.

Combo Cooler Option

C.C.O. provides the flexible option to adopt two different CPU cooler types, Socket LGA 775* and LGA 1366**.

*C.C.O. may not be compatible with all Socket 775 CPU coolers.

**O is for Socket LGA 1366 CPU cooler.

Smart Switch Design



Clear CMOS Switch



Power Switch



Reset Switch



The Power and Keyboard LED will be automatically switched off when the system is under Standby / Hibernation mode.



Dr. Debug



Dr. Debug helps you to diagnose the BIOS POST status of your system.

X58 Extreme6

Intel® X58+ ICH10R Chipsets

ASRock®
www.asrock.com



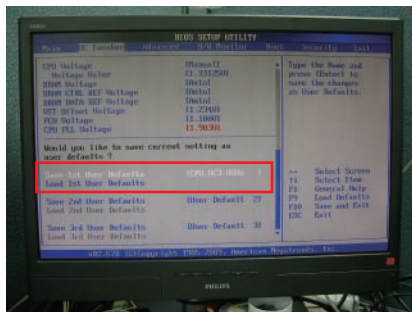
OC DNA

Save your OC settings as a profile and share with friends. Try OC DNA now!

OC DNA Instruction

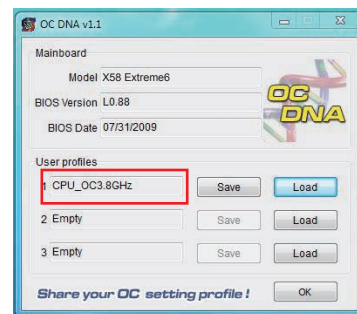
Step 1

Save your BIOS OC settings as User Default in BIOS OC Tweaker menu. (For example: we name this User Default setting as "CPU_OC3.8GHz")



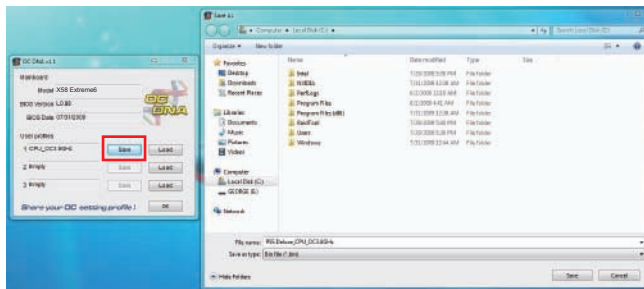
Step 2

Execute ASRock OC DNA under OS, you will find "CPU_OC3.8GHz" as User Profile 1.



Step 3

Press "Save" button to save the "CPU_OC3.8GHz" OC settings as a profile.



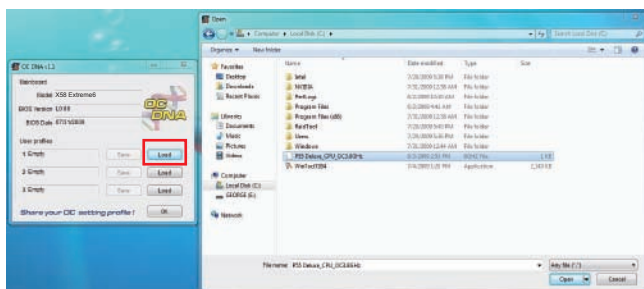
Step 4

Send the "CPU_OC3.8GHz" profile to other friends.



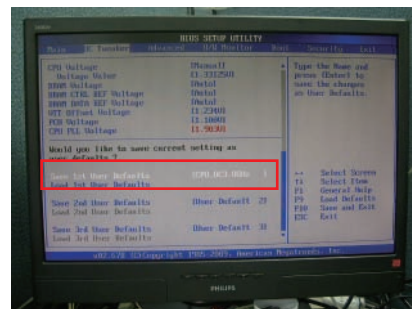
Step 5

When the friend receives your "CPU_OC3.8GHz" profile, he can press "Load" to load the "CPU_OC3.8GHz" profile in OC DNA.



Step 6

After that, the friend can enter into BIOS OC Tweaker menu to load the "CPU_OC3.8GHz" profile as his BIOS OC settings.



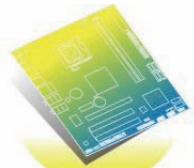
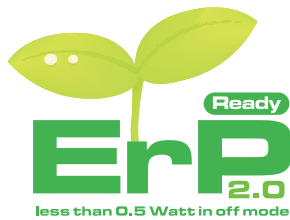
Now, you have successfully share your OC setting profile with your friends.

*The OC DNA works only when users use the same motherboard and BIOS version.

X58 Extreme6

Intel® X58+ ICH10R Chipsets

ASRock®
www.asrock.com



ErP/EuP Ready Motherboard



ErP/EuP Ready Power Supply



ErP/EuP System

What is ErP/EuP 2.0?

ErP / EuP, stands for Energy Using Product, was a provision regulated by European Union to define the power consumption for the completed system. According to ErP / EuP, the total AC power of the completed system shall be under 1.00W in off mode condition. To meet ErP / EuP standard, the ErP / EuP ready motherboard and the ErP / EuP ready power supply are required. (The ErP / EuP ready power supply must meet the standard of 5v standby power efficiency is higher than 50% under 100 mA current consumption.).

Compared with ErP / EuP, ErP / EuP 2.0 is stricter. Based on ErP / EuP 2.0 standard, the total AC power consumption of the completed system shall be under 0.5W in off mode in 2013.

ASRock Instant Boot



ASRock Instant Boot is a new feature invented exclusively by ASRock. It can boot up system in an amazing speed, which is 10 times faster than traditional boot up. For home users or office PC users, ASRock Instant Boot can also guarantee a clean Windows OS, and consumed less power! For details: <http://www.asrock.com/feature/InstantBoot/index.asp>

* This function is applicable ONLY to single user that does not secure ID and Password to their systems.

* The boot up time depends on the hardware configuration.

10 Times Faster, Only 4 Secs to Boot Up to Windows!

ASRock YouTube

<http://tw.youtube.com/watch?v=BucIjXZVxXo>



ASRock Instant Flash

ASRock Instant Flash is an exclusive and the most user-friendly BIOS flash utility developed by ASRock. It is embedded in Flash ROM which is used to update the system BIOS without having to enter operating systems like MS-DOS or Windows.



Features

Once executing ASRock Instant Flash, the utility will automatically detect all devices such as USB, hard disk or even floppy drive to find the exact BIOS for your system. Instead of giving you all BIOS in your devices, the Instant Flash just list BIOS versions that apply to your motherboard model only. For example, if you have many different BIOS of different motherboards saved in your devices, but you just need to flash your P45 motherboard, the Instant Flash will just list the P45 BIOS versions for you. This unique function allows you to easily select the suitable BIOS version instead of browsing through all data.



Instant Flash just list BIOS versions that apply to your motherboard model.

Simple!



Click and start Flashing!

Quick!

X58 Extreme6

Intel® X58+ ICH10R Chipsets

ASRock®
www.asrock.com



CyberLink

CyberLink Power2Go 6.1 LE OEM

Power2Go 6 lets you burn and backup videos, photos, music and data onto Blu-ray Discs and DVDs.

CyberLink MediaShow 4.1 SE OEM

Photo and video management software MediaShow edits videos and photos instantly, creates slideshow, and allows publishing directly to YouTube and Flickr.

CyberLink PowerDVD 8.0 DTS Trial

World-renowned PowerDVD 8 DTS delivers outstanding DVD movie playback quality on your PC.

CyberLink PowerDirector 8.0 Trial

PowerDirector - Video Editing software – edits high-definition videos including AVCHD, allows output to PSP iPod and Blu-ray Disc.

CyberLink PowerBackup 2.5 Trial

PowerBackup backups valuable data on your PC.