



Bluetooth Mouse User Guide

Model: BT-630

www.a4tech.com

THIS DEVICE COMPLIES WITH PART 15 OF THE FCC RULES. OPERATION IS SUBJECT TO THE FOLLOWING TWO CONDITIONS: (1) THIS DEVICE MAY NOT CAUSE HARMFUL INTERFERENCE AND (2) THIS DEVICE MUST ACCEPT ANY INTERFERENCE RECEIVED, INCLUDING INTERFERENCE THAT MAY CAUSE UNDESIRABLE OPERATION.

Federal Communications Commission Requirements

The equipment has been tested and found to comply with the limits for Class B Digital Device, pursuant to part 15 of the FCC Rules. These limits are designed to provide reasonable protection against harmful interference in a residential installation. This equipment generates uses and can radiate radio frequency energy and, if not installed and used in accordance with the instruction, may cause harmful interference to radio communication. However, there is no guarantee that interference will not occur in a particular installation. If this equipment does cause harmful interference to radio or television reception, which can be determined by turning the equipment off and on, the user is encouraged to try to correct the interference by one or more of the following measures:

- Reorient or relocate the receiving antenna.
- Increase the separation between the equipment and receiver.
- Connect the equipment into an outlet on a circuit different from that to which the receiver is connected.
- Consult the dealer or an experienced radio/TV technician for help.

THE CHANGES OR MODIFICATIONS NOT EXPRESSLY APPROVED BY THE PARTY

RESPONSIBLE FOR COMPLIANCE COULD VOID THE USER'S AUTHORITY TO OPERATE THE EQUIPMENT.

This device complies with Part 15 of the FCC Rules. Operation is subject to the following two conditions:

- (1) This device may not cause harmful interference, and*
- (2) This device must accept any interference received, including interference that may cause undesired operation.*

FCC Radiation Exposure Statement

The equipment complies with FCC radiation exposure limits set forth for uncontrolled equipment and meets the FCC radio frequency (RF) Exposure Guidelines in Supplement C to OET65. The equipment has very low levels of RF energy that it is deemed to comply without testing of specific absorption ratio (SAR).

Package Contents

- 1. Bluetooth Mouse*
- 2. 1*AA Battery*
- 3. Quick Set Up Guide*
- 4. CD (CD User Manual)*

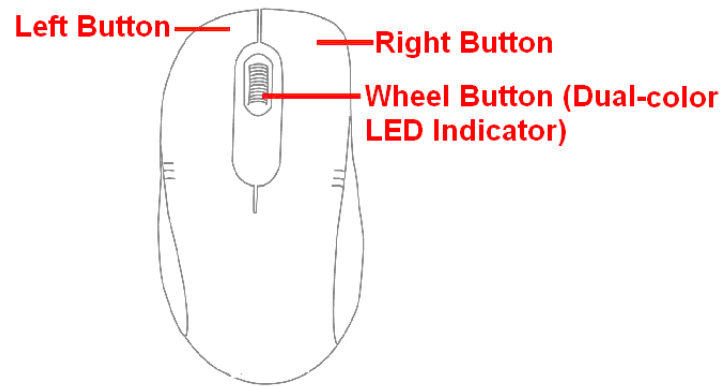
Features

- 1. Bluetooth V2.0, 10 meter range*

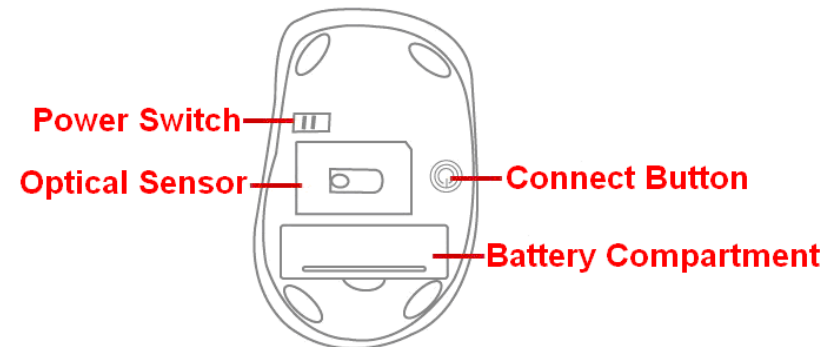
-
2. 1000DPI
 3. Four stages power saving mode, low battery warning
 4. 8 in Right software, innovative 4D wheel

System Requirement: Windows XP/ Vista / Windows 7

Know your product



Front View



Back View

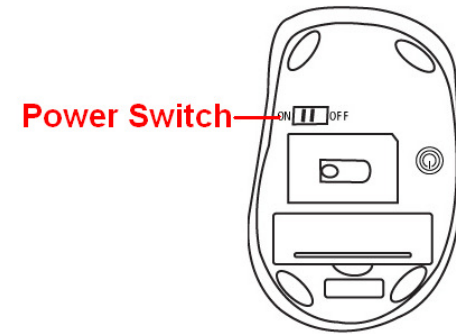
Dual-color LED Indicator

Bluetooth Mouse	LED Status
Power On	Green LED: Turn off after 1 Second
Low Battery Warning	Red LED: Blinking
Connection Start	Alternate Blink Between Red and Green
Connection Complete	Stop Blinking

Turn On/Off Mouse

1. Slide on the power switch to immediately turn on the mouse.

2. To turn off the mouse, just slide off the power switch and then LED light is off immediately.



Battery Installation

Open battery cover and insert the supplied AA battery. Please make sure that the positive (+) and negative (-) ends of the battery match the polarity indicators inside the battery compartment.

Power Saving Management

Four stages power saving mode provide the best power saving management. In Deep Sleep, the mouse can be activated by clicking any mouse buttons. In other sleep statuses, just move the mouse to activate it.

Status	Time elapses to enter the mode	Power Consumption	Way to wake up
Stand-by	0 second	20mA	Moving
Slight Sleep	2 seconds	10mA	Moving
Middle Sleep	4 seconds	1.7mA	Moving
Deep Sleep	5 minutes	0.3mA	Clicking

Note: The mouse will enter Deep Sleep ten seconds after turning off PC. To wake it up, turn on PC and click any mouse button.

Configuration

Our Bluetooth Mouse is designed to work with Five major software standards: Microsoft, Broadcom, IVT, Toshiba, Apple. Please select the corresponding connection way according to your software standard.

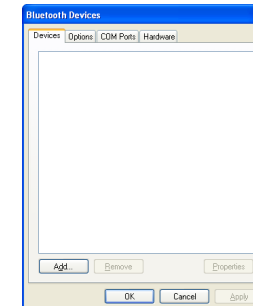
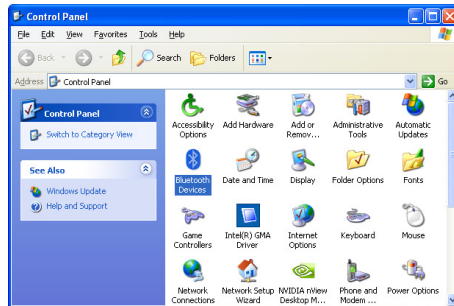
Bluetooth Software Vendor	Bluetooth Software Name	Bluetooth Device Not Inserted	Bluetooth Device Already Inserted	Bluetooth Device In Working	Support Version
Microsoft	Windows Bluetooth				Windows XP(SP2) Above
Broadcom	Widcomm				V4.0 Above
IVT	BlueSoleil				V5.0 Above
Toshiba	Bluetooth Stack				V3.0 Above
Apple	Mac OS X Bluetooth				Mac OS X 10.4~10.5 Above

Note : Before start Bluetooth Mouse connectivity, please check whether your system has already installed Bluetooth software and whether it works.

Bluetooth Software: MICROSOFT

Step 1: Click Start, click Control Panel (make sure you're in Classic View), and then double-click Bluetooth Devices.

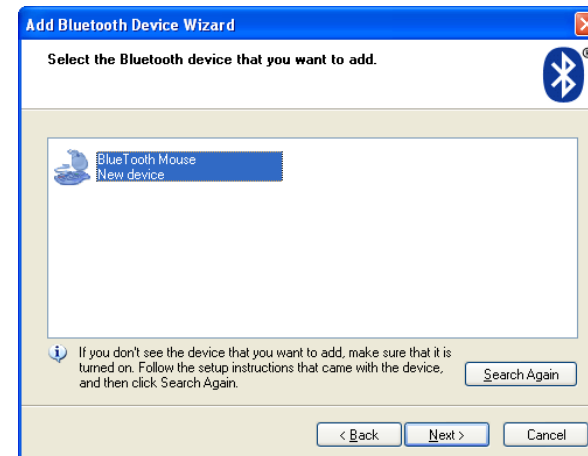
Step 2 : In popped Bluetooth Devices window, Click Add.



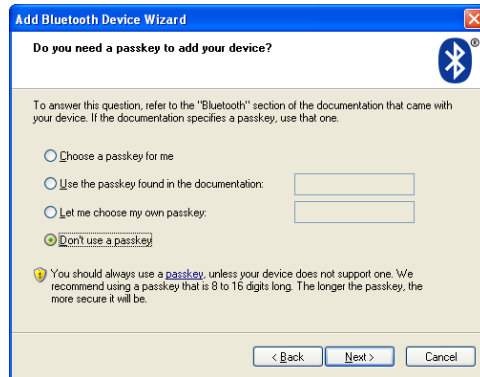
Step 3 : Turn on the mouse and press the connection button at the bottom of mouse until the LED Indicator in the middle wheel blinks alternately in Red and Green. In the **Add Bluetooth Device Wizard**, select the **My device is set up and ready to be found** check box, and then click **Next**.



Step 4: After the device names appear, click **Bluetooth Mouse**, and then click **Next**.



Step 5 : When the wizard asks to specify a passkey, click **Don't use a passkey**, and then click **Next**.

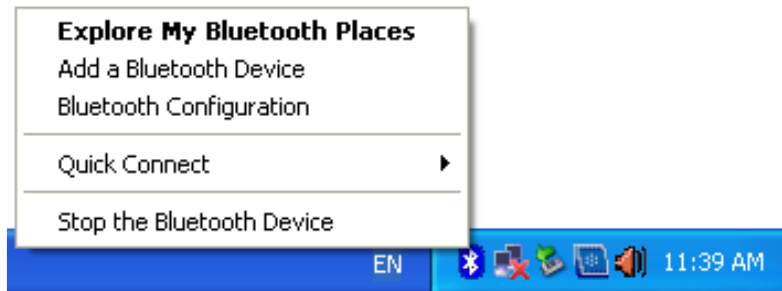


Step 6 : Please wait while the wizard completes the process of adding your Bluetooth mouse. In the final page of the wizard, click **Finish**, and then click **OK**. The LED Indicator in the middle wheel stops blinking.



Bluetooth Software: WIDCOMM

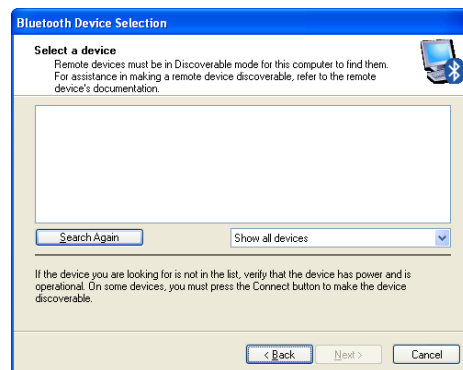
Step 1: Right click on Bluetooth icon located at system tray, then select Add a Bluetooth Device.



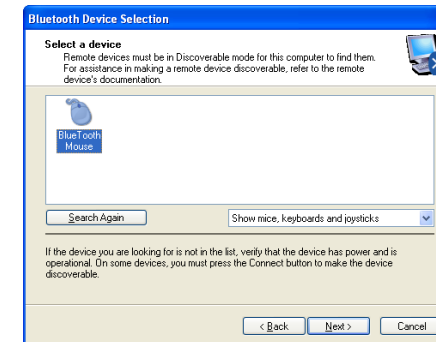
Step 2 : In popped Initial Bluetooth Configuration Wizard, Click Next.



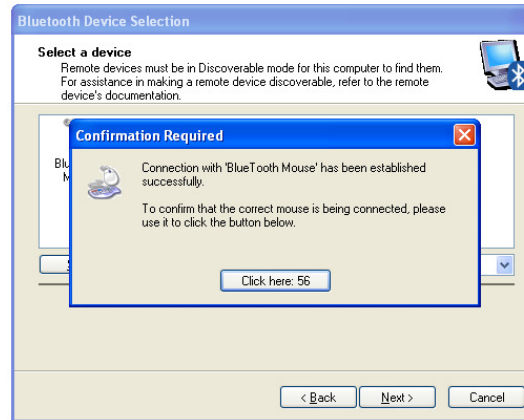
Step 3 : Turn on the mouse and press the connection button at the bottom of mouse until the LED Indicator in the middle wheel blinks alternately in Red and Green. In Bluetooth Devices Selection, it will automatically detects discoverable bluetooth devices.




Step 4: After the device names appear, click BlueTooth Mouse, and then click Next.



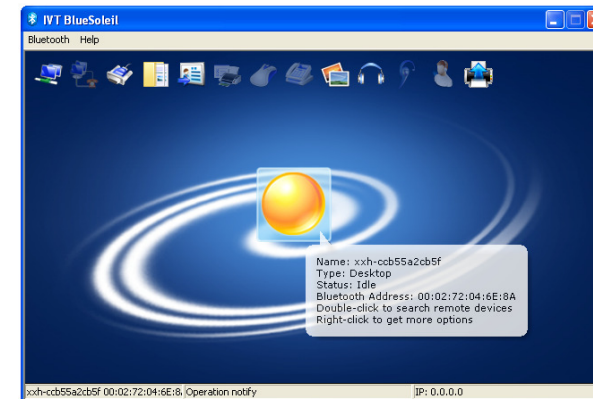
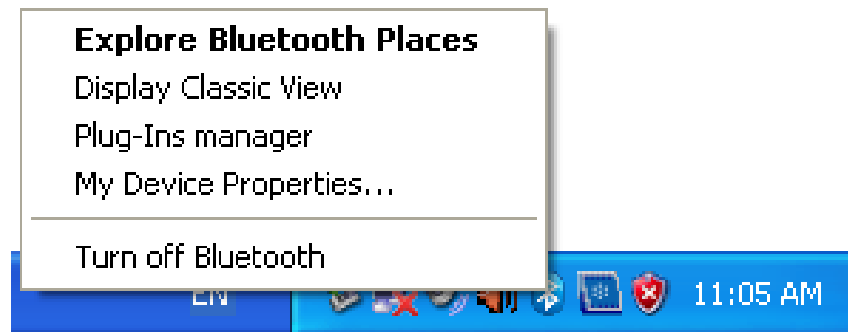
Step 5 : Please wait while the wizard completes the process of adding your Bluetooth mouse. In the final page of the wizard, click **Click here**. The LED Indicator in the middle wheel stops blinking, the Bluetooth mouse has successfully installed.



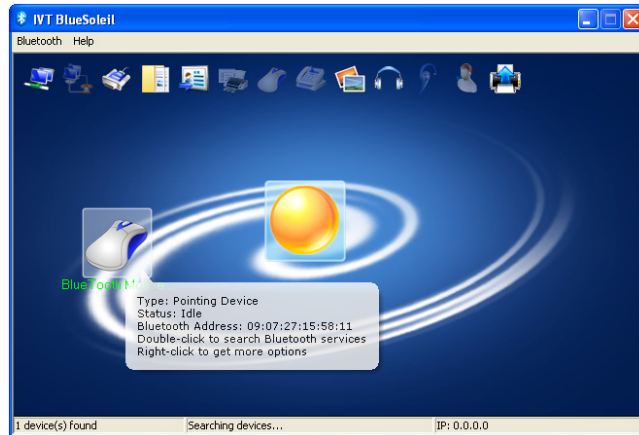
Bluetooth Software: BLUESOLEIL

Step 1: Right click on Bluetooth icon  located at system tray, then select **Add a Display Classic View**.

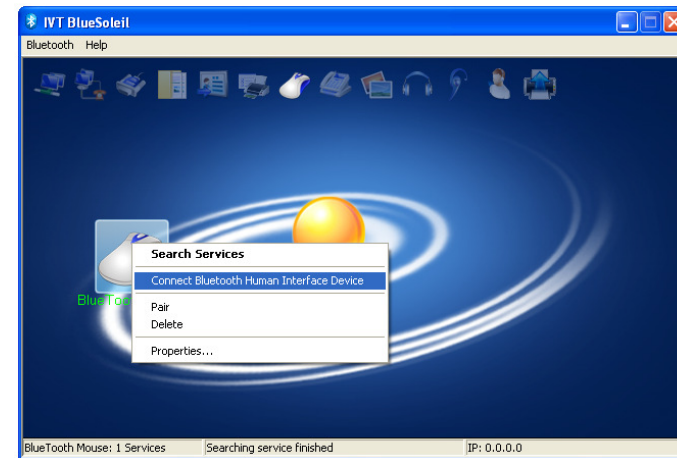
Step 2 : Double click orange circle button to start searching Bluetooth devices.



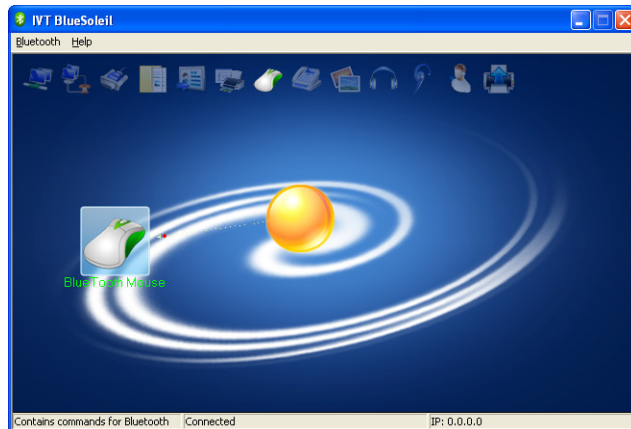
Step 3 : Turn on the mouse and press the connection button at the bottom of mouse until the LED Indicator in the middle wheel blinks alternately in Red and Green. The mouse icon will display after searching Bluetooth devices successfully.




Step 4 : Right click on the mouse icon and select **Connect Bluetooth Human Interface Device**.

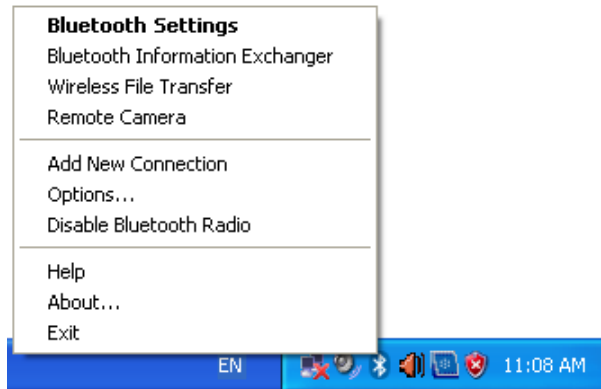


Step 5 : The Bluetooth mouse will automatically complete the connection. The bluetooth mouse has successfully installed while the LED Indicator in the middle wheel stops blinking.



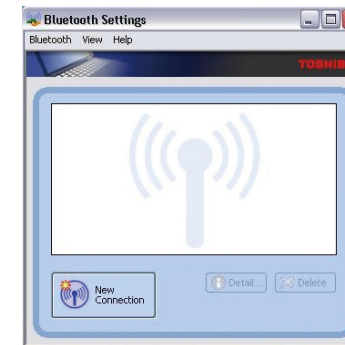
Bluetooth Software: Bluetooth Stack

Step 1: Right click on Bluetooth icon  located at system tray, then select **Add New Connection.**

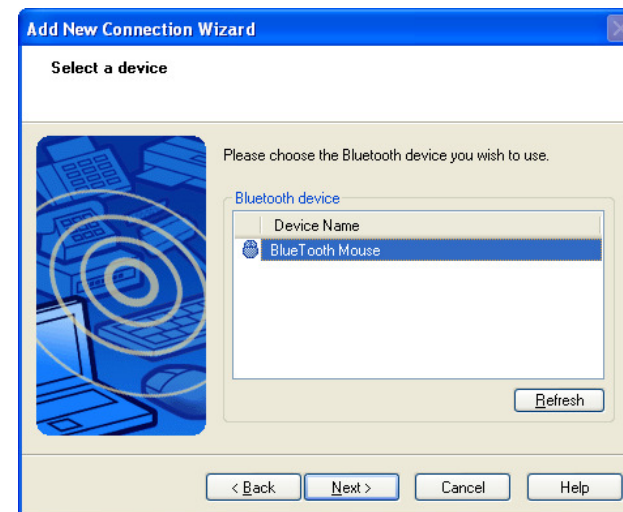


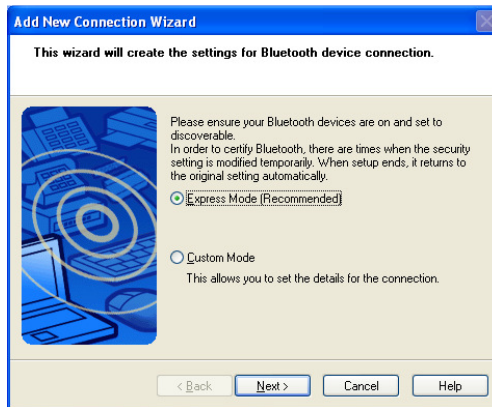
Step 3 : Turn on the mouse and press the connection button at the bottom of mouse until the LED Indicator in the middle wheel blinks alternately in Red and Green. In **Add New Connection Wizard**, click **Express Mode**, and then click **Next** to search Bluetooth devices.

Step 2 : In popped **Bluetooth Settings**, Click **New Connection.**



Step 4 : Please wait until the device names appear, click **BlueTooth Mouse**, and then click **Next**.






Step 5 : Please wait while the wizard completes the process of adding your Bluetooth mouse. The mouse doesn't require Passkey(PIN code).

Step 6 : The LED Indicator in the middle wheel stops blinking after the mouse has successfully installed.



Bluetooth Software: Mac OS X Bluetooth

Step 1: Right click on Bluetooth icon  located at system tray, then select **Set up Bluetooth Device**.

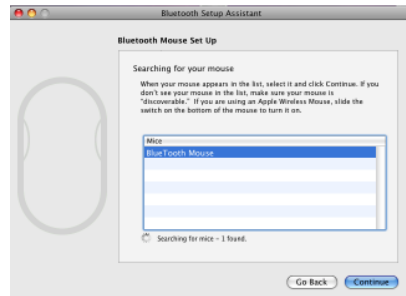


Step 2 : Follow on-screen instructions to continue setup. Select **Mouse** when below window appears.





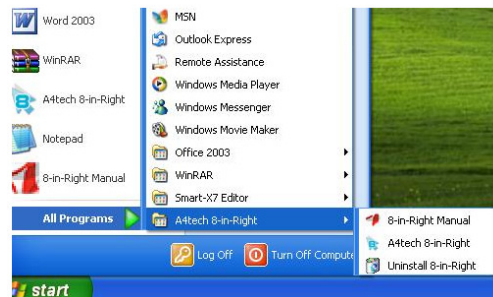
Step 3 : Turn on the mouse and press the connection button at the bottom of mouse until the LED Indicator in the middle wheel blinks alternately in Red and Green. After device names appear, click **BlueTooth Mouse**, and then click **Next**.

Step 4 : The bluetooth mouse has successfully installed while the LED Indicator in the middle wheel stops blinking. You can choose to set up another device or click **Quit** to exit.



Software Installation

1. Before installing the mouse software, please uninstall any previously installed mouse software.
2. Insert enclosed CD to start installation.
3. Follow on-screen instructions to complete the installation.
4. The icon  will appear on your desktop, then you have successfully installed the software.
5. To launch the software, double click the icon  on your desktop or go to Start—Programs—A4tech 8 in Right, then the icon will appear in the taskbar at the right corner of your screen.



.For more completed instructions on how to set up this software, please refer to software manual in CD.

*** Features and specifications of all A4 TECH products are subject to change without notification.*