

56K INTERNAL  

---

MODEM CARDS  
**INSTALLATION GUIDE**

P/N:PMICA00001-51

# 1 Installing Your Modem in Windows 95/98

Step1.

Reboot the computer system after modem is correctly plugged into your PCI slot of computer. The Windows 95/98 will automatically detect your new modem and promote you the following dialog box to install new driver for the modem. Click on the “**Next**” button to continue.



Step 2.

In the new dialog box, you have two choices to install a driver. The default choice is search for the best driver for your device. Highlight this selection if it is not already highlighted and click on “**NEXT**”.



Step 3.

A new Add New Hardware Wizard dialog box will display on the screen. Insert the driver CD into the CD-ROM drive and highlight the “Specify a location” and choose the “F:\driver\Win9x”, then click on “**NEXT**” button .



Step4.

The below dialog box to show you the INF. file, Windows 95/98 has found the modem. Click on the “**Next**” button to accept the INF. File. Then Windows 95/98 will starts to copy all files from CD-ROM to your PC hard disk.



Step5.

Windows 95/98 will display dialog box to tell you it has already installed the driver for the modem. Click on “**Finish**” button to confirm the installation of the modem.



Step6.

After finishing the installation of modem, the Windows 95/98 will display dialog box to ask you providing the driver for the **Wave Device for Voice Modem**. Then click on “**Next**” button to continue.

Step7.

Please follow the above procedure from step1 to step5 to install the driver. The Windows 95/98 will show you all the installation. Just only click on the “**NEXT**” button to run all the procedure. Then the Windows 95/98 will start to copy all files from CD-ROM to your PC hard disk.

Step8.

The Windows 95/98 will display dialog box to tell you it has already installed the driver for the wave device for voice modem. Click on “**Finish**” button to confirm the installation.

## 2 Installing Your Modem in Windows ME

### Step1.

Turn on your computer. As Windows ME operating system boots up, it displays Add New Hardware Wizard dialog box shown on your screen for a few seconds with the identifier name (PCI Communication Device) of your modem. Click "**NEXT**", then a new dialog box will show on the screen.

### Step2.

In the new dialog box, you have two choices to install a driver. The default choice is to search the best driver for your device. Highlight this selection if it is not already highlighted and click on "**NEXT**" button.



### Step3.

A new Add New Hardware Wizard dialog box will display on the screen. Insert the driver CD into the CD-ROM device and highlight the "Specify a location" and choice the "F:\driver\WinME". Windows ME will copy the files into your hard disk.



Step4.

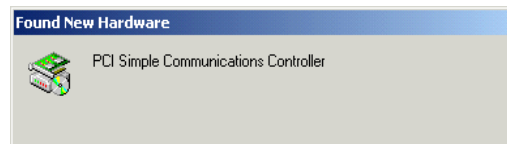
Windows ME will display dialog box to tell you it has already installed the driver for the modem. Click on “**Finish**” button to confirm the installation completed.



### 3 Installing Your Modem in Windows 2000

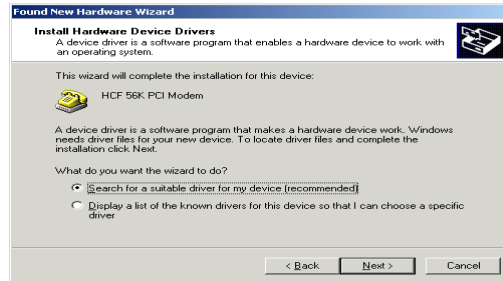
Step1.

Turn on your computer. As Windows 2000 operating system boots up, it displays a Found New Hardware Wizard dialog box shown on your screen.



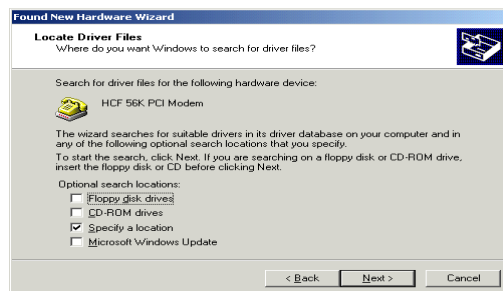
Step2.

In the new dialog box, you have two choices to install a driver. The default choice is to search the best driver for your device. Highlight this selection if it is not already highlighted and click on “**NEXT**” button to continue.



Step3.

In the new dialog box you have four choices to search the driver files. The default choice is to select “Specify a location” then click on “Next” button to continue.



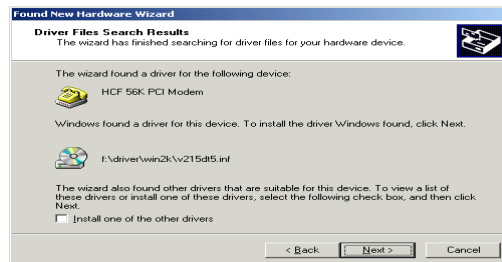
Step4.

Insert the CD to your CD-ROM device, then choose the 'F:\Driver\Win2K' and click on “OK” to continue the installation.



Step5.

In the new dialog box Window 2000 has found the driver and will copy the driver files from CD-ROM to your PC hard disk. Please click on “**Next**” button to continue.



Step6.

After finishing the process, Window 2000 will ask you to confirm the installation and click on “**Finish**” to close the wizard.

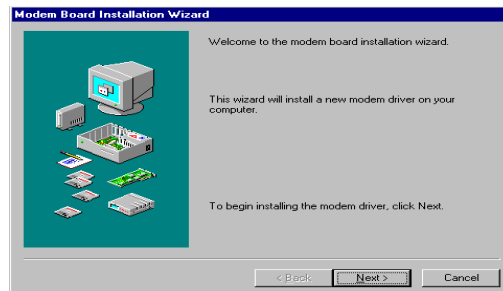


## 4 Installing Your Modem in Windows NT4.0

Step1.

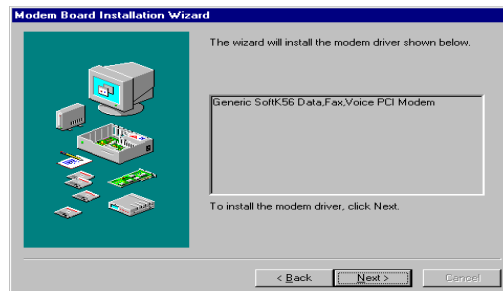
As the Windows NT4.0 operating system boots up, it displays a New Hardware Wizard dialog box and ask you to click “**NEXT**” to run the installation.





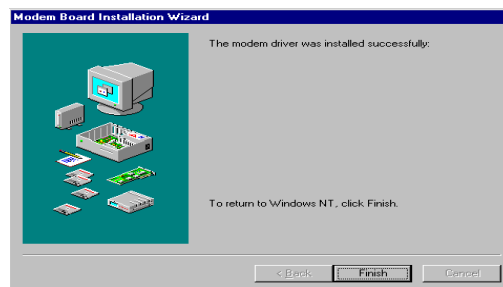
### Step2.

Windows NT4.0 operating system will show the definite name of your modem. Then click on “**NEXT**” to install modem driver.



### Step3.

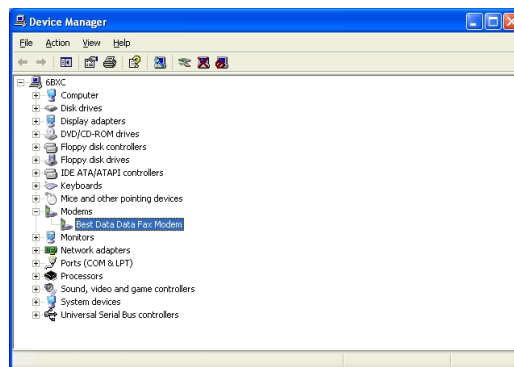
After finishing the installation, Windows NT4.0 operating system will display the dialog box to confirm you that all process has already completed. Then click on “**Finish**” to complete the installation.



## 5 Installing Your Modem in Windows XP

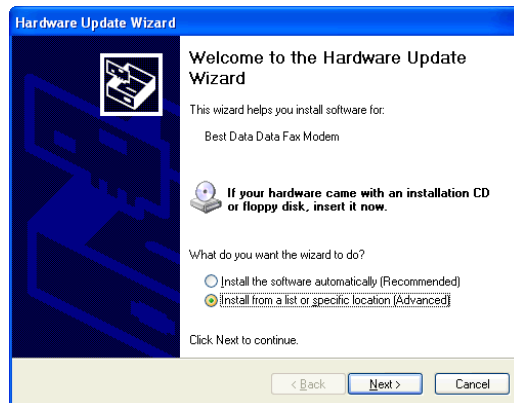
Step1.

As the Windows XP operating system boots up, right click the “my computer” icon then select “properties”. When “System Properties” dialog box shows up, choose “Hardware” then click “Device Manager”. In the list of devices, double click “Modems”.



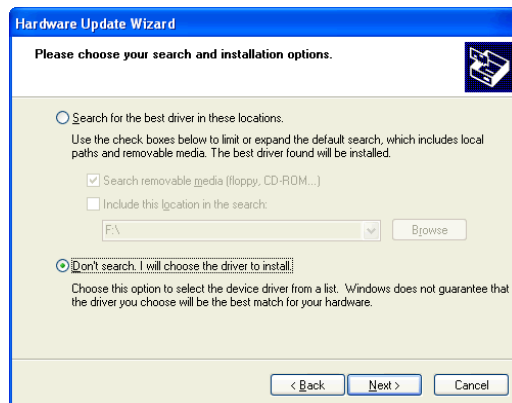
Step2.

Right click “Best Data Data Fax Modem” then choose “Update Driver” and a new dialog box “Hardware Update Wizard” appears. Select “Install from a list or specific location [Advanced]” then click “Next” button.



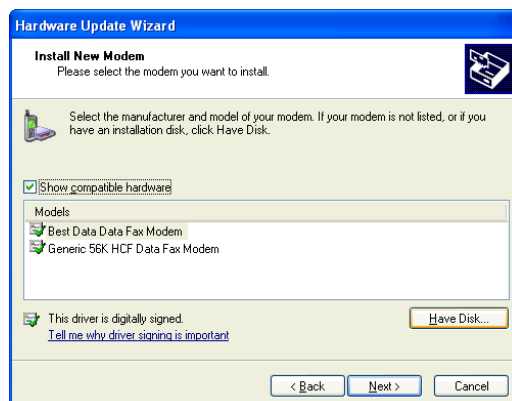
Step3.

Select “Don’t search. I will choose the driver to install.” Click “Next” button.



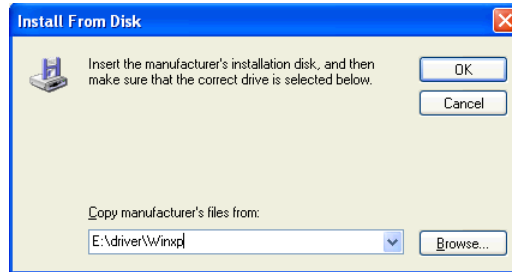
Step4.

Click “Have Disk...” to find the driver for Modem.



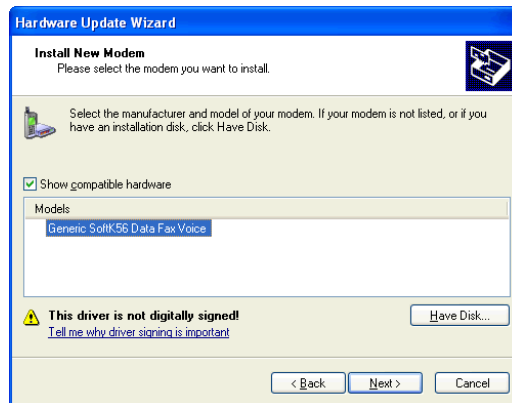
Step5.

In the dialog box of “Install From Disk”, insert the CD to your CD-ROM device then choose “E:\driver\Winxp”. Click “OK” button.



Step6.

In the new dialog box Windows XP has found the driver and will copy the driver files from CD-ROM to your PC hard disk. Choose “Generic SoftK56 Data Fax Voice” then click “Next” button.



Step7.

After finishing the process, Windows XP will ask you to confirm the installation and click on “Finish” to close the wizard.

