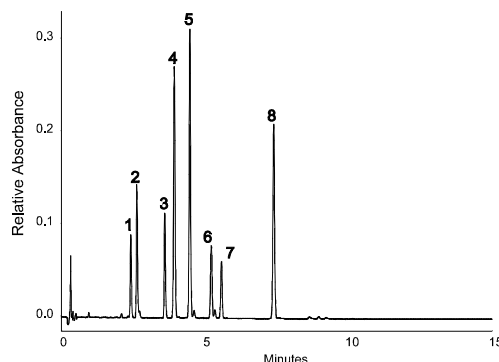


# USE OF SHORT, SMALL-PARTICLE COLUMNS FOR FAST AND EFFICIENT SEPARATIONS HERBICIDE MIXTURE

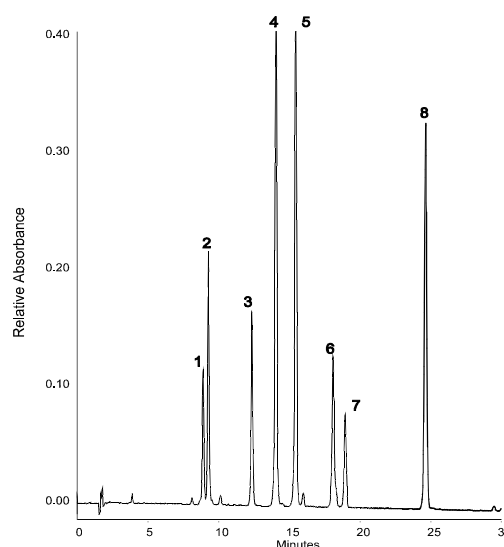
**ZORBAX SB-C8**  
**(4.6 x 75 mm) 3.5µm**  
(P/N: 866953.906)

Flow Cell 5mm, 2.5µl  
20-60% B in 10 min  
2 mL/min.



**ZORBAX SB-C8**  
**(4.6 x 150 mm) 5µm**  
(P/N: 883975.906)

Flow Cell 10mm, 8µl  
20-60% B in 30 min.  
1 mL/min.



1. Tebuthiuron
2. Prometon
3. Prometryne
4. Atrazine
5. Bentazon
6. Propanil
7. Propazine
8. Metolachlor

**ZORBAX® SB-C8** Injection 5µl, 35°C, Detect. UV (254 nm)  
Mobile Phase: A: H<sub>2</sub>O to pH 2.0 with TFA; B: ACN

## HIGHLIGHTS

- *High-speed, high-resolution separation of a herbicide mixture in less than 8 minutes.*
- *Smaller particle size (3.5µm) leads to separations of similar efficiency when compared to 5µm particles in columns of twice the length.*
- *Increased flow rate on the 3.5µm, 75 mm column further decreases the run-time. Efficiencies are nearly equivalent to those of the 5µm 150 mm column run at a slower flow rate.*

*Hewlett-Packard Company 5966-2590E*