



System Software Installation Guide

Please read this first.

Thank you for choosing the Yamaha PM1DV2K Software Upgrade Kit.

PM1DV2K is a software package that upgrades the PM1D system software and extends the capabilities of the system by adding a variety of functions in response to numerous user requests.

Please read this installation guide thoroughly before using the software so you can take full advantage of the PM1DV2K for a long period of time.

Special Notices

- The software and this installation guide are the exclusive copyrights of Yamaha Corporation.
- Use of the software and this installation guide is governed by the Software Licensing Agreement which the purchaser fully agrees to upon breaking the seal of the software packaging. (Carefully read the agreement at the end of this installation guide before installing the software.)
- Copying of the software or reproduction of this installation guide in whole or in part by any means is expressly forbidden without the written consent of the manufacturer.
- Copying of the commercially available music sequence data and/or digital audio files is strictly prohibited except for your personal use.
- Yamaha makes no representations or warranties with regard to the use of the software and documentation and cannot be held responsible for the results of the use of this installation guide and the software.
- This disc is a CD-ROM. Do not attempt to play the disc on an audio CD player. Doing so may result in irreparable damage to your audio CD player.
- The screen displays as illustrated in this installation guide are for instructional purposes, and may appear somewhat different from the screens which appear on your computer.
- Future upgrades of application and system software and any changes in specifications and functions will be announced separately.
- Specifications and descriptions in this installation guide are for information purposes only. Yamaha Corp. reserves the right to change or modify specifications at any time without prior notice. Since specifications may not be the same in every locale, please check with your Yamaha dealer.
- The company names and product names in this installation guide are the trademarks or registered trademarks of their respective companies.

Yamaha Professional Audio web site:
<http://www.yamahaproaudio.com/>

Contents

About the Package.....	2
Package Contents	2
Contents of the CD-ROMs.....	2
Contents of Manuals.....	2
Updating the firmware and CS1D screen software	2
Before you use the PM1D system.....	2
System Requirements.....	2
About the version checking function.....	3
System update procedure	4
Updating the firmware (CS1D/DSP1D(-EX)/AI8/AO8/DIO8).....	4
Updating the CS1D screen software	6
Installing the license	7
System Requirements.....	7
Installation Procedure.....	7
Direct installation.....	8
Indirect installation.....	10
Direct De-authorization	11
Indirect De-authorization	12
Error Message List.....	13
Troubleshooting	14
SOFTWARE LICENSE AGREEMENT.....	15

About the Package

Package Contents

The package contains the following items. Please confirm that all items are included before you start using the software.

- One CD-ROM
- Three manuals

Contents of the CD-ROMs

- **Firmware and CS1D screen software updater**

This is an application and data for updating the firmware of each component and the CS1D screen software to V2.

- **Installer (System Software Installer)**

This is an installer for authorizing the software that was updated to V2.

- **PM1D Manager**

PM1D Manager is an application program that provides an environment equivalent to the CS1D on your computer. For details on installing and using PM1D manager, refer to the PM1D Manager owner's manual.

- **Yamaha USB-MIDI Driver**

This driver enables the computer and the CS1D to communicate with each other via their USB ports. This is not used for updating the system software.

See the PM1D Manager Owner's Manual for more information on installing drivers.

- **Owner's Manual (PDF format)**

These provide the same content as the paper manuals, in PDF format.

NOTE: Adobe Reader (available free of charge) must be installed in your computer in order to view the PDF manual. If you don't have Adobe Reader, use the weblink given below to open the Adobe Corporation website, and download Adobe Reader.
<http://www.adobe.com>

Contents of Manuals

☐ **System Software Installation Guide (this guide)**

First, check the package contents, system requirements, and procedure for installing the system software.

☐ **PM1D Version 2 Supplementary Manual**

This explains the changes in system software version 2.

☐ **PM1D Manager Owner's Manual**

This explains installation and use of PM1D Manager.

Updating the firmware and CS1D screen software

Before you install the license for the system software, you must use the following procedure to update all software to V2.

Before you use the PM1D system

PM1D system contains software that allows the CS1D/DSP1D(-EX)/A18/AO8/DIO8 (subsequently referred to as "the components") to operate independently. Thus, all software must be updated to the same version to ensure consistency. If you fail to perform this step, the CS1D's version checking function will detect the inconsistency, and the system will not start up correctly. Since it is possible that the various components are not running the same software version (due to different dates of purchase, or any other reason), you must use the included CD-ROM to update the entire system before using the system for the first time. Once you have updated the entire system to the same version, subsequent updates are not necessary. However if you add a new unit, or use a new CD-ROM to update, you must once again update the entire system.



- You must use the included CD-ROM to update the entire system. After updating the system, you must execute INITIALIZE ALL MEMORIES. If you fail to perform the update or initialization, operation is not guaranteed. For details on INITIALIZE ALL MEMORIES, refer to "Initializing memories" within the Reference Manual (Software).
- If your CS1D was shipped from the factory with the V2 system software, it will not have a product ID. Please note that in this case, if you change from V2 to an earlier version, you won't be able to return to V2 (i.e., you won't be able to install the V2 license). If you are unable to return to V2, you will have to purchase a PM1DV2K upgrade kit.

System Requirements

The following system is required in order to perform the update.

- An IBM PC/AT compatible computer with a Pentium II 233 MHz processor and 64 MB of memory or better. (Pentium II 350 MHz and 128 MB of memory is recommended.)

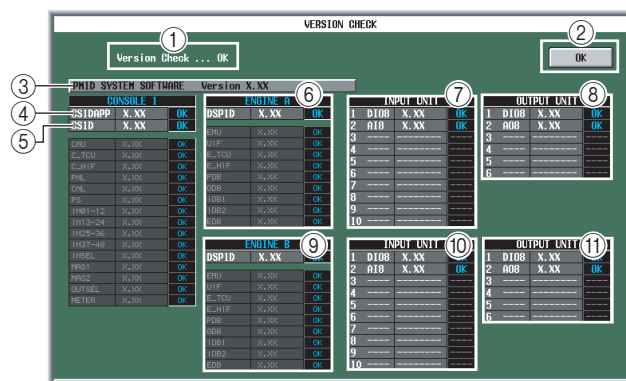
NOTE:

- Depending on your hardware or OS, system requirements may be greater than listed above.
- If you are using a notebook computer, system requirements may be greater than listed above as the minimum. Also, communication may become unstable due to the power management settings in the Windows Control Panel, or due to power management settings specific to notebook CPUs (e.g., SpeedStep (Intel Corporation), PowerNow! (AMD Corporation), or LongRun (Transmeta Corporation)). Please disable these power management settings and use your computer with its power supply adaptor connected.
- For the latest version of the software and details on operating requirements, please refer to the following URL.
<http://www.yamahaproaudio.com/>

- Internet Explorer 4.0 or later
- Display capability of 800 x 600 pixels (SVGA, High Color) or better
- 10 MB or more free hard disk space
- Mouse
- CD-ROM drive
- Serial port
- RS-232C cable (cross-connected)
- One ATA-compliant PCMCIA Type II PC Flash Storage card (subsequently referred to as “memory card”)
- A device with a PCMCIA Type II card slot (A system that allows the files from the CD-ROM to be copied to the memory card)

About the version checking function

The CS1D screen software contains a function that checks whether the software of all components is a valid combination of versions. If there is a combination of different versions, or if any component has malfunctioned, the VERSION CHECK popup window will appear when the CS1D starts up. This will not appear if all components are correct. This version check function is explained below.



- ① Checking result message field
- ② OK button (may not be displayed in some cases)
- ③ PM1D SYSTEM SOFTWARE version display field
- ④ CS1D screen software version display field
- ⑤ CS1D firmware version display field
- ⑥ ENGINE A DSP1D(-EX) firmware version display field
- ⑦ ENGINE A INPUT UNIT firmware version display field
- ⑧ ENGINE A OUTPUT UNIT firmware version display field
- ⑨ ENGINE B DSP1D(-EX) firmware version display field
- ⑩ ENGINE B INPUT UNIT firmware version display field
- ⑪ ENGINE B OUTPUT UNIT firmware version display field

Version display fields ④ through ⑪ convey the following information.

12	1	D108	X.XX	OK
13	2	A18	X.XX	OK
14	3	-----	-----	-----
	4	-----	-----	-----
	5	-----	-----	-----
	6	-----	-----	-----
	7	-----	-----	-----
	8	-----	-----	-----
	9	-----	-----	-----
	10	-----	-----	-----

- ⑫ Component name or firmware name
- ⑬ Firmware version display field for ⑫
- ⑭ Result of test

Of these fields, lines displayed in white characters indicate the version of that entire component. Lines displayed in smaller characters of gray provide details on firmware versions of individual CPUs within the component. Of these, fields ⑬ and ⑭ may be of the following types.

Field ⑬ display list

x.xx (numeric)	Firmware version
NO REPLY	CPU within the component does not respond
-----	Board not installed in the DSP1D(-EX)
DIFF.	Board is incorrectly inserted in the DSP1D(-EX)

Field ⑭ display list

OK	Normal
----	Not connected (normal)
NG	Illegal firmware version within the component or no response from CPU within the component
OLD	Old version
NEW	New version
DIFF	Illegal combination of versions

The above test results are summarized, and a message is shown in ①. If this popup window appears, refer to the following explanation and resolve the reason for the problem.

□ [Results other than OK]

If there is a problem with other than the firmware that operates the controls of the CS1D and the INPUT UNIT / OUTPUT UNIT, the OK button ② will not appear.

In this case, it will be impossible to perform any screen operations or use any of the controls, and thus impossible to control the system.

Since correct operation cannot be guaranteed in such a state, please remove the cause of the problem. The system will not recover until the cause is removed.

If there is a problem with the firmware that operates the controls of the CS1D and the INPUT UNIT / OUTPUT UNIT, the OK button ② will appear.

Click the OK button, and the system will forcibly be started up, ignoring the faulty component or faulty portion of the component.

At this time, a popup window will appear to inform you which component is being ignored, and the following limitations will apply. However, the correctly functioning components will operate, allowing you to control the remaining portions of the system.

INPUT/OUTPUT UNIT section

INPUT UNIT not OK	Only that unit is muted, and will not be controllable
OUTPUT UNIT not OK	Only that unit is muted, and will not be controllable

CONSOLE section

INPUT01-12 not OK	INPUT block (CS1D lower left) inoperable
INPUT13-24 not OK	INPUT block (CS1D upper left) inoperable
INPUT25-36 not OK	INPUT block (CS1D lower right) inoperable
INPUT37-48 not OK	INPUT block (CS1D upper right) inoperable
INSEL not OK	SELECTED INPUT CHANNEL block inoperable
MAS1 not OK	MIX OUTPUT / DCA GROUP block inoperable
MAS2 not OK	MIX OUTPUT / DCA GROUP block inoperable
OUTSEL not OK	SELECTED OUTPUT CHANNEL block, SCENE MEMORY block, MASTER block, LCD FUNCTION ACCESS block, USER DEFINE block, STEREO OUTPUT block, Data entry block (except for track pad and left/right switches) inoperable
METER not OK	METER BRIDGE block will not function

The system will recover from these limitations when you remove the cause of the problem and turn on the power of the CS1D once again.

NOTE:

- These problems can normally be solved by executing the system update described below. However, if problems remain after this is done, please contact Yamaha service.
- If there is a problem with a unit, please check whether there is a faulty connection for the D-Sub half-pitch 68-pin cable. The unit will not function correctly if a pin is bent or not inserted.

System update procedure

When updating the system, you must perform the update and installation for all components. Using the procedure described below, perform the firmware update and the CS1D screen software update.



Scene data etc. that you created using this system must be backed up on a memory card before you perform the update. The internal data will be lost when you perform the update procedure.

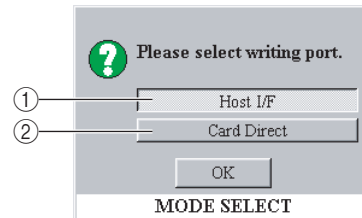
For details on how to save data to a memory card, refer to the Reference Manual (Software).

Updating the firmware (CS1D/ DSP1D(-EX)/AI8/A08/DIO8)

You will use the PM1DLOAD software to update the firmware of each component. The basic procedure and the update method for each firmware is explained below.

[Explanation of each screen in PM1DLOAD]

Mode Select screen



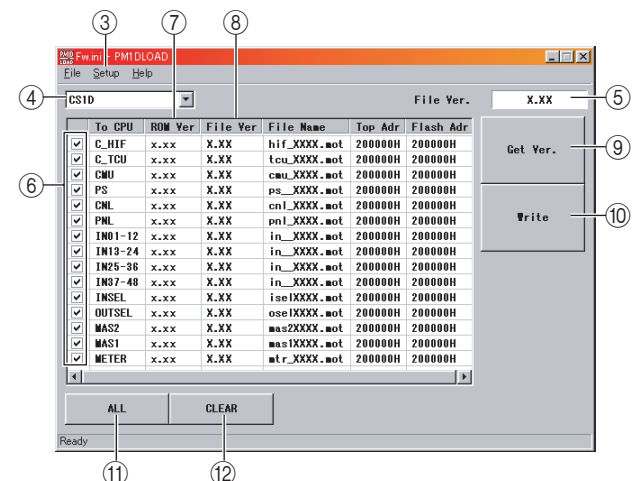
① "Write via serial port" mode

You must select this.

② "Write board directly" mode

Do not select this.

Main screen



③ [Setup] menu

Serial Port	select the computer's serial port (only ports 1-9 are supported) to use
Connection Point	select the serial port (only ports 1-9 are supported) to use on the PM1D system
Fonts	change the display font

④ Target select menuspecify the component to be written

⑤ Overall versionindicates the version to be written (overall version)

⑥ Writing target check boxes.....check boxes select writing target

⑦ ROM version fieldindicates the currently-written version

⑧ File version fieldindicates the version to be written

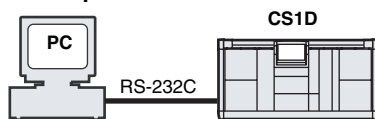
⑨ [GetVer.] button.....obtains the ROM version

- ⑩ [Write] buttoninitiates firmware writing for all items checked in the writing check boxes ⑥
- ⑪ [ALL] buttoncheck all writing check boxes ⑥
- ⑫ [CLEAR] buttonuncheck all writing check boxes ⑥

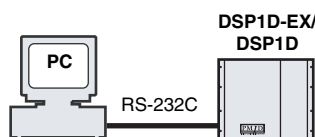
[Using PM1DLOAD]

1 Depending on the target that is being updated, the firmware is sent over the following routes from the computer (PC). Connect an RS-232C cable (cross connected) or a D-Sub half-pitch 68-pin cable to provide the appropriate route, and turn on the power.

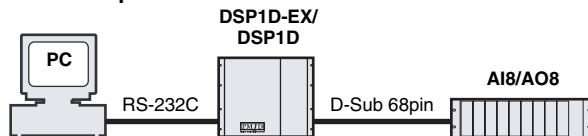
• CS1D update



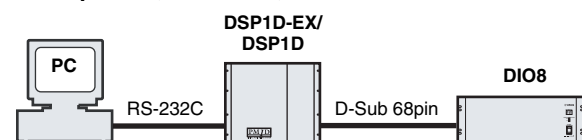
• DSP1D-EX/DSP1D update



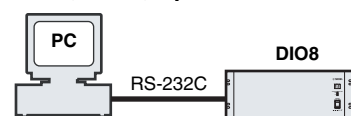
• AI8/AO8 update



• DIO8 update (via DSP1D)



• DIO8 (Direct) update



- Scene data etc. that you created using this system must be backed up to a memory card before you perform the update. Power-off all speaker amps, set all output volumes to the minimum position, and do not input any audio signals.
- If any components not shown above and not related to the update are connected, turn off their power.

- When updating the AI8/AO8, you must observe the restrictions listed below. If you fail to observe these, it may be impossible to perform the update.
 - The port connected to the 68-pin cable used for the update must match the port selected by the select switch of the unit.
 - If the firmware is blank (the 7-segment display of the AI8/AO8 indicates 88), make sure that the above condition is met, and then turn on the power. However, you must do this for each unit immediately before updating it.
- When updating the DIO8 via the DSP1D, you must observe the following restriction. If you fail to observe this, it may be impossible to perform the update.
 - Connect OUTPUT A of the DIO8 to one of the INPUT ports of the DSP1D.

- 2** Before you perform the update, you must exit all other software and memory-resident programs.
- 3** Insert the included CD-ROM into your CD-ROM drive, and choose the [Start] menu item [Run...].
- 4** In the input field, type D:\LOADER\PM1DLOAD.EXE (if the CD-ROM drive is drive D: on your computer), and click OK.
- 5** Start up PM1DLOAD, and when the mode select screen appears, select Host I/F ① and click OK.

NOTE: The update cannot be performed if you select Card Direct ② in the Mode Select screen.

- 6** When the PM1DLOAD update software starts, select the serial port (only ports 1–9 are supported) of your computer in the Serial Port field of the [Setup] menu ③.
- 7** In the [Setup] menu ③ Connection Point field, specify the destination that you connected in step 1.
This setting is ignored in the case of the DIO8 (Direct), and need not be set.
- 8** From the target select menu ④, select the components that you want to update.
- 9** Click the [GetVer.] button ⑨. The current firmware version for each component will be displayed. Compare the ROM version field ⑦ and File version field ⑧ of the list, and add a check mark for all lines that have different versions.

NOTE:

- If the firmware has been erased, the version will not be displayed. You must add a check mark in this case as well.
- In some cases, the version of the AO8 cannot be obtained from port B, but if you have made connections and settings in accordance with the restrictions given earlier, you will be able to write the update.

- 10** Click the [Write] button ⑩. Updating of the items you checked in step 9 will begin.

Once you initiate the writing process even once, the screen of the CS1D will indicate “If loading is completed, Please re-start.”

NOTE: When updating the AI8/AO8 or DIO8 via the DSP1D, the restrictions listed in 1 may mean that some units cannot be updated. (In this case, a message will inform you that a unit was skipped.)

- 11** When the update is completed, turn the power of the updated components off and then on once again.
- 12** Click the [GetVer.] button ⑨. Verify that the ROM version field ⑦ and the File version field ⑧ are now the same for each updated item.
If the ROM version cannot be obtained, or if the versions do not match, the update was not successful. Please repeat the procedure from step 9.
- 13** Repeat steps 1–12 until all components have been updated.
- 14** After updating the CS1D screen software described in the section that follows, re-start all components once again.
- 15** Verify that the VERSION CHECK popup window does not appear when the CS1D starts up, and that you are able to use the system normally. Then close PM1DLOAD, and you are finished with the procedure.

NOTE: If the update was unsuccessful, a popup window will inform you that VERSION CHECK failed. Check the settings and connections, and perform the update once again from step 1.



While the update is in progress, never power-off the system or connect/disconnect cables. If the update was interrupted, turn off the power of each component, wait for five seconds, turn the power on again, and perform the update again.

Updating the CS1D screen software

To update the CS1D screen software, you will use one memory card, and copy the files from CD-ROM via the memory card into the CS1D. Before you perform this procedure, you must complete the firmware update described in the preceding section.

- 1** You will need to provide a commercially-available memory card and a system that is able to read this card (e.g., a notebook computer that has a PCMCIA Type II slot).
Turn off the power of the CS1D.
- 2** Insert the formatted memory card into your computer.
For details on how to format the card, refer to the manual of your computer or card.
- 3** Insert the included CD-ROM into your CD-ROM drive, and from "My Computer," open the CD-ROM drive.
- 4** Open the CS1DAPP folder, and from the [Edit] menu, choose [Select all]. Next, choose [Copy] from the same [Edit] menu.
- 5** From "My Computer," open the drive of the memory card you inserted.
- 6** From the [Edit] menu, choose [Paste].
- 7** When the copy operation has been completed, remove the memory card.
For details on removing the card, refer to the manual of your computer or memory card.
- 8** Insert the memory card into the CS1D's PC ATA STORAGE CARD slot A or B, and turn on the power of the CS1D.
The normal start-up title screen will not appear, and the CS1D will be in update mode.
- 9** When "START?" appears in the screen, use the track pad to click the OK button.
If you click the CANCEL button at this time, the CS1D will stop operating. Remove the card, and restart the CS1D.
- 10** When the screen indicates "COPY OK," remove the card and restart the CS1D.
- 11** Execute the INITIALIZE ALL MEMORIES operation.
For details on initializing the memory, refer to the Reference Manual (Software).



- Insert only one memory card in the PC ATA STORAGE CARD slot. If you simultaneously insert another card into the other vacant slot, the update may not occur correctly.
- If you updated the entire system, you must execute INITIALIZE ALL MEMORIES. Operation cannot be guaranteed if you fail to initialize the memories. For details, refer to the Reference Manual (Software).

Installing the license

System Requirements

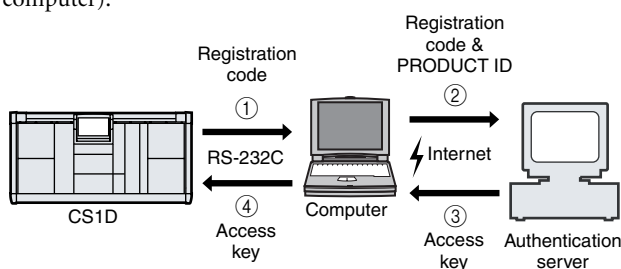
In order to install the license (to authorize the software that was upgraded to V2), you'll need a computer and Internet access as described below.

NOTE: Some operating systems may have to satisfy other requirements in addition to those described below.

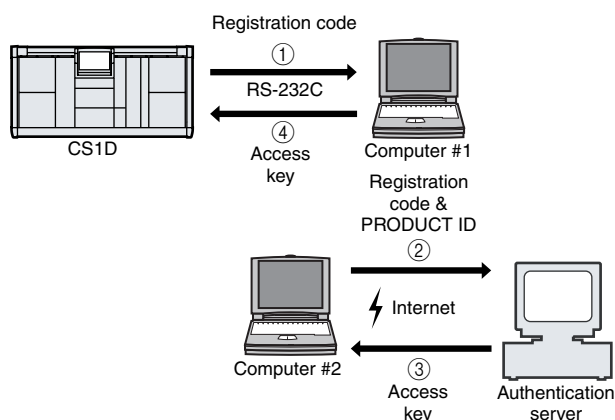
OS:	Windows 98SE, Me, 2000, XP Home Edition, XP Professional
Computer:	PC that features a RC-232C port and an Intel Pentium or Celeron-family processor of 433 MHz or higher
Memory:	128 MB or more
Hard disk:	Available space of 10 MB or more
Display:	1024 x 768 pixels, 256 colors or more (High Color 16-bit or more recommended)
Other requirements:	Access to Internet, Internet Explorer 5.0 or higher

Installation Procedure

Choose one of the following two installation procedures (direct installation or indirect installation) depending on your system environment. In most cases, choose the direct installation procedure (i.e., installing by accessing the Internet from your computer).



Direct installation
(Accessing the Internet from your computer)



Indirect installation
(Accessing the Internet from another computer)

* The numbers in the illustrations above indicate the sequence of the installation procedure.

NOTE:

- You can de-authorize the license of the installed system software, then install it on another CS1D. However, you will be unable to use the de-authorized CS1D until you re-install or re-authorize the software.
- Note that if your CS1D was shipped from the factory with the V2 system software, it will not have a product ID; this means that if you de-authorize the software, you won't be able to reinstall (authorize) it again.

PRODUCT ID

This is a number unique to each software package. This number is required to obtain the access key. It is printed on a label on the CD-ROM case.

Registration code

This is a number unique to each CS1D. This number is required to obtain the access key. It is automatically created from the data inside your console.

Access key

This is required to install the license. You must obtain the access key from the authentication server via the Internet using the PRODUCT ID and registration code.

NOTE: If you lose the registration code or access key, you can obtain them again. You will need the PRODUCT ID to do so. Be sure to keep the PRODUCT ID in a safe place after installation.

Installation Notes

- The software can be installed on only one CS1D.
- You will be responsible for the entire installation procedure.
- Installing the software will erase all user memories in the CS1D and initialize all settings. Be sure to back up important data before installation.
- Before you install, you must update the firmware of all components and the CS1D screen software to V2.
- During the installation procedure, do not turn off the power to the PW1D, remove the cables, or operate the computer in a way not instructed in this manual. Otherwise, the CS1D may malfunction.
- If the installation process fails due to a defective cable etc., power-cycling the PW1D will make it start up not in normal operating mode but with the VERSION CHECK popup screen. In this case, replace the cable and try the installation again.
- If a second installation attempt fails and the CS1D does not operate properly, consult your Yamaha dealer.
- Exit or quit all open application programs before you start installation. During installation, do not execute other programs or activate a window.
- If the computer sleeps in energy saving mode, data transmission to the CS1D may be stopped. Cancel such modes to prevent the computer from falling asleep.

Direct installation

If you can access the Internet directly from your computer, follow the steps below to install the software. See page 10 if you access the Internet from a different computer.



The installation procedure will initialize data in the user memories in the CS1D. Be sure to back up important data using memory card. (Refer to the CS1D Owner's Manual.)

NOTE: If an error message appears, refer to the Error Message list on page 13.

1 Start the computer and check to see if the following steps are complete.

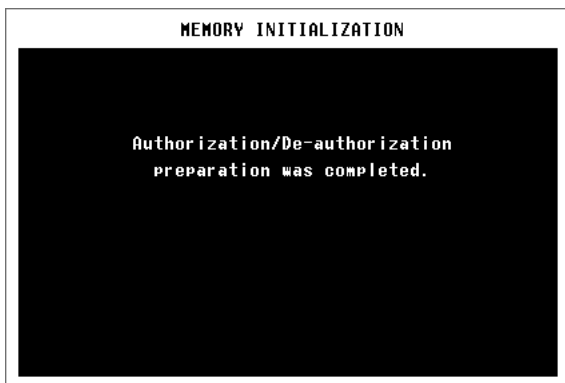
- Connecting the computer and the CS1D using a D-sub 9-pin cross-cable
- Accessing the Internet from the computer
- Backing up the data in the user memories in the CS1D (See the CS1D Owner's Manual.)
- Updating the firmware of each component and the CS1D screen software to V2

2 Power-on the PW1D, and when the opening screen appears in the CS1D's display, press and hold down the left/right switches located below the track pad.

Continue holding down the switches until the display indicates MEMORY INITIALIZATION.

3 Click the AUTHORIZE/DE-AUTHORIZE button.

The display will indicate "Authorization/De-authorization preparation was completed."



4 Insert the included CD-ROM into the CD-ROM drive.

5 Locate the Upgrade folder on the CD-ROM, then copy the folder onto the hard disk.

Do not run the installer directly from the CD-ROM drive.

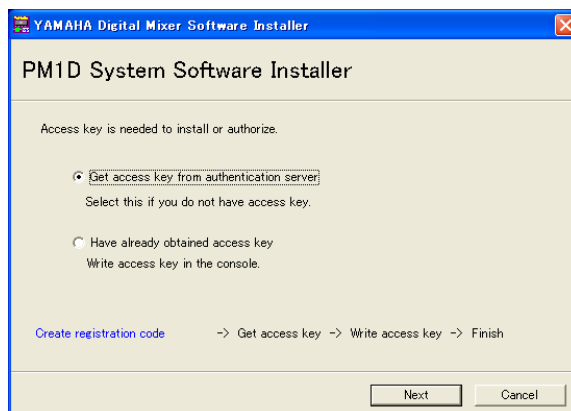
6 Double-click "PM1DUpgrade.exe" in the Upgrade folder.

The installer window opens.



7 Select [Authorize], then click [Next].

The following window opens.



8 Select [Get access key from authentication server], then click [Next].

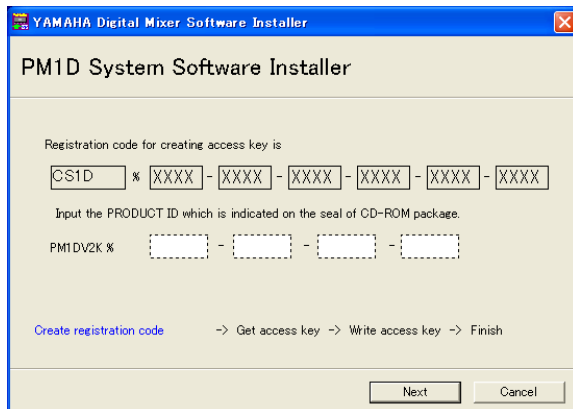
The following window opens.



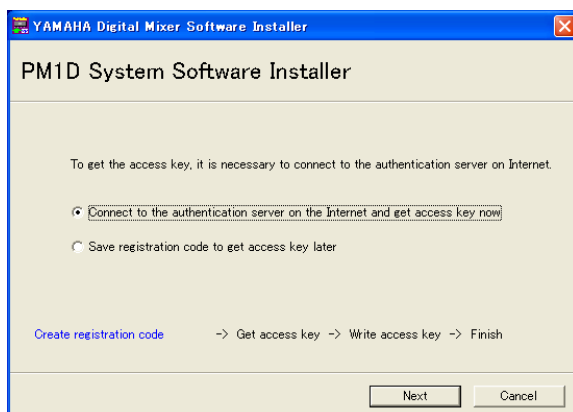
- 9** Select [Create registration code], then click [Next].
The COM port setting window opens.



- 10** Select the COM port (only COM1–4 are supported) to which the CS1D is connected, and click [Next].
The “Connecting to the console...” message appears and the registration code is created.



- 11** Enter the PRODUCT ID number printed on the label on the CD-ROM case, then click [Next].
The following window opens.



NOTE: Keep the PRODUCT ID in a safe place after you enter the number. Even if you lose the registration code or access key, you can install the software using the PRODUCT ID.

- 12** Select [Connect to the authentication server on the Internet and get access key now], then click [Next].
The window indicates “To get access key, get ready to connect to the Internet and click [Next].”

- 13** Make sure that you are prepared to access the Internet, then click [Next].
The computer connects to the authentication server and obtains the access key.

- 14** When the access key is obtained, the following window opens:



- 15** Select [Write access key in console now], then click [Next].
The COM port setting window opens.

- 16** Select the COM port specified in Step 9, then click [Next].

A dialog box indicating the installation progress will appear, and installation will begin.

- 17** When the installation is complete, the following window opens.



When installation is completed, the following screen will appear in the CS1D's display.



18 Select [Start online user registration], then click [Finish].

The browser starts and the user registration page opens. User registration entitles you to additional information and support.

19 Turn off the power to the PW1D, then turn it on.

The CS1D starts in normal mode.

The installation is now complete.

Indirect installation

If you access the Internet from another computer (#2), not from the computer (#1) connected to the CS1D, follow the steps below to install the software.



The installation procedure will initialize data in the user memories in the CS1D. Be sure to back up important data using memory card. (Refer to the CS1D Owner's Manual.)

NOTE: If an error message appears, refer to the Error Message list on page 13.

Follow Steps 1 through 11 (on page 8) using computer #1, then proceed with the following.

12 Select [Save registration code to get access key later.], then click [Next].

The following window opens.



13 Click [Save in file] to save the PRODUCT ID and registration code as a text file.

You can also write down the ID and code on a piece of paper.

14 Copy the text file to the computer (#2) that has access to the Internet.

Follow the steps below on computer #2.

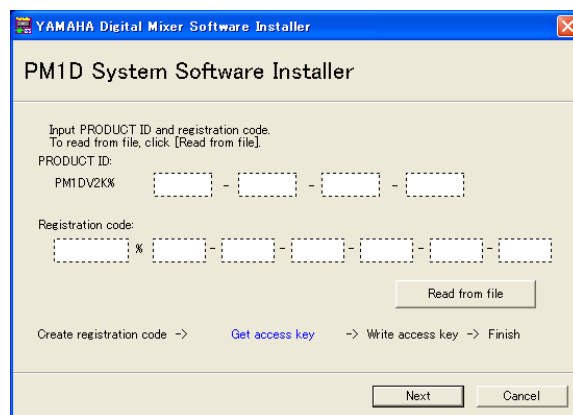
15 Insert the included CD-ROM into the CD-ROM drive on computer #2, locate the Upgrade folder on the CD-ROM, then copy the folder onto the hard disk.

16 Double-click "PM1DUpgrade.exe" in the Upgrade folder.

The installer window opens.

17 Select [Authorize], [Get access key from authentication server], then [Have already created registration code], then click [Next].

The following window opens.



18 Click [Read from file] to read the text file saved in Step 13.

If you wrote down the ID and code on a piece of paper, enter the ID and code from the keyboard.

19 Make sure that the correct PRODUCT ID and registration code are displayed, then click [Next].

The window indicates "To get access key, get ready to connect to the Internet and click [Next]."

20 Make sure that you are prepared to access the Internet, then click [Next].

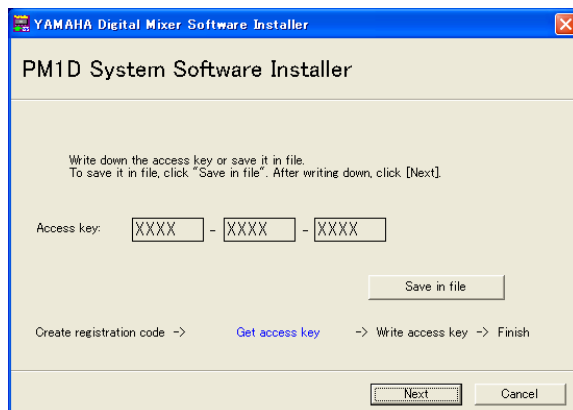
The computer connects to the authentication server and obtains the access key.

21 When the access key is obtained, the following window opens:



22 Select [Save access key to write into console later.], then click [Next].

The following window opens.



- 23** Click [Save in file] to save the access key as a text file.

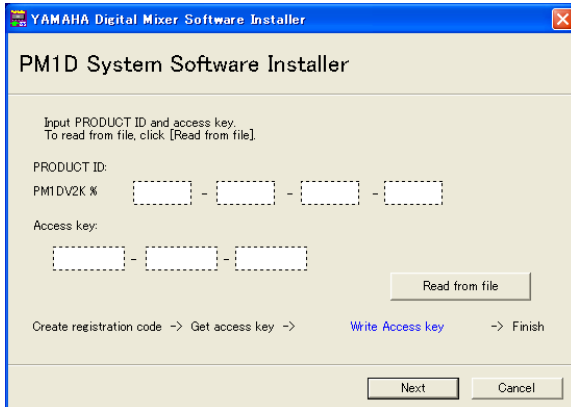
You can also write down the access key displayed on the screen.

- 24** Copy the saved text file to the computer (#1) that is connected to the CS1D.

Follow the steps below on computer #1.

- 25** Start the installer, select [Authorize], then [Have already obtained access key], then click [Next].

The following window opens.



- 26** Click [Read from file] to read the text file saved in Step 23.

- 27** Make sure that the correct access key is displayed, then click [Next].

The COM port setting window opens.

- 28** Make sure that the COM ports specified in Step 9 are selected, then click [Next].

A dialog box indicating the installation progress will appear, and installation will begin.

- 29** When the installation is complete, the following window opens.



- 30** Remove the check mark from the [Start online user registration] check box, then click [Finish].

We recommend that you access the following web page from a computer connected to the Internet and register the product. User registration entitles you to additional information and support.

<http://www.yamahaproaudio.com/register/>

NOTE: After the installation is complete, the registration code and access key will become invalid. To avoid problems that may occur during re-installation, after the installation is complete, delete the text files that contain the registration code and access key.

- 31** Turn off the power to the PW1D, then turn it on.

The CS1D starts in normal mode.

The installation is now complete.

Direct De-authorization

If you wish to move the license from one CS1D to another, you must first de-authorize the license on the current console. If you can access the Internet directly from your computer, follow the steps below to de-authorize the software. See page 12 if you access the Internet from a different computer.

Follow Steps 1 through 6 (on page 8) for direct installation, then proceed with the following.

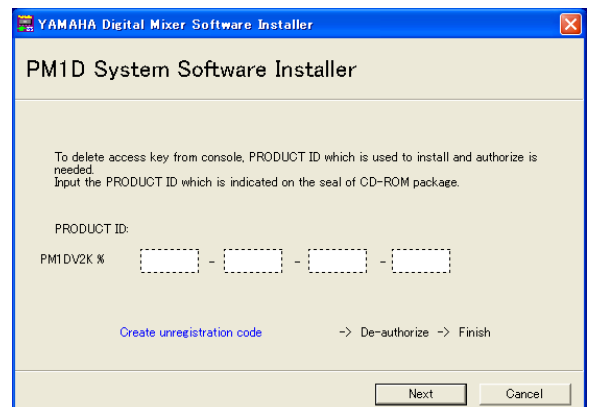
- 7** Select [De-authorize], then click [Next].

The following window opens.



- 8** Select [Create unregistration code], then click [Next].

The following window opens.



- 9** Enter the PRODUCT ID, then click [Next].

The COM port setting window opens.

- 10** Select the COM port (only COM1–4 are supported) to which the CS1D is connected, and click [Next].

The “Connecting to the console...” message is displayed and the unregistration code is created.



- 11** Select [Connect to the authentication server and start deauthorizing now], then click [Next].

The “Start de-authorizing” message is displayed.

- 12** Make sure that you are prepared to access the Internet, then click [Next].

The computer connects to the authentication server and de-authorizes the license.

- 13** When de-authorization is complete, the following window opens.



The de-authorization is now complete. You can now install the license on another console.

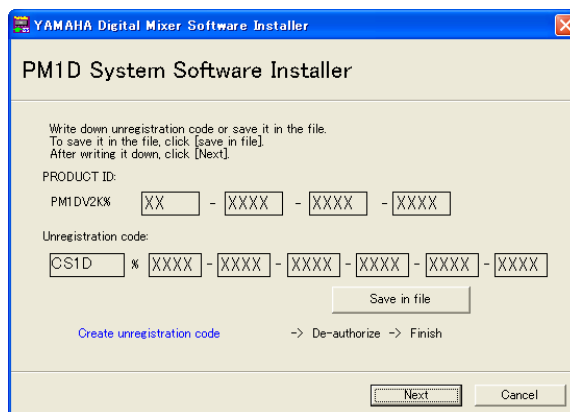
Indirect De-authorization

If you wish to move the license from one console to another, you must first de-authorize the license on the current console. If you access the Internet from another computer (#2), not from the computer (#1) connected to the console, follow the steps below to de-authorize the software.

Follow Steps 1 through 10 (on page 11) for direct de-authorization, then proceed with the following.

- 11** Select [Save unregistration code to de-authorize later.], then click [Next].

The following window opens.



- 12** Click [Save in file] to save the PRODUCT ID and unregistration code as a text file.

You can also write down the ID and code on a piece of paper.

- 13** Copy the text file to the computer (#2) that has access to the Internet.

Follow the steps below on computer #2.

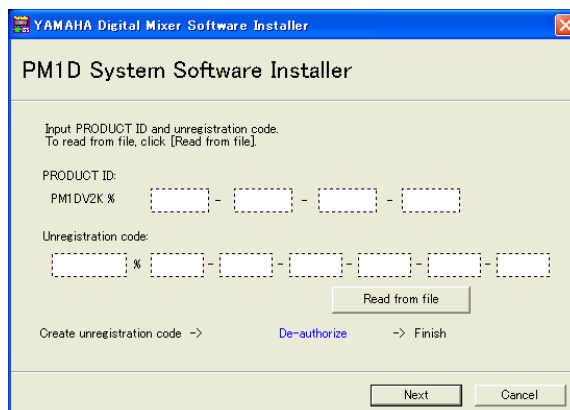
- 14** Insert the included CD-ROM into the CD-ROM drive on computer #2, locate the Upgrade folder on the CD-ROM, then copy the folder onto the hard disk.

- 15** Double-click “PM1Upgrade.exe” in the Upgrade folder.

The installer window opens.

- 16** Select [De-authorize], then [Have already created unregistration code], then click [Next].

The following window opens.



17 Click [Read from file] to read the text file saved in Step 12.

If you wrote down the PRODUCT ID and unregistration code on a piece of paper, enter the ID and code from the keyboard.

18 Make sure that the correct PRODUCT ID and unregistration code are displayed, then click [Next].

The “Start de-authorizing” message is displayed.

19 Make sure that you are prepared to access the Internet, then click [Next].

The computer connects to the authentication server and de-authorizes the license.

20 When de-authorization is complete, the following window opens.



When de-authorization is completed, the following screen will appear in the CS1D's display.



The de-authorization is now complete. You can now install the software on another CS1D.

Error Message List

Input errors

- **PRODUCT ID is wrong.**
- **Registration code is wrong.**
- **Unregistration code is wrong.**
- **Access key is wrong.**
 - Make sure that you have entered the correct PRODUCT ID, registration code, unregistration code, or access key.
- **Content of the file is not correct data.**
 - Make sure that the text file contains the registration code, unregistration code, or access key. The file may have been corrupted. Save the file again.

Errors in connection to the console

- **Unable to connect to the console.**
 - Make sure that the PW1D is powered-on, and that it is connected to the CS1D via a D-sub 9-pin cross-cable. If the CS1D is in normal mode, power-cycle the PW1D, and when the CS1D's display shows the opening screen, press and hold down the left/right switches located below the track pad to start up in MEMORY INITIALIZATION mode. If the above situation does not apply, power-cycle the PW1D, and try starting up the installer again.
- **Unable to initialize license management information in console.**
- **Failed to create registration code.**
 - Install the license again.
- **Unable to initialize license management information in console.**
 - Make sure that you are installing the license in the CS1D for which you obtained the registration code, then try to install again.
- **Access key cannot be written to console.**
 - Make sure that the PRODUCT ID and access key are correct, then try to install again.
- **Cannot delete access key from console. It is not the PRODUCT ID used for getting access key. Check PRODUCT ID and retry de-authorization.**
 - Make sure that the same PRODUCT ID was used to obtain the access key, then try to de-authorize again.
- **Cannot delete access key from console. Because this access key is protected, cannot delete it from console.**
 - You cannot de-authorize this access key.

Errors in connection to the authentication server

- **Unable to connect to the authentication server.**
→ Make sure that the computer is connected to the Internet. The authentication server may be very busy now. Try to connect to the server later.
- **Access key cannot be issued because the PRODUCT ID is wrong.**
- **Access key cannot be issued because registration code is wrong.**
→ Make sure that the PRODUCT ID or the registration code is correct, then try to install again.
- **New access key cannot be issued because this PRODUCT ID has already issued access key.**
→ The license for this PRODUCT ID has already been used on a different CS1D. If you wish to install the license in another CS1D, you must de-authorize the license on the current CS1D. When you de-authorize the license on the current CS1D, you will be unable to use that CS1D until you re-install or re-authorize the license on that console.
- **Unable to de-authorize because unregistration code is not in agreement with the information when access key was issued.**
- **Cannot de-authorize as unregistration code is wrong.**
→ Make sure that the unregistration code is correct, then try to de-authorize the software again.
- **De-authorization is not required as access key has not been issued for this PRODUCT ID.**
→ Check the PRODUCT ID that was used to install the license, then try to de-authorize the license again.

Error Messages on the Console

- **"Please grant authority"**
→ The access key has not been written. After the installation or authorization is complete, you can use the system software.

Troubleshooting

Q: The computer does not communicate with the CS1D.

- A: This installer does not support installation via a USB connection. Please use a D-sub 9-pin cross-cable to make connections before you begin the process.
- A: If there is no problem with the settings described above, turn off and on the power to the CS1D.

Q: The computer cannot access the authentication server.

- A: Make sure that the computer is connected to the Internet.
- A: You must select in Internet Explorer [Tools → Internet Options... → Advanced], then select one or more of "Use SSL 2.0," "Use SSL 3.0," and "Use TLS 1.0." (One or more have already been selected as the default setting.)

Q: The access key, registration code, unregistration code, or PRODUCT ID is incorrect.

- A: The code is different for each CS1D and each software package. Make sure that you are entering the correct code for the correct CS1D and correct package.

Q: You lost the access key.

- A: You can obtain the access key again. Check the PRODUCT ID printed on the label on the CD-ROM case, then try to install the license again.

Q: The CS1D does not respond or operate correctly.

- A: Consult your Yamaha dealer.

Q: You wish to install the license in a different CS1D.

- A: You can de-authorize the license of the installed system software, then install it on another CS1D. However, you will be unable to use the de-authorized CS1D until you re-install or re-authorize the license.

Q: You wish to update the system software to the latest version.

- A: Check the following Yamaha website:
<http://www.yamahaproaudio.com/>

SOFTWARE LICENSE AGREEMENT

PLEASE READ THIS SOFTWARE LICENSE AGREEMENT ("AGREEMENT") CAREFULLY BEFORE USING THIS SOFTWARE. YOU ARE ONLY PERMITTED TO USE THIS SOFTWARE PURSUANT TO THE TERMS AND CONDITIONS OF THIS AGREEMENT. THIS AGREEMENT IS BETWEEN YOU (AS AN INDIVIDUAL OR LEGAL ENTITY) AND YAMAHA CORPORATION ("YAMAHA").

BY breaking the seal of this package YOU ARE AGREEING TO BE BOUND BY THE TERMS OF THIS LICENSE. If you do not agree with the terms, do not install, copy, or otherwise use this software.

1. GRANT OF LICENSE AND COPYRIGHT

Yamaha hereby grants you the right to use one copy of the software program(s) and data ("SOFTWARE") accompanying this Agreement. The term SOFTWARE shall encompass any updates to the accompanying software and data. The SOFTWARE is owned by Yamaha and/or Yamaha's licensor(s), and is protected by relevant copyright laws and all applicable treaty provisions. While you are entitled to claim ownership of the data created with the use of SOFTWARE, the SOFTWARE will continue to be protected under relevant copyrights.

- You may use the SOFTWARE on a single console.
- You may make one copy of the SOFTWARE in machine-readable form for backup purposes only, if the SOFTWARE is on media where such backup copy is permitted. On the backup copy, you must reproduce Yamaha's copyright notice and any other proprietary legends that were on the original copy of the SOFTWARE.
- You may permanently transfer to a third party all your rights in the SOFTWARE, provided that you do not retain any copies and the recipient reads and agrees to the terms of this Agreement.

2. RESTRICTIONS

- You may not engage in reverse engineering, disassembly, decompilation or otherwise deriving a source code form of the SOFTWARE by any method whatsoever.
- You may not reproduce, modify, change, rent, lease, or distribute the SOFTWARE in whole or in part, or create derivative works of the SOFTWARE.
- You may not electronically transmit the SOFTWARE from one computer to another or share the SOFTWARE in a network with other computers.
- You may not use the SOFTWARE to distribute illegal data or data that violates public policy.
- You may not initiate services based on the use of the SOFTWARE without permission by Yamaha Corporation. Copyrighted data, including but not limited to MIDI data for songs, obtained by means of the SOFTWARE, are subject to the following restrictions which you must observe.
- Data received by means of the SOFTWARE may not be used for any commercial purposes without permission of the copyright owner.
- Data received by means of the SOFTWARE may not be duplicated, transferred, or distributed, or played back or performed for listeners in public without permission of the copyright owner.
- The encryption of data received by means of the SOFTWARE may not be removed nor may the electronic watermark be modified without permission of the copyright owner.

3. TERMINATION

This Agreement becomes effective on the day that you receive the SOFTWARE and remains effective until terminated. If any copyright law or provisions of this Agreement is violated, the Agreement shall terminate automatically and immediately without notice from Yamaha. Upon such termination, you must immediately destroy the licensed SOFTWARE, any accompanying written documents and all copies thereof.

4. LIMITED WARRANTY ON MEDIA

As to SOFTWARE sold on tangible media, Yamaha warrants that the tangible media on which the SOFTWARE is recorded will be free from defects in materials and workmanship under normal use for a period of fourteen (14) days from the date of receipt, as evidenced by a copy of the receipt. Yamaha's entire liability and your exclusive remedy will be replacement of the defective media if it is returned to Yamaha or an authorized Yamaha dealer within fourteen days with a copy of the receipt. Yamaha is not responsible for replacing media

damaged by accident, abuse or misapplication. TO THE FULLEST EXTENT PERMITTED BY LAW, YAMAHA EXPRESSLY DISCLAIMS ANY IMPLIED WARRANTIES ON THE TANGIBLE MEDIA, INCLUDING THE IMPLIED WARRANTIES OF MERCHANTABILITY AND FITNESS FOR A PARTICULAR PURPOSE.

5. DISCLAIMER OF WARRANTY ON SOFTWARE

You expressly acknowledge and agree that use of the SOFTWARE is at your sole risk. The SOFTWARE and related documentation are provided "AS IS" and without warranty of any kind. NOTWITHSTANDING ANY OTHER PROVISION OF THIS AGREEMENT, YAMAHA EXPRESSLY DISCLAIMS ALL WARRANTIES AS TO THE SOFTWARE, EXPRESS, AND IMPLIED, INCLUDING BUT NOT LIMITED TO THE IMPLIED WARRANTIES OF MERCHANTABILITY, FITNESS FOR A PARTICULAR PURPOSE AND NON-INFRINGEMENT OF THIRD PARTY RIGHTS. SPECIFICALLY, BUT WITHOUT LIMITING THE FOREGOING, YAMAHA DOES NOT WARRANT THAT THE SOFTWARE WILL MEET YOUR REQUIREMENTS, THAT THE OPERATION OF THE SOFTWARE WILL BE UNINTERRUPTED OR ERROR-FREE, OR THAT DEFECTS IN THE SOFTWARE WILL BE CORRECTED.

6. LIMITATION OF LIABILITY

YAMAHA'S ENTIRE OBLIGATION HEREUNDER SHALL BE TO PERMIT USE OF THE SOFTWARE UNDER THE TERMS HEREOF. IN NO EVENT SHALL YAMAHA BE LIABLE TO YOU OR ANY OTHER PERSON FOR ANY DAMAGES, INCLUDING, WITHOUT LIMITATION, ANY DIRECT, INDIRECT, INCIDENTAL OR CONSEQUENTIAL DAMAGES, EXPENSES, LOST PROFITS, LOST DATA OR OTHER DAMAGES ARISING OUT OF THE USE, MISUSE OR INABILITY TO USE THE SOFTWARE, EVEN IF YAMAHA OR AN AUTHORIZED DEALER HAS BEEN ADVISED OF THE POSSIBILITY OF SUCH DAMAGES. In no event shall Yamaha's total liability to you for all damages, losses and causes of action (whether in contract, tort or otherwise) exceed the amount paid for the SOFTWARE.

7. THIRD PARTY SOFTWARE

Third party software and data ("THIRD PARTY SOFTWARE") may be attached to the SOFTWARE. If, in the written materials or the electronic data accompanying the Software, Yamaha identifies any software and data as THIRD PARTY SOFTWARE, you acknowledge and agree that you must abide by the provisions of any Agreement provided with the THIRD PARTY SOFTWARE and that the party providing the THIRD PARTY SOFTWARE is responsible for any warranty or liability related to or arising from the THIRD PARTY SOFTWARE. Yamaha is not responsible in any way for the THIRD PARTY SOFTWARE or your use thereof.

- Yamaha provides no express warranties as to the THIRD PARTY SOFTWARE. IN ADDITION, YAMAHA EXPRESSLY DISCLAIMS ALL IMPLIED WARRANTIES, INCLUDING BUT NOT LIMITED TO THE IMPLIED WARRANTIES OF MERCHANTABILITY AND FITNESS FOR A PARTICULAR PURPOSE, as to the THIRD PARTY SOFTWARE.
- Yamaha shall not provide you with any service or maintenance as to the THIRD PARTY SOFTWARE.
- Yamaha is not liable to you or any other person for any damages, including, without limitation, any direct, indirect, incidental or consequential damages, expenses, lost profits, lost data or other damages arising out of the use, misuse or inability to use the THIRD PARTY SOFTWARE.

8. GENERAL

This Agreement shall be interpreted according to and governed by Japanese law without reference to principles of conflict of laws. Any dispute or procedure shall be heard before the Tokyo District Court in Japan. If for any reason a court of competent jurisdiction finds any portion of this Agreement to be unenforceable, the remainder of this Agreement shall continue in full force and effect.

9. COMPLETE AGREEMENT

This Agreement constitutes the entire agreement between the parties with respect to use of the SOFTWARE and any accompanying written materials and supersedes all prior or contemporaneous understandings or agreements, written or oral, regarding the subject matter of this Agreement. No amendment or revision of this Agreement will be binding unless in writing and signed by a fully authorized representative of Yamaha.

For details of products, please contact your nearest Yamaha representative or the authorized distributor listed below.

Pour plus de détails sur les produits, veuillez-vous adresser à Yamaha ou au distributeur le plus proche de vous figurant dans la liste suivante.

Die Einzelheiten zu Produkten sind bei Ihrer unten aufgeführten Niederlassung und bei Yamaha Vertragshändlern in den jeweiligen Bestimmungsländern erhältlich.

Para detalles sobre productos, contacte su tienda Yamaha más cercana o el distribuidor autorizado que se lista debajo.

NORTH AMERICA

CANADA

Yamaha Canada Music Ltd.
135 Milner Avenue, Scarborough, Ontario,
M1S 3R1, Canada
Tel: 416-298-1311

U.S.A.

Yamaha Corporation of America
6600 Orangethorpe Ave., Buena Park, Calif. 90620,
U.S.A.
Tel: 714-522-9011

CENTRAL & SOUTH AMERICA

MEXICO

Yamaha de México S.A. de C.V.
Calz. Javier Rojo Gómez #1149,
Col. Guadalupe del Moral
C.P. 09300, México, D.F., México
Tel: 55-5804-0600

BRAZIL

Yamaha Musical do Brasil Ltda.
Rua Joaquim Floriano, 913 - 4º andar, Itaim Bibi,
CEP 04534-013 Sao Paulo, SP. BRAZIL
Tel: 011-3704-1377

ARGENTINA

Yamaha Music Latin America, S.A.
Sucursal de Argentina
Olga Cossettini 1553, Piso 4 Norte
Madero Este-C1107CEK
Buenos Aires, Argentina
Tel: 011-4119-7000

PANAMA AND OTHER LATIN AMERICAN COUNTRIES/ CARIBBEAN COUNTRIES

Yamaha Music Latin America, S.A.
Torre Banco General, Piso 7, Urbanización Marbella,
Calle 47 y Aquilino de la Guardia,
Ciudad de Panamá, Panamá
Tel: +507-269-5311

EUROPE

THE UNITED KINGDOM

Yamaha Music U.K. Ltd.
Sherbourne Drive, Tilbrook, Milton Keynes,
MK7 8BL, England
Tel: 01908-366700

GERMANY

Yamaha Music Central Europe GmbH
Siemensstraße 22-34, 25462 Rellingen, Germany
Tel: 04101-3030

SWITZERLAND/LIECHTENSTEIN

Yamaha Music Central Europe GmbH,
Branch Switzerland
Seefeldstrasse 94, 8008 Zürich, Switzerland
Tel: 01-383 3990

AUSTRIA

Yamaha Music Central Europe GmbH,
Branch Austria
Schleiergasse 20, A-1100 Wien, Austria
Tel: 01-60203900

CZECH REPUBLIC/SLOVAKIA/ HUNGARY/SLOVENIA

Yamaha Music Central Europe GmbH,
Branch Austria, CEE Department
Schleiergasse 20, A-1100 Wien, Austria
Tel: 01-602039025

POLAND

Yamaha Music Central Europe GmbH
Sp.z. o.o. Oddział w Polsce
ul. 17 Stycznia 56, PL-02-146 Warszawa, Poland
Tel: 022-868-07-57

THE NETHERLANDS/ BELGIUM/LUXEMBOURG

Yamaha Music Central Europe GmbH,
Branch Benelux
Clarissenhof 5-b, 4133 AB Vianen, The Netherlands
Tel: 0347-358 040

FRANCE

Yamaha Musique France
BP 70-77312 Marne-la-Vallée Cedex 2, France
Tel: 01-64-61-4000

ITALY

Yamaha Musica Italia S.P.A.
Combo Division
Viale Italia 88, 20020 Lainate (Milano), Italy
Tel: 02-935-771

SPAIN/PORTUGAL

Yamaha Música Ibérica, S.A.
Ctra. de la Coruna km. 17, 200, 28230
Las Rozas (Madrid), Spain
Tel: 91-639-8888

SWEDEN

Yamaha Scandinavia AB
J. A. Wettergrens Gata 1, Box 30053
S-400 43 Göteborg, Sweden
Tel: 031 89 34 00

DENMARK

YS Copenhagen Liaison Office
Generatorvej 6A, DK-2730 Herlev, Denmark
Tel: 44 92 49 00

NORWAY

Norsk filial av Yamaha Scandinavia AB
Grini Næringspark 1, N-1345 Østerås, Norway
Tel: 67 16 77 70

RUSSIA

Yamaha Music (Russia)
Office 4015, entrance 2, 21/5 Kuznetskii
Most street, Moscow, 107996, Russia
Tel: 495 626 0660

OTHER EUROPEAN COUNTRIES

Yamaha Music Central Europe GmbH
Siemensstraße 22-34, 25462 Rellingen, Germany
Tel: +49-4101-3030

AFRICA

Yamaha Corporation,
Asia-Pacific Music Marketing Group
Nakazawa-cho 10-1, Naka-ku, Hamamatsu,
Japan 430-8650
Tel: +81-53-460-2313

MIDDLE EAST

TURKEY/CYPRUS

Yamaha Music Central Europe GmbH
Siemensstraße 22-34, 25462 Rellingen, Germany
Tel: 04101-3030

OTHER COUNTRIES

Yamaha Music Gulf FZE
LOB 16-513, P.O.Box 17328, Jubel Ali,
Dubai, United Arab Emirates
Tel: +971-4-881-5868

ASIA

THE PEOPLE'S REPUBLIC OF CHINA

Yamaha Music & Electronics (China) Co., Ltd.
25/F., United Plaza, 1468 Nanjing Road (West),
Jingan, Shanghai, China
Tel: 021-6247-2211

INDONESIA

PT. Yamaha Music Indonesia (Distributor)
PT. Nusantara
Gedung Yamaha Music Center, Jalan Jend. Gatot
Subroto Kav. 4, Jakarta 12930, Indonesia
Tel: 21-520-2577

KOREA

Yamaha Music Korea Ltd.
8F, 9F, Dongsung Bldg. 158-9 Samsung-Dong,
Kangnam-Gu, Seoul, Korea
Tel: 080-004-0022

MALAYSIA

Yamaha Music Malaysia, Sdn., Bhd.
Lot 8, Jalan Perbandaran, 47301 Kelana Jaya,
Petaling Jaya, Selangor, Malaysia
Tel: 3-78030900

SINGAPORE

Yamaha Music Asia Pte., Ltd.
#03-11 A-Z Building
140 Paya Lebar Road, Singapore 409015
Tel: 747-4374

TAIWAN

Yamaha KHS Music Co., Ltd.
3F, #6, Sec.2, Nan Jing E. Rd. Taipei.
Taiwan 104, R.O.C.
Tel: 02-2511-8688

THAILAND

Siam Music Yamaha Co., Ltd.
4, 6, 15 and 16th floor, Siam Motors Building,
891/1 Rama 1 Road, Wangmai,
Pathumwan, Bangkok 10330, Thailand
Tel: 02-215-2626

OTHER ASIAN COUNTRIES

Yamaha Corporation,
Asia-Pacific Music Marketing Group
Nakazawa-cho 10-1, Naka-ku, Hamamatsu,
Japan 430-8650
Tel: +81-53-460-2317

OCEANIA

AUSTRALIA

Yamaha Music Australia Pty. Ltd.
Level 1, 99 Queensbridge Street, Southbank,
Victoria 3006, Australia
Tel: 3-9693-5111

COUNTRIES AND TRUST TERRITORIES IN PACIFIC OCEAN

Yamaha Corporation,
Asia-Pacific Music Marketing Group
Nakazawa-cho 10-1, Naka-ku, Hamamatsu,
Japan 430-8650
Tel: +81-53-460-2313

HEAD OFFICE

Yamaha Corporation, Pro Audio & Digital Musical Instrument Division
Nakazawa-cho 10-1, Naka-ku, Hamamatsu, Japan 430-8650
Tel: +81-53-460-2441