

ER1000FCT – ER1006FCT

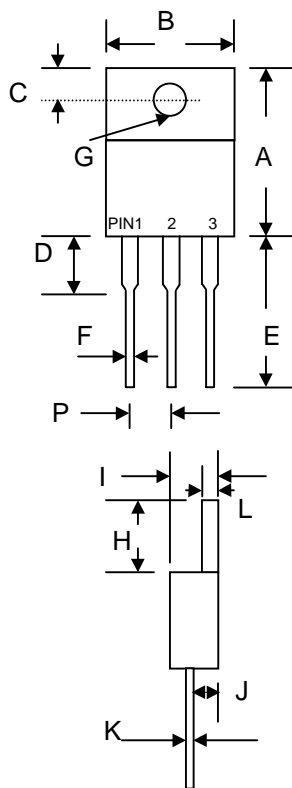
10A ISOLATION SUPER-FAST GLASS PASSIVATED RECTIFIER

Features

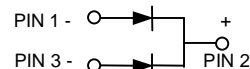
- Glass Passivated Die Construction
- Super-Fast Switching for High Efficiency
- High Current Capability
- Low Reverse Leakage Current
- High Surge Current Capability
- Plastic Material has UL Flammability Classification 94V-O

Mechanical Data

- Case: ITO-220 Full Molded Plastic
- Terminals: Plated Leads Solderable per MIL-STD-202, Method 208
- Polarity: See Diagram
- Weight: 2.24 grams (approx.)
- Mounting Position: Any
- Marking: Type Number



ITO-220		
Dim	Min	Max
A	14.9	15.1
B	—	10.5
C	2.62	2.87
D	3.56	4.06
E	13.46	14.22
F	0.68	0.94
G	3.74 Ø	3.91 Ø
H	5.84	6.86
I	4.44	4.70
J	2.54	2.79
K	0.35	0.64
L	1.14	1.40
P	2.41	2.67
All Dimensions in mm		



Maximum Ratings and Electrical Characteristics @T_A=25°C unless otherwise specified

Single Phase, half wave, 60Hz, resistive or inductive load.
For capacitive load, derate current by 20%.

Characteristic	Symbol	ER 1000FCT	ER 1001FCT	ER 1001AFCT	ER 1002FCT	ER 1003FCT	ER 1004FCT	ER 1006FCT	Unit
Peak Repetitive Reverse Voltage Working Peak Reverse Voltage DC Blocking Voltage	VRRM VRWM VR	50	100	150	200	300	400	600	V
RMS Reverse Voltage	VR(RMS)	35	70	105	140	210	280	420	V
Average Rectified Output Current @T _C = 100°C	Io	10							A
Non-Repetitive Peak Forward Surge Current 8.3ms Single half sine-wave superimposed on rated load (JEDEC Method)	IFSM	150							A
Forward Voltage @IF = 5.0A	VFM	0.95				1.3		1.7	V
Peak Reverse Current @TA = 25°C At Rated DC Blocking Voltage @TA = 100°C	IRM	10 400							µA
Reverse Recovery Time (Note 1)	trr	35				50			nS
Typical Junction Capacitance (Note 2)	Cj	70				50			pF
Operating and Storage Temperature Range	Tj, TSTG	-65 to +150							°C

Note: 1. Measured with I_F = 0.5A, I_R = 1.0A, I_{RR} = 0.25A.
2. Measured at 1.0 MHz and applied reverse voltage of 4.0V D.C.

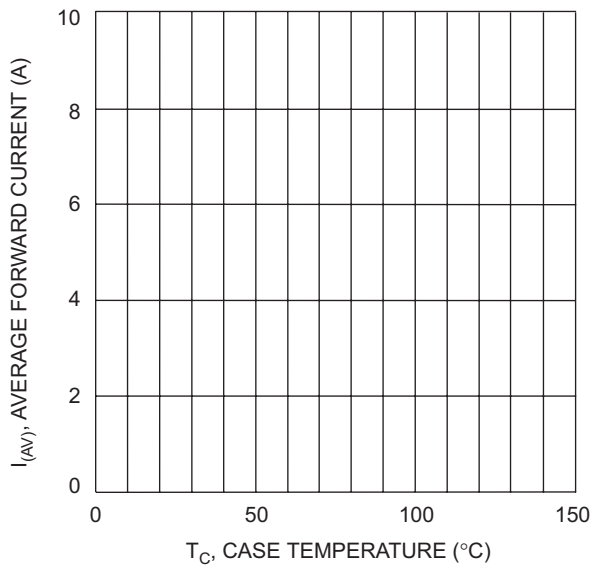


Fig. 1 Forward Current Derating Curve

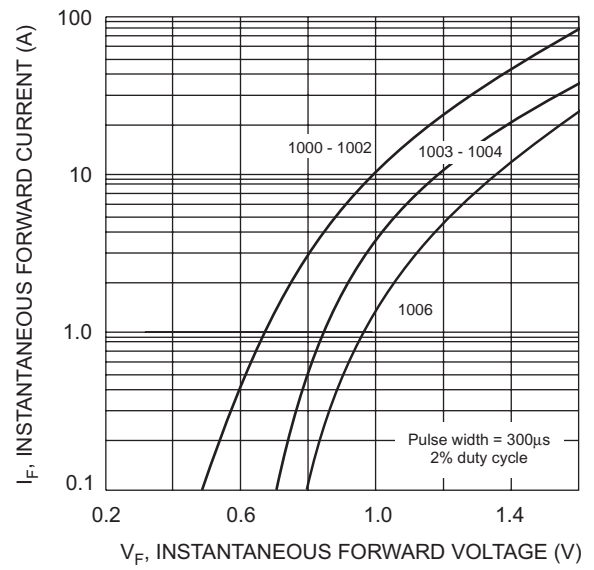


Fig. 2 Typical Forward Characteristics

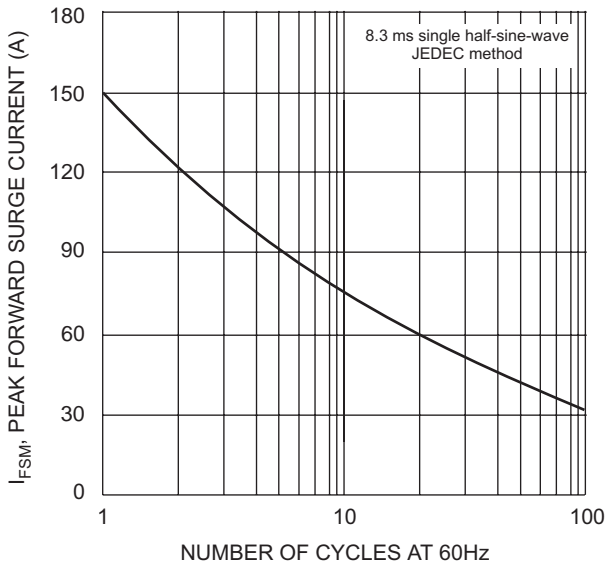


Fig. 3 Max Non-Repetitive Surge Current

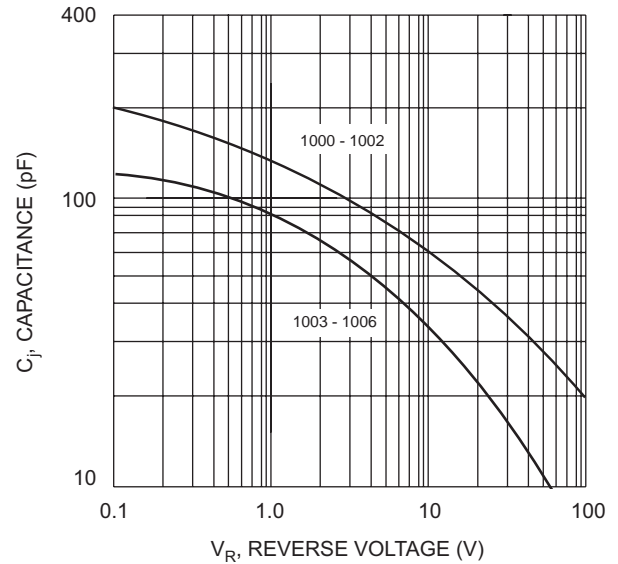


Fig. 4 Typical Junction Capacitance

ORDERING INFORMATION

Product No.	Package Type	Shipping Quantity
ER1000FCT	ITO-220	50 Units/Tube
ER1001FCT	ITO-220	50 Units/Tube
ER1001AFCT	ITO-220	50 Units/Tube
ER1002FCT	ITO-220	50 Units/Tube
ER1003FCT	ITO-220	50 Units/Tube
ER1004FCT	ITO-220	50 Units/Tube
ER1006FCT	ITO-220	50 Units/Tube

Shipping quantity given is for minimum packing quantity only. For minimum order quantity, please consult the Sales Department.

Won-Top Electronics Co., Ltd (WTE) has checked all information carefully and believes it to be correct and accurate. However, WTE cannot assume any responsibility for inaccuracies. Furthermore, this information does not give the purchaser of semiconductor devices any license under patent rights to manufacturer. WTE reserves the right to change any or all information herein without further notice.

WARNING: DO NOT USE IN LIFE SUPPORT EQUIPMENT. WTE power semiconductor products are not authorized for use as critical components in life support devices or systems without the express written approval.

Won-Top Electronics Co., Ltd.

No. 44 Yu Kang North 3rd Road, Chine Chen Dist., Kaohsiung, Taiwan

Phone: 886-7-822-5408 or 886-7-822-5410

Fax: 886-7-822-5417

Email: sales@wontop.com

Internet: <http://www.wontop.com>

We power your everyday.