

Distributed by:

JAMECO[®]
ELECTRONICS

www.Jameco.com ♦ 1-800-831-4242

The content and copyrights of the attached
material are the property of its owner.

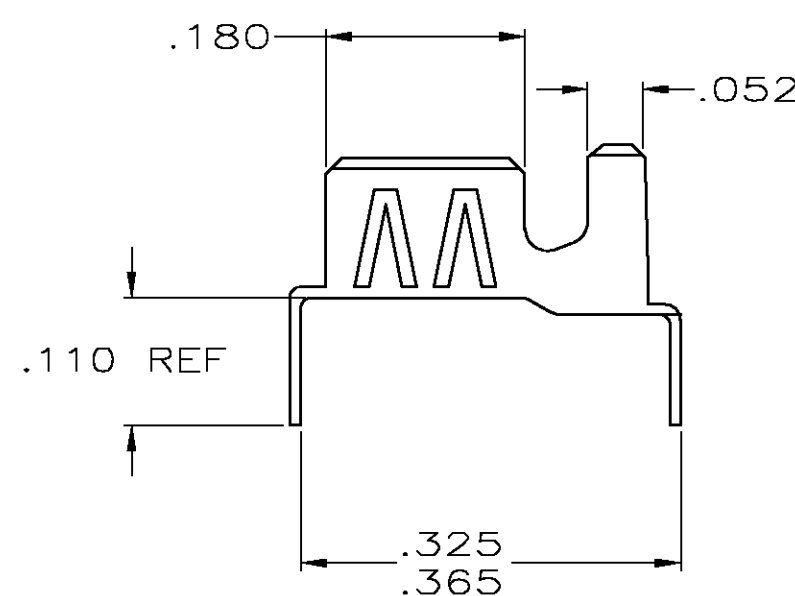
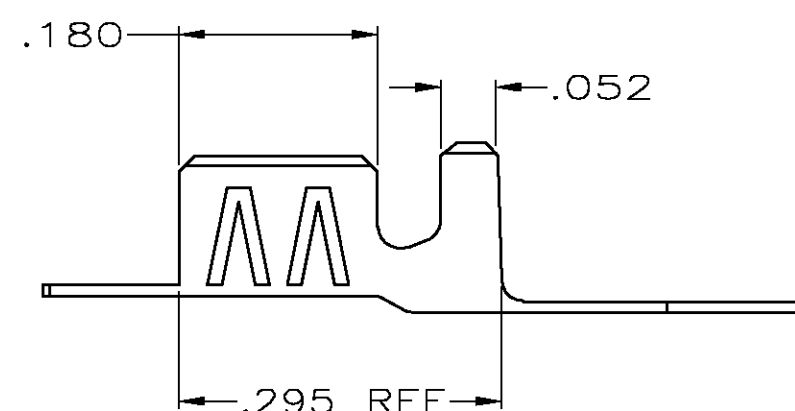
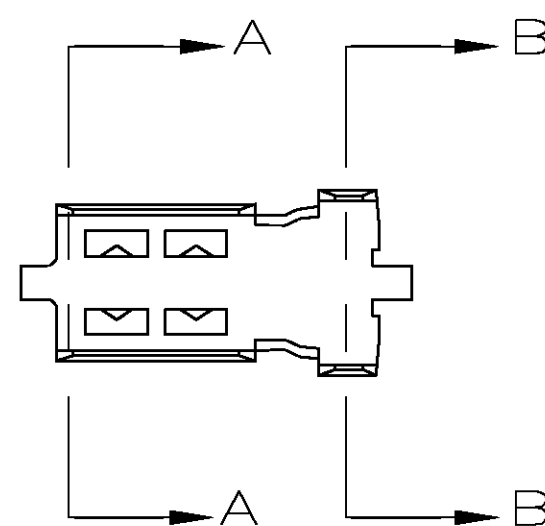
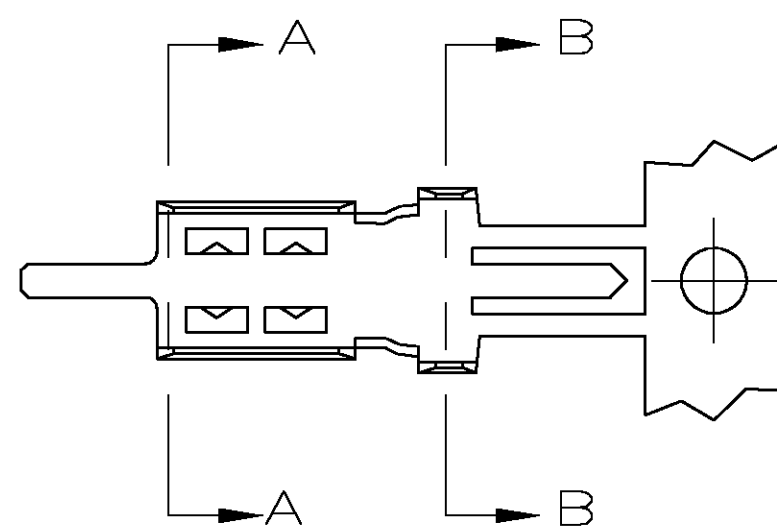
Jameco Part Number 921088

THIS DRAWING IS UNPUBLISHED.

RELEASED FOR PUBLICATION

COPYRIGHT BY TYCO ELECTRONICS CORPORATION. ALL RIGHTS RESERVED.

LOC	DIST	REVISIONS			
		P	LTR	DESCRIPTION	DATE
AJ	16		N	RELEASE PER 0S14-0202-04	17MAY04



VIEW C

VIEW D

1. ACCEPTS COAX CABLE WITH .095-.110 O.D. JACKETS AND .055-.065 DIELECTRIC O.D.
EXAMPLE: RG-174 AND RG-316

2. TIN PLATE PER ASTM-B-545.

3. INSTRUCTION SHEET NO.: 408-2472-2.

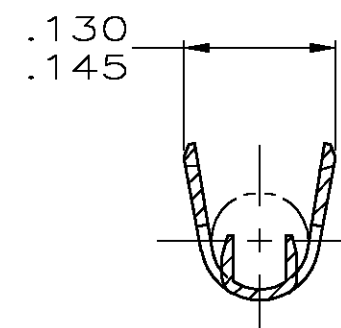
4. ON STRIP

5. ON STRIP, LEGS MUST BE BENT MANUALLY AFTER CRIMPING.

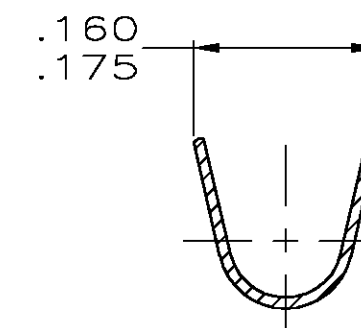
6. LOOSE PIECE PARTS WITH PREFORMED LEGS.

7. BRASS PER ASTM-B-36.

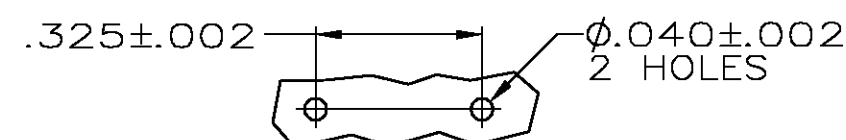
8. TIN-LEAD PLATE PER ASTM-B-545.



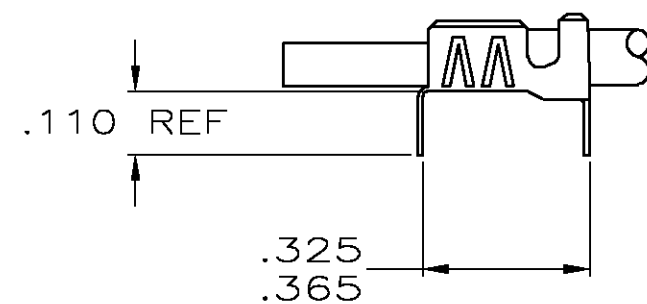
SECTION A-A



SECTION B-B



PCB LAYOUT



AS APPLIED BY APPLICATOR

VIEW E



AS APPLIED BY APPLICATOR

VIEW F

2	D	6	9-226176-2
2	C&F	5	9-226176-1
2	C&E	4	9-226176-0
8	D	6	226176-4
8	C&F	5	226176-3
8	C&E	4	226176-2
FINISH	VIEW	TYPE	PART NUMBER

THIS DRAWING IS A CONTROLLED DOCUMENT.		DWN M. OBRINE 30JUN99	tyco Electronics Tyco Electronics Corporation Harrisburg, Pa 17105-3608	
DIMENSIONS: INCHES		CHK M. OBRINE 30JUN99		
	TOLERANCES UNLESS OTHERWISE SPECIFIED:		NAME	
	0 PLC ± -		APVD J. CABARLO 30JUN99	
	1 PLC ± -		PRODUCT SPEC	
	2 PLC ± -		APPLICATION SPEC	
MATERIAL SEE NOTE 7		FINISH	WEIGHT .007 OZ	SIZE A2
SEE TABLE		CUSTOMER DRAWING	SCALE 6:1	CAGE CODE 00779
			DRAWING NO. C-226176	RESTRICTED TO -
			SHEET 1 OF 1	REV N