

TOSHIBA

Leading Innovation >>>

NETWORK CAMERA

Model: IK-WB70A

Quick Start Guide and Important Safeguards

This guide describes the hardware installation.



Refer the user's manual (PDF file) contained in the CD-ROM for settings, operations and other information.

The application Adobe Reader is needed to see PDF files. If you do not have this application, download it from the Website of Adobe Systems Incorporated.

For information on our latest products and peripheral devices, refer to the following Website:

■ <http://www.toshibasecurity.com>

The above URL is subject to change without prior notice.

If the URL changes, refer to the Toshiba website (<http://www.toshiba.com>).

Introduction

FCC (USA)-INFORMATION

NOTE: This equipment has been tested and found to comply with the limits for a Class A digital device, pursuant to Part 15 of the FCC Rules. These limits are designed to provide reasonable protection against harmful interference when the equipment is operated in a commercial environment. This equipment generates, uses, and can radiate radio frequency energy and, if not installed and used in accordance with the instruction manual, may cause harmful interference to radio communications. Operation of this equipment in a residential area is likely to cause harmful interference in which case the user will be required to correct the interference at his own expense.

USER-INSTALLER CAUTION: Your authority to operate this FCC verified equipment could be voided if you make changes or modifications not expressly approved by the party.

This device complies with Part 15 of the FCC Rules.

Operation is subject to the following two conditions:

(1) This device may not cause harmful interference, and (2) this device must accept any interference received, including interference that may cause undesired operation.

This Class A digital apparatus complies with Canadian ICES-003.

Cet appareil numérique de la classe A est conforme à la norme NMB-003 du Canada

Thank you for purchasing the IK-WB70A Network Camera. Before you start using the camera, read this quick start guide carefully to ensure correct usage. Once you have finished reading this quick start guide, keep it in a convenient place for future reference.

The design, specifications, software, and quick start guide contents are subject to change without prior notice.

Terms and Trademarks

- The term "OS" is used in this manual to indicate operating systems compatible with this product.
 - Windows® XP: Microsoft® Windows® XP operating system
 - Windows Vista®: Microsoft® Windows Vista® Business operating system
- The formal name of Windows® is Microsoft® Windows® Operating System.
- Microsoft®, Windows® and Windows Vista® are trademarks or registered trademarks of Microsoft® Corporation in the United States and other countries.
- Adobe is a registered trademark and Adobe Reader is a trademark of Adobe Systems Incorporated.
- Other product names appearing in this quick start guide may be trademarks or registered trademarks of their respective holders.

NOTE

- This network camera might not operate correctly depending on the network environment.

Table of Contents

Introduction

● Introduction.....	2
• Terms and Trademarks	3
● Table of Contents.....	4
● IMPORTANT SAFEGUARDS	5
● NOTES ON USE AND INSTALLATION	9
● Setting Network Camera Environment.....	10
• Items needed for network camera monitoring system.....	10

Quick Start Guide

● Contents	11
● Physical Description.....	12
● Hardware Installation(1).....	13
● Network Deployment.....	14
● Assigning IP Address.....	16
● Retrieving Images.....	17
● Adjusting the Lens.....	18
● Hardware Installation(2).....	19

IMPORTANT SAFEGUARDS

1. Read Instructions

Read all the safety and operating instructions before operating the product.

2. Retain Instructions

Retain the safety instructions and user's manual for future reference.

3. Warnings

Comply with all warnings on the product and in the user's manual.

4. Follow Instructions

Follow all operating and use instructions.

5. Cleaning

Disconnect this video product from the power supply before cleaning.

6. Attachments

Do not use attachments not recommended by the video product manufacturer as they may cause hazards.

7. Accessories

Do not place this video product on an unstable cart, stand, tripod, bracket or table. The video product may fall, causing serious injury to a person, or serious damage to the product. Use only with stand, tripod, bracket, or table recommended by the manufacturer, or sold with the video product. Any mounting of the product should follow the manufacturer's instructions, and should use a mounting accessory recommended by the manufacturer.

8. Ventilation

This video product should never be placed near or over a radiator or heat register. If this product is placed in a built in installation verify that there is proper ventilation so that the camera temperature operates within the recommended temperature range.

9. Power Sources

This video product should be operated only from the type of power source indicated on the information label. If you are not sure of the type of power supply at your location, consult your product dealer.

IMPORTANT SAFEGUARDS (Cont.)

10. Power-Cord Protection

Power cords should be routed so that they are not likely to be walked on or pinched by items placed upon or against them. Pay particular attention to cords at plugs, screws and the point where they exit the product.

11. Installation

Install this video product on a secure part of the ceiling or wall. If installed on an unsecured location, the camera could fall causing injury and damage.

12. Lightning

For additional protection on this video product during a lightning storm, or when it is left unattended and unused for long periods of time, unplug it from the wall outlet and disconnect the power supply and cable system. This will prevent damage to the video product due to lightning and power-line surges. If lightning occurs, do not touch the unit or any connected cables in order to avoid electric shock.

13. Overloading

Do not overload the power supply or extension cords as this can result in a risk of fire or electric shock.

14. Object and Liquid Entry

Never push objects of any kind into this video product through openings as they may touch dangerous electrical points or short-out parts that could result in a fire or electrical shock. Never spill liquid of any kind on the video product.

15. Servicing

Do not attempt to service this video product yourself as opening or removing covers may expose you to dangerous electrical or other hazards. Refer all servicing to qualified service personnel.

16. Damage Requiring service

Disconnect this video product from the power supply and refer servicing to qualified service personnel under the following conditions.

- a. When the power-supply cord or plug is damaged.
- b. If liquid has been spilled, or objects have fallen into the video product.
- c. If the video product has been submerged in water.
- d. If the video product does not operate normally by following the operating instructions in the user's manual. Adjust only those controls that are covered by the user's manual as an improper adjustment of other controls may result in damage and will often require extensive work by a qualified technician to restore the video product to its normal operation.
- e. If the video product has been dropped or the cabinet has been damaged.
- f. When the video product exhibiting a distinct change in performance which indicates a need for service.

17. Replacement Parts

When replacing parts be sure the service technician uses parts specified by the manufacturer or have the same characteristics as the original part. Unauthorized substitutions may result in fire, electric shock or other hazards.

18. Safety Check

Upon completion of any service or repairs to this video product, ask the service technician to perform safety checks to determine that the video product is in proper operating condition.

IMPORTANT SAFEGUARDS (Cont.)

CAUTION TO REDUCE THE RISK OF ELECTRIC SHOCK.
DO NOT REMOVE COVER. NO USER SERVICEABLE PARTS INSIDE.
REFER SERVICING TO QUALIFIED SERVICE PERSONNEL.



The lightning flash with arrowhead symbol, within an equilateral triangle, is intended to alert the user to the presence of uninsulated "dangerous voltage" within the product's enclosure that may be of sufficient magnitude to constitute a risk of electric shock to persons.



The exclamation point within an equilateral triangle is intended to alert the user to the presence of important operating and maintenance (servicing) instructions in the literature accompanying the appliance.

WARNING:

TO REDUCE THE RISK OF FIRE OR
ELECTRIC SHOCK, DO NOT
SUBMERGE THIS CAMERA IN
WATER.

FIELD INSTALLATION MARKING:

WORDED : "THIS INSTALLATION SHOULD BE MADE BY A QUALIFIED
SERVICE PERSON AND SHOULD CONFORM TO ALL LOCAL CODES."

NOTES ON USE AND INSTALLATION

- **Do not aim the camera at the sun**

Never aim the camera at the sun even with the camera power off.

- **Do not shoot intense light**

Intense light such as a spotlight may cause a bloom or smear. A vertical stripe may appear on the screen. However, this is not a malfunction.

- **Treat the camera with care**

Dropping or subjecting the camera to intense vibration may cause it to malfunction.

- **Never touch internal parts**

Do not touch the internal parts of the camera other than the parts specified.

- **Do not submerge in water**

The camera has some protection to water (see IP rating), and can be used indoors or outdoors.

If the camera was submerged in water, turn off the power and contact your dealer.

- **Keep the camera installation away from video noise**

If cables are wired near electric lighting wires or a TV set, noise may appear in images. In this event relocate cables or reinstall equipment.

- **Check the ambient temperature and humidity**

Avoid using the camera where the temperature is hotter or colder than the specified operating range. Doing so could affect the internal parts or cause the image quality to deteriorate. Special care is required to use the camera at high temperature and humidity.

- **Should you notice any trouble**

If any trouble occurs while you are using the camera, turn off the power and contact your dealer. If you continue to use the camera when there is something wrong with it, the trouble may get worse and an unpredictable problem may occur.

Setting Network Camera Environment

Items needed for network camera monitoring system

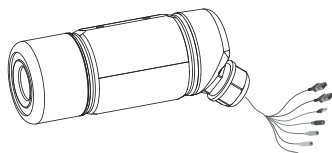
- Administrator's personal computer
The personal computer that is given all authorities for setting, operating, monitoring and other functions with the network camera is called the "administrator's personal computer" in this guide.
- * The personal computer for viewing monitored images is called the "user's personal computer" in this quick start guide. The network camera can be viewed by more than one personal computer at the same time.

Recommended personal computer system requirements:

- Windows® XP or Vista Business
- Internet Explorer Ver 6.0 or 7.0
- CPU: Intel® Pentium® 4 1.7 GHz or higher
- Memory: XP = 256 MB or more, Vista = 1 GB or more
- Connection equipment such as Ethernet cables, and hub or router.
 - The LAN cable type differs depending on the connection method.
- Camera search application "Installation Wizard"
 - Install this application from the CD-ROM supplied as an accessory. (Double-click "Setup.exe" in the CD-ROM and install the application by following the onscreen instructions.)

Contents

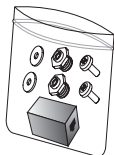
● IK-WB70A



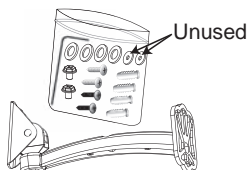
● Shade



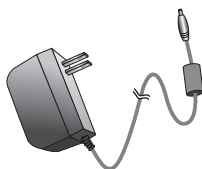
● Screws / RJ45 female/female coupler



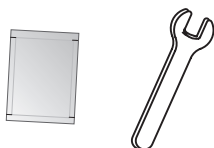
● Mounting bracket



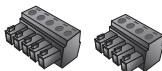
● AC adapter



● Silica gel / Wrench



● I/O Connectors



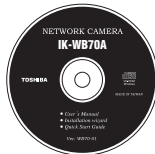
● Quick Start Guide and Important Safeguards



● Warranty

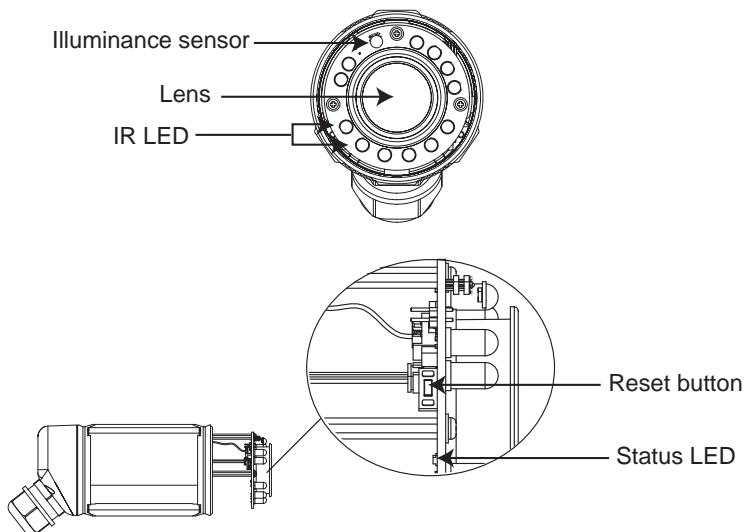


● CD-ROM

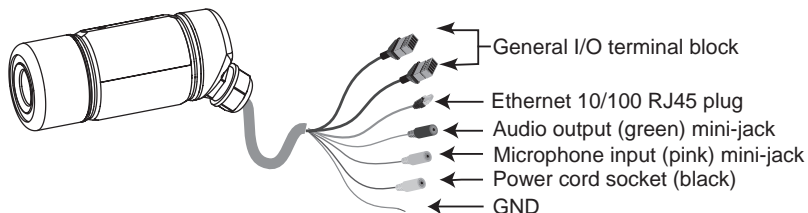


Physical Description

● Front panel



● Connectors



Cable length: approx. 39 inches (1000mm)

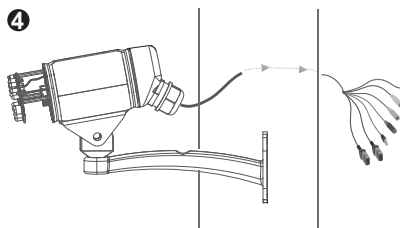
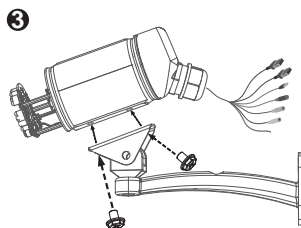
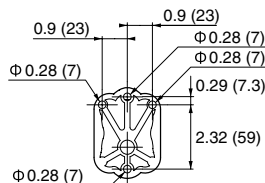
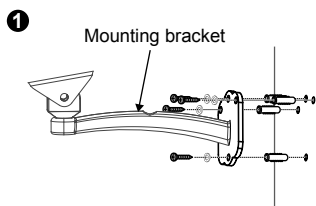
Hardware Installation(1)

Follow the steps below to mount the Network Camera:

1. Drill four pilot holes ($\Phi 0.31$ inch X 1.5 inches(D))($\Phi 8$ mm X 38 mm (D)) to fit in the holes of the Mounting Bracket.
 - Hammer the supplied plastic anchors into the holes.
 - Align the four holes of the Mounting Bracket with the four plastic anchors; insert the supplied screws with Mounting Bracket to corresponding holes.
2. Remove the lens cover by rotating it counterclockwise. Record the MAC number on the side of the camera lens for use in setting up the network camera.
3. Install the camera to the Mounting Bracket, secure using a screw driver.
4. Run the control cable through the wall or into the waterproof junction box.

Note:

- The attached screws and anchors are used to install the camera to a solid surface. (e.g. concrete) If installing to loose or thin material surfaces, use the appropriate anchors (not included) with the screws.
- If installing to the ceiling, use the appropriate bracket (not supplied).
- If installing to high locations, be careful not to fall the camera causing injury and damage.



Network Deployment

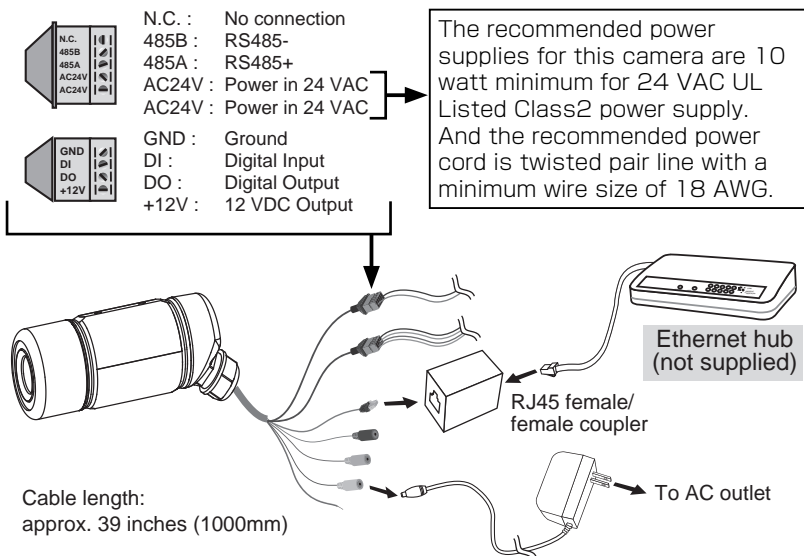
General Connection (without PoE)

1. If you have external devices such as sensors and alarms, make connections from general I/O terminal block by the supplied I/O connectors.
Insert the external sensor's cables to the connector and fasten the supplied screws.
2. Use the supplied RJ45 female/female coupler to connect the Network Camera to a hub.
Use Category 5 Cross Cable when Network Camera is directly connected to PC.
3. Connect the supplied AC adapter.

Power input

Connect the power adapter of the supplied AC adapter, 24 VAC UL Listed Class2 power supply, or PoE hub.

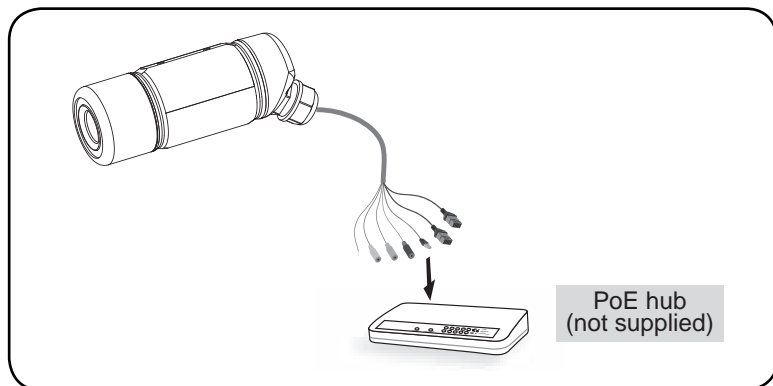
Connect the power adapter jack to the Network Camera before plugging in to the power socket. This will reduce the risk of accidental electric shock.



Power over Ethernet (PoE)

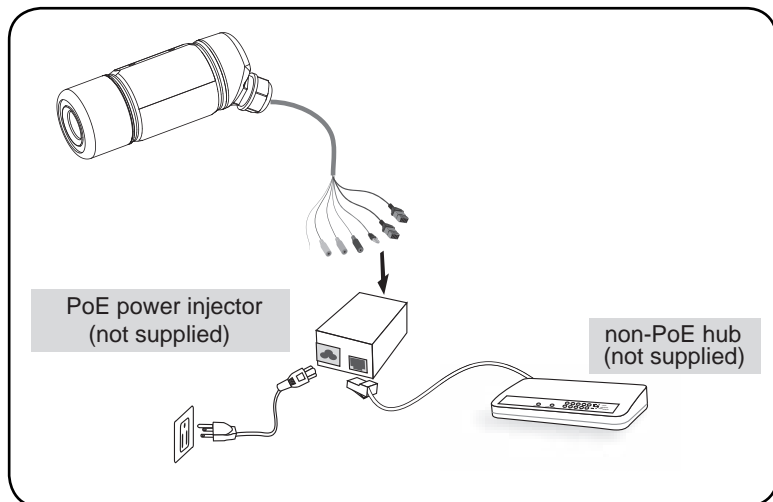
● When using a PoE hub

The Network Camera is PoE-compliant, allowing transmission of power and data to both run in a single Ethernet cable. See the following illustration to connect the Network Camera to a PoE hub via Ethernet cable.



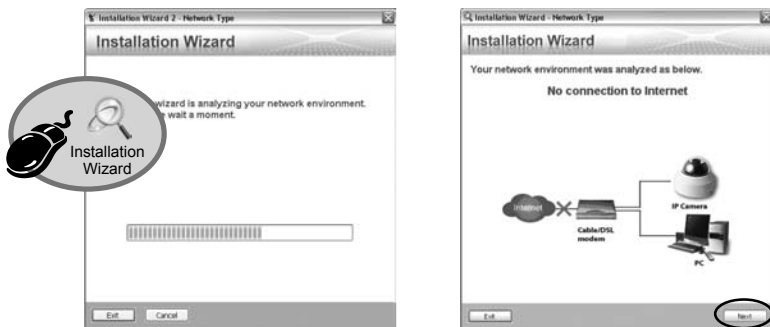
● When using a non-PoE hub

Use a PoE power injector to connect between the Network Camera and a non-PoE hub.

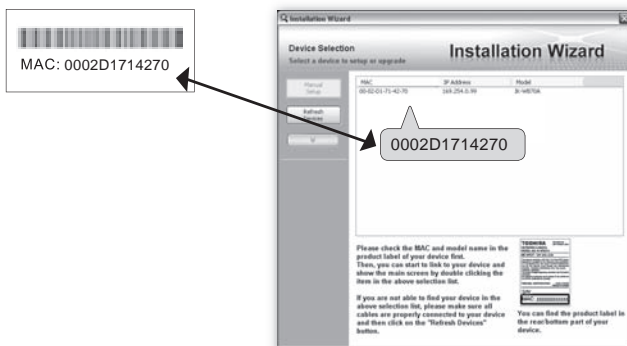


Assigning IP Address

1. Install the "Installation Wizard" under the Software Utility directory from CD-ROM.
2. The program will conduct analyses on your network environment. After your network is analyzed, please click on the "Next" button to continue the program.



3. The program searches for other Network Cameras on the same LAN.
4. After searching, the main installer window will pop up. Click on the MAC that matches the one labeled on the side of the camera lens to connect the Internet Explorer to the Network Camera.



NOTE

- If "Installation Wizard" does not perform normally or the camera can not be found during the search even though the camera and a PC are connected correctly, please switch off the wireless LAN of a PC.
- Installation Wizard can search the location of the Network Camera even though DHCP is not used on the network.
Reassign the static IP address because IP address of the Network Camera has been set 169.254.*.* by default.

Retrieving Images

1. Access to the Network Camera from the LAN.
2. Retrieve live video through Internet Explorer®.



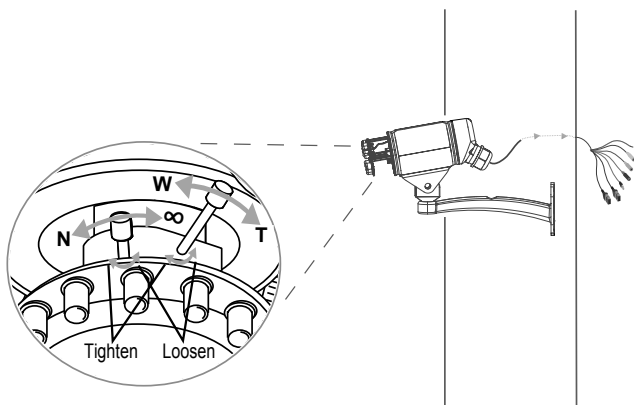
For more information on camera configuration, please refer to user's manual on the CD-ROM.

Adjusting the Lens

Use the live image retrieved from the Network Camera to make the lens adjustments.

To adjust the zoom factor and focus range

1. Position the camera pan and tilt to the desired direction.
2. To adjust the zoom factor loosen the zoom controller screw by turning it counterclockwise to unlock the zoom ring, rotate the zoom ring clockwise or counterclockwise to the desired position. Turn the zoom control screw clockwise to lock the zoom ring, take CAUTION not to overtighten the control screw.
3. To adjust the focus range loosen the focus controller screw by turning it counterclockwise, rotate the focus ring clockwise or counterclockwise to the desired position. Turn the focus control screw clockwise to lock the focus ring, take CAUTION not to overtighten the control screw.

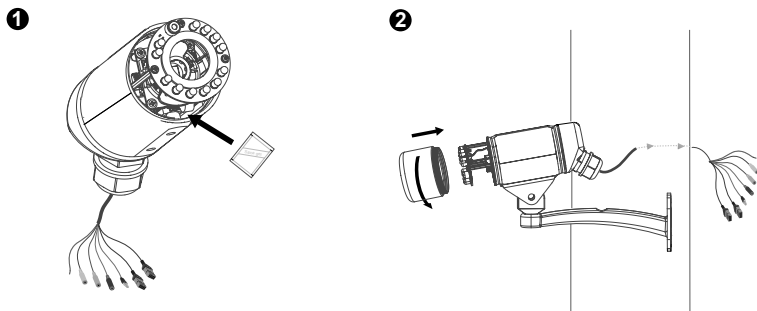


CAUTION: Do not over tighten the control screws. Doing so can damage the structure of camera lens.

Hardware Installation(2)

1. Remove the silica gel from the aluminum foil bag. Attach the silica gel package to the inside of Network Camera. Refer to image 1.
2. Reinstall the Network Camera lens by rotating it clockwise on the camera. Tighten the lens onto the camera to seat the seal. Refer to image 2.

**Treat silica gel bag with enough care.
Do not tear the silica gel package
when reinstalling the lens cover.**

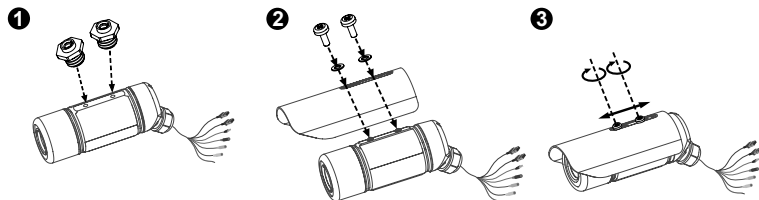


3. If the camera is placed outdoors install the shade following the steps below:

3-1. Install the shade mounting screws on the camera body. Refer to image 1.

3-2. Attach the Shade to the Network Camera and loosely install the two shade retaining screws and washers. Refer to image 2.

3-3. Move the Shade to the desired location and tighten the shade retaining screws. Refer to image 3.



TOSHIBA AMERICA INFORMATION SYSTEMS, INC.

Surveillance & IP Video Products

9740 Irvine Boulevard,

Irvine, CA 92618-1697

Phone Number: (877) 855-1349