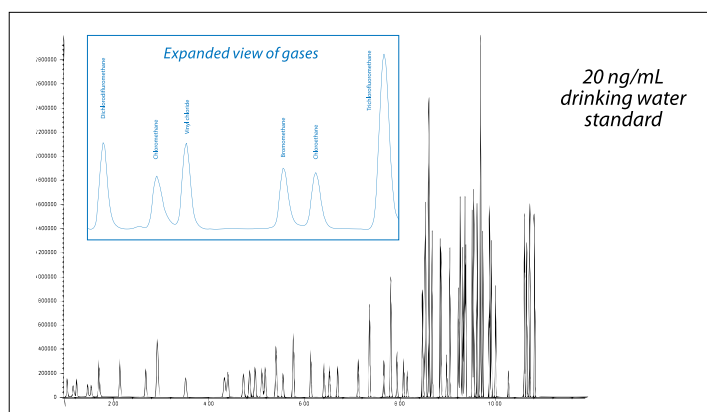


# Stratum PTC

## Purge and Trap Concentrator

- ✓ Electronic Mass Flow Controller allows for use with either He or N<sub>2</sub>. Patent pending ability to vary flow rates in different modes which increases sample throughput
- ✓ Ultra-low carryover
- ✓ Superior water management
- ✓ Proprietary trapping material allows for excellent desorption efficiency



- ✓ Automated leak checking
- ✓ Sample logging ensures data integrity
- ✓ Foam detection and prevention options
- ✓ Software control allows for built-in diagnostics and self-testing

## Product Description

The Stratum Purge and Trap Concentrator utilizes an electronic Mass Flow Controller that delivers extraction gas to the sample, thus stripping the VOCs and delivering them to a sorbent trap. The trap is then heated and back-flushed to a GC for separation and subsequent detection. The system then automatically performs a clean-up step, allowing for the next sample analysis.

## Methods

- USEPA 502.1, 502.2, 524.2, 503.1, 601, 602, 603, 624, 8010, 8015, 8020, 8021, 8030, 8240, 8260
- ASTM and Standard Methods
- Massachusetts VPH and GRO Methods



# Stratum PTC

## Specifications

<b>Cycle Time</b>	The cycle time for the unit is 17 minutes when using an 11 minute purge time. This time also includes desorb, bake, and cool down for the Stratum PTC only and assumes ambient lab temperature. (20-22°C).
<b>Trap Furnace</b>	Ambient to 350°C cools from 250°C to 40°C in 90 seconds or less at ambient lab temperatures (20-22°C).
<b>6-port switching valve</b>	Ambient to 300°C actuated at 24 Volts (D.C.).
<b>External Transfer Line</b>	Ambient to 300°C.
<b>Sample Mount</b>	Ambient to 100°C.
<b>Condenser</b>	Ambient to 250°C.
<b>Sample Heater (optional)</b>	Ambient to 90°C.
<b>Sample Pathway</b>	All tubing and related fitting use Siltek® coating.
<b>Gas Requirements</b>	99.999% Helium or Nitrogen
<b>Electronic Mass Flow Controller</b>	Device is capable of controlling flow rates between 5mL/min. to 500mL/min. Each mode is independently controlled. Device also capable of recording pressures for sample logging and automatic leak checking.
<b>Unit Dimensions</b>	Height: 19.75 inches Width: 8 inches Depth 18.5 inches
<b>Operating System</b>	PC using Windows® XP.
<b>Software</b>	Teklink® interfaced via an RS-232 connection.
<b>Operating Conditions</b>	The system is capable of operating in Lab Temperatures between 10-30°C and humidity levels between 10-90%.
<b>Corrosion</b>	The front cover is corrosion resistant to waters within a pH range of 1-10.
<b>Voltages</b>	100/115VAC 50/60Hz 10amps, 1150watts. 220/240VAC 50/60Hz, 5amps, 1150watts.
<b>Weight</b>	32 lbs.

## Automated Solutions



### AQUATek 70

Waters-only autosampler

A fast, reliable and robust autosampler.

### SOLATek 72

Multi-matrix Autosampler

The SOLATek 72 is a soil and water purge and trap autosampler.

