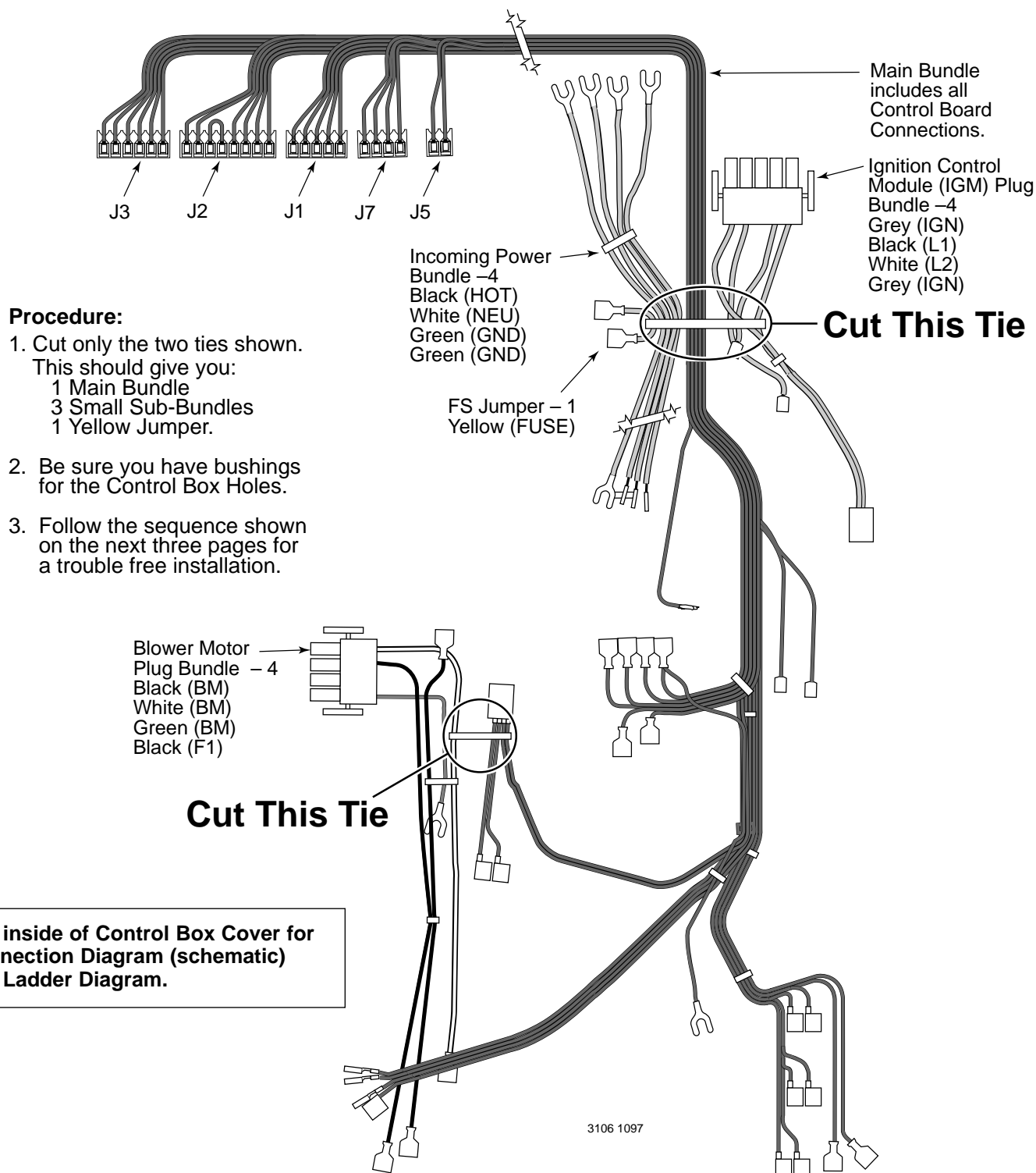


# Wiring Harness Connection Instructions

## READ ME FIRST!



### Sta-Rite Pool/Spa Group

293 Wright Street, Delavan, WI 53115

North America: 800-752-0183, FAX 800-582-2217

International: 262-728-5551, FAX: 262-728-4461, TELEX: ITT 4970245

www.sta-ritepool.com

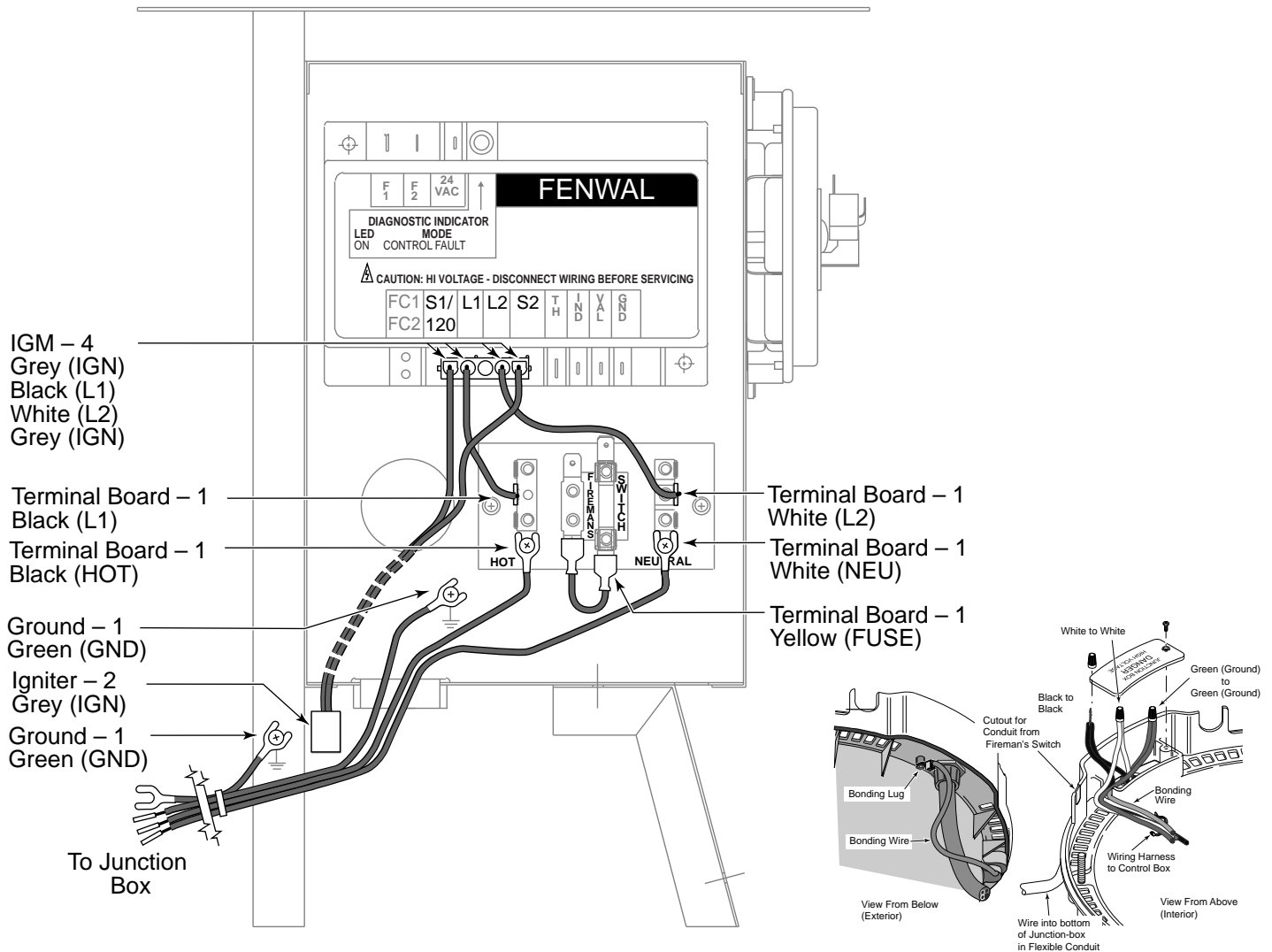
Union City, TN • Delavan, WI • Mississauga, Ont. • Murrieta, CA

Printed in U.S.A. © 2000, Sta-Rite Industries, Inc.

S439 (Rev. 7/5/00)

# Wiring Harness Connection Instructions

## Step 1



## Wiring Procedure

All Wire Ends and Terminals are marked. Match the marks.

### 1A: Ignition Control Module (IGM) Plug Bundle:

Plug into IGM Board connector. Run L1 and L2 to Terminal Board and 2 Grey IGN's out back of Control Box to Igniter as shown.

### 1B: Incoming Power Bundle:

A. Connect Ground outside Control Box under screw-head.

B. Run HOT, NEU, and GND up to Terminal Board as shown; fasten under screwheads. Use a bushing in hole in bottom of Control Box.

C. Run other ends of bundle out bottom of Control Box to Junction-Box; hook behind uprights in Bottom Enclosure.

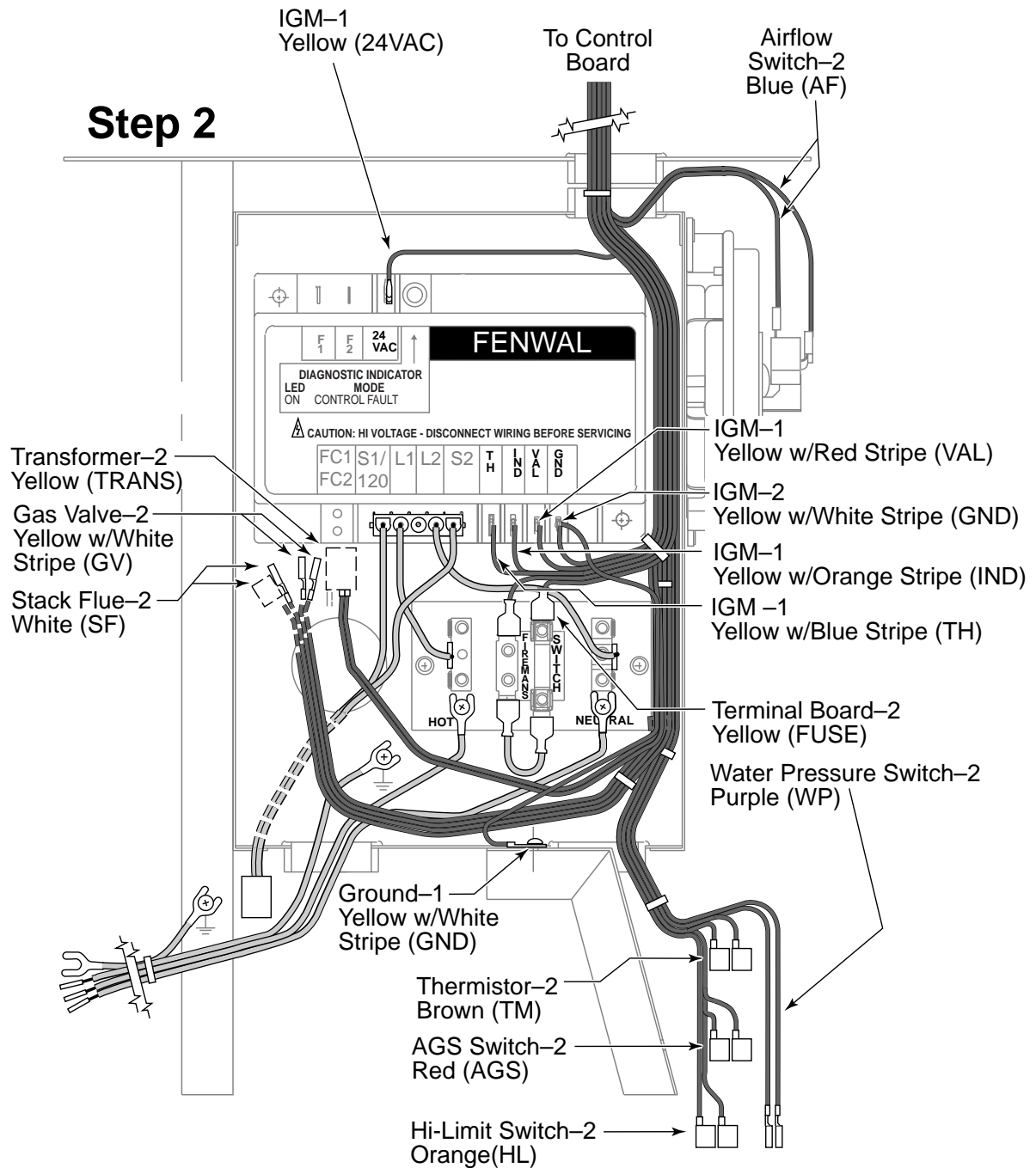
D. Fasten Wire Bundle with a wire tie.

E. Trim excess from wire ends in Junction-Box.

**⚠ WARNING** **Hazardous voltage. Can kill, burn, or shock.** This heater control system uses both 110 volt AC and 24 volt AC. Take all normal precautions for the voltages involved.

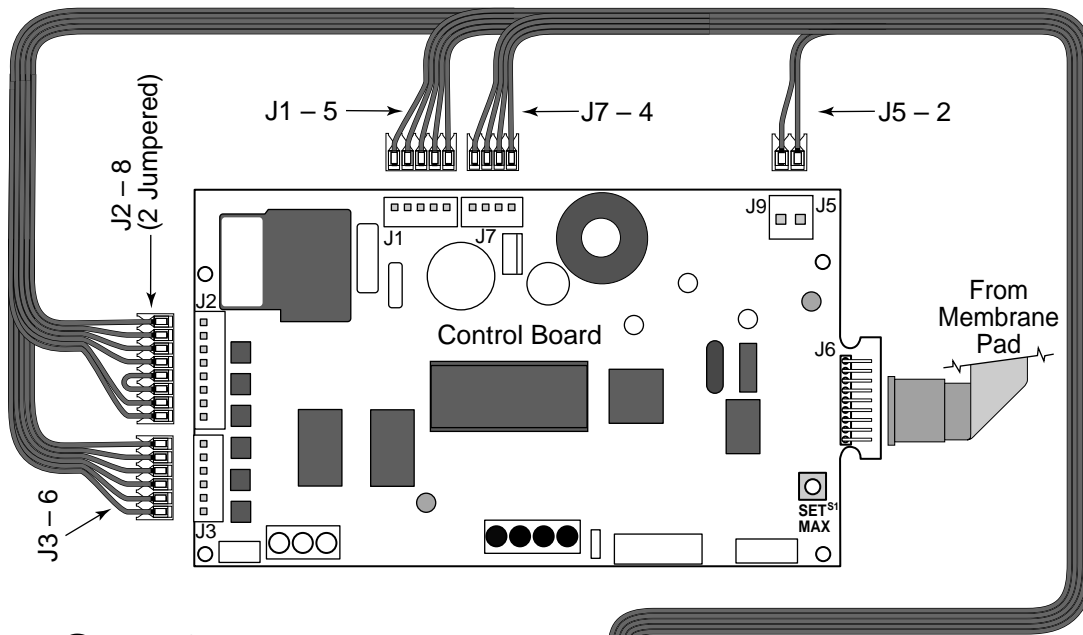
Disconnect power from heater before attempting to service, repair, or rewire the electrical system.

Only trained, qualified service technicians should attempt to service, repair, or rewire the electrical system of this heater.

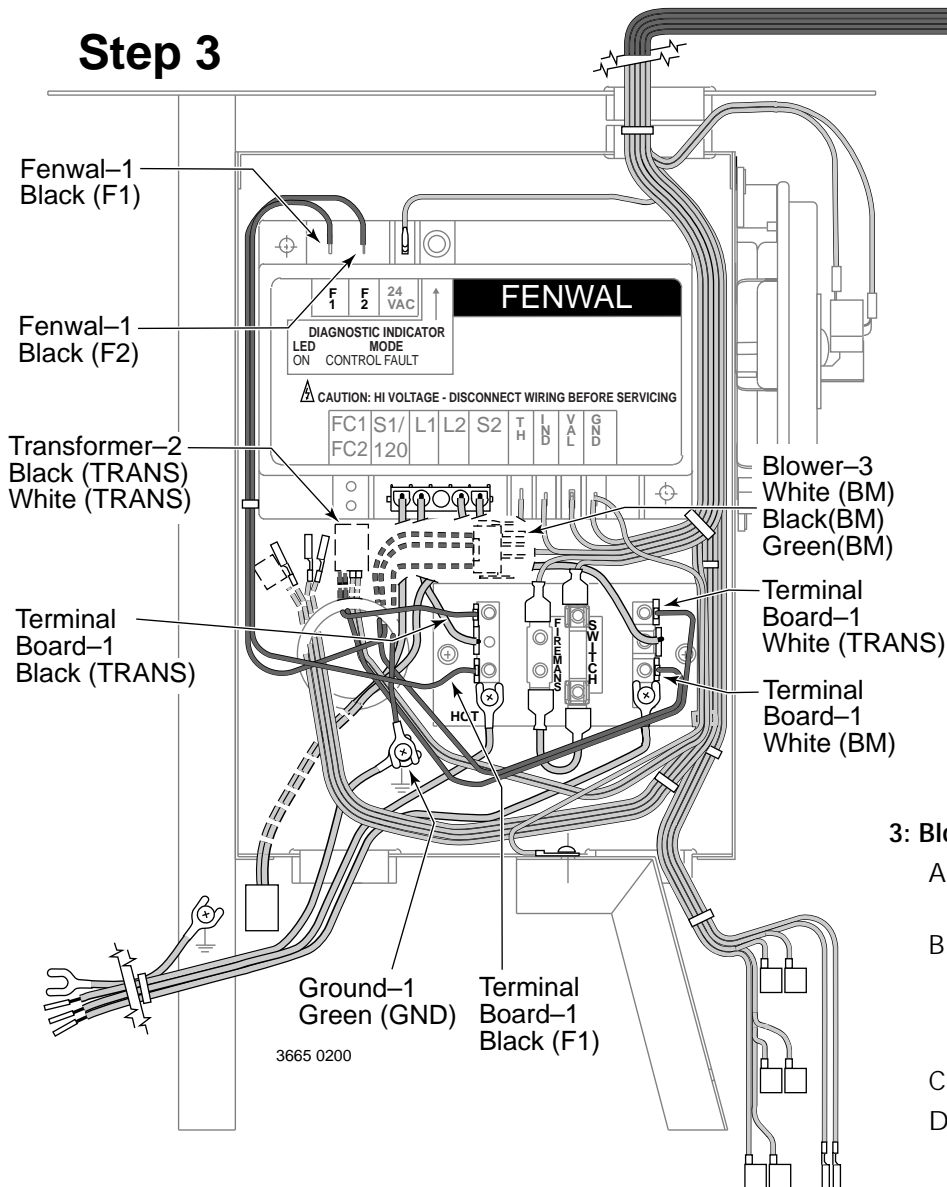


## 2. Main Bundle:

- Stuff into slot in top plate and down into Control Box, Control Board ends up.
- Add bushing to Control Box and Top Plate.
- Make connections as shown above. Don't do Control Board connections yet.
- Thread Sub-harness (TM, AGS, HL, WP,) down through bottom of Control Box and out to AGS, Thermistor, Water Pressure Switch, etc.
- Thread Yellow TRANS, Yellow GV, and White SF out through the hole on the back of the control box and connect as shown.



### Step 3



#### 3: Blower Motor Bundle:

- Connect Blower Motor Bundle as shown above.
- Attach plugs to control board as shown. Be sure to observe keying and do not force any connections.
- Check all connections.
- Connect power and run heater through one full cycle to verify correct connections.