

Contents

Sony Ericsson K630i

Getting started 5

Assembly 5

Turning on the phone 6

Help in your phone 7

Charging the battery 7

Phone overview 8

Menu overview 10

Navigation 12

File manager 13

Phone language 15

Entering text 15

Calling 16

Making and receiving calls 16

Contacts 18

Call list 22

Speed dial 23

Voicemail 23

Voice control 23

Diverting calls 25

More than one call 26

Two voice lines 27

My numbers 27

Accept calls 28

Restricted dialling 28

Fixed dialling 28

Call time and cost 29

Tone signals 29

Notepad 29

Messaging 30

Text messages 30

Picture messages 31

Message options 32

Templates 33

Voice messages 33

Email 34

My friends 35

Area and cell information 37

Imaging 37

Camera and video recorder 37

Using the camera 37

Camera icons and settings 38

Camera shortcuts 39

Transferring pictures 39

Camera printing 40

Pictures	40	Synchronizing	56
PhotoDJ™ and VideoDJ™	41	Update service	58
Themes	42	More features	59
Entertainment	42	Alarms	59
Stereo portable handsfree	42	Calendar	59
Music and video players	42	Tasks	61
Transferring music from a computer	43	Notes	62
TrackID™	45	Timer, stopwatch and calculator ...	62
Radio	46	Code memo	63
PlayNow™	46	Profiles	64
Ringtones and melodies	47	Time and date	64
MusicDJ™	48	Locks	64
Sound recorder	48	Troubleshooting	66
Games	49	Common questions	66
Applications	49	Error messages	68
Connectivity	50	Important information	70
Settings	50	Guidelines for Safe and Efficient Use	72
Phone name	50	End User Licence Agreement	76
Using the Internet	50	Limited Warranty	77
Web feeds	52	FCC Statement	79
Bluetooth™ wireless technology	52	Declaration of Conformity	79
Using the USB cable	54	Index	80

Sony Ericsson K630i

UMTS 2100 GSM 900/1800/1900

This User guide is published by Sony Ericsson Mobile Communications AB or its local affiliated company, without any warranty. Improvements and changes to this User guide necessitated by typographical errors, inaccuracies of current information, or improvements to programs and/or equipment, may be made by Sony Ericsson Mobile Communications AB or its local affiliated company at any time and without notice. Such changes will, however, be incorporated into new editions of this User guide.

All rights reserved.

©Sony Ericsson Mobile Communications AB, 2007

Publication number: 1201-1521.1

Please note:

Some of the services in this User guide are not supported by all networks. *This also applies to the GSM International Emergency Number 112.*

Please contact your network operator or service provider if you are in doubt whether you can use a particular service or not.

Please read the *Guidelines for safe and efficient use* and the *Limited warranty* chapters before you use your mobile phone.

Your mobile phone has the capability to download, store and forward additional content, e.g. ringtones. The use of such content may be restricted or prohibited by rights of third parties, including but not limited to restriction under applicable copyright laws. You, and not Sony Ericsson, are entirely responsible for additional content that you download to or forward from your mobile phone. Prior to your use of any additional content, please verify that your intended use is properly licensed or is otherwise authorized. Sony Ericsson does not guarantee the accuracy, integrity or quality of any additional content or any other third party content. Under no

circumstances will Sony Ericsson be liable in any way for your improper use of additional content or other third party content.

Bluetooth™ is a trademark or registered trademark of Bluetooth SIG Inc.

The liquid identity logo, PlayNow, MusicDJ, PhotoDJ, TrackID and VideoDJ are trademarks or registered trademarks of Sony Ericsson Mobile Communications AB.

Sony, Memory Stick Micro™ and M2™ are trademarks or registered trademarks of Sony Corporation.

Ericsson is a trademark or registered trademark of Telefonaktiebolaget LM Ericsson.

Adobe® Photoshop® Album Starter Edition is a registered trademark of Adobe Systems Incorporated.

ActiveSync, Microsoft, Windows, PowerPoint, Outlook and Vista are trademarks or registered trademarks of Microsoft Corporation in the US and other countries.

T9™ Text Input is a trademark or a registered trademark of Tegic Communications. T9™ Text Input is licensed under one or more of the following: U.S. Pat. Nos. 5,818,437, 5,953,541, 5,187,480, 5,945,928, and 6,011,554; Canadian Pat. No. 1,331,057, United Kingdom Pat. No. 2238414B; Hong Kong Standard Pat. No. HK0940329; Republic of Singapore Pat. No. 51383; Euro.Pat. No. 0 842 463(96927260.8) DE/DK, FI, FR, IT, NL, PT, ES, SE, GB; and additional patents are pending worldwide.

Java and all Java based trademarks and logos are trademarks or registered trademarks of Sun Microsystems, Inc. in the U.S. and other countries.

End-user license agreement for Sun™ Java™ J2ME™.

Restrictions: Software is confidential copyrighted information of Sun and title to all copies is retained by Sun and/or its licensors. Customer shall not modify, decompile, disassemble, decrypt, extract, or otherwise reverse engineer Software. Software may not be leased, assigned, or sublicensed, in whole or in part.

Export Regulations: Software, including technical data, is subject to U.S. export control laws, including the U.S. Export Administration Act and its associated regulations, and may be subject to export or import regulations in other countries. Customer agrees to comply strictly with all such regulations and acknowledges that it has the responsibility to obtain licenses to export, re-export, or import Software. Software may not be downloaded, or otherwise exported or re-exported (i) into, or to a national or resident of, Cuba, Iraq, Iran, North Korea, Libya, Sudan, Syria (as such listing may be revised from time to time) or any country to which the U.S. has embargoed goods; or (ii) to anyone on the U.S. Treasury Department's list of Specially Designated Nations or the U.S. Commerce Department's Table of Denial Orders.

Restricted Rights: Use, duplication or disclosure by the United States government is subject to the restrictions as set forth in the Rights in Technical Data and Computer Software Clauses in DFARS 252.227-7013(c) (1) (ii) and FAR 52.227-19(c) (2) as applicable.

Other product and company names mentioned herein may be the trademarks of their respective owners. Any rights not expressly granted herein are reserved. All illustrations are for illustration only and may not accurately depict the actual phone.

Instruction symbols

These symbols appear in the User guide.



Note



Tip



Warning



A service or function is network- or subscription-dependent. Contact your network operator for details.



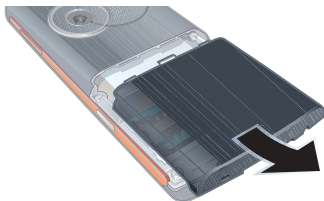
Use a selection or navigation key to scroll and select. See *Navigation* on page 12.

Getting started

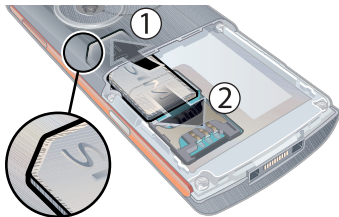
Assembly

Before you start using your phone, you need to insert a SIM card and the battery.

To insert the SIM card

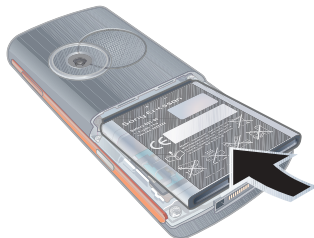


- 1 Remove the battery cover.

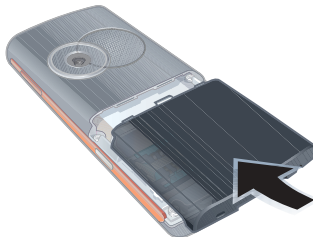


- 2 Slide the SIM card forward (1), and then backwards under the holder (2) - with the gold-coloured contacts facing down.

To insert the battery



- 1 Insert the battery with the label side up and the connectors facing each other.



- 2 Close and slide the battery cover into place.

Turning on the phone

To turn on the phone



- 1 Press and hold down ①.
- 2 Select a mode:
 - **Normal** – full functionality.
 - **Flight mode** – limited functionality.
- 3 Enter your SIM card PIN, if requested and select **OK**.
- 4 Select a language.
- 5 Select **Continue** > **Yes** to use the setup wizard while settings are downloaded.

💡 If you want to correct a mistake when you enter your PIN, press **(C)**.

SIM card

The SIM (Subscriber Identity Module) card, which you get from your network operator, contains information about

your subscription. Always turn off your phone and detach the charger before you insert or remove the SIM card.

💡 You can save contacts on the SIM card before you remove it from your phone. See *To copy names and numbers to the SIM card* on page 20.

PIN

You may need a PIN (Personal Identification Number) to activate the services in your phone. Your PIN is supplied by your network operator. Each PIN digit appears as *, unless it starts with emergency number digits, for example, 112 or 911. You can see and call an emergency number without entering a PIN.

! If you enter the wrong PIN three times in a row, the SIM card is blocked. See *SIM card lock* on page 64.

Flight mode

In **Flight mode** the network and radio transceivers are turned off to prevent disturbance to sensitive equipment.

💡 You can use the Bluetooth™ function in *Flight mode*.



Startup screen

The startup screen appears when you turn your phone on. See *Using pictures* on page 40.

Standby

After you have turned your phone on and entered your PIN, the name of the network operator appears. This view is called standby.

Help in your phone

Help and information are available in your phone. See *Navigation* on page 12.

To use the setup wizard

- 1 From standby select **Menu** > **Settings** > the **General** tab > **Setup wizard**.
- 2 Select an option.

To view information about functions

- Scroll to a function and select **Info**, if available. In some cases, **Info** appears under **Options**.

To view the phone demonstration

- From standby select **Menu** > **Entertainment** > **Demo tour**.

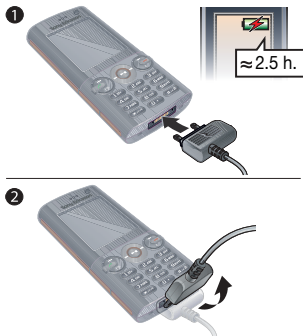
To view status information

- From standby press the volume key up.

Charging the battery

The phone battery is partly charged when you buy it.

To charge the battery



- 1 Connect the charger to the phone. It takes approximately 2.5 hours to fully charge the battery. Press a key to view the screen.
- 2 Remove the charger by tilting the plug upwards.



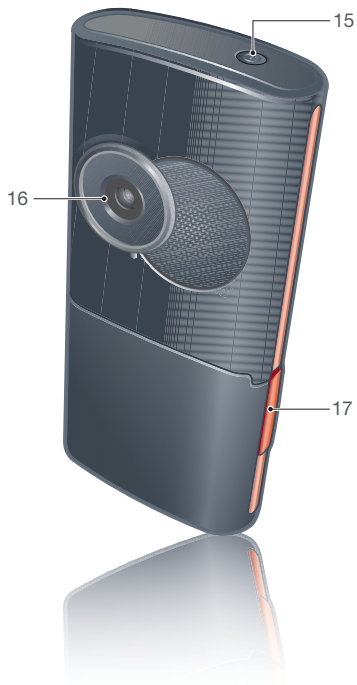
You can use your phone while it is charging. You can charge the battery at any time and for more or less than 2.5 hours. You can interrupt the charging without damaging the battery.

Phone overview

- 1 Video call camera
- 2 Ear speaker
- 3 Screen
- 4 Selection keys
- 5 Call key
- 6 Activity menu
- 7 Navigation key
- 8 Keylock key
- 9 Volume, digital zoom keys
- 10 End key
- 11 Camera key
- 12 C key (Clear)
- 13 Silent key
- 14 Connector for charger, handsfree and USB cable



- 15 On/off key
- 16 Camera lens
- 17 Memory card slot



Menu overview



PlayNow™*



Internet*



Entertainment

Online services*
Games
TrackID™
VideoDJ™
PhotoDJ™
MusicDJ™
Remote control
Record sound
Demo tour



Camera



Messaging

Write new
Inbox
Email
Web feeds
Drafts
Outbox
Sent messages
Saved messages
My friends*
Call voicemail
Templates
Manage msgs
Settings



Media



Alarms



Contacts

Myself
New contact



Radio



Calls**



All



Answered



Dialled



Missed



Organizer

File manager**
 Applications
 Video call
 Calendar
 Tasks
 Notes
 Synchronization
 Timer
 Stopwatch
 Calculator
 Code memo



Settings**



General

Profiles

Time & date

Language

Update service

Voice control

New events

Shortcuts

Flight mode

Security

Setup wizard

Accessibility*

Phone status

Master reset



Sounds & alerts

Ring volume

Ringtone

Silent mode

Increasing ring

Vibrating alert

Message alert

Key sound



Display

Wallpaper

Themes

Startup screen

Screen saver

Clock size

Brightness

Edit line names*



Calls

Speed dial

Smart search

Divert calls

Switch to line 2*

Manage calls

Video share*

Time & cost*

Show/hide my no.

Handsfree



Connectivity*

Bluetooth

USB

Phone name

Network sharing

Synchronization

Device mgmt

Mobile networks

Internet settings

Streaming settings

Message settings*

Accessories

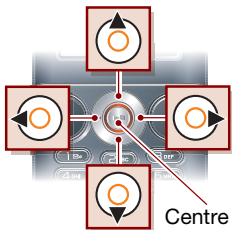
* Some menus are operator-, network- and subscription-dependent.

** You can use the navigation key to scroll between tabs in submenus. For more information, see Navigation on page 12.

Navigation

The main menus are shown as icons. Some submenus include tabs.

To navigate the phone menus



Centre navigation key

- 1 From standby select **Menu**.
- 2 Use the navigation key to move through the menus.

To scroll between the tabs

- Scroll to a tab by pressing the navigation key left or right.

To view options for an item

- Select **Options** to, for example, edit.

To return to standby

- Press **End**.

To end a function

- Press **End**.

To navigate your media

- 1 From standby select **Media**.
- 2 Use the navigation key to move up, down, left and right through the menus.

To delete items

- Press **Del** to delete items such as numbers, letters, pictures and sounds.

Shortcuts

You can use keypad shortcuts to go directly to a menu. Menu numbering starts from the top left icon and moves across and then down row by row.

To go directly to a main menu

- From standby select **Menu** and press **1** - **9**, **(*)**, **0** or **(#)**.

To use navigation key shortcuts

- From standby press **Up**, **Down**, **Left** or **Right** to go directly to a function.


To edit a navigation key shortcut

- 1 From standby select **Menu** > **Settings** > the **General** tab > **Shortcuts**.
- 2 Scroll to an option and select **Edit**.
- 3 Scroll to a menu option and select **Shortc.**

Activity menu

The activity menu gives you quick access to certain functions.

To open the activity menu

- Press .

Activity menu tabs

- **New events** – missed calls and new messages.
- **Running apps** – applications that are running in the background.
- **My shortcuts** – add your favourite functions to access them quickly.
- **Internet** – quick access to the Internet.

File manager

You can use the file manager to handle files saved in the phone memory or on a memory card.

- ! You may have to purchase a memory card separately.

Memory card

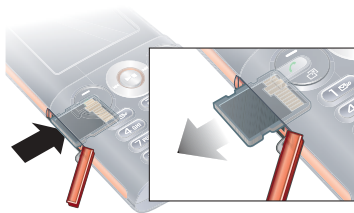
Your phone supports Memory Stick Micro™ (M2™) memory card adding more storage space to your phone. It can also be used as a portable memory card with other compatible devices.

To insert a memory card



- Open the cover and insert the memory card with the golden contacts facing up.

To remove a memory card



- Open the cover and press the edge of the memory card to release and remove it.

To view memory card options

- 1 From standby select **Menu > Organizer > File manager > the On memory card** tab.
- 2 Select **Options**.

Handling files

You can move and copy files between your phone, a computer and a memory card. Files are saved on the memory card first and then in the phone memory. Unrecognized files are saved in the **Other** folder.

You can create subfolders to move or copy files to. You can select more than one or all the files in a folder at the same time for all folders except **Games** and **Applications**.

If the memory is full, delete some content to create space.

File manager tabs

The file manager is divided into three tabs, and icons indicate where the files are saved.

- **All files** – all content in the phone memory and on a memory card
- **In phone** – all content in the phone memory
- **On memory card** – all content on a memory card

To view information about files

- 1 From standby select **Menu > Organizer > File manager**.
- 2 Find a file and select **Options > Information**.

To move a file in the file manager

- 1 From standby select **Menu > Organizer > File manager**.
- 2 Find a file and select **Options > Manage file > Move**.
- 3 Select an option.

To copy a file in the file manager

- 1 From standby select **Menu > Organizer > File manager**.
- 2 Find a file and select **Options > Manage file > Copy**.
- 3 Select an option.

To create a subfolder in the file manager

- 1 From standby select **Menu > Organizer > File manager**.
- 2 Scroll to a folder and select **Open**.
- 3 Select **Options > New folder**.
- 4 Enter a name for the folder and select **OK**.

To select more than one file in a folder

- 1 From standby select **Menu** > **Organizer** > **File manager**.
- 2 Scroll to a folder and select **Open**.
- 3 Select **Options** > **Mark** > **Mark several**.
- 4 For each file you want to mark, scroll to the file and select **Mark**.

To delete a file from the file manager

- 1 From standby select **Menu** > **Organizer** > **File manager**.
- 2 Find the file and press **(C)**.

Phone language

You can select a language to use in your phone.

To change the phone language

- 1 From standby select **Menu** > **Settings** > the **General** tab > **Language** > **Phone language**.
- 2 Select an option.

Entering text

You can use multitap text input or T9™ Text Input **T9** to enter text. The T9 Text Input method uses a built-in dictionary.

To change text input method

- When you enter text, press and hold down **(* a / #)**.

To shift between capitals and lower-case letters

- When you enter text, press **(* a / #)**.

To enter numbers

- When you enter text, press and hold down **(0 +)** – **(9)**.

To enter full stops and commas

- When you enter text, press **(1)**.

To enter text using T9™ Text Input

- 1 From standby select, for example, **Menu** > **Messaging** > **Write new** > **Text message**.
- 2 If **T9** is not displayed, press and hold down **(* a / #)** to change to T9 Text Input.

- 3 Press each key only once, even if the letter you want is not the first letter on the key. For example, to write the word “Jane”, press (5), (2), (6), (3). Write the whole word before looking at the suggestions.
- 4 Use or to view suggestions.
- 5 Press to accept a suggestion.

To enter text using multitap

- 1 From standby select, for example, **Menu** > **Messaging** > **Write new** > **Text message**.
- 2 If **T9** is displayed, press and hold down to change to multitap text input.
- 3 Press (2) – (9) repeatedly until the desired letter appears.
- 4 When a word is written, press to add a space.

To add words to the built-in dictionary

- 1 When you enter text using T9 Text Input, select **Options** > **Spell word**.
- 2 Write the word using multitap input and select **Insert**.

Calling

Making and receiving calls

You need to turn on your phone and be within range of a network.

To make a call

- 1 From standby enter a phone number with international country code and area code, if applicable.
 - 2 Press .
- See *Video call* on page 18.

You can call numbers from your contacts and call list. See *Contacts* on page 18, and *Call list* on page 22. You can also use your voice to make calls. See *Voice control* on page 23.

To make international calls

- 1 From standby press until a “+” sign appears.
- 2 Enter the country code, area code (without the first zero) and phone number.
- 3 Press .

To re-dial a number

- When **Retry?** appears select **Yes**.

Do not hold your phone to your ear when waiting. When the call connects, your phone gives a loud signal.

To answer a call

- Press .

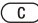
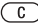
To reject a call

- Press .

To change the ear speaker volume during a call


- Press the volume key up or down.

To mute the microphone during a call



- 1 Press and hold down .
- 2 Press and hold down  again to resume.

To turn the loudspeaker on during a call

- Select **SpkrOn**.

 **Do not hold your phone to your ear when using the loudspeaker. This could damage your hearing.**

To view missed calls from standby

- Press  and scroll to the **New events** tab and select a number.
- Press  to open the call list.

Networks


Your phone switches automatically between GSM and 3G (UMTS) networks depending on availability. Some network operators allow you to switch networks manually.

To switch networks manually


- 1 From standby select **Menu > Settings > the Connectivity tab > Mobile networks > GSM/3G networks**.
- 2 Select an option.

Emergency calls

Your phone supports international emergency numbers, for example, 112 and 911. These numbers can normally be used to make emergency calls in any country, with or without the SIM card inserted, if a 3G (UMTS) or GSM network is within range.

 **In some countries, other emergency numbers may also be promoted. Your network operator may therefore have saved additional local emergency numbers on the SIM card.**


To make an emergency call

- From standby enter 112 (the international emergency number) and press .

To view your local emergency numbers

- 1 From standby select **Menu > Contacts**.
- 2 Scroll to **New contact** and select **Options > Special numbers > Emergency nos**.

Video call

See a person on the screen during calls. Both parties need a subscription that supports the 3G (UMTS) service, and you need to be within range of a 3G (UMTS) network. 3G (UMTS) service is available when  appears.

To make a video call

- 1 From standby enter a phone number with international prefix and area code, if applicable.
- 2 Select **Options** > **Make video call**.

To use the zoom with an outgoing video call

- Press  or .

To view video call options

- During the call, select **Options**.

Contacts

You can save names, phone numbers and personal information in **Contacts**. Information can be saved in the phone memory or on the SIM card.

Default contact

You can choose which contact information is shown as default. If **Phone contacts** is selected as default, your contacts show all the information saved in **Contacts**. If you select **SIM contacts** as default, your contacts show names and numbers saved on the SIM card.

To select default contacts

- 1 From standby select **Menu** > **Contacts**.
- 2 Scroll to **New contact** and select **Options** > **Advanced** > **Default contacts**.
- 3 Select an option.

Phone contacts


Phone contacts can contain names, phone numbers and personal information. They are saved in the phone memory.


To add a phone contact

- 1 From standby select **Menu** > **Contacts**.
- 2 Scroll to **New contact** and select **Add**.
- 3 Enter the name and select **OK**.
- 4 Enter the number and select **OK**.
- 5 Select a number option.
- 6 Scroll between tabs and select the fields to add information.
- 7 Select **Save**.


Calling contacts

To call a phone contact


- 1 From standby select **Menu** > **Contacts**.
- 2 Scroll to a contact and press .

 *To go directly to a contact, from standby press and hold down **(2)** – **(9)**.*

To call a SIM contact from phone contacts

- 1 From standby select **Menu** > **Contacts**.
- 2 Scroll to **New contact** and select **Options** > **SIM contacts**.
- 3 Scroll to a contact and press .

To call with Smart search

- 1 From standby press **(1)** – **(9)** to enter a contact name or a phone number. All entries which match the sequence of digits or letters are shown in a list.
- 2 Scroll to a contact or a phone number and press .


To turn Smart search on or off

- 1 From standby select **Menu** > **Settings** > the **Calls** tab > **Smart search**.
- 2 Select an option.

Editing contacts

To add information to a phone contact

- 1 From standby select **Menu** > **Contacts**.
- 2 Scroll to a contact and select **Options** > **Edit contact**.
- 3 Scroll between the tabs and select **Add**.
- 4 Select an option and an item to add.
- 5 Select **Save**.

 *If your subscription supports Calling Line Identification (CLI) service, you can assign personal ringtones to contacts.*

To edit a phone contact

- 1 From standby select **Menu** > **Contacts**.
- 2 Scroll to a contact and select **Options** > **Edit contact**.
- 3 Scroll between the tabs and select **Edit**.
- 4 Edit the information and select **Save**.

To edit a SIM contact when phone contacts is default

- 1 From standby select **Menu** > **Contacts**.
- 2 Scroll to **New contact** and select **Options** > **SIM contacts**.
- 3 Scroll to the name and number and select **Options** > **Edit contact**.
- 4 Edit the information and select **Save**.

To copy names and numbers to the SIM card

- 1 From standby select **Menu > Contacts**.
- 2 Scroll to **New contact** and select **Options > Advanced > Copy to SIM**.
- 3 Select an option.

To automatically save names and phone numbers on the SIM card

- 1 From standby select **Menu > Contacts**.
- 2 Scroll to **New contact** and select **Options > Advanced > Auto save on SIM**.
- 3 Select an option.

To save contacts on a memory card

- 1 From standby select **Menu > Contacts**.
- 2 Scroll to **New contact** and select **Options > Advanced > Back up to m.card**.

SIM contacts

SIM contacts can contain names and numbers only. They are saved on the SIM card.


To add a SIM contact

- 1 From standby select **Menu > Contacts**.
- 2 Scroll to **New contact** and select **Add**.
- 3 Enter the name and select **OK**.
- 4 Enter the number and select **OK**.

- 5 Select a number option and add more information, if available.
- 6 Select **Save**.

! *When you copy all contacts from your phone to the SIM card, all existing SIM card information is replaced.*

To call a SIM contact


- 1 From standby select **Menu > Contacts**.
- 2 Scroll to a contact and press .

To copy names and numbers to phone contacts

- 1 From standby select **Menu > Contacts**.
- 2 Scroll to **New contact** and select **Options > Advanced > Copy from SIM**.
- 3 Select an option.

Deleting contacts

To delete a contact

- 1 From standby select **Menu > Contacts**.
- 2 Scroll to a contact and press .

To delete all phone contacts

- 1 From standby select **Menu > Contacts**.
- 2 Scroll to **New contact** and select **Options > Advanced > Delete all contacts**.

Sending contacts

To send a contact

- 1 From standby select **Menu** > **Contacts**.
- 2 Scroll to a contact and select **Options** > **Send contact**.
- 3 Select a transfer method.

! *Make sure the receiving device supports the transfer method you select.*

To send all contacts

- 1 From standby select **Menu** > **Contacts**.
- 2 Scroll to **New contact** and select **Options** > **Advanced** > **Send all contacts**.
- 3 Select a transfer method.

! *Make sure the receiving device supports the transfer method you select.*

Sorting contacts

To select the sort order for contacts

- 1 From standby select **Menu** > **Contacts**.
- 2 Scroll to **New contact** and select **Options** > **Advanced** > **Sort order**.
- 3 Select an option.

Memory status

The number of contacts you can save in your phone or on the SIM card depends on available memory.

To view memory status

- 1 From standby select **Menu** > **Contacts**.
- 2 Scroll to **New contact** and select **Options** > **Advanced** > **Memory status**.

Synchronizing contacts

Contacts can be synchronized with a Microsoft Exchange Server (Microsoft® Outlook®). For more information see *Synchronizing* on page 56.

Myself

You can enter information about yourself and, for example, send your business card.

To enter Myself information

- 1 From standby select **Menu** > **Contacts**.
- 2 Scroll to **Myself** and select **Open**.
- 3 Scroll to an option and edit the information.
- 4 Select **Save**.

To add your own business card

- 1 From standby select **Menu > Contacts**.
- 2 Scroll to **Myself** and select **Open**.
- 3 Scroll to **My contact info** and select **Add > Create new**.
- 4 Scroll between tabs and select the fields to add information.
- 5 Enter the information and select **Save**.



*To enter a symbol select **Options > Add symbol > Insert**.*

To send your business card

- 1 From standby select **Menu > Contacts**.
- 2 Scroll to **Myself** and select **Open**.
- 3 Scroll to **My contact info** and select **Send**.
- 4 Select a transfer method.



Make sure the receiving device supports the transfer method you select.

Groups

You can create a group of phone numbers and email addresses from **Phone contacts** to send messages to. See *Messaging* on page 30. You can also use groups (with phone numbers) when you create accepted callers lists. See *Accept calls* on page 28.



To create a group of numbers and email addresses

- 1 From standby select **Menu > Contacts**.
- 2 Scroll to **New contact** and select **Options > Groups**.
- 3 Scroll to **New group** and select **Add**.
- 4 Enter a name for the group and select **Continue**.
- 5 Scroll to **New** and select **Add**.
- 6 For each contact phone number or email address you want to mark, scroll to it and select **Mark**.
- 7 Select **Continue > Done**.


Call list

You can view information about recent calls.

To call a number from the call list

- 1 From standby press  and scroll to a tab.
- 2 Scroll to a name or a number and press .

To add a call list number to contacts

- 1 From standby press  and scroll to a tab.
- 2 Scroll to the number and select **Save**.
- 3 Select **New contact** to create a new contact or select an existing contact to add the number to.

To clear the call list

- 1 From standby press .
- 2 Scroll to the **All** tab and select **Options** > **Delete all**.

Speed dial

Speed dialling lets you select nine contacts that you can dial quickly. The contacts can be saved in positions 1-9.


To add contacts to speed dial numbers

- 1 From standby select **Menu** > **Contacts**.
- 2 Scroll to **New contact** and select **Options** > **Speed dial**.
- 3 Scroll to a position number and select **Add**.
- 4 Select a contact.

To edit speed dial numbers

- 1 From standby select **Menu** > **Contacts**.
- 2 Scroll to **New contact** and select **Options** > **Speed dial**.
- 3 Find a position number and select **Options** > **Replace**.

To speed dial

- From standby enter the position number and press .



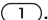
Voicemail

If your subscription includes an answering service, callers can leave a voicemail message when you cannot answer a call.

To enter your voicemail number

- 1 From standby select **Menu** > **Messaging** > **Settings** > **Voicemail number**.
- 2 Enter the number and select **OK**.

To call your voicemail service

- From standby press and hold down .

Voice control

By creating voice commands you can:

- Voice dial – call someone by saying their name.
- Activate voice dialling by saying a “magic word”.
- Answer and reject calls when you use a handsfree.

To record a voice command using voice dialling

- 1 From standby select **Menu** > **Settings** > the **General** tab > **Voice control** > **Voice dialling** > **Activate**.
- 2 Select **Yes** > **New voice comm.** and select a contact. If the contact has more than one number, select the number to add the voice command to.

- 3 Record a voice command such as “John mobile”.
- 4 Follow the instructions that appear. Wait for the tone and say the command to record. The voice command is played back to you.
- 5 If the recording sounds OK, select **Yes**. If not, select **No** and repeat steps 3 and 4.

! *Voice commands are saved in the phone memory only. They cannot be used in another phone.*

To re-record a voice command

- 1 From standby select **Menu > Settings > the General tab > Voice control > Voice dialling > Edit names**.
- 2 Scroll to a command and select **Options > Replace voice**.
- 3 Wait for the tone and say the command.

Voice dialling

You can hear your recorded contact name when you receive a call from that contact.

To use the caller name

- 1 From standby select **Menu > Settings > the General tab > Voice control > Play caller name**.
- 2 Select an option.

To voice dial

- 1 From standby press and hold down a volume key.
- 2 Wait for the tone and say a recorded name, for example “John mobile”. The name is played back to you and the call is connected.

To make a call with a handsfree

- From standby press the handsfree key.

The magic word

You can record and use a voice command as a magic word to activate voice dialling without pressing any keys. Your handsfree must be connected to your phone when using the magic word.


! *You should choose a long, unusual word or phrase that can easily be distinguished from ordinary background speech. Bluetooth handsfree does not support this feature.*

To activate and record the magic word

- 1 From standby select **Menu > Settings > the General tab > Voice control > Magic word > Activate**.
- 2 Follow the instructions that appear and select **Continue**. Wait for the tone and say the magic word.
- 3 Select **Yes** to accept or **No** for a new recording.

- 4 Follow the instructions that appear and select **Continue**.
- 5 Select where your magic word is to be activated.

To make a call using the magic word

- 1 In standby make sure  is visible.
- 2 Say the magic word.
- 3 Wait for the tone and say a voice command.

Voice answering

When you use a handsfree, you can answer or reject incoming calls with your voice.

To activate voice answering and record voice answer commands

- 1 From standby select **Menu** > **Settings** > the **General** tab > **Voice control** > **Voice answer** > **Activate**.
- 2 Follow the instructions that appear and select **Continue**. Wait for the tone and say “Answer”, or another word.
- 3 Select **Yes** to accept or **No** for a new recording.
- 4 Follow the instructions that appear and select **Continue**. Wait for the tone and say “Busy”, or another word.
- 5 Select **Yes** to accept or **No** for a new recording.

- 6 Follow the instructions that appear and select **Continue**.
- 7 Select where your voice answering is to be activated.

To answer a call using voice commands

- Say “Answer”.

To reject a call using voice commands

- Say “Busy”.

To edit your voice commands

- 1 From standby select **Menu** > **Contacts**.
- 2 Find a contact and select **Options** > **Edit contact**.
- 3 Select the voice command to edit.



Diverting calls

You can divert calls, for example, to an answering service.



*When **Restrict calls** is used, some divert call options are not available. See **Restricted dialling** on page 28.*

Divert call options

Standard options are:

- **Divert always** – divert all your calls.
- **When busy** – if a call is ongoing.
- **Not reachable** – if your phone is turned off or unreachable.
- **No reply** – if a call is not answered in a specified time.

To divert calls

- 1 From standby select **Menu > Settings > the Calls tab > Divert calls.**
- 2 Select a call type and a divert option.
- 3 Select **Activate.**
- 4 Enter the number to divert calls to and select **OK.**



More than one call

You can handle more than one call at a time. For example, you can put an ongoing call on hold, while you make or answer a second call. You can also switch between the two calls. You cannot answer a third call without ending one of the first two calls.

Call waiting

When call waiting is used, you hear a beep if you receive a second call.


To activate call waiting

- From standby select **Menu > Settings > the Calls tab > Manage calls > Call waiting > Activate.**


To make a second call

- 1 During the call, select **Options > Hold.** This puts the ongoing call on hold.
- 2 Enter the number to call and select **Options > Add call.**

To answer a second call

- During the call, press . This puts the ongoing call on hold.

To reject a second call

- During the call, press  and continue with the ongoing call.


To end an ongoing call and answer a second call

- During the call, select **Replace act. call.**

Handling two voice calls

You can have calls ongoing and on hold at the same time.

To switch between two calls

- During the call, press .

To join two calls

- During the call, select **Options > Join calls.**

To connect two calls

- During the call, select **Options** > **Transfer call**. You are disconnected from both calls.

To end an ongoing call and return to the call on hold

- Press  and then .

Receiving a third voice call


You cannot answer a third call without ending one of the first two calls or joining them.



Conference calls

With a conference call, you can have a joint conversation with up to five people.

To add a new participant

- 1 During the call, select **Options** > **Hold**. This puts the joined calls on hold.
- 2 Select **Options** > **Add call**.
- 3 Enter the number to call and press .
- 4 Select **Options** > **Join calls** to add the new participant.
- 5 Repeat this task to add more participants.

To release a participant

- 1 Select **Options** > **Release part**.
- 2 Select the participant to release.

To have a private conversation

- 1 During the call, select **Options** > **Talk to** and select the participant to talk to.
- 2 To resume the conference call, select **Options** > **Join calls**.

Two voice lines



If your subscription supports Alternate Line Service (ALS), you can make separate calls with different phone numbers.

To select a line for outgoing calls

- 1 From standby select **Menu** > **Settings** > the **Calls** tab.
- 2 Select an option.

To edit the name of a line

- 1 From standby select **Menu** > **Settings** > the **Calls** tab > **Edit line names**.
- 2 Select the line to edit.

My numbers

You can view, add and edit your own phone numbers.

To check your phone numbers


- 1 From standby select **Menu** > **Contacts**.
- 2 Scroll to **New contact** and select **Options** > **Special numbers** > **My numbers**.
- 3 Select an option.

Accept calls

You can choose to receive calls from certain phone numbers only.

To add numbers to the accepted callers list

- 1 From standby select **Menu** > **Settings** > the **Calls** tab > **Manage calls** > **Accept calls** > **Only from list**.
- 2 Scroll to **New** and select **Add**.
- 3 Scroll to a contact or select **Groups**.

 See *Groups* on page 22.

To accept all calls

- From standby select **Menu** > **Settings** > the **Calls** tab > **Manage calls** > **Accept calls** > **All callers**.



Restricted dialling

You can restrict outgoing and incoming calls. A password from your service provider is required.



If you divert incoming calls, you cannot use some restrict calls options.

Restrict calls options

Standard options are:

- **All outgoing** – all outgoing calls.
- **Outgoing intl** – all outgoing international calls.
- **Outg. intl roam.** – all outgoing international calls except to your home country.
- **All incoming** – all incoming calls.
- **Inc. when roaming** – all incoming calls when you are abroad.

To restrict calls

- 1 From standby select **Menu** > **Settings** > the **Calls** tab > **Manage calls** > **Restrict calls**.
- 2 Select an option.
- 3 Select **Activate**.
- 4 Enter your password and select **OK**.



Fixed dialling

Fixed dialling allows calls to be made only to certain numbers saved on the SIM card. The fixed numbers are protected by your PIN2.

Partial numbers can be saved. For example, saving 0123456 allows calls to be made to all numbers starting with 0123456.

- ! When fixed dialling is used, you cannot view or manage any phone numbers saved on the SIM card but you can still call the international emergency number, 112.

To use fixed dialling

- 1 From standby select **Menu** > **Contacts**.
- 2 Scroll to **New contact** and select **Options** > **Special numbers** > **Fixed dialling** > **Activate**.
- 3 Enter your PIN2 and select **OK**.
- 4 Select **OK** again to confirm.

To save a fixed number

- 1 From standby select **Menu** > **Contacts**.
- 2 Scroll to **New contact** and select **Options** > **Special numbers** > **Fixed dialling** > **Fixed numbers** > **New number**.
- 3 Enter the information and select **Save**.



Call time and cost

During a call, the duration of the call is shown. You can check the duration of your last call, outgoing calls and the total time of your calls.

To check the call time

- From standby select **Menu** > **Settings** > the **Calls** tab > **Time & cost** > **Call timers**.

Tone signals

You can use telephone banking services or control an answering machine with tone signals during a call.

To use tone signals

- 1 During the call, press **[0 +]** – **[9]**, **[* a/m]** or **[# _ b]** to send tones.
- 2 Press **[C]** to clear the screen.

Notepad

You can use the screen as a notepad to enter a phone number during a call.

To use the notepad

- 1 During the call, enter a phone number.
- 2 Press **[green phone icon]** to call the number.



Showing or hiding your phone number

You can select to show or hide your phone number when you make a call.

To hide your phone number

- 1 From standby select **Menu** > **Settings** > the **Calls** tab > **Show/hide my no.**
- 2 Select **Hide number**.

Messaging

Receiving and saving messages

You are notified when you receive a message. Messages are automatically saved in the phone memory. When the phone memory is full, you can delete messages or save them on a memory card or on the SIM card.

To save a message on a memory card

- From standby select **Menu** > **Messaging** > **Settings** > **General** > **Save to** > **Memory card**.

To save a message on the SIM card

- From standby select **Menu** > **Messaging** and select a folder.
- Scroll to a message and select **Options** > **Save message**.

To view a message from the inbox

- From standby select **Menu** > **Messaging** > **Inbox**.
- Scroll to the message and select **View**.

To delete a message

- From standby select **Menu** > **Messaging** and select a folder.
- Scroll to the message and press **(C)**.

Text messages

Text messages can contain simple pictures, sound effects, animations, and melodies.

Before you use messaging

You must have a service centre number. The number is supplied by your service provider and is usually saved on the SIM card. If the number to your service centre is not saved on your SIM card, you must enter the number yourself.

To enter a service centre number

- From standby select **Menu** > **Messaging** > **Settings** > **Text message** and scroll to **Service centre**. The number is shown if it is saved on the SIM card.
- If there is no number shown, select **Edit**.
- Scroll to **New ServiceCentre** and select **Add**.
- Enter the number, including the international “+” sign and country code.
- Select **Save**.

To write and send a text message

- From standby select **Menu** > **Messaging** > **Write new** > **Text message**.
- Write the message and select **Continue** > **Contacts look-up**.
- Select a recipient and select **Send**.

- ! If you send a text message to a group, you will be charged for each member. See *Groups* on page 22.

To copy and paste text in a text message

- 1 When you write the message, select **Options > Copy & paste.**
- 2 Select **Copy all** or **Mark & copy.** Scroll to and mark text in the message.
- 3 Select **Options > Copy & paste > Paste.**

To add an item to a text message

- 1 When you write the message, select **Options > Add item.**
- 2 Select an option and then an item.


To save a draft of a text message

- When you write the message, select **Back > Save message.**

To convert a text message to a picture message

- 1 When you write the message, select **Options > To picture msg.**
- 2 Continue creating a picture message. See *Picture messages* on page 31.

To call a number in a text message

- When you view the message, scroll to the phone number and press .

Long messages

The number of characters allowed in a text message depends on the language used for writing. You can send a long message by linking two or more messages.

To turn long messages on

- 1 From standby select **Menu > Messaging > Settings > Text message.**
- 2 Select **Max. msg length > Max. available.**

Picture messages

Picture messages can contain text, pictures, slides, sound recordings, video clips, signatures and attachments. You can send picture messages to a mobile phone or an email address.

Before you use picture messaging

You must set an Internet profile and the address of your message server. If no Internet profile or message server exists, you can receive all the settings automatically from your network operator or at www.sonyericsson.com/support.



To select an MMS profile

- 1 From standby select **Menu** > **Messaging** > **Settings** > **Picture message** > **MMS profile**.
- 2 Select a profile.

To set the message server address

- 1 From standby select **Menu** > **Messaging** > **Settings** > **Picture message**.
- 2 Scroll to **MMS profile** and select **Edit**.
- 3 Select **Options** > **Edit**.
- 4 Scroll to **Message server** and select **Edit**.
- 5 Enter the address and select **OK** > **Save**.

To create and send a picture message

- 1 From standby select **Menu** > **Messaging** > **Write new** > **Picture msg**.
- 2 Enter text. To add items to the message, press , scroll  and select an item.
- 3 Select **Continue** > **Contacts** look-up.
- 4 Select a recipient and select **Send**.

Receiving picture messages

You can select how to download your picture messages. Standard options when you download picture messages are:

- **Always** – automatic download.
- **Ask in roaming** – ask to download when not in home network.

- **Not in roaming** – do not download when not in home network.
- **Always ask** – ask to download.
- **Off** – new messages appear in the **Inbox**.

To set automatic download

- 1 From standby select **Menu** > **Messaging** > **Settings** > **Picture message** > **Auto download**.
- 2 Select an option.

To save an item in a picture message

- When you view a picture message select **Options** > **Save items** and select an item.

Message options

You can set standard options for all messages or choose specific settings each time you send a message.

To set text message options

- 1 From standby select **Menu** > **Messaging** > **Settings** > **Text message**.
- 2 Scroll to an option and select **Edit**.

To set picture message options

- 1 From standby select **Menu** > **Messaging** > **Settings** > **Picture message**.
- 2 Scroll to an option and select **Edit**.

To set message options for a specific message

- 1 When the message is ready and a recipient is selected, select **Options** > **Advanced**.
- 2 Scroll to an option and select **Edit**.

Templates

If you often use the same phrases and pictures in a message, you can save the message as a template.



To add a text message template

- 1 From standby select **Menu** > **Messaging** > **Templates** > **New template** > **Text**.
- 2 Insert text or select **Options** to add items. Select **OK**.
- 3 Enter a title and select **OK**.

To use a picture message template

- 1 From standby select **Menu** > **Messaging** > **Templates**.
- 2 Scroll to a template and select **Use**.
- 3 When the message is ready, select **Continue** > **Contacts look-up**.
- 4 Select a recipient and select **Send**.

To add a picture message template

- 1 From standby select **Menu** > **Messaging** > **Templates** > **New template** > **Picture msg**.
- 2 Enter text. To add items to the message, press , scroll  and select an item.
- 3 Select **Save**, enter a title and select **OK**.

To save a message as a template

- 1 From standby select **Menu** > **Messaging** > **Inbox**.
- 2 Scroll to the message and select **Options** > **Save as template**.



Voice messages

You can send and receive a sound recording as a voice message.



The sender and recipient must have a subscription supporting picture messaging.

To record and send a voice message

- 1 From standby select **Menu** > **Messaging** > **Write new** > **Voice message**.
- 2 Record the message and select **Stop** > **Send** > **Contacts look-up**.
- 3 Select a recipient and select **Send**.



Email

You can use standard email functions and your computer email address in your phone.

Before you use email

You can use the setup wizard to check if settings are available for your email account or you can enter them manually. You can also receive settings at www.sonyericsson.com/support.

To create an email account

- 1 From standby select **Menu** > **Messaging** > **Email** > **Accounts**.
- 2 Scroll to **New account** and select **Add**.



If you enter settings manually, you can contact your email provider for more information. An email provider could be the company that supplied your email address.

To write and send an email message

- 1 From standby select **Menu** > **Messaging** > **Email** > **Write new**.
- 2 Select **Add** > **Enter email addr**. Enter the email address and select **OK**.
- 3 To enter more recipients, select **Edit**. Scroll to an option and select **Add** > **Enter email addr**. Enter the email address and select **OK**. When you are ready, select **Done**.

- 4 Scroll to **Subject**:. Select **Edit** and enter a subject.
- 5 Scroll to **Text**:. Select **Edit** and enter the text.
- 6 Scroll to **Attachments**:. Select **Add** and select a file to attach.
- 7 Select **Continue** > **Send**.

To receive and read an email message

- 1 From standby select **Menu** > **Messaging** > **Email** > **Inbox** > **Options** > **Snd&rec**.
- 2 Scroll to the message and select **View**.

To save an email message

- 1 From standby select **Menu** > **Messaging** > **Email** > **Inbox**.
- 2 Scroll to the message and select **Options** > **Save message**.

To reply to an email message

- 1 From standby select **Menu** > **Messaging** > **Email** > **Inbox**.
- 2 Scroll to the message and select **Options** > **Reply**.
- 3 Write the reply and select **OK**.
- 4 Select **Continue** > **Send**.

To view an attachment in an email message

- When you view the message, select **Options** > **Attachments** > **View**.

To save an attachment in an email message

- When you view the message, select **Options > Attachments > View > Save.**

Synchronizing email

Email can be synchronized with a Microsoft Exchange Server (Microsoft® Outlook®). For more information see *Synchronizing* on page 56.

Active email account

If you have several email accounts, you can change which one is active.

To change the active email account

- 1 From standby select **Menu > Messaging > Email > Accounts.**
- 2 Select an account.

To delete an email (POP3)

- 1 From standby select **Menu > Messaging > Email > Inbox.**
- 2 Scroll to the message and select **Options > Mark for deletion.**

- ! *Marked emails will be deleted when you next connect to your server.*

To delete an email (IMAP4)

- 1 From standby select **Menu > Messaging > Email > Inbox.**
- 2 Scroll to the message and select **Options > Mark for deletion.**
- 3 Select **Options > Clear inbox.**

- ! *Marked email messages will be deleted in the phone and on the server.*

Push email

You can receive notification in your phone from your email server that you have new email messages.

To turn on push email notification

- From standby select **Menu > Messaging > Email > Settings > Push email.**

My friends

You can connect and log in to the My friends server to communicate online with chat messages.

Before you use My friends

If no settings exist in your phone, you need to enter server settings. Your service provider can provide standard settings information such as:

- Username
- Password
- Server address
- Internet profile

To enter My friends server settings

- 1 From standby select **Menu** > **Messaging** > **My friends** > **Config**.
- 2 Scroll to a setting and select **Add**.

To edit My friends settings

- 1 From standby select **Menu** > **Messaging** > **My friends**.
- 2 Select **Options** > **Settings**.
- 3 Scroll to the settings you wish to change and select **Edit**.

To log in to the My friends server

- From standby select **Menu** > **Messaging** > **My friends** > **Log in**.

To log out of the My friends server

- Select **Options** > **Log out**.

To add a chat contact

- 1 From standby select **Menu** > **Messaging** > **My friends** > the **Contacts** tab.
- 2 Select **Options** > **Add contact**.

To send a chat message

- 1 From standby select **Menu** > **Messaging** > **My friends** > the **Contacts** tab.
- 2 Scroll to a contact and select **Chat**.
- 3 Write the message and select **Send**.

Status

You can show your status, for example, **Happy** or **Busy**, to your contacts only. You can also show your status to all users on the My friends server.

To show my status

- 1 From standby select **Menu** > **Messaging** > **My friends** > **Options** > **Settings** > **Show my status**.
- 2 Select an option.

To update your own status

- 1 From standby select **Menu** > **Messaging** > **My friends** > the **My Status** tab.
- 2 Edit the information.

Chat group

A chat group can be started by your service provider, by an individual My friends user or by yourself. You can save chat groups by saving a chat invitation or by searching for a specific chat group.

To create a chat group

- 1 From standby select **Menu** > **Messaging** > **My friends** > the **Chat groups** tab.
- 2 Select **Options** > **Add chat group** > **New chat group**.
- 3 Select who to invite from your contacts list and select **Continue**.
- 4 Enter a short invitation text and select **Continue** > **Send**.

To add a chat group

- 1 From standby select **Menu > Messaging > My friends > the Chat groups tab > Options > Add chat group.**
- 2 Select an option.

! *Conversation history is saved between log out and when you log in again to let you return to chat messages from previous conversations.*

To save a conversation

- 1 From standby select **Menu > Messaging > My friends > the Conversations tab.**
- 2 Scroll to a conversation and select **Options > Advanced > Save conv.**

To view a saved conversation

- 1 From standby select **Menu > Messaging > My friends > the Conversations tab.**
- 2 Select **Options > Saved conv.**



Area and cell information

Area and cell information are text messages, for example, local traffic reports that are sent to subscribers within a certain network area.

To turn area information on

- 1 From standby select **Menu > Messaging > Settings > Area info.**
- 2 Scroll to **Reception** and select **Edit > On.**

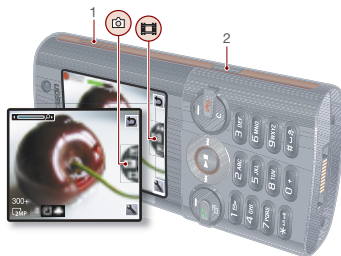
Imaging

Camera and video recorder

You can take pictures and record video clips to view, save or send.

Viewfinder and camera keys


The screen is your viewfinder when you use the camera.







-
- | | |
|---|----------------------------|
| 1 | Zoom in or out |
| 2 | Take pictures/Record video |
-

Using the camera


To activate the camera

- From standby, press and hold down .





To take a picture

- 1 Activate the camera and press  or  to scroll to .
- 2 Press  to take a picture.
- 3 The picture is automatically saved on the memory card.




 *Do not record with a strong light source in the background. Use a support or the self-timer to avoid a blurred picture.*

To record a video clip

- 1 Activate the camera and press  or  to scroll to .
- 2 Press  to start recording.



To stop recording

- 1 Press .
- 2 The video clip is automatically saved on the memory card.






To use zoom

- Press the volume key up or down.





To adjust brightness

- Press  or .

To view pictures and video clips

- 1 Activate the camera and press  or  to select view. 
- 2 To view your pictures and video clips, press  or .


To improve a picture with Photo fix

- 1 Activate the camera and press  or  to scroll to .
- 2 Select  > **Settings**.
- 3 Make sure **Review** is set to **On**.
- 4 Take a picture.
- 5 During review, select **Options** > **Photo fix**.

Camera icons and settings

Icons on the screen inform what the current setting is. More camera settings are available in **Settings**.


To change settings

- Activate the camera and select .

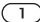
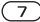
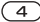

To view information about settings

- Scroll to a setting and select .

To change setup

- 1 Activate the camera and select .
- 2 Select **Settings**.

Camera shortcuts

Key	Shortcut
	Camera: Shoot mode Video: Video size
	Night mode
	Self-timer
	Camera key guide

Transferring pictures

Transfer pictures to and from your computer

You can use Bluetooth™ wireless technology and the USB cable to transfer pictures and video clips between your computer and phone. For more information, see *Bluetooth™ wireless technology* on page 52 and *Using the USB cable* on page 54.

You can view, enhance and organize your pictures and video clips on your computer by installing the *Adobe™ Photoshop™ Album Starter Edition* or the *Sony Ericsson Media Manager*. These are included on the CD that comes with your phone and are available for download at www.sonyericsson.com/support.

Picture blog

A picture blog is a personal Web page. If your subscription supports this service, you can send pictures to a blog.

! *Web services may require a separate license agreement between you and the service provider. Additional regulations and charges may apply. Contact your service provider.*

To send camera pictures to a blog

- 1 From standby select **Media** and scroll to **Photo** > **Camera album**.
- 2 Scroll to a month and a picture. Select **View**.
- 3 Select **Options** > **Send** > **To blog**.
- 4 Add title and text.
- 5 Select **OK** > **Publish**.

To go to a blog address from contacts

- 1 From standby select **Menu** > **Contacts**.
- 2 Scroll to a contact.
- 3 Scroll to a Web address and select **Go to**.

To send a picture or video clip

- 1 From standby select **Media**.
- 2 Scroll to an item and select **Options** > **Send**.
- 3 Select a transfer method.

- ! *Make sure the receiving device supports the transfer method you select.*

To receive a picture or video clip

- Follow the instructions that appear.

Camera printing

You can print camera pictures using the USB cable connected to a compatible printer.

- 💡 *You can also print using a Bluetooth compatible printer.*

To print camera pictures using the USB cable

- 1 From standby select **Media** and scroll to **Photo** > **Camera album**.
- 2 Scroll to a month and a picture.
- 3 Select **Options** > **Print**.
- 4 Select an option.
- 5 Connect the USB cable to the phone.
- 6 Connect the USB cable to the printer.
- 7 Wait for feedback in the phone and select **OK**.
- 8 Enter printer settings, if required and select **Print**.

- 💡 *You should disconnect and re-connect the USB cable if there is a printer error.*

Pictures

You can view, add, edit or delete pictures in **Media**.

Using pictures

You can add a picture to a contact, use it during phone startup, as a wallpaper in standby or as a screen saver.

To use pictures

- 1 From standby select **Media** and scroll to **Photo** > **Camera album**.
- 2 Scroll to a month and a picture. Select **View**.
- 3 Select **Options** > **Use as**.
- 4 Select an option.




To view pictures in a slide show

- 1 From standby select **Media** and scroll to **Photo** > **Camera album**.
- 2 Scroll to a month and a picture. Select **View**.
- 3 Select **Options** > **Slide show**.
- 4 Select a mood.


Photo tags

You can tag pictures to categorize them.

To tag pictures

- 1 From standby select **Media** and scroll to **Photo > Camera album**.
- 2 Scroll to a month and a picture. Select **View**.
- 3 Press  and scroll to a tag.
- 4 Press the centre navigation key option.
- 5 For each picture you want to tag, use  or  to scroll to the picture and press the centre navigation key.

To create a new photo tag

- 1 From standby select **Media** and scroll to **Photo > Camera album**.
- 2 Scroll to a month and a picture. Select **View**.
- 3 Press  and select **Options > New tag**.
- 4 Enter a name and select **OK**.
- 5 Select an icon.
- 6 Press the centre navigation key to tag the picture.

PhotoDJ™ and VideoDJ™

You can edit pictures and video clips.

To edit and save a picture

- 1 From standby select **Media** and scroll to **Photo > Camera album**.
- 2 Scroll to a month and a picture. Select **View**.
- 3 Select **Options > Edit in PhotoDJ™**.
- 4 Edit the picture.
- 5 Select **Options > Save**.

To edit and save a video clip

- 1 From standby select **Menu > Organizer > File manager > Videos**.
- 2 Scroll to a video clip and select **Options > VideoDJ™**.
- 3 Edit the video clip.
- 4 Select **Options > Save**.

To trim a video clip

- 1 From standby select **Menu > Organizer > File manager > Videos**.
- 2 Scroll to a video clip and select **Options > VideoDJ™ > Edit > Trim**.
- 3 Select **Set** to set the starting point and select **Start**.
- 4 Select **Set** to set the ending point and select **End**.
- 5 Select **Trim > Options > Save**.

Themes

You can change the appearance of the screen through items such as colours and wallpaper. You can also create new themes and download them. For more information, go to www.sonyericsson.com/support.

To set a theme

- 1 From standby select **Menu** > **Organizer** > **File manager**.
- 2 Scroll to **Themes** and select **Open**.
- 3 Scroll to a theme and select **Set**.

Entertainment

💡 *To navigate your media see Navigation on page 12.*

Stereo portable handsfree



To use the handsfree

- Connect the portable handsfree. Music stops when you receive a call and resumes when the call has ended.

Music and video players

To play music

- 1 From standby select **Media** and scroll to **Music**.
- 2 Scroll to a title and select **Play**.

To play videos

- 1 From standby select **Media** and scroll to **Video**.
- 2 Scroll to a title and select **Play**.

Music and video controls

To stop playing music

- Press the centre navigation key.



To resume playing music

- Press the centre navigation key.



To change the volume

- When you listen to music, press the volume keys up or down.

To move between tracks

- When you listen to music, press  or .

To fast forward and rewind

- When you listen to music, press and hold down  or .


To return to the player menus

- Select **Back**.

To return to the players

- Select **Options** > **Resume**.

To exit the player menus

- Press and hold down .

To send music

- 1 From standby select **Media** and scroll to **Music**.
- 2 Scroll to a title and select **Options** > **Send**.
- 3 Select a transfer method.

- ! *Make sure the receiving device supports the transfer method you select.*

To receive music

- Follow the instructions that appear.

Transferring music from a computer

With *Sony Ericsson Media Manager*, included on the CD with your phone, you can transfer music from CDs, your computer or that you have purchased to the phone memory or a memory card.

- 💡 *Sony Ericsson Media Manager software is also available for download at www.sonyericsson.com/support.*

Before you use Media Manager

You need one of these operating systems to use *Media Manager* on your computer:

- Windows Vista™ (32 bit and 64 bit versions of: Ultimate, Enterprise, Business, Home Premium, Home Basic)
- Windows XP (Pro or Home)

To install Media Manager

- 1 Turn on your computer and insert the CD. The CD starts automatically and the installation window opens.
- 2 Select a language and click **OK**.
- 3 Click *Install Sony Ericsson Media Manager* and follow the instructions.

To use Media Manager

- 1 Connect the phone to a computer with the USB cable that came with the phone.
- 2 **Computer:** *Start/Programs/Sony Ericsson/Media Manager*.
- 3 **Phone:** Select **Mass storage**. The phone will shut down in this mode but will restart again when it is disconnected from the USB cable.

! Do not remove the USB cable from your phone or computer during transfer, as this may corrupt the memory card or the phone memory.

- 4 For safe disconnection of the USB cable in mass storage mode, right-click the removable disk icon in *Windows Explorer* and select *Eject*. See *Using the USB cable* on page 54.

For details on transferring music, refer to *Media Manager Help*. Click (?) in the top right corner of the *Media Manager* window.

Browsing files

Music and video files are saved and categorized.

- **Artists** – list tracks you have transferred using Media Manager.
- **Albums** – list music tracks by album in your phone and on a memory card.
- **Tracks** – list all music tracks in your phone and on a memory card.
- **Audio books** – list audio books you have transferred from your computer.
- **Podcasts** – list all podcasts you have transferred from your computer.
- **Playlists** – create own lists of tracks.
- **Video** – list all video clips in your phone or on a memory card.

Playlists

You can create playlists to organize files. You can sort the files by artist or title. Files can be added to more than one playlist.

Deleting a playlist, or a file from a playlist, does not delete the file from the memory, just the reference to the file.

To create a playlist

- 1 From standby select **Media** and scroll to **Music > Playlists**.
- 2 Scroll to **New playlist** and select **Add**.
- 3 Enter a name and select **OK**.
- 4 Scroll to a track and select **Mark**.
- 5 Select **Add** to add the track to the playlist.

To add files to a playlist

- 1 From standby select **Media** and scroll to **Music > Playlists**.
- 2 Select a playlist.
- 3 Scroll to **Add music > Add**.
- 4 Scroll to a track and select **Mark**.
- 5 Select **Add** to add the track to the playlist.

To remove tracks from a playlist

- 1 From standby select **Media** and scroll to **Music > Playlists**.
- 2 Select a playlist.
- 3 Scroll to the track and press **(C)**.

To delete a playlist

- 1 From standby select **Media** and scroll to **Music > Playlists**.
- 2 Scroll to a playlist and press **(C)**.

To view information about a track

- Scroll to a track and select **Options > Information**.

Online music and video clips

You can view video clips and listen to music by streaming them to your phone from the Internet. If settings are not already in your phone, see *Settings* on page 50. For more information, contact your network operator or go to www.sonyericsson.com/support.

To select a data account for streaming

- 1 From standby select **Menu > Settings > the Connectivity tab > Streaming settings**.
- 2 Select the data account to use.

To stream music and video clips

- 1 From standby select **Menu > Internet**.
- 2 Select **> Options > Go to > Bookmarks**.
- 3 Select a link to stream from.

TrackID™

TrackID™ is a free music recognition service. Search for song titles, artists and album names.

To search for song information

- When you hear a song through a loudspeaker, from standby select **Menu > Entertainment > TrackID™**.
- When the radio is playing select **Options > TrackID™**.

Radio

- ! Do not use your phone as a radio in places where this is prohibited.

To listen to the radio

- 1 Connect the handsfree to the phone.
- 2 From standby select **Menu** > **Radio**.



To change the volume

- When the radio is playing, press the volume keys up or down.



To automatically search for channels

- When the radio is playing, select **Search**.

To manually search for channels

- When the radio is playing, press  or .

To switch between preset channels

- When the radio is playing, press  or .

Saving channels

You can save up to 20 preset channels.



To save channels

- When you have found a radio channel select **Options** > **Save**.


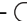
To select saved channels

- 1 From standby select **Menu** > **Radio** > **Options** > **Channels**.
- 2 Select a radio channel.

To save channels in positions 1 to 10

- When you have found a radio channel, press and hold down  - .

To select channels saved in positions 1 to 10

- When the radio is playing, press  - .



PlayNow™

You can listen to music before you purchase and download it to your phone.

- ! This service is not available in all countries. In some countries you can purchase music from some of the world's top musical artists.

Before you use PlayNow™

You must have the required settings in your phone. See *Settings* on page 50.

To listen to PlayNow™ music

- 1 From standby select **Menu** > **PlayNow™**.
- 2 Select music from a list.

Downloading from PlayNow™

The price appears when you select to download and save a music file. Your phone bill or prepay card is debited when a purchase is accepted.

To download a music file

When you have listened to a music file preview, you can agree to accept the conditions.



- 1 Select **Yes** to download.
- 2 A text message is sent to confirm payment and the file is made available to download.

Ringtones and melodies

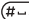
To set a ringtone

- 1 From standby select **Menu** > **Settings** > the **Sounds & alerts** tab > **Ringtone**.
- 2 Find and select a ringtone.

To set the ringtone volume

- 1 From standby select **Menu** > **Settings** > the **Sounds & alerts** tab > **Ring volume**.
- 2 To change the volume, press  or .
- 3 Select **Save**.

To turn the ringtone off

- From standby press and hold down .

- ! All signals except the alarm signal are affected.

To set the vibrating alert

- 1 From standby select **Menu** > **Settings** > the **Sounds & alerts** tab > **Vibrating alert**.
- 2 Select an option.


To send a ringtone

- 1 From standby select **Menu** > **Organizer** > **File manager**.
- 2 Scroll to **Music** and select **Open**.
- 3 Scroll to a ringtone and select **Options** > **Send**.
- 4 Select a transfer method.

- ! Make sure the receiving device supports the transfer method you select.

To receive a ringtone





- Follow the instructions that appear.

- ! You are not allowed to exchange some copyright-protected material. A protected file has a  icon.

MusicDJ™

You can compose and edit your own melodies to use as ringtones. A melody consists of four types of tracks – **Drums**, **Basses**, **Chords**, and **Accents**. A track contains a number of music blocks. The blocks consist of pre-arranged sounds with different characteristics. The blocks are grouped into **Intro**, **Verse**, **Chorus**, and **Break**. You compose a melody by adding music blocks to the tracks.

To compose a melody

- 1 From standby select **Menu** > **Entertainment** > **MusicDJ™**.
- 2 Select to **Insert**, **Copy** or **Paste** blocks.
- 3 Use , ,  or  to scroll between the blocks.
- 4 Select **Options** > **Save melody**.

To edit a melody

- 1 From standby select **Menu** > **Organizer** > **File manager** > **Music**.
- 2 Scroll to a melody and select **Options** > **Edit**.
- 3 Edit the melody and select **Options** > **Save melody**.

To send a melody

- 1 From standby select **Menu** > **Organizer** > **File manager**.
- 2 Scroll to **Music** and select **Open**.

- 3 Find a melody and select **Options** > **Send**.
- 4 Select a transfer method.

- ! *Make sure the receiving device supports the transfer method you select.*

To receive a melody

- Follow the instructions that appear.
- ! *You cannot send a polyphonic melody or MP3 file in a text message.*

Sound recorder

You can record a voice memo or a call. Recorded sounds can also be set as ringtones.

- ! *In some countries or states it is required by law that you inform the other person before recording the call.*

To record a sound

- From standby select **Menu** > **Entertainment** > **Record sound**.

To listen to a recording

- 1 From standby select **Menu** > **Organizer** > **File manager**.
- 2 Scroll to **Music** and select **Open**.
- 3 Scroll to a recording and select **Play**.

Games

Your phone contains several games. You can also download games. Help texts are available for most games.

To start a game

- 1 From standby select **Menu** > **Entertainment** > **Games**.
- 2 Select a game.

To end a game

- Press .

Gaming control

The keys on your phone can be used for different gaming control functions.

Applications

You can download and run Java applications. You can also view information or set different permissions.

Before you use Java™ applications

If settings are not already entered in your phone, see *Settings* on page 50.

To select a Java application

- 1 From standby select **Menu** > **Organizer** > **Applications**.
- 2 Select an application.

To view information about a Java application

- 1 From standby select **Menu** > **Organizer** > **Applications**.
- 2 Scroll to an application and select **Options** > **Information**.

To set permissions for a Java application

- 1 From standby select **Menu** > **Organizer** > **Applications**.
- 2 Scroll to an application and select **Options** > **Permissions**.
- 3 Set permissions.

Java application screen size

Some Java applications are designed for a specific screen size. For more information, contact the application vendor.

To set the screen size for a Java application

- 1 From standby select **Menu** > **Organizer** > **Applications**.
- 2 Scroll to an application and select **Options** > **Screen size**.
- 3 Select an option.

Internet profiles for Java applications

Some Java applications need to connect to the Internet to receive information. Most Java applications use the same Internet settings as your Web browser.

Connectivity


Settings

Before you synchronize with an Internet service, use the Internet, PlayNow™, My friends, Java, picture messaging, email and picture blog you need to have settings in your phone.

If settings are not already entered, you can download settings using the setup wizard or by going to www.sonyericsson.com/support.

To download settings using the setup wizard

- 1 From standby select **Menu** > **Settings** > the **General** tab > **Setup wizard** > **Settings download**.
- 2 Follow the instructions that appear.

 Contact your network operator or service provider for more information.

To download settings using a computer

- 1 Go to www.sonyericsson.com/support.
- 2 Follow the instructions on the screen.

Phone name

You can enter a name for your phone to be shown to other devices.

To enter a phone name

- 1 From standby select **Menu** > **Settings** > the **Connectivity** tab > **Phone name**.
- 2 Enter the phone name and select **OK**.

Using the Internet

You can use the Internet to access online services.


To start browsing

- 1 From standby select **Menu** > **Internet**.
- 2 Select **Options** > **Go to**.
- 3 Select an option.

To exit the browser

- When you browse the Internet, select **Options** > **Exit browser**.

To make a call while browsing

- When you browse the Internet press .

To save an item from a Web page

- 1 When you browse the Internet, select an item.
- 2 Select **Options** > **Tools** and save the item.

To find text on a Web page

- 1 When you browse the Internet, select **Options > Tools > Find on page**.
- 2 Enter text and press **Find**.

To send a link

- 1 When you browse the Internet, select **Options > Tools > Send link**.
- 2 Select an option.

Using bookmarks

You can create and edit bookmarks as quick links to your favourite Web pages.

To create a bookmark

- 1 When you browse the Internet, select **Options > Tools > Add bookmark**.
- 2 Enter a title and an address. Select **Save**.

To edit a bookmark

- 1 From standby select **Menu > Internet > Options > Go to > Bookmarks**.
- 2 Scroll to a bookmark and select **Options > Edit**.
- 3 Edit the bookmark and select **Save**.

To select a bookmark

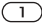




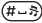
- 1 From standby select **Menu > Internet**.
- 2 Select **Options > Go to > Bookmarks**.
- 3 Scroll to a bookmark and select **Go to**.

Internet keypad shortcuts

You can use the keypad to go directly to an Internet browser function.

To select Internet keypad shortcuts

- 1 From standby select **Menu > Internet**.
- 2 Select **Options > Advanced > Keypad mode > Shortcuts**.

Key	Shortcut
	Bookmarks
 - 	Enter text to Enter address , Search Internet or search in Bookmarks .
	Fullscreen or Landscape or Normal screen .
	Zoom
	Pan & zoom (when Smart-Fit is off).


Internet security and certificates

Your phone supports secure browsing. Certain Internet services, such as banking, require certificates in your phone. Your phone may already contain certificates when you buy it or you can download new certificates.

To view certificates in the phone

- From standby select **Menu > Settings > the General tab > Security > Certificates**.

Web feeds

You can receive frequently updated content, such as podcasts or news headlines, as Web feeds. You can add feeds for a page, if it has the  icon.

To add new feeds for a Web page

- When you browse a page on the Internet that has Web feeds, select **Options > Web feeds**.

To create a new Web feed

- 1 From standby select **Menu > Messaging > Web feeds > Options > New feed**.
- 2 Enter the address and select **Go to**.

To set options for Web feeds

- 1 From standby select **Menu > Messaging > Web feeds**.
- 2 Scroll to a Web feed and select **Options**.
- 3 Select an option.

Bluetooth™ wireless technology

The Bluetooth function makes wireless connection to other Bluetooth devices possible. You can, for example:

- Connect to handsfree devices.
- Connect to several devices at the same time.

- Connect to computers and access the Internet.
- Exchange items and play multiplayer games.



We recommend a range within 10 metres (33 feet), with no solid objects in between, for Bluetooth communication.

Before you use Bluetooth wireless technology

You must turn on the Bluetooth function to communicate with other devices. You must also pair your phone with other Bluetooth devices.

To turn the Bluetooth function on

- From standby select **Menu > Settings > the Connectivity tab > Bluetooth > Turn on**.



Make sure that the device you want to pair your phone with has the Bluetooth function activated and is made visible.

To pair the phone with a device

- 1 From standby select **Menu > Settings > the Connectivity tab > Bluetooth > My devices**.
- 2 Scroll to **New device** and select **Add** to search for available devices.
- 3 Select a device.
- 4 Enter a passcode, if required.

To allow connection to the phone

- 1 From standby select **Menu > Settings**
> the **Connectivity** tab > **Bluetooth**
> **My devices**.
- 2 Select a device from the list.
- 3 Select **Options > Allow connection**.

To edit the device list

- 1 From standby select **Menu > Settings**
> the **Connectivity** tab > **Bluetooth**
> **My devices**.
- 2 Select a device from the list.
- 3 Select **Options**.
- 4 Select an option.

To pair the phone with a Bluetooth handsfree for the first time

- 1 From standby select **Menu > Settings**
> the **Connectivity** tab > **Bluetooth**
> **Handsfree**.
- 2 Select **Yes**.
- 3 Enter a passcode, if required.

To pair the phone with more than one Bluetooth handsfree

- 1 From standby select **Menu > Settings**
> the **Connectivity** tab > **Bluetooth**
> **Handsfree > My handsfree > New handsfree**.
- 2 Scroll to a device and select **Add**.

Power saving

You can save battery power with the Power save function. You can only connect with a single Bluetooth device. You must turn this function off if you want to connect with more than one Bluetooth device at the same time.

To turn powersave on

- From standby select **Menu > Settings**
> the **Connectivity** tab > **Bluetooth**
> **Powersave > On**.

Visibility

If you want other Bluetooth devices to be able to discover your phone, you can choose to make your phone visible.

To show your phone

- From standby select **Menu > Settings**
> the **Connectivity** tab > **Bluetooth**
> **Visibility > Show phone**.

To receive an item

- 1 From standby select **Menu > Settings**
> the **Connectivity** tab > **Bluetooth**
> **Visibility > Show phone**.
- 2 When you receive an item, follow the instructions that appear.

Transferring sound to and from a Bluetooth handsfree

You can transfer the sound to and from a Bluetooth handsfree using a phone key or the handsfree key.

To transfer sound

- 1 From standby select **Menu** > **Settings** > the **Connectivity** tab > **Bluetooth** > **Handsfree** > **Incoming call**.
- 2 Select an option. **In phone** transfers sound to the phone. **In handsfree** transfers sound to the handsfree.

To transfer sound during a call

- 1 During a call, select **Sound** > **Transfer sound**.
- 2 Select from the list.

Remote control

You can use your phone as a remote control device. You can control computer applications such as a media player or Microsoft® PowerPoint® presentations or devices with Bluetooth support.

To select remote control

- 1 From standby select **Menu** > **Entertainment** > **Remote control**.
- 2 Select an application to use and the device to connect to.

File transfer

You can synchronize and transfer files using Bluetooth wireless technology. See *Synchronization using a computer* on page 56.

Using the USB cable

You can connect your phone to a computer with the USB cable to transfer files using **Mass storage** or **Media transfer**. You can also synchronize, transfer files and use your phone as a modem using **Phone mode**. For more information go to the Getting started section at www.sonyericsson.com/support.

Before you use the USB cable

You need one of these operating systems to transfer files using a USB cable:

- Windows® 2000
- Windows XP (Pro and Home)
- Windows Vista (32 bit and 64 bit versions of: Ultimate, Enterprise, Business, Home Premium, Home Basic)

Media transfer and Mass storage

You can drag and drop files between your phone or memory card and a computer in *Microsoft Windows Explorer*.

- ! Only use a USB cable supported by your phone. Do not remove the USB cable from your phone or computer during file transfer as this may corrupt the phone memory or the memory card.

To use media transfer and mass storage mode



- 💡 Before transferring files you must install the Sony Ericsson PC Suite software on your computer. See *To install the Sony Ericsson PC Suite* on page 56.

- 1 Connect the USB cable to the phone and the computer.
- 2 **Phone:** Select **Mass storage**. The phone will shut down in this mode and restart when disconnected from the USB cable.

- 3 **Phone:** Select **Media transfer** and the phone will remain activated during file transfer.
- 4 **Computer:** Wait until the phone memory and memory card appear as external disks in *Windows Explorer*.
- 5 Drag and drop selected files between the phone and the computer.

To disconnect the USB cable safely

- 1 Right-click the removable disk icon in *Windows Explorer*.
- 2 Select *Eject*.
- 3 Disconnect the USB cable when the following message is shown in the phone: **Mass storage session ended. It is now safe to remove the USB cable.**

Phone mode

Before synchronizing or using your phone as a modem you must install the Sony Ericsson PC Suite software on your computer. See *To install the Sony Ericsson PC Suite* on page 56.

To use phone mode

- 1 **Computer:** Start *PC Suite* from *Start/Programs/Sony Ericsson/PC Suite*.
- 2 Connect the USB cable to the phone and the computer.
- 3 **Phone:** Select **Phone mode**.

- 4 **Computer:** When you are notified that the *Sony Ericsson PC Suite* has found your phone, you can start using the phone mode applications.



For usage details, see the Sony Ericsson PC Suite Help section once the software has been installed on your computer.

Synchronizing

You can use the USB cable or Bluetooth wireless technology to synchronize phone contacts, appointments, bookmarks, tasks and notes with a computer program such as Microsoft Outlook. You can also synchronize with an Internet service using SyncML or a Microsoft® Exchange Server using Exchange ActiveSync. For more information go to the Getting started section at www.sonyericsson.com/support.



Use only one of the synchronization methods at a time with your phone.

Synchronization using a computer

Before synchronizing you need to install the *Sony Ericsson PC Suite* from the CD included with your phone. The software includes help information. You can also go to www.sonyericsson.com/support to download the software.

You need one of these operating systems to use the PC Suite on your computer:

- Windows XP (Pro and Home)
- Windows Vista (32 bit and 64 bit versions of: Ultimate, Enterprise, Business, Home, Premium, Home Basic)

To install the Sony Ericsson PC Suite

- 1 Turn on your computer and insert the CD. The CD starts automatically and the installation window opens.
- 2 Select a language and click **OK**.
- 3 Click *Install Sony Ericsson PC suite* and follow the instructions on the screen.

Synchronization using an Internet service

You can synchronize online using an Internet service with your phone. If Internet settings are not in your phone, see *Settings* on page 50.

Before you start to synchronize

You must enter settings for SyncML synchronization and register a synchronization account online with a service provider. Settings that are required are:

- **Server address** – server URL
- **Database name** – database to synchronize with

To enter settings for SyncML

- 1 From standby select **Menu** > **Organizer** > **Synchronization**.
- 2 Scroll to **New account** and select **Add** > **SyncML**.
- 3 Enter a name for the new account and select **Continue**.
- 4 Scroll to **Server address**. Enter the required information and select **OK**.
- 5 Enter **Username** and **Password**, if required.
- 6 Scroll to the **Applications** tab to mark which applications you would like to synchronize.
- 7 Scroll to the **App settings** tab and select an application.
- 8 Select **Database name** and enter the required information.
- 9 Scroll to the **Advanced** tab to enter additional settings for synchronizing.
- 10 Select **Save**.

To delete an account

- 1 From standby select **Menu** > **Organizer** > **Synchronization**.
- 2 Scroll to an account and select **Options** > **Delete**.

To start synchronization

- 1 From standby select **Menu** > **Organizer** > **Synchronization**.
- 2 Scroll to an account and select **Start**.

Synchronization using a Microsoft® Exchange Server

You can access and synchronize corporate exchange information such as email, contacts and calendar entries with a Microsoft® Exchange Server using your phone.



For more information on synchronization settings, contact your IT administrator.

Before you start to synchronize

You must enter settings for Exchange ActiveSync to access a Microsoft Exchange Server. Settings that are required are:

- **Server address** – server URL
- **Domain** – server domain
- **Username** – account username
- **Password** – account password

To enter settings for Exchange ActiveSync

- 1 From standby select **Menu** > **Organizer** > **Synchronization**.
- 2 Scroll to **New account** > **Add** > **Exchange ActiveSync**.
- 3 Enter a name for the new account and select **Continue**.
- 4 Enter the required settings.
- 5 Scroll between the tabs to enter additional settings.
- 6 Select **Save**.

To start synchronization

- 1 From standby select **Menu** > **Organizer** > **Synchronization**.
- 2 Scroll to an account and select **Start**.



Update service

You can update your phone with the latest software. You do not lose personal or phone information.

There are two ways to update your phone:

- Over the air using your phone.
- Using the provided USB cable and an Internet-connected computer.



Update service requires data access such as GPRS, 3G or HSDPA.

Before you use the Update service

If settings are not in your phone see **Settings** on page 50.

To view the current software in the phone

- 1 From standby select **Menu** > **Settings** > the **General** tab > **Update service**.
- 2 Select **Software version**.

To use Update service using the phone

- 1 From standby select **Menu** > **Settings** > the **General** tab > **Update service**.
- 2 Select **Search for update** and follow the instructions that appear.

To use Update service using a USB cable

- 1 Go to www.sonyericsson.com/support or click the **Sony Ericsson Update service** in the **PC Suite** software if installed on your computer. See *To install the Sony Ericsson PC Suite* on page 56.
- 2 Select a region and country.
- 3 Follow the instructions on the screen.

To set a reminder to use Update service

- 1 From standby select **Menu** > **Settings** > the **General** tab > **Update service** > **Settings** > **Reminder**.
- 2 Select an option.

More features

Alarms

You can set a sound or the radio as an alarm signal. The alarm sounds even if the phone is turned off. When the alarm sounds you can silence it for 9 minutes or turn it off.

To set the alarm

- 1 From standby select **Menu** > **Alarms**.
- 2 Scroll to an alarm and select **Edit**.
- 3 Scroll to **Time:** and select **Edit**.
- 4 Enter a time and select **OK** > **Save**.

To set the recurrent alarm

- 1 From standby select **Menu** > **Alarms**.
- 2 Scroll to an alarm and select **Edit**.
- 3 Scroll to **Recurrent:** and select **Edit**.
- 4 Scroll to a day and select **Mark**.
- 5 To select another day, scroll to the day and select **Mark**.
- 6 Select **Done** > **Save**.

To set the alarm signal

- 1 From standby select **Menu** > **Alarms**.
- 2 Scroll to an alarm and select **Edit**.
- 3 Scroll to **Alarm signal:** and select **Edit**.
- 4 Find and select an alarm signal. Select **Save**.

To silence the alarm

- When the alarm sounds, press any key.
- To repeat the alarm, select **Snooze**.

To turn off an alarm

- When the alarm sounds, select **TurnOff**.


To cancel the alarm

- 1 From standby select **Menu** > **Alarms**.
- 2 Scroll to an alarm and select **TurnOff**.

The alarm in silent mode

You can set the alarm not to sound when the phone is in silent mode.

To set an alarm to sound or not in silent mode

- 1 From standby select **Menu** > **Alarms**.
- 2 Scroll to an alarm and select **Edit**.
- 3 Scroll to the  tab.
- 4 Scroll to **Silent mode** and select **Edit**.
- 5 Select an option.

Calendar

The calendar can be synchronized with a computer calendar, with a calendar on the Web or with a Microsoft® Exchange Server (Microsoft® Outlook®). For more information see *Synchronizing* on page 56.

Default view

You can choose whether month, week or day view will appear first when you open the calendar.

To set default view

- 1 From standby select **Menu** > **Organizer** > **Calendar**.
- 2 Select **Options** > **Advanced** > **Default view**.
- 3 Select an option.

Appointments

You can add new appointments or reuse existing appointments.

To add an appointment

- 1 From standby select **Menu** > **Organizer** > **Calendar**.
- 2 Select a date.
- 3 Scroll to **New appointm.** and select **Add**.
- 4 Enter the information and confirm each entry.
- 5 Select **Save**.

To view an appointment

- 1 From standby select **Menu** > **Organizer** > **Calendar**.
- 2 Select a date.
- 3 Scroll to an appointment and select **View**.

To edit an appointment

- 1 From standby select **Menu** > **Organizer** > **Calendar**.
- 2 Select a date.
- 3 Scroll to an appointment and select **View**.
- 4 Select **Options** > **Edit**.
- 5 Edit the appointment and confirm each entry.
- 6 Select **Save**.

To send an appointment

- 1 From standby select **Menu** > **Organizer** > **Calendar**.
 - 2 Select a date.
 - 3 Scroll to an appointment and select **Options** > **Send**.
 - 4 Select a transfer method.
- ! Make sure the receiving device supports the transfer method you select.

To view a calendar week

- 1 From standby select **Menu** > **Organizer** > **Calendar**.
- 2 Select a date.
- 3 Select **Options** > **View week**.

To set when reminders should sound

- 1 From standby select **Menu > Organizer > Calendar**.
- 2 Select a date.
- 3 Select **Options > Advanced > Reminders**.
- 4 Select an option.

! A reminders option set in calendar affects a reminders option set in tasks.

Calendar shortcuts

In the calendar, there are shortcuts to different views.

Key	Shortcut
1	Back a week
4	Back a month
7	Back a year
9	Next year
C	Today's date
3	Next week
6	Next month
2	View month
5	View week
8	View day

Tasks

You can add new tasks or reuse existing tasks.

To add a task

- 1 From standby select **Menu > Organizer > Tasks**.
- 2 Scroll to **New task** and select **Add**.
- 3 Select an option.
- 4 Enter details and confirm each entry.

To view a task

- 1 From standby select **Menu > Organizer > Tasks**.
- 2 Scroll to a task and select **View**.

To reuse an existing task

- 1 From standby select **Menu > Organizer > Tasks**.
- 2 Scroll to a task and select **View**.
- 3 Select **Options > Edit**.
- 4 Edit the task and select **Continue**.
- 5 Choose to set a reminder.

To send a task

- 1 From standby select **Menu > Organizer > Tasks**.
- 2 Scroll to a task and select **Options > Send**.
- 3 Select a transfer method.

! Make sure the receiving device supports the transfer method you select.

To set when reminders should sound

- 1 From standby select **Menu** > **Organizer** > **Tasks**.
- 2 Scroll to a task and select **Options** > **Reminders**.
- 3 Select an option.

! A reminders option set in tasks affects a reminders option set in calendar.

Notes

You can make notes and save them.
You can also show a note in standby.

To add a note

- 1 From standby select **Menu** > **Organizer** > **Notes**.
- 2 Scroll to **New note** and select **Add**.
- 3 Write a note and select **Save**.

To show a note in standby

- 1 From standby select **Menu** > **Organizer** > **Notes**.
- 2 Scroll to a note and select **Options** > **Show in standby**.

To send a note

- 1 From standby select **Menu** > **Organizer** > **Notes**.
- 2 Scroll to a note and select **Options** > **Send**.
- 3 Select a transfer method.

! Make sure the receiving device supports the transfer method you select.

To use an item in a note

- 1 When you view the note, select a phone number, email or Web address.
- 2 Select **Options** > **Use**.
- 3 Select an option.

Timer, stopwatch and calculator

To use the timer

- 1 From standby select **Menu** > **Organizer** > **Timer**.
- 2 Enter the hours, minutes and seconds.
- 3 Select **Start**.

To use the stopwatch

- 1 From standby select **Menu** > **Organizer** > **Stopwatch** > **Start**.
- 2 To view a new lap time, select **Lap**.

To use the calculator

- 1 From standby select **Menu** > **Organizer** > **Calculator**.
- 2 Press \odot or \odot to select $\div \times - + . \% =$.

Code memo

You can save security codes, for example, for credit cards. You must set a passcode to open the code memo.

Checkword

The checkword confirms that you have entered the correct passcode. If the passcode is correct, the correct codes are shown. If the passcode is incorrect, the checkword and the codes shown are also incorrect.

To open code memo for the first time

- 1 From standby select **Menu** > **Organizer** > **Code memo**.
- 2 Follow the instructions that appear and select **Continue**.
- 3 Enter a passcode and select **Continue**.
- 4 Confirm the passcode and select **Continue**.
- 5 Enter a checkword and select **Done**.

To add a code

- 1 From standby select **Menu** > **Organizer** > **Code memo**.
- 2 Enter a passcode and select **Continue**.
- 3 Scroll to **New code** and select **Add**.
- 4 Enter a name associated with the code and select **Continue**.
- 5 Enter the code and select **Done**.

To change a passcode

- 1 From standby select **Menu** > **Organizer** > **Code memo**.
- 2 Enter your passcode and select **Options** > **Change passcode**.
- 3 Enter your new passcode and select **Continue**.
- 4 Re-enter the new passcode and select **Continue**.
- 5 Enter a checkword and select **Done**.

Forget your passcode?

If you forget your passcode, you must reset the code memo. This means that all entries in the code memo are deleted. The next time you enter the code memo, you must proceed as if you are opening it for the first time. See *To open code memo for the first time* on page 63.

To reset code memo

- 1 From standby select **Menu** > **Organizer** > **Code memo**.
- 2 Enter any passcode to access the code memo. The checkword and codes that are then shown are incorrect.
- 3 Select **Options** > **Reset**.
- 4 **Reset code memo?** appears.
- 5 Select **Yes**.

Profiles

Profiles automatically adapt some phone settings to different situations, for example, the ring volume may be adapted to suit a meeting or an accessory. You can reset all profiles to how they were set when you purchased your phone.

To select a profile

- 1 From standby select **Menu** > **Settings** > the **General** tab > **Profiles**.
- 2 Select a profile.

To view and edit a profile

- 1 From standby select **Menu** > **Settings** > the **General** tab > **Profiles**.
- 2 Scroll to a profile and select **Options** > **View and edit**.

! *You cannot rename the Normal profile.*

To reset all profiles

- 1 From standby select **Menu** > **Settings** > the **General** tab > **Profiles**.
- 2 Select **Options** > **Reset profiles**.

Time and date

To set the time

- 1 From standby select **Menu** > **Settings** > the **General** tab > **Time & date** > **Time**.
- 2 Enter the time and select **Save**.

To set the date

- 1 From standby select **Menu** > **Settings** > the **General** tab > **Time & date** > **Date**.
- 2 Enter the date and select **Save**.

To set the time zone

- 1 From standby select **Menu** > **Settings** > the **General** tab > **Time & date** > **My time zone**.
- 2 Select the time zone you are in by city.

! *If you select a city, My time zone also updates the time when daylight saving time changes.*

Locks

SIM card lock

This lock only protects your subscription. Your phone will work with a new SIM card. If the lock is on, you have to enter a PIN (Personal Identity Number).

If you enter your PIN incorrectly three times in a row, the SIM card is blocked and you need to enter your PUK (Personal Unblocking Key). Your PIN and PUK are supplied by your network operator.

To unblock the SIM card

- 1 When **PIN blocked** appears, enter your PUK and select **OK**.
- 2 Enter a new four-to-eight-digit PIN and select **OK**.
- 3 Re-enter the new PIN and select **OK**.

To edit the PIN

- 1 From standby select **Menu** > **Settings** > the **General** tab > **Security** > **Locks** > **SIM protection** > **Change PIN**.
- 2 Enter your PIN and select **OK**.
- 3 Enter a new four-to-eight-digit PIN and select **OK**.
- 4 Re-enter the new PIN and select **OK**.

! *If **Codes do not match** appears, you entered the new PIN incorrectly. If **Wrong PIN** appears, followed by **Old PIN**., you entered your old PIN incorrectly.*

To use the SIM card lock

- 1 From standby select **Menu** > **Settings** > the **General** tab > **Security** > **Locks** > **SIM protection** > **Protection**.
- 2 Select an option.
- 3 Enter your PIN and select **OK**.

Phone lock

You can stop unauthorized use of your phone. Change the phone lock code (0000) to any four-to-eight-digit personal code.

! *It is important that you remember your new code. If you forget it, you have to take your phone to your local Sony Ericsson retailer.*

To use the phone lock

- 1 From standby select **Menu** > **Settings** > the **General** tab > **Security** > **Locks** > **Phone protection** > **Protection**.
- 2 Select an option.
- 3 Enter the phone lock code and select **OK**.

To unlock the phone

- Enter your code and select **OK**.

To change the phone lock code

- 1 From standby select **Menu** > **Settings** > the **General** tab > **Security** > **Locks** > **Phone protection** > **Change code**.
- 2 Enter the old code and select **OK**.
- 3 Enter the new code and select **OK**.
- 4 Repeat the code and select **OK**.

Keypad lock

You can set this lock to avoid accidental dialling. Incoming calls can be answered without unlocking the keypad.

- ! Calls to the international emergency number 112 can still be made.

To use the automatic keylock

- 1 From standby select **Menu > Settings** > the **General** tab > **Security > Automatic keylock**.
- 2 Select an option.

To lock the keypad manually

- From standby press **(*) a / (Am)** and select **Lock**.

To unlock the keypad manually

- From standby press **(*) a / (Am)** and select **Unlock**.

IMEI number

Keep a copy of your IMEI (International Mobile Equipment Identity) number in case your phone is stolen.

To view your IMEI number

- From standby press **(*) a / (Am)**, **# w z**, **() +**, **6**, **(# w z)**.

Troubleshooting

Some problems will require you to call your network operator.

For more support go to www.sonyericsson.com/support.

Common questions

I have problems with memory capacity or the phone is working slowly

Restart your phone every day to free memory or do a **Master reset**.

Master reset

If you select **Reset settings**, the changes that you have made to settings will be deleted.

If you select **Reset all**, in addition to your changes to settings, all contacts, messages, personal data, and content that you have downloaded, received or edited will also be deleted.

To reset the phone

- 1 From standby select **Menu > Settings** > the **General** tab > **Master reset**.
- 2 Select an option.
- 3 Follow the instructions that appear.

I cannot charge the phone or battery capacity is low

The charger is not properly connected or the battery connection is poor. Remove the battery and clean the connectors.

The battery is worn out and needs to be replaced. See *Charging the battery* on page 7.

No battery icon appears when I start charging the phone

It may take a few minutes before the battery icon appears on the screen.

Some menu options appear in grey

A service is not activated. Contact your network operator.

I cannot use SMS/text messages on my phone


Settings are missing or incorrect. Contact your network operator to find out the correct SMS service centre setting. See *Text messages* on page 30.

I cannot use picture messages on my phone

Your subscription does not include data capability. Settings are missing or incorrect. Please contact your network operator.

See *Help in your phone* on page 7 or go to www.sonyericsson.com/support to order settings and follow the instructions on the screen. See *Settings* on page 50.

How do I turn on and off T9 Text Input when writing?

When you enter text, press and hold down . You will see **T9** at the top of the screen when T9 Text Input is activated.

How do I change phone language?

- 1 From standby select **Menu > Settings > the General tab > Language > Phone language**.
- 2 Select an option.

I cannot use the Internet

Your subscription does not include data capability. Internet settings are missing or incorrect. Please contact your network operator.

See *Help in your phone* on page 7 or go to www.sonyericsson.com/support to order Internet settings, and follow the instructions on the screen. See *Settings* on page 50.

The phone cannot be detected by other devices using Bluetooth wireless technology

You have not turned the Bluetooth function on.

Make sure that the visibility is set to **Show phone**. See *To receive an item* on page 53.

I cannot synchronize or transfer data between my phone and my computer, when using the USB cable.

The cable or software that came with your phone has not been properly installed. Go to www.sonyericsson.com/support to read Getting started guides which contain detailed installation instructions and troubleshooting guides.

Error messages

Insert SIM

There is no SIM card in your phone or you may have inserted it incorrectly.

See *Charging the battery* on page 7.

The SIM card connectors need cleaning. If the card is damaged, contact your network operator.

Insert correct SIM card

Your phone is set to work only with certain SIM cards. Check if you are using the correct operator SIM card.

Wrong PIN/Wrong PIN2

You have entered your PIN or PIN2 incorrectly.

Enter the correct PIN or PIN2 and select **Yes**. See *To insert the SIM card* on page 5.

PIN blocked/PIN2 blocked

You have entered your PIN or PIN2 code incorrectly three times in a row.

To unblock, see *SIM card lock* on page 64.

Codes do not match

Codes that you have entered do not match. When you want to change a security code, for example your PIN, you have to confirm the new code. See *SIM card lock* on page 64.

No netw. coverage

Your phone is in flight mode. See *Flight mode* on page 6.

Your phone is not receiving any network signal, or the received signal is too weak. Contact your network operator and make sure that the network has coverage where you are.

The SIM card is not working properly. Insert your SIM card in another phone. If this works, it is probably your phone that is causing the problem. Please contact the nearest Sony Ericsson service location.

Emerg. calls only

You are within range of a network, but you are not allowed to use it. However, in an emergency, some network operators allow you to call the international emergency number 112. See *Emergency calls* on page 17.

PUK blocked. Contact operator.

You entered your personal unblocking key code (PUK) incorrectly 10 times in a row.

Charging, alien battery

The battery that you are using is not a Sony Ericsson-approved battery. See *Battery* on page 73.

Important information

Sony Ericsson Consumer Web site

On www.sonyericsson.com/support is a support section where help and tips are only a few clicks away. Here you will find the latest computer software updates and tips on how to use your product more efficiently.

Service and support

From now on you will have access to a portfolio of exclusive service advantages such as:

- Global and local Web sites providing support.
- A global network of Call Centers.
- An extensive network of Sony Ericsson service partners.
- A warranty period. Learn more about the warranty conditions in this User guide.

Country

Argentina
Australia
Austria
Belgium
Brazil
Canada
Central Africa
Chile
China
Colombia
Croatia
Czech Republic
Denmark
Finland
France
Germany

Phone number

800-333-7427
1-300 650 050
0810 200245
02-7451611
4001-0444
1-866-766-9374
+27 112589023
123-0020-0656
4008100000
18009122135
062 000 000
844 550 055
33 31 28 28
09-299 2000
0 825 383 383
0180 534 2020

On www.sonyericsson.com, under the support section in the language of your choice, you will find the latest support tools and information, such as software updates, Knowledge base, phone setup and additional help when you require it. For operator-specific services and features, please contact your network operator for more information. You can also contact our Call Centers. See the phone number for the nearest Call Center in the list below. If your country/region is not represented in the list, please contact your local dealer. The phone numbers below were correct at the time of going to print. On www.sonyericsson.com you can always find the latest updates.

In the unlikely event that your product needs service please contact the dealer from whom it was purchased or one of our service partners. Save your original proof of purchase, you will need it if you need to claim warranty.

Email address

questions.AR@support.sonyericsson.com
questions.AU@support.sonyericsson.com
questions.AT@support.sonyericsson.com
questions.BE@support.sonyericsson.com
questions.BR@support.sonyericsson.com
questions.CA@support.sonyericsson.com
questions.CF@support.sonyericsson.com
questions.CL@support.sonyericsson.com
questions.CN@support.sonyericsson.com
questions.CO@support.sonyericsson.com
questions.HR@support.sonyericsson.com
questions.CZ@support.sonyericsson.com
questions.DK@support.sonyericsson.com
questions.FI@support.sonyericsson.com
questions.FR@support.sonyericsson.com
questions.DE@support.sonyericsson.com

Greece	801-11-810-810 210-89 91 919 (from mobile)	questions.GR@support.sonyericsson.com
Hong Kong	8203 8863	questions.HK@support.sonyericsson.com
Hungary	+36 1 880 4747	questions.HU@support.sonyericsson.com
India	39011111 (Add STD code when dialling from a GSM connection)	questions.IN@support.sonyericsson.com
Indonesia	021-2701388	questions.ID@support.sonyericsson.com
Ireland	1850 545 888	questions.IE@support.sonyericsson.com
Italy	06 48895206	questions.IT@support.sonyericsson.com
Lithuania	8 700 55030	questions.LT@support.sonyericsson.com
Malaysia	1-800-889900	questions.MY@support.sonyericsson.com
Mexico	01 800 000 4722	questions.MX@support.sonyericsson.com
Netherlands	0900 899 8318	questions.NL@support.sonyericsson.com
New Zealand	0800-100150	questions.NZ@support.sonyericsson.com
Norway	815 00 840	questions.NO@support.sonyericsson.com
Pakistan	111 22 55 73 Outside Karachi: (92-21) 111 22 55 73	questions.PK@support.sonyericsson.com
Philippines	02-6351860	questions.PH@support.sonyericsson.com
Poland	0 (prefix) 22 6916200	questions.PL@support.sonyericsson.com
Portugal	808 204 466	questions.PT@support.sonyericsson.com
Romania	(+4021) 401 0401	questions.RO@support.sonyericsson.com
Russia	8(495) 787 0986	questions.RU@support.sonyericsson.com
Singapore	67440733	questions.SG@support.sonyericsson.com
Slovakia	02-5443 6443	questions.SK@support.sonyericsson.com
South Africa	0861 632222	questions.ZA@support.sonyericsson.com
Spain	902 180 576	questions.ES@support.sonyericsson.com
Sweden	013-24 45 00	questions.SE@support.sonyericsson.com
Switzerland	0848 824 040	questions.CH@support.sonyericsson.com
Taiwan	02-25625511	questions.TW@support.sonyericsson.com
Thailand	02-2483030	questions.TH@support.sonyericsson.com
Turkey	0212 47 37 777	questions.TR@support.sonyericsson.com
Ukraine	(+380) 44 590 1515	questions.UA@support.sonyericsson.com
United Arab Emirates	43 919880	questions.AE@support.sonyericsson.com
United Kingdom	08705 23 7237	questions.GB@support.sonyericsson.com
United States	1-866-766-9374	questions.US@support.sonyericsson.com
Venezuela	0-800-100-2250	questions.VE@support.sonyericsson.com

Guidelines for Safe and Efficient Use

Please read this information before using your mobile phone.

These instructions are intended for your safety. Please follow these guidelines. If the product has been subject to any of the conditions listed below or you have any doubt as to its proper function make sure you have the product checked by a certified service partner before charging or using it. Failure to do so might entail a risk of product malfunction or even a potential hazard to your health.



Recommendations for safe use of product (mobile phone, battery, charger and other accessories)

- Always treat your product with care and keep it in a clean and dust-free place.
- **Warning!** May explode if disposed of in fire.
- Do not expose your product to liquid or moisture or humidity.
- Do not expose your product to extreme high or low temperatures. Do not expose the battery to temperatures above +60°C (+140°F).
- Do not expose your product to open flames or lit tobacco products.
- Do not drop, throw or try to bend your product.
- Do not paint your product.
- Do not attempt to disassemble or modify your product. Only Sony Ericsson authorised personnel should perform service.
- Do not use your product near medical equipment without requesting permission from your treating physician or authorized medical staff.



- Do not use your product when in, or around aircraft, or areas showing the sign "turn off two-way radio".
- Do not use your product in an area where a potentially explosive atmosphere exists.
- Do not place your product or install wireless equipment in the area above an air bag in your car.
- **Caution:** Cracked or broken displays may create sharp edges or splinters that could be harmful upon contact.



CHILDREN

KEEP OUT OF CHILDRENS REACH. DO NOT ALLOW CHILDREN TO PLAY WITH YOUR MOBILE PHONE OR ITS ACCESSORIES. THEY COULD HURT THEMSELVES OR OTHERS, OR COULD ACCIDENTALLY DAMAGE THE MOBILE PHONE OR ACCESSORY. YOUR MOBILE PHONE OR ITS ACCESSORY MAY CONTAIN SMALL PARTS THAT COULD BECOME DETACHED AND CREATE A CHOKING HAZARD.



Power supply (Charger)

Connect the AC power adapter only to designated power sources as marked on the product. Make sure the cord is positioned so that it will not be subjected to damage or stress. To reduce risk of electric shock, unplug the unit from any power source before attempting to clean it. The AC power adapter must not be used outdoors or in damp areas. Never alter the cord or plug. If the plug does not fit into the outlet, have a proper outlet installed by a qualified electrician.

Use only Sony Ericsson branded original chargers intended for use with your mobile phone. Other chargers may not be designed to the same safety and performance standards.

Battery

We recommend that you fully charge the battery before you use your mobile phone for the first time. A new battery or one that has not been used for a long time could have reduced capacity the first few times it is used. The battery should only be charged in temperatures between +5°C (+41°F) and +45°C (+113°F).

Use only Sony Ericsson branded original batteries intended for use with your mobile phone. Using other batteries and chargers could be dangerous.

Talk and standby times depend on several different conditions such as signal strength, operating temperature, application usage patterns, features selected and voice or data transmissions when the mobile phone is being used.

Turn off your mobile phone before removing the battery. Do not put the battery into your mouth. Battery electrolytes may be toxic if swallowed. Do not let the metal contacts on the battery touch another metal object. Doing this could short-circuit and damage the battery. Use the battery for the intended purpose only.

Personal medical devices

Mobile phones may affect the operation of pacemakers and other implanted equipment. Please avoid placing the mobile phone over the pacemaker, e.g. in your breast pocket. When using the mobile phone, use it at the ear on the opposite side of the body to the pacemaker. If a minimum distance of 15 cm (6 inches) is kept between the mobile phone and the pacemaker, the risk of interference is limited. If you have any reason to suspect that interference is taking place, immediately turn off your mobile phone. Contact your cardiologist for more information.

For other medical devices, please consult your physician and the manufacturer of the device.

Driving

Please check if local laws and regulations restrict the use of mobile phones while driving or require drivers to use handsfree solutions. We recommend that you use only Sony Ericsson handsfree solutions intended for use with your product.

Please note that because of possible interference to electronic equipment, some vehicle manufacturers forbid the use of mobile phones in their vehicles unless a handsfree kit with an external antenna has been installed.

Always pay full attention to driving and pull off the road and park before making or answering a call if driving conditions so require.

Emergency calls

Mobile phones operate using radio signals, which cannot guarantee connection in all conditions. You should therefore never rely solely upon any mobile phone for essential communications (e.g. medical emergencies).

Emergency calls may not be possible in all areas, on all cellular networks, or when certain network services and/or mobile phone features are in use. Check with your local service provider.

Antenna

This phone contains a built-in antenna. Use of antenna devices not marketed by Sony Ericsson specifically for this model could damage your mobile phone, reduce performance, and produce SAR levels above the established limits (see below).

Efficient use

Hold your mobile phone as you would any other phone. Do not cover the top of the phone when it is in use, as this affects call quality and may cause the phone to operate at a higher power level than needed, thus shortening talk and standby times.

Radio frequency (RF) exposure and Specific Absorption Rate (SAR)

Your mobile phone is a low-power radio transmitter and receiver. When it is turned on, it emits low levels of radio frequency energy (also known as radio waves or radio frequency fields).

Governments around the world have adopted comprehensive international safety guidelines, developed by scientific organizations, e.g. ICNIRP (International Commission on Non-Ionizing Radiation Protection) and IEEE (The Institute of Electrical and Electronics Engineers Inc.), through periodic and thorough evaluation of scientific studies. These guidelines establish permitted levels of radio wave exposure for the general population. The levels include a safety margin designed to assure the safety of all persons, regardless of age and health, and to account for any variations in measurements.

Specific Absorption Rate (SAR) is the unit of measurement for the amount of radio frequency energy absorbed by the body when using a mobile phone. The SAR value is determined at the highest certified power level in laboratory conditions, but the actual SAR level of the mobile phone while it is operating can be well below this value. This is because the mobile phone is designed to use the minimum power required to reach the network.

Variations in SAR below the radio frequency exposure guidelines do not mean that there are variations in safety. While there may be differences in SAR levels among mobile phones, all Sony Ericsson mobile phone models are designed to meet radio frequency exposure guidelines.

For phones sold in the US, before a phone model is available for sale to the public, it must be tested and certified by the Federal Communications Commission (FCC) that it does not exceed the limit established by the government-adopted requirement for safe exposure. The tests are performed in positions and locations (that is, at the ear and worn on the body) as required by the FCC for each model. For body-worn operation, this phone has been tested and meets FCC RF exposure guidelines when the handset is positioned a minimum of 15 mm from the body without any metal parts in the vicinity of the phone or when used with the original Sony Ericsson accessory intended for this phone and worn on the body. Use of other accessories may not ensure compliance with FCC RF exposure guidelines.

A separate leaflet with SAR information about this mobile phone model is included with the material accompanying this mobile phone. This information can also be found, together with more information on radio frequency exposure and SAR, on: www.sonyericsson.com/health.

Accessible Solutions/Special Needs

For phones sold in the US, you can use your TTY terminal with your Sony Ericsson mobile phone (with the necessary accessory). For information on Accessible Solutions for individuals with special needs call the Sony Ericsson Special Needs Center on 877 878 1996 (TTY) or 877 207 2056 (voice), or visit the Sony Ericsson Special Needs Center at www.sonyericsson-snc.com.

Disposal of old electrical and electronic equipment

This symbol indicates that all electrical and electronic equipment included shall not be treated as household waste.

Instead it shall be left at the appropriate collection point for recycling of electrical and electronic equipment. By ensuring this product is disposed of correctly, you will help prevent potential negative consequences for the environment and human health, which could otherwise be caused by inappropriate waste handling of this product. The recycling of materials will help to conserve natural resources. For more detailed information about recycling this product, please contact your local city office, your household waste disposal service or the shop where you purchased the product.



Disposing of the battery

Please check local regulations for disposal of batteries or call your local Sony Ericsson Call Centre for information.

The battery should never be placed in municipal waste. Use a battery disposal facility if available.



Memory Card

Your product is equipped with a memory card reader. Check memory card compatibility before purchase or use.

Memory cards are generally formatted prior to shipping. To reformat the memory card, use a compatible device. Do not use the standard operating system format when formatting the memory card on a PC. For details, refer to the operating instructions of the device or contact customer support.

WARNING:

If your device requires an adapter for insertion into the handset or another device, do not insert the card directly without the required adapter.

Precautions on Memory Card Use

- Do not expose the memory card to moisture.
- Do not touch terminal connections with your hand or any metal object.
- Do not strike, bend, or drop the memory card.
- Do not attempt to disassemble or modify the memory card.
- Do not use or store the memory card in humid or corrosive locations or in excessive heat such as a closed car in summer, in direct sunlight or near a heater, etc.
- Do not press or bend the end of the memory card adapter with excessive force.
- Do not let dirt, dust, or foreign objects get into the insert port of any memory card adapter.
- Check you have inserted the memory card correctly.
- Insert the memory card as far as it will go into any memory card adapter needed. The memory card may not operate properly unless fully inserted.
- We recommend that you make a backup copy of important data. We are not responsible for any loss or damage to content you store on the memory card.
- Recorded data may be damaged or lost when you remove the memory card or memory card adapter, turn off the power while formatting, reading or writing data, or use the memory card in locations subject to static electricity or high electrical field emissions.

Protection of personal information

To safeguard your privacy and prevent information being accessible to a third party, you should erase all personal data before selling or disposing of the product. To delete personal data, perform a master reset. **DELETION OF MATERIAL FROM THE PHONE MEMORY DOES NOT ENSURE THAT SAID INFORMATION CANNOT BE RECOVERED BY A SUBSEQUENT USER. SONY ERICSSON DOES NOT WARRANT AGAINST A SUBSEQUENT USER OF THE DEVICE ACCESSING YOUR INFORMATION AND DOES NOT ASSUME ANY RESPONSIBILITY FOR SUBSEQUENT DISCLOSURE OF SAID INFORMATION EVEN IF A MASTER RESET HAS BEEN PERFORMED.** If you are concerned about such potential disclosure retain your device or secure its permanent destruction.

Accessories

Sony Ericsson recommends use of Sony Ericsson original accessories for safe and efficient use of its products. Use of third-party accessories may decrease performance or pose a risk to your health or safety.

LOUDNESS WARNING:

Please adjust the audio volume cautiously when using third-party audio accessories to avoid volume levels that may be harmful to your hearing. Sony Ericsson does not test use of third-party audio accessories with this mobile phone. Sony Ericsson recommends using only Sony Ericsson original audio accessories.

End User Licence Agreement

This wireless device, including without limitation any media delivered with the device, ("Device") contains software owned by Sony Ericsson Mobile Communications AB and its affiliated companies ("Sony Ericsson") and its third party suppliers and licensors ("Software").

As user of this Device, Sony Ericsson grants you a non-exclusive, non-transferable, non-assignable license to use the Software solely in conjunction with the Device on which it is installed and/or delivered with. Nothing herein shall be construed as a sale of the Software to a user of this Device.

You shall not reproduce, modify, distribute, reverse engineer, decompile, otherwise alter or use any other means to discover the source code of the Software or any component of the Software. For avoidance of doubt, you are at all times entitled to transfer all rights and obligations to the Software to a third party, solely together with the Device with which you received the Software, provided always that such third party agrees in writing to be bound by these rules.

You are granted this license for a term of the useful life of this Device. You can terminate this license by transferring all your rights to the Device on which you have received the Software to a third party in writing. If you fail to comply with any of the terms and conditions set out in this license, it will terminate with immediate effect.

Sony Ericsson and its third party suppliers and licensors are the sole and exclusive owner of and retain all rights, title and interest in and to the Software. Sony Ericsson, and, to the extent that the Software contains material or code of a third party, such third party, shall be entitled third party beneficiaries of these terms.

The validity, construction and performance of this license shall be governed by the laws of Sweden. The foregoing shall apply to the full extent permitted by, when applicable, statutory consumer rights.

Limited Warranty

Sony Ericsson Mobile Communications AB, SE-221 88 Lund, Sweden, (Sony Ericsson) or its local affiliated company, provides this Limited Warranty for your mobile phone and original accessory delivered with your mobile phone (hereinafter referred to as "Product").

Should your Product need warranty service, please return it to the dealer from whom it was purchased, or contact your local Sony Ericsson Call Centre (national rates may apply) or visit www.sonyericsson.com to get further information.

Our warranty

Subject to the conditions of this Limited Warranty, Sony Ericsson warrants this Product to be free from defects in design, material and workmanship at the time of its original purchase by a consumer. This Limited Warranty will last for a period of one (1) year as from the original date of purchase of the Product.

What we will do

If, during the warranty period, this Product fails to operate under normal use and service, due to defects in design, materials or workmanship, Sony Ericsson authorized distributors or service partners, in the country* where you purchased the Product, will, at their option, either repair or replace the Product in accordance with the terms and conditions stipulated herein.

Sony Ericsson and its service partners reserve the right to charge a handling fee if a returned Product is found not to be under warranty according to the conditions below.

Please note that some of your personal settings, downloads and other information may be lost when your Sony Ericsson Product is repaired or replaced. At present Sony Ericsson may be prevented by applicable law, other regulation or technical restrictions from making a backup copy of certain downloads. Sony Ericsson does not take any responsibility for any lost information of any kind and will not reimburse you for any such loss. You should always make backup copies of all the information stored on your Sony Ericsson Product such as downloads, calendar and contacts before handing in your Sony Ericsson Product for repair or replacement.

Conditions

- 1 This Limited Warranty is valid only if the original proof of purchase for this Product issued by a Sony Ericsson authorized dealer specifying the date of purchase and serial number**, is presented with the Product to be repaired or replaced. Sony Ericsson reserves the right to refuse warranty service if this information has been removed or changed after the original purchase of the Product from the dealer.
- 2 If Sony Ericsson repairs or replaces the Product, the repair for the defect concerned, or the replaced Product shall be warranted for the remaining time of the original warranty period or for ninety (90) days from the date of repair, whichever is longer. Repair or replacement may involve the use of functionally equivalent reconditioned units. Replaced parts or components will become the property of Sony Ericsson.

- 3 This warranty does not cover any failure of the Product due to normal tear and wear, or due to misuse, including but not limited to use in other than the normal and customary manner, in accordance with the Sony Ericsson instructions for use and maintenance of the Product. Nor does this warranty cover any failure of the Product due to accident, software or hardware modification or adjustment, acts of God or damage resulting from liquid.

A rechargeable battery can be charged and discharged more than a hundred times. However, it will eventually wear out – this is not a defect and corresponds to normal wear and tear. When the talk-time or standby time is noticeably shorter, it is time to replace your battery. Sony Ericsson recommends that you use only batteries and chargers approved by Sony Ericsson.

Minor variations in display brightness and colour may occur between the phones. There may be tiny bright or dark dots on the display. These are called defective pixels and occur when individual dots have malfunctioned and can not be adjusted. Two defective pixels are deemed acceptable.

Minor variations in camera image appearance may occur between phones. This is nothing uncommon and is not regarded as a defective camera module.

- 4 Since the cellular system on which the Product is to operate is provided by a carrier independent from Sony Ericsson, Sony Ericsson will not be responsible for the operation, availability, coverage, services or range of that system.

- 5 This warranty does not cover Product failures caused by installations, modifications, or repair or opening of the Product performed by a non-Sony Ericsson authorised person.

- 6 The warranty does not cover Product failures which have been caused by use of accessories or other peripheral devices which are not Sony Ericsson branded original accessories intended for use with the Product.

- 7 Tampering with any of the seals on the Product will void the warranty.

- 8 THERE ARE NO EXPRESS WARRANTIES, WHETHER WRITTEN OR ORAL, OTHER THAN THIS PRINTED LIMITED WARRANTY. ALL IMPLIED WARRANTIES, INCLUDING WITHOUT LIMITATION THE IMPLIED WARRANTIES OF MERCHANTABILITY OR FITNESS FOR A PARTICULAR PURPOSE, ARE LIMITED TO THE DURATION OF THIS LIMITED WARRANTY. IN NO EVENT SHALL SONY ERICSSON OR ITS LICENSORS BE LIABLE FOR INCIDENTAL OR CONSEQUENTIAL DAMAGES OF ANY NATURE WHATSOEVER, INCLUDING BUT NOT LIMITED TO LOST PROFITS OR COMMERCIAL LOSS; TO THE FULL EXTENT THOSE DAMAGES CAN BE DISCLAIMED BY LAW.

Some countries/states do not allow the exclusion or limitation of incidental or consequential damages, or limitation of the duration of implied warranties, so the preceding limitations or exclusions may not apply to you.

The warranty provided does not affect the consumer's statutory rights under applicable legislation in force, nor the consumer's rights against the dealer arising from their sales / purchase contract.

*Geographical scope of the warranty

If you have purchased your Product in a country member of the European Economic Area (EEA) or in Switzerland or the Republic of Turkey, and such Product was intended for sale in the EEA or in Switzerland or in Turkey, you can have your Product serviced in any EEA country or in Switzerland or in Turkey, under the warranty conditions prevailing in the country in which you require servicing, provided that an identical Product is sold in such country by an authorised Sony Ericsson distributor. To find out if your Product is sold in the country you are in, please call the local Sony Ericsson Call Centre. Please observe that certain services may not be possible elsewhere than in the country of original purchase, for example due to the fact that your Product may have an interior or exterior which is different from equivalent models sold in other countries. Please note in addition that it may sometimes not be possible to repair SIM-locked Products.

** In some countries/regions additional information (such as a valid warranty card) may be requested.

FCC Statement

This device complies with Part 15 of the FCC rules. Operation is subject to the following two conditions:

- (1) This device may not cause harmful interference, and
- (2) This device must accept any interference received, including interference that may cause undesired operation.



Declaration of Conformity

We, Sony Ericsson Mobile Communications AB of Nya Vattentorget

SE-221 88 Lund, Sweden

declare under our sole responsibility that our product

Sony Ericsson type AAD-3022101-BV

and in combination with our accessories, to which this declaration relates is in conformity with the appropriate standards 3GPP TS 51.010-1, EN 301908-1, EN 301908-2, EN 301489-7, EN 301489-24, EN 300328, EN 301489-17 and EN 60950, following the provisions of, Radio Equipment and Telecommunication Terminal Equipment directive 99/5/EC with requirements covering EMC directive 89/336/EEC, and Low Voltage directive 73/23/EEC.

Lund, May 2007

CE 0682

A handwritten signature in black ink, reading 'Shoji Nemoto', written over a horizontal line.

Shoji Nemoto,

Head of Product Business Group GSM/UMTS

We fulfil the requirements of the R&TTE Directive (99/5/EC).

Index

A

activity menu	13
alarms	59
answering service	23
applications	49
appointments	60
assembly	5
automatic redialling	16

B

battery	
charging	7
inserting	5
use and care	73
Bluetooth™ wireless technology	52
business cards	22

C

calculator	62
calendar	59–60
call divert	25
call list	22
call numbers in message	31
call time	29
caller-specific ringtones	19

calls

accepting	28
answering and rejecting	17
emergency	17
handling two calls	26
international	16
making and receiving	16
making notes during	29
putting on hold	26
recording	48
video	18

camera

overview	37
settings	38

code memo	63
conference calls	27

contacts

adding phone contacts	18
default contacts	18
groups of	22
synchronizing	56

D

date	64
declaration of conformity	79

E		L	
email	34	language	15
entering text	15	limited warranty	77
F		lock	
file manager	13	keypad	66
fixed dialling	28	phone	65
G		SIM card	64
games	49	long messages	31
groups	22	M	
H		M2™	75
handsfree	23, 42	magic word	24
Bluetooth technology	53	master reset	66
help	7	Media Manager	43
hiding number	29	memory card	13, 75
I		memory status	21
IMEI number	66	menu overview	10
Internet		menus	12
bookmarks	51	messages	
security and certificates	51	area and cell information	37
settings	50	email	34
J		picture	31
Java™	49	voice	33
K		microphone	17
keypad lock	66	MMS See picture messages	
keys	8	music player	42
		MusicDJ™	48
		My friends	35
		my numbers	27

N

navigating menus	12
notepad	29
notes	62

P

phone name	50
Photo fix	38
photo tags	40
PhotoDJ™	41
picture messages	31
pictures	40
edit	41
PIN code	
changing	65
unblocking	6
playlists	44–45
PlayNow™	46
profiles	64
PUK	6, 64, 65
push email	35

R

remote control	54
ringtones	47

S

safety guidelines	72
sending	
appointments and tasks	60
business cards	22
melodies and ringtones	48
music	43
notes	62
pictures	39
settings	
Internet	50
Java™	49
shortcuts	12
SIM card	
copying to/from	20
lock and unblock	64
SMS	30
sound recorder	48
speed dialling	23
standby	7
startup screen	7
stopwatch	62
submenus	12
synchronizing	56–58

T		
T9™ Text Input	15	
tasks	61	
templates	33	
themes	42–47	
time	64	
time zone	64	
timer	62	
transfer method		
Bluetooth technology	52	
USB	54	
transferring		
camera pictures	39	
files	54	
music	44	
sound	54	
turning on/off		
Bluetooth	52	
phone lock	65	
SIM lock protection	65	
U		
unblock SIM card	65	
update service	58	
V		
video player	43	
video recorder	37	
voice answering	25	
voice control	23	
voice messages	33	
voicemail	23	
volume		
ear speaker	17	
ringtone	47	
W		
Web feeds	52	
Z		
zoom	38	