

1 Pick a Spot for Your Home Dock

Just like when you set up the Home Dock that came with your XMp3i™ or Pioneer XMp3™ Radio, choose a location for this one that is in close proximity to your stereo system or powered speakers, and also where the cable from the Indoor/Outdoor Home Antenna can reach the Home Dock. The location should be easily accessible and provide good visibility of the display, and should not be located where it will be in direct sunlight which will affect the visibility of the display screen.

You will also need to decide whether you will be connecting your Home Dock to your stereo system using the provided Stereo Audio Cable, or directly to a set of powered speakers.



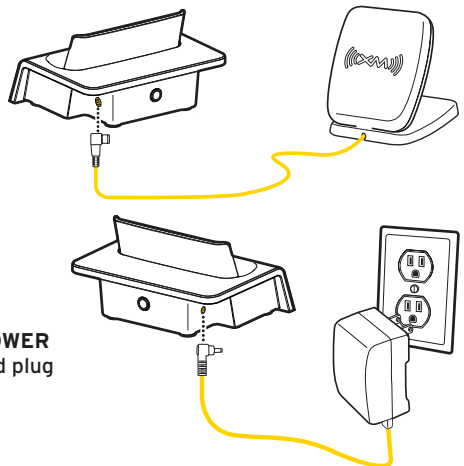
2 Connect the Home Dock

Connect the Indoor/Outdoor Home Antenna

Once you have selected a location, connect the Indoor/Outdoor Home Antenna to the **silver ANT** connector at the right side of the Home Dock. (After completing a few additional steps, we will work on the location of the antenna.)

Connect the Home Power Adapter

Connect the Home Power Adapter to the **red POWER** connector at the left side of the Home Dock, and plug it into a wall outlet.



Connect the Home Dock (continued)

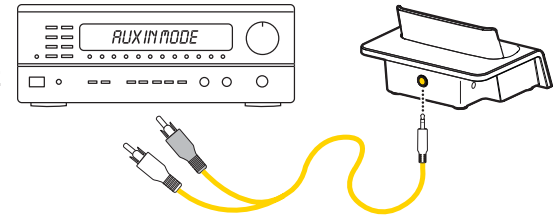
Connect the Home Dock to a Stereo System or Powered Speakers

The Home Dock can be connected to stereo system, or to a set of powered speakers. If you are connecting to a stereo system, see the following section. If you are connecting to a set of powered speakers, see "To Connect the Home Dock to Your Powered Speakers".

To Connect the Home Dock to Your Stereo System

The Home Dock can be connected to your stereo system through the **AUX In** or **LINE In** input jacks of your stereo system, using the provided Stereo Audio Cable.

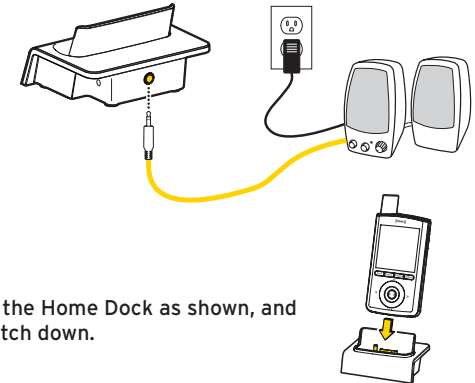
- 1 Take the provided Stereo Audio Cable and connect the single 1/8" (3.5 mm) connector to the **green AUDIO** connector at the rear of the Home Dock.
- 2 Connect the white left and red right Stereo Audio Cable connectors to any available input other than PHONO on your stereo system. (If your stereo's inputs are marked red and black, simply connect the white plug to the black input.)
- 3 Turn the stereo system On, and make sure you select the correct input on your stereo system for the **AUX In** or **LINE In** connection, or whatever input you have selected.



To Connect the Home Dock to Your Powered Speakers

The Home Dock can be connected directly to a set of powered speakers.

- 1 Connect the 1/8" (3.5 mm) connector from the powered speakers to the **green AUDIO** connector at the rear of the Home Dock.
- 2 Plug the powered speakers into a standard power outlet.
- 3 Turn On the powered speakers.



Dock Your Radio

Place your XMp3i™ or Pioneer XMp3™ Radio into the Home Dock as shown, and turn your Radio On by sliding the **Power/Lock** switch down.

3 Install the Indoor/Outdoor Home Antenna

Indoor/Outdoor Home Antenna Installation

Begin by experimenting with the Indoor/Outdoor Home Antenna to get a feel for the reception in your location. Move the antenna around the room or from room to room. Aim it from different windows. In major metropolitan areas, you might find that you get great reception in several locations without worrying too much about aim and placement.

Access the Antenna Aiming screen of your Satellite Radio to see a visual indication of signal strength:

- 1 Press **menu**.
- 2 Turn the **Control Wheel** to highlight **Settings** and press **Select**.
- 3 Turn the **Control Wheel** to highlight **Antenna Aiming** and press **Select**.

If you're receiving good Satellite and Terrestrial signal strength, you're done. If not, try some of the suggestions which follow.



Other Indoor/Outdoor Home Antenna Installation Suggestions

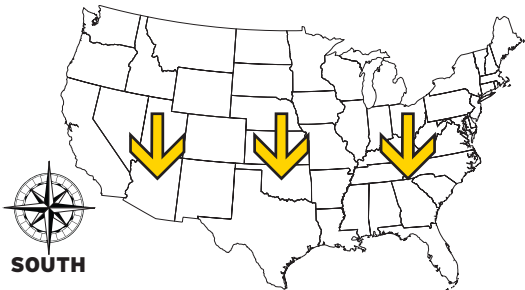
Move the Antenna Closer to a Window

If you find you are getting a signal, but it's inconsistent, try moving the Indoor/Outdoor Home Antenna closer to a window, ideally one that is facing due south.

Not sure which way is south? Think about where the sun rises (in the east) and sets (in the west). Then stand so that east is to your left and you'll be facing south. Is there a window in the direction you're facing? Move the antenna closer to the window.



TIP! Still not sure which way is south or where to place your Indoor/Outdoor Home Antenna? Look up your location on an online mapping website that offers satellite views of street addresses where you can easily see which way is south, and what windows may offer an unobstructed view of the sky.

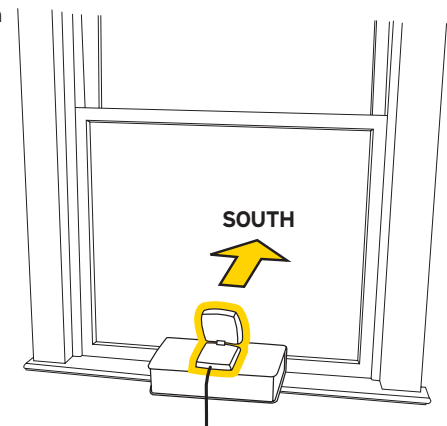


Install the Indoor/Outdoor Home Antenna (continued)

Place the Antenna on a Window Sill

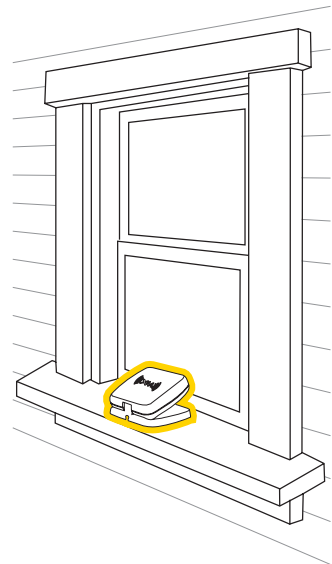
Another easy method is to start at any window, then work from window to window in a simple pattern to find the window gives the best signal strength. Aim the surface of the antenna with the XM logo out the window. Note that the antenna must also have an unobstructed view, with no trees or buildings blocking its aim. If the antenna is aimed through a window, be aware that blinds, screens, or any other non-glass elements such as thermal insulation can sometimes cause reception issues. If this is the case, you may want to use another window or place the antenna outside of the window.

If you find a window that gives you good signal strength, you can place the antenna on the windowsill. The antenna may need to be placed on something to raise it above the level of the window frame.



Place the Antenna Outdoors

If you don't have a window where you receive a consistent signal, or placing the antenna in a window is not a practical solution for you, **BETTER** reception can be achieved by placing the antenna outside on a window ledge, porch, table, or patio. The location you choose should provide the antenna with a clear view of the southern sky.

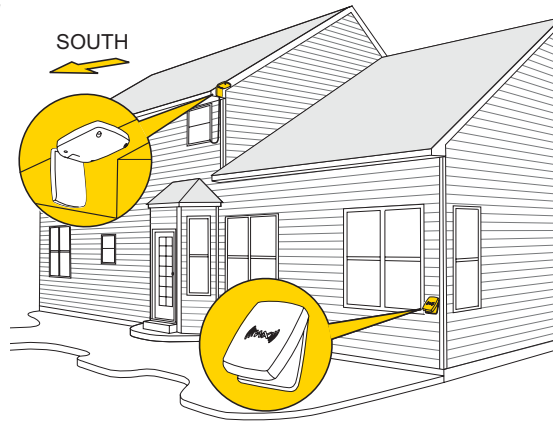


Install the Indoor/Outdoor Home Antenna (continued)

Mount the Antenna Outside on a Wall or Soffit

If none of the previous solutions work for you, then the **BEST** reception can be achieved by mounting the antenna outdoors on the house or building, with a clear view of the southern sky.

Refer to the User Guide which accompanied your XMp3i™ Additional Home Kit for more detailed instructions on how to mount the Indoor/Outdoor Home Antenna on a wall or soffit.



Tweaking Signal Reception

If the signal reception is low, or intermittent, try another location for the antenna. Verify that the antenna is pointed south, and that the antenna's view of the sky is not blocked by a tree, a building, a bridge, or anything else. Adjust until you are receiving a good signal.

The Indoor/Outdoor Home Antenna's reception can also be tweaked by opening or closing the antenna clamshell, and turning the antenna. While observing the signal strength, make small adjustments to the angle of tilt of the clamshell until the highest possible signal strength is achieved. If you have not wall-mounted the antenna, turn the antenna slightly to the right or left and observe if the signal strength increases. For each tweak, allow a few seconds in each position to determine if the signal strength increases.

Good Signal Reception, But No Audio

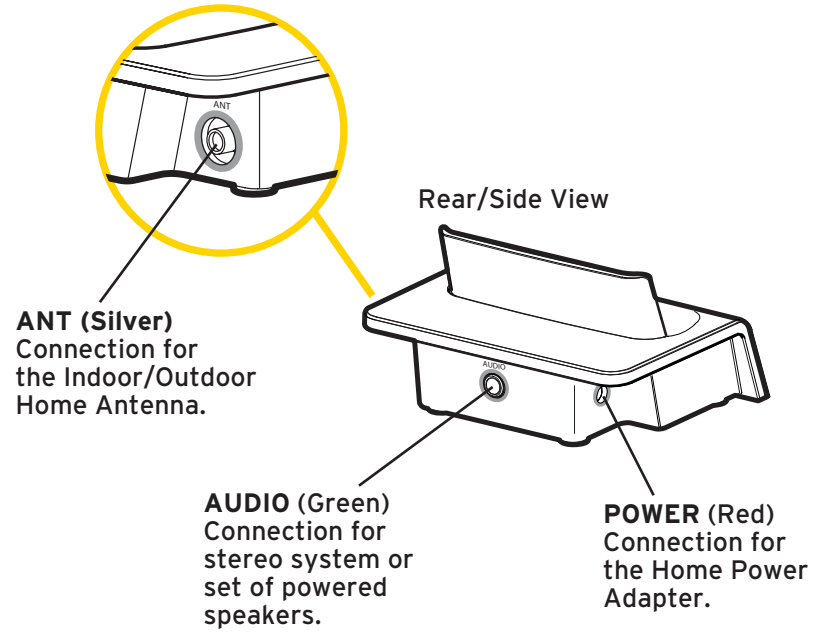
If the signal reception is good, but there is no audio, verify your audio connection.

- If you are connected to a stereo system, be sure the stereo system is set to the same **AUX In** or **LINE In** input source you chose and that the Stereo Audio Cables are fully connected. If you still have no audio, try choosing a different input source.
- If you are connected to a set of powered speakers, be sure the speakers are plugged into an outlet, and are turned On.
- The audio level of your Satellite Radio can also be increased. Refer to the User Guide which accompanied your Radio and increase the audio level.

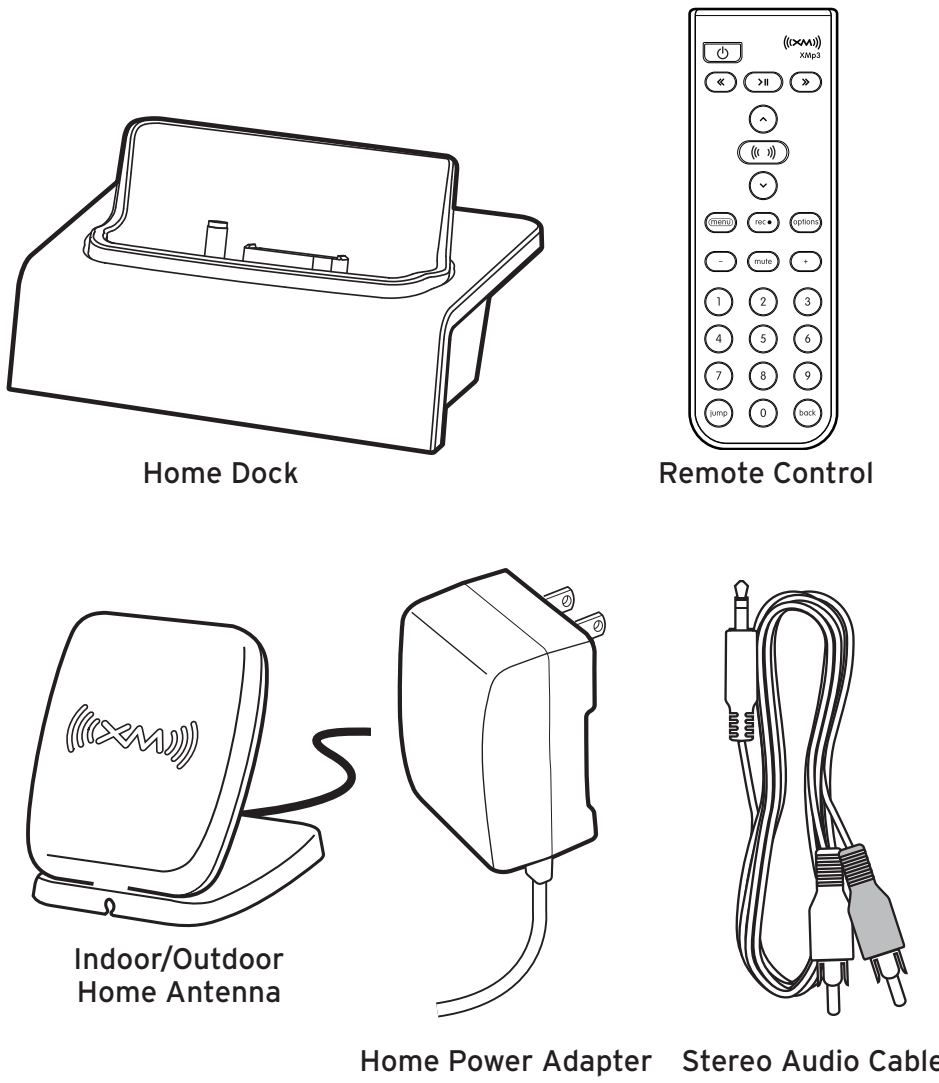
Now that you have audio, the installation is complete! Sit back and enjoy your favorite programming on SIRIUS | XM Satellite Radio!

Home Dock

Color-Coded Connections
The Color-Coded Home Dock makes it simple to connect.



What's in the Box?



xmradio.com

SIRIUS XM Radio Inc.
1221 Avenue of the Americas
New York, NY 10020
1.866.746.7691

© 2010 SIRIUS XM Radio Inc.
Quick Start Guide (XMP3IHKQSG0210) 021710

xMp3i
ADDITIONAL HOME KIT
Quick Start Guide



SIRIUS | **((XM))**
S A T E L L I T E R A D I O