

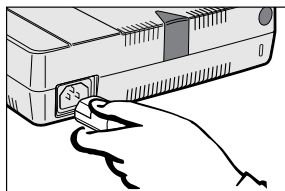
SHARP®

## Digital Multimedia Projector

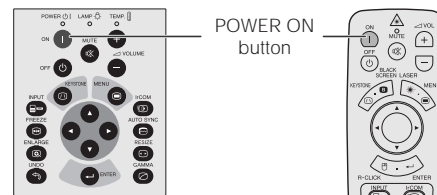
# Quick Reference for Notevision 7

### A. Connecting the Power Cord

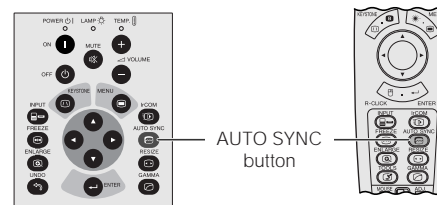
Plug the supplied power cord into the AC socket on the back of the projector.



- ④ Press **POWER ON**.

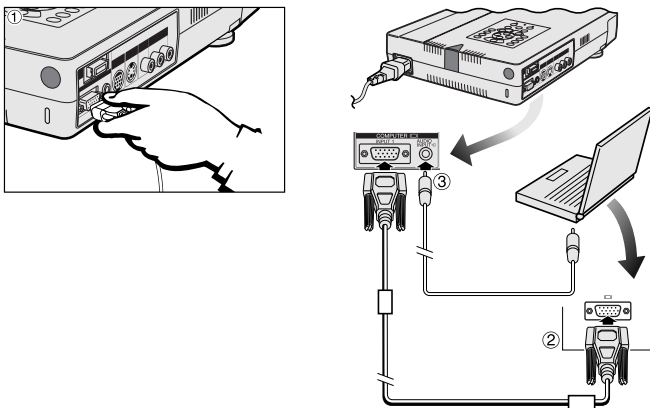


- ⑤ Turn on the computer.  
⑥ Press **AUTO SYNC** to adjust the image.



### B. Connecting to a Computer Using the Standard 15-pin (VGA) Input

- ① Connect one end of the supplied computer cable to the INPUT 1 port on the projector.
- ② Connect the other end to the Monitor output port on the computer. Secure the connectors by tightening the thumb screws.
- ③ To use the built-in audio system, connect one end of the supplied computer audio cable to the AUDIO INPUT terminal on the projector. Connect the other end to the Audio output terminal on the computer.



### D. Connecting the Remote Mouse Receiver

#### IBM or IBM compatible PC

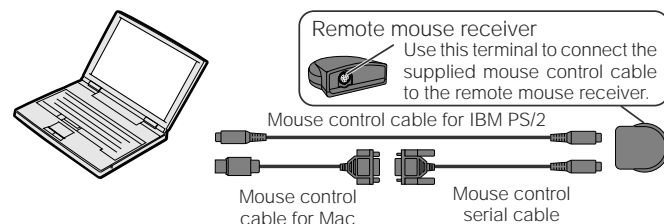
- ① Connect one end of the supplied mouse control cable to the corresponding terminal on the PC.
- ② Connect the other end to the remote mouse receiver.

#### Macintosh

- ① Connect the mouse control serial cable to the remote mouse receiver.
- ② Connect the mouse control cable for Mac to the Mac ADB port on the Mac.
- ③ Connect the other end of the mouse control cable for Mac to the mouse control serial cable.

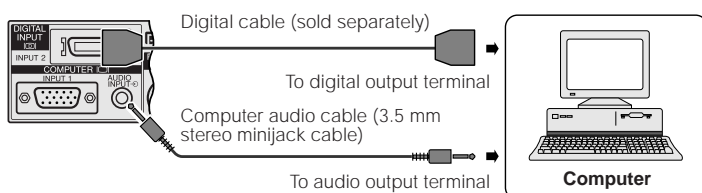
#### NOTE

- Make sure that your computer is turned off while making any mouse control cable connections.
- When using the wireless mouse with an IBM or IBM compatible PC, you can use either a PS/2 or serial cable connection. (See diagram below.)
- Use the supplied mouse control cable for Mac when using the remote mouse receiver with a Macintosh computer.



### C. Connecting to a Computer Using the Direct Digital Input (PanelLink™)

- ① Connect one end of the digital cable to the INPUT 2 port on the projector.
- ② Connect the other end to the corresponding terminal on a computer.
- ③ To use the built-in audio system, connect one end of the supplied computer audio cable to AUDIO INPUT terminal on the projector. Connect the other end to the Audio output terminal on the computer.



## Adjusting the Lens

Turn the zoom ring. The image can be adjusted to the zoom range within the zoom range.

Turn the focus ring until the image on the screen is in focus.



Turn OFF again while the menu is displayed.

Turn Power OFF