

SHARP®

EL-6790

PC Interface Software

User's Guide

What Does PC Interface Software Do?

Backup Backs up all EL-6790 data to your PC.
Restore Restores data from a backup file into an EL-6790.

Address Utility Allows you to type in an address, E-mail or URL entry on a PC and download it into your EL-6790.

Supplied Items

- * Sharp Electronic Organizer EL-6790
- * One 3.5" Floppy Disk (PC Interface Software)
- * PC Interface Cable
- * PC Interface Software User's Guide (this sheet)

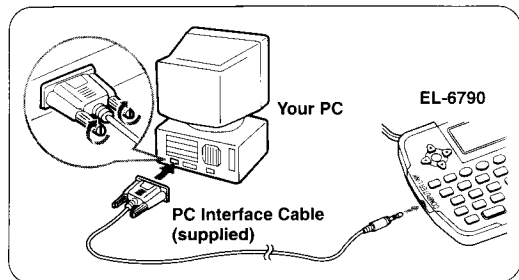
Please contact your nearest SHARP dealer if any of the above items are missing from the EL-6790P package or are damaged.

System Requirements

- Windows® 98, or Windows® 95
- IBM-compatible 486 or Pentium processor (33MHz or greater)
- 8MB free hard disk space
- 16MB RAM available
- VGA monitor or better
- Microsoft® Mouse or compatible Pointing Device
- 3.5" disk drive
- One available serial port with D-sub 9-pin connector

Before You Begin

Connecting Your EL-6790 to a PC



1. Turn off your PC and the EL-6790.
2. Connect the standard 9-pin connector of the PC interface cable into a COM port on your PC.

NOTE

* Using a 25-pin connector instead of the standard 9-pin connector requires an additional adaptor.

3. Connect the other end of the PC Interface Cable into the PC interface connector located on the left side of the EL-6790.

Installing

1. Insert the PC Interface Software disk into your disk drive.
2. Click on the Windows [Start] button and then click [Run].
3. Type in **a:\Setup.exe** and click on [OK].
 - Type in your disk drive name ("a:" in this example).
4. Follow the on-screen instructions.

The software is installed into the following location and can be accessed in the following directory:

C:/Program Files/Sharp EL-6790/

Application: [Start] → [Program] → [Sharp EL-6790] → [EO-Utility]

ReadMe: [Start] → [Program] → [Sharp EL-6790] → [ReadMe]

You are recommended not to change the default folder name: [Sharp EL-6790].

5. Click [Finish].

Getting Started

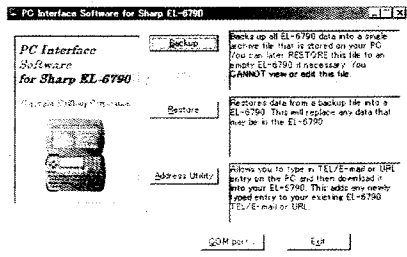
Known Incompatibilities

- While you are backing up or restoring data, a transfer error may occur with certain 3D screen saver utility programs enabled. Before transferring data, disable any 3D screen saver utility programs you may be running.
- PC Interface Software may not run reliably with certain virus scanning programs enabled. If you have problems in transferring data with your EL-6790, disable any virus checking software you may be running.
- PC Interface Software may not run reliably with certain power management features enabled. If you have problems in transferring data with your EL-6790, disable any power management features you may have turned on.

PC Interface Software Main Screen

All operations can be accessed from the Main Screen.

To access the Main Screen, click [Start] → [Program] → [Sharp EL-6790] → [EO-Utility].

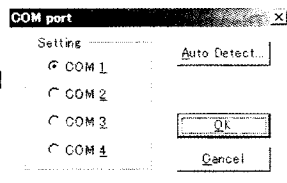


Setting the COM port

1. Connect your EL-6790 to a PC.
2. Click [Start] → [Program] → [Sharp EL-6790] → [EO-Utility].
The PC Interface Software Main Screen appears.
3. Click [COM port...].

The COM port setting dialog box appears.

- * Click the radio button to select an appropriate port, or
- * Click [Auto Detect...] to allow an appropriate port to be selected automatically.



NOTE

* When you are using a notebook PC, an error message may be displayed when you press [Auto Detect...]. Check the BIOS setting on your notebook PC and set it to the serial port. Even when the BIOS setting is correctly made, you may need to select an appropriate port manually.

Backup and Restore

Making a Backup File

1. Connect your EL-6790 to a PC.
2. Click [Start] → [Program] → [Sharp EL-6790] → [EO-Utility].

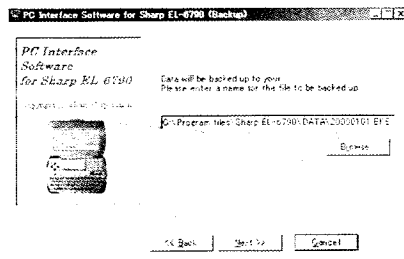
The PC Interface Software Main Screen appears.

3. Click [Backup].

The dialog box appears asking you to enter the backup file name, if necessary.

* The default name is determined according to the PC clock system, in the format of "YYYYMMDD.BKE", for example, 20000101.BKE.

- * [Browse...] allows you to change the backup file, its file name and its destination.



continued on the back →

NOTE

* When the COM port has not been selected, the warning message dialog box appears. Click [OK]. Then click [COM port...] on the Main Screen and select the appropriate port.

- Click [NEXT >>] to start the backup process.

The instructions screen appears.

- To cancel the backup process, press [Abort] on the instructions screen.

- On your EL-6790:

Press **[2nd]** **[OPTION]** and **[4]** to select BACKUP.

Then press **[Y]** to start the backup process.

Restoring a Backup File

"Restore" function replaces all the data in the EL-6790 with the backup file saved on a PC.

NOTE

* Make sure you really want to delete all the data in your EL-6790 before executing the "Restore" function. Once you start the restoration process, all the data in the EL-6790 will be deleted, even if you cancel the restoration process.

- Connect your EL-6790 to a PC.

- Click [Start] → [Program] → [Sharp EL-6790] → [EO-Utility].

The PC Interface Software Main Screen appears

- Click [Restore].

The dialog box appears asking you to choose the backup file name.

- Click [NEXT >>] to start the restoration process.

The confirmation dialog box appears.

- To cancel the restoration process, press [NO].

- Press [YES].

The instructions screen appears.

- To cancel the restoration process, press [Abort] on the instructions screen.

- On your EL-6790:

Press **[2nd]** **[OPTION]** and **[5]** to select RESTORE.

The data transfer is started.

Address Utility

Click [Address Utility] on the Main Screen to open the Address Utility window.

Command Buttons

Entry fields of TEL/E-mail mode

Mode tabs

Switch the mode window between TEL/E-mail mode and URL mode.

Send button

Transfers the data to your EL-6790.

New button

Clears the input data in all entry fields to create new data.

Secret button

Sets this data as secret. Click on this area.

☒ : Secret ON ☐ : Secret OFF

Done button

Closes the dialog window.

Entry fields of URL mode

Entering an Address

<Example> Enter the following data as secret data in TEL/E-mail mode.

Name Edwards Bob
Number 201-265-5600
F 265-1234
Address Supervisor Sales dept.
ABCD co. 15 North St.
E-mail edwards@abcd.efg.com

1. Connect your EL-6790 to a PC.
2. Click [Start] → [Program] → [Sharp EL-6790] → [EO-Utility].
The PC Interface Software Main Screen appears.
3. Click [Address Utility].
4. Click [TEL/E-mail] tab.
5. Press [New] to clear the input data in all entry fields.
6. Enter the example listed above.

7. (After entering the information), click [Send].

The instructions screen appears.

- To cancel the transferring process, press [Abort] on the instructions screen.

8. On your EL-6790:
Press **[2nd]** **[OPTION]** and **[2]** to select RECV (RECEIVE).

If the transferred data is displayed on the display of the EL-6790, the transferring process is completed.

Edwards Bob
201-265-5600
F 265-1234
Supervisor Sa

NOTES

* Do not forget to fill in the Name field before pressing [Send]. Otherwise, the data you typed in can not be sent.

* You can not enter the characters or symbols not supported by the EL-6790 in the entry fields.

In U.S.A.

Customer Support

www.sharp-usa.com **Sharp Web Site**
Information and FAQs

1-630-378-3590 **Sharp Customer Assistance Center**
(7am to 7pm CST M-F)

SHARP®

SHARP CORPORATION

PRINTED IN CHINA

99DTO(TINSE0339THZZ)

0GV 9104 - WP06C0

[01] [03] [04] [20] [23] [30]