

EFI User Software Installation Guide



Copyright

Sharp AR-C360P EFI User's Software Installation Guide

P/N 59379501, Revision 1.1

September, 2005

Every effort has been made to ensure that the information in this document is complete, accurate, and up-to-date. Sharp assumes no responsibility for the results of errors beyond its control. Sharp also cannot guarantee that changes in software and equipment made by other manufacturers and referred to in this guide will not affect the applicability of the information in it. Mention of software products manufactured by other companies does not necessarily constitute endorsement by Sharp.

While all reasonable efforts have been made to make this document as accurate and helpful as possible, we make no warranty of any kind, expressed or implied, as to the accuracy or completeness of the information contained herein.

Copyright © 2005 Sharp Electronics Corp. and Electronics for Imaging, Inc. All rights reserved.

This publication is protected by copyright, and all rights are reserved. No part of it may be reproduced or transmitted in any form or by any means for any purpose without express prior written consent from Electronics for Imaging, Inc. Information in this document is subject to change without notice and does not represent a commitment on the part of Electronics for Imaging, Inc. or Sharp

This publication is provided in conjunction with an Sharp Electronics Corp. product (the "Product") which contains EFI software (the "Software"). The Software is furnished under license and may only be used or copied in accordance with the terms of the Software license set forth below.

This product may be covered by one or more of the following U.S. Patents: p 4,716,978, 4,828,056, 4,917,488, 4,941,038, 5,109,241, 5,170,182, 5,212,546, 5,260,878, 5,276,490, 5,278,599, 5,335,040, 5,343,311, 5,398,107, 5,424,754, 5,442,429, 5,459,560, 5,467,446, 5,506,946, 5,517,334, 5,537,516, 5,543,940, 5,553,200, 5,563,689, 5,565,960, 5,583,623, 5,596,416, 5,615,314, 5,619,624, 5,625,712, 5,640,228, 5,666,436, 5,745,657, 5,760,913, 5,799,232, 5,818,645, 5,835,788, 5,859,711, 5,867,179, 5,940,186, 5,959,867, 5,970,174, 5,982,937, 5,995,724, 6,002,795, 6,025,922, 6,035,103, 6,041,200, 6,065,041, 6,112,665, 6,116,707, 6,122,407, 6,134,018, 6,141,120, 6,166,821, 6,173,286, 6,185,335, 6,201,614, 6,215,562, 6,219,155, 6,219,659, 6,222,641, 6,224,048, 6,225,974, 6,226,419, 6,238,105, 6,239,895, 6,256,108, 6,269,190, 6,271,937, 6,278,901, 6,279,009, 6,289,122, 6,292,270, 6,299,063, 6,310,697, 6,321,133, 6,327,047, 6,327,050, 6,327,052, 6,330,071, 6,330,363, 6,331,899, 6,340,975, 6,341,017, 6,341,018, 6,341,307, 6,347,256, 6,348,978, 6,356,359, 6,366,918, 6,369,895, 6,381,036, 6,400,443, 6,429,949, 6,449,393, 6,476,927, 6,490,696, 6,501,565, 6,519,053, 6,539,323, 6,543,871, 6,546,364, 6,549,294, 6,549,300, 6,550,991, 6,552,815, 6,559,958, 6,572,293, 6,590,676, 6,606,165, 6,633,396, 6,636,326, 6,643,317, 6,647,149, 6,657,741, 6,662,199, 6,678,068, RE33,973, RE36,947, D341,131, D406,117, D416,550, D417,864, D419,185, D426,206, D439,851, D444,793.

Trademarks

Auto-Count, ColorCal, ColorWise, Command WorkStation, EDOX, EFI, Fiery, the Fiery logo, MicroPress, Printcafe, PrinterSite, Prograph, Proteus, and Spot-On are registered trademarks of Electronics for Imaging, Inc., in the U.S. Patent and Trademark Office and/or certain other foreign jurisdictions. Bestcolor is a registered trademark of Best GmbH in the U.S. Patent and Trademark Office.

AutoCal, Digital StoreFront, DocStream, Fiery Link, FreeForm, Hagen, Intelligent Device Management, Logic, OneFlow, PrintFlow, PrintMe, PrintSmith Site, PrintSmith, PSI Flexo, PSI, SendMe, Splash, VisualCal, the EFI logo, Essential to Print are trademarks of Electronics for Imaging, Inc. Best, the Best logo, Colorproof, PhotoXposure, Remoteproof, and Screenproof are trademarks of Best GmbH.

All other terms and product names may be trademarks or registered trademarks of their respective owners, and are hereby acknowledged.

Legal Notices

APPLE COMPUTER, INC. ("APPLE") MAKES NO WARRANTIES, EXPRESS OR IMPLIED, INCLUDING WITHOUT LIMITATION THE IMPLIED WARRANTIES OF MERCHANTABILITY AND FITNESS FOR A PARTICULAR PURPOSE, REGARDING THE APPLE SOFTWARE. APPLE DOES NOT WARRANT, GUARANTEE, OR MAKE ANY REPRESENTATIONS REGARDING THE USE OR THE RESULTS OF THE USE OF THE APPLE SOFTWARE IN TERMS OF ITS CORRECTNESS, ACCURACY, RELIABILITY, CURRENTNESS, OR OTHERWISE. THE ENTIRE RISK AS TO THE RESULTS AND PERFORMANCE OF THE APPLE SOFTWARE IS ASSUMED BY YOU. THE EXCLUSION OF IMPLIED WARRANTIES IS NOT PERMITTED BY SOME STATES. THE ABOVE EXCLUSION MAY NOT APPLY TO YOU.

IN NO EVENT WILL APPLE, ITS DIRECTORS, OFFICERS, EMPLOYEES OR AGENTS BE LIABLE TO YOU FOR ANY CONSEQUENTIAL, INCIDENTAL OR INDIRECT DAMAGES (INCLUDING DAMAGES FOR LOSS OF BUSINESS PROFITS, BUSINESS INTERRUPTION, LOSS OF BUSINESS INFORMATION, AND THE LIKE) ARISING OUT OF THE USE OR INABILITY TO USE THE APPLE SOFTWARE EVEN IF APPLE HAS BEEN ADVISED OF THE POSSIBILITY OF SUCH DAMAGES. BECAUSE SOME STATES DO NOT ALLOW THE EXCLUSION OR LIMITATION OF LIABILITY FOR CONSEQUENTIAL OR INCIDENTAL DAMAGES, THE ABOVE LIMITATIONS MAY NOT APPLY TO YOU. Apple's liability to you for actual damages from any cause whatsoever, and regardless of the form of the action (whether in contract, tort [including negligence], product liability or otherwise), will be limited to \$50.

PANTONE® Colors displayed in the software application or in the user documentation may not match PANTONE-identified standards. Consult current PANTONE Color Publications for accurate color. PANTONE® and other Pantone, Inc. trademarks are the property of Pantone, Inc. © Pantone, Inc., 2001.

Pantone, Inc. is the copyright owner of color data and/or software which are licensed to Electronics for Imaging, Inc., to distribute for use only in combination with the products, or software of Electronics for Imaging, Inc. PANTONE Color Data and/or Software shall not be copied onto another disk or into memory except as part of the delivery of the Electronics for Imaging, Inc., products or software.

This product includes software developed by the Apache Software Foundation (<http://www.apache.org/>).

FCC Information

WARNING: FCC Regulations state that any unauthorized changes or modifications to this equipment not expressly approved by the manufacturer could void the user's authority to operate this equipment.

Class B Declaration of Conformity

This equipment has been tested and found to comply with the limits for a class B digital device, pursuant to Part 15 of the FCC rules. These limits are designed to provide reasonable protection against harmful interference in a residential installation. This equipment generates, uses and can radiate radio frequency energy and if not installed and used in accordance with the instructions, may cause harmful interference to radio communications. However, there is no guarantee that interference will not occur in a particular installation.

If this equipment does cause harmful interference to radio or television reception, which can be determined by turning the equipment off and on, the user is encouraged to try to correct the interference by one or more of the following measures:

Reorient or relocate the receiving antenna.

Increase the separation between the equipment and receiver.

Connect the equipment into an outlet on a circuit different from that to which the receiver is connected.

Consult the dealer or an experienced radio/TV technician for help.

In order to maintain compliance with FCC regulations, shielded cables must be used with this equipment. Operation with non-approved equipment or unshielded cables is likely to result in interference to radio and TV reception. The user is cautioned that changes and modifications made to the equipment without the approval of manufacturer could void the user's authority to operate this equipment.

Industry Canada Class B Notice

This Class B digital apparatus complies with Canadian ICES-003.

Avis de Conformation Classe B de l'Industrie Canada

Cet appareil numérique de la Classe B est conforme à la norme NMB-003 du Canada.

RFI Compliance Notice

This equipment has been tested concerning compliance with the relevant RFI protection requirements both individually and on system level (to simulate normal operation conditions). However, it is possible that these RFI Requirements are not met under certain unfavorable conditions in other installations. It is the user who is responsible for compliance of his particular installation.

Dieses Gerät wurde sowohl einzeln als auch in einer Anlage, die einen normalen Anwendungsfall nachbildet, auf die Einhaltung der Funkentstörbestimmungen geprüft. Es ist jedoch möglich, dass die Funkentstörbestimmungen unter ungünstigen Umständen bei anderen Gerätekombinationen nicht eingehalten werden. Für die Einhaltung der Funkentstörbestimmungen einer gesamten Anlage, in der dieses Gerät betrieben wird, ist der Betreiber verantwortlich.

Compliance with applicable regulations depends on the use of shielded cables. It is the user who is responsible for procuring the appropriate cables.

Die Einhaltung zutreffender Bestimmungen hängt davon ab, dass geschirmte Ausführungen benutzt werden. Für die Beschaffung richtiger Ausführungen ist der Betreiber verantwortlich.

Software License Agreement

YOU SHOULD CAREFULLY READ THE FOLLOWING TERMS AND CONDITIONS BEFORE USING THIS SOFTWARE. IF YOU DO NOT AGREE TO THE TERMS AND CONDITIONS OF THIS AGREEMENT, DO NOT USE THE SOFTWARE. INSTALLING OR USING THE SOFTWARE INDICATES THAT YOU AGREE TO AND ACCEPT THE TERMS OF THIS AGREEMENT. IF YOU DO NOT AGREE TO ACCEPT THE TERMS OF THIS AGREEMENT YOU MAY RETURN THE UNUSED SOFTWARE FOR A FULL REFUND TO THE PLACE OF PURCHASE.

License

EFI grants you a non-exclusive license to use the Software and accompanying documentation ("Documentation") included with the Product. The Software is licensed, not sold. You may use the Software solely for your own customary business or personal purposes. You may not rent, lease, sublicense or lend the Software or use the Software in any time sharing, service bureau, or similar arrangement.

You may not make or have made, or permit to be made, any copies of the Software or portions thereof, except one (1) copy for backup or archive purposes in support of your use of the Software as permitted hereunder. You may not copy the Documentation. You may not attempt to localize, translate, disassemble, decompile, decrypt, reverse engineer, discover the source code of, modify, create derivative works of, or in any way change any part of the Software.

The terms, conditions, and restrictions in the License Agreement apply to all bug fixes, patches, releases, release notes, updates, and upgrades related to the Software.

Proprietary Rights

You acknowledge and agree that all rights, title and interest, including all intellectual property rights, in and relating to the Software, Documentation and all modifications and derivative works thereof are solely owned by and shall remain with EFI and its suppliers. Except for the express limited license granted above to use the Software, no right or license of any kind is granted. You receive no rights or license under any patents, copyrights, trade secrets, or trademarks (whether registered or unregistered). You agree not to adopt, register, or attempt to register any EFI trademark or trade name ("EFI Mark") or any confusingly similar mark, URL, internet domain name, or symbol as your own name or the name of your affiliates or products, and not to take any other action which impairs or reduces the trademark rights of EFI or its suppliers.

Confidentiality

The Software is confidential, proprietary information of EFI and you may not distribute or disclose the Software. You may, however, permanently transfer all of your rights under this Agreement to another person or legal entity provided that: (1) such a transfer is authorized under all applicable export laws and regulations, including the U.S. Export Administration Regulations, (2) you transfer to the person or entity all of the Software and Documentation (including all copies, updates, upgrades, prior versions, component parts, the media and printed materials, and this Agreement); (3) you retain no copies of the Software and Documentation, including copies stored on a computer; and (4) the recipient agrees to the terms and conditions of this Agreement.

Remedies and Termination

Unauthorized use, copying, or disclosure of the Software, or any breach of this Agreement will result in automatic termination of this license and will make available to EFI other legal remedies. In the event of termination, you must destroy all copies of the Software, Documentation, and all component parts thereof. All provisions of this Agreement relating to disclaimers of warranties, limitation of liability, remedies, damages, governing law, jurisdiction, venue, and EFI's proprietary rights shall survive termination.

Limited Warranty and Disclaimer

EFI warrants to the original purchaser ("Customer") for thirty (30) days from the date of original purchase from EFI or its authorized retailer that the Software will perform in substantial conformance to the Documentation when the Product is used as authorized by EFI's specifications. EFI warrants the media containing the Software against failure during the above warranty period. EFI makes no warranty or representation that the Software will meet your specific requirements, that the operation of the Software will be uninterrupted, secure, fault-tolerant, or error free, or that all defects in the Software will be corrected. EFI makes no warranty, implied or otherwise, regarding the performance or reliability of any third party products (software or hardware). THE INSTALLATION OF ANY THIRD PARTY PRODUCTS OTHER THAN AS AUTHORIZED BY EFI WILL VOID THIS WARRANTY. IN ADDITION, USE, MODIFICATION, AND/OR REPAIR OF THE PRODUCT OTHER THAN AS AUTHORIZED BY EFI WILL VOID THIS WARRANTY.

EXCEPT FOR THE ABOVE EXPRESS LIMITED WARRANTY AND TO THE MAXIMUM EXTENT PERMITTED BY APPLICABLE LAW, EFI MAKES AND YOU RECEIVE NO WARRANTIES OR CONDITIONS ON THE SOFTWARE, EXPRESS, IMPLIED, STATUTORY, OR IN ANY OTHER PROVISION OF THIS AGREEMENT OR COMMUNICATION WITH YOU, AND EFI SPECIFICALLY DISCLAIMS ANY IMPLIED WARRANTY OR CONDITION OF MERCHANTABILITY OR FITNESS FOR A PARTICULAR PURPOSE OR NONINFRINGEMENT OF THIRD PARTY RIGHTS.

Limitation of Liability

TO THE MAXIMUM EXTENT PERMITTED BY LAW, EFI AND ITS SUPPLIERS SHALL NOT BE LIABLE FOR ANY DAMAGES, INCLUDING LOSS OF DATA, LOST PROFITS, COST OF COVER OR OTHER SPECIAL, INCIDENTAL, CONSEQUENTIAL OR INDIRECT DAMAGES ARISING FROM THE SALE, INSTALLATION, MAINTENANCE, USE, PERFORMANCE OR FAILURE OF THE SOFTWARE, HOWEVER CAUSED AND ON ANY THEORY OF LIABILITY. THIS LIMITATION WILL APPLY EVEN IF EFI HAS BEEN ADVISED OF THE POSSIBILITY OF SUCH DAMAGE. YOU ACKNOWLEDGE THAT THE PRICE OF THE PRODUCT REFLECTS THIS ALLOCATION OF RISK. BECAUSE SOME JURISDICTIONS DO NOT ALLOW THE EXCLUSION OR LIMITATION OF LIABILITY FOR CONSEQUENTIAL OR INCIDENTAL DAMAGES, THE ABOVE LIMITATION MAY NOT APPLY TO YOU.

You are hereby notified that Adobe Systems Incorporated, a Delaware corporation located at 345 Park Avenue, San Jose, CA 95110-2704 ("Adobe") is a third-party beneficiary to this agreement to the extent that this agreement contains provisions which relate to your use of any software, font programs, typefaces, and/or trademarks licensed or supplied by Adobe. Such provisions are made expressly for the benefit of Adobe and are enforceable by Adobe in addition to EFI. ADOBE WILL HAVE NO LIABILITY WHATSOEVER TO YOU FOR ANY ADOBE SOFTWARE OR TECHNOLOGY LICENSED HEREUNDER.

Export Controls

EFI's Products are subject to U.S. export laws and regulations, including the U.S. Export Administration Regulations, as well as foreign export laws and regulations. You agree that you will not use, distribute, transfer, export, or re-export any portion of the Product or the Software in any form in violation of any applicable laws or regulations of the United States or the country in which you obtained them.

U.S. Government Restricted Rights:

Use, duplication, or disclosure of the Software by the United States Government is subject to restrictions as set forth in FAR 12.212 or DFARS 227.7202-3 -227.7202-4 and, to the extent required under U.S. federal law, the minimum restricted rights as set out in FAR 52.227-14, Restricted Rights Notice (June 1987) Alternate III(g)(3)(June 1987) or FAR 52.227-19 (June 1987). To the extent any technical data is provided pursuant to the Agreement, such data is protected per FAR 12.211 and DFARS 227.7102-2 and to the extent explicitly required by the U.S. Government, is subject to limited rights as set out in DFARS 252.227.7015 (November 1995) and DFARS 252.227-7037 (September 1999). In the event that any of the above referenced agency regulations are modified or superceded, the subsequent or equivalent regulation shall apply. The name of the Contractor is Electronics for Imaging.

General

The rights and obligations of the parties related to this Agreement will be governed in all respects by the laws of the State of California exclusively, as such laws apply to contracts between California residents performed entirely within California. The United Nations Convention on Contracts for the International Sale of Goods and any other similar convention does not apply to this Agreement. For all disputes related to this Agreement, you consent to the personal and exclusive jurisdiction and venue of the state courts in San Mateo County, California and the federal court for the Northern District of California. This Agreement is the entire agreement held between us and supersedes any other communications or advertising with respect to the Software. If any provision of this Agreement is held invalid, such provision shall be deemed modified to the extent necessary to be enforceable and the other provisions in this Agreement shall continue in full force and effect.

If you have any questions, please see EFI's web site at www.efi.com.

Electronics for Imaging

303 Velocity Way

Foster City, CA 94404

Contents

About the Documentation

Introduction

About this manual	10
-------------------	----

Chapter 1: Installing User Software on a Windows Computer

Setting up PostScript or PCL printing with Windows 98/Me	1-17
Installing the PostScript or PCL printer driver for Windows 98/Me	1-17
Configuring installed options	1-20
Completing the Windows 98/Me printer connection	1-21
Setting up PostScript or PCL printing with Windows NT 4.0	1-33
Installing the PostScript or PCL printer driver for Windows NT 4.0	1-33
Configuring installed options	1-36
Completing the Windows NT 4.0 printer connection	1-37
Setting up PostScript or PCL printing with Windows 2000/XP/Server 2003	1-44
Installing the PostScript or PCL printer driver for Windows 2000/XP/Server 2003	1-44
Configuring installed options	1-47
Completing the Windows 2000/XP/Server 2003 printer connection	1-49
Installing EFI Fiery Mail Port	1-59
Installing Fiery utilities	1-65
Using Fiery utilities for the first time	1-68
Configuring the connection for Fiery utilities	1-68
Configuring the connection for Command WorkStation	1-70
Installing Color files from the User Software CD	1-75
Installing the ICC profiles on a Windows computer	1-76

Loading the monitor settings file	1-76
Loading the ICC printer device profile	1-78
Installing the printer description files for Windows	1-80

Chapter 2: Installing User Software on a Mac OS Computer

Setting up the Sharp AR-C360P as a PostScript printer	2-81
Setting up Mac printer drivers and printer description files	2-81
Installing Fiery software and fonts	2-82
Configuring a connection for ColorWise Pro Tools	2-84
Configuring a connection for Fiery Spooler	2-87
Configuring a connection for Fiery Downloader	2-89
Configuring the connection for Command WorkStation LE for Mac OS X	2-91
Installing color files from CD2	2-93
Loading ICC profiles	2-95
Loading the monitor settings file	2-97
Loading the ICC printer profile	2-98

Chapter 3: Setting Up Fiery WebTools

Setting up Fiery WebTools	3-99
----------------------------------	------

Chapter 4: Troubleshooting

On a Windows computer	4-100
Setting up printing on Windows NT 4.0 or Windows 2000/XP/Server 2003 computers	4-100
Reinstalling the Adobe PostScript Printer Driver on Windows 98/Me	4-100
Problems with the Fiery utilities on Windows computers	4-101
On a Mac OS computer	4-101
Setting up the Fiery in the Mac OS 9 Chooser	4-101
Setting up the Fiery in the Mac OS X Print Center	4-102

Index	103
-------	-----

About the Documentation

This manual is part of a set of Fiery Network Controller for Sharp AR-C360P , herein referred to as the “Fiery,” documentation that includes the following manuals for users and system administrators. Most are available as Acrobat PDF (Portable Document Format) files on the User Documentation CD.

- The *User Software Installation Guide* describes how to install software from the User Software CD to enable users to print to the Fiery Network Controller for Sharp AR-C360P with the EFI PostScript driver, and also describes setting up printing connections to the Fiery.
- The *Configuration Guide* explains basic configuration and administration of the Fiery for the supported platforms and network environments. It also includes guidelines for setting up UNIX, Windows NT 4.0/2000/Server 2003, and Novell NetWare servers to provide printing services to users.
- The *Printing Guide* describes the printing features of the Fiery for users who send jobs from their computers using the EFI PostScript driver.
- The *Color Guide* provides information on managing the color output of the Fiery. It explains how to calibrate your Fiery and take advantage of the ColorWise® color management system, as well as features in ColorWise Pro Tools™.
- The *Fiery color Reference* addresses concepts and issues associated with managing color output of the Fiery and outlines key workflow scenarios. In addition, it offers information on printing color documents from popular Microsoft Windows and Apple Mac OS applications.
- The *Job Management Guide* explains the functions of the job management utilities, including Command WorkStation™, Command WorkStation LE™, and DocBuilder Pro™, and how you can use them to monitor and control jobs on the Fiery. This manual is intended for an operator or administrator, or a user with the necessary access privileges, who monitors and manages job flow, performs color calibration, and troubleshoots problems that may arise.

Introduction

This manual describes how to install user software for the Fiery Network Controller for Sharp AR-C360P and how to set up printing from Microsoft Windows and Apple Mac OS computers. For information about setting up network servers and clients to use the Fiery, see Chapter 2 of the *Configuration Guide*. For general information on using your computer, application software, or network, see the manuals that accompany those products.

Note: The term “Fiery” is used in this manual to refer to the Fiery Network Controller for Sharp AR-C360P. The name “Aero” is used in illustrations to represent the Fiery. The term “Windows” is used to refer to Windows 98, Windows Me, Windows NT 4.0, Windows 2000, Windows XP, and Windows Server 2003, wherever appropriate.

The Fiery includes support for Fiery WebTools™ and software for Command WorkStation, which enables an operator to manage all jobs sent to the Fiery. Although it may not be the case at all sites, the documentation for this product assumes the presence of an operator who controls and manages jobs sent by users from remote workstations.

About this manual

This manual covers the following topics:

- Installing printer files on Windows and Mac OS computers
- Setting up printing connections on Windows and Mac OS computers
- Installing Fiery® utilities and other user software on Windows and Mac OS computers

Fiery WebTools

Fiery WebTools allow you to manage your Fiery remotely from the Internet or from your company's intranet. You access Fiery WebTools from the Fiery WebTools home page.

Fiery WebTools	Summary	For more information
Status	Shows you the jobs currently processing and printing.	See Chapter 8 of the <i>Printing Guide</i> .
WebLink	Provides a link to another web page, provided you have a valid Internet connection.	See the <i>Printing Guide</i> Chapter 8 and the <i>Configuration Guide</i> Chapter 6.
WebDownloader	Allows you to download PostScript, PCL, EPS, and PDF files to the Fiery.	See the <i>Printing Guide</i> .
WebSetup (Windows only)	Allows you to modify the Fiery configuration (Setup) remotely. This function requires the Administrator password, if one has been set.	See the <i>Configuration Guide</i> .

System requirements

To install the Fiery user software on a Windows or Mac OS computer, the computer must be equipped with a built-in or external CD-ROM drive. The following table lists the minimum system requirements.

Minimum requirements for	Windows 98/Me	Windows NT 4.0	Windows 2000/XP/Server 2003	Mac OS
Operating system	Windows 98/Me	Windows NT with NT Service Pack 6	Windows 2000 with Service Pack 4 Windows XP with Service Pack 1 Windows Server 2003 Standard Edition, Enterprise Edition, or Datacenter Edition, all the 32-bit version (printer driver only supported)	Mac OS 8.6 to 9.2 Mac OS X 10.1 to 10.3 Classic Mode Mac OS X 10.2.1 or higher Native Mode
Memory for printing and Fiery utilities (Fiery Downloader™, ColorWise Pro Tools, and Fiery Spooler [Mac OS only])	8MB of RAM for printing 128MB of RAM for printing and utilities			32MB of RAM for printing 64MB of RAM for utilities
Networking protocol	IPX/SPX, TCP/IP, or AppleTalk			AppleTalk (EtherTalk supported) TCP/IP (required for MAC OS X 10.2 or later)

Minimum requirements for	Windows 98/Me	Windows NT 4.0	Windows 2000/XP/Server 2003	Mac OS
Networking protocol for Fiery® utilities	TCP/IP			TCP/IP (required for MAC OS X 10.2 or later) (EtherTalk supported) Note: AppleTalk can be used for Fiery Downloader. Fiery WebTools™ is supported with Classic Mode only.
PostScript printer driver	Adobe PostScript Printer Driver for Windows (included with user software)	Adobe PostScript Printer Driver for Windows NT (included with user software)	Microsoft PostScript Printer Driver for Windows 2000/XP/Server 2003 (included with Windows 2000/XP/Server 2003 operating systems) The PostScript Printer Description (PPD) files for Windows XP are provided for Windows Server 2003	Adobe PostScript Printer Driver (included with user software)
PCL printer driver	PCL Printer Driver for Windows only (included on CD1)			

Minimum requirements for	Windows 98/Me	Windows NT 4.0	Windows 2000/XP/Server 2003	Mac OS
Fiery WebTools™	<ul style="list-style-type: none"> Java-enabled web browser: Internet Explorer v5.5 or higher with SP2 (Windows 98/Me/NT 4.0/2000) Internet Explorer v6.0 (Windows 2000/XP/Server 2003) Internet Explorer v5.0 for Mac OS <p>Note: Microsoft releases frequent updates to its browsers. As support cannot be guaranteed for all versions, use the versions specified for best results.</p> <ul style="list-style-type: none"> A monitor and video memory that supports 16-bit color at a minimum resolution of 800X600 A TCP/IP-enabled network and the IP address or DNS name of the Fiery Web Services enabled on the Fiery 			
Command WorkStation (Windows only)	<ul style="list-style-type: none"> Windows-based computer with a 200-MHz or greater Pentium processor 60MB of available hard disk space for installation At least 2X CD-ROM drive A monitor that supports 16-bit color at a minimum resolution of 1024X768 128MB of RAM Video adapter card with 2MB of video memory TCP/IP networking protocol installed 			—
Command WorkStation LE (Mac OS X Native Mode)	<ul style="list-style-type: none"> 300MHz Apple Macintosh G3 128MB RAM 80MB hard disk space (installation) 500MB hard disk space—recommended for generating full previews of raster files and handling large PS/PDF files Operating system—MAC 10.2.4 or later Java for Mac OS X—Java 2 Platform, Standard Edition, version 1.3.1 <p>Note: More system resources (RAM and hard disk space) and a faster processor will lead to better system performance.</p>			
DocBuilder Pro (available as an option) on Command WorkStation (Windows only)	<p>In addition to requirements for Command WorkStation:</p> <ul style="list-style-type: none"> Windows-based computer with 333-MHz Pentium processor 90MB of available hard disk space Dongle to be installed on parallel port for every client workstation 			—
Parallel port	24MB of RAM	32MB of RAM	64MB of RAM	

Other Network Requirements	
UNIX (TCP/IP) workstation	<ul style="list-style-type: none">• Standard TCP/IP connectivity (for example, Sun SPARCStation or Silicon Graphics workstation with Solaris version 2.5 or later, or SunOS version 4.1.x software)• TCP/IP printing software that conforms to RFC1179 (Berkeley lpd protocol)
IPX (Novell) network	<ul style="list-style-type: none">• Novell server• Novell NetWare software version 4.x or 5.x• NDPS gateway in Netware 5.x• Support for Ethernet SNAP, Ethernet II, Ethernet 802.3, and Ethernet 802.2 frame types

Chapter 1: Installing User Software on a Windows Computer

This chapter describes the procedures for installing software and setting up printing from a computer using a supported version of Windows (Windows 98/Me, NT 4.0, 2000, XP or Server 2003).

The general steps for installing the software are as follows:

- Install the PostScript printer driver or PCL printer driver and corresponding printer driver files and set up the printer driver to communicate with the Sharp AR-C360P.
- Install Fiery utilities and user software—EFI Fiery Mail Port, Fiery Remote Scan, Fiery Downloader, Fiery Printer Delete Utility, ColorWise Pro Tools, and Command WorkStation.

Note: If the computer is not intended to be used by the Sharp AR-C360P administrator, Command WorkStation may not be required.

- Configure the connection for Fiery utilities and user software.
- Copy additional files from CD1 as required.

Setting up PostScript or PCL printing with Windows 98/Me

To set up the Fiery as a PostScript or PCL printer, you must install the PostScript or PCL printer driver for Windows 98/Me and, for PostScript, the corresponding printer description file. You must also configure either a local connection for printing directly or a network connection for printing over the network.

If you are printing using SMB (Server Message Block), you can connect to the Fiery and install the printer drivers in a single procedure. For more information, see ["Setting up SMB printing with Windows 98/Me"](#) on page 1-29.

Note: The procedures for setting up printing with the PostScript and PCL printer drivers are similar. Either can, and should, be installed using the Installer program on CD1 supplied with the Sharp AR-C360P.

Installing the PostScript or PCL printer driver for Windows 98/Me

The following procedure describes installing the printer driver from CD1. Subsequent procedures describe configuring installable options and setting up the printer connection.

Note: It is strongly recommended that you use the supplied Drivers CD (CD1) to install the printer drivers. This will automatically also install the Sharp LPR utility, which greatly simplifies network connection to the printer over a TCP/IP connection. If you choose to use the standard Windows Add Printer Wizard, you will need to install this utility from the CD afterwards if you require these features.

To install the PostScript or PCL printer driver for Windows 98/Me

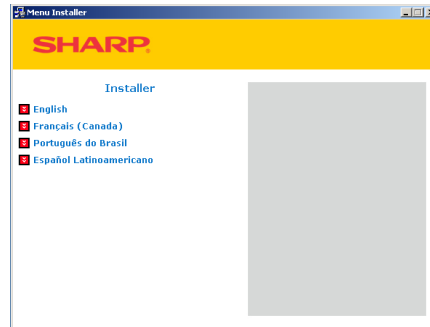
1. Insert CD1 into your CD drive and wait for the CD to autorun the setup program.

1

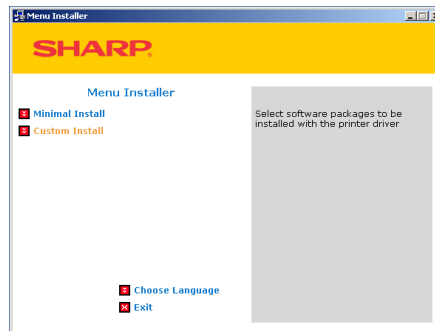
1-18 Installing User Software on a Windows Computer

If the CD does not autorun navigate to the CD root directory and double-click the setup.exe program to start the installer.

2. Choose your preferred language for the installer.



3. From the next screens after accepting the licensing agreement, follow the on-screen instructions to complete the driver installation.



You can run this procedure twice if you want more than one driver installed. For example, if you want the EFI PostScript driver and the PCL driver run the procedure once for each driver and choose the required driver each time. Choose a name for the installed driver that will indicate which driver and printer it is for.

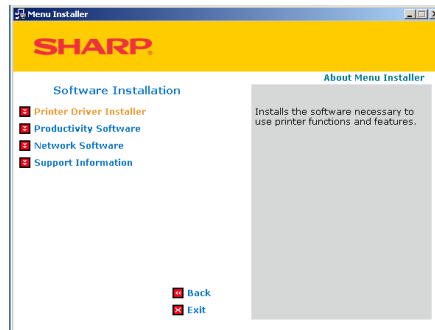
For networked printers the installer will also install the Sharp LPR program, which makes connecting the printer over TCP/IP networks easy, and the Network Extension, which enables the driver to query the printer and automatically enable any optional hardware installed on it.

1

1-19 Setting up PostScript or PCL printing with Windows 98/Me

For the Fiery PS driver the installer will also install the Job Monitor utility so that you can monitor the status of the printer and your print jobs directly from the Windows desktop.

4. When driver installation is complete you may wish to install other software utilities from the main installer screen. Information about each is available on the installer screen.



Configuring installed options

After you have completed the printer driver installation, you may configure the driver for the optional hardware installed on the Sharp AR-C360P. This allows the driver to take advantage of these options. You can configure the options manually or, for TCP/IP network connections, you can use the Two-Way Communication feature to configure the options automatically.

Configuring installed options manually

The following procedure describes how to manually configure the Fiery for the options installed on the printer.

To configure options manually for Windows 98/Me

1. Click Start, choose Settings, and then choose Printers.
2. Right-click the appropriate printer icon and choose Properties from the context menu.
3. Click the Installable Options (PS) or Device Options (PCL) tab.
4. Select an installed option from the Available Options list.
5. In the PS driver click Add to move the option to the Installed Options list. This is not necessary in the PCL driver.
6. Click Apply, and then click OK.

Configuring installed options and updating print options settings automatically

If you have a TCP/IP-enabled network, you can automatically update your printer driver to reflect the options currently installed on the printer. When the printer driver is first installed, the options have default settings that were set up in Fiery Setup or ColorWise Pro Tools. When you update the printer driver with the Two-Way Communication feature, you allow the Fiery to complete the actual setting.

The Two-Way Communication feature also updates Expert Color Settings options to reflect the current Color settings on the Fiery. To access the Expert Color Settings options, click the Expert Settings tab in the ColorWise print option bar of the Fiery printing tab of your PS printer driver. For more information, see Chapter 1 of the *Color Guide*.

To configure installed options and update print options settings automatically for Windows 98/Me

1. In the Installable Options (PS) or Device Options (PCL) tab, select Two-Way Communication.
2. Type the Sharp AR-C360P's IP address or DNS name.
3. In the PS driver, to display the Sharp AR-C360P's current default settings when opened, select Update Fiery Driver When Opened.
4. Click Update.
5. In the PS driver, to receive an e-mail notification after your job has been printed, select Enable E-mail Notification, and type in the e-mail address to which notification should be sent.

You will also receive e-mail notification of any errors that occur during printing.

Note: Enable E-mail Notification is displayed only if Email Service is enabled at Setup.

6. Click OK.

Completing the Windows 98/Me printer connection

To print from Windows 98/Me, you should already have set up network servers, if any, and set up the Fiery to accept print jobs from your computer.

To complete the Windows 98/Me connection, you must configure a connection on each Windows computer for the network.

Completing the Windows 98/Me parallel port connection

Preparing a parallel port connection for Windows 98/Me requires specific BIOS settings on your computer, and specific port and printer settings for Windows 98/Me. In addition, the administrator may need to change the parallel port timeout in Fiery Setup if you choose to spool files to the Fiery, rather than print directly.

To prepare the Fiery and your computer for parallel port printing

1. Connect the Fiery to the parallel port on your computer.
For instructions, see Chapter 1 of the *Configuration Guide*.
2. In Network Setup>Port Setup>Parallel Port Setup on the printing unit Control Panel, set Enable Parallel Port to Yes.
For more information about Fiery Setup, see Chapter 4 of the *Configuration Guide*.
3. If you want to spool files to the Fiery, set Port Timeout in Seconds to 10. If you want to print directly to the Fiery, set Port Timeout in Seconds to 5.
4. In your computer's BIOS settings, set Parallel Port Mode to ECP.
To access the BIOS settings, restart the computer and press the key indicated on your monitor as soon as the computer starts up. You may have to scroll through several menus to reach the parallel port settings. After setting the Parallel Port Mode to ECP, save your changed setting and exit.

To prepare the printer for parallel port printing

1. Click Start, choose Settings, and then choose Printers.
2. Click the appropriate printer icon and choose Properties from the File menu.
3. Click the Details tab, and in the "Print to the following port" menu, select LPT 1: (ECP Printer Port).

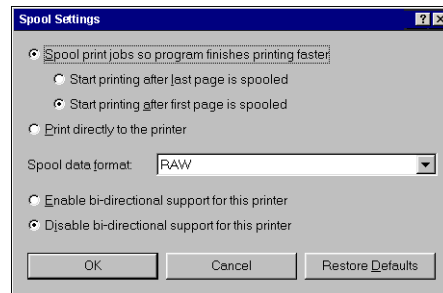
Note: Check this selection carefully. It may read LPT 1: (Printer Port), which is *not* equivalent to LPT 1: (ECP Printer Port).

If this box does *not* read LPT 1: (ECP Printer Port), change the port setting now, as described in “To prepare the port for parallel port printing” on [page 1-24](#), and then return to this procedure. You may need your Windows System CD.

4. If you changed the selection in the “Print to the following port” menu, click Apply.

A Warning dialog box may appear, stating that fonts you downloaded to the previously selected port may be lost; click OK.

5. Click Spool Settings.



6. Select either “Spool print jobs so program finishes printing faster” or “Print directly to the printer.”

The selection you make depends on the port timeout you set in [step 3](#) on [page 1-22](#):

- If you set the Port Timeout in Seconds to 10, you can select either option; however, spooling is faster.
- If you set the Port Timeout in Seconds to 5, select “Print directly to the printer.”

7. Select “Disable bi-directional support for this printer” and click OK.
8. Click Apply.

You are now ready to print from your applications to the Fiery with the parallel port. To confirm the connection, print a Test page.

1

1-24 Installing User Software on a Windows Computer

9. Click the General tab.
10. Click Print Test Page and click OK.
11. In the Job Notes field, type user and job identification information, and click OK.

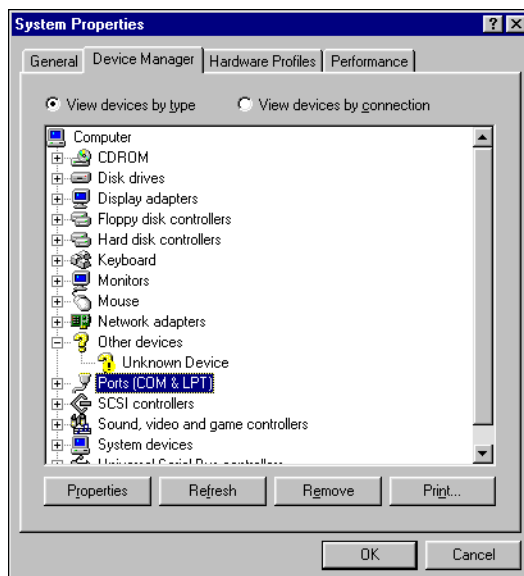
If the Test page prints successfully, you are ready to print from the computer.

Perform the following procedure in Windows 98/Me only if the LPT1 port is not currently set to ECP Printer Port.

To prepare the port for parallel port printing in Windows 98/Me

1. Click Start, choose Settings, and then choose Control Panel.
2. Double-click System.
The System Properties dialog box appears.
3. Click the Device Manager tab.

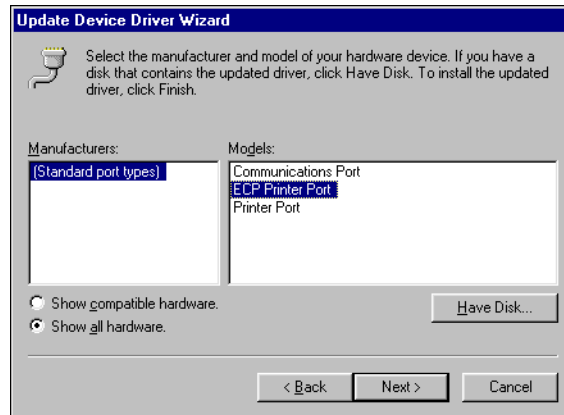
4. Double-click Ports.



5. Double-click the port with LPT1 in its name.
6. In the (LPT1) Properties dialog box, click the Driver tab and then click Update Driver.
The Update Device Driver Wizard dialog box appears.
7. Click Next.



8. Select "Display a list of all the drivers in a specific location, so you can select the driver you want," and then click Next.
9. Select "Show all hardware."
10. From the Manufacturers list, select "(Standard port types)." From the Models list, select "ECP Printer Port" (*not* Printer Port). Click Next.



11. Click Yes in the Update Driver Warning dialog box.
12. Click Next.
13. Click Finish, then close the Printer Port Properties and System Properties dialog boxes.

You must restart your computer to activate the new settings. After Windows 98/Me restarts, complete the procedure described in ["To prepare the printer for parallel port printing"](#) on page 1-22.

Completing the Windows 98/Me IPX/SPX or IPX (Novell) connection

If you are printing through a Novell server, the Novell network and file server should be set up before you begin. The file server should be configured with a print server and print connection for the Sharp AR-C360P. For details, see your NetWare documentation and Chapter 2 of the *Configuration Guide*.

To print from Windows 98/Me computers over IPX (Novell), you must first set up IPX/SPX protocols, and then configure the Sharp AR-C360P by choosing the IPX frame type and entering the settings for the port you use.

To select a frame type for IPX/SPX printing for Windows 98/Me

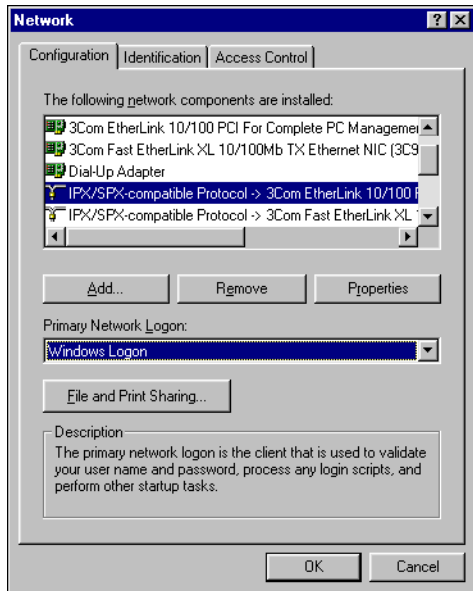
1. Click Start, choose Settings, and then choose Control Panel.

2. Double-click the Network icon.

Make sure that IPX/SPX-compatible Protocol is listed in the installed network components pane.

For instructions, see your Windows 98/Me documentation or contact Microsoft Technical Support.

3. Double-click the IPX/SPX-compatible Protocol icon.

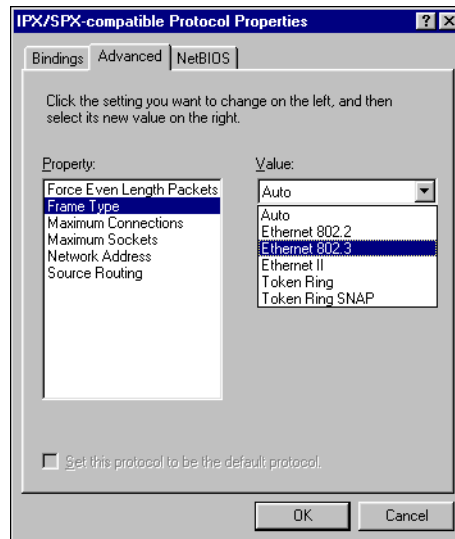


4. Click the Advanced tab.
5. Select Frame Type in the Property list.

6. In the Value menu, choose the Frame Type that corresponds to the one set in Fiery Network Setup.

If necessary, print the Configuration page from the printing unit Control Panel to determine which frame type(s) are configured.

Note: Do not select Auto. Auto may not select the frame type specified on the Sharp AR-C360P.



7. Click OK and close the Network Control Panel.
8. When prompted to restart your computer, click Yes.

To set up a port for IPX (Novell) printing with Windows 98/Me

1. Click Start, choose Settings, and then choose Printers.
2. Click the appropriate printer icon and choose Properties from the File menu.
3. Click the Details tab and click Add Port.
A list of connection options appears.

4. In the Add Port dialog box, specify the network path or click Browse for a display of your network environment.
5. If you are using a NetWare file server, double-click the icon for the NetWare file server to use for printing to the Sharp AR-C360P.
6. Click the printer icon for the NetWare print queue you want to use, and then click OK.
7. In the Add Port dialog box, verify that the network path is updated and click OK.

Your print jobs are transmitted to the specified print queue on the Novell file server. The Sharp AR-C360P polls the file server, and if jobs are present, they are transmitted to the Fiery.

8. To confirm the connection, click the General tab, click Apply, and then click Print Test Page.

After the Test page prints successfully, you are ready to print from the computer.

Setting up SMB printing with Windows 98/Me

SMB printing (also known as Windows or WINS printing) allows you to print to a particular connection (Hold, Print, or Direct) without a network server PC. To set up SMB printing, you must have the TCP/IP protocol and Client for Microsoft Networks installed.

Note: This procedure should not be necessary if you installed the driver from the CD installer program. That program installs the Sharp LPR utility along with the driver and sets up the network connection for you.

Each connection (Hold, Print, or Direct) requires a new printer driver and printer description file. Repeat the procedure ["To set up SMB printing on Windows 98/Me"](#) for each connection. If you install more than one printer, give each a descriptive name during printer driver installation, such as Aero-Print or Aero-Hold, so you can easily identify printers.

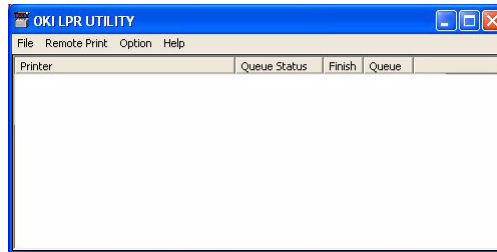
Before you begin

- Configure the Fiery for SMB printing in Run Setup>Network Setup>Service Setup>Windows Setup.

SMB printing is referred to as Windows Printing in Setup, on the Control Panel Map, and on the Configuration page.

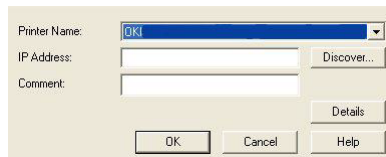
To set up SMB printing on Windows 98/Me

1. Run the Sharp LPR utility on the Windows 98 PC.



This utility will have been installed along with the driver if you installed it from the Drivers CD (CD1). If not, you will first need to install it from the available utilities on that CD.

2. Choose Remote Print>Add Printer.



Choose the Printer Name of your Sharp AR-C360P from the list of installed drivers.

3. Enter the Sharp AR-C360P's IP address and any comments you wish to add.

Note: You can also locate the printer using the Discover button.

If you are not able to locate your Sharp AR-C360P, contact your network administrator.

4. Click OK.

Note: For a description of each print connection, see Chapter 3 of the *Configuration Guide*.

Setting up IPP printing with Windows 98/Me

With Internet Printing Protocol (IPP), print jobs are sent to the Fiery over the Internet.

IPP printing is supported on Windows 2000/XP but can be enabled on Windows 98/Me computers by installing the wnpins.exe client file (available on the Windows Me CD or the Windows 2000 Server CD). For more information about obtaining and installing this client, contact Microsoft Technical Support.

Note: The IPP setup procedures are performed after installing the appropriate printer drivers. See ["To install the PostScript or PCL printer driver for Windows 98/Me"](#) on page 1-17.

Before you begin

1. Prepare the Fiery for TCP/IP printing.
2. Make sure the Fiery is configured for IPP printing.
For more information, see the *Configuration Guide*.
3. Specify the printing destination on your computer.

To set up IPP printing with Windows 98/Me

1. Click Start, choose Settings, and then choose Printers.
2. In the Printers windows, right-click the icon for the Fiery PostScript printer driver and choose Properties.
3. Click the Details tab and click Add Port.
The Add Port dialog box appears.
4. Enter the network path for the printer.
5. Click OK.

Setting up PostScript or PCL printing with Windows NT 4.0

To set up the Fiery as a PostScript or PCL printer, you must install the PostScript or PCL printer driver for Windows NT 4.0 and the corresponding printer description files. You must also configure the print connection between the computer and the Fiery. If you are printing over a network, you must configure a network connection. If you are printing directly to the printer, you must configure a parallel port connection.

Note: The procedures for setting up printing with the PostScript and PCL printer drivers are similar. The following illustrations show the PostScript driver. Any differences are noted.

Installing the PostScript or PCL printer driver for Windows NT 4.0

The procedure for installing the printer driver(s) for Windows NT 4.0 is similar to that for installing under Windows 98. If you follow that procedure, installing from the included Drivers CD (CD1), the LPR and Network Extension utilities are automatically included in the installation, and the network connection on TCP/IP networks is established automatically by the installer.

To install the PostScript or PCL printer driver for Windows NT 4.0

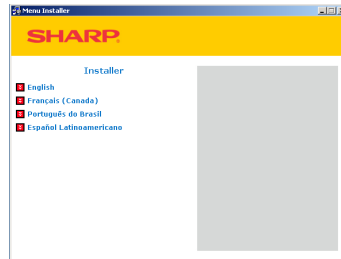
1. Insert CD1 into your CD drive and wait for the CD to autorun the setup program.

If the CD does not autorun navigate to the CD root directory and double-click the setup.exe program to start the installer.

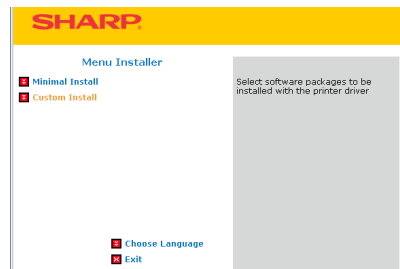
1

1-34 Installing User Software on a Windows Computer

2. Choose your preferred language for the installer.



3. From the next screens after accepting the licensing agreement, follow the on-screen instructions to complete the driver installation.



4. Click Install Driver to begin installing the required printer driver and follow the on-screen instructions to complete the driver installation.

You can run this procedure twice if you want more than one driver installed. For example, if you want the EFI PostScript driver and the PCL driver run the procedure once for each driver and choose the required driver each time. Choose a name for the installed driver that will indicate which driver and printer it is for.

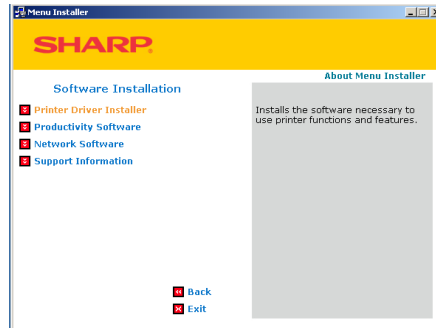
For networked printers the installer will also install the Sharp LPR program, which makes connecting the printer over TCP/IP networks easy, and the Network Extension, which enables the driver to query the printer and automatically enable any optional hardware installed on it.

For the Fiery PS driver the installer will also install the Job Monitor utility so that you can monitor the status of the printer and your print jobs directly from the Windows desktop.

1

1-35 Setting up PostScript or PCL printing with Windows NT 4.0

5. When driver installation is complete you may wish to install other software utilities from the main installer screen. Information about each is available on the installer screen.



Configuring installed options

After you have completed the printer driver installation, you must configure the driver to reflect any optional hardware installed on the Sharp AR-C360P. This allows the driver to take advantage of these features. You can configure the options manually; or for TCP/IP network connections, you can use the Two-Way Communication feature to configure the options automatically.

Configuring installed options manually

The following procedure describes how to manually configure the driver for the options installed on the printer.

To configure installable options from the printer driver for Windows NT 4.0

1. Click Start>Settings>Printers.
2. Right-click the appropriate printer icon and choose Properties from the context menu.
3. Click the Installable Options (PS) or Device Options (PCL) tab.
4. Select an installed option from the Available Options list.
5. In the PS driver click Add to move the option to the Installed Options list. This is not necessary in the PCL driver.
6. Click Apply, and then click OK.

You are ready to connect to your network type (see ["Completing the Windows NT 4.0 printer connection"](#) on page 1-37).

Configuring installed options and updating print options settings automatically

If you have a TCP/IP-enabled network, you can automatically update your printer driver to reflect the options currently installed on the Sharp AR-C360P. When the printer driver is first installed, the installable options have default settings that were set up in Fiery Setup or ColorWise Pro Tools. When you update the printer

driver with the Two-Way Communication feature, you allow the Sharp AR-C360P to complete the actual setting.

The Two-Way Communication feature also updates Expert Color Settings options to reflect the current Color settings on the Fiery. To access Expert Color Settings options, click the Expert Settings tab in the ColorWise print option bar of the Fiery printing tab of your printer driver. For more information, see Chapter 1 of the *Color Guide*.

To set up Two-Way Communication in the printer driver for Windows NT 4.0

1. In the Installable Options (PS) or Device Options (PCL) tab, select Two-Way Communication.
2. Type the Sharp AR-C360P's IP address or DNS name.
3. In the PS driver, to display the Sharp AR-C360P's current default settings when opened, select Update Fiery Driver When Opened.
4. Click Update.
5. In the PS driver, to receive an e-mail notification after your job has been printed, select Enable E-mail Notification, and type in the e-mail address to which notification should be sent.

You will also receive e-mail notification of any errors that occur during printing.

Note: Enable E-mail Notification is displayed only if Email Service is enabled at Setup.

6. Click OK.

Completing the Windows NT 4.0 printer connection

To print from Windows NT 4.0, you must:

- Set up network servers, if any.
- Set up the Fiery to accept print jobs from your computer.

- Configure a port on each Windows NT 4.0 computer for the network type.

To do this	See
Configure the parallel connection	Required for printing locally via parallel port. See "Completing the Windows NT 4.0 parallel port connection" in this section.
Configure the TCP/IP (LPR port) connection	Done automatically during driver installation from CD.
Configure the IPX (Novell) connection	Required for printing via a NetWare server. See "Completing the Windows NT 4.0 IPX (Novell) connection" on page 1-39.

Completing the Windows NT 4.0 parallel port connection

The parallel port cable connects the Fiery to a single computer. Once you have installed the Windows NT 4.0 PostScript printer driver and the Fiery printer description files, complete the setup for parallel port printing.

To set up parallel printing for Windows NT 4.0

1. Click Start, choose Settings, and then choose Printers.
2. Double-click the Fiery icon and choose Properties from the Printer menu.
In the Ports tab, confirm that LPT1 (Local Port) is checked.
The Fiery is ready to accept parallel print jobs from your computer, using the Windows NT 4.0 PostScript printer driver and the Fiery printer description file.
3. Click the General tab and click Print Test Page.
4. To share the printer on the network, click the Sharing tab.
Select whether to share the printer, and specify the operating systems used by network clients.

5. Click OK to exit the Printer Properties dialog box.

Completing the Windows NT 4.0 IPX (Novell) connection

Complete the setup for the IPX (Novell) connection as follows:

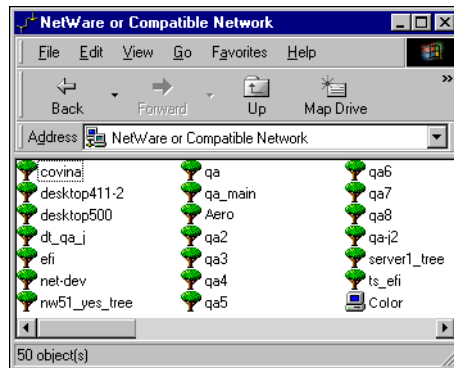
- Configure the Novell network and file server for handling Fiery print jobs. The file server should be configured with a print server and print connection for the Fiery. For details, see your NetWare documentation.
- Prepare the Fiery for IPX printing.
- Set up the IPX connection on the computer.

NetWare protocols (NWLink IPX/SPX Compatible Transport) and NetWare client services should already be installed on the Windows NT 4.0 computer.

To set up IPX (Novell) printing for Windows NT 4.0

1. Double-click Network Neighborhood.
2. Double-click NetWare or Compatible Network.

A list of NetWare servers appears.



3. Double-click the NetWare Tree or File Server on which the network administrator defined a print connection for the Fiery.

You may have to log in to the file server to see the print connections.

4. Double-click the print connection defined for the Fiery.
5. If the NetWare server does not have a suitable driver for the Fiery, you may be asked if you want to set up the printer on your computer. Click Yes.
6. Insert the Drivers CD (CD1) and click OK to install the Fiery PostScript printer driver.

If the CD Installer window opens and prompts for your preferred language, simply close the window.

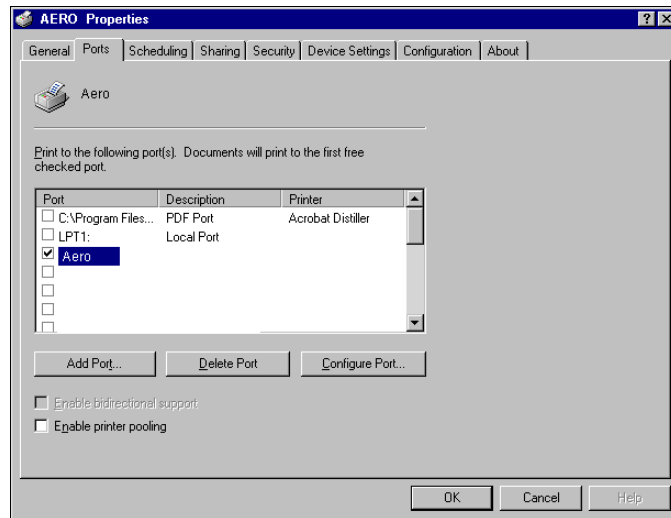
7. In the dialog box displaying lists of manufacturers and printers, click Have Disk.

The Install from Disk dialog prompts you for a disk.

8. Type the name of your CD driver (for example, D:\) and click Browse.
9. Browse to the \Drivers\<language>\nt40\PS (or PCL) folder and click Open.

The selected path is copied to the Install from Disk dialog.

10. In the Printers list, select the driver for your printer model and click OK. When installation is complete, a new printer window appears, with the name of the print queue on the NetWare server.
11. Choose Properties from the File menu and click the Ports tab. Verify that the connection to the NetWare queue is listed and selected as a port for the Fiery.



12. Click the General tab and click Print Test Page.
13. In the printer Job Notes window, type user and job identification information and click OK.

The Test page remains listed in the queue window until it is printed.

The Fiery polls the NetWare server for print jobs in the print connection defined for the Fiery. When you print, your PostScript files are spooled to that connection and transmitted over the queue "port" to the Fiery.

Setting up SMB printing on Windows NT 4.0

SMB printing (also known as Windows printing) allows you to install the PostScript or PCL printer driver and printer description files, and print from your computer to a particular print connection (Hold, Print, or Direct) on the Fiery. These instructions assume you have installed the TCP/IP protocol and Client for Microsoft Networks.

Each connection (Hold, Print, or Direct) requires a new printer driver and printer description file. To set up printing to a second or third print connection, repeat the procedure ["To set up SMB printing on Windows NT 4.0"](#) on page 1-42. If you install more than one printer, give each a descriptive name during printer driver installation, such as Aero-Print or Aero-Hold, so you can easily identify printers.

Note: To change printer defaults and configure installable options from Windows NT 4.0, you must log on with the special log-in name, 'efi_admin_efi' (instead of Administrator) and use the password specified in Fiery Setup. If you log on as a User, you can install the printer driver through Point and Print, but you cannot modify printer defaults and configure installable options.

Before you begin

- Configure the Fiery for SMB printing in Run Setup>Network Setup>Service Setup>Windows Setup.

SMB printing is referred to as Windows Printing in Setup, on the Control Panel Map, and on the Configuration page. For more information, see Chapter 2 of the *Configuration Guide*.

To set up SMB printing on Windows NT 4.0

1. Double-click Network Neighborhood.



2. Browse for the printer you want to print to.

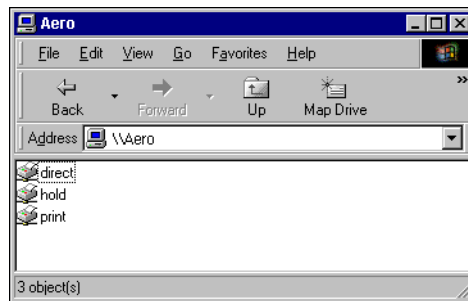
The printer name you are browsing for is the name entered in Network Setup > Service Setup > Windows Setup > Server Name. For this information, see the Configuration page.

The amount of network traffic determines the amount of time required for the Browse function.

Note: You can also locate the printer with the Find feature on your Windows computer. Click Start, choose Find, and then choose Computer. Enter the name of the printer, and click Find Now.

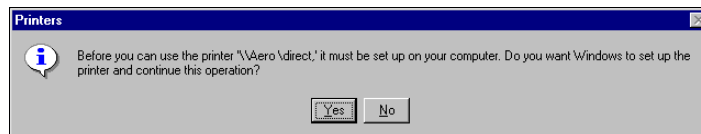
If you are not able to locate your Sharp AR-C360P, contact your network administrator.

3. Double-click the name of the Fiery to display enabled print connections.



4. Double-click the name of the connection you want to print to.

The Printers dialog box appears, asking whether you want to set up the printer.



5. Select Yes to complete the installation for the selected connection.

Windows NT 4.0 downloads the printer driver and printer description files from the Fiery to your computer and installation is complete.

Setting up PostScript or PCL printing with Windows 2000/XP/Server 2003

To set up the Fiery as a PostScript or PCL printer, you must install the PostScript or PCL printer driver for Windows 2000/XP/Server 2003 and the corresponding printer description files. You must also configure the print connection between the computer and the Fiery. If you are printing over a network, you must configure a network connection. If you are printing directly to the printer, you must configure a parallel port connection.

Note: For Windows Server 2003, use the Windows XP printer driver.

Note: The procedures for configuring the options for the PostScript and PCL printer drivers are similar.

Installing the PostScript or PCL printer driver for Windows 2000/XP/Server 2003

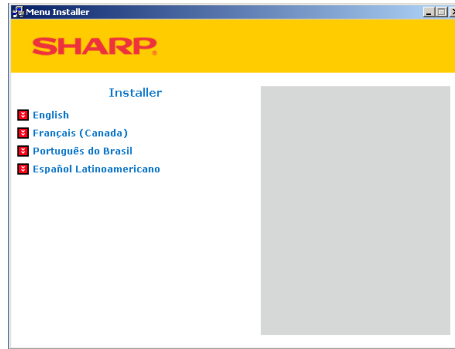
The following procedure describes installing the printer driver from the Drivers CD (CD1). Subsequent procedures describe setting up the print connection.

To install the PostScript or PCL printer driver for Windows 2000/XP/Server 2003

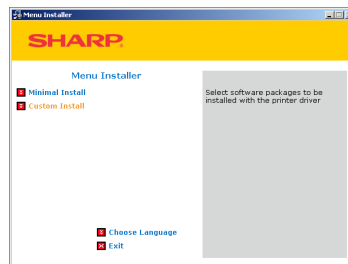
1. Insert CD1 into your CD drive and wait for the CD to autorun the setup program.

If the CD does not autorun navigate to the CD root directory and double-click the setup.exe program to start the installer.

2. Choose your preferred language for the installer.



3. From the next screens after accepting the licensing agreement, follow the on-screen instructions to complete the driver installation.



4. Click Install Driver to begin installing the required printer driver and follow the on-screen instructions to complete the driver installation.

You can run this procedure twice if you want more than one driver installed. For example, if you want the EFI PostScript driver and the PCL driver run the procedure once for each driver and choose the required driver each time. Choose a name for the installed driver that will indicate which driver and printer it is for.

For networked printers the installer will also install the Sharp LPR program which makes connecting the printer over TCP/IP networks easy.

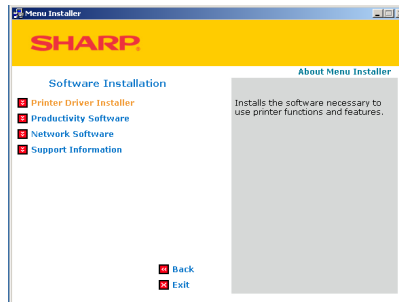
The installer will also install the Network Extension, which enables the driver to query the printer and automatically enable any optional hardware installed on it.

1

1-46 Installing User Software on a Windows Computer

For the Fiery PS driver the installer will also install the Job Monitor utility so that you can monitor the status of the printer and your print jobs directly from the Windows desktop.

5. When driver installation is complete you may wish to install other software utilities from the main installer screen. Information about each is available on the installer screen.



Configuring installed options

After you have completed the printer driver installation, you must configure the Fiery to reflect the options installed on the printer. This allows the Fiery to take advantage of these options. You can configure the options manually; or for TCP/IP network connections, you can use the Two-Way Communication feature to configure the options automatically.

Configuring installed options manually

The following procedure describes how to manually configure the Fiery for the options installed on the printer.

To configure installable options on the Fiery from the PostScript printer driver for Windows 2000/XP/Server 2003

1. Windows 2000: Click Start, choose Settings, and then choose Printers.

Windows XP: Click Start, and choose Printers and Faxes.

Windows Server 2003: Click Start, choose Control Panel, and then choose Printers and Faxes.
2. Right-click the appropriate printer icon and choose Properties.
3. Click the Installable Options (PS) or Device Options (PCL) tab.
4. Select an installed option from the Available Options list.
5. In the PS driver click Add to move the option to the Installed Options list. This is not necessary in the PCL driver.
6. Click OK to activate the current settings.

You are ready to connect to your network type (see the next section ["Completing the Windows 2000/XP/Server 2003 printer connection"](#)).

Configuring installed options and updating print options

settings automatically

If you have a TCP/IP-enabled network, you can automatically update your printer driver to reflect the options currently installed on the Fiery. When the printer driver is first installed, the installable options have default settings that were set up in Fiery Setup or ColorWise Pro Tools. When you update the printer driver with the Two-Way Communication feature, you allow the Fiery to complete the actual setting.

The Two-Way Communication feature also updates Expert Color Settings options to reflect the current Color settings on the Fiery. To access the Expert Color Settings options, click the Expert Settings tab in the ColorWise print option bar of the Fiery printing tab of your printer driver. For more information, see Chapter 1 of the *Color Guide*.

To set up Two-Way Communication for PostScript or PCL printer drivers for Windows 2000/XP/Server 2003

1. In the Installable Options (PS) or Device Options (PCL) tab, select Two-Way Communication.
2. Type the Sharp AR-C360P's IP address or DNS name.
3. In the PS driver, to display the Sharp AR-C360P's current default settings when opened, select Update Fiery Driver When Opened.
4. Click Update.
5. In the PS driver, to receive an e-mail notification after your job has been printed, select Enable E-mail Notification, and type in the e-mail address to which notification should be sent.

You will also receive e-mail notification of any errors that occur during printing.

Note: Enable E-mail Notification is displayed only if Email Service is enabled at Setup.

6. Click OK.

Completing the Windows 2000/XP/Server 2003 printer connection

To print from Windows 2000/XP/Server 2003, you must:

- Set up network servers, if any.
- Set up the Fiery to accept print jobs from your computer.
- Configure a port on each Windows 2000/XP/Server 2003 computer for the network type.

To do this	See
Configure the parallel connection	"Completing the Windows 2000/XP/Server 2003 parallel port connection" in this section.
Configure the TCP/IP (LPR port) connection	"Completing the Windows 2000/XP/Server 2003 TCP/IP and Port 9100 or LPR connection" on page 1-51.
Configure the IPX (Novell) connection	"Completing the Windows 2000/XP/Server 2003 IPX (Novell) connection" on page 1-52.

Note: The procedures for completing the printer connection for Windows 2000/XP and Windows Server 2003 are similar. Windows 2000 illustrations are used in the following procedure, with relevant Windows XP differences noted.

Completing the Windows 2000/XP/Server 2003 parallel port connection

The parallel port cable connects the Fiery to a single computer. Once you have installed the Windows 2000/XP/Server 2003 PostScript printer driver and the Fiery printer description files, complete the setup for parallel port printing.

To set up parallel printing for Windows 2000/XP/Server 2003

1. Windows 2000: Click Start, choose Settings, and then choose Printers.
Windows XP: Click Start, and choose Printers and Faxes.
Windows Server 2003: Click Start, choose Control Panel, and then choose Printers and Faxes.
2. Double-click the Fiery icon and choose Properties from the Printer menu.
In the Ports tab, confirm that LPT1 (Local Port) is selected.
The Fiery is ready to accept parallel print jobs from your computer, using the Windows 2000/XP/Server 2003 PostScript printer driver and the Fiery printer description file.
3. Click the General tab and click Print Test Page.
4. To share the printer on the network, click the Sharing tab.
Select whether to share the printer, and specify the operating systems used by network clients.
5. Click OK to exit the Printer Properties dialog box.

Completing the Windows 2000/XP/Server 2003 TCP/IP and Port 9100 or LPR connection

Note: If you installed the driver from the Drivers CD (CD1), this procedure is not necessary. TCP/IP connection will have been set up automatically during the installation.

Once you have installed the PostScript and printer driver files, complete the setup for the TCP/IP and LPR connection as follows:

- Prepare the Fiery to accept print jobs using TCP/IP and LPR protocols. For details, see Chapter 2 of the *Configuration Guide*.
- Install Sharp LPR software utility from the Drivers CD (CD1).
- Run Sharp LPR and add the printer by discovery on the network. (See the Help screens with the Sharp LPR utility.)

Before you continue, contact the system administrator for the IP address assigned to the Fiery, as well as the subnet mask and the gateway address, if they are used.

The TCP/IP protocol should already be installed on the Windows 2000/XP/Server 2003 workstation.

Note: You can also set up the LPR connection by installing Print Services for UNIX, which is supplied as an add-on Windows component with your Windows 2000/XP/Server 2003 CD. For more information, see your Windows documentation.

To set up TCP/IP and Port 9100 or LPR connection for Windows 2000/XP/Server 2003

1. Insert the Drivers CD (CD1) and wait for the CD Installer to autorun.
If the setup program does not start after a minute or so, navigate to the CD top level directory and run setup.exe.
2. Choose your preferred installer language and wait for main installer screen to appear. If necessary, click Accept when prompted to accept the licence conditions.

3. Follow the directions of the main installer screen to install Sharp LPR and then the Sharp Network Extension from the available software utilities.
4. When installation is complete, exit the CD Installer program.
5. Reboot the computer and then run Sharp LPR either from the Programs menu or from its icon in the system tray (bottom right, near the clock).
6. Choose Add Printer from the Remote Print menu (see Sharp LPR on-line help).
7. Choose your Sharp AR-C360P installed driver from the Printer Name drop-down list.
8. Enter the IP address of the Sharp AR-C360P if you have it, or click the Discover button to search the network and choose your printer.

If your printer is connected via DHCP the Sharp LPR utility will still find it if its IP address changes next time it is rebooted.

Completing the Windows 2000/XP/Server 2003 IPX (Novell) connection

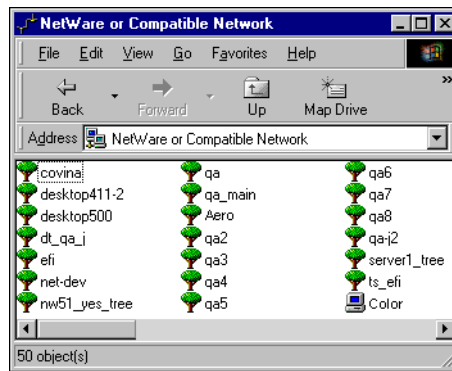
Complete the setup for the IPX (Novell) connection as follows:

- Configure the Novell network and file server for handling Fiery print jobs. The file server should be configured with a print server and print connection for the Fiery. For details, see your NetWare documentation.
- Prepare the Fiery for IPX printing.
- Set up the IPX connection on the computer.

NetWare protocols (NWLink IPX/SPX Compatible Transport) and NetWare client services should already be installed on the Windows 2000/XP/Server 2003 computer.

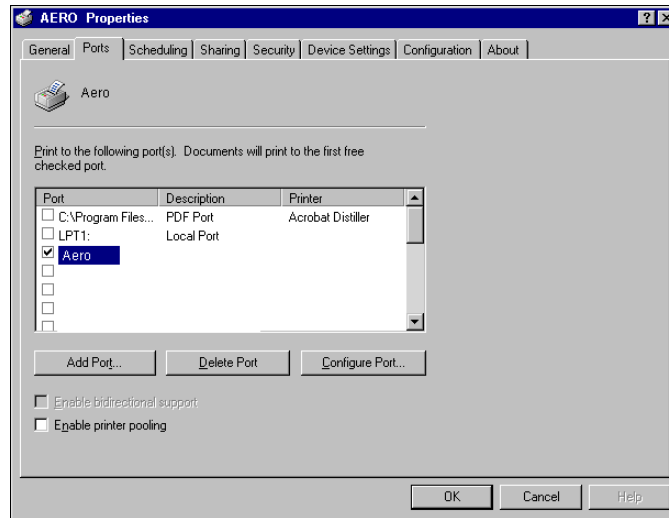
To set up IPX (Novell) printing for Windows 2000/XP/Server 2003

1. Windows 2000: Double-click My Network Places.
Windows XP: Click Start, and then click My Network Places.
Windows Server 2003: Click Start, choose Explorer, and then click My Network Places.
2. Double-click NetWare or Compatible Network.
A list of NetWare servers appears.



3. Double-click the NetWare Tree or File Server on which the network administrator defined a print connection for the Fiery.
You may have to log in to the file server to see the print connections.
4. Double-click the print connection defined for the Fiery.
5. If the NetWare server does not have a suitable driver for the Fiery, you may be asked if you want to set up the printer on your computer. Click Yes.
6. Click OK to install the Fiery PostScript printer driver.
7. Follow the procedure that starts with [step 6](#) on [page 1-17](#).
When installation is complete, a new printer window appears, with the name of the print queue on the NetWare server.
8. Choose Properties from the File menu and click the Ports tab.

Verify that the connection to the NetWare queue is listed and selected as a port for the Fiery.



9. Click the General tab and click Print Test Page.
10. In the printer Job Notes field, type user and job identification information and click OK.

The Test page remains listed in the queue window until it is printed.

The Fiery polls the NetWare server for print jobs in the print connection defined for the Fiery. When you print, your PostScript files are spooled to that connection and transmitted over the queue "port" to the Fiery.

Setting up SMB printing on Windows 2000/XP/Server 2003

SMB printing (also known as Windows printing) allows you to install the printer driver and associated files, and print from your computer to a particular print connection (Hold, Print, or Direct) on the Fiery. These instructions assume you have installed the TCP/IP protocol and Client for Microsoft Networks.

Each connection (Hold, Print, or Direct) requires a new printer driver and printer description file. To set up printing to a second or third print connection, repeat the procedure, "[To set up SMB printing on Windows 2000/XP/Server 2003](#)". If you install more than one printer, give each a descriptive name during printer driver installation, such as Aero-Print or Aero-Hold, so you can easily identify printers.

Before you begin

- Configure the Fiery for SMB printing in Network Setup>Service Setup>Windows Setup.

SMB printing is referred to as Windows Printing in Setup, on the Control Panel Map, and on the Configuration page. For more information, see Chapter 2 of the *Configuration Guide*.

To set up SMB printing on Windows 2000/XP/Server 2003

1. Open My Network Places.
2. Browse for the printer you want to print to.

The printer name you are browsing for is the name entered in Network Setup>Service Setup>Windows Setup>Server Name. For this information, see the Configuration page.

The amount of network traffic determines the amount of time required for the Browse function.

Note: You can also locate the printer using the Search feature on your Windows computer. Right-click My Network Places and click Search for Computers. Type the name of the printer and click Search Now.

If you are not able to locate your Fiery, contact your network administrator.

3. Double-click the name of the Fiery to display enabled print connections.
4. Double-click the print connection you want to print to.

1

1-56 Installing User Software on a Windows Computer

The printer files are downloaded from the Fiery and the print connection is set up.

For more information, see ["To install the PostScript or PCL printer driver for Windows 2000/XP/Server 2003"](#) on page 1-44.

Setting up IPP printing with Windows 2000/XP/Server 2003

With Internet Printing Protocol (IPP), print jobs are sent to the Fiery over the Internet.

IPP printing is supported directly for Windows 2000/XP/Server 2003 computers. IPP printing is not supported on Windows NT 4.0.

Note: The IPP setup procedures are performed after installing the appropriate printer drivers (see ["To install the PostScript or PCL printer driver for Windows 2000/XP/Server 2003"](#) on page 1-44).

Before you begin

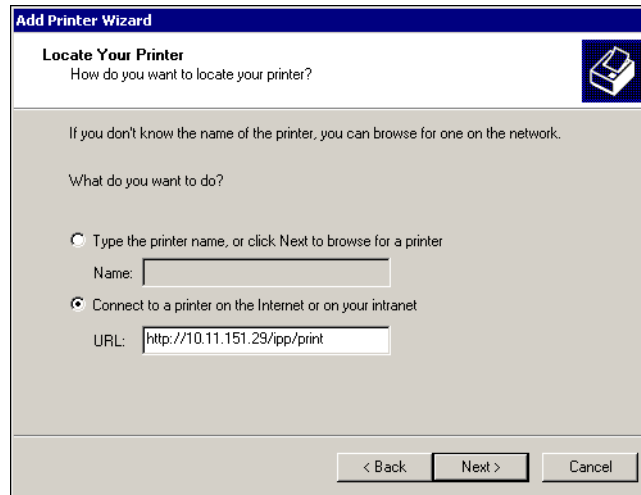
1. Prepare the Fiery for TCP/IP printing.
2. Make sure the Fiery is configured for IPP printing. For more information, see Chapter 4 of the *Configuration Guide*.
3. Specify the printing destination on your computer.

To set up IPP printing with Windows 2000/XP/Server 2003

1. Windows 2000: Click Start, choose Settings, and then choose Printers.
Windows XP: Click Start and choose Printers and Faxes.
Windows Server 2003: Click Start, choose Control Panel, and then choose Printers and Faxes.
2. Windows 2000: Double-click the Add Printer icon and click Next.
Windows XP: Click Add Printer.
Windows Server 2003: Choose Add a printer
3. Select Network printer and click Next.

4. Select "Connect to a printer on the Internet or on your intranet." Type an IP address or computer name in the URL field.

The URL for the printer is the IP address or DNS name followed by "ipp" and the connection you want to print to (print, hold, or direct). Insert slashes between the different elements.



5. Click Next.
The Connect to Printer dialog box appears.
6. Click OK.
The Add Printer Wizard dialog box appears.
7. If you are installing the PostScript printer for Windows 2000/XP/Server 2003 for the first time, follow the procedure described on [page 1-44](#).
If you have already installed the printer driver on your computer, choose the appropriate names from the Manufacturers and Printers lists and click OK.
8. Indicate whether you want to make the Fiery the default printer and click Next.
9. Click Finish.

Installing EFI Fiery Mail Port

The E-Mail Service provides a method to print and control the Sharp AR-C360P remotely. Jobs are sent to the Sharp AR-C360P in the form of e-mail attachments. You can set up e-mail printing on Windows computers by adding the EFI Fiery Mail Port software as a printer port.

To set up the Fiery for e-mail printing, see Chapter 4 of the *Configuration Guide*. After Setup has been performed, install the software from the Utilities CD (CD2) onto your Windows computer, and then add a port.

Note: Procedures are given for Windows 98/Me and Windows NT 4.0. Procedures for Windows 2000/XP/Server 2003 are similar to those for Windows NT 4.0.

To install the e-mail port monitor on Windows computers

1. Insert the Utilities CD (CD2) supplied with your Sharp AR-C360P into your CD drive.

Normally the Installer program should autorun. If it does not, navigate to the top level directory window of the CD and run setup.exe.

2. Select Fiery Utilities.
3. Click on Install Fiery Mail Port and follow the on-screen prompts to install the mail port to your computer.

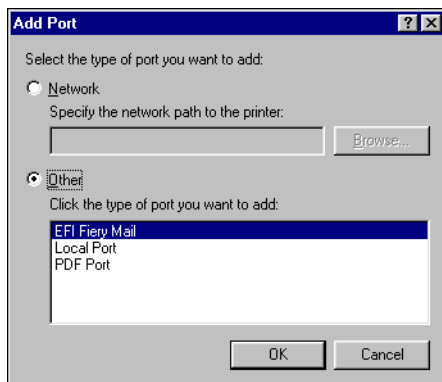
When installation is complete, you are ready to configure the connection for the e-mail port monitor.

To configure the connection for EFI Fiery Mail Port on Windows 98/Me

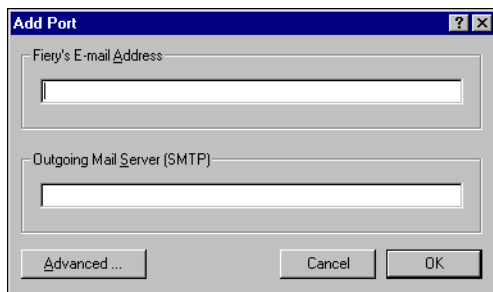
1. Click Start, choose Settings, and then choose Printers.
2. In the Printers window, right-click the icon for the Fiery printer driver.

For instructions on installing the printer driver, see ["Installing the PostScript or PCL printer driver for Windows 98/Me"](#) on page 1-17.

3. Choose Properties, and click the Details tab.
4. Click Add Port.

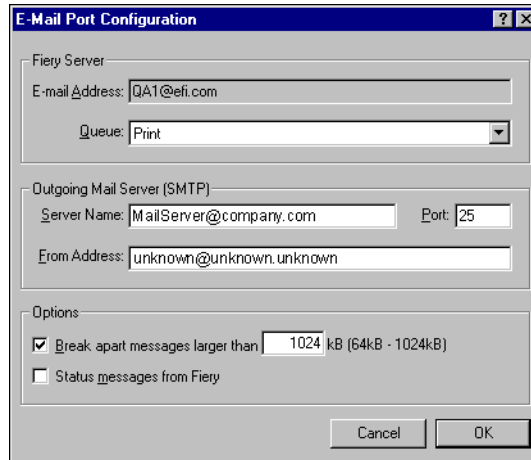


5. Click Other and select EFI Fiery Mail from the list of ports.
6. Click OK.



7. Enter the basic information required to set up the e-mail port.
Fiery's E-mail Address—Enter the e-mail address of the Sharp AR-C360P.
Outgoing Mail Server—Enter the name or IP address of the SMTP server for the port monitor to use.
8. Click Advanced.

The E-Mail Port Configuration dialog box appears.



9. Enter the following information.

For Fiery Server:

E-mail Address—The e-mail address of the Sharp AR-C360P.

Queue—The print connection on the Fiery that you want.

For Outgoing Mail Server (SMTP):

Server Name—The SMTP server to use.

From Address—The “from” address to insert in the e-mail.

For Options:

Break apart messages larger than—The maximum size of a single e-mail message is displayed. If a job exceeds this size, it is split into multiple messages, each not exceeding this size.

Status messages from Fiery—When enabled, the Status option requests the Fiery to send status reports of the job via e-mail.

10. Click OK.

The name assigned to the EFI Fiery Mail Port appears in the Details tab of the Fiery printer driver.

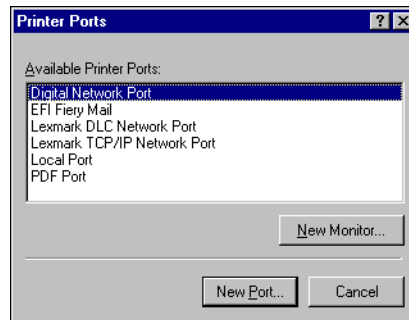
11. Click Apply, and then click OK.

The connection for the EFI Fiery Mail Port has now been configured.

To configure the connection for the EFI Fiery Mail port on Windows NT 4.0

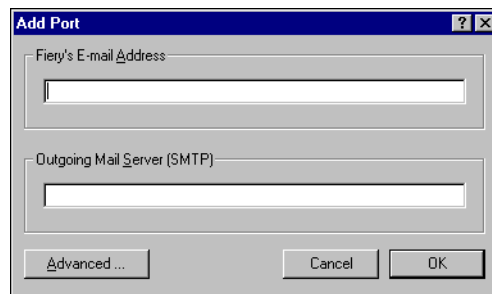
1. Click Start, choose Settings, and then choose Printers.
2. In the Printers window, double-click the Add Printer icon and click Next.
3. Specify printing using a Local printer and click Next.
4. In the window displaying a list of ports, click Add Port.

The Printer Ports dialog box is displayed, with the EFI Fiery Mail port listed as one of the available ports.



5. Select EFI Fiery Mail and click New Port.

The Add Port dialog box appears.



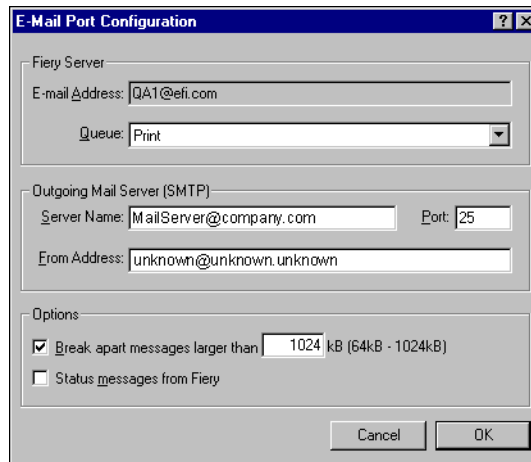
6. Enter the basic information required to set up the e-mail port.

Fiery's E-mail Address—Enter the e-mail address of the Sharp AR-C360P.

Outgoing Mail Server—Enter the name or IP address of the SMTP server for the port monitor to use.

7. Click Advanced.

The E-Mail Port Configuration dialog box appears.



The image shows the 'E-Mail Port Configuration' dialog box. It has a title bar with a question mark and a close button. The dialog is divided into three main sections: 'Fiery Server', 'Outgoing Mail Server (SMTP)', and 'Options'. In the 'Fiery Server' section, the 'E-mail Address' field contains 'QA1@efi.com' and the 'Queue' dropdown menu is set to 'Print'. In the 'Outgoing Mail Server (SMTP)' section, the 'Server Name' field contains 'MailServer@company.com', the 'Port' field contains '25', and the 'From Address' field contains 'unknown@unknown.unknown'. In the 'Options' section, the 'Break apart messages larger than' checkbox is checked, with a value of '1024' and the unit 'kB (64kB - 1024kB)' displayed. The 'Status messages from Fiery' checkbox is unchecked. At the bottom right, there are 'Cancel' and 'OK' buttons.

8. Enter the following information.

For Fiery Server:

E-mail Address—The e-mail address of the Fiery.

Queue—The print connection on the Fiery that you want.

For Outgoing Mail Server (SMTP):

Server Name—The SMTP server to use.

From Address—The "from" address to insert in the e-mail.

For Options:

Break apart messages larger than—The maximum size of a single e-mail message is displayed. If a job exceeds this size, it is split into multiple messages, each not exceeding this size.

Status messages from Fiery—When enabled, the Status option requests the Fiery to send status reports of the job via e-mail.

1

1-64 Installing User Software on a Windows Computer

9. Click OK.

The Add Printer Wizard dialog box appears.

10. Click Next and follow the instructions for installing the printer driver for your Windows computer.

Installing Fiery utilities

From the CD2, you can install the following Fiery utilities and user software:

- ColorWise Pro Tools
- Fiery Downloader
- EFI Fiery Mail Port (see ["Installing EFI Fiery Mail Port"](#) on page 1-59)
- Command WorkStation
- Fiery Remote Scan

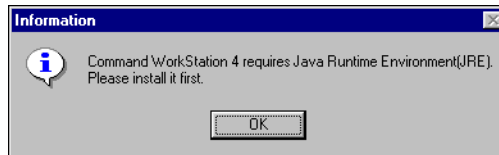
The Fiery utilities must be separately installed on each user's computer. The installation of each utility is similar. Before you begin each installation, determine where you want to install each item on your hard disk. Otherwise, the software is placed by default in the Fiery folder inside the Programs folder. The Command WorkStation installer also installs the Java files necessary to use Fiery Setup from Command WorkStation.

Note: To install software, you must have Service Pack 4 installed on a Windows 2000 computer and Service Pack 1 installed on Windows XP. If not, a warning message alerts you to install the correct service pack.

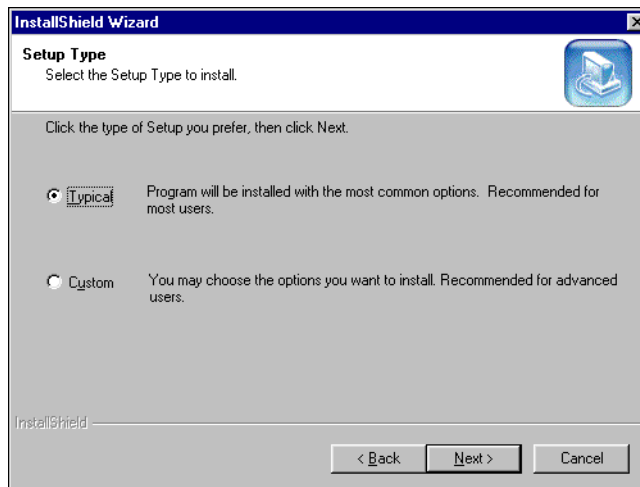
To use Fiery software (Command WorkStation and ColorWise Pro Tools) as well as WebTools on a Windows computer, you must install the Sun Java file, Java Runtime Environment (JRE), provided in the CommonUtl folder on the User Software CD. If the Sun Java file is not installed, you are prompted to install it before you proceed to install Fiery software. For more information on installing Java Runtime Environment (JRE), see ["To install Sun Java on your computer"](#) on page 1-66. For more information on WebTools, see the *Job Management Guide* and the *Printing Guide*.

To install Sun Java on your computer

1. When the dialog box prompting you to install Java Runtime Environment (JRE) appears, click OK to proceed with installation.



2. Click Yes in the License Agreement dialog box.
3. Select Typical for Setup Type and click Next.



4. When installation of Java Runtime Environment (JRE) files is complete, click Finish and follow the instructions for installing Fiery software in ["To install Fiery utilities"](#) on page 1-67.

After installation of the Sun Java files, a Java Web Start shortcut is created on your computer desktop. This is not intended for use with Fiery software, so you may delete the shortcut if you wish.

To install Fiery utilities

1. Insert the Utilities CD (CD2) supplied with your Sharp AR-C360P into your CD drive.

Normally the Installer program should autorun. If it does not, navigate to the top level directory window of the CD and run setup.exe.

2. Select Fiery Utilities.
3. Click on the name of the utility you wish to install.
Click on the "Tell me more" links to see a description of each utility.
4. Follow the instructions in the Setup dialog boxes to complete installation.

Using Fiery utilities for the first time

Before you can use the newly installed software, you must configure the connection to the Fiery.

Configuring the connection for Fiery utilities

The first time you start one of the Fiery utilities, you must configure the connection to the Fiery. Similar configuration is used for all Fiery utilities, so a change in one configuration affects all the other connections. Configuration for most Fiery utilities is described in the following procedure.

For configuration of specific Fiery utilities, see [“Configuring the connection for Command WorkStation”](#) on page 1-70.

Before you begin

- Print the Configuration page from the Sharp AR-C360P Control Panel. This page contains information you need when configuring the connection, such as the IP address. For TCP/IP installations, you can use the DNS name of the Fiery instead of the IP address. Make sure the Fiery is already registered in a Domain Name Server (DNS) on your network. For more information, see your Windows system documentation.

To configure the connection for Fiery utilities

1. Start the utility for which you want to configure a connection.
For details, see the *Printing Guide*.
2. If the No Servers Configured dialog box appears, click OK.
If the Choose Printer Device dialog box appears, click Add.
3. Enter the appropriate information for the Fiery.
Nickname—Enter a name for the Fiery. This name does not have to match the actual Server Name of the Fiery.

Note: The nickname cannot contain any of the following seven characters:

[] _ " ' <space> <tab>

Protocol—Choose the type of network protocol you are using from the menu.

Note: Fiery utilities are not supported over IPX/SPX. Command WorkStation is supported on Windows computers over TCP/IP.

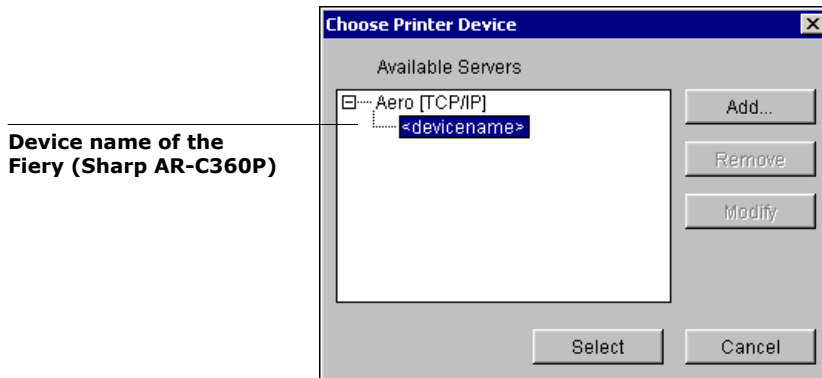
Server Name—Enter the IP address (or DNS name) of the Sharp AR-C360P.

New Device—Enter the name of the device the Fiery is installed in: Sharp AR-C360P.

Note: Type Sharp AR-C360P exactly as shown because the device name is case-sensitive.

4. When you have entered all the information, click Add.
5. With the device name (Sharp AR-C360P) selected in the Devices list, click OK.

The Fiery appears in the list of available servers. The first line of the entry displays the nickname you gave the server, followed by the protocol you chose. The second line displays the device name.



6. With the device name selected in the list of Available Servers, click Select to begin using the utility.

Modifying the configuration

Edit the configuration whenever there is any change to your Fiery server or network, such as a server name or IP address. If you change Fiery Setup information, do so before reconfiguring the connection.

To modify the configuration

1. To edit information for a Fiery in the list of available servers, select the Fiery by its nickname and click Modify.
2. Make the necessary changes in the Modify Server Settings dialog box and click OK.
3. To add a new Fiery to the list of available servers, click Add. Configure the Add New Server dialog box as outlined in steps 3 through 5 in the previous procedure.
4. To remove a Fiery, select the Fiery by its nickname and click Remove.

Note: The nickname cannot be modified.

Configuring the connection for Command WorkStation

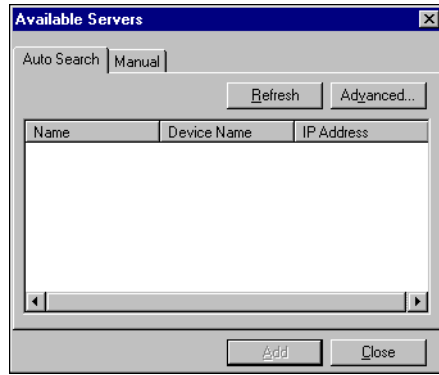
The first time you start Command WorkStation, you are prompted to configure the connection to the Fiery.

To configure the connection for Command WorkStation

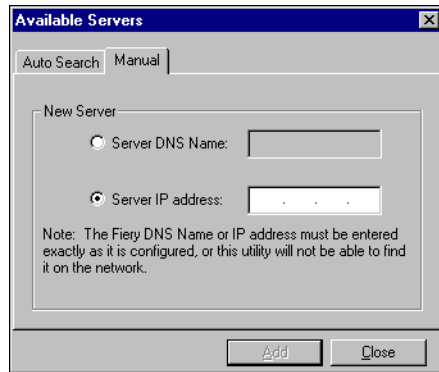
1. Print a Configuration page.
The information on this page helps you locate the Fiery, if it is not on the same local subnet as your computer.
2. Start Command WorkStation.
The Available Servers dialog box appears. All servers found in the local subnet are displayed.

1

1-71 Using Fiery utilities for the first time



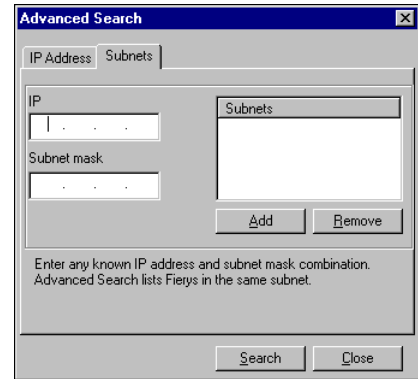
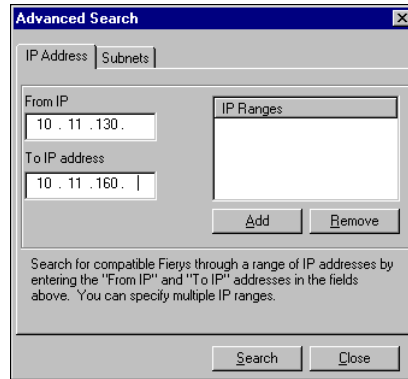
3. If no Fiery servers were found, click the Manual tab to search by DNS name or IP address. Click Add to add the server to the Available Servers list.



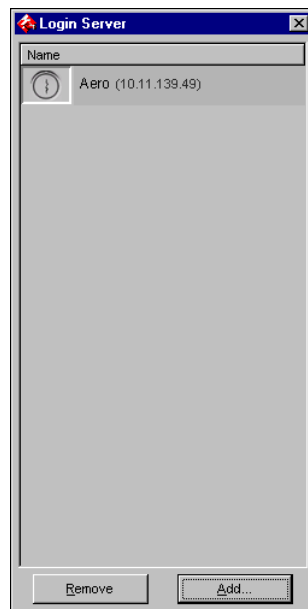
4. Click the Auto Search tab and then click Advanced to search by either a range of IP addresses or the IP address and subnet mask.

1

1-72 Installing User Software on a Windows Computer



5. Click Search.
All available servers appear in the Available Servers list.
6. Select the Fiery server you want to use and click Add.
The selected Fiery server appears in the Login Server dialog box.



7. Click the server name.

The Log In dialog box appears.



8. Select Administrator, Operator, or Guest and click Log In.
Your computer is connected to the server.

Modifying the configuration

Edit the configuration whenever there is any change to your Fiery server or network, such as a server name or IP address. If you change Fiery Setup information, do so before reconfiguring the connection.

To modify the configuration

1. Start Command WorkStation.
The Login Server window appears.
2. Select the Fiery server for which you want to modify the configuration, and click Remove.
The Available Servers dialog box appears.
3. To add the modified Fiery server, follows steps 3 through 6 of the procedure,
["To configure the connection for Command WorkStation"](#) on page 1-70.

1

1-74 Installing User Software on a Windows Computer

To modify the connection to the Fiery, you must remove the server from the Login Server list and follow the procedure for configuring the connection.

Installing Color files from the User Software CD

You can copy additional Color files from the User Software CD to your hard disk. Many of the files are PostScript files that you can download and print using Fiery Downloader.

ICC folder ICC monitor settings file and a device profile specially designed for use with the Fiery and particular printer models. For instructions on installing, see ["Installing the ICC profiles on a Windows computer"](#) on page 1-76.

Clrfiles folder (inside the English folder) Cmyk.ps, an 11-page, letter-size PostScript file to use for reference when defining CMYK Colors in applications.

Pantone.ps, a 19-page, letter-size PostScript file that indicates the closest equivalent of PANTONE coated Colors that the Fiery and your Sharp AR-C360P can produce. The method used to print the Pantone.ps file differs depending on the Spot Color Matching setting. For more information, see the *Printing Guide* and the *Color Guide*.

Rgb_01.doc, a file you can print from Microsoft Word 97 or later to view available RGB Colors.

Rgb_02.ppt, a file you can print from PowerPoint 6.0 or later to view available RGB Colors.

Calibrat folder (inside the English\Clrfiles folder) Four PostScript files of Color patches for obtaining measurements: Custom21.ps, Custom34.ps, Stand21.ps, and Stand34.ps. The numbers in the file names refer to the number of patches on the page. The Custom files allow you to download measurement patches that incorporate the printer's current calibration set. The Standard files allow you to download standard measurement patches that bypass the printer's current calibration set. For information on using these files, see the *Color Guide*.

Note: These files are provided for expert users and should not be used for day-to-day calibration.

Installing the ICC profiles on a Windows computer

The ICC profiles included in the Icm folder on CD2 are for use with ColorWise Pro Tools. You can also use the ICC profiles with applications that support ICC standards, such as Photoshop. For most ICC-aware applications, the files must be installed in a folder named Color in the System folder. For use with ColorWise Pro Tools, you can copy the files to a folder of your choice.

You can upload additional ICC profiles with the Profile Manager in ColorWise ProTools. For more information on uploading and using ICC profiles with ColorWise Pro Tools, see Chapter 1 of the *Color Guide*.

To install the ICC profiles on a Windows computer

1. On CD2, open the ICC folder.

To access this folder click Start>Run, and enter D:\ICC (where D: is the drive letter of your CD drive). If the Installer autoruns when you load the CD, click Exit to close it.

2. If you are using Windows 98/Me, copy the profiles to the Windows\System\Color folder on your hard disk.

If you are using Windows NT or Windows 2000, copy the profiles to the Winnt\System32\Color folder on your hard disk.

Note: If a folder named "Color" does not exist in the System32 folder, create one and install the profiles into it.

If you are using Windows XP/Server 2003, right-click the profile you want and click Install Profile.

Note: The profiles are installed automatically to the Windows\System32\spool\drivers\color folder on your hard disk.

Loading the monitor settings file

The Efirgb.icm monitor settings file can be used in Photoshop, or other applications that support ICC profiles, to define a source

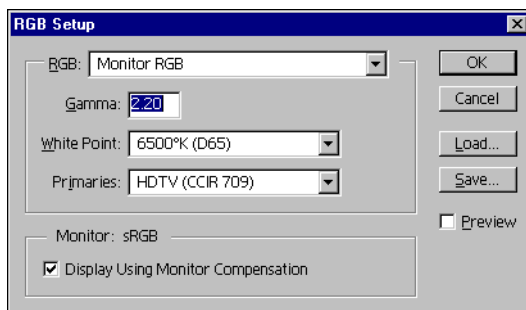
Color space for printing to the Sharp AR-C360P.

These instructions assume you have installed the ICC profiles included on CD2. For more information, see the preceding section.

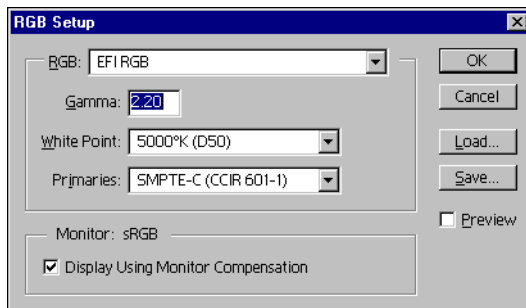
Note: The internal name of an ICC profile may vary slightly from its file name.

To load the RGB Working Space profile for Photoshop 5.x

1. Start Photoshop.
2. Choose Color Settings from the File menu and choose RGB Setup from the Color Settings submenu.
3. In the RGB Setup dialog box, click Load.



4. For Windows 98/Me, browse to the Windows\System\Color folder, select Efirgb.icc, and then click Load.



For Windows NT 4.0 or Windows 2000, browse to the Winnt\System32\Color folder, select Efirgb.icc, and then click Load.

For Windows XP/Server 2003, browse to the Windows\System32\spool\driver\color folder, select Efirgb.icc, and then click Load.

The Efirgb v1f file is displayed in the RGB menu of the RGB Setup dialog box.

5. Click OK.

For more information about ICC profiles, see your Photoshop documentation.

Loading the ICC printer device profile

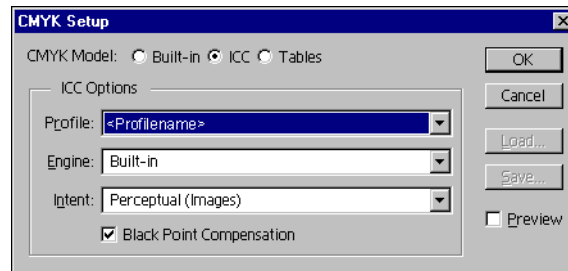
This ICC profile defines the target Color space for printing to the printer.

These instructions assume you have installed the ICC profiles included on CD2. For more information, see ["Installing the ICC profiles on a Windows computer"](#) on page 1-76.

Note: The internal name of an ICC profile may vary slightly from its file name.

To load the ICC printer device profile in Photoshop 5.x

1. Start Photoshop.
2. Choose Color Settings from the File menu and choose CMYK Setup from the Color Settings submenu.
3. In the CMYK Setup dialog box, choose ICC as the CMYK color model.
4. Select the profile that corresponds to the Fiery from the Profile menu.



5. Click OK.

For more information about ICC profiles, see your Photoshop documentation.

Loading monitor settings files and ICC device profiles in Photoshop 6.x

Once you have installed the Efirgb.icc monitor settings file and the ICC device profile for the Fiery, they can be loaded at the same time in Photoshop 6.x.

To load the monitor settings file and ICM device profile in Photoshop 6.x

1. Start Photoshop.
2. Choose Color Settings from the Edit menu and select Advanced Mode in the Color Settings dialog box.
3. Choose EFI RGB from the RGB menu.
4. Choose the profile that corresponds to the Fiery from the CMYK menu.

Installing the printer description files for Windows

The User Software CD contains printer description files for popular Windows applications. Adobe Pagemaker 5.0, 6.x, and 7.0 do not support automatic installation of printer description files from the Printers or Printers and Faxes Control Panel. To make the Fiery available in the Print and Page Setup dialog boxes of this application, copy printer description files to the appropriate location.

To copy the printer description files

1. On the User Software CD, open the English\Prntdrv\Ps_drvr folder. Select the folder that corresponds to the system you are using.
For Windows 98/Me, select \Drivers\<language>\Win9x\ps.
For Windows NT 4.0, select \Drivers\<language>\nt4\ps.
For Windows 2000/XP/Server 2003, select \Drivers\<language>\Win2k_xp\ps.
2. Copy the printer description file "EF8X3324.PPD" to the appropriate location.

If you use	To this location
PageMaker 5.0	\ALDUS\USENGLISH\PPD4
PageMaker 6.0	\PM6\RSRC\USENGLISH\PPD4
For PageMaker 6.5	\PM65\RSRC\USENGLISH\PPD4
For PageMaker 7.0	\PM7\RSRC\USENGLISH\PPD4

Chapter 2: Installing User Software on a Mac OS Computer

The general steps for installing the Fiery user software and setting up printing on a Mac OS computer are as follows:

- Install the PostScript printer driver and printer description file.
- Set up the Sharp AR-C360P in the Chooser (Mac OS 9 or Mac OS X Classic mode) or in the Print Center (Mac OS X Native mode).

Note: The “Print Center” is called “Printer Setup Utility” in OS X 10.3 and above.

- Install the Fiery utilities (Fiery Remote Scan, ColorWise Pro Tools, Fiery Downloader, Command WorkStation LE, and Fiery Spooler).
- Configure the connection for Fiery utilities.
- Install the printer and screen fonts.
- Install the ColorSync profiles.
- Install additional color reference and application-specific files.

Setting up the Sharp AR-C360P as a PostScript printer

To set up the Sharp AR-C360P as a PostScript printer, you must install the PostScript printer driver and the printer description file that corresponds to your printer. The PostScript printer driver and printer description files are provided on the Driver CD (CD1). Printer drivers provide a way to communicate information on print jobs between your applications, the Sharp AR-C360P, and any other PostScript printer connected to your computer.

Setting up Mac printer drivers and printer description files

Detailed instructions for Mac OS 9 are provided on CD1 in the Mac OS 9: <language> folder.

Detailed instructions for Mac OS X are provided on CD1 in the Mac OS X folder.

Installing Fiery software and fonts

The Mac OS installers function essentially the same for each type of software. Before you begin each installation, determine where you want to install each item on your hard disk. Otherwise, the software is placed by default as follows:

- ColorSync profiles—ColorSync Profiles folder
For ColorSync 2.5, copy the profiles from the Extras:ColorSync Profiles folder on CD2 into the ColorSync Profiles folder inside your System folder.
- Fiery Spooler, Fiery Downloader, Command WorkStation LE, and ColorWise Pro Tools—"Fiery" folder
- Fonts—System folder:Fonts folder
Mac fonts corresponding to those resident on the Sharp AR-C360P are provided on CD1 in the Extras:Fonts:OS 9 and Extras:Fonts:OS X folders. These can be installed on your Mac for use in applications.

To install Mac OS software

1. Insert the Utilities CD (CD2) in the CD drive and double-click the Installer icon of the item you want to install, and then follow the instructions in the installer dialog boxes.
2. If prompted, click Quit to close the software installer.

In order to use ColorWise Pro Tools, Fiery Link, or Fiery Spooler, you must have Mac OS Runtime for Java (MRJ) installed on your computer.

If you do not have the appropriate MRJ installed, the installer automatically initiates the MRJ installation process.

The respective installer prompts the MRJ installation from the CD. MRJ 2.2.5 is provided on the Utilities CD (CD2). We recommend that you use the version of MRJ provided on the Utilities CD with the Fiery software.

If you have a newer version of MRJ (such as 2.2.6) already installed on your computer and experience some difficulty using the Fiery software, either remove or relocate the MRJ files currently installed and reinstall the version of MRJ provided on CD2. Use the following procedure to uninstall MRJ.

To uninstall Mac OS Runtime for Java

1. Locate the System Folder on your hard disk.
2. Inside the Extensions folder, locate MRJ Libraries and remove it or move it to another folder.

Note: If you find the “MRJ Enabler” file under Extensions, remove it or move it to another folder.

3. Inside the Apple Extras folder, locate Mac OS Runtime for Java, and remove it or move it to another folder.
4. Restart your computer.

Configuring a connection for ColorWise Pro Tools

The first time you use ColorWise Pro Tools, you are prompted to configure a connection to the Sharp AR-C360P.

Note: ColorWise Pro Tools are supported only over TCP/IP networks.

Before you begin

- **Print the Configuration page from the Printer Control Panel and note the IP address of the Sharp AR-C360P.**

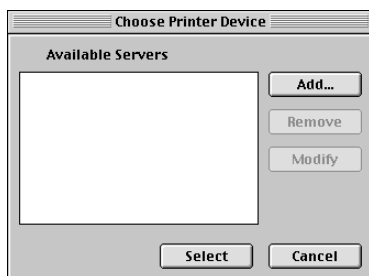
Press the MENU keys until the Print Pages menu is displayed, then press ENTER to select this menu.

Press the MENU keys until CONFIGURATION is displayed, then press ENTER to print these pages.

The printer's IP address is shown under Network Setup on the first configuration page.

To configure a connection for ColorWise Pro Tools

1. Start the utility by double-clicking its icon.
The Choose Printer Device dialog box appears.



2. If you have previously configured a connection to the Sharp AR-C360P, you are ready to use ColorWise Pro Tools. If you have not configured a connection, click Add.

3. Enter the appropriate information for the Sharp AR-C360P.

Nickname—Enter a name for the Sharp AR-C360P. It does not have to match the actual server name of the Sharp AR-C360P.

Note: The nickname cannot contain any of the following seven characters:

[] _ " ' <space> <tab>

Protocol—TCP/IP is the only supported network protocol, so no selection is necessary.

Server Name—Enter the IP address (or DNS or hosts name) of the Fiery.

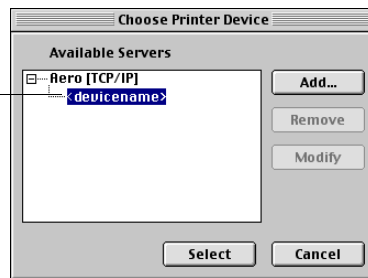
New Device—Enter the name of the device the Fiery is installed in: Sharp AR-C360P. This device name appears in the Printer Setup section of the Configuration page.

Note: Type Sharp AR-C360P exactly as shown because the device name is case-sensitive.

4. When you have added all the information, click Add.

5. With the device name selected in the Devices list, click OK.
The Sharp AR-C360P appears in the list of available servers. The first line of the entry displays the nickname you gave the server, followed by the protocol. The second line displays the device name.
6. With the device name selected in the list of Available Servers, click Select to begin using ColorWise Pro Tools.

Device name of the
Fiery
(Sharp AR-C360P)



Modifying the configuration

Edit the configuration whenever there is any change in your original configuration, such as a change of IP address. Change the specific Fiery Setup information before using the following procedure to configure the connection.

To modify the configuration

1. To edit information for a Sharp AR-C360P in the list of available servers, select the Sharp AR-C360P by its nickname and click Modify. Edit information in the Modify Server Settings dialog box as necessary, and click OK.
2. To add a new Sharp AR-C360P to the list of available servers, click Add. Configure the Add New Server dialog box as outlined in steps 3 through 5 in the preceding procedure.
3. To remove a Sharp AR-C360P from the list of available servers, select the Fiery by its nickname and click Remove.

Configuring a connection for Fiery Spooler

Before you begin, print a Configuration page from the Printer Control Panel and note the IP address of the Sharp AR-C360P. See [page 2-84](#).

To configure the connection for Fiery Spooler

1. Start the utility by double-clicking its icon.

The Chooser dialog box appears.

2. Click Option.

3. Click Add.

4. Enter the appropriate information for the Sharp AR-C360P.

Name—Enter the IP address (or DNS name) of the Sharp AR-C360P.

New Device—Enter the name of the device that the Fiery is installed in: Sharp AR-C360P. This device name appears in the Printer Setup section of the Configuration page.

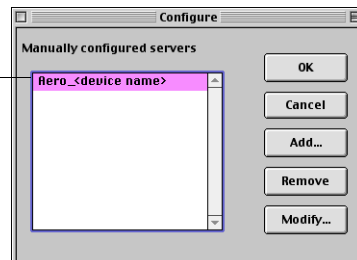
Note: Type Sharp AR-C360P exactly as shown because the device name is case-sensitive.

5. When you have entered all the information, click Add.

6. With the device name selected, click OK.

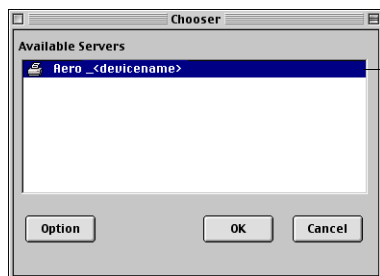
The Sharp AR-C360P appears in a list of configured servers.

Fiery name and device name (Sharp AR-C360P)



7. Click OK in the Configure dialog box.

The Sharp AR-C360P appears in a list of available servers.



**Fiery name and device
name
(Sharp AR-C360P)**

8. With the Sharp AR-C360P selected in the list of available servers, click OK to begin using Fiery Spooler.

Modifying the configuration

Edit the configuration whenever there is any change to your Sharp AR-C360P or network, such as an IP address or device change. Change the specific Fiery Setup information before configuring the connection.

To modify the configuration

1. In the Chooser dialog box, click Option.
2. To edit information for a Sharp AR-C360P, select the Sharp AR-C360P by its IP address or DNS name and click Modify. Edit information in the Settings dialog box as necessary, and click OK.
3. To add a new Sharp AR-C360P, click Add. Configure the Settings dialog box as outlined in steps 4 through 6 in the preceding procedure.
4. To remove a Sharp AR-C360P, select the Fiery by its IP address or DNS name, and click Remove.

The list of available servers reflects the modifications you have made.

Configuring a connection for Fiery Downloader

When you start Fiery Downloader, you must specify the connection to the Sharp AR-C360P.

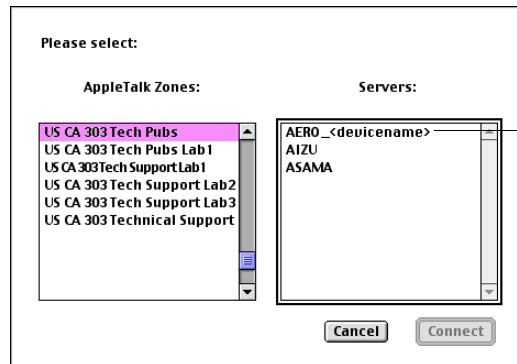
Before you begin

- **Print the Configuration page from the Printer Control Panel and note the AppleTalk zone of the Sharp AR-C360P. See [page 2-84](#).**

To specify a Sharp AR-C360P connection

1. Double-click the Fiery Downloader icon.
2. Select the AppleTalk zone in which the Sharp AR-C360P is located from the AppleTalk Zones list.

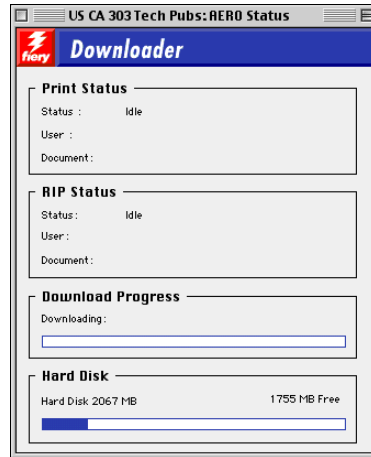
The available servers appear in the Servers list.



Fiery name and device name (Sharp AR-C360P)

3. Select the Sharp AR-C360P in the Servers list.
4. Click Connect.

The Fiery Downloader dialog box appears.



For information on how to use Fiery Downloader, see the *Printing Guide*.

Configuring the connection for Command WorkStation LE for Mac OS X

The first time you start Command WorkStation LE, you are prompted to configure the connection to the Sharp AR-C360P.

Before you begin

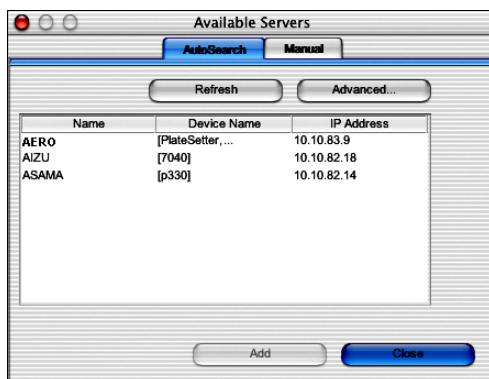
- **Print the Configuration page from the Printer Control Panel and note the IP address of the Sharp AR-C360P. See [page 2-84](#).**

To configure the connection for Command WorkStation LE

1. Start Command WorkStation LE.

The Available Servers dialog box is displayed. All servers found in the local subnet are displayed.

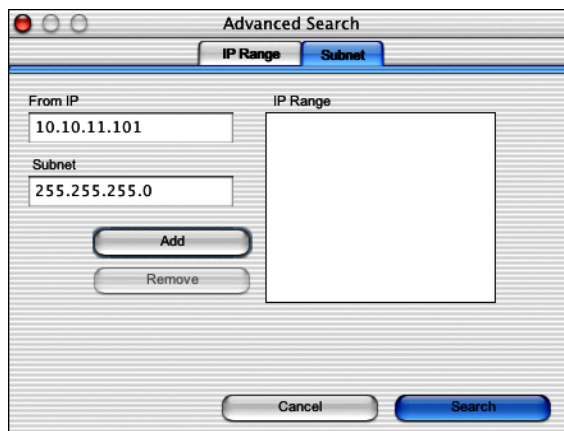
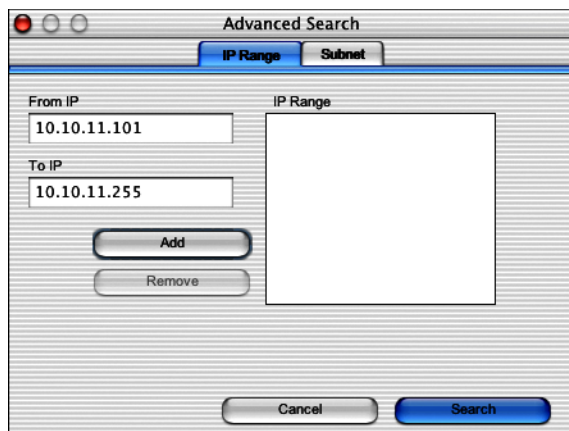
Note: The device name for the Fiery is Sharp AR-C360P.



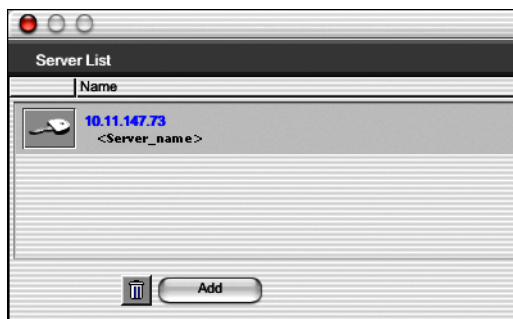
2. If no Fiery servers were found, click the Manual tab to search by DNS name or IP address. Click Add to add the server to the Available Servers list.



3. If no Fiery servers were found, click the Auto Search tab and then click Advanced to search by either a range of IP addresses or the IP address and subnet mask.



4. Click Search.
5. Select the Fiery server you want to use and click Add.
The selected Fiery server is displayed in the Login Server dialog box.



6. Click the server name.
The Log In dialog box appears.



7. Select Administrator, Operator, or Guest and click Login.
8. If prompted, enter the password for Administrator or Operator.
Your computer is connected to the server.

To modify the Command WorkStation LE connection to the Fiery, you must remove the server from the Login Server list and follow the procedure for configuring the connection.

Installing color files from CD2

You can copy additional color files from the CD2 to your hard disk.

Many of the files are PostScript files you can download and print using Fiery Downloader.

The Utilities CD (CD2) contains the following color files in the Extras folder:

ICC profiles (inside the ColorSync folder)	Install the ICC profiles into the ColorSync Profiles folder inside the System folder.
Mac Color Files folder (in the <language> folder)	<p>CMYK Color Reference.ps, an 11-page, letter-size PostScript file to use for reference when defining CMYK colors in applications.</p> <p>PANTONE Book.ps, a 19-page, letter-size PostScript file that indicates the closest equivalent of PANTONE coated colors that your Sharp AR-C360P can produce. The method used to print the PANTONE Book.ps file differs depending on the Spot Color Matching setting. For more information, see the <i>Printing Guide</i> and the <i>Color Guide</i>.</p> <p>RGB page 01, a file you can print from Microsoft Word 97 or later to view available RGB colors.</p> <p>RGB page 02, a file you can print from PowerPoint 6.0 or later to view available RGB colors.</p>
Calibration folder (inside the <language>: Calibration folder)	<p>Four measurements files of color patches: custom21.ps, custom34.ps, standard21.ps, and standard34.ps. The numbers in the file names refer to the number of patches on the page. The Custom files are provided to allow you to download measurement patches that incorporate the printer's current calibration set. The Standard files are provided to allow you to download standard measurement patches that bypass the printer's current calibration set. For information on using these files, see the <i>Color Guide</i>.</p> <p>These files are provided for expert users and should not be used for day-to-day calibration.</p>

Loading ICC profiles

The ICC profiles installed are used with ColorWise Pro Tools and applications that support ICC standards.

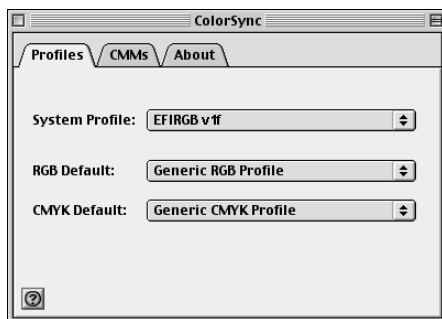
These instructions assume that you have already installed the ICC profiles included on CD2 inside the ColorSync folder. For more information, see ["Installing color files from CD2"](#) on page 2-93.

Note: The internal name of an ICC profile may vary slightly from its file name.

The following procedure describes installing the ICC profiles with ColorSync 4.0. For more information about ColorSync, see your application's documentation.

To set the ColorSync system profile

1. Choose Control Panels:ColorSync from the Apple Menu.
2. Select EFIRGB ICC from the System Profile list.



When selected as the ColorSync system profile, EFIRGB ICC sets the optimal source color space for printing to the Fiery. The color space set by the EFIRGB ICC profile is the same as that set by the EFIRGB setting of the RGB Source Profile print option.

Note: The RGB Source Profile print option setting overrides the ColorSync system profile setting.

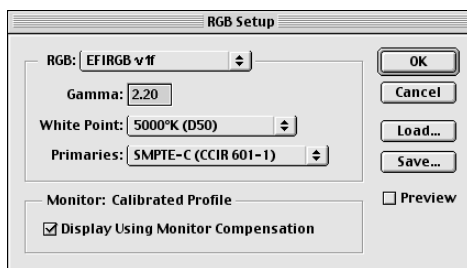
3. Close the ColorSync dialog box.
For more information about ICC profiles, see your Photoshop documentation.

Loading the monitor settings file

The EFIRGB ICC monitor settings file can be used in Photoshop or other applications that support ICC profiles to define a source color space for printing to the Fiery.

To load the monitor settings file in Photoshop 5.x

1. Start Photoshop.
2. Choose Color Settings from the File menu, and choose RGB Setup from the Color Settings submenu.
3. In the RGB Setup dialog box, click Load.
4. Browse to the System: Preferences: ColorSync Profiles folder, select the EFIRGB ICC file, and then click Open.



Note: If you are using ColorSync 2.5, the ColorSync profile is located in System Folder: ColorSync Profiles.

The EFIRGB file appears as the selection.

5. Click OK.

Loading the ICC printer profile

The ICC printer profile enables RGB-to-CMYK conversions that are specific to the kind of printer you are using.

To load the ICC printer profile in Photoshop 5.x

1. Start Photoshop.
2. Choose Color Settings from the File menu and choose CMYK Setup from the Color Settings submenu.
3. In the CMYK Setup dialog box, choose ICC as the CMYK color model.
4. Select the profile that corresponds to the Fiery from the Profile menu.
5. Click OK.

For more information about ICC profiles, see your Photoshop documentation.

Loading monitor settings and the ICC device profile in Photoshop 6.x/7.x

In Photoshop 6.x and 7.x, you can load the monitor settings file and the ICC device profile at the same time.

To load the monitor settings file and the ICC device profile in Photoshop 6.x/7.x

1. Start Photoshop.
2. Choose Color Settings from the Edit menu and then choose Advanced Mode.
3. Choose EFI RGB from the RGB menu.
4. Choose the profile that corresponds to the Fiery from the CMYK menu.
5. Click OK.

For more information, see your Photoshop documentation.

Chapter 3: Setting Up Fiery WebTools

Fiery WebTools allow you to manage your Fiery remotely from the Internet or from your company's intranet. The Sharp AR-C360P has its own home page, from which you can select a variety of functions.

For more information on using Fiery WebTools, see the *Printing Guide*.

Setting up Fiery WebTools

In order for network users to access and use Fiery WebTools, you must set specific Fiery options in Network Setup and Printer Setup. You also must prepare each user's computer to communicate with the Fiery over the Internet or intranet.

For more information about Network Setup and Printer Setup, see Chapter 4 of the *Configuration Guide*.

To set up client workstations to use Fiery WebTools

1. **Enable TCP/IP networking.**
2. **Make sure the workstation has a valid, unique IP address.**
3. **Make sure a supported Internet browser is installed on the computer.**

For more information on supported browsers, see "[System requirements](#)" on page -12.

4. **Make sure Java is enabled in your Internet browser.**

For more information on setting up the Fiery and the network, see the *Configuration Guide*.

Chapter 4: Troubleshooting

This chapter provides troubleshooting tips.

On a Windows computer

Setting up printing on Windows NT 4.0 or Windows 2000/XP/Server 2003 computers

If you have problems installing the Sharp AR-C360P with Windows NT 4.0 or Windows 2000/XP/Server 2003, try installing another PostScript printer (such as the Apple LaserWriter IIg), and then install the Sharp AR-C360P. Installing another printer ensures that all files are properly installed and available. For instructions, see your Windows documentation.

For information about problems you may encounter using the PostScript Printer Driver for Windows NT 4.0, see the Fiery Driver help file (EF8x3324.chm) included in \Drivers\English\nt40\ps on the Drivers CD (CD1). For Windows 2000/XP/Server 2003, see your Windows 2000/XP/Server 2003 documentation.

Reinstalling the Adobe PostScript Printer Driver on Windows 98/Me

If you are reinstalling the Adobe PostScript Printer Driver, delete any previous versions and related files before installation.

For additional information about problems you may encounter using the Adobe Printer Driver for Windows 98/Me, see the Fiery Driver help file (EF8x3324.chm) included in \Drivers\English\w9x\ps on the Drivers CD (CD1).

Problems with the Fiery utilities on Windows computers

If you are experiencing problems with connections for the Fiery utilities, try the following:

1. Make sure the TCP/IP networking protocol is enabled.
2. Make sure the connection is configured correctly for your site.
To check the current configuration, start a Fiery utility and choose Open from the File menu. Select the Sharp AR-C360P and click Modify to see current settings. If the settings are incorrect, you can change them in this dialog box.

On a Mac OS computer

Setting up the Fiery in the Mac OS 9 Chooser

If Auto-setup does not work and you are prompted to select the printer description file, select the appropriate Fiery file in your System:Extensions:Printer Descriptions folder.

Installing screen fonts

If you experience problems installing the PostScript screen fonts from CD1 to the System folder:Fonts folder, try the following:

1. Quit all applications and close all windows.
2. Create a new folder and name it "Uninstalled Fonts."
This folder must be located outside the System folder.
3. Move fonts you are not using from the System folder:Fonts folder to the Uninstalled Fonts folder.
4. Install the fonts from CD1 to a folder called CD fonts. Copy the fonts to the System folder:Fonts folder.
5. Create aliases to the System folder:Fonts folder and the Uninstalled Fonts folder.
6. Place both aliases on your desktop.

7. When necessary, use the aliases to open both folders and move fonts between them.

If you have any applications running, you must quit and restart them in order to view and use the newly installed fonts.

You can also try combining fonts from multiple suitcases into a single suitcase.

Setting up the Fiery in the Mac OS X Print Center

If Auto-setup does not work and you are prompted to select the printer description file, select the appropriate Sharp AR-C360P file on your hard disk in the System:Library:

Printers:PPDs:Contents:Resources:language folder (for example, en.lproj folder).

Index

A

Adobe PageMaker for Windows,
see PageMaker for Windows

C

Calibrat folder, for Windows
users 1-75

Calibration folder, for Mac OS
users 2-94

Chooser

setting up color server
in 4-101

Clrfiles folder 1-75

CMYK Color Reference.ps 2-94

Cmyk_ref.ps 1-75

Color Files folder 2-94

Color Files folder, for Mac OS
users 2-94

color reference files

for Windows users 1-75

ColorSync Profiles 2-82

ColorWise Pro Tools 1-65

configuring the connection to
the Fiery

(Mac OS) 2-84

(Windows) 1-68

installing for Mac OS 2-82

installing for Windows 1-65

colour reference files 2-93

for Mac OS users 2-94

Command WorkStation 10

configuring the

connection 1-70

installing for Windows 1-65

Command WorkStation LE

configuring the connection for
Mac OS X 2-91

Configuration

page 1-43, 1-55, 1-68

connecting

Windows 2000/XP with TCP/
IP 1-51

Windows 98/Me with parallel
port 1-22

Windows NT 4.0 with parallel
port 1-38, 1-50

connection on Windows,

configuring 1-68 to 1-70

Custom21.ps (Mac OS) 2-94

Custom21.ps (Windows) 1-75

Custom34.ps (Mac OS) 2-94

Custom34.ps (Windows) 1-75

D

device name 1-69, 2-86, 2-87

DNS name 1-68, 2-87

Domain Name Server, see DNS

Driver CD

troubleshooting fonts 4-101

Drivers CD

contents (Mac OS) 2-81

E

Efirgb.icc monitor settings file for
Mac OS 2-95

Efirgb.icm monitor settings file for
Windows 1-76

E-mail printing,

installing 1-59, 1-65

F

Fiery Downloader 1-65

installing for Windows 1-65

Fiery Spooler

configuring the connection on
Mac OS 2-87 to 2-88

- modifying the configuration (Mac OS) 2-88
- Fiery utilities
 - configuring the connection on Windows 1-68 to 1-70
 - installing for Mac OS 2-82
 - installing for Windows 1-65
 - problems on Windows 4-101
- Fiery WebTools
 - setting up 3-99
 - Status 11
 - WebDownloader 11
 - WebLink 11
 - WebSetup 11
- fonts
 - installing 4-101
- Fonts folder 4-101
- Frame Type option 1-27

I

- ICC device profile 2-98
 - loading in Photoshop 4.0 (Mac OS) 2-98
 - loading in Photoshop 6.x (Mac OS) 2-98
- ICC monitor settings profile, specifying in Photoshop (Mac OS) 2-97
- Icm folder (Windows) 1-75
- Installable Options
 - specifying, from Windows 2000/XP printer driver 1-47
 - specifying, from Windows 98 printer driver 1-20
 - specifying, from Windows 98/Me printer driver 1-20
 - specifying, from Windows NT 4.0 printer driver 1-36
 - specifying, from Windows NT printer driver 1-36
- Installers

- Windows 1-65
- installers
 - Mac OS 2-82
- Installing
 - Adobe PostScript printer, Windows 2000/XP/Server 2003 1-44
 - Adobe PostScript printer, Windows 98/Me 1-17
 - Adobe PostScript printer, Windows NT 4.0 1-33
 - Command WorkStation 1-65
 - PCL printer driver, Windows 98/Me 1-17
 - software for Windows 1-65
- installing
 - Mac OS software 2-82
 - software for Mac OS 2-82
- IP address 1-70
- IPP printing setup
 - on Windows 2000/XP/Server 2003 1-57 to 1-58
 - on Windows 98/Me 1-32
- IPX
 - printing for Windows 2000/XP/Server 2003 1-53 to 1-54
- printing for
 - Windows NT 4.0 1-41
 - Windows 2000/XP/Server 2003 1-52
 - Windows NT 4.0 1-39
- IPX/SPX
 - Windows 2000/XP/Server 2003 1-52
 - Windows NT 4.0 1-39

J

- Java 1-65, 3-99
- Java Runtime Environment (JRE) 1-65

JRE, see Java Runtime
Environment 1-65

M

Mac OS X
 setting up server in 4-102
Mac OS
 copying colour files 2-93
 installing Fiery
 utilities 2-81, 2-82
 installing software 2-82
 printer setup 2-81
 troubleshooting 4-101
monitor settings file, Mac OS 2-97

N

NetWare client setup
 Windows 98/Me 1-29
 Windows 2000/XP/
 Server 2003 1-52
 Windows NT 4.0 1-39

P

PageMaker for Windows 1-80
PANTONE Book.ps 2-94
PANTONE.ps 1-75
parallel port
 Windows 98/Me 1-22 to 1-26
PCL printer driver
 Windows 98/Me 1-17 to 1-19
Photoshop 5.0
 loading the ICC device settings
 profile (Mac OS) 2-98
 loading the ICC monitor
 settings file (Mac OS) 2-97
 loading the ICM device profile
 (Windows) 1-78
 loading the RGB working space
 profile (Windows) 1-77
Photoshop 6.x
 loading the ICC device settings
 profile (Mac OS) 2-98

 loading the ICC monitor
 settings file (Mac OS) 2-98
 loading the ICM device profile
 (Windows) 1-79
 loading the ICM monitor
 settings file (Windows) 1-79
PostScript
 printing from Mac OS 2-81 to
 ??
 printing from
 Windows 1-17, 1-44
PostScript printer driver
 Windows 2000/XP/
 Server 2003 1-44
 Windows 98/Me 1-17
 Windows NT 4.0 1-33 to 1-35
PostScript printing
 Windows 98/Me 1-17
PowerPoint, RGB color reference
 file 2-94
PPD
 copying files for Windows
 applications 1-80
 selecting the PPD in the
 Chooser 4-101
 selecting the PPD in the Print
 Center 4-102
Print Center
 setting up server in Mac
 OS X 4-102
Printer Driver, installable options
 Windows 2000/XP/
 Server 2003 1-47
 Windows 98/Me 1-20
 Windows NT 4.0 1-36
 Windows 98 1-20
 Windows NT 1-36
Printer drivers, see PostScript
printer drivers
printer setup
 Mac OS 2-81

Printing
 Windows 2000/XP 1-49
 Windows 2000/XP/
 Server 2003 1-49
 Windows NT 4.0 1-38
printing
 see also PostScript printing

R

RGB page 01 2-94
RGB page 02 2-94
Rgb_01.doc 1-75
Rgb_02.ppt 1-75

S

screen fonts 4-101
SMB printing setup
 on Windows 2000/XP/
 Server 2003 1-54 to 1-56
 on Windows 98/Me 1-29 to
 1-31
 on Windows NT 4.0 1-41 to
 1-43
Stand21.ps (Mac OS) 2-94
Stand21.ps (Windows) 1-75
Stand34.ps (Mac OS) 2-94
Stand34.ps (Windows) 1-75
Status WebTool, *see* Fiery
 WebTools
Sun Java file 1-65

T

troubleshooting
 Mac OS computers 4-101
 Windows computers 4-100

U

Uninstalled Fonts folder 4-101
User Software CD
 contents (Windows) 1-65
Utilities CD

installing from, for
 Mac OS 2-93

W

WebDownloader WebTool, *see*
 Fiery WebTools
WebSetup WebTool, *see* Fiery
 WebTools
Windows
 copying color files 1-75
 installing Fiery utilities 1-65
 troubleshooting 4-100
Windows 98/Me
 parallel port 1-22 to 1-26
 setting up PostScript
 printing 1-17
 SMB printing 1-29 to 1-31
 troubleshooting 4-100
Windows 2000/XP
 printing requirements 1-49
 setting up PostScript
 printing 1-44
 troubleshooting 4-100
Windows 2000/XP/Server 2003
 IPX 1-53 to 1-54
 IPX/SPX 1-52
 printing requirements 1-49
Windows NT 4.0
 IPX 1-41
 IPX/SPX 1-39
 PostScript printer driver 1-33
 printing requirements 1-38
 troubleshooting 4-100
WINS Name Server 1-43, 1-55
Word, RGB colour reference
 file 2-94