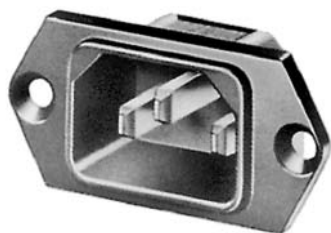
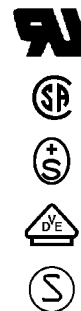


Actual information about approvals can be found on
<http://www.schurter.com/approvals>



6100-3

C14



70 °C

Description

- Panel mount:
Screw-on version from front or rear-side
- Connector, Pin temperature 70 °C, Protection class I
- Solder terminals or quick connect terminals
- Alternative: protection class II version

Other versions on request:

- Types for rivet mounting available upon request

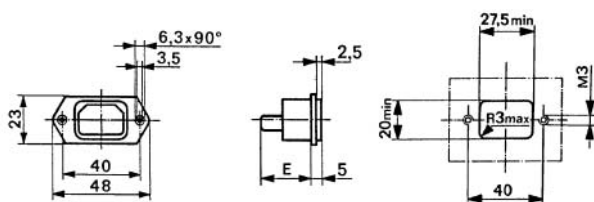
Technical data

| | |
|---------------------------|---|
| Ratings IEC | 10 A / 250 VAC; 50 Hz |
| Ratings UL/CSA | 15 A / 250 VAC; 60 Hz |
| Dielectric strength | > 2 kVAC between L-N > 2 kVAC between L/N-PE (1 min/50 Hz) |
| Allowable operation temp. | -25 °C to 70 °C |
| Degree of protection | from front side IP40 acc. to IEC 60529 |
| Protection class | Suitable for appliances with protection class I acc. to IEC 61140 |

| | |
|--------------------------|--|
| Terminals | Solder terminals or quick connect terminals |
| Panel thickness s | Screw-on: max 8 mm Mounting screw torque max 0.5 Nm |
| Materials: Housing | Thermoplastic, black, UL 94V-0 |
| Appliance-inlet /-outlet | C14 acc. to IEC/EN 60320-1, UL 498, CSA C22.2 no. 42 (for cold condition) pin-temperature 70 °C, 10 A, Protection class I |

Dimensions

6100-3 (6102-3)



E: Solder terminals 20.5 mm
 E: Quick connect terminals 23.5 mm

Variants

| Order Number | Type | Protection class | Panel mounting | Panel thickness s [mm] | Terminals |
|--------------|--------|------------------|----------------|------------------------|--------------------------------------|
| 6100.3200 | 6100-3 | I | Screw-on | | Quick connect terminals 4.8 x 0.8 mm |
| 6100.3300 | 6100-3 | I | Screw-on | | Quick connect terminals 6.3 x 0.8 mm |
| 6100.3100 | 6100-3 | I | Screw-on | | Solder terminals 3.5 x 0.8 mm |

Packaging unit 50 Pcs

Accessories

ACCESSORIES