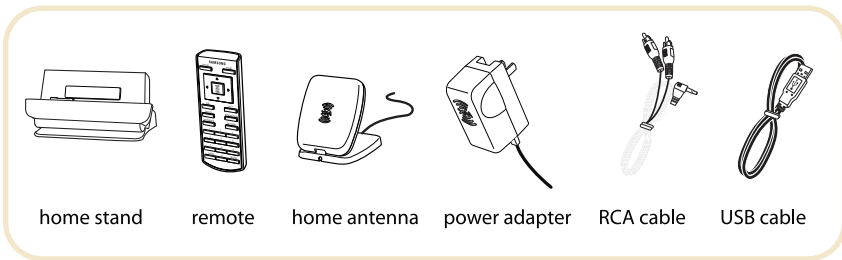
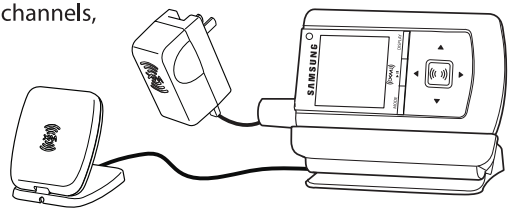


What's in the box?
Helix™ Home Kit YA-CD100

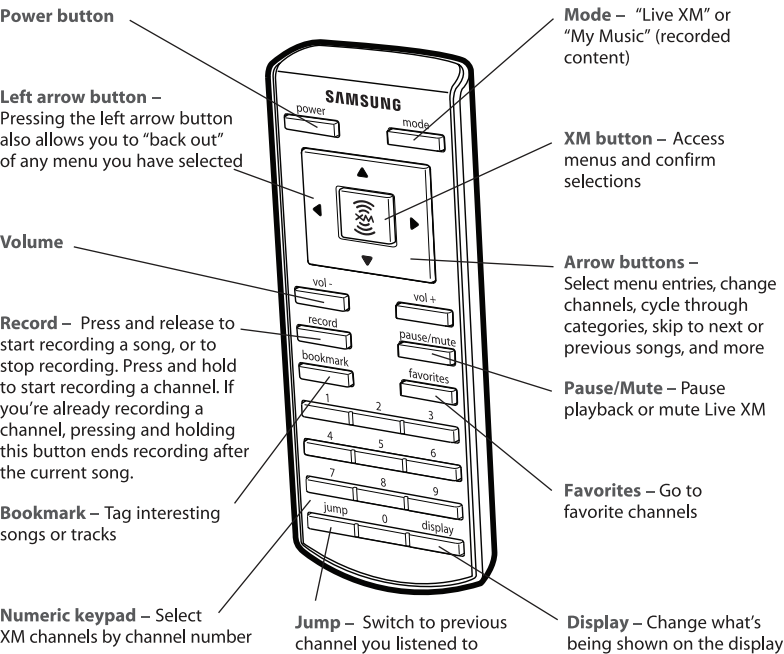


- Helix™ home kit
- Listen to Live XM* and recorded XM* content
 - Play MP3 and WMA files
 - Manage your tracks, favorite channels, and playlists
 - Listen in your car or home



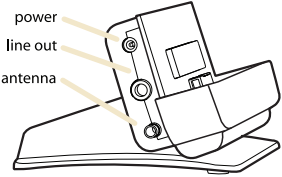
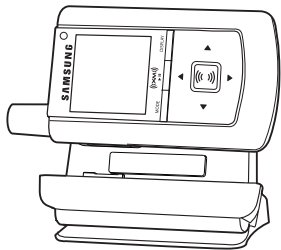
*Hardware and required monthly subscription sold separately. Recorded music not for use in commercial establishments. Installation cost and other fees and taxes, including a one-time activation fee may apply. Subscription fee is consumer only. XM products, programming, services, and fees are subject to change, at any time, without notice. Channels with frequent explicit language are indicated with an XL. Channel blocking is available for XM radio receivers by calling 1-800-XM-RADIO. Subscriptions subject to Customer Agreement available at xmradio.com. XM service only available in the 48 contiguous United States. ©2006 XM Satellite Radio Inc. All rights reserved.

Remote

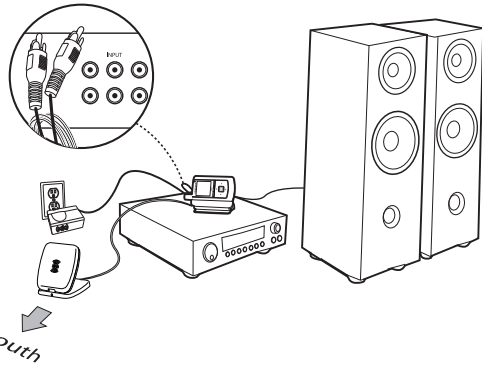


Setup: At Home

1. Insert Helix into the home stand.



2. Connect Helix to your audio system. Connect the power adapter, RCA cable and home antenna.



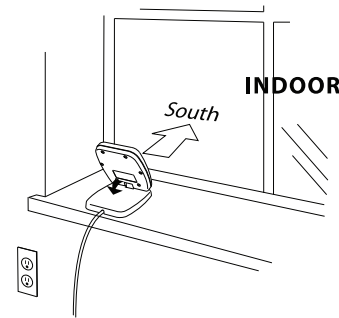
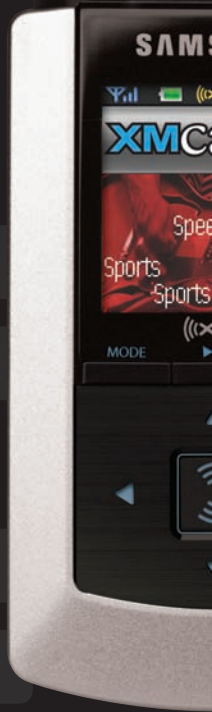
3. You can also connect Helix to your computer. See your Helix user guide for installation and requirements.

WARNING: Use only the USB cable supplied in the package. Other USB cables may not allow your Helix to charge its battery or communicate with your PC.

SAMSUNG

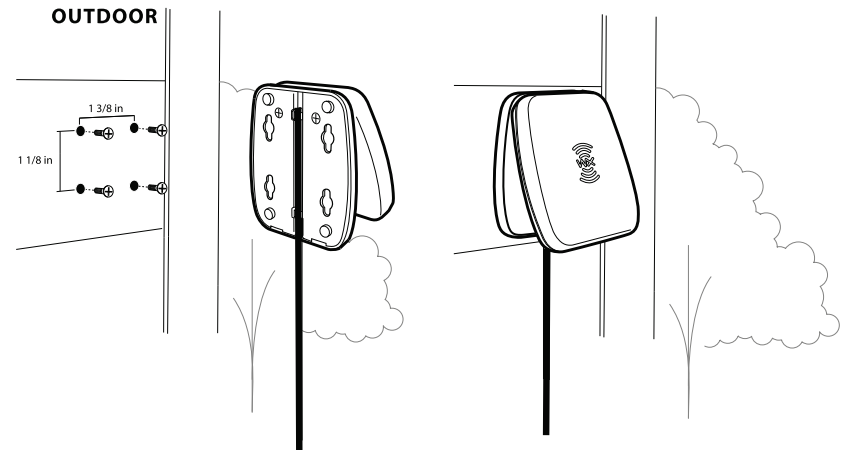
home and car
install guide

HELIX™
xm2go Satellite Radio with MP3



4. Place the home antenna in or near a southern - facing window for optimal indoor reception.

5. To optimize signal reception, you may mount the home antenna outdoors, facing south.



Warranty

Samsung warrants MP3 players to be free of defects in material and workmanship for a period of twelve (12) months from the original date of purchase by the consumer. If during the period of warranty this product proves defective under normal use and service, you should return the product to the retailer from whom it was originally purchased, or to any Samsung Authorized Dealer or Authorized Service Center, if outside the time limit for returns imposed by the retailer. The liability of Samsung and its appointed maintenance company is limited to the cost of repair and/or replacement of the unit under warranty.

For further information relating to the Authorized Service Centers, contact 1-800-SAMSUNG (1-800-726-7864).

Warranty Conditions

- The warranty is only valid upon presentation of the proof of purchase consisting of original invoice or sales slip confirmation, indicating the date of purchase, retailer's name, model, serial number and product number. Samsung reserves the right to refuse warranty service if this information has been removed or changed after the original purchase of the product from the retailer.
- Samsung's sole obligations are to the repair of the defective part, or at its discretion, replacement of the product (service exchange unit).
- Warranty repairs must be carried out by an Authorized Samsung Dealer/Service Center. No reimbursement will be made for repairs carried out by non-Samsung Centers, and warranty coverage will not be valid for any repairs or damage caused by such repairs.
- Repair or replacement under the terms of this warranty does not give right to extension to or a new starting of the period of warranty. Repair or direct replacement under the terms of this warranty may be fulfilled with functionally equivalent service exchange units.

- The warranty is not applicable in cases other than defects in material and workmanship. The warranty does not cover the following:
 - Periodic checks, maintenance, repair and replacement of parts due to normal wear and tear.
 - Abuse or misuse, including but not solely limited to the failure to use this product for its normal purpose in accordance with Samsung's instructions for usage and maintenance.
 - Use of the product in conjunction with accessories not approved by Samsung for use with this product.
 - Failure of or damage to the product arising from incorrect installation or use inconsistent with technical or safety standards, or failure to comply with product manual instructions.
 - Accidents, Acts of God, lightning, water, fire, public disturbances, improper ventilation or any cause beyond the control of Samsung.
 - Unauthorized modifications carried out for the product to comply with local or national technical standards in countries for which the Samsung product was not originally designed.
 - Repairs performed by non-authorized service centers such as opening of the product by a non-authorized person.
 - Products that have had model numbers, serial numbers, or product number on the product altered, deleted, removed or made illegible.
- This warranty does not affect the consumer's statutory rights nor the consumer's rights to return the product to the retailer under the retailer's return policy.

SAMSUNG



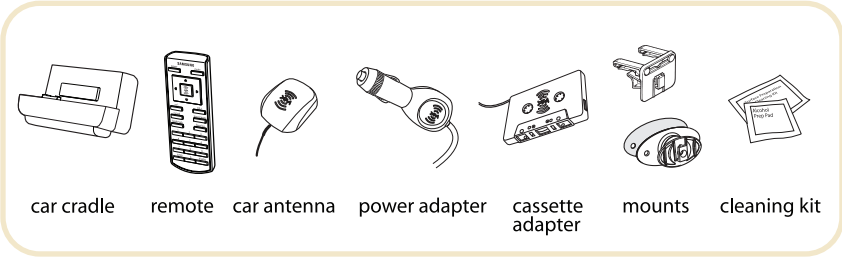
Samsung Electronics America, Inc.
400 Valley Road
Mount Arlington, NJ 07856
1-800-SAMSUNG (1-800-726-7864)
www.samsung.com

XM respects copyrights. This device is for personal use only. XM Programming stored on the device cannot be transferred off the unit. Download legally. Buy digital music from XM+Napster.

The XM name, related logo, and Helix are trademarks of XM Satellite Radio Inc. All rights reserved. All other trademarks are the property of their respective owners.

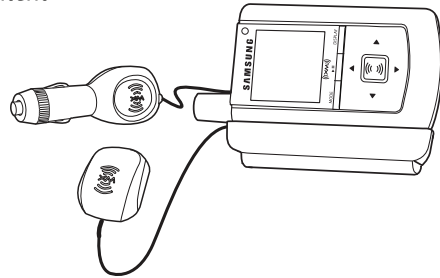
What’s in the box?

Helix™ Car Kit YA-CP100



Helix™ car kit

- Listen to Live XM* and recorded XM* content
- Play MP3 and WMA files
- Manage your tracks, favorite channels, and playlists
- Listen in your car or home



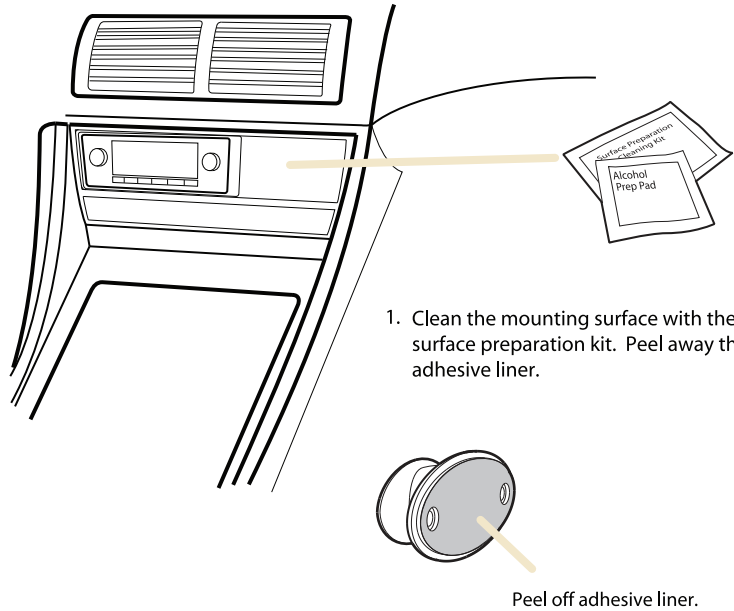
*Hardware and required monthly subscription sold separately. Recorded music not for use in commercial establishments. Installation cost and other fees and taxes, including a one-time activation fee may apply. Subscription fee is consumer only. XM products, programming, services, and fees are subject to change, at any time, without notice. Channels with frequent explicit language are indicated with an XL. Channel blocking is available for XM radio receivers by calling 1-800-XM-RADIO. Subscriptions subject to Customer Agreement available at xmradio.com. XM service only available in the 48 contiguous United States. ©2006 XM Satellite Radio Inc. All rights reserved.

Setup: In Car

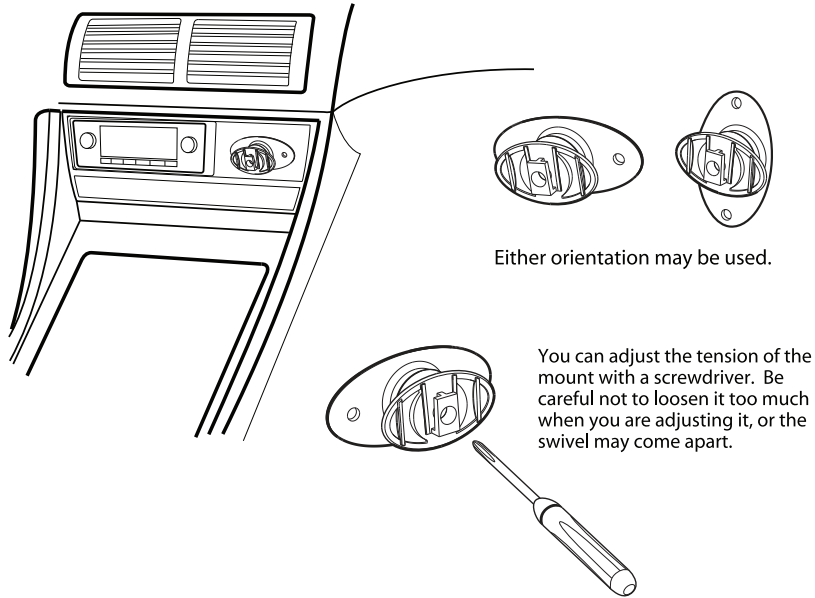
Choose the best way to mount your car cradle.

How to use the swivel mount

To install the swivel mount, first find a suitable location. The swivel mount’s adhesive is very strong and may be difficult to remove. Do not install this mount on leather surfaces and make sure the air temperature is at least 60°F.



2. Firmly press the swivel mount to the surface for 30 seconds. Allow 24 hours before using the mount.

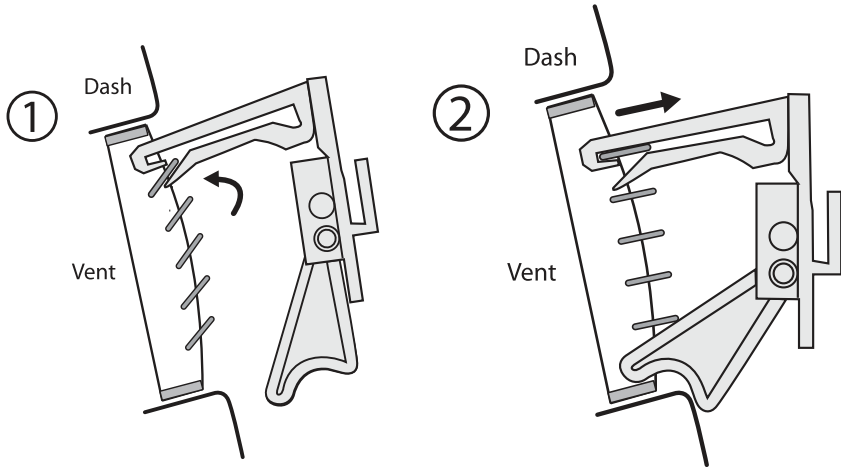


If you need to remove the mount, carefully lift the adhesive pad with your fingers or a spoon. Warming with a hair dryer for several minutes will help soften the adhesive.

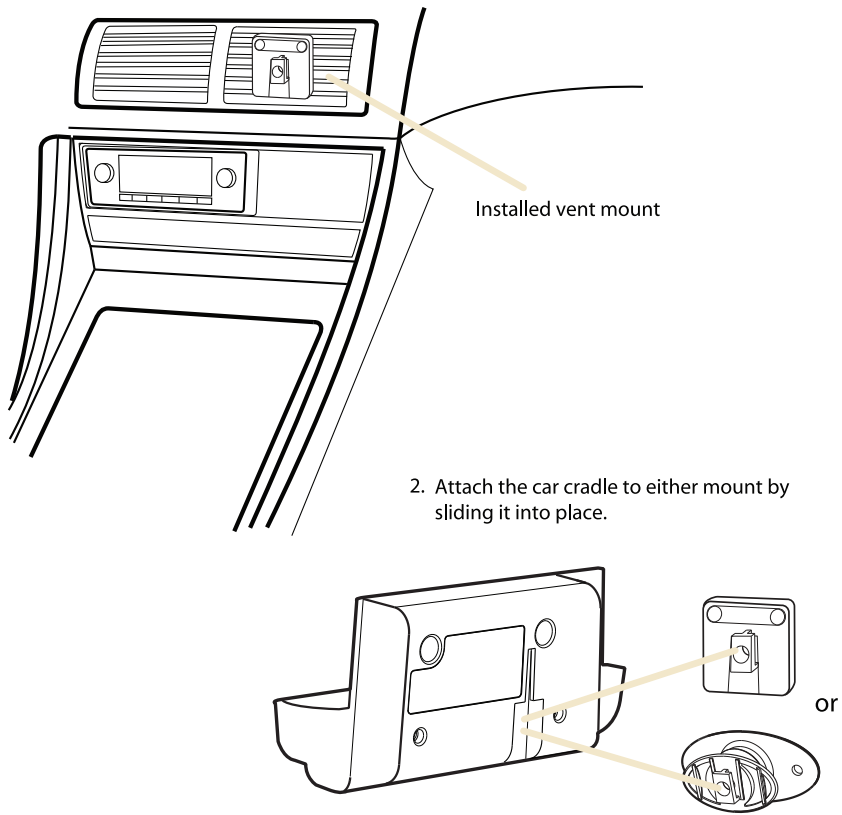
How to use the vent mount

To install the vent mount, find a horizontal vent that is strong enough to hold your Helix and its car cradle.

1. To insert the vent mount, push it into the vent as shown.

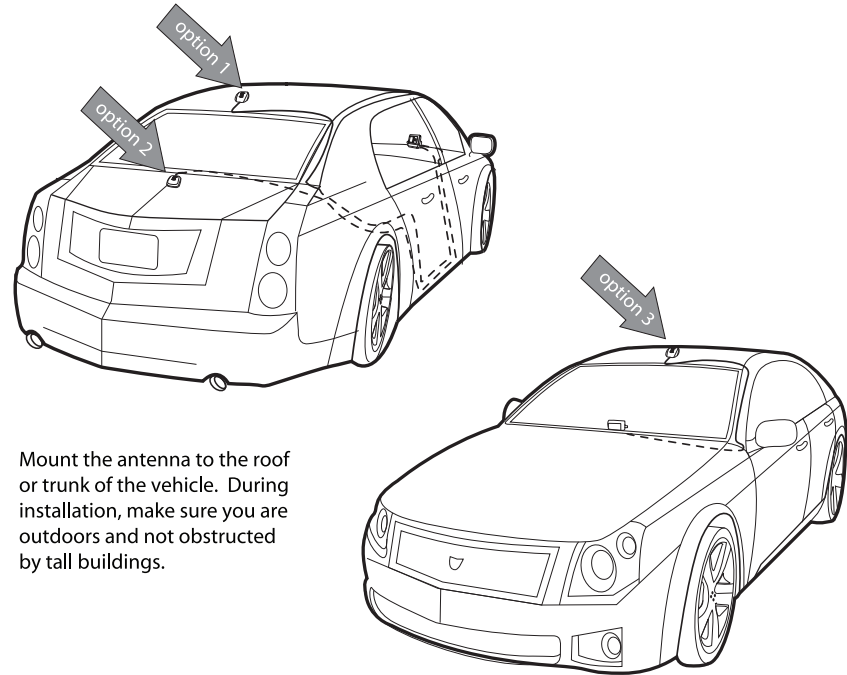


To remove the vent mount, push it into the vent and lift upwards slightly to release the mount’s hooks from the vent vane.



How to install the antenna

Every vehicle is different; for your safety, follow all instructions carefully. Consult a professional installer if you have questions.

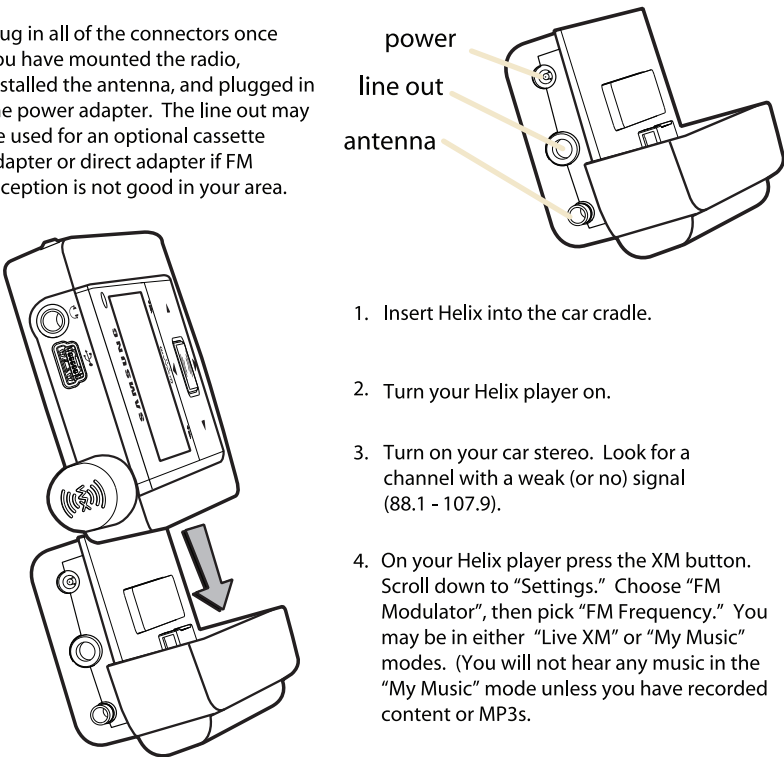


Mount the antenna to the roof or trunk of the vehicle. During installation, make sure you are outdoors and not obstructed by tall buildings.

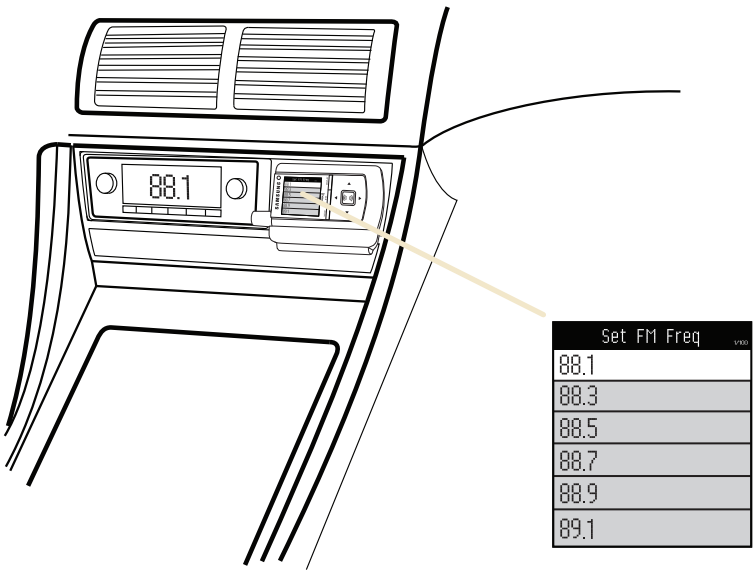
Warning: Failure to properly install the antenna may result in injury to yourself or to others if it becomes detached during an accident.

How to receive XM through your car stereo

Plug in all of the connectors once you have mounted the radio, installed the antenna, and plugged in the power adapter. The line out may be used for an optional cassette adapter or direct adapter if FM reception is not good in your area.



1. Insert Helix into the car cradle.
2. Turn your Helix player on.
3. Turn on your car stereo. Look for a channel with a weak (or no) signal (88.1 - 107.9).
4. On your Helix player press the XM button. Scroll down to “Settings.” Choose “FM Modulator”, then pick “FM Frequency.” You may be in either “Live XM” or “My Music” modes. (You will not hear any music in the “My Music” mode unless you have recorded content or MP3s.



5. Follow the on-screen instructions to choose the same frequency as you chose on your car stereo. You should now be able to hear XM through your car stereo.