

TT4030 (SE-GM28) Installation Manual



TT4030 (SE-GM28) Wireless Modem Unit

Sony Ericsson GM28
Original Equipment Manufactured by Sony Ericsson Mobile Communications International





Topp Consumer Products is an authorized distributor of the TT4030 (SE-GM28) Wireless Modem Unit, manufactured by Sony Ericsson Mobile Communications International and distributed by Sony Ericsson Mobile Communications International as the GM28 Wireless Modem Unit. Topp Consumer Products distributes product documentation for the SE-GM28 under license from Sony Ericsson Mobile Communications International. Some materials provided under license from Sony Ericsson Mobile Communications AB.

Other services provided using the TT4030 (SE-GM28) Wireless Modem Unit

CAUTION: TOPP CONSUMER PRODUCTS DOES NOT PROVIDE, AND IS NOT RESPONSIBLE FOR ANY AND ALL SERVICES PROVIDED IN CONJUNCTION WITH THE TT4030 (SE-GM28) WIRELESS MODEM UNIT. IT IS YOUR RESPONSIBILITY TO OBTAIN THESE SERVICES FROM ANY THIRD PARTY OF YOUR CHOICE, INCLUDING, IF AVAILABLE, FROM THE DISTRIBUTOR FROM WHICH YOU PURCHASED THIS TT4030 (SE-GM28) WIRELESS MODEM UNIT. OTHER THAN THE LIMITED WARRANTY SET FORTH IN THIS INSTALLATION MANUAL, NOTHING ELSE CONTAINED IN THE MANUAL OR OTHER PRODUCT DOCUMENTATION SHALL BE CONSTRUED TO CREATE AN EXPRESS WARRANTY OF ANY KIND WHATSOEVER WITH RESPECT TO THE PRODUCT.

Customer Service

INSTALLATION: If you encounter problems during the installation of this product, or cannot find the information you need, please contact your distributor or Topp Consumer Products Customer Service. Refer to the TT4030 (SE-GM28) Owner's Manual for complete information on the characteristics and operation of this product. The contact numbers and e-mail address for Topp Consumer Products Customer Service are:

Telephone number: +1-786-331-3300
Fax Number: +1-786-331-3333

E-mail address: telematic@toppcompanies.com
Website: www.toppcompanies.com

Technical Support is available from 9:00 AM to 5:00 PM Eastern Time, Monday to Friday. To expedite the support process, please have the product S/N, ESN or IMEI and model number available when contacting Topp Consumer Products Customer Service.

In the event that your equipment requires service, you must contact Topp Consumer Products Customer Service to obtain a Return Merchandise Authorization (RMA) number before returning any product. Send your request by E-mail to the address indicated above for instructions and requirements for requesting an RMA. If you are returning a product for repair, you must also provide a fault description before Topp Consumer Products will issue an RMA number. When providing the RMA number, Topp Consumer Products will provide you with shipping instructions to assist you in returning the equipment. You must provide a purchase receipt or other proof of the date of original purchase before warranty service will be rendered.

OPERATION: If you encounter problems during the operation of this product, please contact your service provider to determine whether the problem is service and/or product-related. Topp Consumer Products does not provide, and is not responsible for any and all services provided in conjunction with the product. It is your responsibility to obtain these services from any third party of your choice, including, if available, from your distributor. Topp Consumer Products Customer Service is available only for problems related to the TT4030 (SE-GM28) Wireless Modem unit itself.

We have made every reasonable effort to assure the accuracy and usefulness of this manual, however we are not responsible for errors or omissions contained in this manual or for the misuse or misapplication of the product. Due to our continuing program of product development and improvement, the specifications and features of our product are subject to change without notice.

No part of this publication may be reproduced in any form, in whole or in part, without the written permission of Topp Consumer Products.

© 2003 Topp Consumer Products. All rights reserved.

The Topp Consumer Products names, product names and logos are trademarks or registered trademarks of Topp Consumer Products. Other product names are trademarks or registered trademarks of their respective owners. The Sony Ericsson marble logo is the trademark or registered trademark of Sony Ericsson Mobile Communications AB. Ericsson is the trademark or registered trademark of Telefonaktiebolaget LM Ericsson. Sony is the trademark or registered trademark of Sony Corporation.



Notices, License, and Warranty

CAUTION: TOPP CONSUMER PRODUCTS PROVIDES TO YOU THIS TT4030 (SE-GM28) WIRELESS MODEM PRODUCT ALONE. HOWEVER, THIS TT4030 (SE-GM28) WIRELESS MODEM PRODUCT MAY ALLOW YOU TO RECEIVE WHERE AVAILABLE FROM A THIRD PARTY (SUCH AS YOUR DISTRIBUTOR) OTHER SERVICES ENABLED THROUGH THE USE OF THIS TT4030 (SE-GM28) WIRELESS MODEM PRODUCT. TOPP CONSUMER PRODUCTS DOES NOT PROVIDE, AND IS NOT RESPONSIBLE FOR, ANY SERVICES PROVIDED THROUGH OR IN CONJUNCTION WITH THIS TT4030 (SE-GM28) WIRELESS MODEM PRODUCT.

*If you purchased this TT4030 (SE-GM28) Wireless Modem product directly from Topp Consumer Products, the references above to "Distributor" should be understood to mean Topp Consumer Products.

LICENSE: USING THIS TT4030 (SE-GM28) WIRELESS MODEM PRODUCT IMPLIES ACCEPTANCE OF THE TERMS OF THE LICENSE AGREEMENT SET FORTH BELOW. IF YOU DO NOT AGREE TO THESE TERMS, RETURN THE TT4030 (SE-GM28) WIRELESS MODEM PRODUCT UNOPENED TO TOPP CONSUMER PRODUCTS OR YOUR DISTRIBUTOR FROM WHICH YOU PURCHASED THE PRODUCT.

The use of the software and other proprietary information embedded in the TT4030 (SE-GM28) Wireless Modem product (collectively, the "Proprietary Information") is licensed to you on a non-exclusive, non-transferable, and fully revocable basis and only in machine-readable form (object code) solely and exclusively for use in connection with only one (1) TT4030 (SE-GM28) Wireless Modem product under normal conditions in accordance with the specifications set forth in this manual. All rights not granted herein to the Proprietary Information are expressly reserved by Topp Consumer Products or Sony Ericsson Mobile Communications International, as applicable.

You may use the Proprietary Information only as installed by Sony Ericsson Mobile Communications International on this TT4030 (SE-GM28) Wireless Modem product.

The license is effective for the term specified by Topp Consumer Products or the distributor from which you purchased this TT4030 (SE-GM28) Wireless Modem product. You may terminate it at any time by destroying or disabling this TT4030 (SE-GM28) Wireless Modem product. This license will also terminate if you fail to comply with any term or condition set forth herein.

YOU SHALL NOT, NOR SHALL YOU ALLOW ANYONE ELSE TO COPY, DECOMPILE, DISASSEMBLE OR OTHERWISE REVERSE ENGINEER THE PROPRIETARY INFORMATION, OR ATTEMPT TO DO SO. YOU SHALL NOT, NOR SHALL YOU ALLOW ANYONE ELSE TO REMOVE, COVER OR ALTER ANY PATENT, COPYRIGHT OR TRADEMARK NOTICES PLACED UPON, EMBEDDED IN OR DISPLAYED BY THIS TT4030 (SE-GM28) WIRELESS MODEM PRODUCT OR ITS PACKAGING OR RELATED MATERIALS.

IF YOU TRANSFER POSSESSION OF THIS TT4030 (SE-GM28) WIRELESS MODEM PRODUCT, THIS LICENSE WILL TRANSFER WITH IT IF THE OTHER PARTY ACCEPTS THE TERMS AND CONDITIONS OF THIS LICENSE. YOU MUST IMMEDIATELY NOTIFY TOPP CONSUMER PRODUCTS OF THE TRANSFER. YOU MAY NOT EXPORT OR RE-EXPORT THE PROPRIETARY INFORMATION IN VIOLATION OF ANY APPLICABLE LAWS OR REGULATIONS.

You may not sublicense, assign or transfer this license except as expressly set forth above. Any attempt otherwise to sublicense, assign or transfer any of the rights, duties or obligations hereunder is void.

LIMITED 1-YEAR WARRANTY: The TT4030 (SE-GM28) Wireless Modem product hardware, accessories and supplies are warranted by Topp Consumer Products against defects in materials and workmanship under normal use for a period of one (1) year from the date of original purchase. THIS WARRANTY IS VOID IF THE TT4030 (SE-GM28) WIRELESS MODEM PRODUCT CASING IS OPENED BY ANYONE OTHER THAN A TOPP CONSUMER PRODUCTS AUTHORIZED SERVICE FACILITY.

The software embedded in this TT4030 (SE-GM28) Wireless Modem product is warranted by Topp Consumer Products against failure to perform in substantial conformance with its specifications under normal use for a period of 90 days from the date of valid activation; provided, however, that Topp Consumer Products does not warrant that the operation of the software will be error-free or uninterrupted or that the software functions will meet your requirements or that all defects in the software will be corrected. THIS WARRANTY IS VOID IF YOU BREACH THE SOFTWARE LICENSE SET FORTH ABOVE.

This Limited Warranty is good only to the original purchaser of this TT4030 (SE-GM28) Wireless Modem product, bearing the TT4030 (SE-GM28) label, in the U.S. during the warranty period specified above and is conditioned upon proper use of this TT4030 (SE-GM28) Wireless Modem product. A purchase receipt or other proof of the date of original purchase will be required before warranty service is rendered.



THIS LIMITED WARRANTY DOES NOT COVER: (1) damage, failure or malfunction caused by or attributable to acts of God, abuse, neglect, accident, misuse, improper or abnormal usage, failure to follow instructions, improper installation or maintenance, alteration, lightning or other incidence of excess voltage or current, or any other occurrence beyond the reasonable control of Topp Consumer Products, including, without limitation, services not provided by Topp Consumer Products that may be enabled through the use of this TT4030 (SE-GM28) Wireless Modem product; (2) this TT4030 (SE-GM28) Wireless Modem product, if the serial number has been removed or defaced; (3) any repairs other than those provided by a Topp Consumer Products Authorized Service Facility; (4) malfunctions due to the use of this TT4030 (SE-GM28) Wireless Modem product in conjunction with accessories, products, or ancillary or peripheral equipment not furnished by Topp Consumer Products; (5) consumables such as fuses; (6) any modification of any part of this TT4030 (SE-GM28) Wireless Modem product or any cosmetic damage; (7) use of this TT4030 (SE-GM28) Wireless Modem product at any time not within a valid license period for the embedded software; or (8) any shipment of this TT4030 (SE-GM28) Wireless Modem product (claims must be presented to the carrier).

This Limited Warranty covers batteries (if any) supplied with the TT4030 (SE-GM28) Wireless Modem product only if battery capacity falls below 80% of rated capacity or the battery leaks, and this Limited Warranty does not cover any battery if (a) the battery has been charged by a battery charger not specified or approved by Topp Consumer Products for charging the battery; (b) any seals of the battery are broken or show evidence of tampering; or (c) the battery has been used in equipment other than this TT4030 (SE-GM28) Wireless Modem product.

NO OTHER EXPRESS WARRANTY IS MADE BY TOPP CONSUMER PRODUCTS OR ITS SUPPLIERS NOR IS ANY OTHER EXPRESS WARRANTY APPLICABLE TO THIS TT4030 (SE-GM28) WIRELESS MODEM PRODUCT OR THE PROPRIETARY INFORMATION (INCLUDING THE SOFTWARE). NO IMPLIED WARRANTIES ARE MADE IN RESPECT OF THIS TT4030 (SE-GM28) WIRELESS MODEM PRODUCT OR THE PROPRIETARY INFORMATION (INCLUDING THE SOFTWARE) AND, TO THE EXTENT PERMITTED BY APPLICABLE LAW, TOPP CONSUMER PRODUCTS AND THE MANUFACTURER DISCLAIM ANY AND ALL IMPLIED WARRANTIES IN RESPECT OF THIS TT4030 (SE-GM28) WIRELESS MODEM PRODUCT AND THE PROPRIETARY INFORMATION (INCLUDING THE SOFTWARE). IF ANY IMPLIED WARRANTY APPLIES TO THIS TT4030 (SE-GM28) WIRELESS MODEM PRODUCT OR THE PROPRIETARY INFORMATION (INCLUDING THE SOFTWARE), SUCH IMPLIED WARRANTY IS LIMITED IN DURATION TO THE DURATION OF THE EXPRESS LIMITED WARRANTY SET FORTH ABOVE.

In the event of a breach of warranty, Topp Consumer Products will, at its option, unless otherwise provided by law: (a) correct the defect by repairing this TT4030 (SE-GM28) Wireless Modem product without charge for parts and labor; or (b) replace this TT4030 (SE-GM28) Wireless Modem product with one of the same or similar design (which for all purposes of the provisions of this License, Warranty and Notices section shall also be referred to as "this TT4030 (SE-GM28) Wireless Modem product"). However, Topp Consumer Products will not pay for (i) costs of installation or removal, (ii) costs of product set-up or adjustment, or (iii) shipping or related charges of returning this TT4030 (SE-GM28) Wireless Modem product for repair, regardless of whether the repair is covered by the Limited Warranty set forth above. You must pay for shipment of this TT4030 (SE-GM28) Wireless Modem product to the nearest Topp Consumer Products Authorized Service Facility and, if the warranty claim is valid, Topp Consumer Products will pay for shipment of the repaired or replaced TT4030 (SE-GM28) Wireless Modem product back to you. You must provide a purchase receipt or other proof of the date of original purchase before warranty service will be rendered. All replaced parts and products, and products on which a refund is made, become the property of Topp Consumer Products. Unless prohibited by law, new or reconditioned parts and TT4030 (SE-GM28) Wireless Modem products may be used in the performance of warranty service. Repaired or replaced parts and TT4030 (SE-GM28) Wireless Modem products are warranted for the remainder of the original limited warranty period. You will be charged for the repair or replacement of this TT4030 (SE-GM28) Wireless Modem product made after the expiration of the warranty period.

Applicable law may restrict or prohibit certain of the warranty limitations set forth above, in which case they will not apply to you. You may also have additional rights not stated in this document. If any portion of this limited warranty is illegal or unenforceable, such partial illegality or unenforceability shall not affect the remainder of this limited warranty.

This Limited Warranty allocates the risk of product and software failure between you and Topp Consumer Products, and Topp Consumer Products' pricing of this TT4030 (SE-GM28) Wireless Modem product reflects this allocation of risk and the limitations of liability set forth below. The agents, employees, distributors, and dealers of Topp Consumer Products are not authorized to make modifications to this Limited Warranty, or make additional warranties binding on Topp Consumer Products. Accordingly, additional statements such as dealer advertising or presentation, whether oral or written, do not constitute warranties by Topp Consumer Products and should not be relied upon.



LIMITATION OF LIABILITY: NEITHER TOPP CONSUMER PRODUCTS NOR ITS SUPPLIERS SHALL BE LIABLE FOR THE LOSS OF THE USE OF THIS TT4030 (SE-GM28) WIRELESS MODEM PRODUCT, ACCESSORIES OR THE PROPRIETARY INFORMATION (INCLUDING THE SOFTWARE), NOR FOR THE LOSS OF PROPERTY OR DATA, LOSS OF INCOME, INCONVENIENCE, OR ANY OTHER DAMAGES, WHETHER DIRECT, INDIRECT, SPECIAL, PUNITIVE OR CONSEQUENTIAL, ARISING OUT OF THE USE OF, OR INABILITY TO USE, THIS TT4030 (SE-GM28) WIRELESS MODEM PRODUCT, ACCESSORIES OR THE PROPRIETARY INFORMATION (INCLUDING THE SOFTWARE) OR FOR BREACH OF CONTRACT OR OF ANY EXPRESS OR IMPLIED WARRANTY WHATSOEVER, EVEN IF TOPP CONSUMER PRODUCTS OR ITS SUPPLIERS HAVE BEEN ADVISED OF THE POSSIBILITY OF SUCH DAMAGES AND EVEN IF SUCH DAMAGES ARISE FROM THE NEGLIGENCE OF TOPP CONSUMER PRODUCTS AND/OR ITS SUPPLIERS.

Applicable law may restrict or prohibit certain of the liability limitations set forth above, in which case they will not apply to you. You may also have additional rights not stated in this document. If any portion of this limitation on liability is illegal or unenforceable, such partial illegality or unenforceability shall not affect the remainder of this limitation on liability.

YOU ACKNOWLEDGE THAT THIS TT4030 (SE-GM28) WIRELESS MODEM PRODUCT MAY ALLOW YOU, AT YOUR DISCRETION, TO RECEIVE WHERE AVAILABLE FROM A THIRD PARTY (SUCH AS YOUR DISTRIBUTOR) OTHER SERVICES ENABLED THROUGH THE USE OF THIS TT4030 (SE-GM28) WIRELESS MODEM PRODUCT, AND YOU IRREVOCABLY AND ABSOLUTELY AGREE THAT TOPP CONSUMER PRODUCTS SHALL NOT BE LIABLE IN CONNECTION WITH ANY ACTIONS, OMISSIONS, OR OTHER OCCURRENCES WITH RESPECT TO SUCH SERVICES.

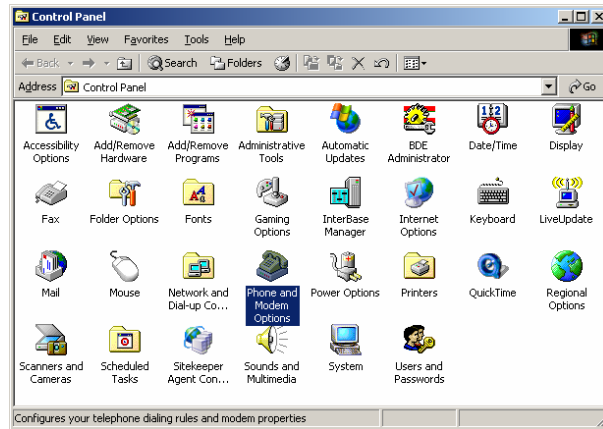
CAUTION: Modifications or adjustments to this TT4030 (SE-GM28) Wireless Modem product, which are not expressly approved by Topp Consumer Products, may void the user's right or authority to operate this TT4030 (SE-GM28) Wireless Modem product.

Table of Contents

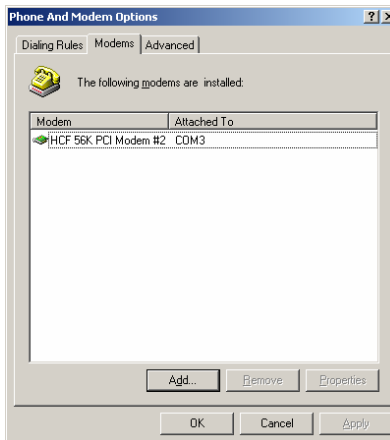
INSTALLING HARDWARE.....	7
CONFIGURE MODEM.....	9
SETUP INTERNET DIALER.....	10
SETUP SERIAL PORT.....	14

Installing Hardware

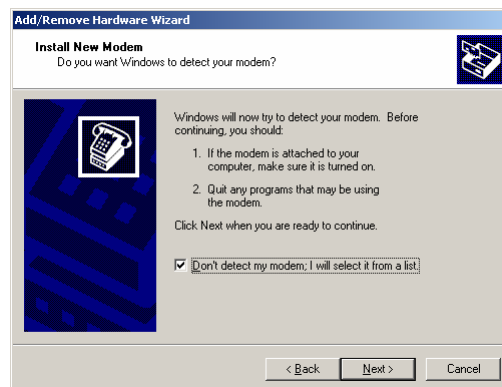
1. Select *Start\Settings\Control Panel*
2. Select *Phone and Modem Options*



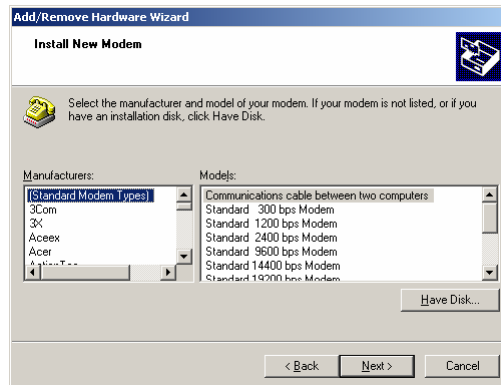
3. Select *Modems*



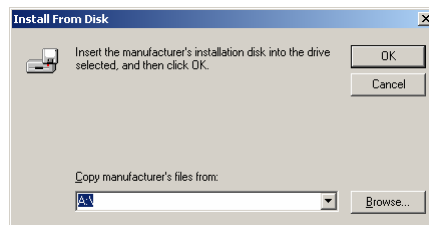
4. Select *Add*
5. Select *Don't detect my modem; I will select it from a list*
6. Press *Next* Button



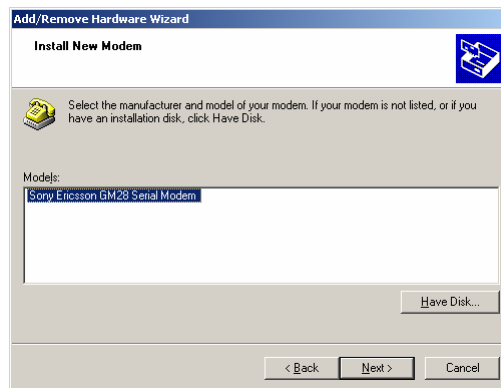
7. Press *Have Disk* Button



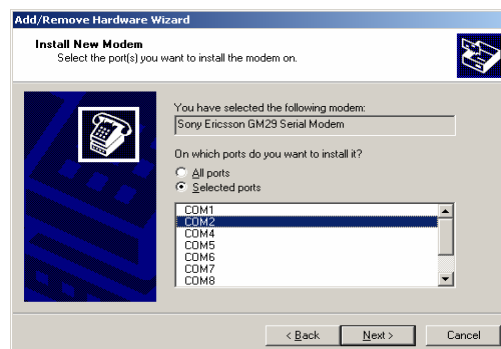
8. Select the correct directory with modem's drive and press *OK* button.



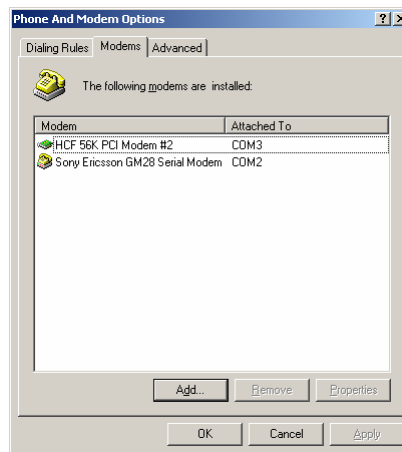
9. Select *Sony Ericsson GM 28 Serial Modem*.



10. Select the port in the where you have connected your modem.



11. Follow the instruction showed in the screen.



Configure Modem

Using a terminal Package (e.g. ProComm, HyperTerminal)

1. Set the baud rate to 9600.
2. Send the command
AT+IPR=115200<CR> (or desired baud rate).
Do not send any more data at 9600 - this will reset the module as well.
3. Change Terminal Package baud rate to 115200.
4. To store user profile in non-volatile memory, send
AT&W<CR>
5. Setup GPRS data parameters (APN, etc.) using AT commands

AT+CGDCONT = X,"IP","**operator's internet APN**", "",0,0

Example:

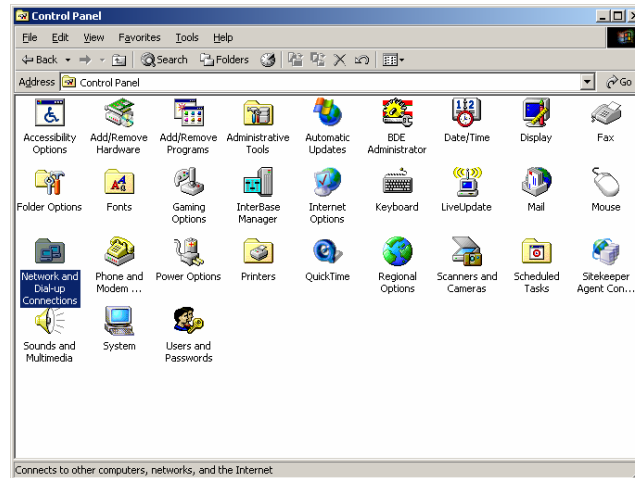
AT+CGDCONT = 1,"IP","**internet3.voicestream.com**", "",0, 0

Review Owner's Manual for more details.

AT+CGATT=1

Setup Internet Dialer

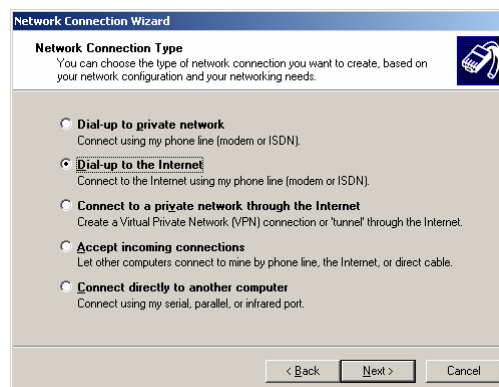
1. Select *Start\Settings\Control Panel*
2. Select *Network And Dial-up Connections*



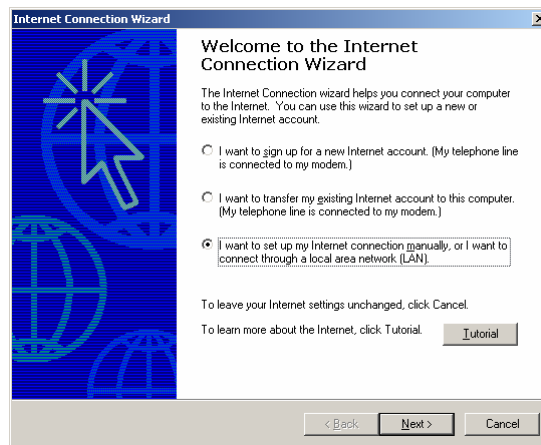
3. Select *Make New Connection*
4. Press *Next* Button



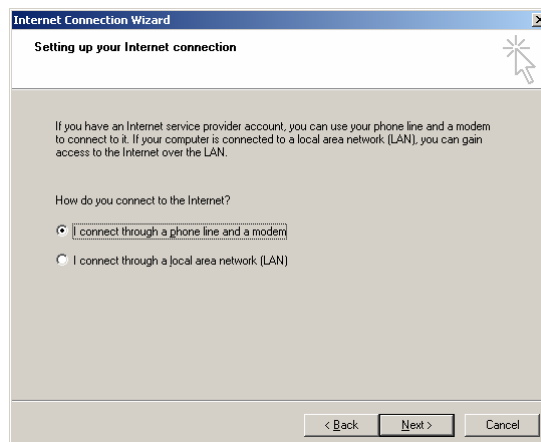
5. Select *Dial-up to Internet* and press *Next* Button.



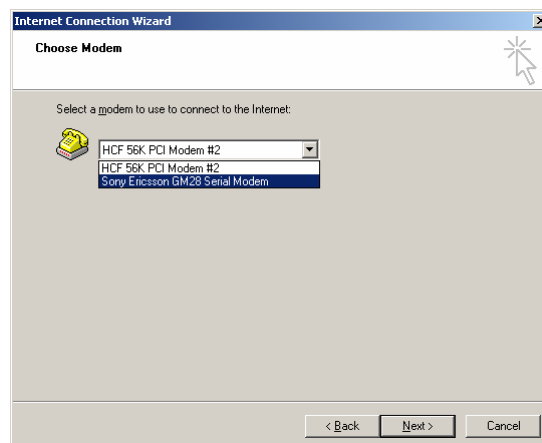
6. Select *I want setup my Internet connection manually, or I want to connect through a local area network (LAN)* and press *Next* Button.



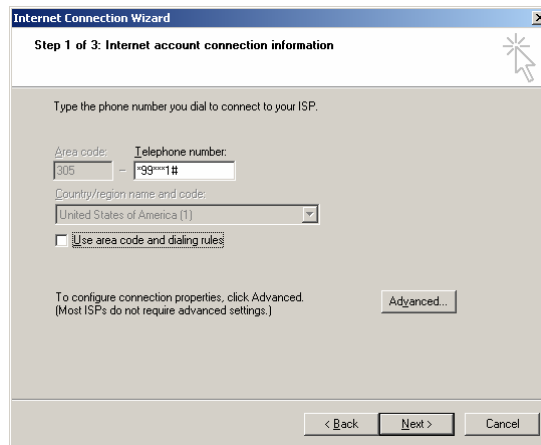
7. Select *I connect through a phone line and a modem* and press *Next* Button.



8. Select the modem previously installed and press *Next* Button.



9. Enter the follows telephone number: *99***X#, where X is the account number defined in the APN and account you want to use. Click in *Use area code and dialing rules* and press *Next* Button.



Internet Connection Wizard

Step 1 of 3: Internet account connection information

Type the phone number you dial to connect to your ISP.

Area code: 305 Telephone number: *99***1#

Country/region name and code: United States of America (1)

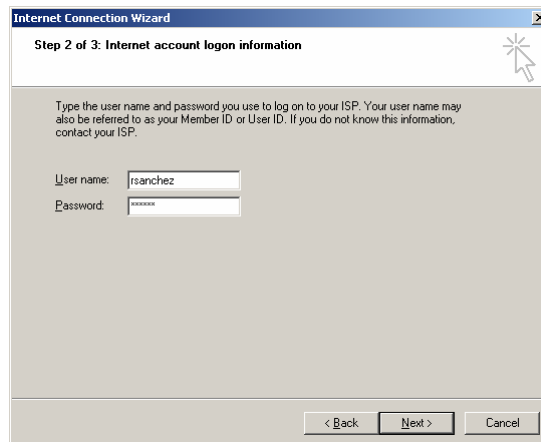
☐ Use area code and dialing rules

To configure connection properties, click Advanced.
(Most ISPs do not require advanced settings.)

Advanced...

< Back Next > Cancel

11. Enter the user name and password to connect the Internet. You can put in the user name your network user name and any thing in password.
12. Press *Next* Button.



Internet Connection Wizard

Step 2 of 3: Internet account login information

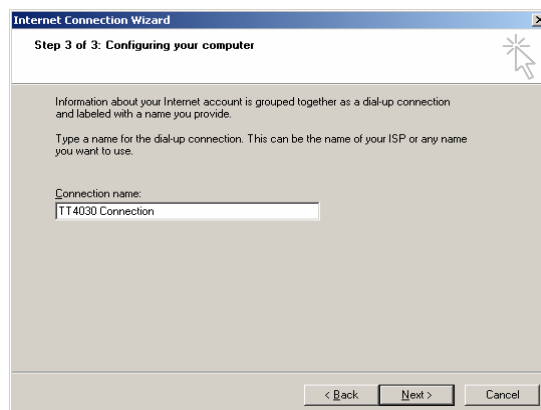
Type the user name and password you use to log on to your ISP. Your user name may also be referred to as your Member ID or User ID. If you do not know this information, contact your ISP.

User name: rsanchez

Password: *****

< Back Next > Cancel

13. Enter the connection name for your Dial-up connection. And press *Next* Button.



Internet Connection Wizard

Step 3 of 3: Configuring your computer

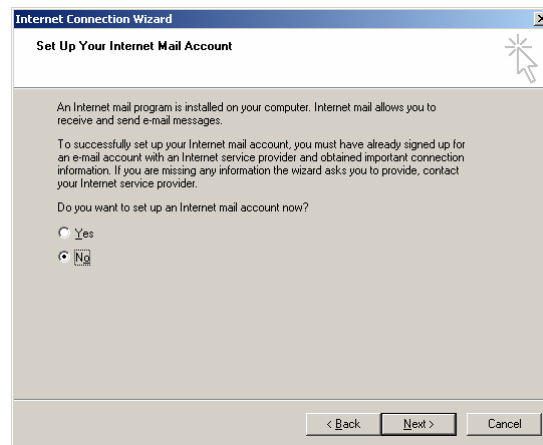
Information about your Internet account is grouped together as a dial-up connection and labeled with a name you provide.

Type a name for the dial-up connection. This can be the name of your ISP or any name you want to use.

Connection name: TT4030 Connection

< Back Next > Cancel

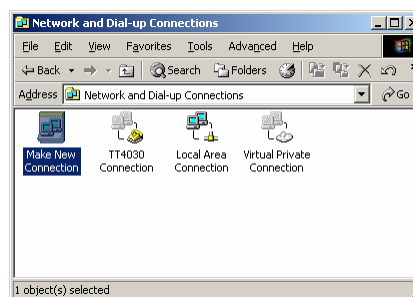
14. Don't set the *Internet mail account* and press *Next* Button.



15. Press *Finish* Button.



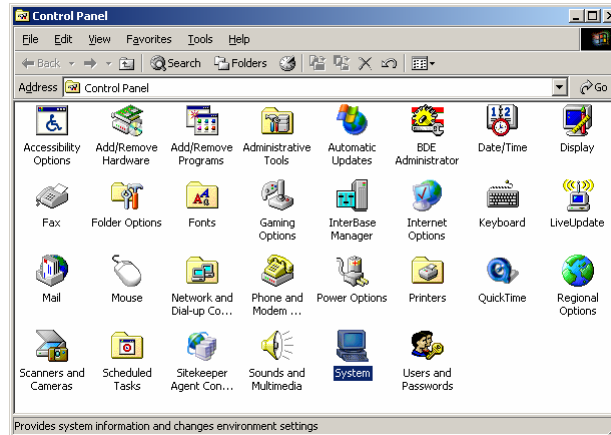
Now, you have the new Connection to Internet.



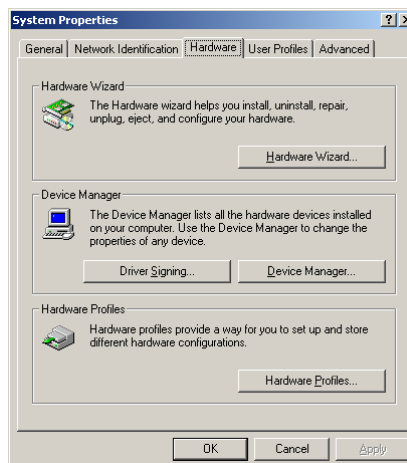
Setup Serial Port

You must setup the serial port to the same speed configured previously in the modem.

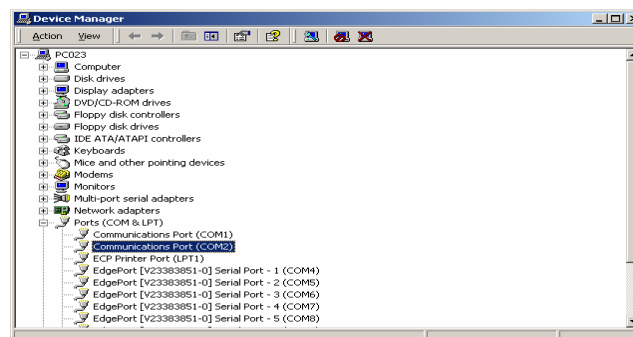
1. Select *Start\Settings\Control Panel*.
2. Select *System*



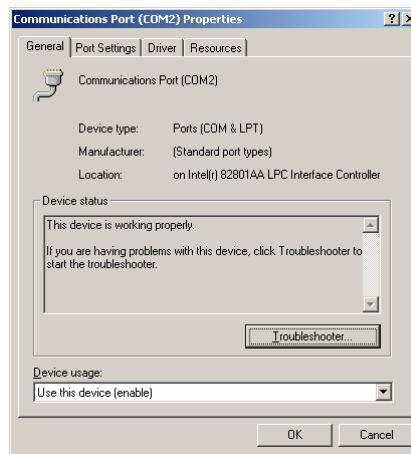
3. Select *Hardware*.
4. Press *Device Manager* Button.



5. Select serial port where was configured your modem.



6. Select *Port Setting* and in the *Bits per second* section select the correct speed (speed previously configured in your modem)



7. Press *OK* Button and close *Device Manager* window

