

## 54M Wireless Access Point TL-WA501G



Adopts eXtended Range™ technology,  
4-9 times the signal coverage  
of traditional 11b/g products

Supports multiple operating modes  
(Access Point, Client, Universal/  
WDS Repeater, Wireless Bridge)

Advanced wireless encryption  
ensures data security



### Description:

The TL-WA501G is a 54M wireless access point compliant with 802.11b and 802.11g standards. It provides the access from the wireless station to wired LAN and vice versa; It can also be used to extend the wireless range. If you find the signal of your wireless router is not strong enough to cover your entire house or office, you can use the TL-WA501G as a repeater to repeat the wireless signal from your wireless router to the AP's location; To build a wireless connection between two buildings, you can use two of this access points to work as a bridge. With so many different functions such as AP, AP Client, AP + Bridge, single / multi-Bridge, and Universal / WDS Repeater, the TL-WA501G is ideal for a diverse number of complex network environments.

## Specifications:

Standards	IEEE 802.11g IEEE 802.11b
Interface	1 10/100M auto-sensing LAN Port
Wireless Signal Rates With Automatic Fallback	11g: 54/48/36/24/18/12/9/6M(dynamic) 11b: 11/5.5/2/1M(dynamic)
Frequency Band	2.4-2.4835GHz
Wireless Transmit Power	17dBm(Max)
Antenna	3dBi detachable Omni directional antenna
Modulation Technology	IEEE 802.11b: DQPSK, DBPSK, DSSS, and CCK IEEE 802.11g: BPSK, QPSK, 16QAM, 64QAM, OFDM
Receiver Sensitivity	54M: -68dBm@10% PER 11M: -85dBm@8% PER 6M: -88dBm@10% PER 1M: -90dBm@8% PER 256K: -105dBm@8% PER
Power Supply Unit	Input: localized to country of sale Output: 9VAC / 0.8A linear PSU
Operating Temperature	0°C~40°C (32°F~104°F)
Storage Temperature	-40°C~70°C (-40°F~158°F)
Relative Humidity	10% ~ 90%, non condensation
Storage Humidity	5%~95% non-condensing
Dimensions	6.2×4.3×1.3 in. 158×110×32 mm

## Diagram:



## Features:

- Supports 54/48/36/24/18/12/9/6Mbps or 11/5.5/3/2/1Mbps wireless LAN data transfer rates
- Adopts 2x to 3x eXtended Range™
- Provides 64/128/152-bit WEP encryption security, WPA/WPA2 and WPA-PSK/WPA2-PSK authentication and TKIP/AES encryption security, Supports MAC address filtering
- Built-in DHCP server supporting dynamic IP address distributing
- Supports multiple operating modes (Access Point, Client, Universal/WDS Repeater, Point to Point, Point to Multi-point)
- Supports Traffic statistics
- Supports firmware web-site upgrade, Web-Site management
- Detachable Antenna (reverse SMA connector)

## Package:

- 54M Wireless Access Point TL-WA501G
- 3dBi detachable Omni directional antenna
- Power supply unit (localized to country of sale)
- Resource CD
- Quick Setup Guide

## Related Products:

- 54M Wireless Router TL-WR542G
- 54M Wireless PCI Adapter TL-WN551G
- External ADSL2+ Router TD-8810
- SOHO Cable/DSL Router TL-R460

Specifications are subject to change without notice. is a registered trademark of TP-LINK Technologies Co., Ltd. Other brands and product names are trademarks or registered trademarks of their respective holders. No part of the specifications may be reproduced in any form or by any means or used to make any derivative such as translation, transformation, or adaptation without permission from TP-LINK Technologies Co., Ltd.

## 150Mbps Wireless Lite N Access Point TL-WA701ND



Adopts Align™ technology,  
and boosts data transfer  
rate up to 150Mbps

Supports multiple operating modes  
(Access Point, Client, Universal/ WDS  
Repeater, Wireless Bridge)

Up to 30 meters Power over Ethernet  
capability for flexible deployment



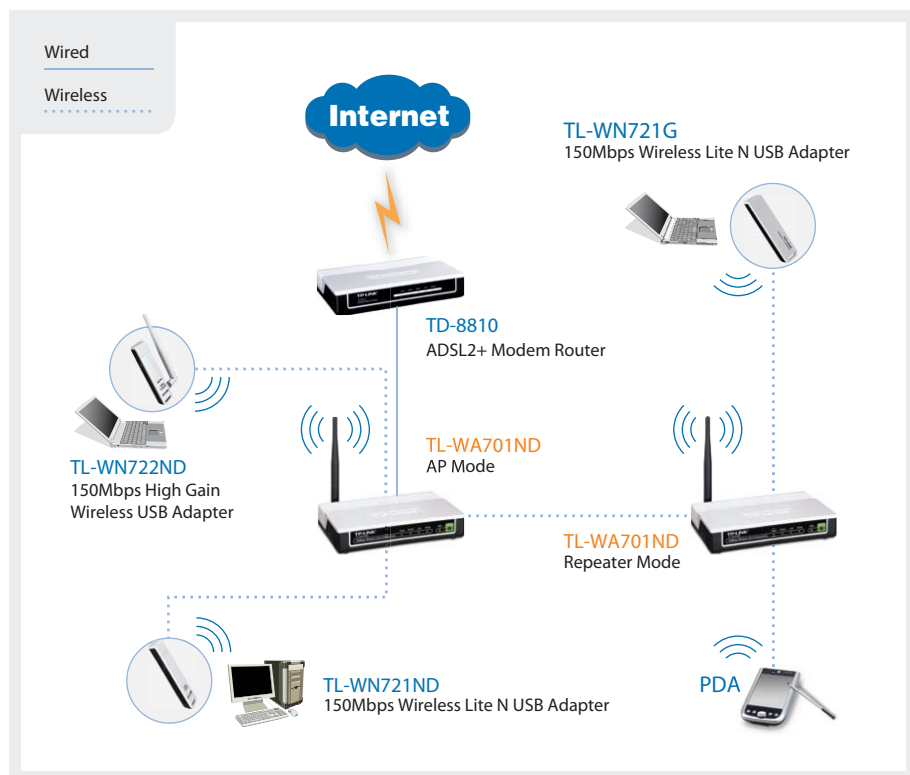
### Description:

The TP-LINK Wireless Lite N Access Point TL-WA701ND is designed to establish or expand a scalable high-speed wireless N network or to connect multiple Ethernet enabled devices such as game consoles, digital media adapters, printers, or network attached storage devices to a wireless network. It is designed using Align™ 1-stream technology to provide high-speed, unrivaled wireless performance for your network at 150 Mbps. Together with CCA™ allowing for range up to 4X that of 11g products. Now, you can enjoy a better Internet experience when downloading, gaming, video streaming or with any other application that you may wish to use.

## Specifications:

Standards	IEEE 802.11g, IEEE 802.11b
Interface	One Ethernet Port(RJ45) Supporting Passive PoE
Wireless Signal Rates With Automatic Fallback	Lite N: Up to 150Mbps(dynamic) 11g: Up to 54Mbps(dynamic) 11b: Up to 11Mbps(dynamic)
Frequency Range	2.4-2.4835GHz
Wireless Transmit Power	20dBm(Max)
Antenna	4dBi detachable Omni directional antenna
Modulation Technology	IEEE 802.11b: DQPSK, DBPSK, DSSS, and CCK IEEE 802.11g: BPSK, QPSK, 16QAM, 64QAM, OFDM
Receiver Sensitivity	130M: -68dBm@10% PER 54M: -68dBm@10% PER 11M: -85dBm@8% PER 6M: -88dBm@10% PER 1M: -90dBm@8% PER 256K: -105dBm@8% PER
Power Supply Unit	Input: localized to country of sale Output: 9VDC / 0.85A Switching PSU
Operating temperature	0°C~40°C (32°F~104°F)
Storage temperature	-40°C~70°C (-40°F~158°F)
Relative humidity	10% ~ 90%, non condensation
Storage Humidity	5%~95% non-condensing
Dimensions	5.9 x 3.9 x 1.1 in. (150*100*28 mm)

## Diagram:



## Features:

- Boost data transfer rate up to 150Mbps
- CCA™ improves wireless performance while automatically avoiding channel conflicts
- Easily setup a WPA encrypted secure connection at a push of the QSS button
- Supports Wi-Fi Multimedia (WMM) assures the quality of VoIP and multimedia streaming
- AP Client mode makes your game console Wi-Fi enabled for a more dynamic wireless gaming experience
- Repeater mode boosts your signal to reach previously unreachable areas
- Wireless bridge easily joins distant hard-to-wire places wirelessly
- Supports up to 30 meters Power over Ethernet capability for flexible deployment
- Up to 4 SSIDs and VLAN support, allowing network administrators to segregate different services or applications to different designated users
- WPA/WPA2 encryptions provide your network with active defense against security threats
- Fully compatible with 802.11b/g/n products
- Detachable antenna allows for stronger antenna upgrades

## Package:

- 150Mbps Wireless Lite N Access Point TL-WA701ND
- Power Injector
- RJ-45 Ethernet Cable
- Quick Installation Guide
- Power Adapter
- Resource CD

## Related Products:

- ADSL2+ Modem Router TD-8810
- 150Mbps Wireless Lite N USB Adapter TL-WN721N
- High gain Wireless Lite N USB Adapter TL-WN722N

Specifications are subject to change without notice. TP-LINK is a registered trademark of TP-LINK Technologies Co., Ltd. Other brands and product names are trademarks or registered trademarks of their respective holders. No part of the specifications may be reproduced in any form or by any means or used to make any derivative such as translation, transformation, or adaptation without permission from TP-LINK Technologies Co., Ltd.

## 300Mbps Wireless N Access Point TL-WA901ND



300Mbps wireless transmission rate, brings smooth wireless N experience

Supports multiple operating modes (Access Point, Client, Universal/ WDS Repeater, Wireless Bridge)

Up to 30 meters Power over Ethernet capability for flexible deployment



### Description:

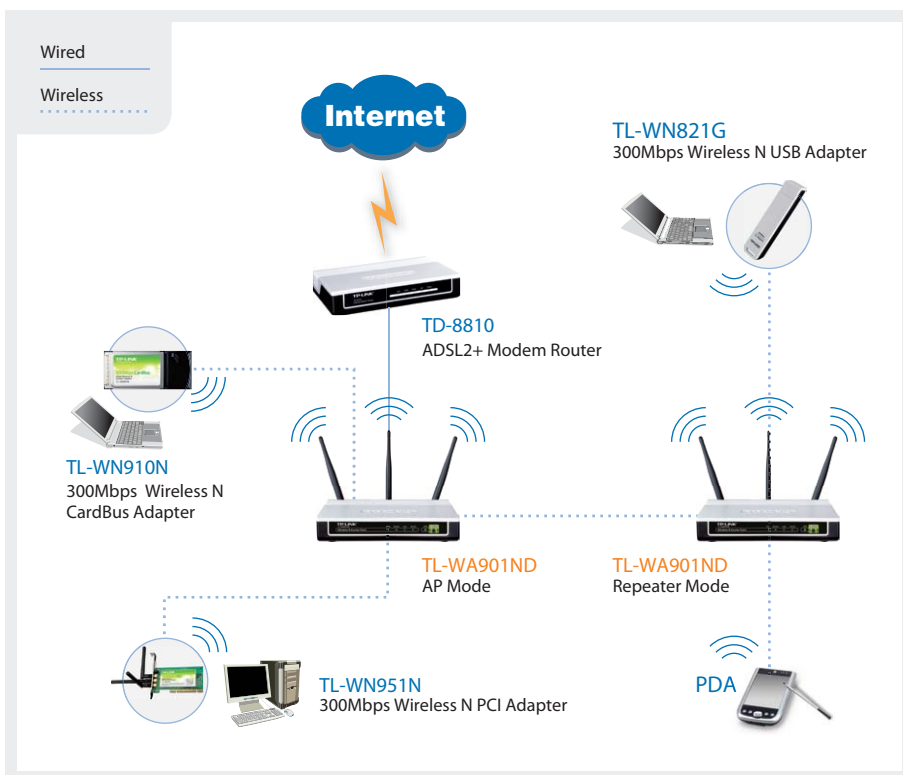
TP-LINK's Wireless N Access Points TL-WA901ND are designed to establish or expand a scalable high-speed wireless N network to connect multiple Ethernet enabled devices such as game consoles, Digital Media Adapters, Printers, or Network Attached Storage devices to an existing wireless network. They provide incredibly high wireless performance----15x the speed and 5x the range of wireless G, guarantying multiple users more freedom to enjoy a great wireless Internet experience in the home, office, cafe or even a hotel or airport.



## Specifications:

Standards	IEEE 802.11n, IEEE 802.11g, IEEE 802.11b
Interface	One Ethernet Port(RJ45) Supporting Passive PoE
Wireless Signal Rates With Automatic Fallback	11n: Up to 300Mbps(dynamic) 11g: Up to 54Mbps(dynamic) 11b: Up to 11Mbps(dynamic)
Frequency Range	2.4-2.4835GHz
Wireless Transmit Power	20dBm(Max)
Antenna	4dBi detachable Omni directional antenna*3
Modulation Technology	IEEE 802.11b: DQPSK, DBPSK, DSSS, and CCK IEEE 802.11g: BPSK, QPSK, 16QAM, 64QAM, OFDM
Receiver Sensitivity	270M: -68dBm@10% PER 130M: -68dBm@10% PER 11M: -85dBm@8% PER 6M: -88dBm@10% PER 1M: -90dBm@8% PER 256K: -105dBm@8% PER
Power Supply Unit	Input: localized to country of sale Output: 12VDC / 1A Switching PSU
Operating temperature	0°C~40°C (32°F~104°F)
Storage temperature	-40°C~70°C (-40°F~158°F)
Relative humidity	10% ~ 90%, non condensation
Storage Humidity	5%~95% non-condensing
Dimensions	6.9*4.7*1.1 in.(174*120*28.8mm)

## Diagram:



## Features:

- Wireless N speed up to 300Mbps makes it ideal for high bandwidth consuming or interruption sensitive applications like video streaming, online gaming and VoIP
- MIMO™ technology provides robust high-bandwidth wireless Tx/Rx capability at further range
- CCA™ improves wireless performance while automatically avoiding channel conflict
- Easily setup a WPA encrypted secure connection at a push of the QSS button
- Supports Wi-Fi Multimedia (WMM) assures the quality of VoIP and multimedia streaming
- Supports multiple operating modes (Access Point, Client, Universal/WDS Repeater, Point to Point, Point to Multi-point)
- Supports up to 30 meters of Power over Ethernet capability for flexible performance
- Up to 4 SSIDs and VLAN support, it allows networks administrator to segregate different services or applications to different designated users
- WPA/WPA2 encryptions provide your network with active defense against security threats
- Fully compatible with 802.11b/g products
- Detachable antenna allows for stronger antenna upgrades

## Package:

- 300Mbps Wireless N Access Point  
TL-WA901ND
- Power Injector
- RJ-45 Ethernet Cable
- Quick Installation Guide
- Power Adapter
- Resource CD

## Related Products:

- ADSL2+ Modem Router  
TD-8810
- Wireless N USB Adapter  
TL-WN821N
- Wireless N CardBus Adapter  
TL-WN910N

Specifications are subject to change without notice. TP-LINK is a registered trademark of TP-LINK Technologies Co., Ltd. Other brands and product names are trademarks or registered trademarks of their respective holders. No part of the specifications may be reproduced in any form or by any means or used to make any derivative such as translation, transformation, or adaptation without permission from TP-LINK Technologies Co., Ltd.