

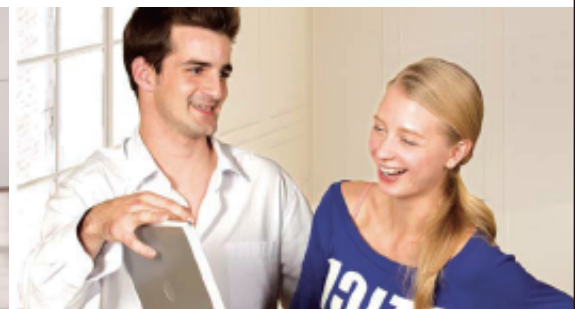
## 85Mbps Powerline Ethernet Adapter Starter Kit TL-PA101



Use existing electrical wires,  
no new wires and drilling required

No configuration required,  
simply plug and play

Built in QoS assures the performance of  
VoIP/IPTV streaming and on-line gaming



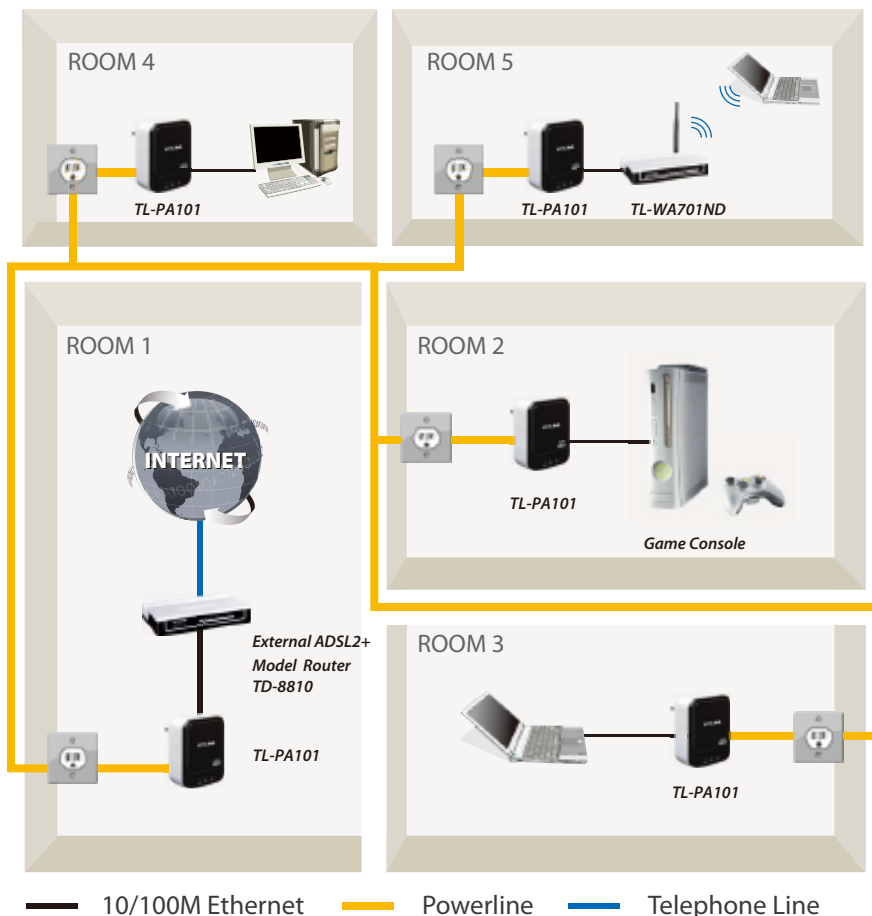
### Description:

Establishing a powerline network requires at least two PLC adapters for the first time, the TP-LINK Powerline Ethernet Adapter Starter Kit is good for initially setup which including two same adapters -TL-PA101. The TP-LINK 85Mbps Powerline Ethernet Adapter TL-PA101 turns your existing power line into network cable, no new wires, no drilling, no hassle, just plug it into your power socket and enjoy the network throughout the house, no matter it is several walls apart or even across floors where previous wireless technology are not good at. Compliant with the Homeplug Turbo standard, the TL-PA101 can share the network at a speed of up to 85Mbps, together with built-in QoS which gives priority to different applications such as data, audio and video, making the TL-PA101 a good choice for your high speed shared in-home network.

## Specifications:

Standards	HomePlug Turbo 85Mbps, IEEE802.3, IEEE802.3u
Modulation Technology	OFDM
Protocol Support	TCP/IP
Network Operating System Support	Windows 2000/2003/XP/Vista Build-in QoS Feature
Advanced Features	Intelligent Channel Adaptation Support 56-bit DES Encryption
Interface	1 10/100Mbps Ethernet Port
LEDs	PWR, PLC, ETH
Range	200 meters in house
Certifications	CE, RoHS compliant
Dimensions (LxWxH)	3.6x2.8x1.7 in.(92x70x44 mm)
Weight	125 grams
Environment	Operating Temperature: 0~ 60°C Storage Temperature: -40~ 80°C Operating Humidity: 10%~ 90% non-condensing Storage Humidity: 5 %~ 90% non-condensing
Power Consumption	< 4 W

## Diagram:



## Features:

- High speed data transfer rate up to 85Mbps
- Easy Plug-N-Play operation, use existing electrical wiring
- Works with AC input of 100V~240V
- Energy consumption is reduced by up to 30% in standby mode
- Intelligent channel adaptation maximizes throughput under harsh channel conditions
- Built-in QoS, prioritize the data, enabling smooth video streaming and lag-free gaming
- 56-bit DES encryption to secure powerline communications
- Up to 200 meters range over the household power circuit for better performance through walls or across floors
- User-friendly software for PC (Windows XP/2000/2003/Vista)
- Backward compatible with HomePlug 1.0
- Twin Pack design good for establishing a powerline network initially

## Package:

- 2\* 85Mbps Powerline Ethernet Adapter TL-PA101
- Quick Installation Guide
- Ethernet Cable
- Resource CD, including:
  - . TL-PA101 Powerline Ethernet Adapter Utility
  - . User Guide
  - . Other relevant contents

## Related Products:

- 5-Port Unmanaged 10/100M Desktop Switch TL-SF1005D
- 4-Port ADSL2+ Modem Router TD-8840T
- Wireless Lite N Access Point TL-WA701ND
- Wireless Lite N USB Adapter TL-WN721N

Specifications are subject to change without notice. is a registered trademark of TP-LINK Technologies Co., Ltd. Other brands and product names are trademarks or registered trademarks of their respective holders. No part of the specifications may be reproduced in any form or by any means or used to make any derivative such as translation, transformation, or adaptation without permission from TP-LINK Technologies Co., Ltd.