

SE-S204S

SAMSUNG DIGIT_{all}
everyone's invited™

BG68-01526A REV.00

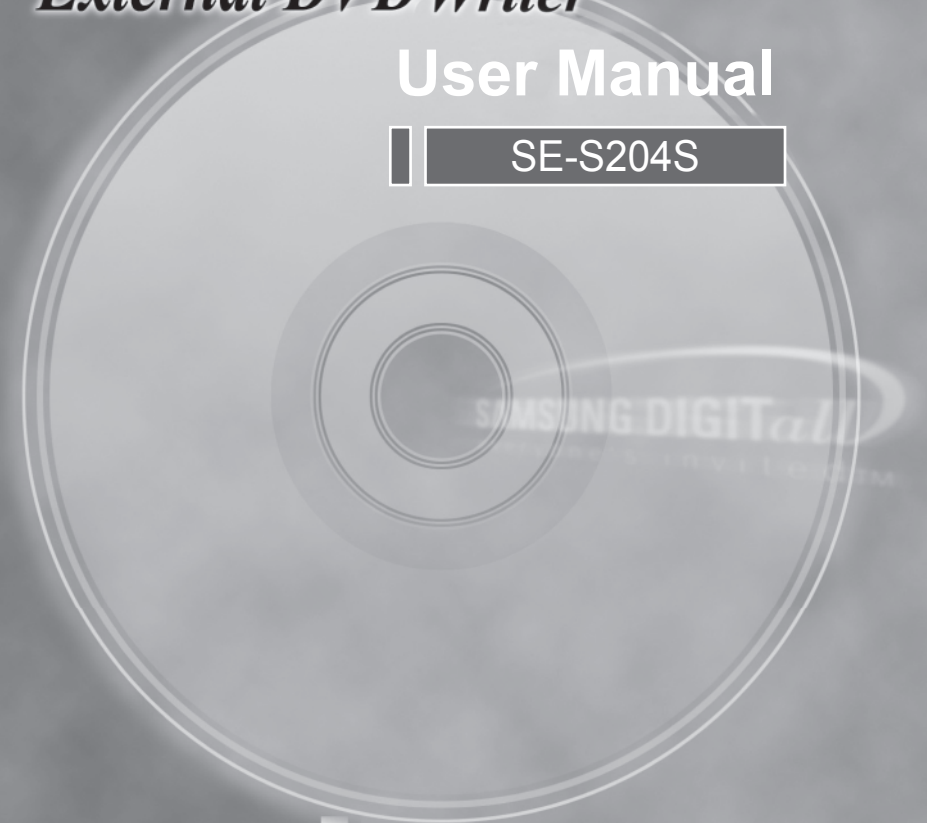
- <http://www.samsung-ODD.com>
- <http://www.samsung.com>

SAMSUNG DIGIT_{all}
everyone's invited™

TruDirect™
External DVD Writer

User Manual

SE-S204S



For the correct use of product, read a user manual carefully.

English	1~30
Deutsch	31~60
Français	61~90
Italiano	91~120
Português	121~150
Español	151~180
Svenska	181~210
Русский	211~240
Polski	241~270
Suomi	271~300
Magyar	301~330
Norsk	331~360
Dansk	361~390
Türkçe	391~420
Nederlands	421~450
العربية	451~480
简体中文	481~510



Super-Writemaster SE-S204S

User Manual - ENGLISH

FCC Compliance

This equipment has been tested and found to comply with the limits for a Class B digital device, pursuant to Part 15 of the FCC rules.

These limits are designed to provide reasonable protection against harmful interference in a residential installation.

This equipment generates, uses, and can radiate radio frequency energy and, if not installed and used in accordance with the instructions, may cause harmful interference to radio communications. However, there is no guarantee that interference will not occur in a particular installation. If this equipment does cause harmful interference to radio or television reception, which can be deter-mined by turning the equipment off and on, the user is encouraged to try to correct the interference by one or more of the following measures:

- Re-orient or relocate the receiving antenna.
- Increase the separation between the equipment and receiver.
- Connect the equipment into an outlet on a circuit different from that to which the receiver is connected.
- Consult the dealer or an experienced radio/TV technician for help.

CAUTION

Change or modifications not expressly approved by the manufacturer responsible for compliance could void the user 's authority to operate the equipment.

LASER STANDARD

IEC 60825-1 :1993 +A1 :1997 +A2 :2001

WEEE

Correct Disposal of This Product (Waste Electrical &Electronic Equipment)

(Applicable in the European Union and other European countries with separate collection systems)



This marking shown on the product or its literature, indicates that it should not be disposed with other household wastes at the end of its working life. To prevent possible harm to the environment or human health from uncontrolled waste disposal, please separate this from other types of wastes and recycle it responsibly to promote the sustainable reuse of material resources.

Household users should contact either the retailer where they purchased this product, or their local government office, for details of where and how they can take this item for environmentally safe recycling.

Business users should contact their supplier and check the terms and conditions of the purchase contract. This product should not be mixed with other commercial wastes for disposal.



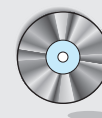
• Samsung Eco-mark

The Samsung's own Eco mark helps consumers to easily understand that Samsung develops eco-friendly products. This mark represents Samsung's continuous effort to develop eco-friendly products.

• RoHS

(Restriction of the use of certain hazardous substances in electrical and electronic equipment)
The RoHS, the environment regulation announced by European Union, restricts the use of lead, mercury, cadmium, hexavalent chromium, PBB, and PBDE in products put on the market in The European Union after July 1, 2006.

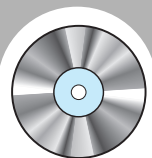
- <http://www.samsung-ODD.com>
- <http://www.samsung.com>



Contents

1. User manual

Safety Precautions	3
Introduction	5
Installation method	6
How to connect and remove a drive.....	7
How to connect a device for the use of TruDirect program.....	8
How to operate/Disc care and keeping method	10
Easy checks	11
Technical specifications	13
Before the installation of TruDirect	14
1. Installing the TruDirect	16
2. Starting the TruDirect.....	18
3. Using the Express mode of TruDirect	20
4. Using the manual mode of TruDirect	24
5. Easy checks for TruDirect.....	29

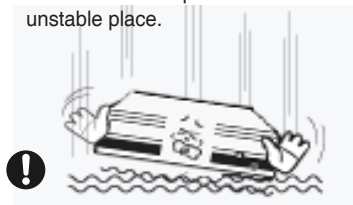


Safety Precautions

※ These contents are for the safety of a user and prevention of property damage.
Read the following contents carefully and use a product correctly.

● Installation

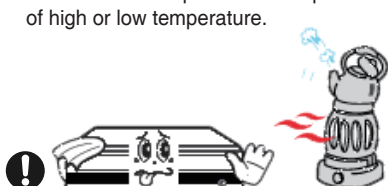
- Do not install the product at the unstable place.



- Do not install the product directly to the sun.



- Do not install the product at the place of high or low temperature.



- Do not install the product at the moisture place.



● Operation

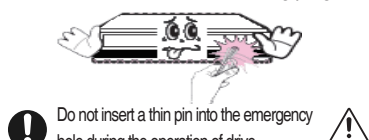
- Do not impact on the product during the operation.



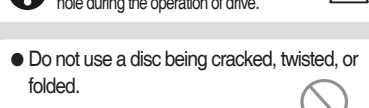
- Do not drop the product.



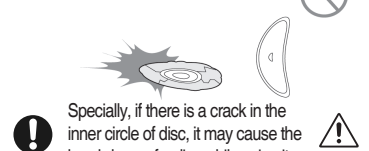
Do not move the product or open the disc tray unreasonably while operating. Use the Open/Close button after the exit of acting program.



- Do not insert a thin pin into the emergency hole during the operation of drive.



- Do not use a disc being cracked, twisted, or folded.



Specially, if there is a crack in the inner circle of disc, it may cause the breakdown of a disc while using it.

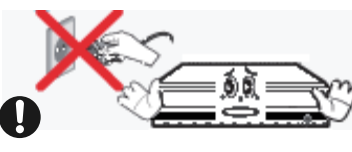
Warning/Caution



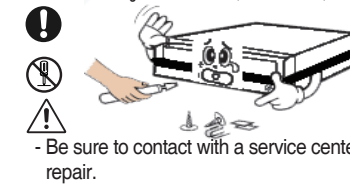
Warning : This is indicated when there is a possibility of death or fatal injury.

Caution : This is indicated when there is a possibility of property damage.

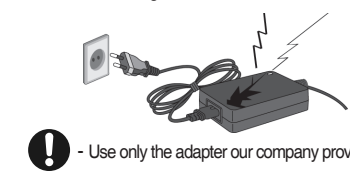
- Do not turn the power off or pull out the power cord while the operation of drive.



- Do not disassemble, repair, remodel the product at your disposition.
- There are dangers of breakdown, electric shock, and fire.



- Do not impact on the AC/DC adapter or disassemble it.
- There is a danger of breakdown or electric shock.

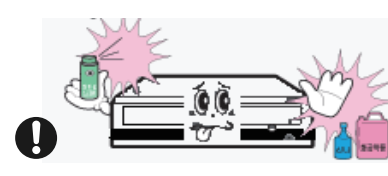


● Others

- Be careful not to insert a foreign material like a food or water into the inside of product.



- Do not drop alcohol or benzene due to avoid a danger of fire.

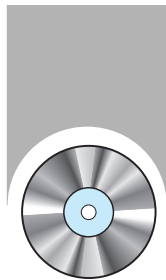


Marks

- ! It indicates the application to be observed absolutely.
- ⚡ It indicates the application to be observed absolutely.

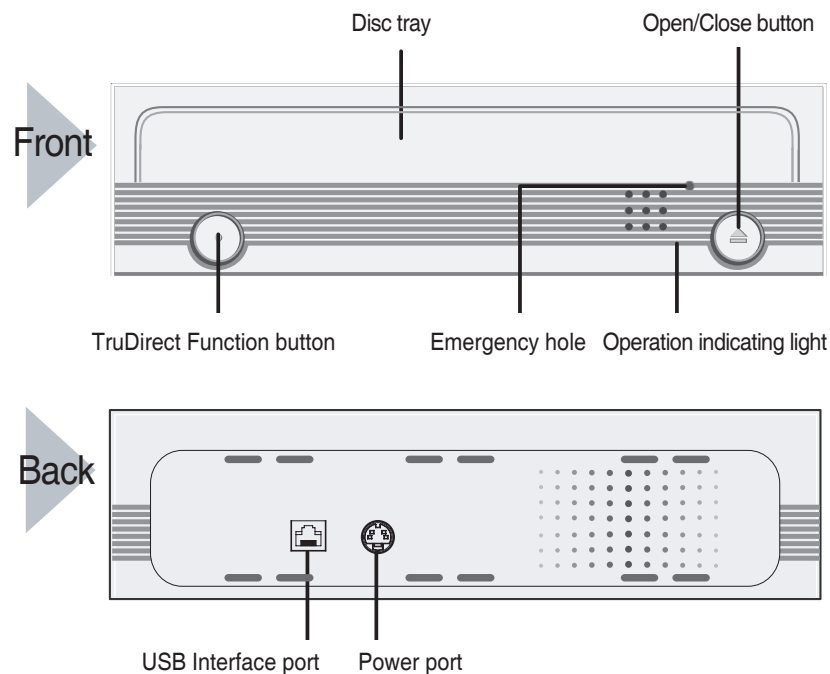
※ If this product is changed or amended without the approval of a responsible person, the authority of a user for product use may be cancelled.

1. Before use, always check if there is a crack on the disc. If there is a crack(specially, on the side of center hole), make a copy for use immediately. If you use a cracked disc, the crack is extended and it gives a fatal damage to the disc.
2. Do not use a bad disc(illegal, scratched, damaged...).



Introduction

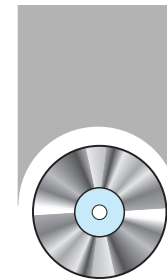
- ※ This product design can be changed according to the feature of product.
- ※ Because Record/ Play software CD is impossible to provide additionally when it is lost or damaged, keep it carefully not to lose.



Accessories

USB cable, Product table, Software CD, Power adapter & Power cord,
User manual, Drive installation manual

- The accessory type can be different and some accessories are not provided according to the product model.
- If you want a refund, you have to return the product and its accessories all.



Installation method

System required

OS : Microsoft® Windows® 2000/XP/(Service pack 1 over)/Vista
CPU : Pentium® IV 4 2.8GHz over IBM PC or compatible PC
RAM : 512 MB or above
HDD : 10GB or above
Interface : USB 2.0 Interface connector

Firmware upgrade method by the flash memory

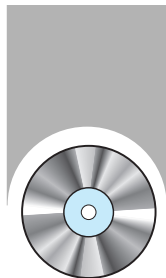
- ※ If a problem is occurred by firmware upgrade, we don't take the responsibility for it. Contact to the service center for a service.
- ▶ It is possible to upgrade the function of this product by the download of firmware file at the homepage of Samsung. Refer to the homepage of Samsung for more information.

Address : www.samsung-ODD.com [Firmware > Firmware download]

Keep the power of a connected ODD drive turning on until the upgrade is finished.
- ▶ You can find out the model name(dealer) of ODD product and confirm its firmware version.
Address : <http://www.samsung-ODD.com> [Firmware → Firmware version check]

You can confirm the easy use way of software at our customer support site.

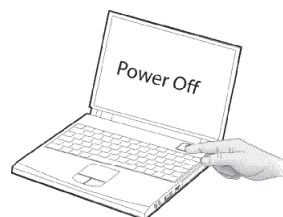
Address : www.samsung-ODD.com
[Customer support > Download > User manual (PDF) > Easy use way of software]



How to connect and remove a drive

How to connect the External DVD Writer

- 1 Switch off the PC power.

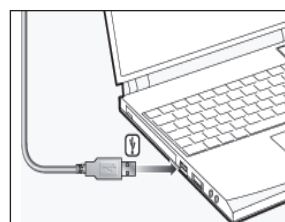


- 2 Connect a cable and switch on the drive power.

- Connect a USB cable with the USB port of drive.
- Connect an AC power cord with an AC/DC adapter.
- After connecting an AC/DC adapter cord with the power port of drive, connect the power plug of AC/DC adapter with an AC power socket.
- Connect it to the drive port.



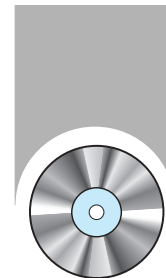
- 3 Connect the other end of USB cable with the USB port of PC.



Checking the USB 2.0

If a PC which is not supported USB 2.0 uses this drive in the speed of USB2.0, it should install USB.20 adapter card. If not, this drive operates normally by USB 1.1 connection but it is limited in the speed of USB 1.1. You can check if USB 2.0 adapter card is recognized in the PC being installed USB 2.0 adapter card. Windows 2000/XP/Vista

Select a property by clicking the right button of mouse attribute in my computer, and then click to confirm the hardware tap and device manager in order. Contact with a card manufacturer or a manufacturer if there is a yellow exclamation mark at the side of general purpose series bus controller.



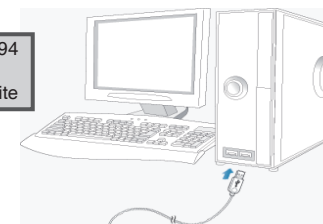
How to connect a device for the use of TruDirect program

- 1 Connect Video/Audio device to the computer before the use of TruDirect program.

Camcorder, Digital Camera, Webcam...



IEEE 1394
USB
Composite



- 2 Press the TruDirect function button at the front of product(In the high speed mode), or click the TruDirect shortcuts at the window background.



- 3 Make a DVD from the live video, photo file, and video file.



- 4 Play a DVD which is made by TruDirect with a DVD player or a PC.



How to remove the USB cable

This drive adapts the Play&Play function for Windows, and it is possible to use by the following method for the use of USB converter cable.


- 1 Exit all of software.
- 2 Click the icon of right bottom of screen as a below picture.

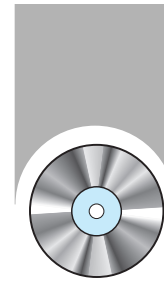


- 3 The following message is appeared if you click [Remove a drive].
(The message which is appeared by clicking the icon could be different according to the setting of computer.)



- 4 Remove the USB cable.

 **Caution:** Do not remove a converter cable when a drive is operating or a computer is booting.

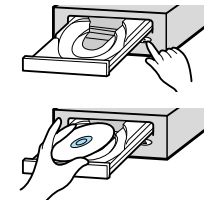


How to operate/Disc care and keeping method

The following instructions are for the user safety and the prevention of property damage.
Read instructions carefully and use a product correctly.

How to operate

- 1 Boot a computer by pressing the power button.
- 2 After booting, open the disc tray by pressing the Open/Close button.
- 3 Insert a disc(CD/DVD), and close the disc tray by pressing the Open/Close button.
 - The operation indicating light is turned on.
- 4 Play a disc(CD/DVD).

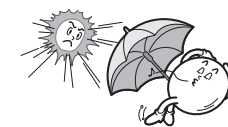


To play a DVD title/Video CD title

- Start to play after installing DVD software mpeg program which is provided with the accessories on the PC.
- ※ If a drive is mounted vertically, it is impossible to use 8cm of mini disc because it is not fixed.

How to store a disc

- Do not store it directly to the sun.
- Store it vertically at the even place which is well ventilated.
- Do not scribble or put a label on a disc.
- Do not impact to a disc excessively or drop it.

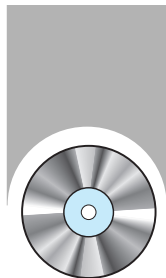


How to clear a disc

- Hold the edge of disc instead of touching the surface of disc.
- Clear a disc lightly from the center of disc to the outer side with the soft cloth.



※ If you touch the surface of disc or a foreign material or a dust is covered on the disc, it could not be operated well.



Easy checks

PC does not recognize a drive.

- Check if the USB 2.0 converter cable is connected correctly.
- Check if the power switch of back of drive is turned on.

A video file is not played.

- Check it after installing the newest codec program.
- Use the newest codec file to watch the movie file.
Select the codec program that supports the related compressing type and install it.

A disc is not recognized and a speed is slow.

- Check a DISC condition and use it after cleaning.

A disc tray is not opened.

- Check the connection of a power cord or power cable.
- If it is not opened at the state of power on, reboot the PC and open it by pressing the Open/Close button. But still it is not opened, turn the power off and open it pushing by inserting a thin pin(clip) into the emergency hole.

A screen is cut and a speed is slow when playing a video with S/W MPEG.

- Reduce a play screen size.
- Check the resolution of display and correct it to the proper resolution in the control panel of windows.

The no disc message is appeared in spite of inserting a disc.

- If you press the play button so quickly after inserting a disc, a disc could not be recognized. Open and close the disc tray, and try again.
- Use a disc after cleaning.

The function of pulling out the disc being formatted with InCD is included.

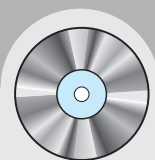
- Click the right mouse on the tray icon(It is at the right of taskbar in the bottom of monitor.) and select "Take Out" to take out the CD.
- Select a drive that has a disc in the windows explorer and click the right mouse, and select "Take Out" to take out the CD.

The CD is not created when recording NERO and it is recorded to a image file.

- It is a symptom that SE-S204S is not selected but "Image Recorder" is selected when selecting a record. Select a recorder selection in the NERO top menu and record by selecting SE-S204S in the recorder selection window.
- When installing the recording software, pay attention that Image Recorder is selected in the case that the software is installed first and ROM drive is installed.

A recorder cannot recognize a disc.

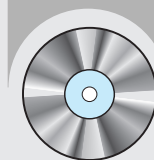
- Upgrade the firmware to the newest at www.samsung-ODD.com and reinstall the recording software provided to bundle.



Technical specifications

Category		SE-S204S External DVD Writer		
Disc	Usable Discs	DVD : DVD-R, DVD-RW, DVD+R, DVD+RW, DVD-ROM, DVD-Video, DVD+R(DUAL), DVD-R(DUAL), LightScribe DVD±R, DVD-RAM CD : CD-ROM, CD-R, CD-RW, CD-DA, CD+E(G), CD-MIDI, CD-TEXT, CD-ROM XA, Mixed Mode CD, CD-I, CD-I Bridge (Photo-CD, Video-CD), Multisession CD (Photo-CD, CD-Extra, Portofolio), LightScribe CD-R.		
	Disc Diameter	4.72 Inch or 3.15 Inch(120mm or 80mm)		
Interface Support	Interface Port	USB 2.0		
Access Time (Random)	CD-ROM	110ms(Random)		
	DVD-ROM	130ms(Random)		
Disc Labeling Time	Media Type	Setting	Titles only	Titles entire label area(including GRAPHICS)
	CD Media	Best	Less than 3:30min	Less than 28:00min
	DVD Media	Best	Less than 3:30min	Less than 30:00min
Data Transfer Speed(Max)	Media Type	Write		Read
	DVD+R	CAV 20X		CAV 16X
	DVD+RW	ZCLV 8X		CAV 12X
	DVD+R Dual	ZCLV 16X		CAV 12X
	DVD-R Dual	ZCLV 12X		CAV 12X
	DVD-R	CAV 20X		CAV 16X
	DVD-RW	CLV 6X		CAV 12X
	DVD-ROM(single)	-		CAV 16X
	DVD-ROM(Dual)	-		CAV 12X
	DVD-RAM	CAV 12X		CAV 12X
	CD-ROM	-		CAV 48X
	CD-R	CAV 48X		CAV 40X
	US-RW	ZCLV 32X		CAV 40X
	HS-RW	CLV 10X		CAV 40X
	CD-RW	CLV 4X		CAV 40X
Buffer Memory		2MB		
Drive Installation		Horizontal / Vertical		
Operating Environment	Temperature	5°C ~ 40°C (41°F ~ 104°F)		
	Humidity	5 ~ 80% (RH)		
Size (Width × Height × Length)		6.41 X 1.96 X 9.13 Inch(163 X 50 X 232 mm)		
Weight		1,200g		

※ The above specification could be changed without a notice for the improvement of performance.



Before the installation of TruDirect

PC software required

- Windows 2000(Service pack 4), Windows XP(Home, Professional & Professional MCE), Windows Vista(Basic, Business, Premium, Enterprise & Ultimate).
- Microsoft DirectX 9.0 over.

PC hardware required

- CPU : Intel P-4 2.8 GHz over (Windows 2000/XP), Intel Core2Duo 1.8GHz over (Windows Vista)
- Memory : 512 MB over (Windows 2000/XP), 1 GB over (Windows Vista)
- HDD : 60 MB over space for program installation, 9GB below space in maximum for DVD production
- Video Card : Video card compatible with DirectX 9.0 (Windows Vista 128MB over)
- ODD : SAMSUNG TruDirect™ Drive (In case of external type, USB 2.0 Interface)
- AV PORT : IEEE 1394, USB 2.0 and Composite connection

PC Input Source supported

- Video/Audio
PC Interface supported : IEEE 1394, USB2.0, Composite or Video Capture Card.
Devices supported : Camcorder, TV, Set Top Box(STB), VCR, Digital Camera, Webcam
- Photo
PC Interface supported : USB 2.0
Devices supported : Digital Camera, Camcorder, Memory stick (Memory device of great capacity)
- Video/Photo file
Video/Photo File that is made by the user or downloaded from the internet.

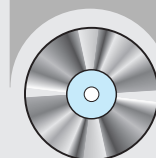
TruDirect is a DVD Recording Program which is based on the Windows OS of Microsoft. So, it can record all of video files which are played in the PC (e.g. Windows Media Player). (The normal play of a video file in the PC means that there is a correct codec for the play of video file. Install the correct Software(CODEC) if it is impossible to play the video file.)

Media format supported

- DVD-R, -R DL, -RW, +R, +R DL, +RW and RAM media. (Including the 8cm disc)

File format supported

1. DVD-Video compatible video
2. DVD-Video compatible photo DVD
3. DVD-Video compatible multimedia file
4. Data file related to the video or photo file



1. Installing the TruDirect

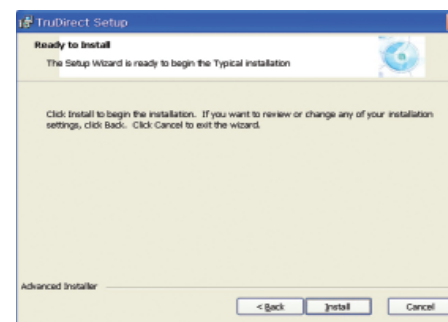
1. Select "Install TruDirect".



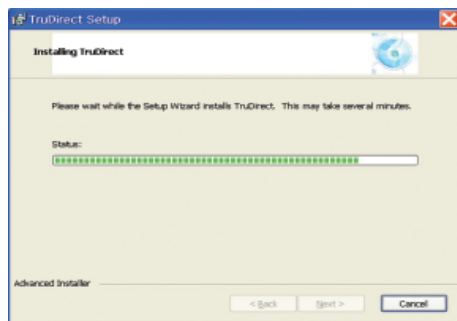
2. If the TruDirect installation wizard is appeared, press [Next] button.



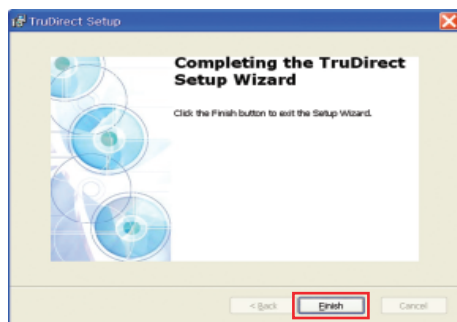
3. If the installation preparation is completed, press [Install] button.



4. The installation of TruDirect is proceeding.



5. If the installation of TruDirect is completed, press [Finish] button to complete the installation.



※ For the installation of TruDirect application, the installation manager judges if a drive is certificated.
If it is a certificated drive, the installation manager continues the installation of TruDirect.
If not, the installation manager indicates an error message and stops the installation.

2. Starting the TruDirect

Start of TruDirect

There are three methods in the start and use of TruDirect.

- Click the TruDirect shortcuts in the windows background or start menu.
- Select Trudirect in the application list of OS search popup window.
- Press the TruDirect function button in the front of drive.

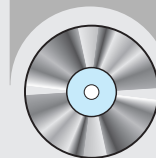
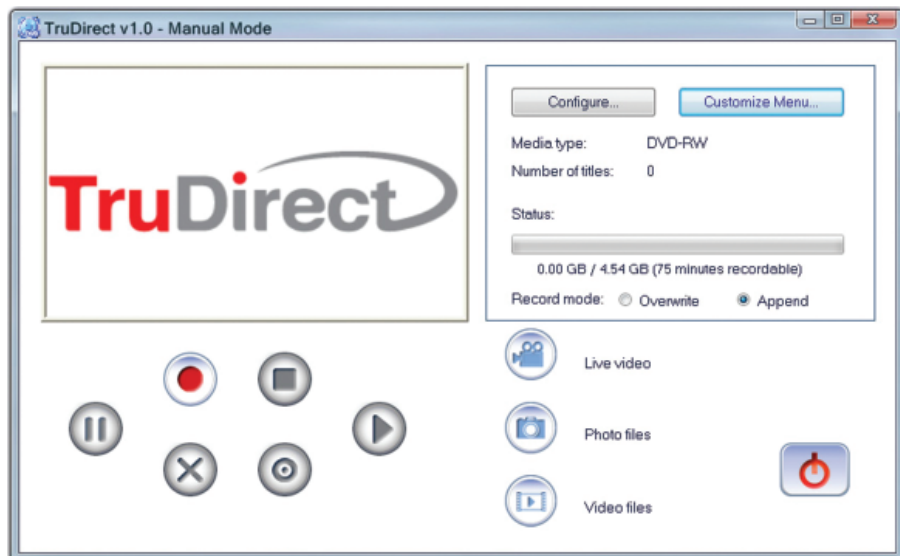
Manual mode and Express mode

A user can operate TruDirect with a manual mode or a Express mode according to the level of intervention that a user wants.

- **Express Mode** : It is possible to make a DVD in a short time by clicking many buttons of popup screen or TruDirect function button of front of drive.



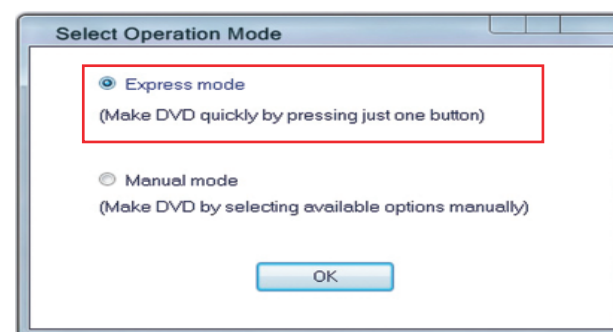
- **Manual Mode** : You can make a DVD by selecting the usable option directly.



3. Using the Express mode of TruDirect

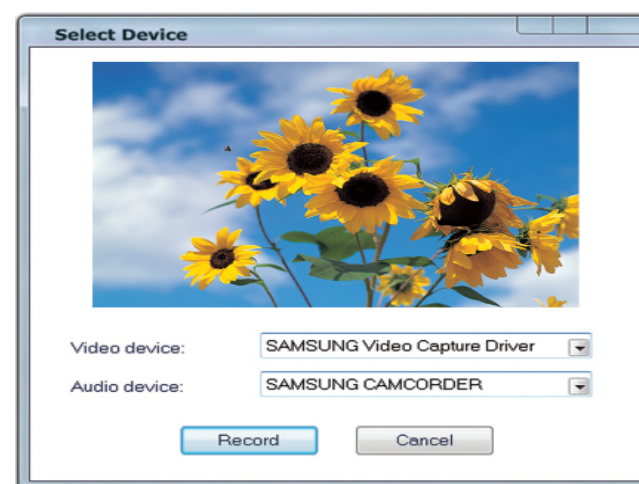
Express mode of TruDirect

Select the Express mode by clicking the TruDirect function button of the front of drive after connecting a support device with a PC. You can also select the high speed mode by clicking the Express mode button in the operation mode selection dialog box.

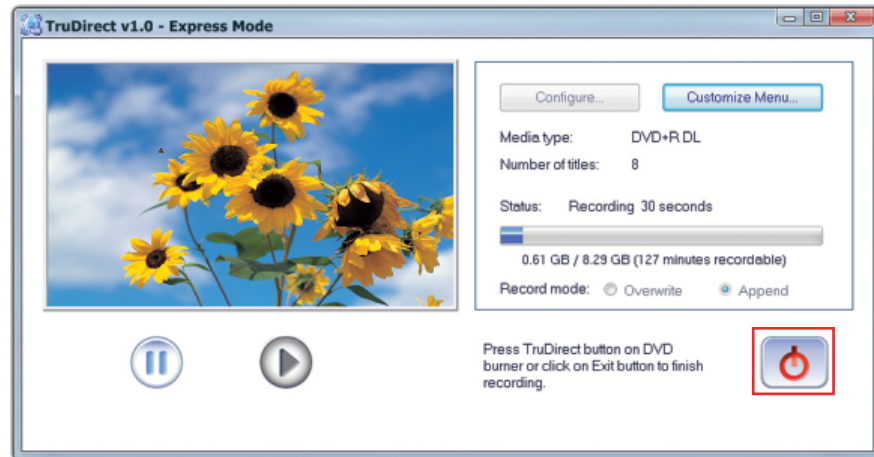


A. Making a DVD from the Live Video(Streaming image- DV camcorder, Web camera, etc.)

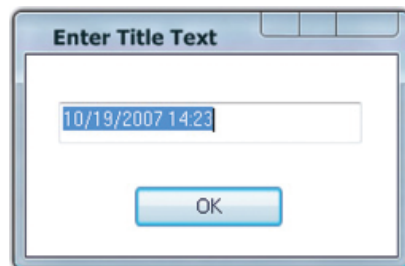
1. If a live video device is detected, the video preview is displayed in the device selection dialog box automatically.



2. If you click the recording button, the recording starts and the video is displayed in the main screen.



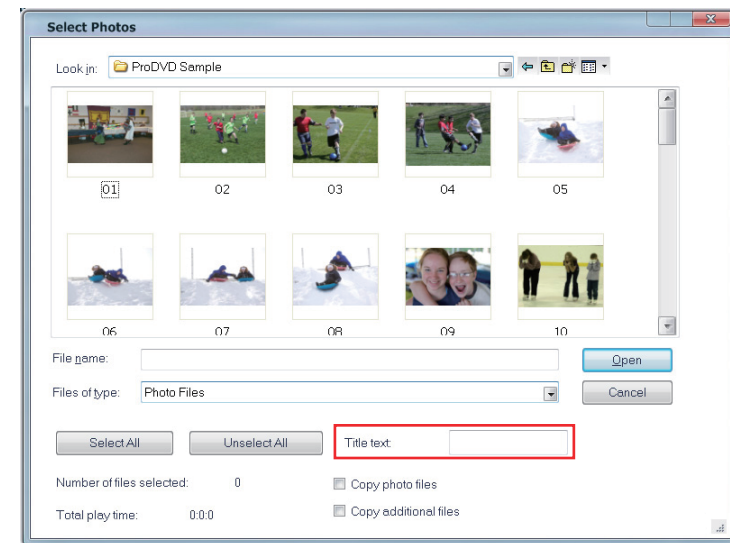
3. Clicking the recording stop displays the title input popup window.



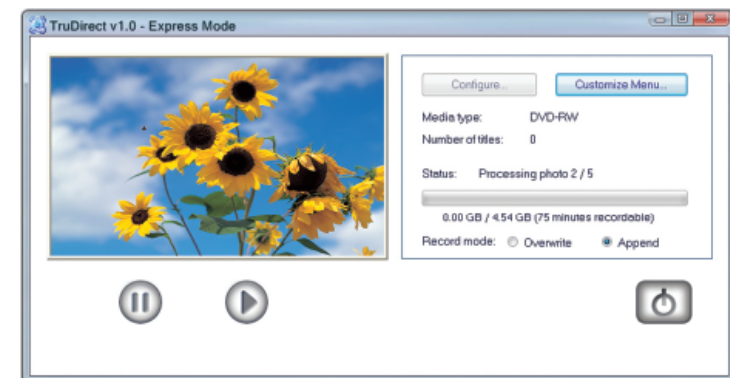
4. Stop and complete the recording by clicking the confirmation after change of text. After completion, TruDirect drive discharges a media.

B. Making a DVD from the photo file

1. If photo files of portable memory device are detected, photo thumbnail preview is executed in the photo selection dialog box.



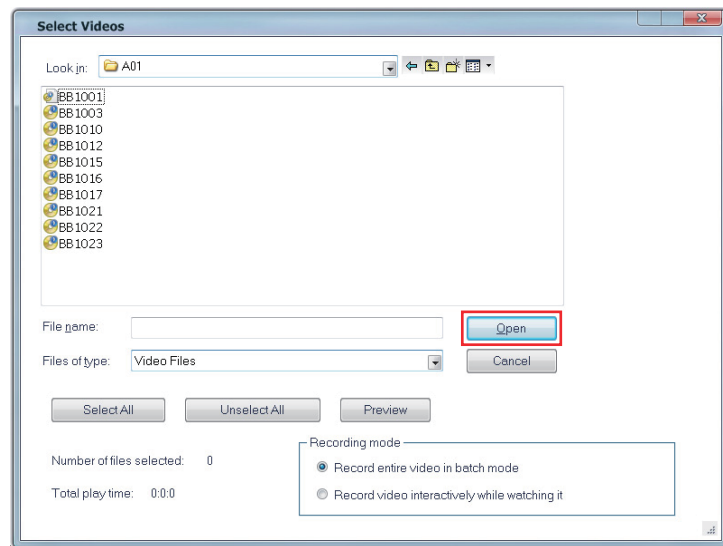
2. Input a title after selecting the picture to record. It is possible to record when photo files are five over.
3. Click the open button to start the recording of TruDirect drive.



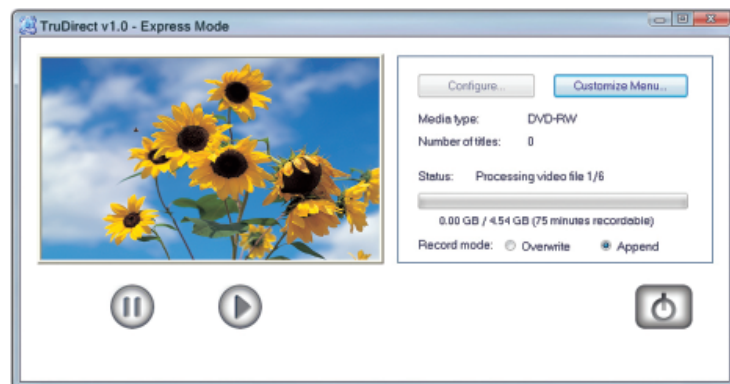
4. After completion of recording, TruDirect drive discharge a media.

C. Making a DVD from the video file

1. If the video file of portable big size storage device like a hard drive camcorder or a digital camera is detected, the video file list is displayed at the video selection dialog box.



2. Select video files to record.
3. Click the open button to play video files automatically in the main screen and a recording starts.



4. After completion of recording, TruDirect drive discharge a media.

4. Using the manual mode of TruDirect

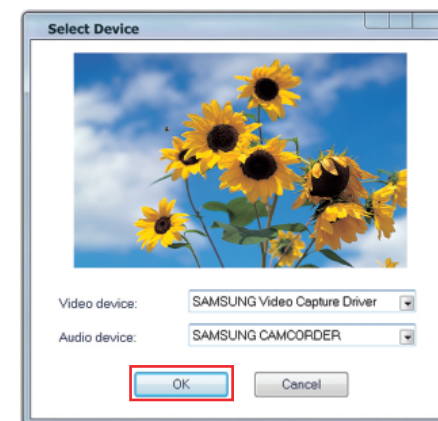
Manual mode of TruDirect

A. Making a DVD from the live video(Streaming image - DV camcorder, Web camera, etc.)

1. The main screen is displayed if TruDirect starts.



2. Connect a video device with a user's PC.
3. Click the live picture of main screen.
4. Check the video and audio device to record, and click the confirmation.



5. Click the start of recording to record a DVD.



6. Clicking the recording stop displays the title input popup window.
Input a title and click the confirmation.

7. Click the recording completion button if the recording completion button is usable and the recording completion is prepared.
After completion of DVD recording, a DVD is discharged automatically.

8. Click the finish to finish the TruDirect.

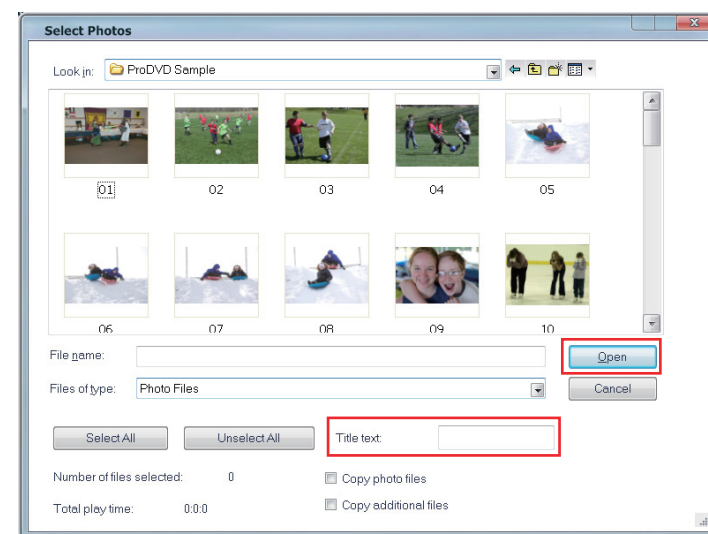
B. Making a DVD from the photo file

1. The main screen is displayed if TruDirect starts.



2. Connect a photo file source with a user's PC. Or select a photo file from the hard drive of PC.

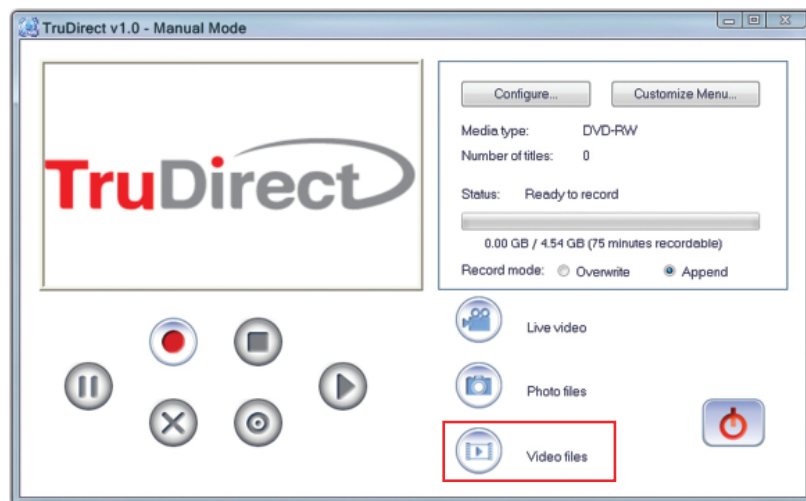
3. Click photo files in the main screen to display the photo selection dialog box.



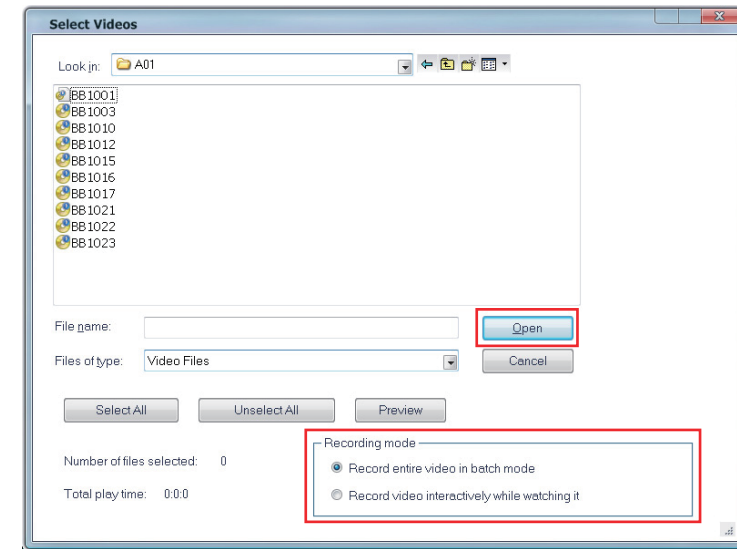
4. Select a picture to record and input the title.
5. Click the open button to start a recording.
6. Click the recording completion button if the recording is completed and a DVD discharge is prepared.
7. Click the finish to finish the TruDirect.

C. Making a DVD from the video file

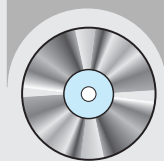
1. The main screen is displayed if TruDirect starts.



2. Connect a video file source with a user's PC to display the selection dialog box. Or select a video file from the hard drive of PC.



3. Select all video recording in the video selection dialog without watching or select a video recording interactively with watching.
4. Select video files to record.
5. Click the open button to record by DVD burner. When a video is recorded interactively in the state of watching, a video is played at the manual mode dialog box and DVD recording starts by clicking the start of recording.
6. Clicking the recording stop displays the title input popup window. Input a title and click the confirmation.
7. Click the recording completion button if the recording is completed and a DVD discharge is prepared.
8. Click the finish to finish the TruDirect.



5. Easy checks for TruDirect

1. TruDirect™ Software is not operated in the DVD Writer.

TruDirect™ Software operates by communicating with a TruDirect™ drive of Samsung.

Check if a TruDirect™ drive is connected correctly.

2. Is it possible to record a video file that a computer cannot play with TruDirect™?

It is impossible to record a video file that a computer cannot play. Confirm the normal play after installing the correct codec or decoder and then record with TruDirect™.

3. It is impossible to record with TruDirect™ in spite that a video file is played with a PC normally.

Some codec is operated in the special software. In this case, it could not be supported by TruDirect™. Recommend the use of certified and stable codec.

Also, some united codec could make the all system unstable.

4. Why a part of video files supports 'Video recording with watching' mode?

And, what kinds of video file show the present screen during the 'recording the all videos'?

In TruDirect™ 1.0, only the standard MPEG-2 video file supports 'Video recording with watching' mode. And it works quickly without showing the present screen in the case of 'recording the all videos'.

5. How to use the DV camcorder (Tape type) in TruDirect™?

To record pictures of DV camcorder, the camcorder should be connected with the IEEE 1394 (FireWire) port of PC. Execute TruDirect™ after connecting the camcorder with a PC. (If there is no IEEE 1394 port in the PC, internal/external DV capture board is needed.)

Some camcorders support the USB connection and IEEE 1394 connection at the same time.

6. How to use the USB connection of camcorder, web camera, and digital camera in?

To record video/photo files with TruDirect™ from the above devices, connect a device with a USB port of PC(1.1 or 2.0 : USB 2.0 connection provides the best data transmission rate.). Some devices need a correct USB driver. In this case, install the provided driver with a device or the newest version of driver at the homepage of manufacturer.

*** If a device is not recognized in the Microsoft Windows OS, it is impossible to use in TruDirect™. If a device is not recognized in the OS, install the correct device driver.

7. There is no sound in DVD made with TruDirect™ by connecting the external device.

Check if the video/audio device is selected correctly at the selection window when connecting the device. Otherwise check the original source of audio is saved correctly.

8. Photo slide show is not worked normally.

There is a case that some software that DVD timer logic is not realized dose not work automatically the photo slide show made by TruDirect™. In this case, press button or click to continue to the next picture.

9. 'Write error' occurs when recording with TruDirect™.

Check if a disc is scratched, broken, or dirtied.

An error could occur if another work is processed when recording a DVD.

10. A DVD that is made with TruDirect™ is not played in my DVD player.

Check if your DVD player supports the DVD media type(±R, ±RW, ±R Dual Layer, RAM).