

# RCMHE-9375 3.3" SBC C51, RS-232, Opto-Isolated, Dual-Power, 4 Channels SPDT Startup Manual

## Packing List

Before you begin installing your module, please make sure that the following materials have been shipped:

- 1 RCMHE-9375 SBC
- 1 Startup manual
- 1 Power supply
- 1 Serial port cable (optional)
- 1 RS-232/RS-485 converter (optional)

If any of these items are missing or damaged, contact your distributor or sales representative immediately.

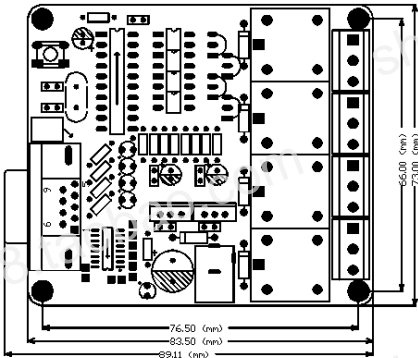
## Specifications

### Standard SBC Functions

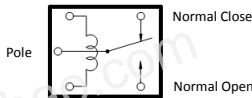
- **MCU:** W79E2051 or STC11F01E, high speed
- **Relay:** Four channels HSIN DA SPDT relay
- **Serial port:** One serial RS-232 port in one DB-9 connector. RS-485 can be configured with an optional 232/485 converter
- **Opto-isolator:** Provide isolation in excess of 3kV, protect the controlling circuitry
- **Power supply:** One +9V portable switching power supply
- **Border size:** 83.5mm\*73mm
- **Mounting dimensions:** 76.5mm\*66mm
- **Indicator:** Four indicator for relays and one for power supply
- **Load connector:** 5.08mm 3 pin connectors

### Electrical connection

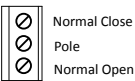
- 12A 125V AC (50/60 Hz)
- 7A 250V AC (50/60 Hz)
- 7A 30V DC



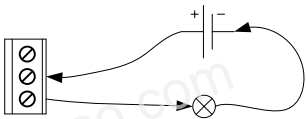
1. Board dimensions



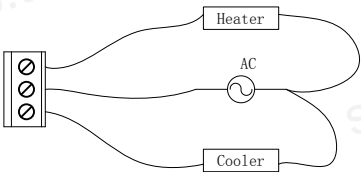
2. Relay wiring diagram (top view)



3. Terminal connection



4. Typical usage (direct current)



5. Typical usage (alternating current)

For more information on this and other SUME products, please visit our shop:  
<http://shop62446138.taobao.com/>  
For technical support and service, please contact  
Taobao Wangwang ID:  
**asdf1776**  
This manual is for the RCMHE-9375 v1.0 .  
Rev. 2011/2/24