

4. Adjusting the flange focal length

When you use the PS-IMS-F3 adapter on your Sony PMW-F3 it might be necessary to adjust the flange focal length. Therefore refer the subitem „Adjusting the flange focal length“ of the chapter „Attaching a Lens“ in your Sony PMW-F3 user manual.

5. Manufacturer Information

The manufacturer of this product is:

P+S Technik GmbH
Siemensstraße 12
85521 Ottobrunn / MunichGermany.

Phone: +49 89 45 09 82 30

Please find worldwide authorised representations and dealers on our homepage www.pstechnik.de or send an e-mail to info@pstechnik.de for contact details.

Concerning any service and warranty requests, please contact your local representation or P+S Technik GmbH directly.



User Manual

for PS-IMS-F3 adapter for Sony PMW-F3

ENGLISH

Before operating this product, please read the instruction carefully and save this manual for future use. Subject to technical change without any prior notice.

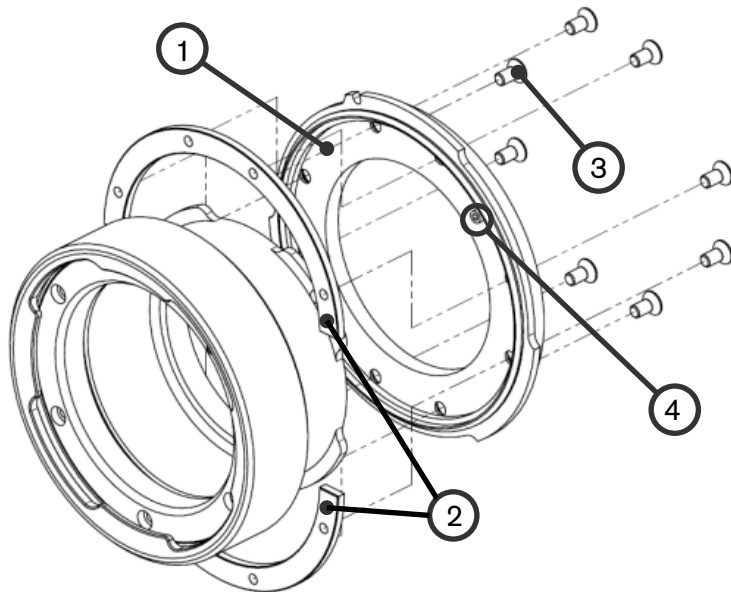
1. About

The PS-IMS-F3 adapter is designed to make the P+S TECHNIK IMS (Intercangeable Mount System) useable for the Sony F3 mount.

The PS-IMS-F3 adapter is designed to be assembled with an IMS Mount once and to be left there. For using different IMS Mounts on the Sony F3 Mount P+S TECHNIK recommends to equip every single IMS Mount with a seperate PS-IMS-F3 adapter.

2. Delivery Content

Pos.No.	Art.No.	Description	Amount
1	#27560	Flange Sony FZ-IMS	1
2	#27559	Clamping plate	2
3	#21838	Screws M3 x 6 A2	8
4	#10528	Fixation screw (pin) already mounted	2



3. Assembling Instructions

Necessary tools: The only tool you need is an Allen Key 2,0 (metric)

1) Put the IMS Mount on the Flange.
Verify the pin fits into the IMS Mount



2) Put one Clamping Plate into the Flange



3) Hold Clamping Plate, IMS Mount and Flange together and turn them around



4) Move the Clamping Plate in the Flange until the holes in the Flange are aligned with the holes in the Clamping Plate



5) Put one screw into a hole and tighten it lightly to fix IMS Mount, Flange and Clamping Plate



6) Repeat Steps 2 to 6 to assemble the second Clamping Plate

7) Add the remaining 6 screws and tighten them crosswise