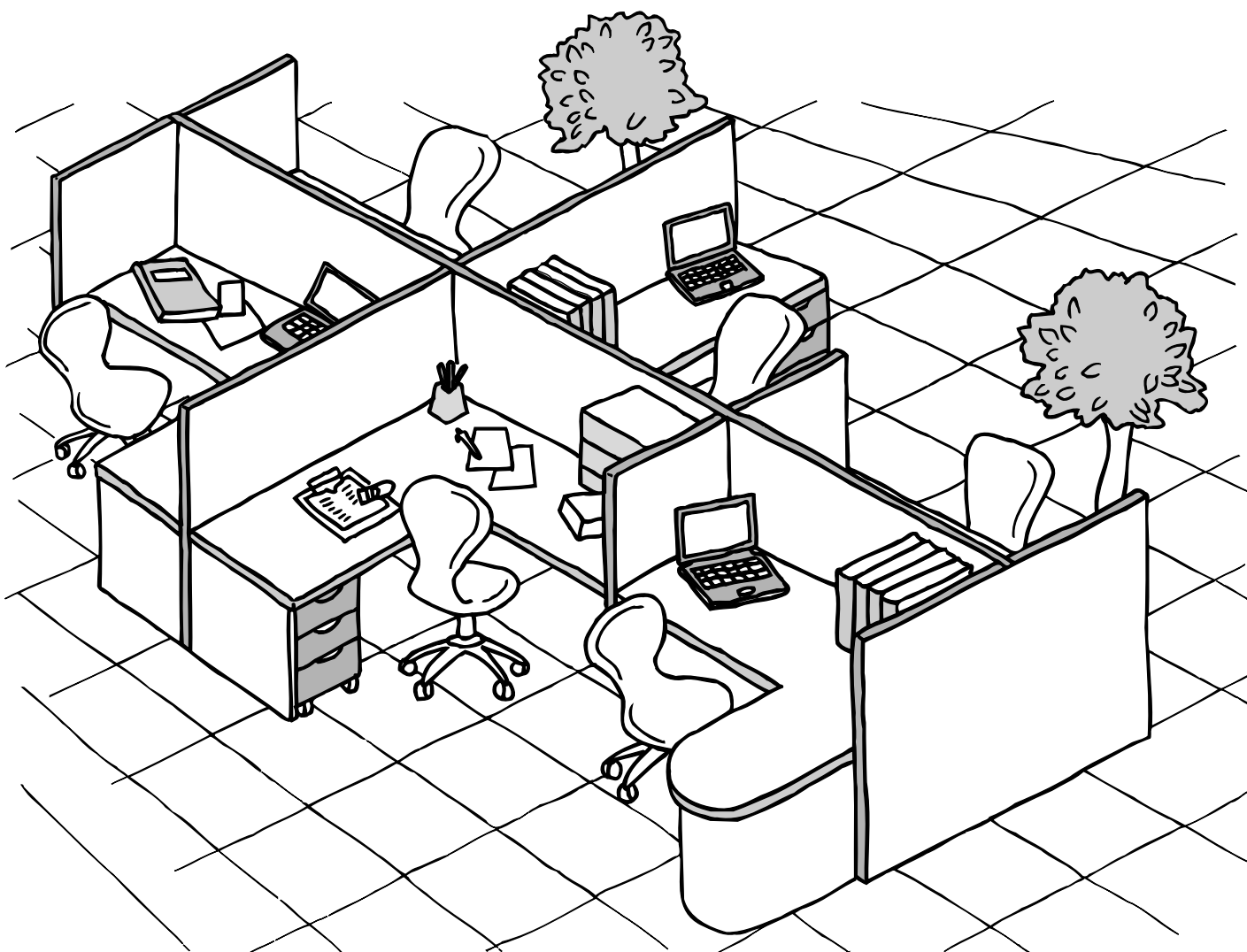


Panasonic®

Software Operating Instructions (For Panasonic Printing System Ver. 6)

Model No. DP-180/190/1520P/1820P/1820E



WORKIO™

Before operating this software, please read these instructions completely and keep these operating instructions for future reference.

English

Before Starting

Printer Section

Troubleshooting

Appendix

The following trademarks and registered trademarks are used throughout this manual:

Microsoft, MS-DOS, Windows and Windows NT are registered trademarks of Microsoft Corporation in the USA and other countries.

i386, i486 and Pentium are trademarks of Intel Corporation.

The USB-IF Logos are trademarks of Universal Serial Bus Implementers Forum, Inc.

TrueType is a registered trademark of Apple Computer, Inc.

PEERLESSPAGE™ is a trademark of the PEERLESS System Corporation; and,

PEERLESSPrint® and Memory Reduction Technology® are registered trademarks

PEERLESS System Corporation; and COPYRIGHT© 2000 PEERLESS System Corporation

Universal Font Scaling Technology (UFST) and all typefaces have been licensed from Agfa Monotype.

Novell and NetWare are registered trademarks of Novell, Inc. in the USA and other countries.

All other trademarks identified herein are the property of their respective owners.

Copyright © 2004 by Panasonic Communications Co., Ltd.

All rights reserved. Unauthorized copying and distribution is a violation of law.

Published in Japan.

The contents of these Operating Instructions are subject to change without notice.

Table of Contents

Before Starting

System Requirements.....	4
--------------------------	---

Printer Section

Installing the Printer Driver	5
■ Installation Procedures.....	5
■ Connecting with a USB Cable (Windows 98).....	12
■ Connecting with a USB Cable (Windows Me).....	16
■ Connecting with a USB Cable (Windows 2000).....	19
■ Connecting with a USB Cable (Windows XP/Windows Server 2003).....	22
Installing the LPR (Line Printer Remote) Monitor	24
■ Windows 98/Windows Me	24
■ Windows NT 4.0	28
■ Windows 2000/Windows XP/Windows Server 2003	32
Configuring the Printer Driver Settings	36
■ Windows 98/Windows Me	36
■ Windows NT 4.0 (Administrator)	44
■ Windows NT 4.0 (User).....	52
■ Windows 2000/Windows XP/Windows Server 2003 (Administrator).....	53
■ Windows 2000/Windows XP/Windows Server 2003 (User)	62
■ All Windows Common Settings	63
Print Operation	74
■ Printing from Windows Applications.....	74
■ Printing on Network.....	75
■ Internet Printing Protocol (IPP) Printing	77
■ Setting the IPP Printing	77
Specifications	81
■ Available Paper Type and Paper Size.....	81
■ Available Paper Weight and Capacity.....	83
■ Transparencies and Labels.....	84
■ Envelopes.....	85
■ Loading the Envelopes.....	87
■ Printer Specifications.....	88

Troubleshooting

Troubleshooting	90
■ Printing Operation Fails	90
■ Document is Not Printed Correctly	91

Appendix

Appendix	92
■ Printing Area.....	92
■ Symbol Table	93

System Requirements

- Personal Computer : IBM PC/AT and compatibles (CPU Pentium II or greater)
- Operating System : Windows 98^{*1}, Windows Me^{*2}, Windows NT 4.0^{*3}, Windows 2000^{*4}, Windows XP^{*5}, Windows Server 2003^{*6}
- System Memory : The minimum recommended Memory for each OS is as follows:
 - Windows 98, Windows Me : 64 MB or greater
 - Windows 2000, Windows XP, Windows NT 4.0, Windows Server 2003 : 128 MB or greater
- Free Disk Space : 40MB or more (Not including storage space for images for Image Overlay function).
- CD-ROM Drive : Used for installing the software and utilities from the CD-ROM.
- Interface : 10Base-T/100Base-TX Ethernet port, USB port

* 1 Microsoft® Windows® 98 operating system (hereafter Windows 98)

* 2 Microsoft® Windows® Millennium Edition operating system (hereafter Windows Me)

* 3 Microsoft® Windows NT® operating system Version 4.0 (hereafter Windows NT 4.0)

* 4 Microsoft® Windows® 2000 operating system (hereafter Windows 2000)

* 5 Microsoft® Windows® XP operating system (hereafter Windows XP)

* 6 Microsoft® Windows Server™ 2003 operating system (hereafter Windows Server 2003)

Installing the Printer Driver

Installation Procedures

See the following pages to install the printer driver properly on your version of Windows OS and for printer usage.

If you are using as a USB Printer:

- Windows 98 : Follow the procedures on pages 12 to 15. (Connecting with a USB Cable)
- Windows Me : Follow the procedures on pages 16 to 18. (Connecting with a USB Cable)
- Windows NT : This Windows OS does not support a USB Printer.
- Windows 2000 : Follow the procedures on pages 19 to 21. (Connecting with a USB Cable)
- Windows XP/ : Follow the procedures on pages 22 to 23. (Connecting with a USB Cable)
- Windows Server 2003

If your are using as a Network Printer:

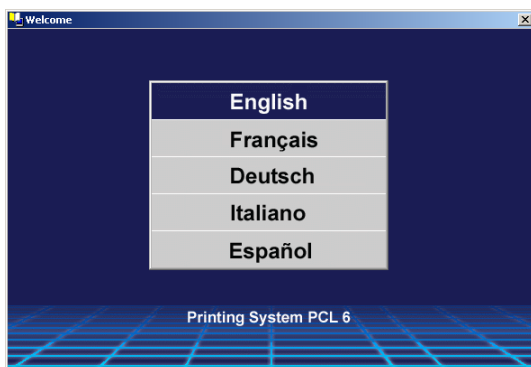
- Windows 98 : Follow the procedures on pages 6 to 11 (Installing the Printer Driver) and then pages 24 to 27 (Installing the LPR Monitor).
- Windows Me : Follow the procedures on pages 6 to 11 (Installing the Printer Driver) and then pages 24 to 27 (Installing the LPR Monitor).
- Windows NT : Follow the procedures on pages 6 to 11 (Installing the Printer Driver) and then pages 28 to 31 (Installing the LPR Monitor).
- Windows 2000 : Follow the procedures on pages 6 to 11 (Installing the Printer Driver) and then pages 32 to 35 (Installing the LPR Monitor).
- Windows XP/ : Follow the procedures on pages 6 to 11 (Installing the Printer Driver) and then pages 32 to 35 (Installing the LPR Monitor).
- Windows Server 2003

Installing the Printer Driver

1

Insert the Panasonic Printing System CD-ROM.

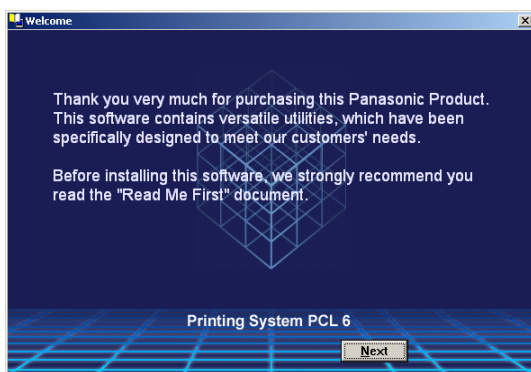
2



Click on the desired language.

Note: If the CD-ROM does not launch automatically, double click the **My Computer** icon on the Desktop or on the **Start** menu, then double click the CD-ROM icon.

3

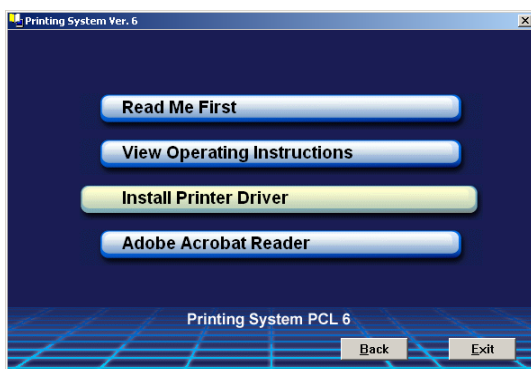


Click the button.

Note for Windows 98/Windows Me users:

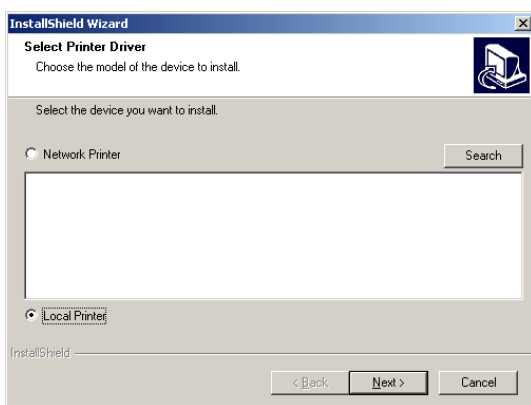
If your computer does not have the LPR Port Monitor installed, please proceed to "Installing the LPR Monitor" on page 24 before continuing this installation.

4



Click **Install Printer Driver**.

5

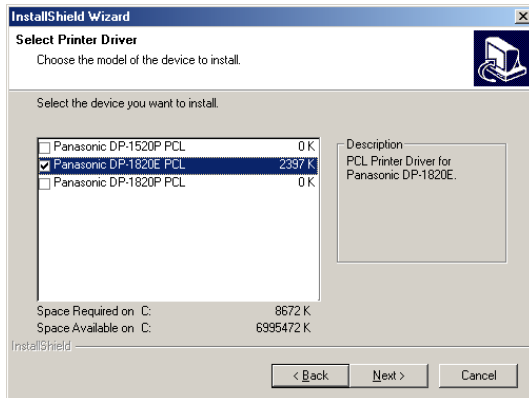


Select **Local Printer** and click the button.

Note: If your machine has been installed on your network, click the button to find it. Then, select the machine from the list of network connected units, and click the button.

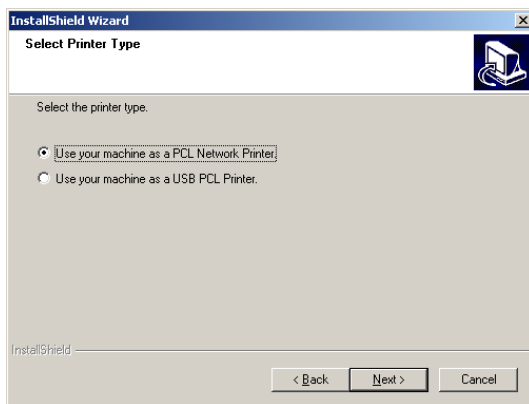
Installing the Printer Driver

6



Select your machine's model(s) check box and click the **Next** button.

7

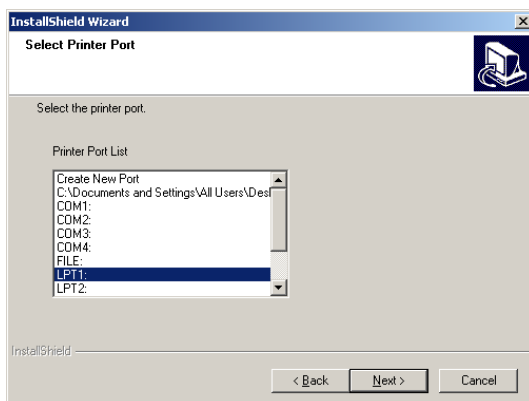


Select how your machine will be used, either as a Network Printer or as a USB Printer.

If USB Printer is selected, click the **Next** button and skip to Step 12.

Note: Make sure that the Power Switch of your machine is OFF and the USB cable is not connected to your computer.

8

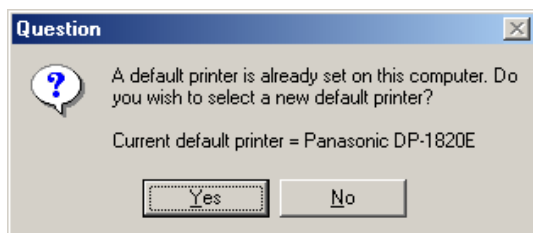


Check **LPT1:** and click the **Next** button. (See Note 2 on page 11)

Continued on the next page...

Installing the Printer Driver

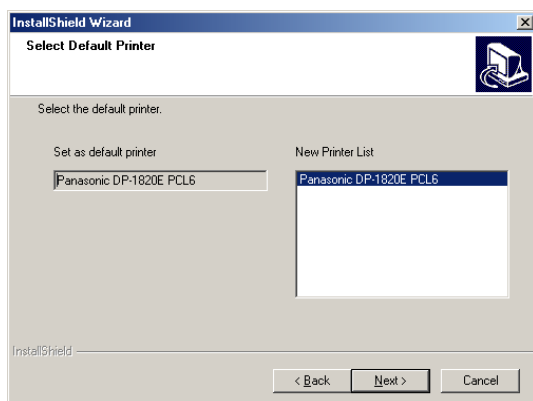
9



Click the button if you would like to change your current default printer to the one that you are installing.

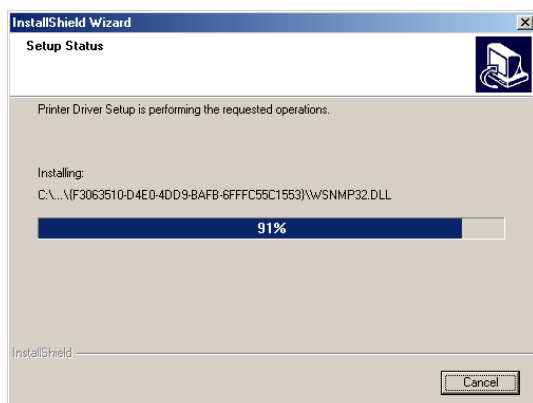
Note: *This dialog box only appears if another printer is already installed.*

10



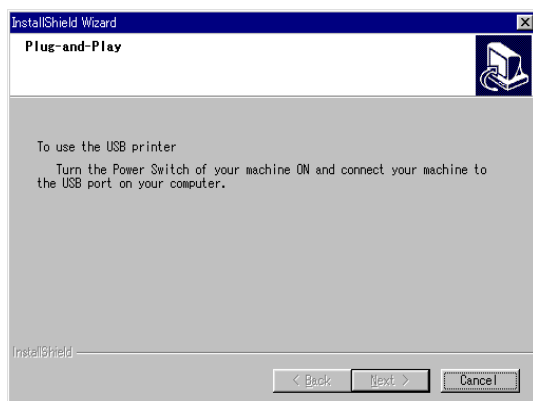
Select your new default printer from the New Printer List and click the button.

11



The required files are copied.

12a



<Windows 98, Windows Me>

When this message appears, turn the Power Switch of your machine ON and connect your machine to an available USB Port on your computer.

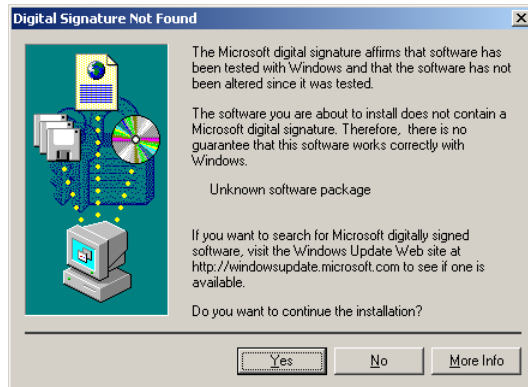
Note: (For Windows 98 users)

If your PC does not detect the device, and a dialog box does not appear confirming its detection after the USB cable is connected, proceed as follows:

1. Locate the **DrvIns.exe** file under the **D:\Tools\DrvUnIns** directory on the CD-ROM and execute the file to delete the Printer Driver (where "D:" is your CD-ROM drive).
2. Follow the procedures on pages 12 to 15 to reinstall the Printer Driver.

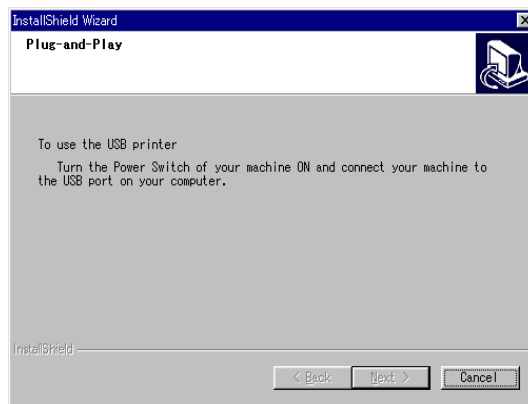
Installing the Printer Driver

12b

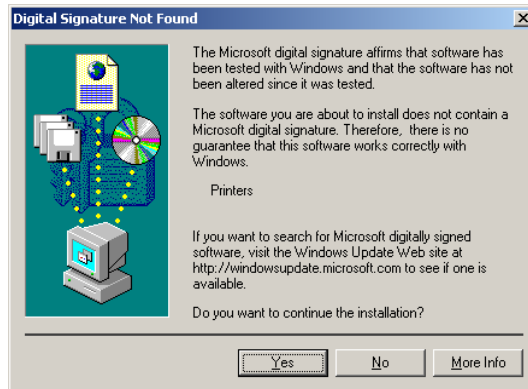


<Windows 2000>

Click the button.



When this message appears, turn the Power Switch of your machine ON and connect your machine to an available USB Port on your computer.

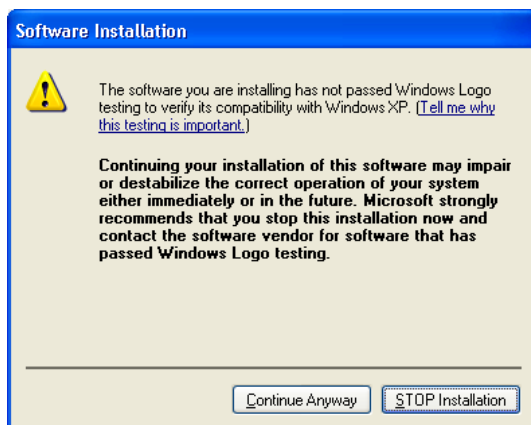


Click the button.

Continued on the next page...

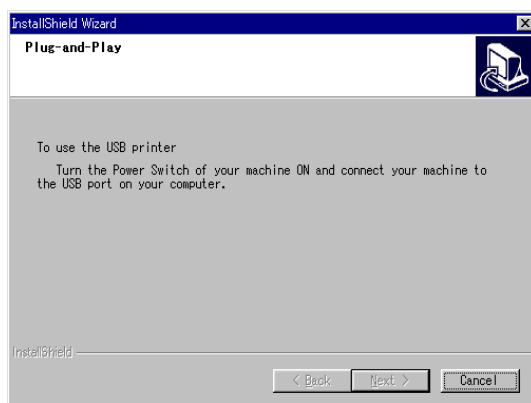
Installing the Printer Driver

12c



<Windows XP/Windows Server 2003>

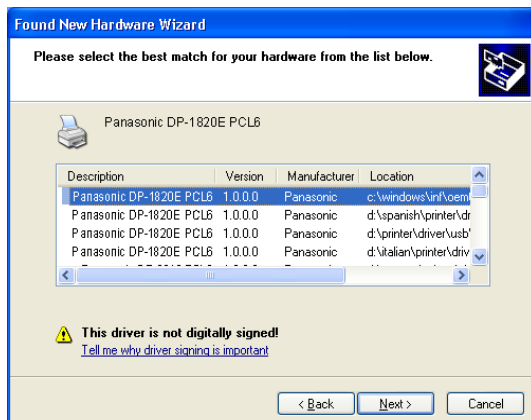
Click the **Continue Anyway** button.



When this message appears, turn the Power Switch of your machine ON and connect your machine to an available USB Port on your computer.



Select **Install the software automatically** and click the **Next** button.



This message may appear if you have a previous version of the printer driver installed.

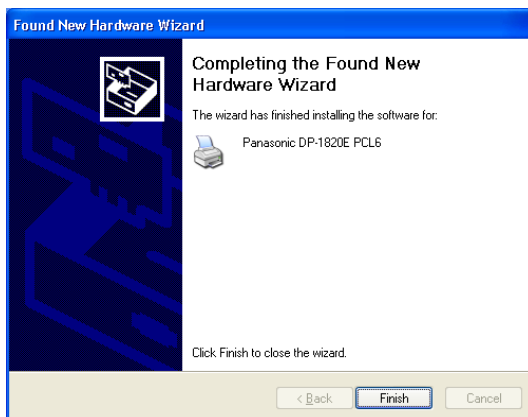
Select the latest version of the *.inf file and click the **Next** button.

Installing the Printer Driver

12c

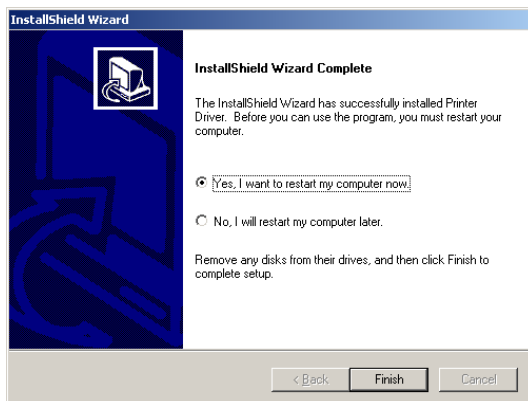


Click the **Continue Anyway** button.



Click the **Finish** button.

13



When the setup process is completed, a message is displayed prompting you to restart your computer.

Click the **Finish** button to restart your computer.

The Panasonic/Panafax Printer Driver has been installed, and the Panasonic/Panafax Printer icon(s) are added to the Printer folder.

If you are installing the Printer Driver for network printing, please contact your network administrator for the IP Address of the machine and proceed to the next section to install the LPR Monitor service for the version of Windows you are using after your computer has rebooted.

NOTE

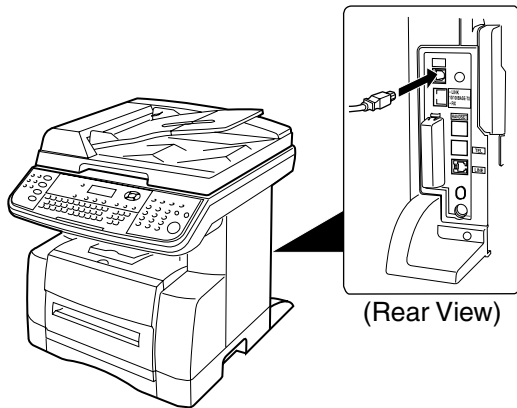
1. When installing on Windows NT 4.0, Windows 2000, Windows XP or Windows Server 2003, logon to the computer/network using an account with administrator rights.
2. If the LPR Monitor is already installed on your PC, select **Create New Port** in step 8. Then, select **Search the network printer** to search the machine(s) connected on your network.
3. To remove the Printer Driver, select **Panasonic DP-xxx** in **Add/Remove Programs Properties** in the Control Panel and click the **Add...** / **Remove** button.

Installing the Printer Driver

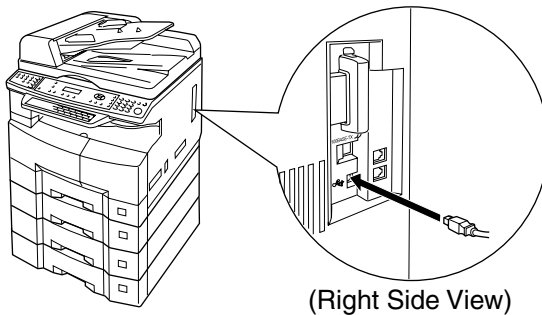
Connecting with a USB Cable (Windows 98)

When using the USB cable to connect the printer, install the printer driver by following the steps below.

1



Connect the printer to the PC with a USB cable.
Turn the Power Switch of your machine ON.



2



The **New Hardware Found** dialog box appears for a brief moment, followed by the **Add New Hardware Wizard** dialog box.

Click the **Next** button.

3



Select **Search for the best driver for your device**.

Click the **Next** button.

Installing the Printer Driver

Connecting with a USB Cable (Windows 98)

4

Insert the CD-ROM included with the PCL Option.

5



Select **Specify a location** and type **D:\English\PCL\Driver\UsbDrv\Win9x** (where "D:" is your CD-ROM drive).

Click the  button.

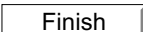
6



Click the  button.

7



Click the  button.

8



The **New Hardware Found** dialog box appears for a brief moment, followed by the **Add New Hardware Wizard** dialog box.

Click the  button.

Continued on the next page...

Installing the Printer Driver

Connecting with a USB Cable (Windows 98)

9



Select **Search for the best driver for your device**.

Click the **Next** button.

10



Select **Specify a location** and type **D:\English\PCL\Driver\Win9x** (where "D:" is your CD-ROM drive).

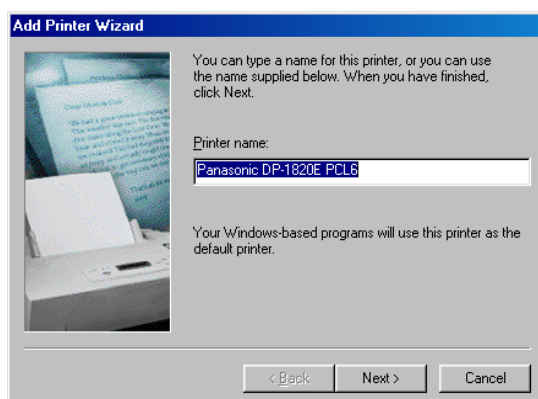
Click the **Next** button.

11



Click the **Next** button.

12



Enter the Printer name and click the

Next button.

Connecting with a USB Cable (Windows 98)

13

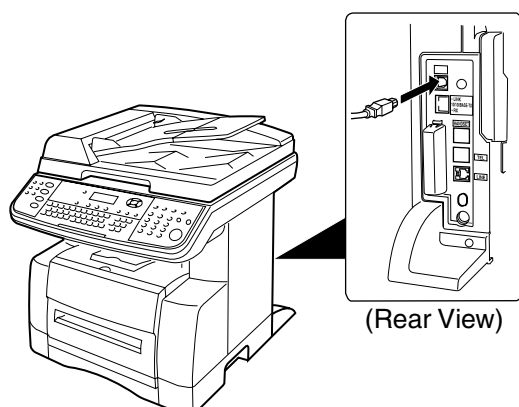


Click the button.

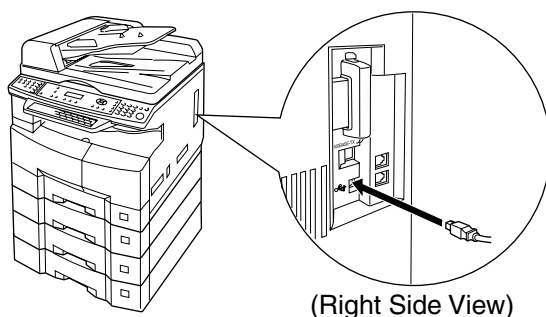
Installing the Printer Driver

Connecting with a USB Cable (Windows Me)

1



Connect the printer to the PC with a USB cable.
Turn the Power Switch of your machine ON.



2



The **New Hardware Found** dialog box appears for a brief moment, followed by the **Add New Hardware Wizard** dialog box.

Select **Specify the location of the driver**.

Click the **Next** button.

3

Insert the CD-ROM included with the PCL Option.

4



Select **Specify a location** and type **D:\English\PCL\Driver\UsbDrv\Win9x** (where "D:" is your CD-ROM drive).

Click the **Next** button.

Installing the Printer Driver

Connecting with a USB Cable (Windows Me)

5



Click the **Next** button.

6



Click the **Finish** button.

7

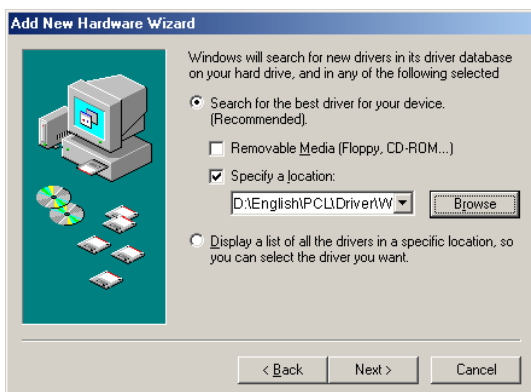


The **New Hardware Found** dialog box appears for a brief moment, followed by the **Add New Hardware Wizard** dialog box.

Select **Specify the location of the driver**.

Click the **Next** button.

8



Select **Specify a location** and type **D:\English\PCL\Driver\Win9x** (where "D:" is your CD-ROM drive).

Click the **Next** button.

Continued on the next page...

Installing the Printer Driver

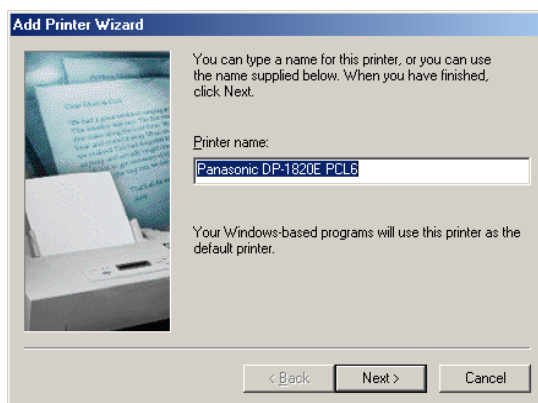
Connecting with a USB Cable (Windows Me)

9



Click the button.

10



Enter the Printer name and click the

button.

11

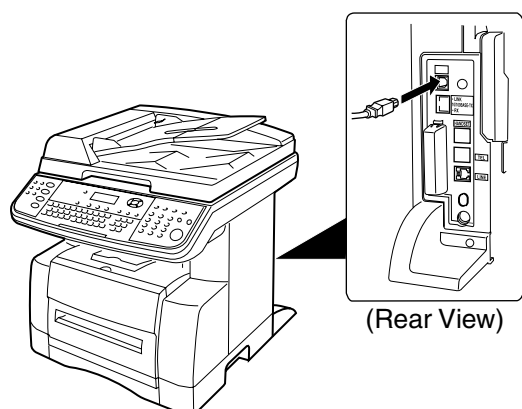


Click the button.

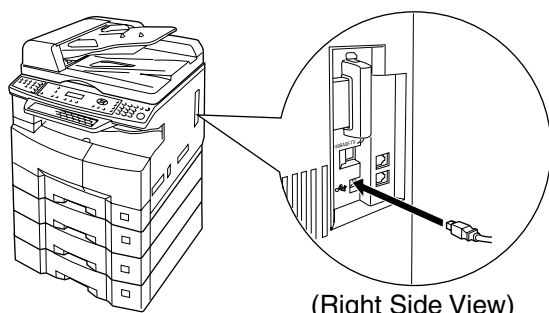
Installing the Printer Driver

Connecting with a USB Cable (Windows 2000)

1



(Rear View)



(Right Side View)

Connect the printer to the PC with a USB cable.

Turn the Power Switch of your machine ON.

2



The **Found New Hardware Wizard** dialog box appears.

Click the **Next** button.

3



Select **Search for a suitable driver for my device**.

Click the **Next** button.

Continued on the next page...

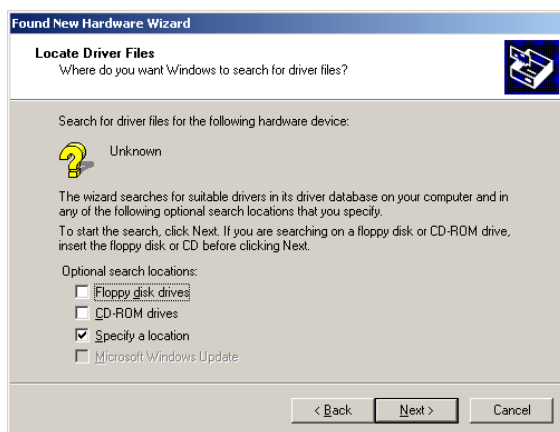
Installing the Printer Driver

Connecting with a USB Cable (Windows 2000)

4

Insert the CD-ROM included with the PCL Option.

5



Select **Specify a location**.

Click the **Next** button.

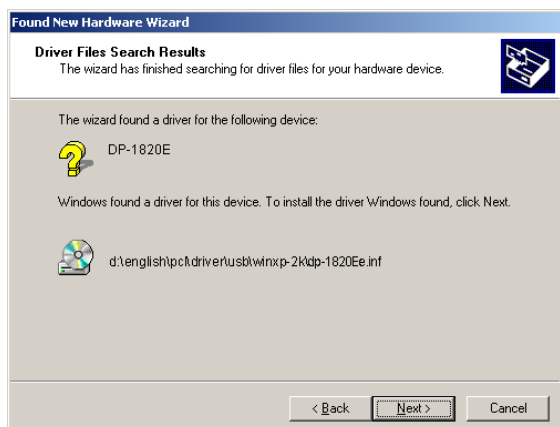
6



Type **D:\English\PCL\Driver\WinXP-2K** (where "D:" is your CD-ROM drive).

Click the **OK** button.

7

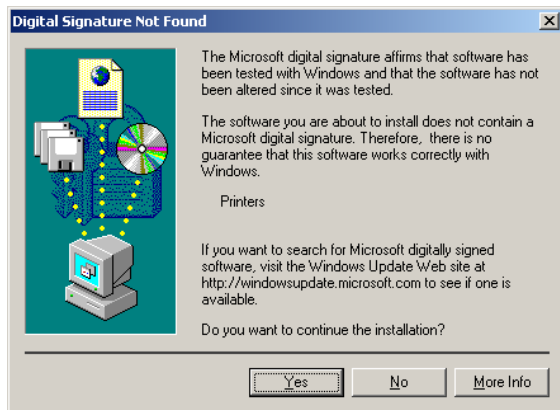


Click the **Next** button.

Installing the Printer Driver

Connecting with a USB Cable (Windows 2000)

8



Click the button.

9

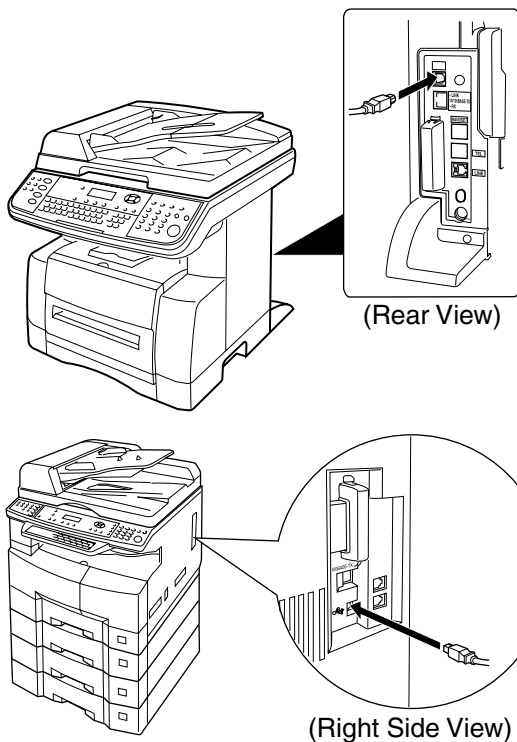


Click the button.

Installing the Printer Driver

Connecting with a USB Cable (Windows XP/Windows Server 2003)

1



Connect the printer to the PC with a USB cable.

Turn the Power Switch of your machine ON.

2

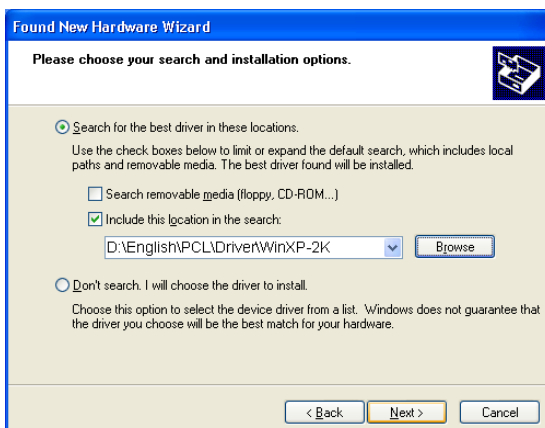


The **Found New Hardware Wizard** dialog box appears.

Select **Install from a list or specific location (Advanced)**.

Click the **Next** button.

3



Select **Include this location in the search**.

Type **D:\English\PCL\Driver\WinXP-2K** (where "D:" is your CD-ROM drive).

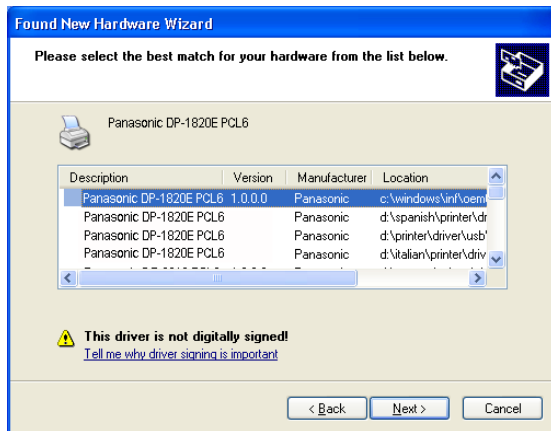
Insert the CD-ROM included with the PCL Option.

Click the **Next** button.

Installing the Printer Driver

Connecting with a USB Cable (Windows XP/Windows Server 2003)

4



This message may appear if you have a previous version of the printer driver installed.

Select the latest version of the *.inf file and click the **Next** button.

5



Click the **Continue Anyway** button.

6



Click the **Finish** button.

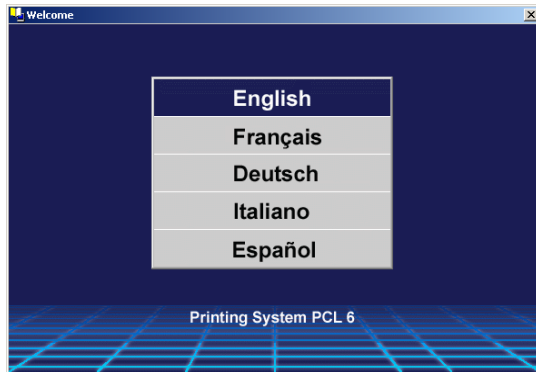
Installing the LPR (Line Printer Remote) Monitor

Windows 98/Windows Me

1

Insert the Panasonic Printing System CD-ROM.

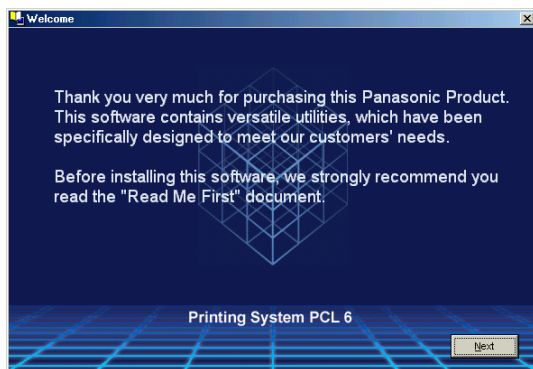
2



Click on the desired language.

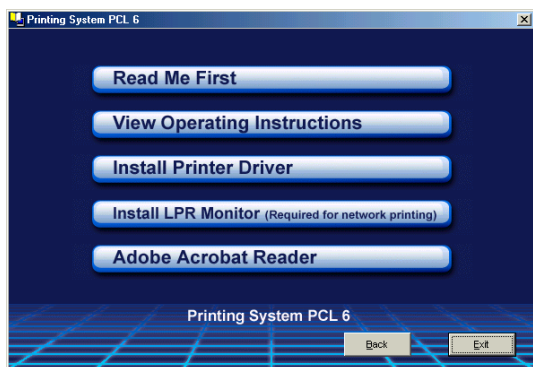
Note: If the CD-ROM does not launch automatically, double click the **My Computer** icon on the Desktop or on the **Start** menu, then double click the CD-ROM icon.

3



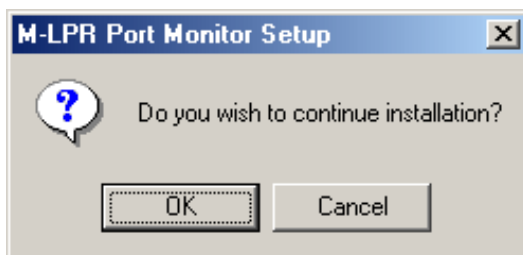
Click the button.

4



Click **Install LPR Monitor**.

5



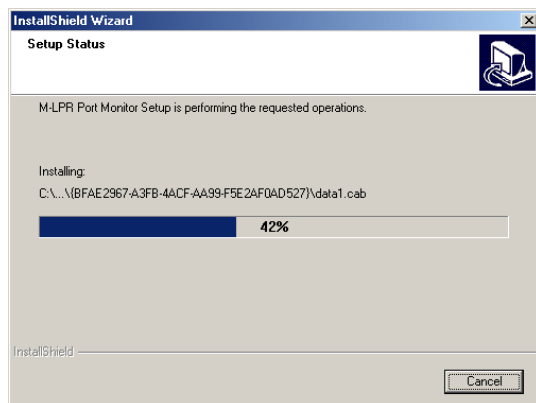
The **M-LPR Port Monitor Setup** dialog box appears.

Click the button.

Installing the LPR (Line Printer Remote) Monitor

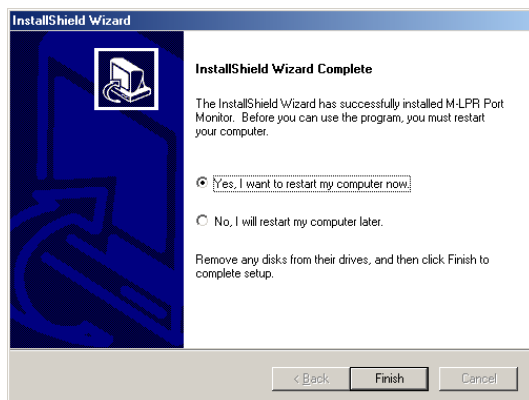
Windows 98/Windows Me

6



The required files are copied.

7



The setup program copies the necessary files onto your hard disk.

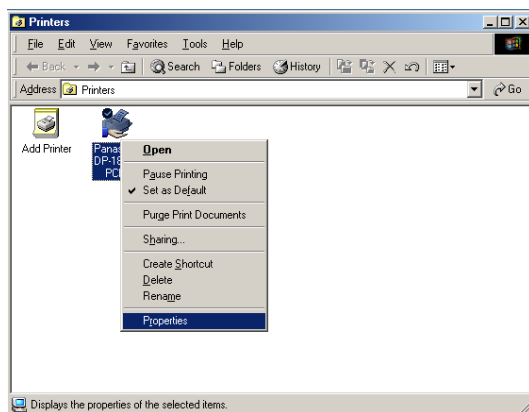
When the setup process is completed, a message is displayed prompting you to restart your computer.

It is recommended that you restart your computer now so that the LPR Monitor can be started.

Click the **Finish** button.

If you have not installed the printer driver yet, please proceed to "Installing the Printer Driver" on page 5.

8



After your computer has rebooted, click the **Start** button, select **Settings**, and then click **Printers**.

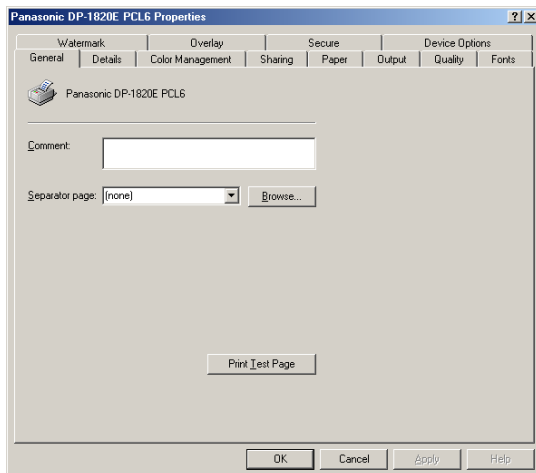
The **Printers** folder appears.

Right-click on the desired printer icon and select **Properties** from the pop-up menu.

Installing the LPR (Line Printer Remote) Monitor

Windows 98/Windows Me

9

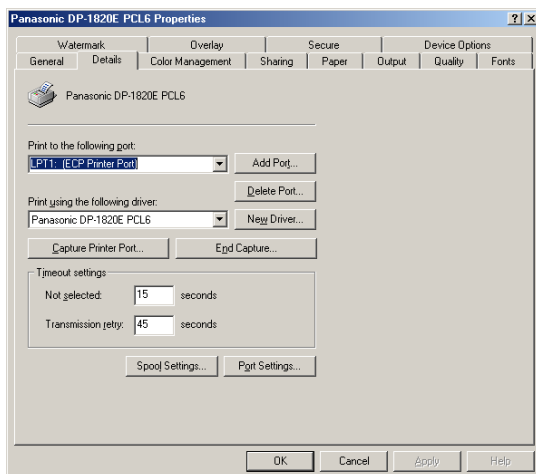


The printer properties dialog box appears.

The following step is to register the LPR Port for network printing.

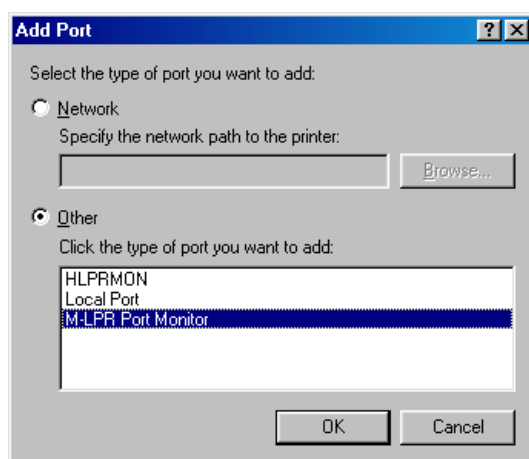
Before proceeding, ensure that the printer is installed, connected to the network, turned ON and is operating properly.

10



Select the **Details** tab and click the **Add Port...** button.

11

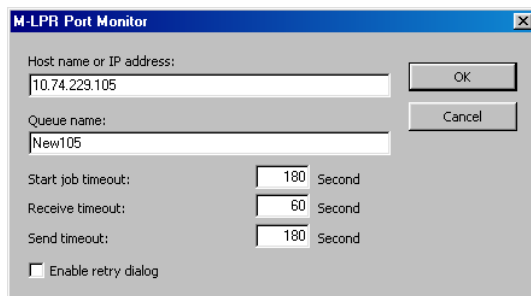


The **Add Port** dialog box appears. Click the **Other** radio button, select **M-LPR Port Monitor** from the "Click the type of port you want to add:" list, and click the **OK** button.

Installing the LPR (Line Printer Remote) Monitor

Windows 98/Windows Me

12

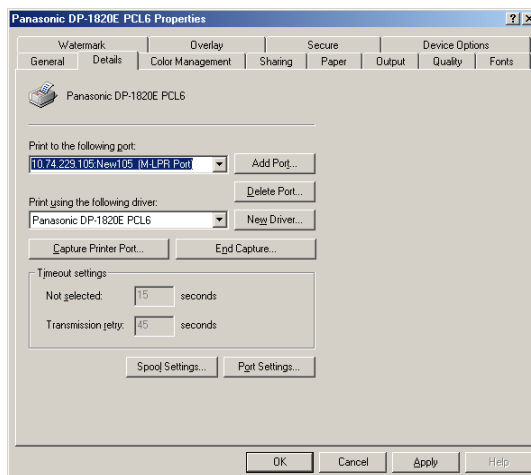


The **M-LPR Port Monitor** dialog box appears.

Type the IP Address of the machine in the **Host name or IP address:** text box and the queue name (e.g. New105) in the **Queue name:** text box.

Click the **OK** button. If an error occurs because the queue name has already been used for the same IP Address, select a different unique name such as "New106".

13



The screen reverts to Printer Properties.

Check that "Print to the following port:" has been changed as entered in step 12, and click the

Apply button, and then the **OK** button.

The printer properties dialog box closes and you have now configured the printer as a network printer.

NOTE

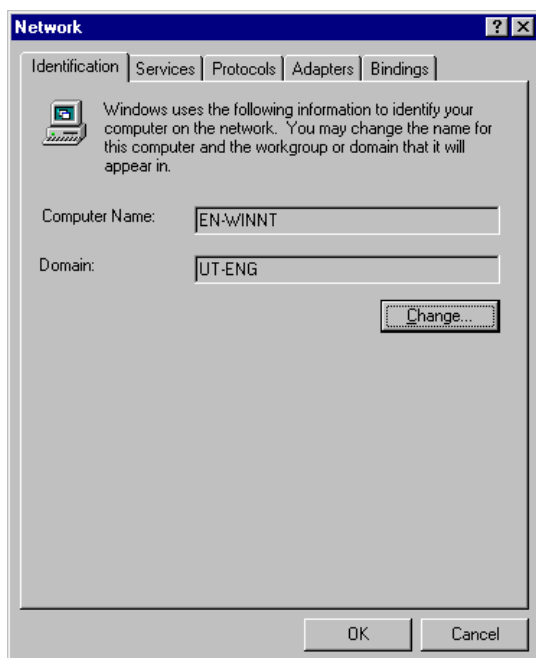
1. To print data via LAN, the LPR Monitor must be installed on your PC.

Installing the LPR (Line Printer Remote) Monitor

Windows NT 4.0

Logon using an account with administrator rights.

1



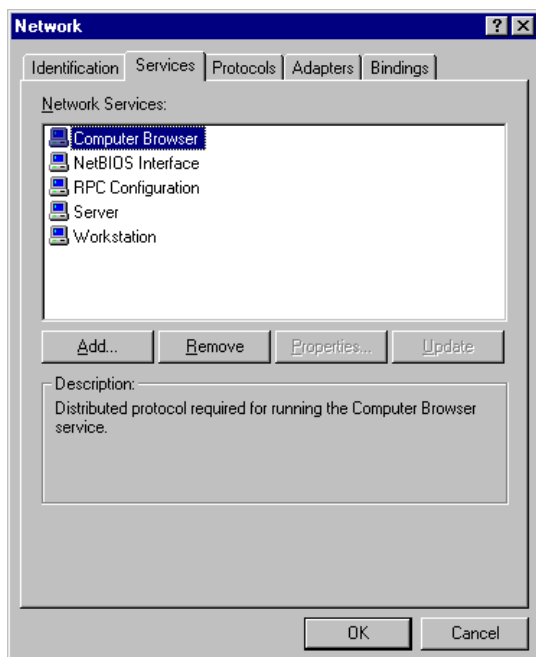
Click the **Start** button, select **Settings**, and click **Control Panel**.

The **Control Panel** window appears.

Double-click the **Network** icon.

The **Network** dialog box appears.

2



Click the **Services** tab.

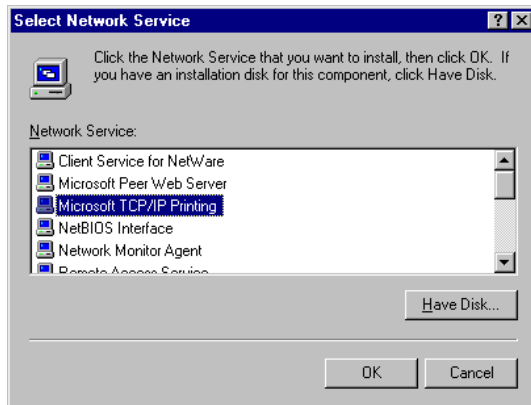
Verify whether the LPR Service is already installed. (Indicated by **Microsoft TCP/IP Printing** shown in the Network Services list.)

If it is already installed, skip to Step 7. Otherwise continue installing the LPR Service.

Installing the LPR (Line Printer Remote) Monitor

Windows NT 4.0

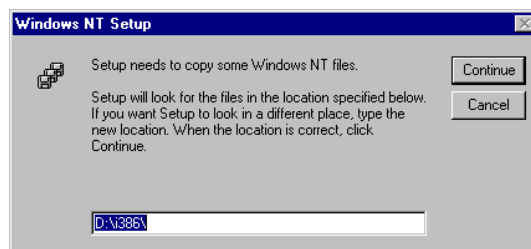
3



Click the **Add...** button to display the **Select Network Service** dialog box, and select **Microsoft TCP/IP Printing**.

Click the **OK** button.

4

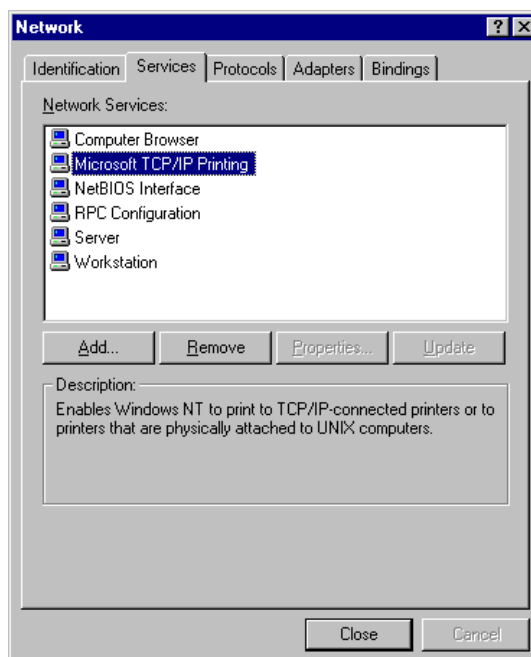


The **Windows NT Setup** dialog box appears.

Insert the Windows NT 4.0 CD-ROM, and type **D:\i386** (where "D:" is your CD-ROM drive).

Click the **Continue** button.

5

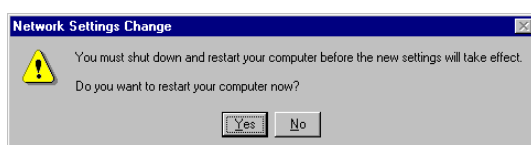


After the files have been copied into the hard drive of your PC, the display returns to the Network dialog box. Confirm that the Microsoft TCP/IP Printing service has been added to the Network Services list.

Click the **Close** button.

Note: If the OK button does not change into a Close button, remove and reinstall the Microsoft TCP/IP Printing service.

6



When the **Network Settings Change** dialog box is displayed, click the **Yes** button to restart your computer now.

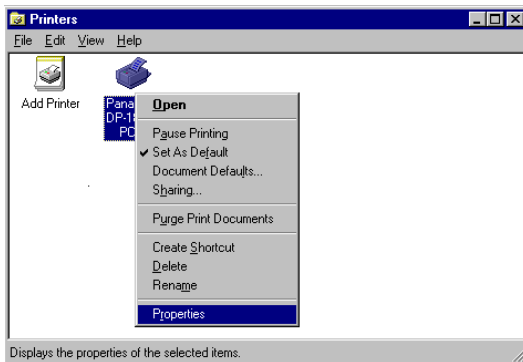
You have now completed the LPR Service installation.

Continued on the next page...

Installing the LPR (Line Printer Remote) Monitor

Windows NT 4.0

7

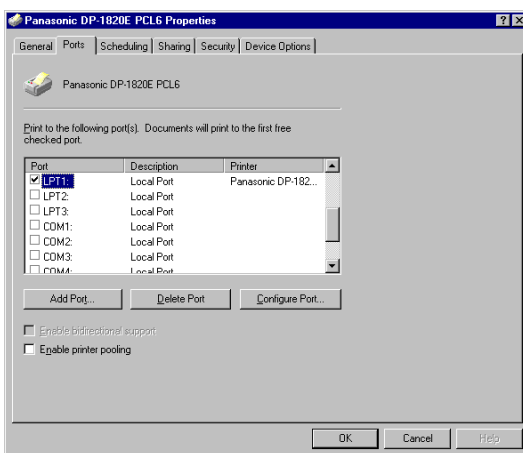


After your computer has rebooted, click the **Start** button, select **Settings**, and then click **Printers**.

The **Printers** folder appears.

Right-click on the desired printer icon and select **Properties** from the pop-up menu.

8

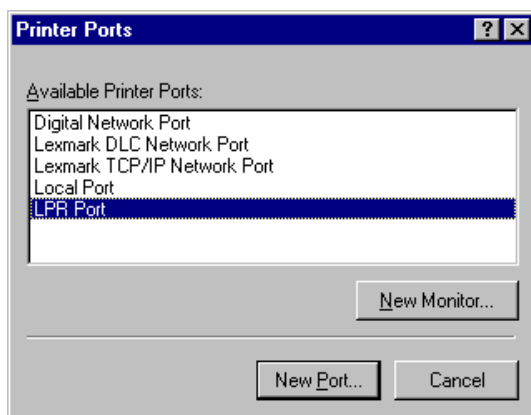


The following step is to register the LPR Port for network printing.

Before proceeding, ensure that the printer is installed, connected to the network, turned ON and is operating properly.

Select the **Ports** Tab and click the **Add Port...** button.

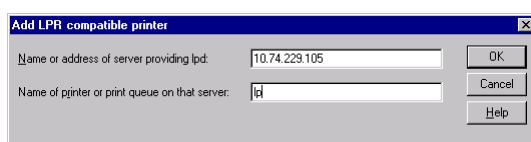
9



The **Printer Ports** dialog box appears.

Select **LPR Port** and click the **New Port ...** button.

10



The **Add LPR compatible printer** dialog box appears.

Enter the IP Address of the printer in the upper field, and "lp" for the print queue name in the lower field.

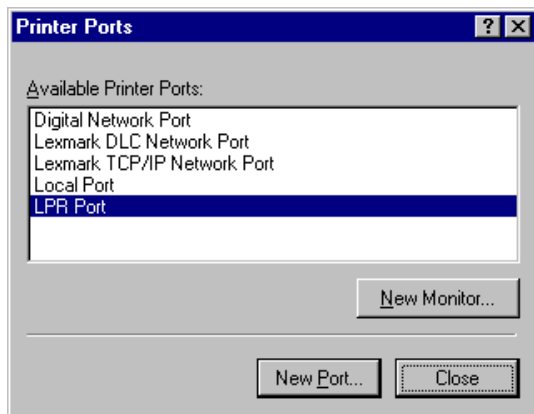
Click the **OK** button.

(Please wait while the wizard verifies the IP Address and connectivity to the network).

Installing the LPR (Line Printer Remote) Monitor

Windows NT 4.0

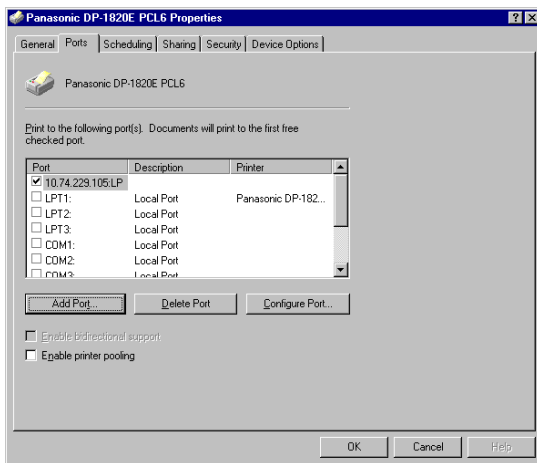
11

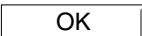


The **Printer Ports** dialog box appears.

Click the  button.

12



Select the printer port and click the  button.

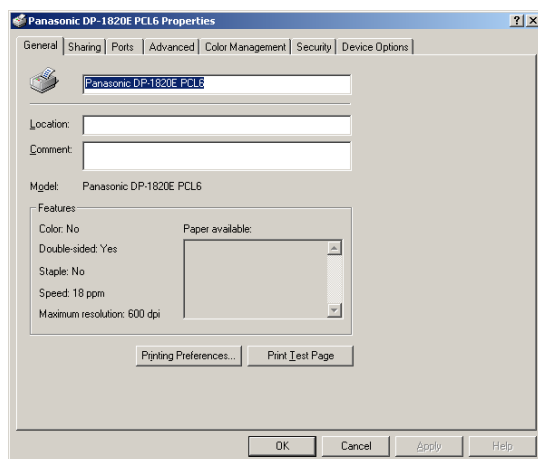
The printer properties dialog box closes and you have now configured the printer as a network printer.

Installing the LPR (Line Printer Remote) Monitor

Windows 2000/Windows XP/Windows Server 2003

Logon using an account with administrator rights.

1

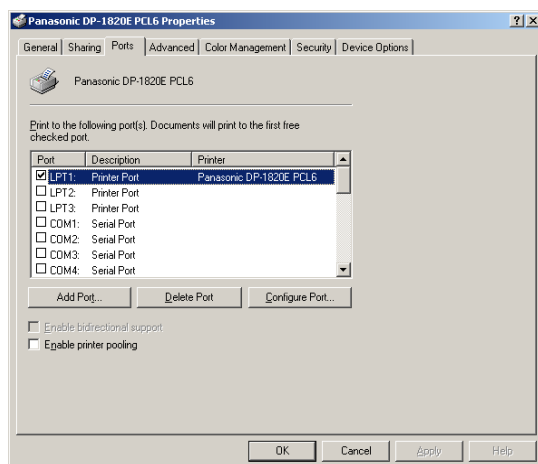


Open the **Printers** folder.

Right-click on the desired printer icon and select **Properties** from the pop-up menu.

The printer properties dialog box appears.

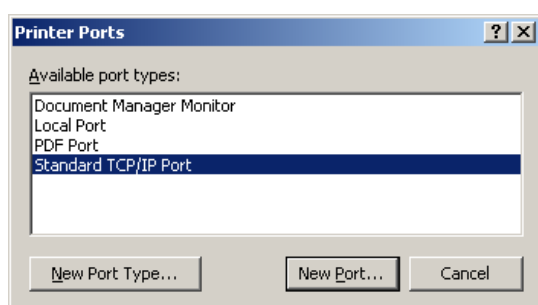
2



Select the **Ports** Tab and click the

Add Port... button.

3



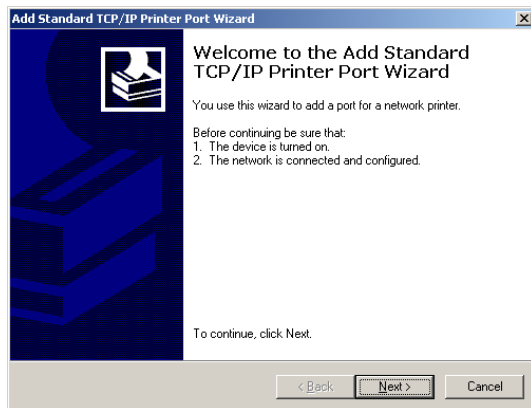
Select **Standard TCP/IP Port** and click the

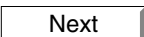
New Port ... button.

Installing the LPR (Line Printer Remote) Monitor

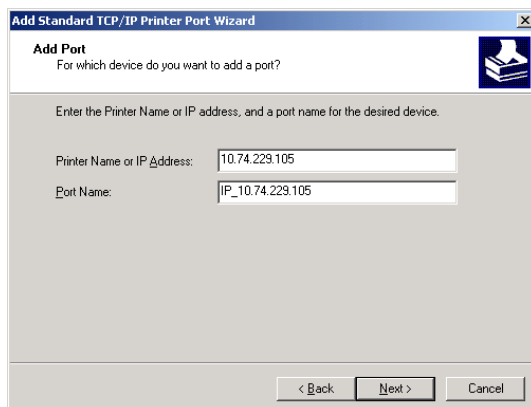
Windows 2000/Windows XP/Windows Server 2003

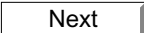
4



Click the  button.

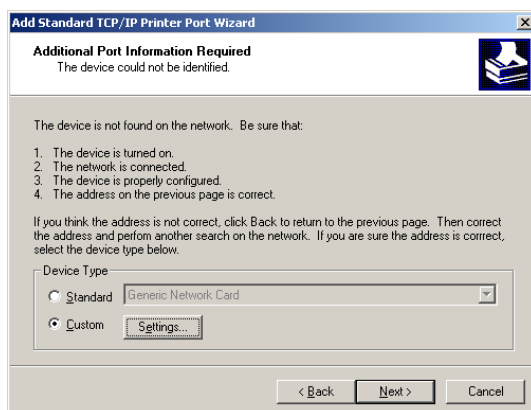
5

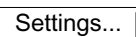


Enter the IP Address and the Port Name and click the  button.

Note: *The Port Name is automatically entered by Windows 2000/Windows XP/Windows Server 2003. You may need to change it as required.*

6



Select **Custom** and click the  button.

Continued on the next page...

Installing the LPR (Line Printer Remote) Monitor

Windows 2000/Windows XP/Windows Server 2003

7

Configure Standard TCP/IP Port Monitor

Port Settings

Port Name: IP_10.74.229.105

Printer Name or IP Address: 10.74.229.105

1 Protocol: ☐ Raw ☒ LPR

Raw Settings

Port Number: 9100

2 LPR Settings

Queue Name: LPR1

☒ LPR Byte Counting Enabled

☐ SNMP Status Enabled

Community Name: public

SNMP Device Index: 1

3 OK Cancel

1. In the Protocol section, select **LPR**.
2. In the LPR Settings section, enter the **Queue Name** (e.g. LPR1) and select **LPR Byte Counting Enabled**.
3. Click the **OK** button.

8

Add Standard TCP/IP Printer Port Wizard

Additional Port Information Required

The device could not be identified.

The device is not found on the network. Be sure that:

1. The device is turned on.
2. The network is connected.
3. The device is properly configured.
4. The address on the previous page is correct.

If you think the address is not correct, click Back to return to the previous page. Then correct the address and perform another search on the network. If you are sure the address is correct, select the device type below.

Device Type

☐ Standard Generic Network Card

☒ Custom Settings...

< Back Next > Cancel

Click the **Next** button.

9

Add Standard TCP/IP Printer Port Wizard

Completing the Add Standard TCP/IP Printer Port Wizard

You have selected a port with the following characteristics.

SNMP: No

Protocol: LPR, LPR1

Device: 10.74.229.105

Port Name: IP_10.74.229.105

Adapter Type:

To complete this wizard, click Finish.

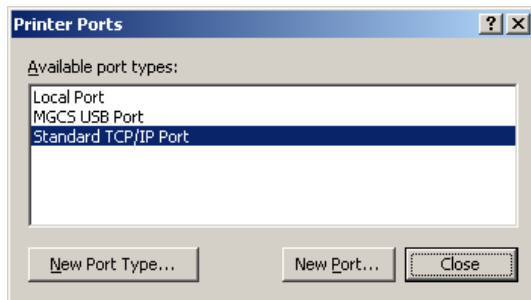
< Back Finish Cancel

Click the **Finish** button.

Installing the LPR (Line Printer Remote) Monitor

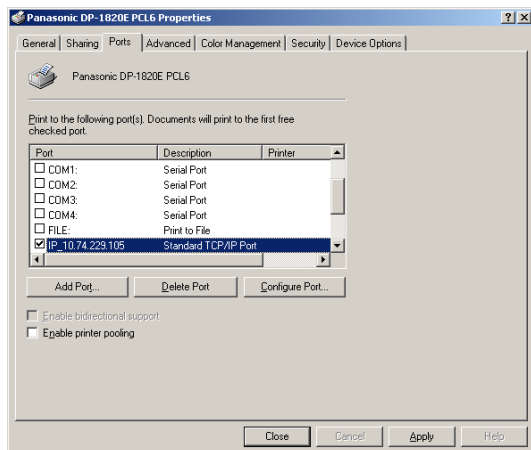
Windows 2000/Windows XP/Windows Server 2003

10



Click the **Close** button.

11



Click the **Apply** button.

Click the **OK** button.

The printer properties dialog box closes and you have now configured the printer as a network printer.

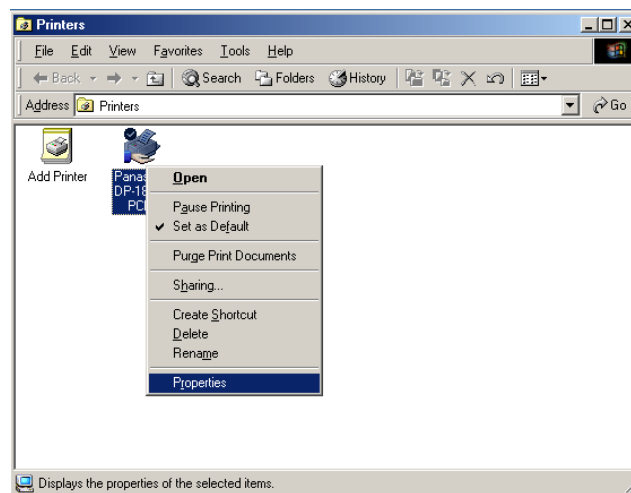
Configuring the Printer Driver Settings

Windows 98/Windows Me

To change the printer settings, open the dialog box for the printer properties by performing the following steps.

- 1** Click the **Start** button, select **Settings**, and then click **Printers**.
- 2** Right-click on the desired printer icon in the **Printers** folder, and select **Properties** in the pop-up menu.

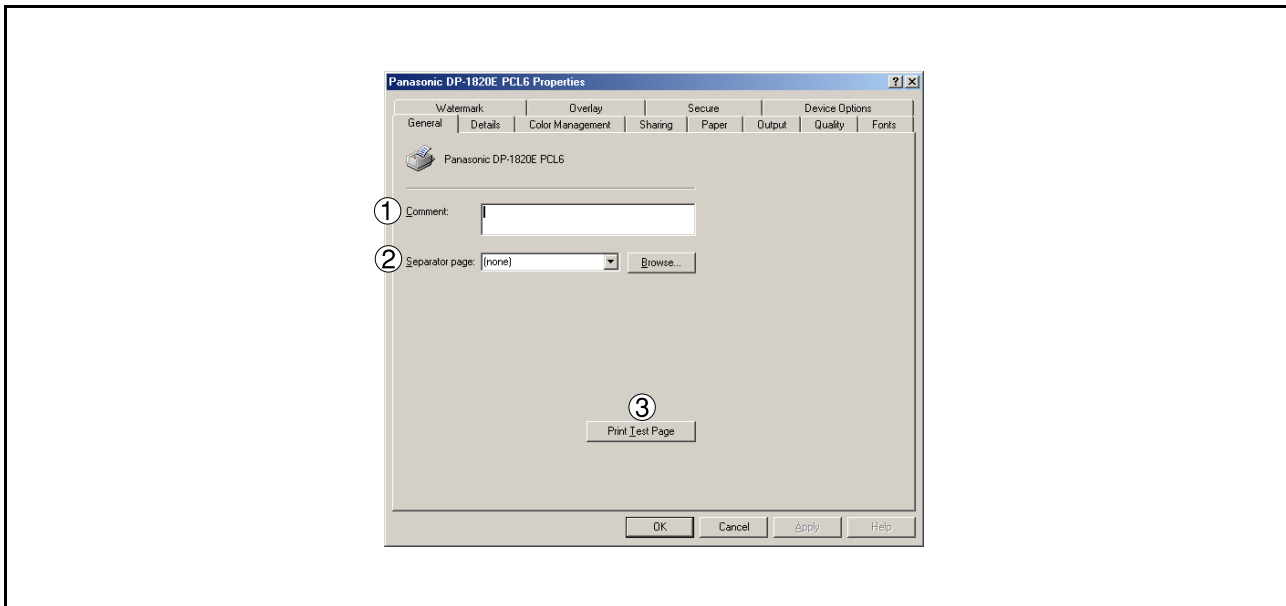
The following printer properties dialog box appears.



Configuring the Printer Driver Settings

Windows 98/Windows Me

General Tab



1. **Comment**

Enter comments regarding the properties, if any.

If another user sets up this printer on his or her computer when sharing the printer, the comment specified here will also appear on that computer. However, the comment displayed for an existing user will remain unchanged even if this comment is modified later.

2. **Separator page**

This feature does not function properly on your machine. We recommend that you do not use this feature.

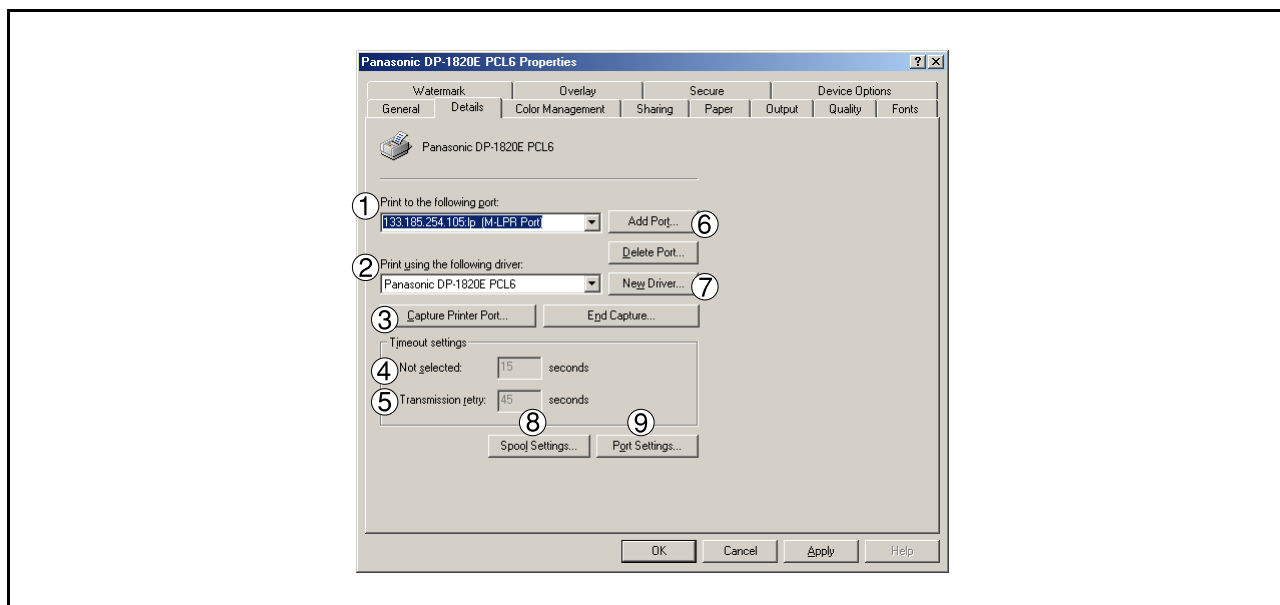
3. **Print Test Page** button

Prints a test page. This allows the user to verify if the printer is installed properly.

Configuring the Printer Driver Settings

Windows 98/Windows Me

Details Tab



1. Print to the following port

Displays either the port where the printer is connected or the path to the network printer.

To change the printing destination, either select the printing destination port from the list or enter the network path here.

2. Print using the following driver

Displays the type of the printer driver. Specify the printer being used or a printer model which can be emulated with the printer being used.

3. / button

Assigns a local port to the network connected printer or cancels a local port assigned to the network printer.

4. Timeout settings - Not selected

Specify the amount of time (in seconds) allowed to elapse before the printer comes online. If the printer is not online within this duration, an error message will be displayed.

5. Timeout settings - Transmission retry

Specify the amount of time (in seconds) allowed to elapse before the printer is ready for printing. If the printer is not ready for printing within this duration, an error message will be displayed.

Increase this value if a timeout error occurs when printing a large document.

6. / button

Adds/deletes a new port or a new network path.

7. button

Updates or modifies the printer driver.

Configuring the Printer Driver Settings

Windows 98/Windows Me

8.  **button**

Specify the method of sending (spooling) documents from the program to the printer.

• **Spool Data Format**

Select spool data type (EMF format or RAW format). Specifying RAW format results in a longer time elapsing before an application becomes operational after printing from it.

Note: Spooling by EMF format (enhanced metafile compression) may cause the following problems on some application software.

- 1) Printing result is different from the screen display.
- 2) Printing requires excessive time.

• **Enable bidirectional support**

This setting enables reception of configuration data and status data from the printer.

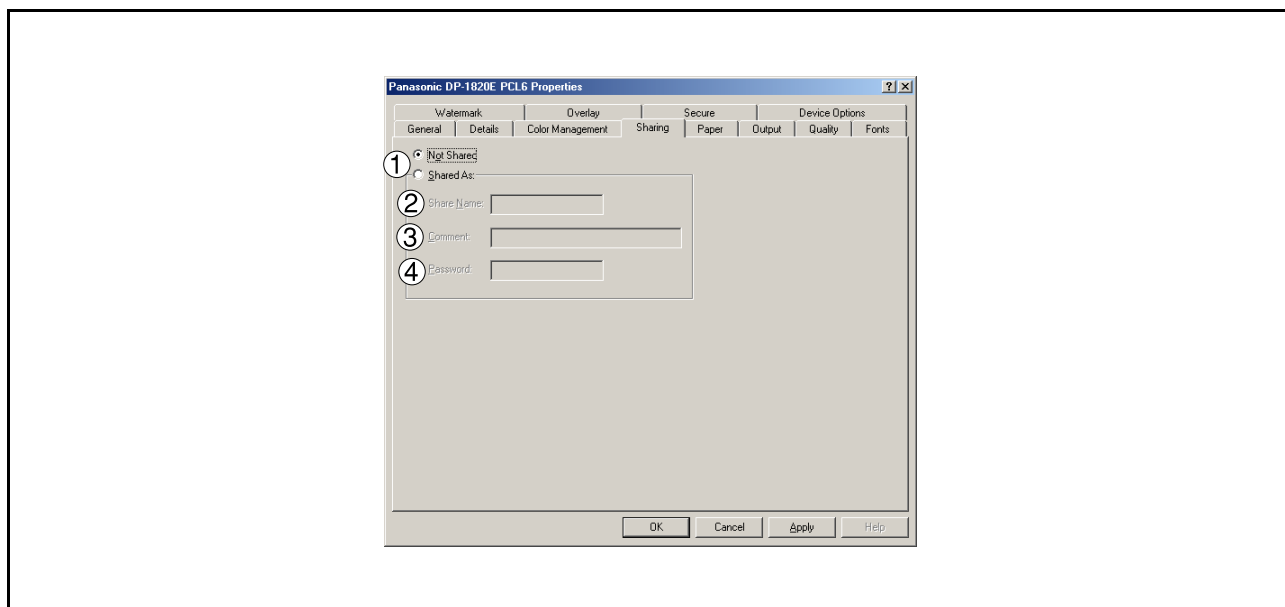
9.  **button**

Modifies printer port settings.

Configuring the Printer Driver Settings

Windows 98/Windows Me

Sharing Tab



1. Not Shared/Shared As

Select whether to display or share this printer with other computers.

2. Share Name

Specify the name of the shared printer. The displayed name can be used as is or a new name may be entered. The name specified here will be displayed when other users view information about the printer on the network.

3. Comment

You can enter comments regarding a shared printer (such as the type of printer and the location where it is installed). When other users view information about the printer on the network, the comment specified here will be displayed.

4. Password

Specify the password required when other users connect to this printer.
Leave the box blank in order not to use any password.

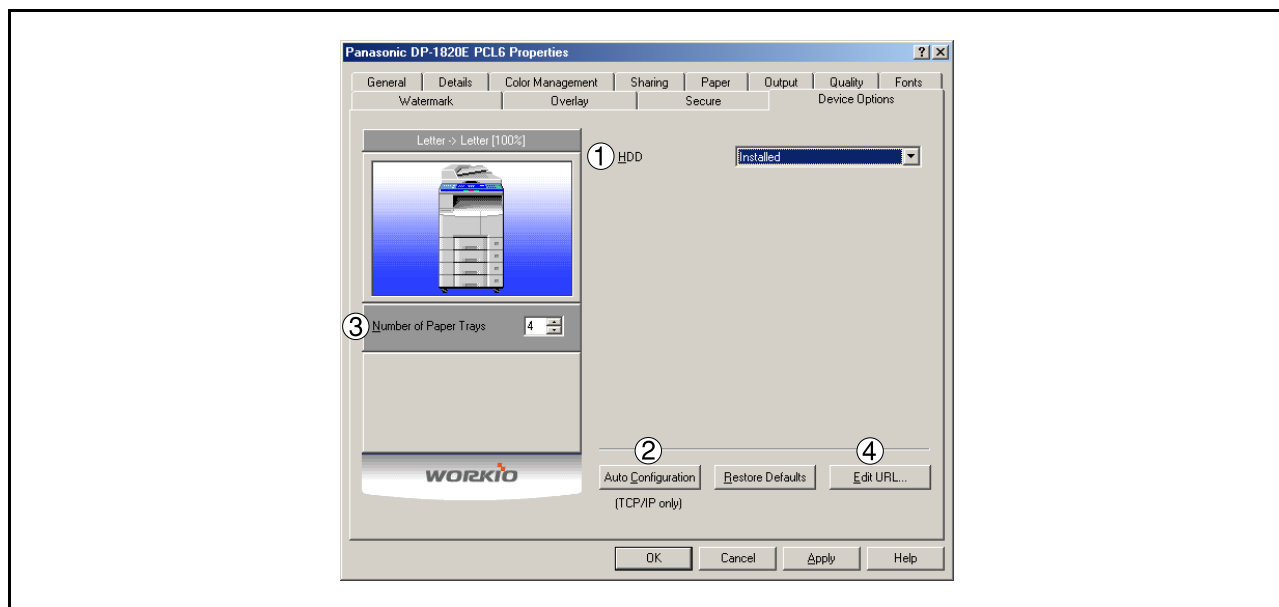
NOTE

1. **Sharing Tab** in property dialog box is not displayed unless printer sharing has been specified.

Configuring the Printer Driver Settings

Windows 98/Windows Me

Device Options Tab



1. **HDD**

Select **Installed** if the HDD Unit is installed.

2. **Auto Configuration** button

When your machine is connected to the network (TCP/IP), click this button to set the Options Configuration automatically.

3. **Number of Paper Trays**

Select the number of available paper trays if optional Paper Feed Module(s) are installed.

4. **Edit URL...** button (For USA models only)

Edit the URL address that will be displayed when clicking the **Support Contacts (W)...** button of the Paper Tab (see page 64).

Continued on the next page...

Configuring the Printer Driver Settings

Windows 98/Windows Me

URL Support Information

URL 1 Title: Support

URL 1:

Contact 1:

URL 2 Title: Supplies

URL 2:

Contact 2:

URL 3 Title: Sales

URL 3:

Contact 3:

URL 4 Title: Network Support

URL 4:

Contact 4:

OK Cancel

URL Title

Enter an applicable URL title.

URL

Enter the URL address to be associated with the

button of the Paper Tab.

Contact

Enter applicable contact information
(i.e.: The email address of the contact person)

NOTE

1. **Device Options** Tab specifies device-specific settings and settings of optional devices. Make sure that the **Device Option Tab** is set properly before printing a document. Otherwise, printing problems may occur.

Configuring the Printer Driver Settings

Windows 98/Windows Me

Paper/Output/Quality/Fonts/Watermark/Overlay/Secure Tab

Refer to All Windows Common Settings (see pages 63 - 73).

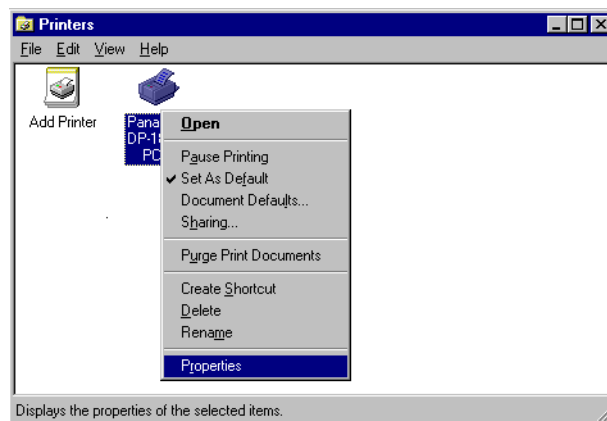
Configuring the Printer Driver Settings

Windows NT 4.0 (Administrator)

To change the printer settings, open the dialog box for the printer properties by performing the following steps.

- 1** Logon to the computer/network using an account with administrator rights. (See Note 1)
- 2** Click the **Start** button, select **Settings**, and then click the **Printers** icon.
- 3** Right-click on the desired printer icon in the **Printers** folder, and select **Properties** in the pop-up menu.

The printer properties dialog box appears.



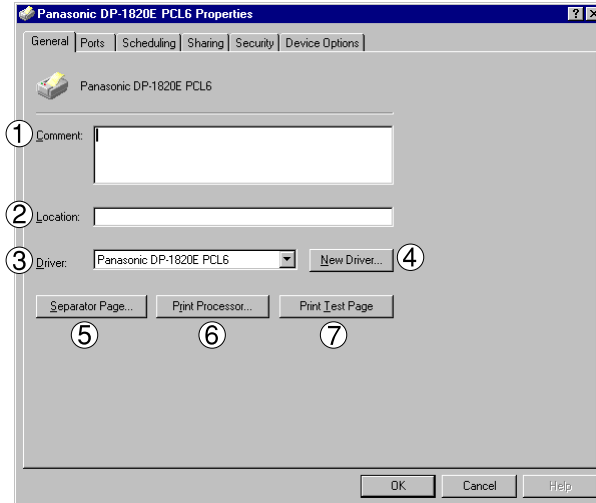
NOTE

1. In Windows NT 4.0, setting the properties depends on the logon account. This section describes properties to be specified by the administrator (system manager). See "Configuring the Printer Driver Settings (User)" for details on user properties. (See page 52)

Configuring the Printer Driver Settings

Windows NT 4.0 (Administrator)

General Tab



1. **Comment**

Enter comments regarding the properties, if any.

If another user sets up this printer on his or her computer when sharing the printer, the comment specified here will also appear on that computer. However, the comment displayed for an existing user will remain unchanged even if this comment is modified later.

2. **Location**

Specifies the printer location.

3. **Driver**

Displays the printer driver type. Specify the printer being used or a printer model that can be emulated with the printer being used.

4. **New Driver...** button

Updates or modifies the printer driver.

5. **Separator Page...** button

This feature does not function properly on your machine. We recommend that you do not use this feature.

6. **Print Processor...** button

Specify the processor to be used for printing (Print Processor) and the data type (Default Data type).

The processor and data type affect the manner in which the printer functions in Windows NT. Normally they do not need to be modified. However, modification might be necessary when the printer is used with a special application.

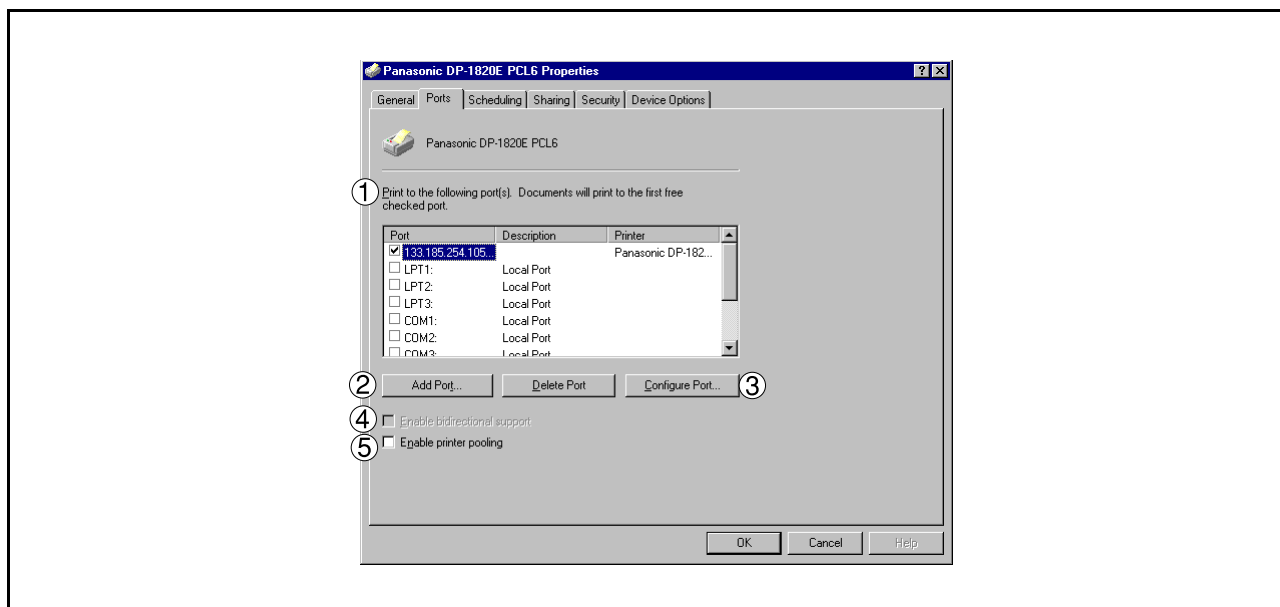
7. **Print Test Page** button

Prints a test page. This allows the user to verify if the printer is installed properly.

Configuring the Printer Driver Settings

Windows NT 4.0 (Administrator)

Ports Tab



1. Print to the following port(s)

Displays a list of available ports for printing (Port), their status (Description) and printers that are connected to these ports (Printer).

2. Add Port... / Delete Port button

Adds/deletes a new port or a new network path.

3. Configure Port... button

Configures the selected port. In case of a parallel port, Transmission Retry should be specified. (See Note 1 and 2)

4. Enable bidirectional support

This setting enables reception of configuration data and status data from the printer.

5. Enable printer pooling

Printer pooling allows data sent to one logical printer to be received and printed by two or more printers. With printer pooling enabled, a transmitted printing job is output to the first printer that is ready for printing.

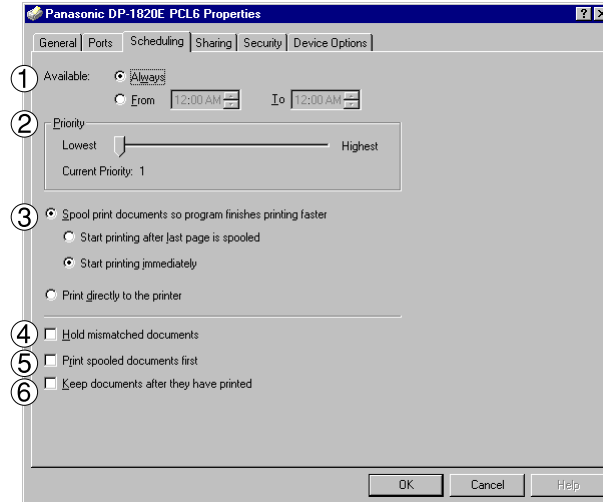
NOTE

1. Specify the waiting time (seconds) for the printer to be ready for printing. If a printer is not ready for printing after the specified time has elapsed, an error message is displayed.
2. If a timeout error occurs frequently upon printing a large size document, specify a larger value here.

Configuring the Printer Driver Settings

Windows NT 4.0 (Administrator)

Scheduling Tab



1. Available

Schedules when the printer is available for operation. Specify operating hours when **From-To** is selected.

2. Priority

Sets printing priority. The slider allows the priority to be adjusted from 1 through 99.

3. Spool print documents... / Print directly to the printer

Specify how documents should be sent from an application to the printer.

4. Hold mismatched documents

This feature does not function properly on your machine. We recommend that you do not use this feature.

5. Print spooled documents first

Always prints spooled documents first regardless of printing priority.

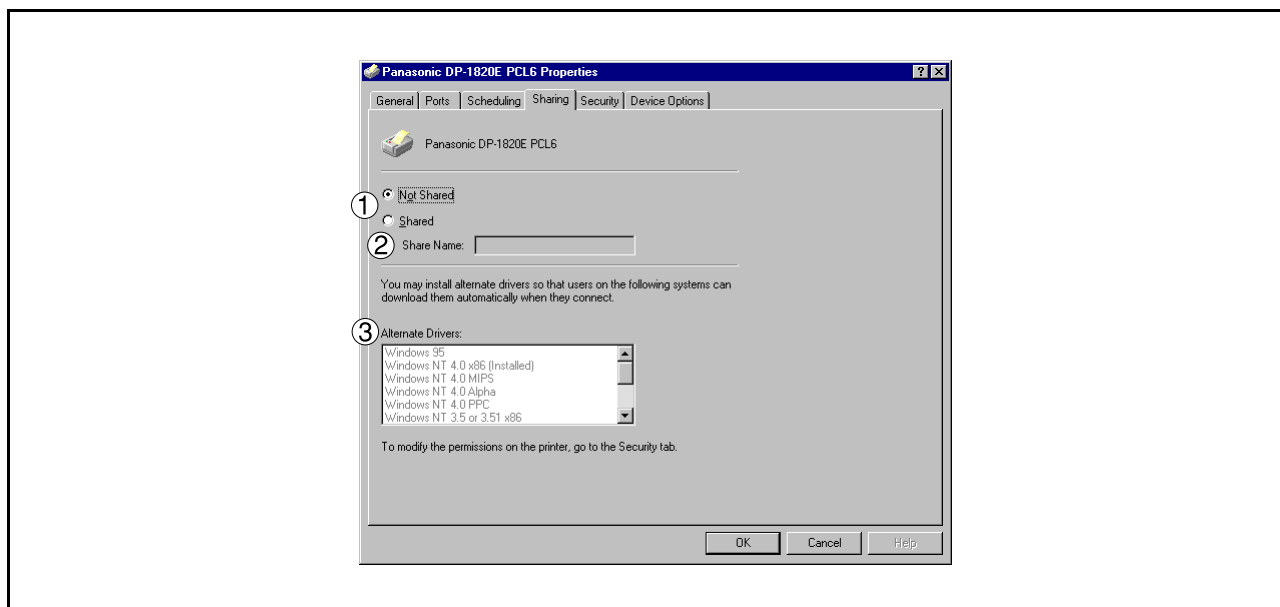
6. Keep documents after they have printed

Holds documents in the print queue even after they have been printed. These documents can be printed again directly from the queue regardless of the state the application is in.

Configuring the Printer Driver Settings

Windows NT 4.0 (Administrator)

Sharing Tab



1. Not Shared/Shared

Select whether to display or share this printer with other computers.

2. Share Name

Specify the name of the shared printer. The displayed name can be used as is or a new name may be entered. The name specified here will be displayed when other users view information about the printer on the network.

3. Alternate Drivers (See Note 1)

Allows other operating systems' printer drivers to be loaded. When users of these operating systems connect to the printer, the printer driver is automatically loaded.

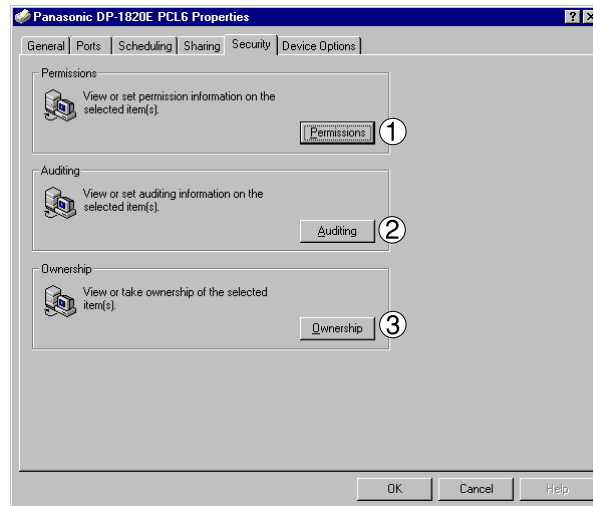
NOTE

1. When sharing a printer on the network, the print driver needs to be installed on the print server only; other computers will automatically copy and use that driver. For this reason, the print server must be ready with printer drivers for all the operating systems of all the computers that will be sharing the printer.

Configuring the Printer Driver Settings

Windows NT 4.0 (Administrator)

Security Tab



1. **Permissions button**
Set printer access privileges.
2. **Auditing button**
Displays the users who have used this printer and how they used it.
3. **Ownership button**
Set the ownership of the printer.

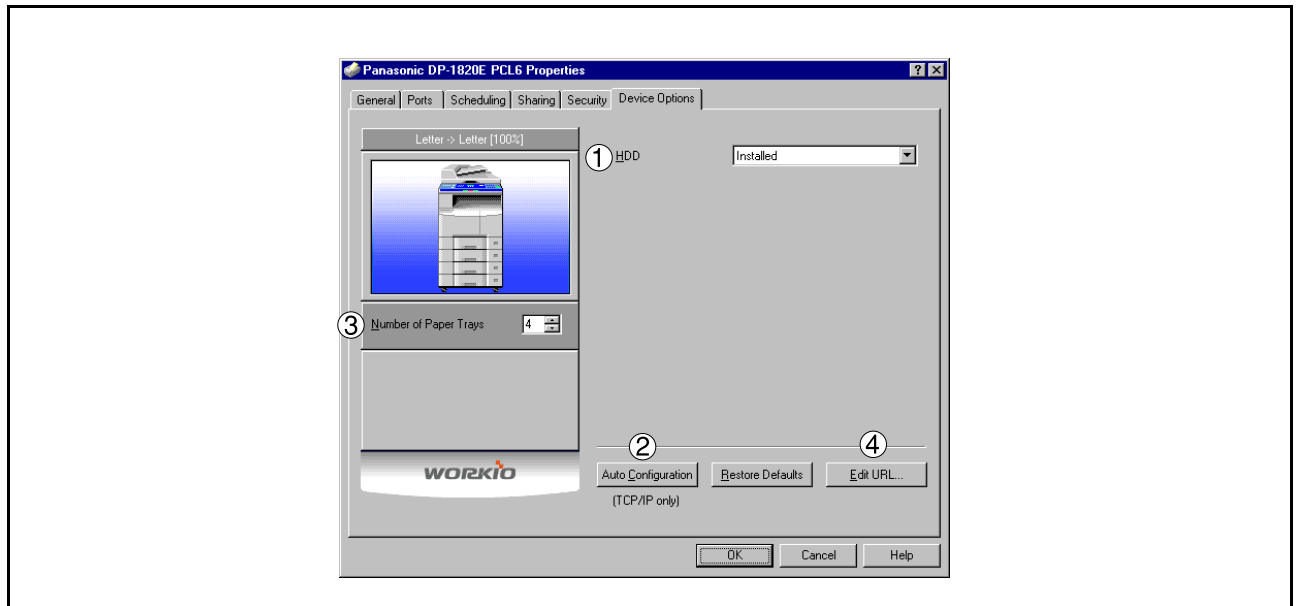
NOTE

1. In order to utilize these features, first you need to select Audit... from User Manager's Policies and enable File and Object Access in the Audit Policy dialog box.

Configuring the Printer Driver Settings

Windows NT 4.0 (Administrator)

Device Options Tab



1. **HDD**
Select **Installed** if the HDD Unit is installed.
2. **Auto Configuration** button
When your machine is connected to the network (TCP/IP), click this button to set the Options Configuration automatically.
3. **Number of Paper Trays**
Select the number of available paper trays if optional Paper Feed Module(s) are installed.
4. **Edit URL...** button (For USA models only)
Edit the URL address that will be displayed when clicking the **Support Contacts (W)...** button of the Paper Tab (see page 64).

Configuring the Printer Driver Settings

Windows NT 4.0 (Administrator)

URL Support Information

URL 1 Title: Support

URL 1:

Contact 1:

URL 2 Title: Supplies

URL 2:

Contact 2:

URL 3 Title: Sales

URL 3:

Contact 3:

URL 4 Title: Network Support

URL 4:

Contact 4:

OK Cancel

URL Title

Enter an applicable URL title.

URL

Enter the URL address to be associated with the

button of the Paper Tab.

Contact

Enter applicable contact information

(i.e.: The email address of the contact person)


NOTE

1. **Device Options** Tab specifies device-specific settings and settings of optional devices. Make sure that the **Device Option Tab** is set properly before printing a document. Otherwise, printing problems may occur.

Configuring the Printer Driver Settings

Windows NT 4.0 (User)

To change the printer settings, open the dialog box for the printer properties by performing the following steps.

- 1** Select **Print** in the **File** menu of the application.
- 2** Select the printer model in the name list box.
- 3** Click the  button in the **Print** dialog box.
- 4** The printer properties dialog box appears. Click the desired tabs of the dialog box and specify the properties.
(See Note 1)
(See pages 63 - 73)

NOTE

1. In Windows NT 4.0, setting properties depends on the logon account. This section describes properties to be specified by a user, upon executing a print operation in an application. See "Configuring the Printer Driver Settings (Administrator)" for details on administrator properties. (See page 44)

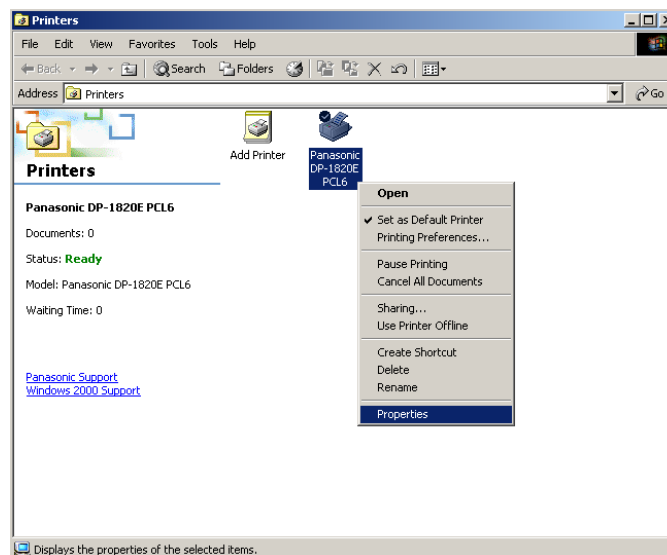
Configuring the Printer Driver Settings

Windows 2000/Windows XP/Windows Server 2003 (Administrator)

To change the printer settings, open the dialog box for the printer properties by performing the following steps.

- 1** Logon to the computer/network using an account with administrator rights.
- 2** Click the **Start** button, select **Settings**, and then click the **Printers** icon.
- 3** Right-click on the desired printer icon in the **Printers** folder, and select **Properties** in the pop-up menu.

The following printer properties dialog box appears.
(See Note 1)



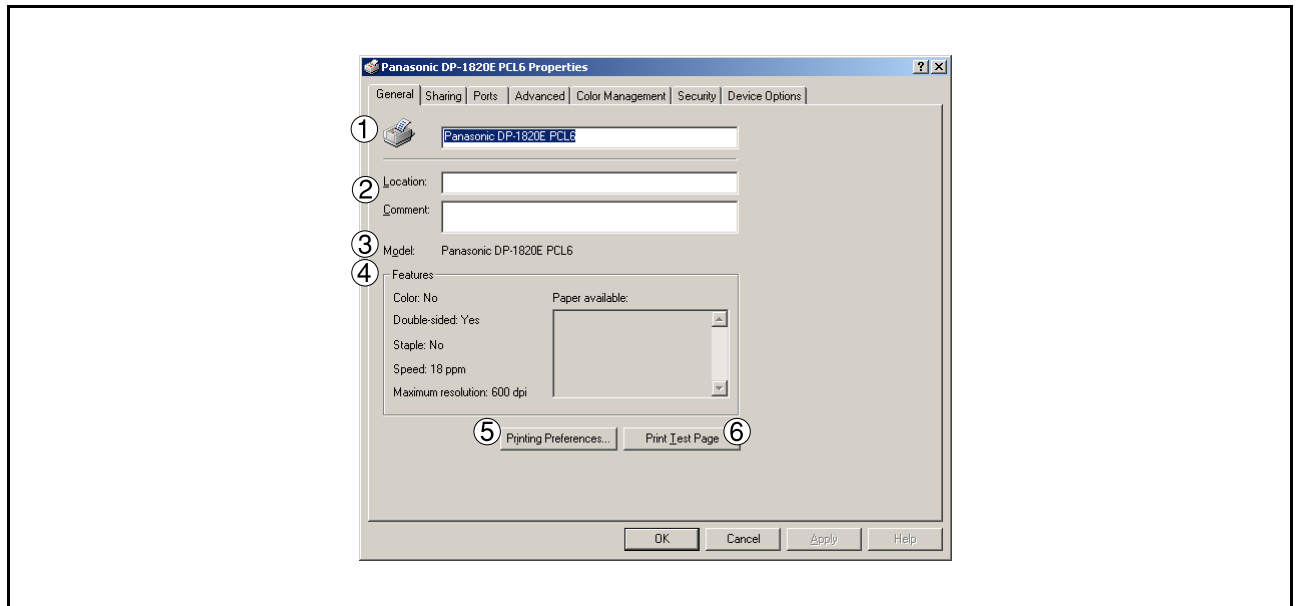
NOTE

1. In Windows 2000/Windows XP/Windows Server 2003, setting the properties depends on the logon account. This section describes properties to be specified by the administrator (system manager). See "Configuring the Printer Driver Settings" for details on user properties. (See page 62)

Configuring the Printer Driver Settings

Windows 2000/Windows XP/Windows Server 2003 (Administrator)

General Tab



1. Printer Name

Name of the printer specified upon installation is displayed.

2. Location and Comment

Enter a comment about the location of the printer installation and information about the printer.

If a printer is shared, the location and comments specified in this field appear when another user sets up this printer on his/her computer. After completion of setup, however, changing this comment does not update the location and comment appearing on users PCs.

3. Model

Model name of the printer is displayed.

4. Features

Functions and settings of the printer are displayed.

5. Printing Preferences... button

Changes properties (print settings) specifiable for each user.

Refer to "Configuring the Printer Driver Settings (User)" for details on settings (see page 62).

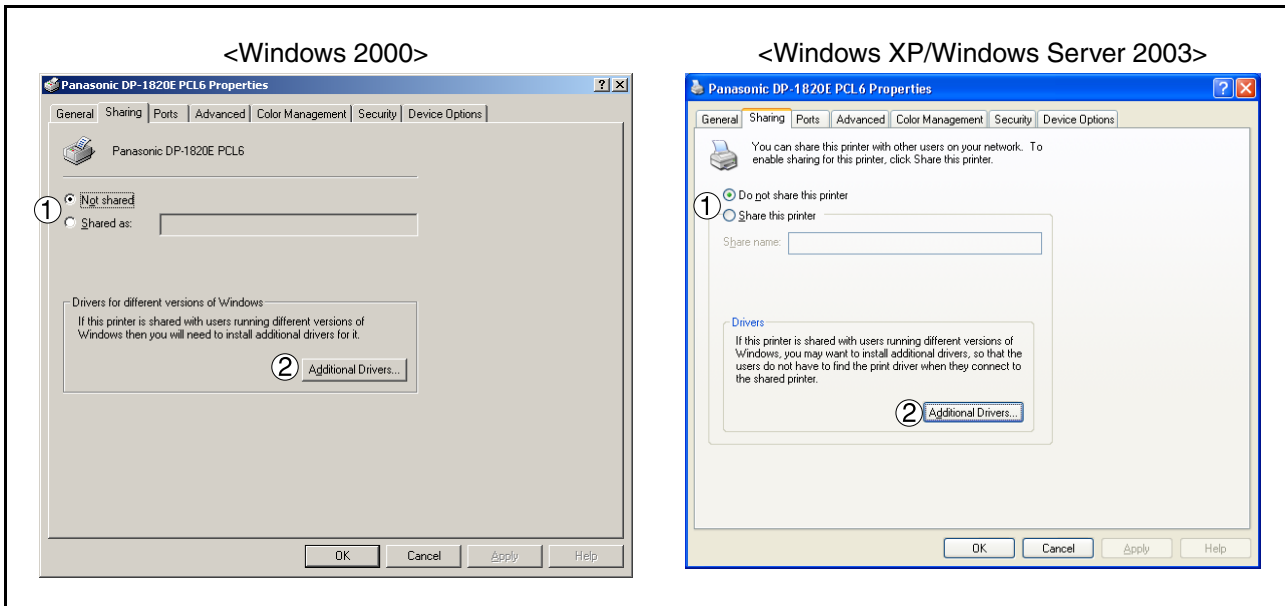
6. Print Test Page button

Prints a test page. This allows the user to verify if the printer is installed properly.

Configuring the Printer Driver Settings

Windows 2000/Windows XP/Windows Server 2003 (Administrator)

Sharing Tab



1. Not shared/Shared as (Do not share this printer/Share this printer)

Specify if this printer is displayed or shared with other computers.

For sharing a printer, specify the share name of a printer to be shared. A name specified here appears when other users view the printer information on a network.

2. Additional Drivers... button

Install additional printer drivers on the system. (See Note 1)

When users running different versions of Windows share a printer, installing additional drivers avoids the need for installing new drivers on their systems.

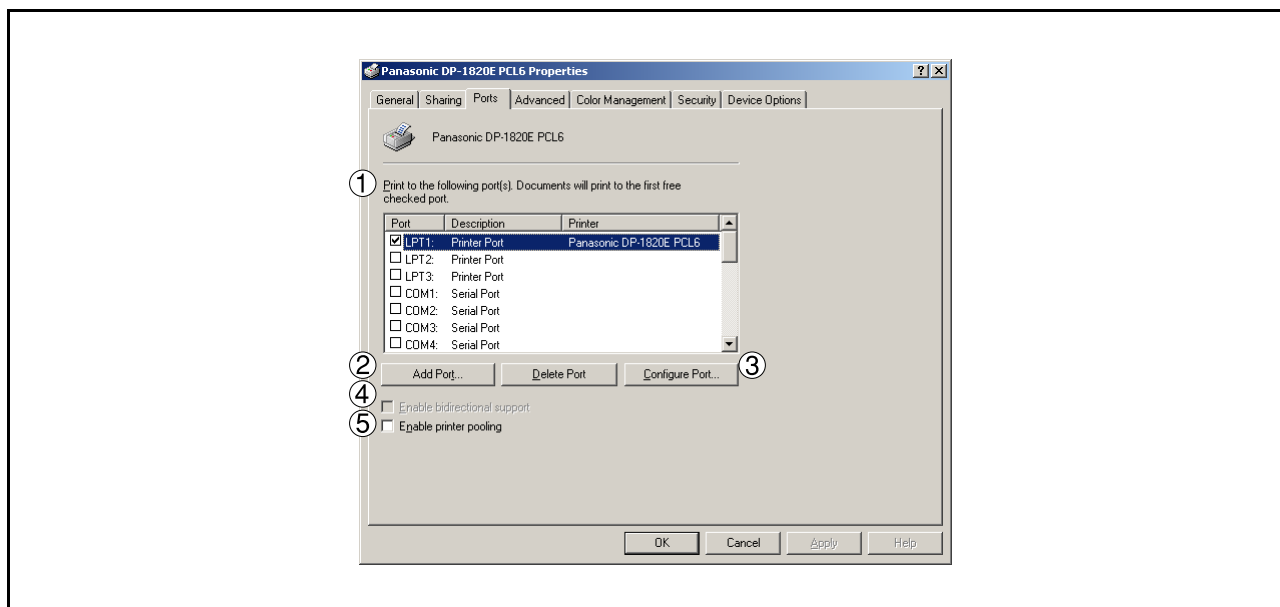
NOTE

1. When sharing a printer on the network, the print driver needs to be installed on the print server only; other computers will automatically copy and use that driver. For this reason, the print server must be ready with printer drivers for all the operating systems of all the computers that will be sharing the printer.
2. If Windows is set to disable remote access to your PC for security purpose, Windows will ask you to activate the Network Setup Wizard. Follow the messages to enable the Sharing Tab.

Configuring the Printer Driver Settings

Windows 2000/Windows XP/Windows Server 2003 (Administrator)

Ports Tab



1. Print to the following port(s)

Displays a list of ports that allow printing, their status (description), and printers connected to the ports.

2. Add Port... / Delete Port button

Adds/deletes a new port or a new network path.

3. Configure Port... button

Configure the port that is selected. On a parallel port, wait time (in seconds) for retransmission is specified. (See Notes 1 and 2)

4. Enable bidirectional support

This setting enables reception of configuration data and status data from the printer.

5. Enable printer pooling

Printer pooling allows data sent to one logical printer to be received and printed by two or more printers. With printer pooling enabled, a transmitted printing job is output to the first printer that is ready for printing.

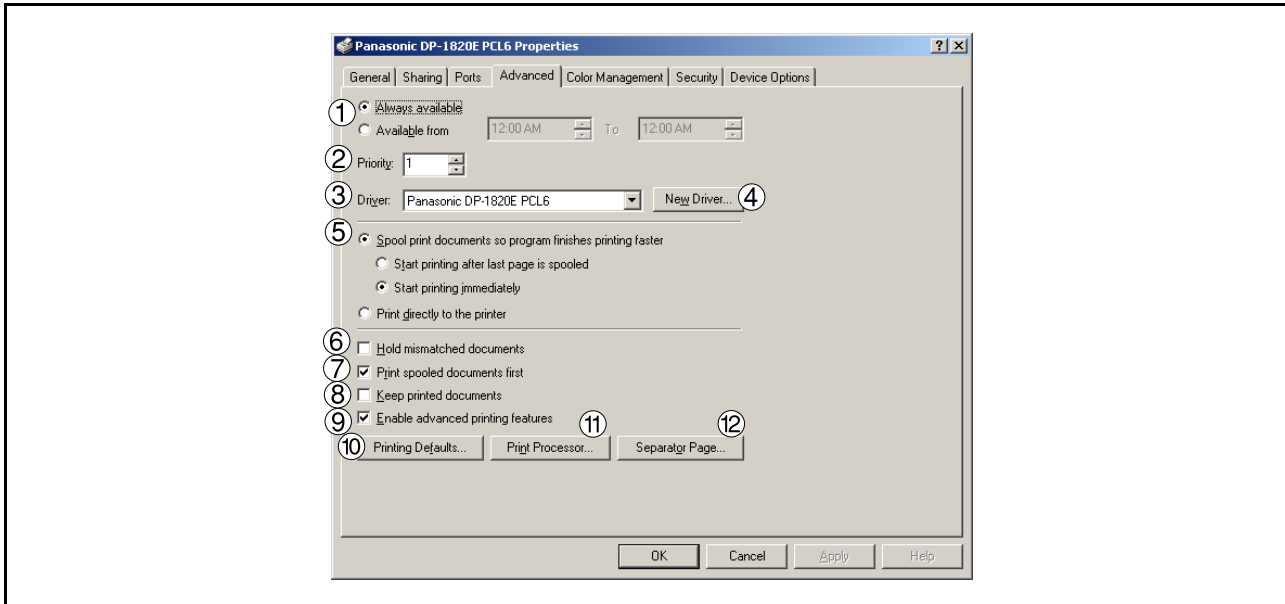
NOTE

1. Specify the waiting time (seconds) for the printer to be ready for printing. If the printer is not ready for printing after the specified time has elapsed, an error message is displayed.
2. If a timeout error occurs frequently upon printing a large size document, specify a larger value here.

Configuring the Printer Driver Settings

Windows 2000/Windows XP/Windows Server 2003 (Administrator)

Advanced Tab



1. **Always available/Available from**

Specify the operating schedule for a printer. Selecting **Available from** allows specifying an available operation time.

2. **Priority**

Specify the priority in printing. Priority is adjustable from 1 to 99. Documents of higher priority are printed before those of lower priority.

3. **Driver**

Displays the printer driver type. Specify the printer being used or a printer model that can be emulated with the printer being used.

4. **New Driver...** button

Updates or modifies the printer driver.

5. **Spool print documents so program finishes printing faster**

Specify the method of sending a document from the program to the printer.

6. **Hold mismatched documents**

This feature does not function properly on your machine. We recommend that you do not use this feature.

7. **Print spooled documents first**

Always prints spooled documents first regardless of printing priority.

8. **Keep printed documents**

After printing, documents are kept in the queue. The documents are allowed to be reprinted directly from the queue regardless of the status of an application.

Continued on the next page...

Configuring the Printer Driver Settings

Windows 2000/Windows XP/Windows Server 2003 (Administrator)

9. **Enable advanced printing features**

Enables advanced printing features. Optional printer features (page ordering, booklet printing, numbering on sheets) are enabled. These features can be disabled if a problem occurs due to incompatibility. Disabling the features may also disable the printing options.

10. **button**

Specifies standard (default) values for the properties (print settings) specifiable for each user. If a local printer is shared, the settings here are used as printing defaults for other users.

Refer to "Configuring the Printer Driver Settings (User)" for detailed settings. (See page 62)

11. **button**

Specify a print processor and data type to be used for printing.

The processor and data type define operations of printers in Windows 2000/Windows XP/Windows Server 2003.

Usually no change is required in the settings. Use of a printer from some applications, however, may require changes in the settings.

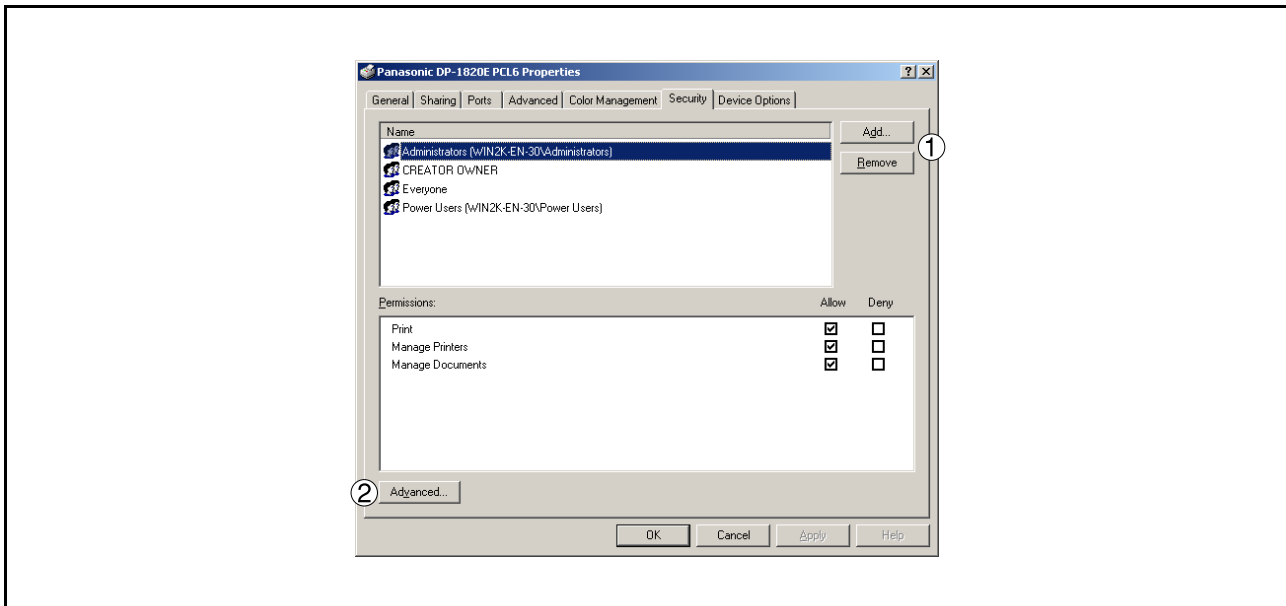
12. **button**

This feature does not function properly on your machine. We recommend that you do not use this feature.

Configuring the Printer Driver Settings

Windows 2000/Windows XP/Windows Server 2003 (Administrator)

Security Tab



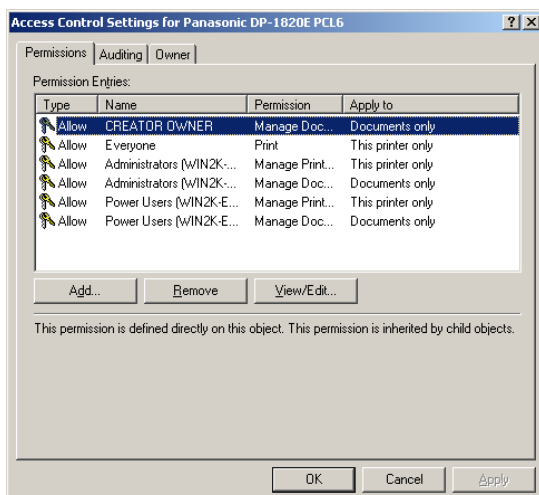
Displays a list of users and groups to whom printer access is assigned. A list of standard permissions for each group or user is displayed. Check or uncheck the checkboxes for permitting or prohibiting access. Gray checkbox indicates the permission inheritance.

1. **Add...** / **Remove** button

Add or delete a user or group from the list.

2. **Advanced...** button

Specify access to a printer, audit, and owner. (See Notes 1 and 2)



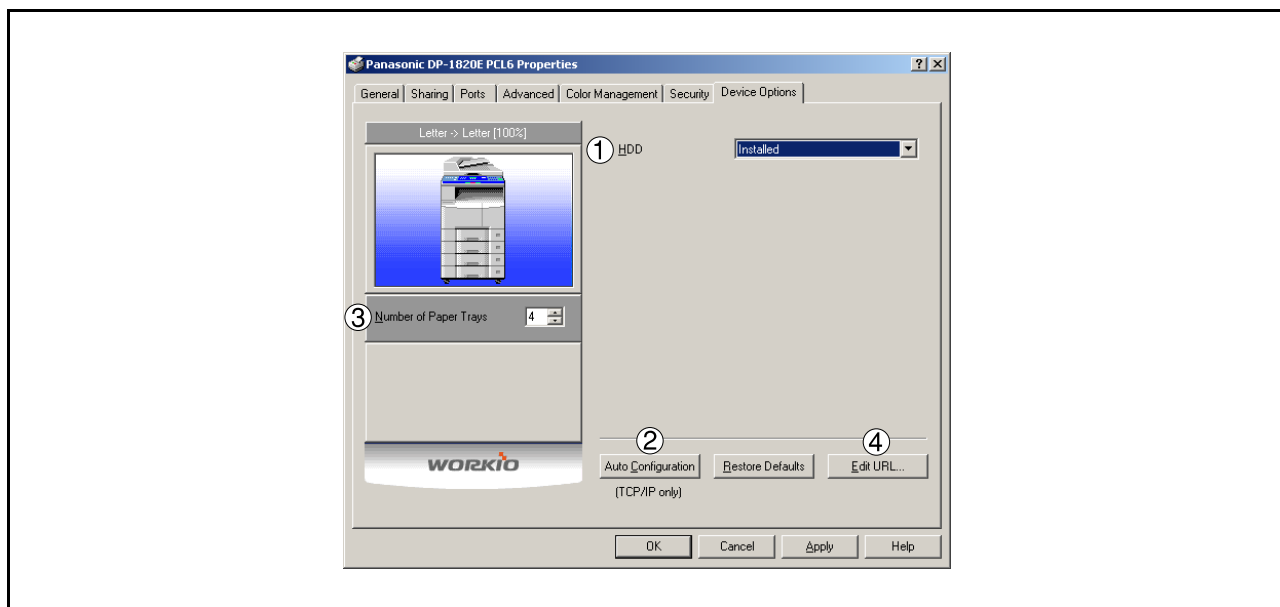
NOTE

1. Windows 2000 provides the capability of managing access to various objects (e.g. printers) by users.
2. Refer to Windows 2000 documentation for details on access permission, audit, and owner.
3. Windows XP/Windows Server 2003 users should refer to the documentation to enable the Security Tab if this tab is not shown on your PC.

Configuring the Printer Driver Settings

Windows 2000/Windows XP/Windows Server 2003 (Administrator)

Device Options Tab



1. **HDD**
Select **Installed** if the HDD Unit is installed.
2. **Auto Configuration** button
When your machine is connected to the network (TCP/IP), click this button to set the Options Configuration automatically.
3. **Number of Paper Trays**
Select the number of available paper trays if optional Paper Feed Module(s) are installed.
4. **Edit URL...** button (For USA models only)
Edit the URL address that will be displayed when clicking the **Support Contacts (W)...** button of the Paper Tab (see page 64).

Configuring the Printer Driver Settings

Windows 2000/Windows XP/Windows Server 2003 (Administrator)

URL Support Information

URL 1 Title: Support

URL 1:

Contact 1:

URL 2 Title: Supplies

URL 2:

Contact 2:

URL 3 Title: Sales

URL 3:

Contact 3:

URL 4 Title: Network Support

URL 4:

Contact 4:

OK Cancel

URL Title

Enter an applicable URL title.

URL

Enter the URL address to be associated with the

button of the Paper Tab.

Contact

Enter applicable contact information

(i.e.: The email address of the contact person)

NOTE

1. **Device Options** Tab specifies device-specific settings and settings of optional devices. Make sure that the **Device Option Tab** is set properly before printing a document. Otherwise, printing problems may occur.

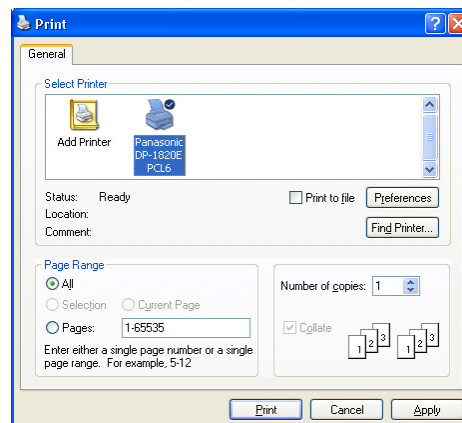
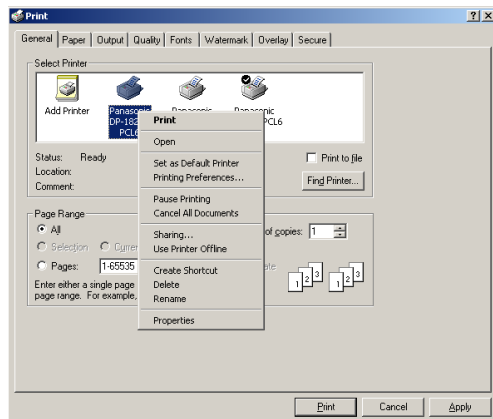
Configuring the Printer Driver Settings

Windows 2000/Windows XP/Windows Server 2003 (User)

To change the printer settings, open the printer settings dialog box by performing the steps below:

1

Select **Print** in the **File** menu of the application.



2

Select the printer model in the name list box.

3

Right-click on the desired printer icon and select the **Properties...** menu or click the **Preferences** button in the **Print** dialog box.

4

The printer properties dialog box appears. Click the desired tabs of the dialog box and specify the properties.
(See Note 1)
(See pages 63 - 73)

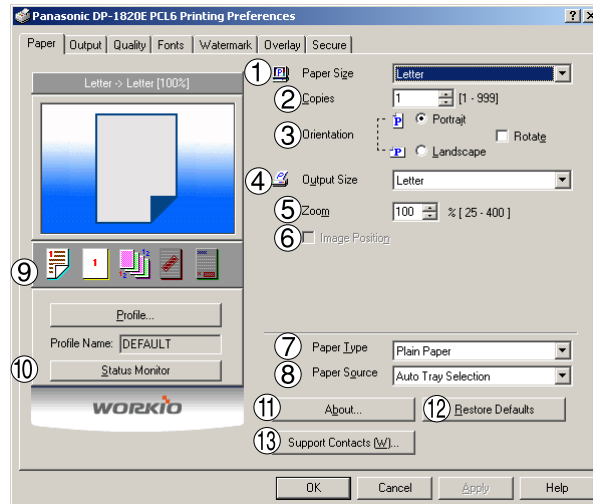
NOTE

1. In Windows 2000/Windows XP/Windows Server 2003, setting the properties depends on the logon accounts. This section describes properties to be specified by a user, upon executing a print operation in an application. See "Configuring the Printer Driver Settings (Administrator)" for details on administrator (system manager) properties. (See page 53)

Configuring the Printer Driver Settings

All Windows Common Settings

Paper Tab



1. **Paper Size**
Select a document size.
2. **Copies (1-999)**
Specify the number of copies to be printed. If the number of copies to be printed can be specified within the application, indicate one copy here and specify the number of copies in the Print dialog box of the application.
3. **Orientation**
Specifies how the document is positioned on the page. Portrait orients the print vertically. Landscape orients the print horizontally. If available, Rotated Landscape rotates the paper 90 degrees counterclockwise.
4. **Output Size**
Specifies the paper size to be used. The various paper sizes listed match those supported by your printer.
5. **Zoom (25-400%)**
Specify an enlargement or reduction percentage when printing documents. If enlargement/reduction can be set within the application, indicate 100% here and specify the enlargement/reduction percentage in the Print dialog box of the application.
Note:
If the **Resolution** on the Quality Tab is set to **600 dpi** or **1200 dpi**, the zoom ratio is changed depending on the paper size.
Legal : 25 - 390%
Others : 25 - 400%
6. **Image Position**
Specify the image position when setting the zoom ratio.
7. **Paper Type**
Select the Paper Type you want to use.

Continued on the next page...

Configuring the Printer Driver Settings

All Windows Common Settings

8. Paper Source

Specify where the paper you want to use is located in the device. If you choose **Auto Tray Selection**, the printer driver will automatically select an appropriate tray according to the Paper Size selected.

- Note:**
1. If no paper size match is found, the printer driver will select Tray 1. (DP-180/190)
 2. If no paper size match is found, the printer driver will select the Bypass Tray. (DP-1520P/1820P/1820E)
 3. 8K and 16K size paper is available if the paper is loaded in the Tray 1. (DP-1520P/1820P/1820E Chinese models only)

4. Print Properties Status Icons

Show the current selections for the following properties.

- Paper Style (Output Tab)
- N in 1 (Output Tab)
- Sort (Output Tab)
- Watermark
- Overlay

5. button

Recalls the Network Status Monitor.

6. button

Displays the copyright, the version of the printer driver files.

7. button

Click to restore all items in this window to the default settings.

8. button (For USA models only)

Open the **Support** window. The URL address(es) will be displayed if they were entered in the Device Options Tab. Click the button to open the Web page.

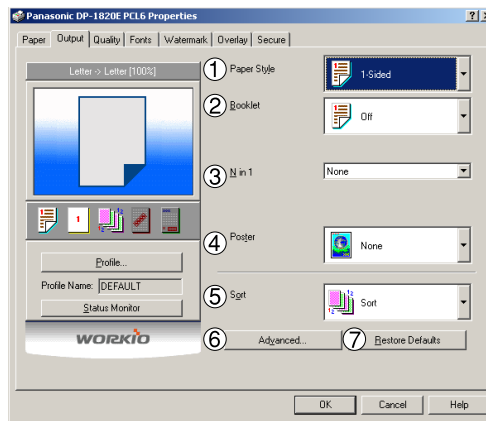
The screenshot shows a window titled "Support" with a close button (X) in the top right corner. The window contains four identical groups of input fields, each for a different support category. Each group consists of a "URL Title:" label, a text input field, a "URL:" label, a text input field, a "Contact:" label, and a text input field. To the right of each "URL:" input field is a button labeled "-> Go". At the bottom right of the window is a button labeled "OK".

Category	URL Title	URL	Contact
1	Support		
2	Supplies		
3	Sales		
4	Network Support		

Configuring the Printer Driver Settings

All Windows Common Settings

Output Tab



1. Paper Style (For DP-180/190/1820E only)

Select duplex printing for printing on both sides of the paper.

You can select the printing style from among 1-Side/2-Sided (Long Edge) /2-Sided (Long Edge Margin) / 2-Sided (Short Edge) /2-Sided (Short Edge Margin).

• Binding Direction

Select the binding side (Long Edge/Short Edge) for duplex printing.

• Binding Margin

Select the binding margin upon duplex printing. The width of the binding margin is specified on the device.

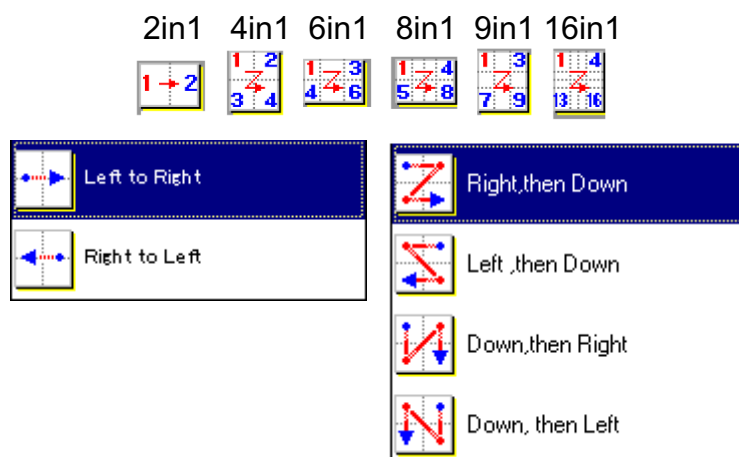
2. Booklet (For DP-180/190/1820E only)

Formats output in order so document can be folded and/or saddle stitched like a book.

3. N in 1

Specify the layout pattern for printing multiple documents on a single sheet of paper.

If you select an item other than "None," N in 1 order is displayed, allowing you to select the following patterns.



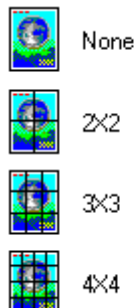
Continued on the next page...

Configuring the Printer Driver Settings

All Windows Common Settings

4. Poster

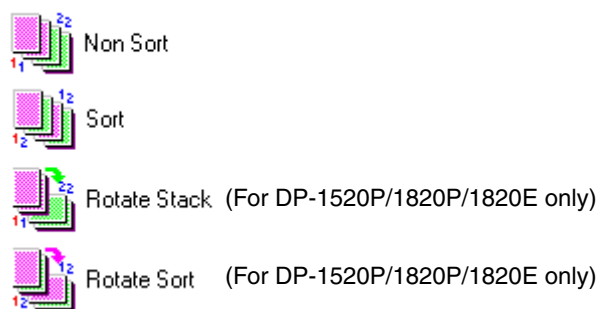
Specify the layout pattern for Poster mode printing on multiple sheets of paper.



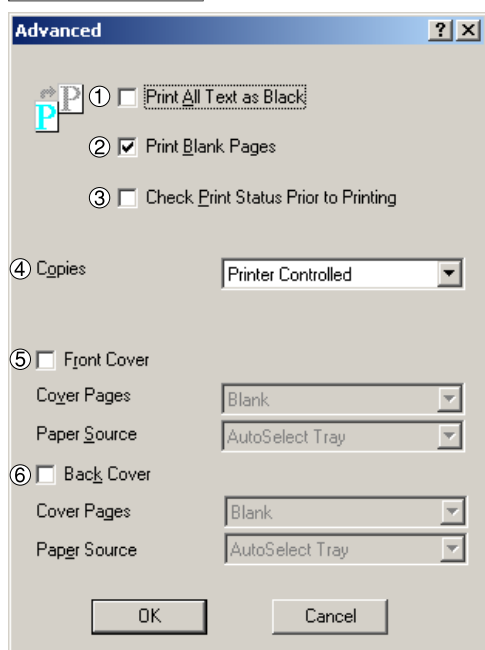
5. Sort

Select whether to Stack or Sort when printing multiple copies.

Note: Paper must be loaded into the machine in both directions when using the Rotate Stack and Rotate Sort functions (i.e. Letter and Letter-R, A4 and A4-R).



6. **Advanced** Button



1) **Print All Text as Black**

All colored text is printed as solid black

Configuring the Printer Driver Settings

All Windows Common Settings

2) **Print Blank Pages**

Select whether the blank pages are printed.

3) **Check Printer Status Prior to Printing**

Check the status of the printer connected to your network before printing the data.

4) **Copies (Printer controlled / Printer Driver controlled)**

When printing a large amount of data with sort mode, the machine might not be able to print due to lack of memory capacity.

In this case, select **Printer Driver controlled**, and sorting will be processed by the printer driver. However, this mode may take more time to print.

5) **Front Cover**

Set to insert a blank or printed page as the Front Cover. Specify where the paper you want to use is located in the device. If you choose Auto Tray Selection, the printer driver will automatically select an appropriate tray according to the Paper Size selected.

6) **Back Cover**

Set to insert a blank or printed page as the Back Cover. Specify where the paper you want to use is located in the device. If you choose Auto Tray Selection, the printer driver will automatically select an appropriate tray according to the Paper Size selected.

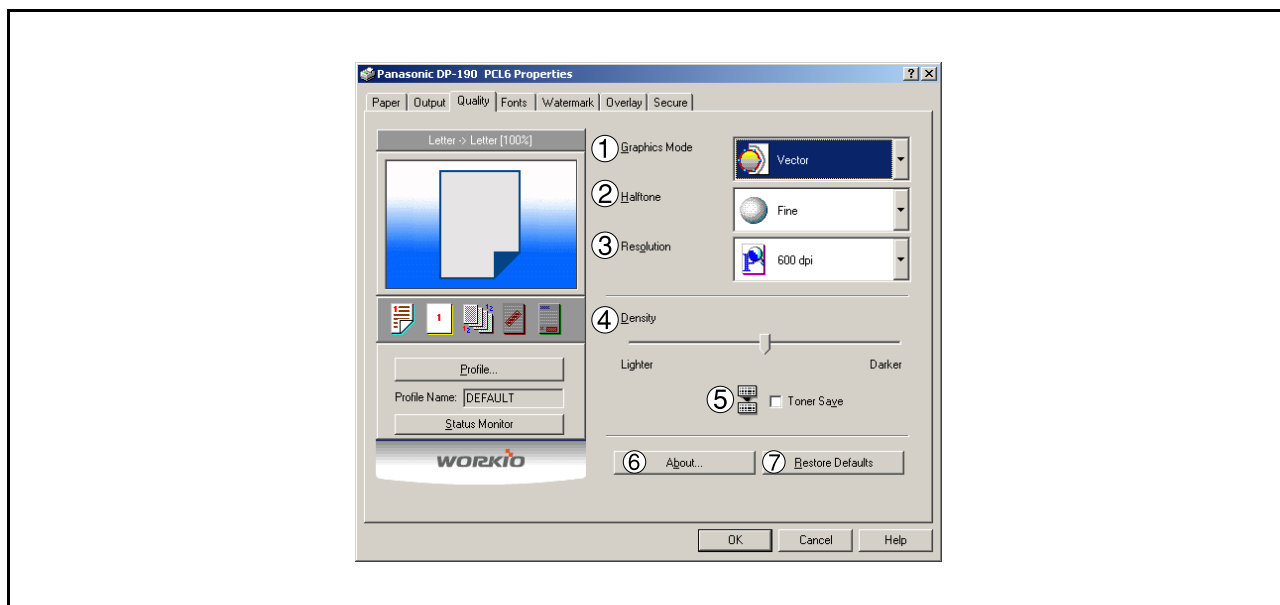
7. **Restore Defaults** button

Click to restore all items in this window to the default settings.

Configuring the Printer Driver Settings

All Windows Common Settings

Quality Tab



1. Graphics Mode

Vector

Treat line information as graphic data.

Raster

Treat all information as Bitmap data.

2. Halftone

Select Normal/Fine/Coarse.

3. Resolution

Select the print resolution (300 dpi / 600 dpi / 1200dpi Enhanced). (See Note 1)

4. Density (For DP-180/190 only)

Defines the darkness of the dots printed on the paper.

5. Toner Save (For DP-180/190 only)

This function is only available if Graphics Mode is set to "Raster". It will print using less toner, thus, saving toner consumption when you are printing many drafts prior to printing the final document.

6. **About...** button

Displays the copyright, the version of the printer driver files.

7. **Restore Defaults** button

Click to restore all items in this window to the default settings.

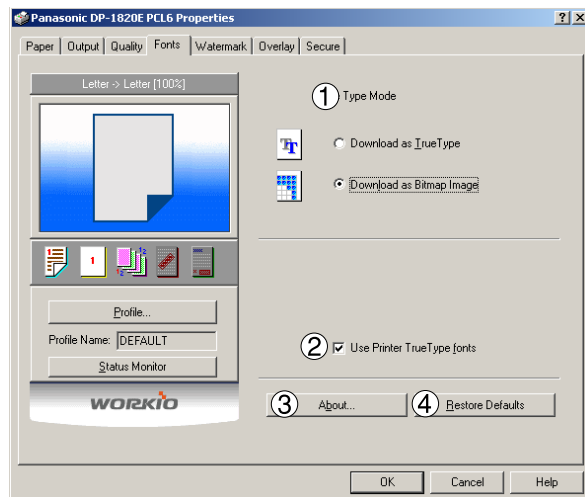
NOTE

1. dpi (dots per inch) represents the number of dots contained in one inch. The larger the value, the higher the resolution.

Configuring the Printer Driver Settings

All Windows Common Settings

Fonts Tab



1. TrueType Mode

Download PC fonts (TrueType) as bitmap Image or as TrueType font.

2. Use Printer TrueType fonts

Select whether the printer TrueType fonts are used or not.

3. **About...** button

Displays the copyright, the version of the printer driver files.

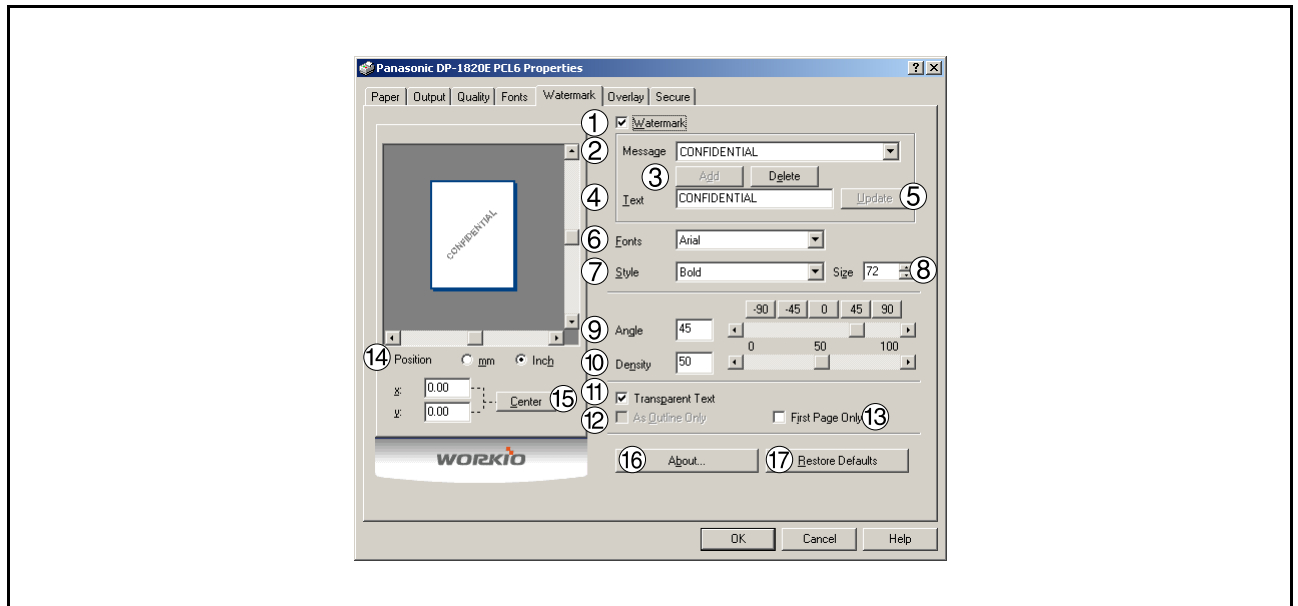
4. **Restore Defaults** button

Click to restore all items in this window to the default settings.

Configuring the Printer Driver Settings

All Windows Common Settings

Watermark Tab



1. **Watermark**
To enable the watermark feature, check Watermark.
2. **Message**
Displays the selected text. (CONFIDENTIAL, COPY, etc.)
3. **Add** **Delete** **button**
Add or delete watermark messages.
4. **Text**
Input text that you want to add or update as the watermark.
5. **Update** **button**
Update the text of the existing watermark message.
6. **Fonts**
Select the text font.
7. **Style**
Select the font style.
8. **Size**
8 - 400 point.
9. **Angle**
Select the text angle.
10. **Density**
Varies from light to dark.

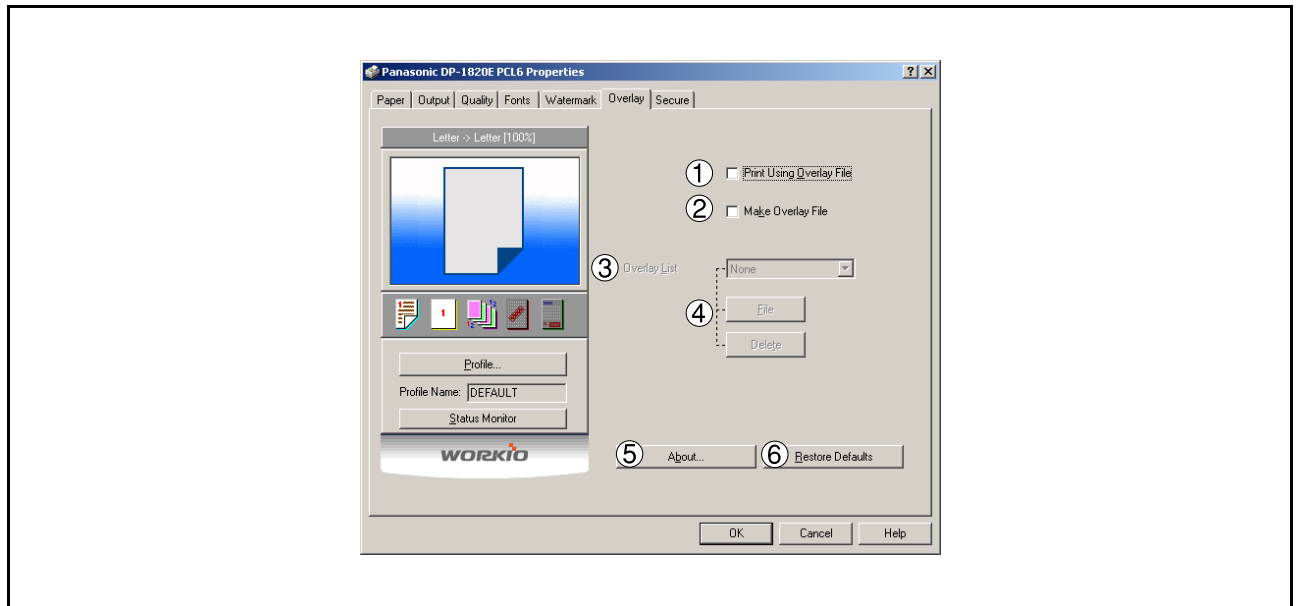
All Windows Common Settings

11. **Transparent Text**
Use watermark print as transparent text.
12. **As Outline Only**
Print the watermark character as an outlined image.
13. **First Page Only**
Use watermark only for the first page.
14. **Position**
Specify inch or metric units for adjustment.
15. **button**
Position the watermark relative to center of the document.
16. **button**
Displays the copyright, the version of the printer driver files.
17. **button**
Click to restore all items in this window to the default settings.

Configuring the Printer Driver Settings

All Windows Common Settings

Overlay Tab



1. Print Using Overlay File

Set overlay function.


2. Make Overlay File

When making an overlay file, check this box, then type a filename in the Overlay List box.

3. Overlay List

Select the file to be used for the overlay.

4. button

Click the  button to set the directory to save the overlay file.

Click the  button to delete the overlay file.

5. button

Displays the copyright, the version of the printer driver files.

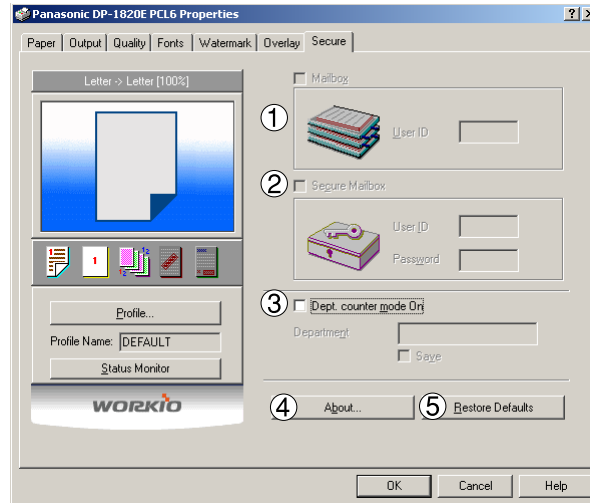
6. button

Click to restore all items in this window to the default settings.

Configuring the Printer Driver Settings

All Windows Common Settings

Secure Tab



1. Mailbox (Available if the optional Hard Disk Drive Unit (DA-HD18/HD19) is installed.)

Check this box and enter the User ID (up to 8 digits) if storing the print data into the mailbox of the machine.

Note: DA-HD18 is for DP-1520P/1820P/1820E, and DA-HD19 is for DP-180/190.

2. Secure Mailbox (Available if the optional Hard Disk Drive Unit (DA-HD18/HD19) is installed.)

Check this box, enter the User ID (up to 8 digits) and the password (4 digits) if storing the print data into the secure mailbox of the machine.

Note: DA-HD18 is for DP-1520P/1820P/1820E, and DA-HD19 is for DP-180/190.

3. Dept. counter mode On

Check this box and enter the department code if your administrator requires departmental codes in order to print.

4. About... button

Displays the copyright, the version of the printer driver files.

5. Restore Defaults button

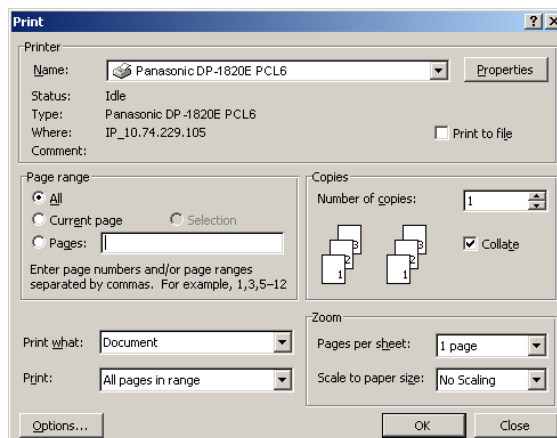
Click to restore all items in this window to the default settings.

Print Operation

Printing from Windows Applications

If the printer driver is installed properly and a printer is selected as the default printer (see Note 1) in the printer setup, printing can be accomplished from any Windows application with simple operations.

To print from most Windows applications, use the **Print...** command in the **File** menu. Selecting the **Print...** command typically displays the following Print dialog box:



After selecting the page range to be printed and the number of copies, click the **OK** button to **start** printing.

While documents are being printed, a printer icon appears in the System Tray near the clock in the bottom right hand corner of the screen. The icon disappears when printing is completed.

You may double-click the printer indicator in the system tray to open and verify the details of the print queue in the spooler.

NOTE

1. Follow the steps below to set a default printer:
 - a) Click the **Start** button and select **Printers** in the **Settings** menu.
 - b) Select the printer icon in the window and select **[Set As Default]** in popup menu by right-clicking it. Then the check mark is displayed.

Printing on Network

When sharing a printer by connecting two computers via a crossover cable or using a hub, a connection among computers must be established. (See Notes 1 and 2)

Establishing a connection among computers can be verified by displaying the connected computers in Network Neighborhood on the desktop.

The settings for printer sharing are specified by performing the following steps:

Printer Server (PC connected to a printer)

- 1** Install the printer driver on the computer to be connected to the machine.
- 2** Click the **Start** button, select **Settings**, and then click **Printers**.
- 3** Right-click on the desired printer icon and select **[Sharing...]** in the popup menu.
- 4** Select **Shared As** in the properties dialog box.
- 5** Click the button.

Upon completing this setting, the shape of the icon changes indicating that the printer is shared.

NOTE

1. Refer to the manual for the network card and Windows users' guide for connections among computers.
2. On Windows 98/Windows Me, a computer connected to a printer must be set up to allow printer sharing by performing the following operations:
 - 1) Double-click on **Network** in control panel, and then click button in the **Network Configuration** tab.
 - 2) Check **[I want to be able to allow others to print to my printer(s).]** in the File and Print Sharing dialog box.

Print Operation

Printing on Network

Remote (PC that uses another computer's printer)

- 1** Click the **Start** button, select **Settings**, and then **Printers**.
- 2** Double-click **Add Printer** in the printers folder.
The Add Printer Wizard appears.
Click the button.
- 3** Select **Network Printer**.
Click the button.
- 4** Specify the other computer's printer by entering the network path.

Then, complete the installation following the instructions of the Add Printer Wizard.

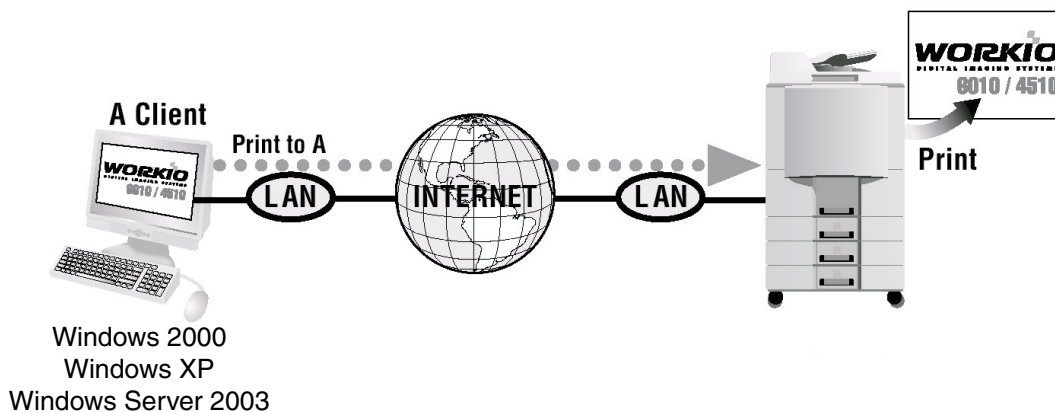
The operations above enable output from a remote computer to a printer connected to the printer server.

Internet Printing Protocol (IPP) Printing

Prints documents from a machine located in a remote area via the Internet without its access being blocked by a proxy server. This feature is only available on Windows 2000, Windows XP or Windows Server 2003.

Compatible Models

- DP-1520P/1820P/1820E with PCL Printer Module (DA-PC180) or PS Printer Module (DA-MC180)
- DP-180/190 with PCL Printer Module (DA-PC188) or PS Printer Module (DA-MC188)
- DP-2310/3010 with PCL Printer Module (DA-PC300) or PS Printer Module (DA-MC300)
- DP-3510/3520/4510/4520/6010/6020 with PCL Printer Module (DA-PC600/601) or PS Printer Module (DA-MC600/601)
- UF-9000 with PCL Printer Module (DA-PC190) or PS Printer Module (DA-MC190)



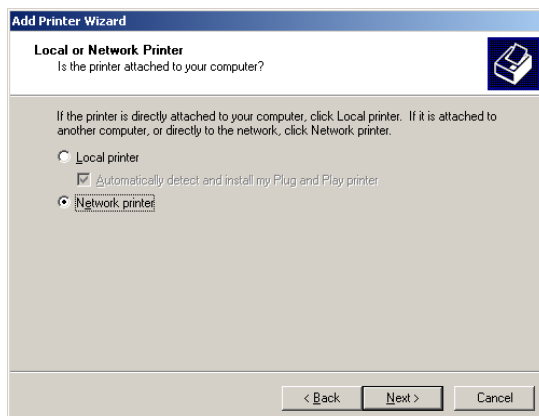
Setting the IPP Printing

1

Verify whether your PC is connected to the Internet or to the Intranet.

Open the **Add Printer Wizard**.

2



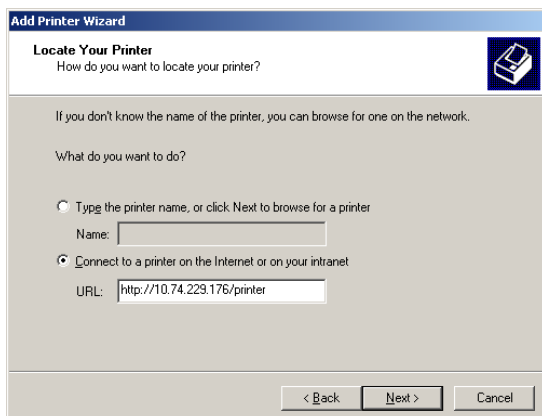
Select **Network printer** and click the **Next** button.

Continued on the next page...

Print Operation

Setting the IPP Printing

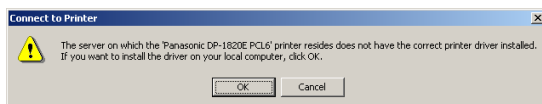
3



Select **Connect to a printer on the Internet or on your Intranet** and type the IP address of the remote machine and **/printer** in the URL window.
(e.g. http://10.74.229.176/printer)

Click the **Next** button.

4

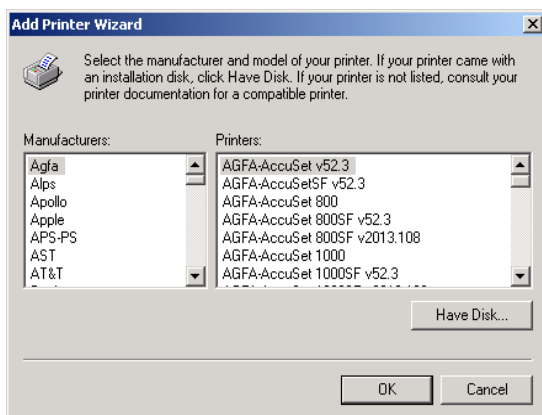


<Windows 2000 only>

Click the **OK** button if this message is shown.

If not, skip to Step 11.

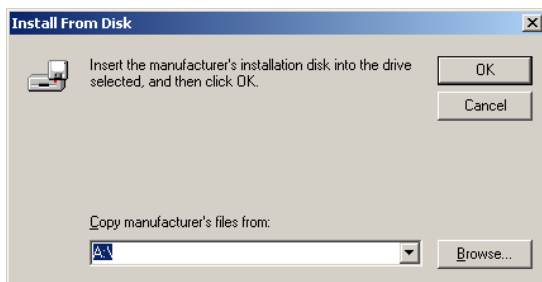
5



1. Insert the CD-ROM included with the Option.

2. Click the **Have Disk...** button.

6

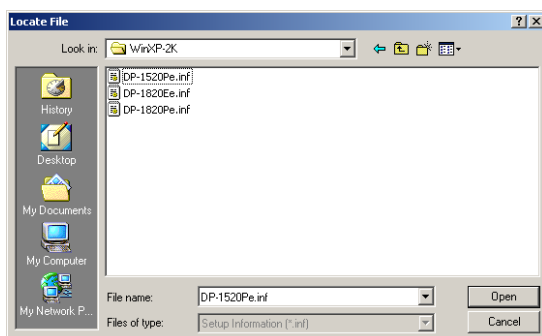


The **Install From Disk** dialogue box appears.

Click the **Browse...** button.

D:\English\PCL\Driver\WinXP-2K
(where "D" is your CD-ROM drive).

7

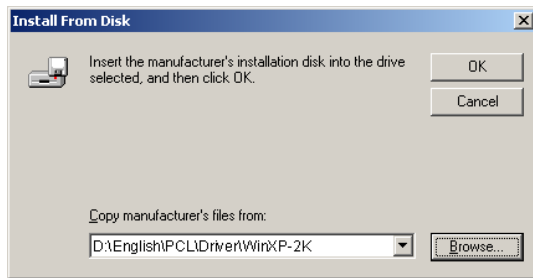


Select the remote machine.

Click the **Open** button.

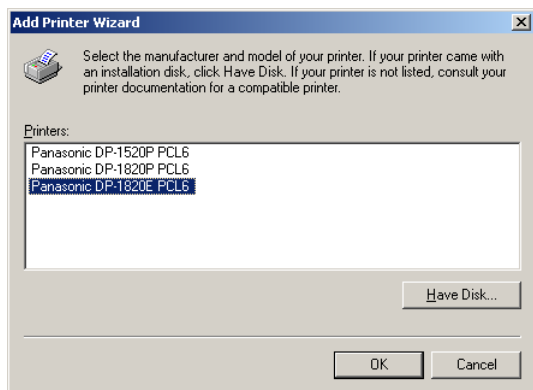
Setting the IPP Printing

8



Click the button.

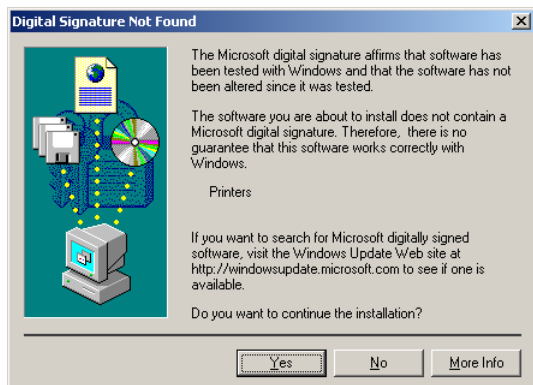
9



Select the remote machine.

Click the button.

10



<Windows 2000>

Click the button.



<Windows XP/Windows Server 2003>

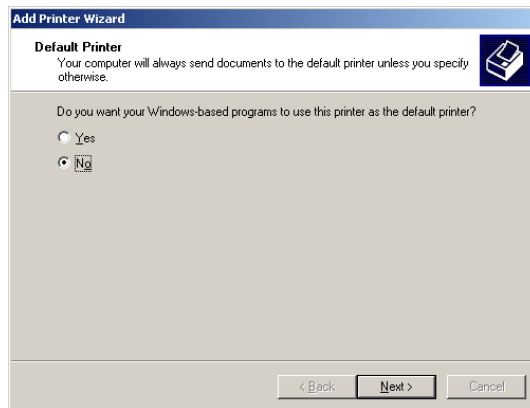
Click the button.

Continued on the next page...

Print Operation

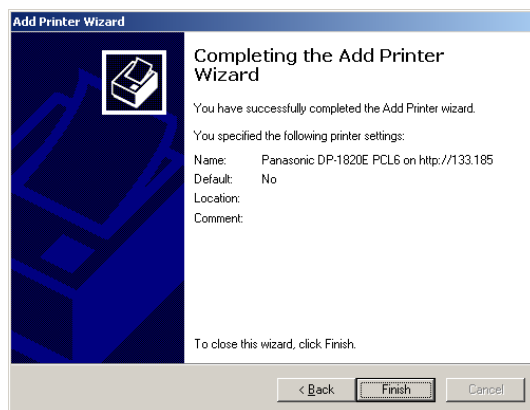
Setting the IPP Printing

11



Select **Yes** if you would like to change your current default printer and click the **Next** button.

12



Click the **Finish** button.

The IPP Printer Driver has been installed, and the Printer icon has been added to the Printer folder.

Available Paper Type and Paper Size

■ DP-1520P/1820P/1820E

Paper Type	Paper Size	Print from Paper Tray	Print from Sheet Bypass	Print from Optional Paper Trays	Print by 2-Sided Print Mode
Plain Paper	Ledger	Yes	Yes	Yes	Yes
	Letter	Yes	Yes	Yes	Yes
	Legal	Yes	Yes	Yes	Yes
	Invoice	Yes	Yes	Yes	Yes
	FLS1	Yes	Yes	Yes	Yes
	FLS2	Yes	Yes	Yes	Yes
	A3	Yes	Yes	Yes	Yes
	B4	Yes	Yes	Yes	Yes
	A4	Yes	Yes	Yes	Yes
	B5	Yes	Yes	Yes	Yes
	A5	Yes	Yes	Yes	Yes
	8K	Yes	No	No	Yes
	16K	Yes	No	No	Yes
Thick Paper	Ledger	No	Yes	No	No
	Letter	No	Yes	No	No
	Legal	No	Yes	No	No
	Invoice	No	Yes	No	No
	FLS1	No	Yes	No	No
	FLS2	No	Yes	No	No
	A3	No	Yes	No	No
	B4	No	Yes	No	No
	A4	No	Yes	No	No
	B5	No	Yes	No	No
	A5	No	Yes	No	No
	8K	No	No	No	No
	16K	No	No	No	No
Transparency	Letter	No	Yes	No	No
	A4	No	Yes	No	No
Label	Letter	No	Yes	No	No
	A4	No	Yes	No	No
Envelope	#9	No	No	No	No
	#10	No	Yes	No	No
	Monarch	No	No	No	No
	DL	No	Yes	No	No
	C5	No	No	No	No

Specifications

Available Paper Type and Paper Size

■ DP-180/190

Paper Type	Paper Size	Print from Paper Tray	Print from Sheet Bypass	Print from 2nd Paper Tray (Optional)	Print by 2-Sided Print Mode
Plain Paper	Letter	Yes	Yes	Yes	Yes
	Legal	Yes	Yes	Yes	Yes
	Invoice	No	Yes	No	No
	FLS1	No	Yes	No	No
	FLS2	No	Yes	No	No
	A4	Yes	Yes	Yes	Yes
	B5	Yes *1	Yes	Yes *1	Yes *1
	A5	Yes *1	Yes	No	No
Thick Paper	Letter	No	Yes	No	No
	Legal	No	Yes	No	No
	Invoice	No	Yes	No	No
	FLS1	No	Yes	No	No
	FLS2	No	Yes	No	No
	A4	No	Yes	No	No
	B5	No	Yes	No	No
	A5	No	Yes	No	No
Cotton Paper	Letter	Yes	Yes	No	No
	Legal	Yes	Yes	No	No
	Invoice	No	Yes	No	No
	FLS1	No	Yes	No	No
	FLS2	No	Yes	No	No
	A4	Yes	Yes	No	No
	B5	Yes *1	Yes	No	No
	A5	Yes *1	Yes	No	No
Transparency	Letter	Yes	Yes	No	No
	A4	Yes	Yes	No	No
Label	Letter	No	Yes	No	No
	A4	No	Yes	No	No
Envelope	#9	No	Yes	No	No
	#10	No	Yes	No	No
	Monarch	No	Yes	No	No
	DL	No	Yes	No	No
	C5	No	Yes	No	No

*1: For DP-180 only

Available Paper Weight and Capacity

■ DP-1520P/1820P/1820E

	Paper Type	Print from Paper Tray	Print from Sheet Bypass	Print from Optional Paper Trays	Print with 2-Sided Print Mode
Paper Weights	Plain Paper	16 –24 lb (60 – 90 g/m ²)	15 –34 lb (55 – 133 g/m ²)	16 –24 lb (60 – 90 g/m ²)	17–24 lb (64 – 90 g/m ²)
	Thick Paper	No	25 –34 lb (94 –133 g/m ²)	No	No
Paper Capacity	Plain Paper 20 lb (75 g/m ²)	550 sheets	50 sheets	550 sheets	550 sheets
	Transparency	No	10 sheets	No	No
	Label	No	10 sheets	No	No
	Envelope	No	5 sheets	No	No

■ DP-180/190

	Paper Type	Print from Paper Tray	Print from Sheet Bypass	Print from 2nd Paper Tray (Optional)
Paper Weights	Plain Paper	16 –28 lb (60 –105 g/m ²)	16 –28 lb (60 –105 g/m ²)	16 –28 lb (60 –105 g/m ²)
	Thick Paper	No	29 –44 lb (106 –165 g/m ²)	No
	Envelope	No	24 lb (90 g/m ²)	No
Paper Capacity	Plain Paper 20 lb (75 g/m ²)	250 sheets	1 sheet	550 sheets
	Transparency	20 sheets	1 sheet	No
	Label	No	1 sheet	No
	Envelope	No	1 sheet	No

Specifications

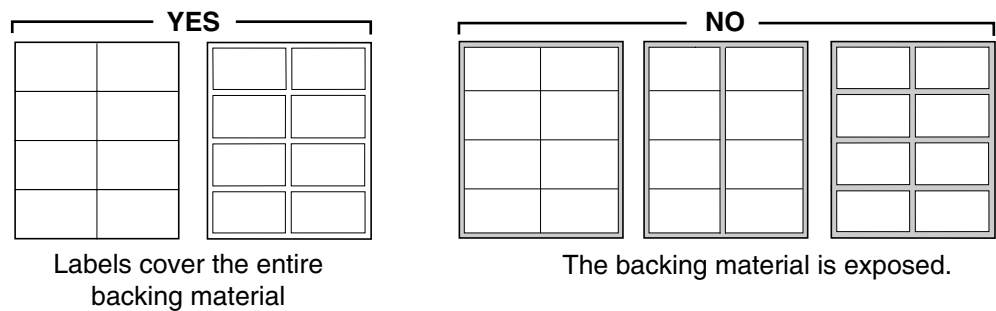
Transparencies and Labels

You may also print on labels and transparencies that are made for the printer. We recommend using the following types.

Paper Type	Paper Size	Recommended Type
Transparency	Letter/A4	3M PP2500 (For DP-1520P/1820P/1820E) 3M CG3300 (For DP-180/190)
Label	Letter	Avery 5160 – 5163, Avery 5660 – 5663 (For DP-180/190)
	A4	Avery L7159 –L7164 (For DP-180/190)

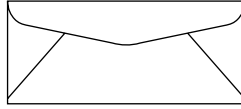
- To avoid damaging the printer, do not use ink jet transparency.
- Do not use transparencies that have been fed through the printer once.

Note: With any label stock, the labels must completely cover the backing material as shown below.



Envelopes

It is recommended that you purchase only high quality envelopes with diagonal seams as shown below.

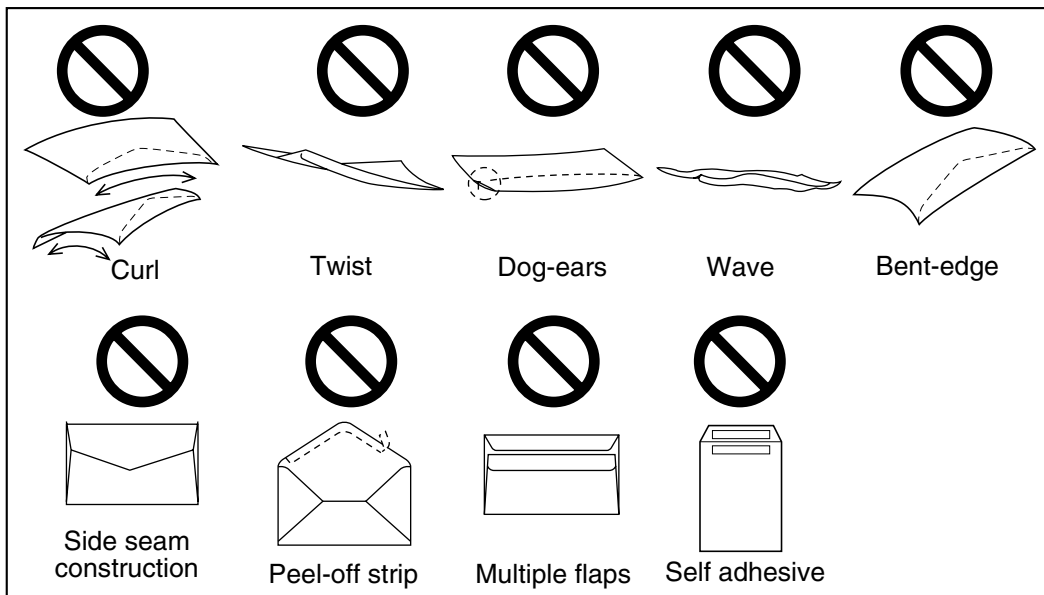


High quality envelopes have the following characteristics:

- A thin, sharply creased leading edge.
- Paper weight of 24 lb (90 g/m²).
- Flat, free of curls, wrinkles, nicks, etc.

It is not recommended that you use envelopes with any of the following characteristics (using these may result in paper jams or print quality problems).

- Irregularly shaped envelopes
- Envelopes with curls, wrinkles, nicks, twists, dog-ears or other damage
- Envelopes with side seam construction
- Highly textured envelopes, or with extremely shiny surfaces
- Envelopes that seal by removing a peel-off strip
- Envelopes with more than one flap to be sealed
- Self-adhesive envelopes
- Envelopes that are baggy or not sharply creased
- Embossed envelopes
- Envelopes that have previously been printed with a laser printer
- Envelopes that have been previously printed inside

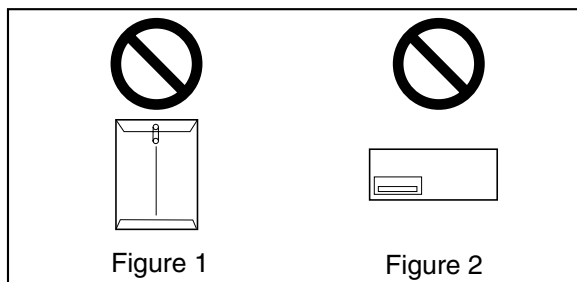


Specifications

Envelopes

Do not attempt to print on any of the following types of envelopes. These may cause damage to your printer.

- Envelopes with clasps, snaps or tie strings (see Figure 1)
- Envelopes with transparent windows (see Figure 2)
- Envelopes that will melt, discolor, scorch, offset or release hazardous emissions when exposed to 200 °C (392 °F) for 0.1 second
- Envelopes that use encapsulated types of adhesive that do not require moistening but rely on pressure to seal them



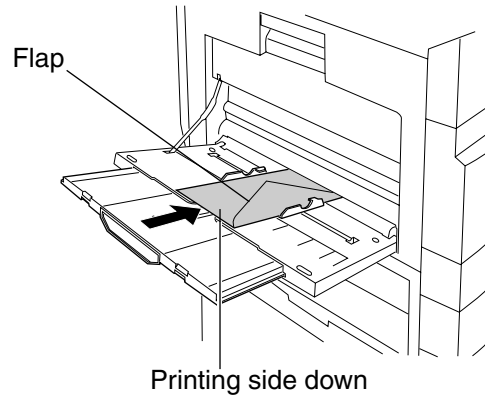
Always test a sample of the envelopes you are thinking of buying. Confirm that the envelope performs acceptably.

For best printing results

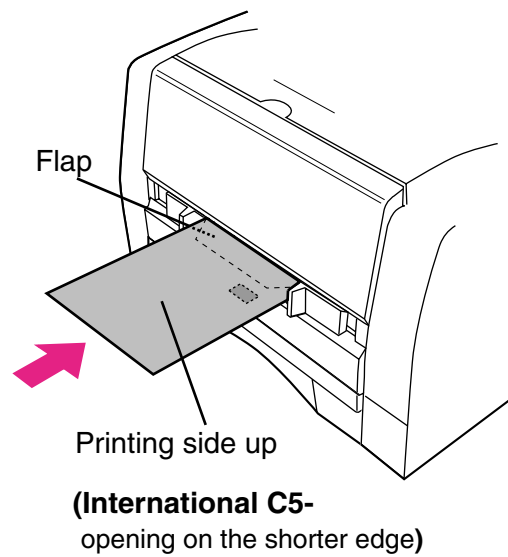
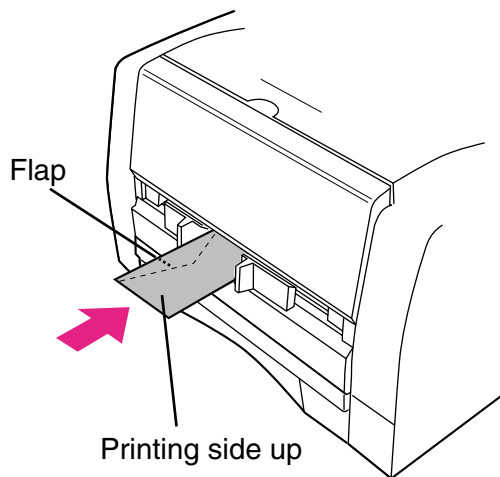
- Avoid printing in high humidity.
High humidity may cause the envelope to curl and pick up excess toner.
High humidity may also cause the envelope to seal.
- Envelope storage is very important. Store them away from moisture and humid air, where they can lay flat and their edges will not be bent or damaged. The humidity should not exceed 70%RH.

Loading the Envelopes

■ DP-1520P/1820P/1820E



■ DP-180/190



Specifications

Printer Specifications

Printing Speed	DP-1520P: 15 sheets/minute (A4/Letter size plain paper, simplex printing) DP-180: 18 sheets/minute (A4 size plain paper, simplex printing) DP-1820P/1820E: 18 sheets/minute (A4/Letter size plain paper, simplex printing) DP-190: 19 sheets/minute (Letter size plain paper, simplex printing)
Resolution (dots per inch)	300 x 300, 600 x 600
Interface	USB 1.1 Ethernet (100Base-TX /10Base-T)
Applicable OS	Windows 98, Windows Me, Windows NT 4.0 (With Service Pack 3 or later is required), Windows 2000, Windows XP, Windows Server 2003
Printer Working Memory	20 MB

memo

Printing Operation Fails

If the printing operation fails, check the following items first:

- Whether the connecting cable (USB or Ethernet LAN cable) is properly connected.
- Power of the device is turned ON.
- Paper is loaded properly in the device.
- An error message is not displayed on the device.

The above points can be verified by printing a test page. Refer to the following for procedures on test page printing:

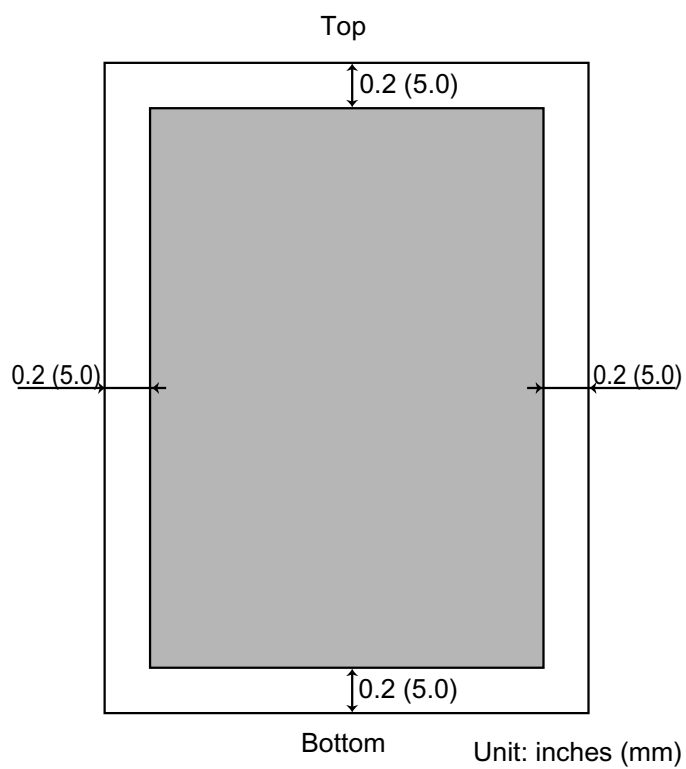
Windows 98/Windows Me	[General Tab]	(See page 37)
Windows NT 4.0	[General Tab]	(See page 45)
Windows 2000/Windows XP/Windows Server 2003	[General Tab]	(See page 54)

Document is Not Printed Correctly

Problem	Possible Cause / Solution(s)
Characters are not printed in the correct positions or the characters near the edges of the page are missing.	<ul style="list-style-type: none"> • Check and specify the paper size and orientation settings in the printer driver to coincide with the application. • The characters are outside the printing area of the machine.
The font type is incorrect.	<ul style="list-style-type: none"> • Check whether the selected font is installed on the PC. • Select "Use Printer TrueType fonts" on the Font tab of the Printer Driver Properties dialog box.
Printing stops in the middle of the run.	<ul style="list-style-type: none"> • Check whether there is a Network problem.
Although print data is transferred to your machine, it does not print.	<ul style="list-style-type: none"> • Make sure the printer is online. • Make sure the machine is not in the Shutdown Mode. Press ENERGY SAVER key to return to standby mode. See the Operating Instructions for Copier & Network Scanner for details. • Make sure the USB printer cable is connected properly. • Restore the power if the ON LINE LED is Off even if the USB printer cable is connected.

Printing Area

When printing to the device, there is a 0.2 inches (5.0 mm) non-printable margin on all 4 sides.



Symbol Table

No.	Symbol Set
0	Legal (HP Legal)
1	ISO 4 (United Kingdom)
2	ISO 6 (ANSI, ASCII)
3	ISO 11 (Swedish/French)
4	ISO 15 (Italian)
5	ISO 17 (Spanish)
6	ISO 21 (German)
7	ISO 60 (Norwegian, v.1)
8	ISO 69 (French)
9	ISO 8859/2 Latin 2
10	ISO 8859/2 Latin 5
11	PC-8 (IBM-8, Code Page 437)
12	PC-8 DN (Denmark/Norway)
13	PC-850 (IBM-850)
14	PC-8 TK (Code Page 437T)
15	PC-852 Latin 2
16	Roman 8
17	Desk Top
18	ECMA 94 (Latin 1)
19	Macintosh
20	Math 8 (HP Math 8)
21	Microsoft Publishing
22	Pi Font (HP Pi Font)
23	PS Math
24	PS Text
25	Ventura International
26	Ventura Math
27	Ventura US
28	Windows
29	Windows 3.1
30	Windows 3.1 Latin 2
31	Windows 3.1 Latin 5
32	Symbol, Windows 3.1
33	Wingdings, Windows 3.1
34	Baltic (PC-1004)
35	Baltic (PC-775 Baltic)

USA Only

WARRANTY

PANASONIC DIGITAL DOCUMENT COMPANY MAKES NO WARRANTIES, GUARANTEES OR REPRESENTATIONS, EXPRESSED OR IMPLIED, TO THE CUSTOMER WITH RESPECT TO THIS PANASONIC MACHINE, INCLUDING BUT NOT LIMITED TO, ANY IMPLIED WARRANTY OF MERCHANTABILITY OR FITNESS FOR A PARTICULAR PURPOSE.

PANASONIC DIGITAL DOCUMENT COMPANY ASSUMES NO RISK AND SHALL NOT BE SUBJECT TO LIABILITY FOR ANY DAMAGE, INCLUDING, BUT NOT LIMITED TO DIRECT, INDIRECT, SPECIAL, INCIDENTAL OR CONSEQUENTIAL DAMAGES OR LOSS OF PROFITS SUSTAINED BY THE CUSTOMER IN CONNECTION WITH THE USE OR APPLICATION OF THIS PANASONIC MACHINE. SEE YOUR DEALER FOR DETAILS OF DEALER'S WARRANTY.

For Service, Call: _____

Panasonic Digital Document Company
Unit of Matsushita Electric Corporation of America
Two Panasonic Way
Secaucus, New Jersey 07094
<http://panasonic.co.jp/pcc/en/>

Panasonic Canada Inc.
5770 Ambler Drive
Mississauga, Ontario L4W 2T3

For Customer Support (Except for
USA and Canada Users):
Panasonic Communications Co., Ltd.
Fukuoka, Japan
<http://www.panasonic.co.jp/global/>

T0304-3064
DZSD002189-3
June 2004
Published in Japan