



# Bluetooth USB Adapter

# User Guide



Model No. **USBBT100**



## Copyright and Trademarks

Specifications are subject to change without notice. Linksys is a registered trademark or trademark of Cisco Systems, Inc. and/or its affiliates in the U.S. and certain other countries. Copyright © 2003 Cisco Systems, Inc. All rights reserved. Other brands and product names are trademarks or registered trademarks of their respective holders.

## How to Use this User Guide

This User Guide to the Bluetooth USB Adapter has been designed to make understanding using the Adapter easier than ever. Look for the following items when reading this Guide:



This checkmark means there is a Note of interest and is something you should pay special attention to while using the Adapter.



This exclamation point means there is a Caution or warning and is something that could damage your property or the Adapter.



This question mark provides you with a reminder about something you might need to do while using the Adapter.

In addition to these symbols, there are definitions for technical terms that are presented like this:  
***word: definition.***

Also, each figure (diagram, screenshot, or other image) is provided with a figure number and description, like this:

### **Figure 0-1: Sample Figure Description**

Figure numbers and descriptions can also be found in the "List of Figures" section in the "Table of Contents".

<b>Chapter 1: Introduction</b>	<b>1</b>
Welcome	1
What's in this Guide?	2
<b>Chapter 2: Installing the Bluetooth Software and Connecting the Adapter</b>	<b>3</b>
Installing the Bluetooth Software	3
Connecting the Adapter	6
<b>Chapter 3: Using the Bluetooth USB Adapter</b>	<b>7</b>
Navigating from Your Desktop	7
The Bluetooth System Tray Icon	8
Explore My Bluetooth Places	8
The Bluetooth Setup Wizard	9
Advanced Configuration	13
Quick Connection	18
<b>Appendix A: Troubleshooting</b>	<b>19</b>
Common Problems and Solutions	19
Frequently Asked Questions	20
<b>Appendix B: Bluetooth Applications and Services</b>	<b>21</b>
Bluetooth Client Applications	21
Services	22
<b>Appendix C: Specifications</b>	<b>23</b>
<b>Appendix D: Warranty Information</b>	<b>25</b>
<b>Appendix E: Regulatory Information</b>	<b>26</b>
<b>Appendix F: Contact Information</b>	<b>29</b>

Figure 1-1: The Bluetooth USB Adapter	1
Figure 2-1: The Setup Wizard's Welcome Screen	3
Figure 2-2: The InstallShield Wizard's Welcome Screen	3
Figure 2-3: The License Agreement Screen	4
Figure 2-4: The Destination Folder Screen	4
Figure 2-5: The Install Screen	4
Figure 2-6: The Driver Signature Notice	5
Figure 2-7: The Adapter's Connection Screen	5
Figure 2-8: The Wizard Completed Screen	5
Figure 2-9: The Bluetooth Icon	6
Figure 2-10: Connecting the Adapter	6
Figure 3-1: The Bluetooth Icon	7
Figure 3-2: The Bluetooth System Tray Icon's Menu	8
Figure 3-3: My Bluetooth Places	8
Figure 3-4: The Bluetooth Setup Wizard	9
Figure 3-5: The Bluetooth Service Selection Screen	10
Figure 3-6: The Bluetooth Device Selection Screen	10
Figure 3-7: The Setup Wizard Completion Screen	10
Figure 3-8: The Bluetooth Device Selection Screen	11
Figure 3-9: The Bluetooth Security Setup Screen	11
Figure 3-10: The Bluetooth Service Selection Screen	11
Figure 3-11: The Bluetooth Service Selection Screen	12
Figure 3-12: Change the Computer Name and Type	12
Figure 3-13: Bluetooth Configuration - General tab	13
Figure 3-14: Bluetooth Configuration - Accessibility tab	14
Figure 3-15: PIN code notification	14
Figure 3-16: Bluetooth Configuration - Discovery tab	15
Figure 3-17: Bluetooth Configuration - Local Services tab	16
Figure 3-18: Local Services Properties	16
Figure 3-19: Bluetooth Configuration - Client Applications tab	17
Figure 3-20: Client Applications Properties	17
Figure 3-21: Bluetooth Configuration - Hardware	18
Figure 3-22: Quick Connection	18

# Chapter 1: Introduction

## Welcome

Thank you for choosing the Bluetooth USB Adapter. This Adapter brings all the uses of Bluetooth directly to your PC.

As you probably already know, Bluetooth technology provides consumer device connectivity, interfacing with your cellular phone, allowing PDA synchronization, and so much more. With every new Bluetooth device, your PC will now grant you access.

But what does all of this mean?

Bluetooth technology is always functioning, and can connect to other Bluetooth devices with Quick Connect. Consider your Bluetooth cell-phone. When brought within range of the USB Adapter, connected to your PC, you can upload phone directories onto your phone, dial out on your dial-up Internet connection on your cell-phone, or grab photos if your phone has an integrated camera. Imagine synchronizing your PDA without cables, using a Bluetooth mouse without line-of-sight Infrared lights, or printing to a Bluetooth printer.

PCs equipped with the Adapter can communicate without cumbersome cables and, since it's USB, there's no need to open your PC or engage in complex configuration.

Use the instructions in this User Guide to help you connect the Adapter, set it up, and configure it to function with your Bluetooth devices. These instructions should be all you need to get the most out of the Adapter.



**Figure 1-1: The Bluetooth USB Adapter**

**Bluetooth:** short-range wireless technology used for replacing cables in many consumer-electronics devices.

## What's in this Guide?

This user guide covers the steps for setting up and using the Bluetooth USB Adapter.

- **Chapter 1: Introduction**  
This chapter describes the Adapter's applications and this User Guide.
- **Chapter 2: Installing the Bluetooth Software and Connecting the Adapter**  
This chapter describes the Adapter's basic setup and connection.
- **Chapter 3: Using the Bluetooth USB Adapter**  
This chapter instructs you on the Adapter's various tools and functions.
- **Appendix A: Troubleshooting**  
This appendix describes some problems and solutions, as well as frequently asked questions, regarding installation and use of the Adapter.
- **Appendix B: Bluetooth Applications and Services**  
This appendix provides information on all the applications and services you may use with the Adapter
- **Appendix C: Specifications**  
This appendix provides the technical specifications for the Adapter.
- **Appendix D: Warranty Information**  
This appendix supplies the warranty information for the Adapter.
- **Appendix E: Regulatory Information**  
This appendix supplies the regulatory information regarding the Adapter.
- **Appendix F: Contact Information**  
This appendix provides contact information for a variety of Linksys resources, including Technical Support.

# Chapter 2: Installing the Bluetooth Software and Connecting the Adapter

## Installing the Bluetooth Software

Before connecting the Adapter to your PC's USB port, you must install the Bluetooth Software, which will install everything your system needs to use the Adapter. Once the Bluetooth Software is installed, you will be able to connect the Adapter to your PC.

1. Insert the Adapter's Setup Wizard CD into your PC's CD-ROM. It should start up automatically. If it does not, click **Start** and choose **Run**. In the field that appears, enter **D:\setup.exe** (if "D" is the letter of your CD-ROM drive). Once the CD starts, the Wizard's Welcome screen should appear.

Click the **Install** button to install the Bluetooth Software. Clicking the **User Guide** button brought up this User Guide. Clicking the **Exit** button will exit the Setup Wizard.

2. After clicking the **Install** button, the InstallShield Wizard's Welcome screen will appear. Click the **Next** button to continue.



Figure 2-1: The Setup Wizard's Welcome Screen

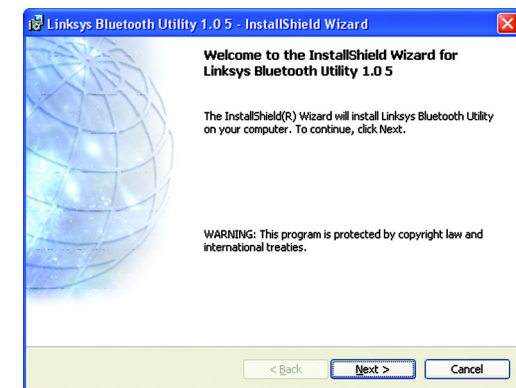


Figure 2-2: The InstallShield Wizard's Welcome Screen

- The next screen is the License Agreement screen. Read the License Agreement and click the radio button for **I accept the terms in the license agreement**. Then, click the **Next** button. You may not click the Next button unless you click the button showing that you accept the terms.

If you wish to move back through the Wizard, click the **Back** button. If you wish to close the Wizard, click **Cancel**.

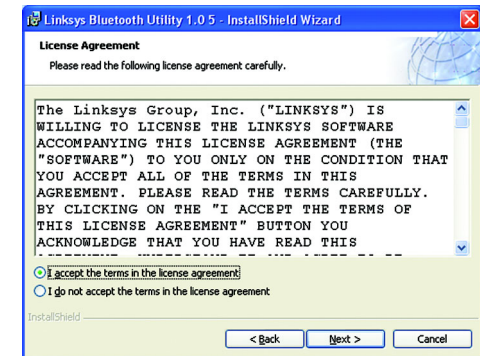


Figure 2-3: The License Agreement Screen

- You will next be asked for a Destination folder. This is where the Bluetooth Software will be installed. A default directory will be displayed but, if you wish to change that, you can click the **Change** button and select a different folder. Then, click the **Next** button.

If you wish to move back through the Wizard, click the **Back** button. If you wish to close the Wizard, click **Cancel**.

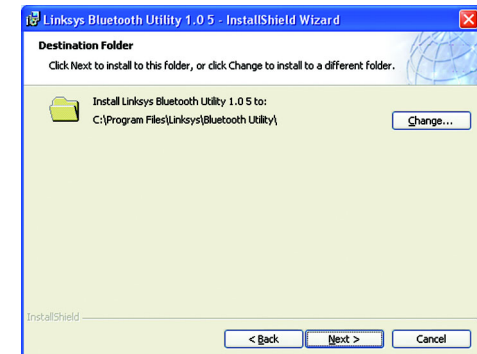


Figure 2-4: The Destination Folder Screen

- Now, the Bluetooth Software will be ready to begin installing all of the necessary files. Click the **Install** button to begin.

If you wish to move back through the Wizard, click the **Back** button. If you wish to close the Wizard, click **Cancel**.

The files will proceed to install.

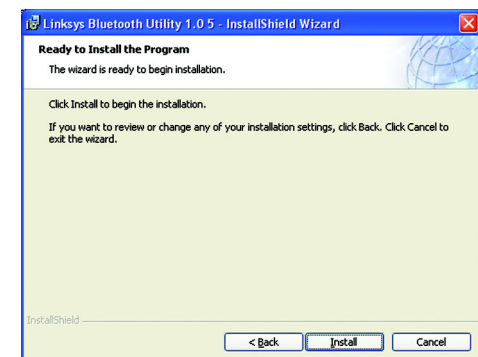


Figure 2-5: The Install Screen



- During installation, you may see a Driver Signature Notice. This product has been tested for use with Windows. Click the **OK** button to continue.

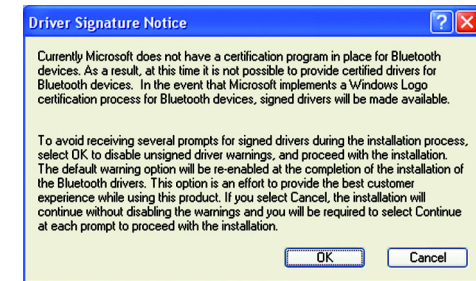


Figure 2-6: The Driver Signature Notice

- At this point, you should connect the Adapter to your PC's USB port. (See the description on the next page for details.) After connecting it, click the **OK** button. If you do not wish to connect it at this time, click the **Cancel** button. The Adapter may be connected after the Bluetooth Software is installed.



Figure 2-7: The Adapter's Connection Screen

- The Wizard, along with all you need to install the Adapter, has been successfully installed. Click the **Finish** button to close the final window.



Figure 2-8: The Wizard Completed Screen

## Connecting the Adapter

After a moment, Windows will automatically detect the Adapter and a Bluetooth icon will appear in your system tray.

The Bluetooth Icon



Figure 2-9: The Bluetooth Icon

To connect the Adapter to your PC, simply plug it into any unused USB port.



**NOTE:** Before you can start using the Adapter, you must run the Bluetooth Setup Wizard, as described in Chapter 3: Using the Bluetooth USB Adapter.



Figure 2-10: Connecting the Adapter

# Chapter 3: Using the Bluetooth USB Adapter

## Navigating from Your Desktop

Once you've installed the Setup Wizard and connected the Adapter, you will find some changes on your PC's desktop.

There will be a Bluetooth Icon on your desktop, from which you'll be able to access the "My Bluetooth Places" folder. In this folder, you will see all of the Bluetooth devices with which the Adapter may communicate.

But how do those devices get in that folder? How do you configure the Adapter to work with these devices? These, and the most important interactions with the Adapter, will be handled through the most important change to your desktop: The Bluetooth System Tray Icon. The Bluetooth System Tray icon allows you to access all of the functions of the Adapter with a right click of your mouse. It also tells you how the Adapter is functioning. A red icon means the Adapter is Disabled.



**NOTE:** If you see a Red Bluetooth icon, right click the icon and select **Start the Bluetooth Device**. This will refresh the device so it can function normally.



**Figure 3-1: The Bluetooth Icon**

## The Bluetooth System Tray Icon

Let's review some of the things you'll be able to do by right-clicking the Bluetooth Icon in the System Tray. Right-clicking your mouse over the icon will bring up the Bluetooth Menu, with several options:

### Explore My Bluetooth Places

Clicking this option will open the "My Bluetooth Places" folder, displaying the Bluetooth devices with which the Adapter has been configured.

### Bluetooth Setup Wizard

Run this Wizard when you first connect your Adapter, or when there are new devices with which you want the Adapter to communicate.



**NOTE:** The Adapter must be configured through the Setup Wizard before it can detect any Bluetooth devices. Run the Setup Wizard before you want to start using the Adapter.

### Advanced Configuration

While the advanced configuration is not required, it will allow you to optimize and personalize many of the Adapter's options.

### Quick Connect

Select the devices and services to which the Adapter will automatically connect.

### Stop the Bluetooth Device

This is a convenient way of turning off the Adapter without having to disconnect it.

## Explore My Bluetooth Places

In this folder, you'll find the devices with which you've configured the Adapter to function.



Figure 3-2: The Bluetooth System Tray Icon's Menu

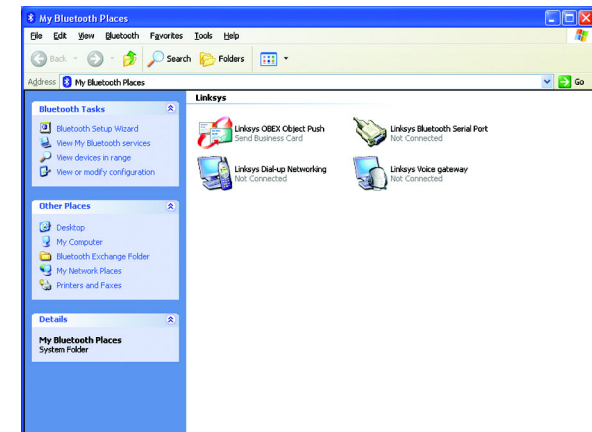


Figure 3-3: My Bluetooth Places

## The Bluetooth Setup Wizard

Before you can begin using the Adapter, you must run the Bluetooth Setup Wizard. Right-click the Bluetooth System Tray Icon and select Bluetooth Setup Wizard from the menu that appears. This will open the Bluetooth Setup Wizard.

The Wizard gives you four choices:

**I know the service I want to use and I want to find a Bluetooth device that provides that service.**

Bluetooth devices provide many services. Select this option when you wish to find a device for a specific service.

**I want to find a specific Bluetooth device and configure how this computer will use its services.**

Already know the device you wish to select? Chose this option when you wish to find a service for a specific device. This option is recommended for users who are not familiar with Bluetooth devices.

**I want to configure the Bluetooth services that this computer will provide to remote devices.**

As the Adapter communicates with other Bluetooth devices, so are they communicating with the Adapter. Select this option to configure the services the Adapter provides for other devices.

For information on Applications and Services, see Appendix B: Bluetooth Applications and Services.

**I want to change the name and/or device type that this computer displays to other Bluetooth devices.**

Personalize how the Adapter appears to other Bluetooth devices.

From this screen, you can click the **Next** button to proceed with the Wizard or the **Cancel** button to exit the Wizard.

Use the Wizard to configure those options you must. Not all options must be configured. These options are provided in detail on the following pages.



**Figure 3-4: The Bluetooth Setup Wizard**

I know the service I want to use and I want to find a Bluetooth device that provides that service.

After you select this option from the Wizard's menu and click the **Next** button, the *Bluetooth Service Selection* screen will appear. Select the service that you need and click the **Next** button.



**NOTE:** For descriptions of services provided by Bluetooth devices, see that device's documentation.

Next, the *Bluetooth Device Selection* screen will appear. This screen will list those devices that provide the service you've requested. Chose the device to which you wish to connect and click the **Next** button to continue.

The *Setup Wizard Completion Screen* will appear next. The name of the service will appear at the top of the screen and you can personalize this if you wish. If you wish to further configure the service you've selected, click the **Configure** button. In most cases, further configuration is not required. To start the connection upon completing the Wizard, select the **Start the Connection** option. A shortcut to this device will be placed in the *My Bluetooth Places* folder. To create more shortcuts in addition to the one created by default and restart the Wizard, select the **Create a shortcut and then restart this wizard so that I can create additional shortcuts** option. Click the **Back** button if you wish to go back a step, the **Cancel** button if you wish to leave the Wizard without saving your changes, or the **Finish** button to complete the Wizard.

The Adapter will then try to connect to that device. If a PIN code is required for security, you will be notified. At this point, you will be asked for your PIN code as well as the PIN code for the other Bluetooth device before the connection can be completed.

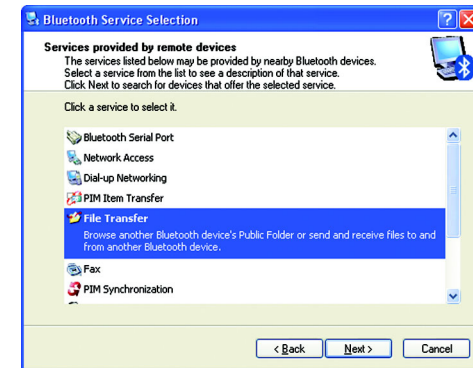


Figure 3-5: The Bluetooth Service Selection Screen

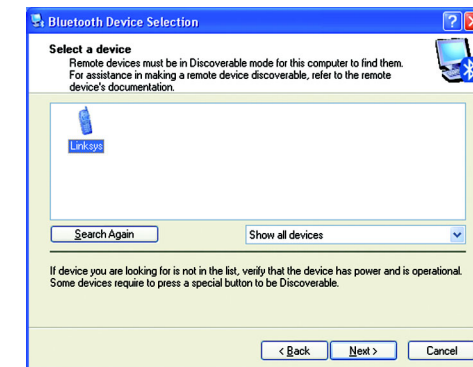


Figure 3-6: The Bluetooth Device Selection Screen



Figure 3-7: The Setup Wizard Completion Screen

I want to find a specific Bluetooth device and configure how this computer will use its services.

After you select this option from the Wizard's menu and click the **Next** button, the *Bluetooth Device Selection* screen will appear. This screen will list those devices that provide the service you've requested. Chose the device to which you wish to connect and click the **Next** button to continue.

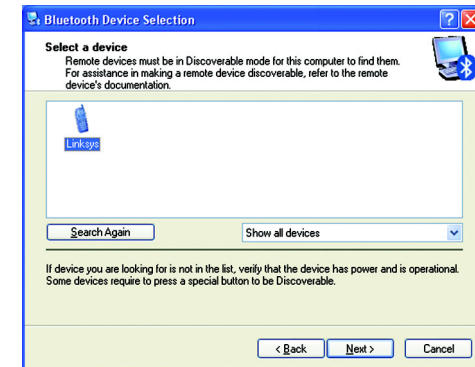


Figure 3-8: The Bluetooth Device Selection Screen

The *Bluetooth Security Setup* screen will appear next. Select the pairing options for that device, including the PIN code if required, and click the **Next** button. If the PIN code is required, you will be asked for your PIN code as well as the PIN code for the other Bluetooth device before the connection can be completed.



Figure 3-9: The Bluetooth Security Setup Screen

Last, the *Bluetooth Service Selection* screen will appear. Select the service you wish to use for the device you selected. If you wish to further configure the service you've selected, click the **Configure** button. In most cases, further configuration is not required. Click the **Back** button if you wish to go back a step, the **Cancel** button if you wish to leave the Wizard without saving your changes, or the **Finish** button to complete the Wizard.

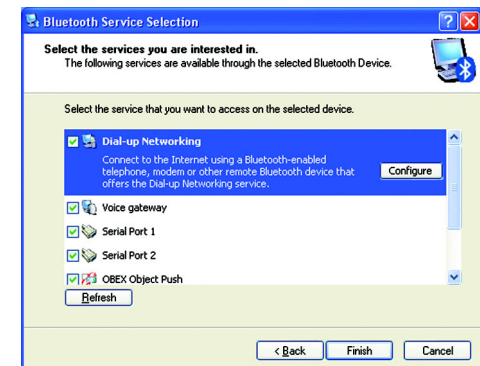


Figure 3-10: The Bluetooth Service Selection Screen



I want to configure the Bluetooth services that this computer will provide to remote devices.

What services do you wish the Adapter to provide to your other Bluetooth devices? Select these from the screen that appears, the *Bluetooth Service Selection* screen. If you wish to further configure the service you've selected, click the **Configure** button. In most cases, further configuration is not required. Click the **Back** button if you wish to go back a step, the **Cancel** button if you wish to leave the Wizard without saving your changes, or the **Finish** button to complete the Wizard.

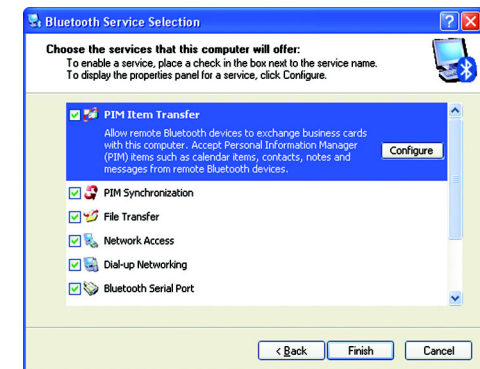


Figure 3-11: The Bluetooth Service Selection Screen

I want to change the name and/or device type that this computer displays to other Bluetooth devices.

If you wish to personalize the Computer name as shown on other Bluetooth devices or change the type of computer, select this option. Type in a new Computer name and select the type of computer on which the Adapter is connected. Then, click the **Back** button if you wish to go back a step, the **Cancel** button if you wish to leave the Wizard without saving your changes, or the **Finish** button to complete the Wizard.

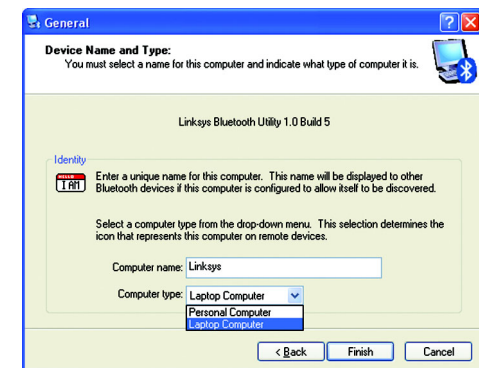


Figure 3-12: Change the Computer Name and Type



## Advanced Configuration

While the advanced configuration is not required, it will allow you to optimize and personalize many of the Adapter's options.

When selecting the Advanced Configuration option from the menu brought up by right-clicking the Bluetooth Icon in the System Tray, you will open the *Bluetooth Configuration* screen. This screen is composed of six tabs:

**General.** From this tab, you can personalize general information about the computer as shown on other Bluetooth devices.

**Accessibility.** From this tab, you can manage the access of other Bluetooth devices to your computer. It also allows you to set an Audio warning when a PIN code is requested.

**Discovery.** From this tab, you can specify the types of Bluetooth devices the Adapter will discover.

**Local Services.** From this tab, you can determine which services the Adapter will provide to other Bluetooth devices.

**Client Applications.** From this tab, you can configure which services the Adapter will access from other Bluetooth devices.

**Hardware.** This tab displays general hardware information about the Adapter.

These tabs are explained on the following pages, starting with the General tab.

### The General tab.

If you wish to personalize the Computer name as shown on other Bluetooth devices or change the type of computer, select this option. Type in a new Computer name and select the type of computer on which the Adapter is connected. Then, click the **Cancel** button if you wish to leave the Wizard without saving your changes, the **Apply** button to save the settings, leaving the *Bluetooth Configuration* screen open, or the **OK** button to save these settings and close the *Bluetooth Configuration* screen. You can also press the **Help** button for more information.

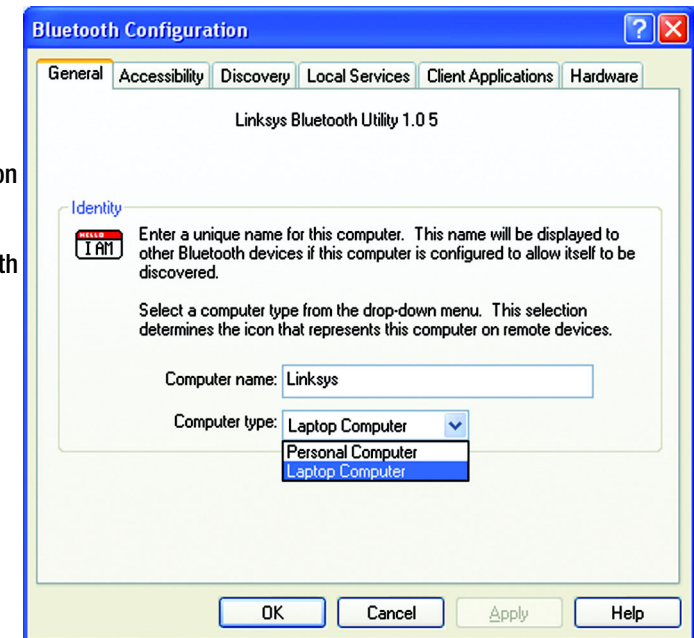


Figure 3-13: Bluetooth Configuration - General tab

## The Accessibility tab.

From this tab, you can manage access the Adapter has to other Bluetooth devices.

To allow Bluetooth devices to discover the Adapter, select the box beside **Let other Bluetooth devices discover this computer**.

If you do not want any Bluetooth device to access the Adapter, select **No devices** from the *Allow* pull-down menu. If you want any Bluetooth device to access the Adapter, select **All devices** from the *Allow* pull-down menu. If you want to limit those Bluetooth devices that access the Adapter, select **Only devices listed below** from the *Allow* pull-down menu. Then, in the box below that, you can add Bluetooth devices (by clicking the **Add Device** button) or delete Bluetooth devices (by clicking the **Delete** button) that you will allow access.

When a PIN code is required, you can assign an audio signal with the **Select audio file** button. This will open the *Notifications* screen, from which you can select how and when you'll be notified and browse for the audio file you wish to play.

Then, click the **Cancel** button if you wish to leave the Wizard without saving your changes, the **Apply** button to save the settings, leaving the *Bluetooth Configuration* screen open, or the **OK** button to save these settings and close the *Bluetooth Configuration* screen. You can also press the **Help** button for more information.

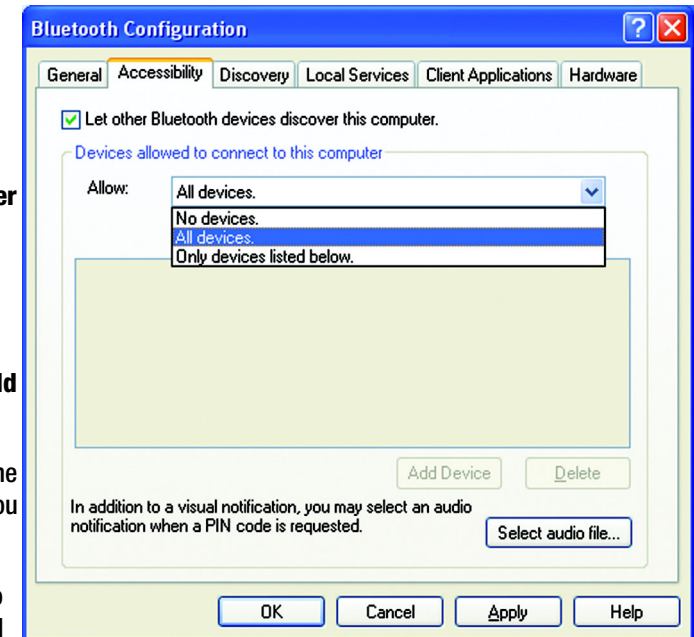


Figure 3-14: Bluetooth Configuration - Accessibility tab

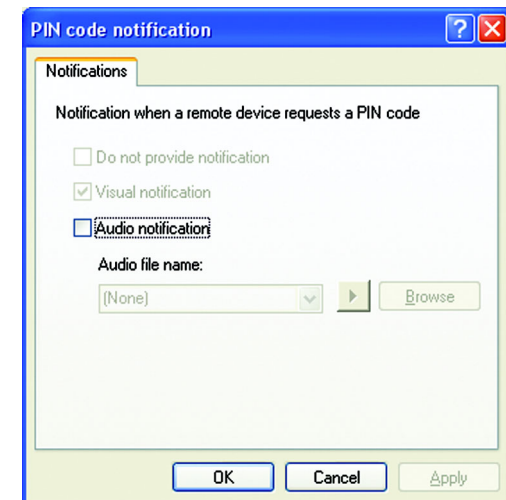


Figure 3-15: PIN code notification

## The Discovery tab.

From this tab, you can specify the types of Bluetooth devices the Adapter will access.

The Adapter automatically searches for new Bluetooth devices every ten minutes. You can select how often the Adapter will discover new Bluetooth devices by clicking the box beside **Look for other Bluetooth devices** and filling in how often this search will be done.

If you want all Bluetooth devices to be reported, select **Report all Bluetooth devices** from the pull-down menu. If you want to limit those Bluetooth devices that the Adapter reports, select **Report only selected Bluetooth devices** from the pull-down menu. Then, in the box below that, you can add Bluetooth devices (by clicking the **Add Device** button) or delete Bluetooth devices (by clicking the **Delete** button) that will be reported.

Then, click the **Cancel** button if you wish to leave the Wizard without saving your changes, the **Apply** button to save the settings, leaving the *Bluetooth Configuration* screen open, or the **OK** button to save these settings and close the *Bluetooth Configuration* screen. You can also press the **Help** button for more information.

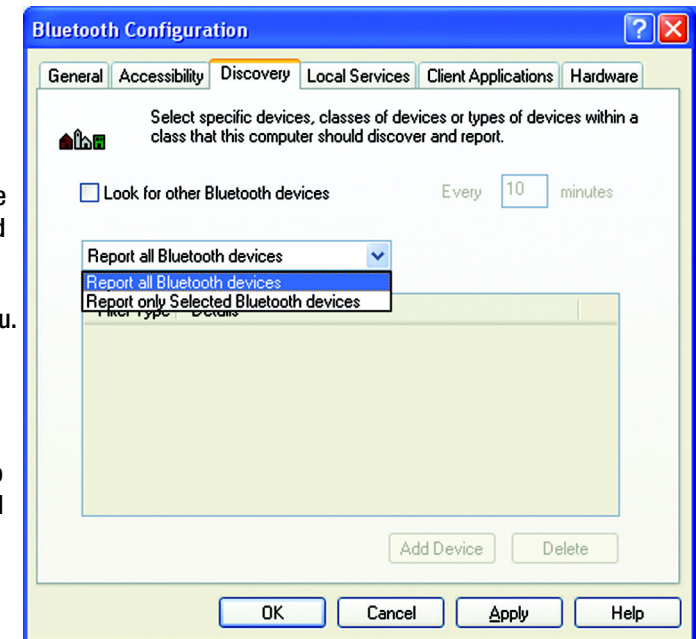


Figure 3-16: Bluetooth Configuration - Discovery tab

## The Local Services tab.

From this tab, you can determine which services the Adapter will provide to other Bluetooth devices.

The **Add Serial Service** button allows you to connect one Bluetooth USB Adapter on a PC to another Bluetooth USB Adapter on a PC through a serial connection. If you wish to break this connection, click the **Delete** button.

These services can be configured for security and other options by double-clicking the service or selecting the service and clicking the **Properties** button. The screen that appears will show you all the options you can configure for that service. The one shown below is for PIM Synchronization.

Then, click the **Cancel** button if you wish to leave the Wizard without saving your changes, the **Apply** button to save the settings, leaving the *Bluetooth Configuration* screen open, or the **OK** button to save these settings and close the *Bluetooth Configuration* screen. You can also press the **Help** button for more information.

For information on Applications and Services, see Appendix B: Bluetooth Applications and Services.

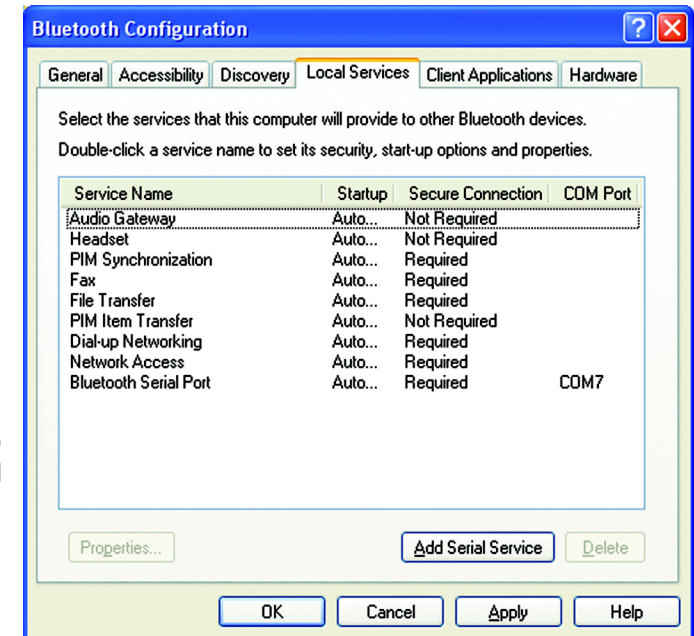


Figure 3-17: Bluetooth Configuration - Local Services tab

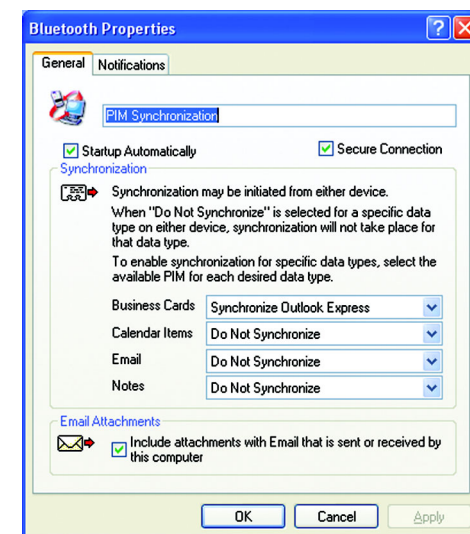


Figure 3-18: Local Services Properties

## The Client Applications tab.

From this tab, you can select which services the Adapter will access from other Bluetooth devices.

The **Add COM port** button allows you to connect one Bluetooth USB Adapter on a PC to another Bluetooth USB Adapter on a PC through a serial connection. If you wish to break this connection, click the **Delete COM port** button.

These services can be configured for security and other options by double-clicking the service or selecting the service and clicking the **Properties** button. The screen that appears will show you all the options you can configure for that service. The one shown below is for PIM Synchronization.

Then, click the **Cancel** button if you wish to leave the Wizard without saving your changes, the **Apply** button to save the settings, leaving the *Bluetooth Configuration* screen open, or the **OK** button to save these settings and close the *Bluetooth Configuration* screen. You can also press the **Help** button for more information.

For information on Applications and Services, see Appendix B: Bluetooth Applications and Services.

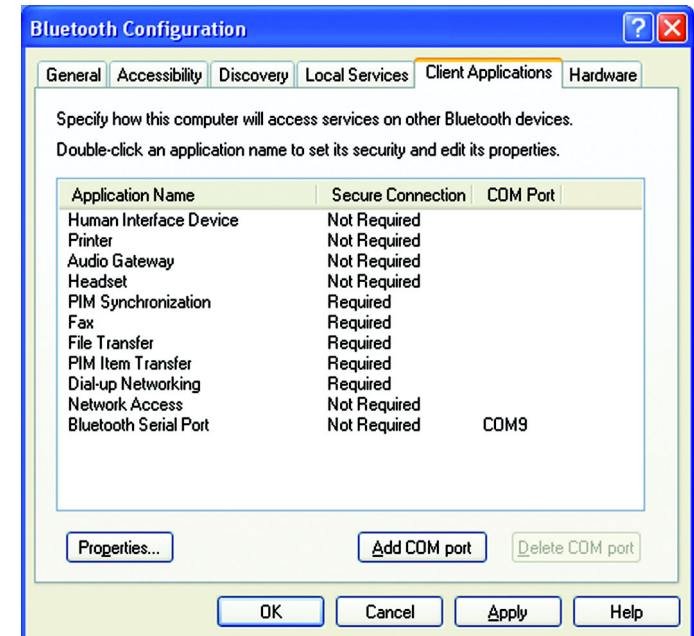


Figure 3-19: Bluetooth Configuration - Client Applications tab

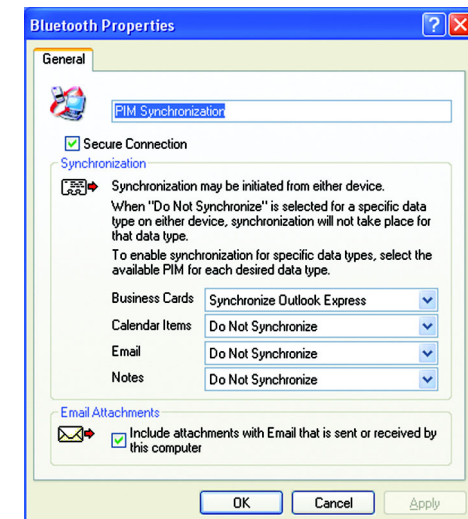


Figure 3-20: Client Applications Properties

## The Hardware tab.

This tab displays general hardware information about the Adapter, such as firmware version and MAC Address.

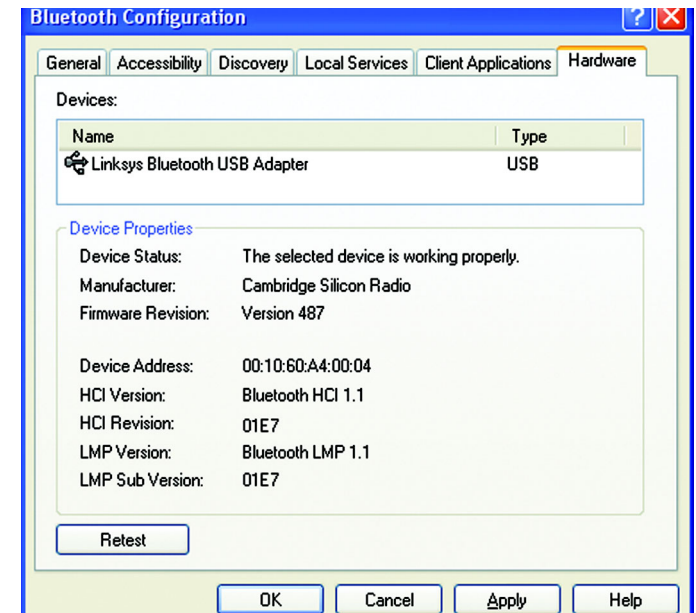


Figure 3-21: Bluetooth Configuration - Hardware

## Quick Connection

Quick Connection allows you to rapidly re-establish a previous connection in specific service. It is also handy at finding Bluetooth Device to establish a new connection and remember it for future Quick Connect use in specific service.

For information on Applications and Services, see Appendix B: Bluetooth Applications and Services.

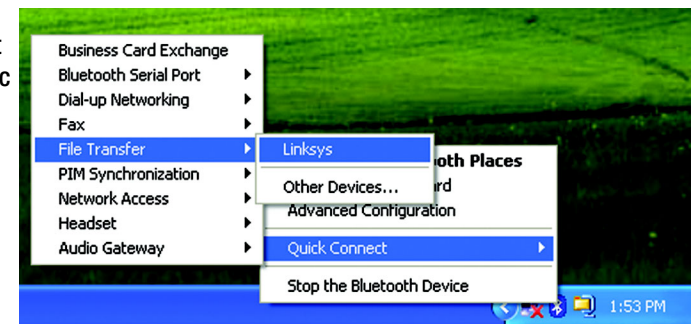


Figure 3-22: Quick Connection

# Appendix A: Troubleshooting

This appendix consists of two parts: “Common Problems and Solutions” and “Frequently Asked Questions.” This appendix provides solutions to problems that may occur during the installation and operation of the Bluetooth USB Adapter. Read the description below to solve your problems. If you can't find an answer here, check the Linksys website at [www.linksys.com](http://www.linksys.com).

## Common Problems and Solutions

**1. *My computer does not recognize the Bluetooth USB Adapter.***

The Adapter may not be properly connected to your computer. Disconnect the Adapter and reconnect it.

**2. *My Bluetooth devices do not work together.***

Try the following:

- Make sure a profile for each device exists for the other device. This is done from the Bluetooth Setup Wizard as described in Chapter 3: Using the Bluetooth USB Adapter.
- Make sure the device is functioning and can be detected by the Adapter. If it cannot, try detecting it again from the Bluetooth Setup Wizard.
- Make sure you are using the correct PIN code for devices that require it.

**3. *My Bluetooth device cannot be detected by the Adapter.***

Make sure the device is on and functioning properly. Properly functioning and operating Bluetooth devices should be detected by the Adapter on the Bluetooth Setup Wizard.

**4. *An “Error in pairing with device Linksys” message keeps appearing.***

This means you are entering the wrong PIN number for a device. Verify the PIN number.

**5. *An “Unknown Port” message appears when using a Bluetooth Serial Port.***

This means the port is currently in use. Please try another port.

**6. *I want to unpair Bluetooth devices. How is this done?***

Pairing is described in Chapter 3: Using the Bluetooth USB Adapter. To unpair two devices, open **My Bluetooth Places**, either from your PC's desktop or Control Panel, then click the **Entire Bluetooth Neighborhood**. Any Bluetooth device with a check mark is a paired device. Right click the Bluetooth device you want to Unpair and select **Unpair Device** from the menu that appears.

## Frequently Asked Questions

### ***What is “pairing”?***

Pairing (or bonding) is a concept introduced to create a first time recognition of what devices are allowed to communicate with each other or which devices belong together. Without an initial pairing, devices can usually not establish a communication session. Directions for pairing devices appears in Chapter 3: Using the Bluetooth USB Adapter.

### ***What type of security does Bluetooth employ?***

Bluetooth has built-in 128-bit encryption, which runs automatically.

### ***What is a Bluetooth PIN code?***

This is a unique password set by the user. When devices are paired or when Bluetooth-enabled devices are accessed, this code is requested for greater security. The PIN code is case-sensitive and can be alphanumeric (numbers or letters). The PIN code must consist of one or more characters.



# Appendix B: Bluetooth Applications and Services

The Bluetooth USB Adapter allows you to use many Bluetooth Applications and Services directly from your PC. Here are a list of those services so you can better understand and use them with the Adapter.

## Bluetooth Client Applications

Client Applications are software programs that allow your PC to use the Bluetooth services provided by other devices.

**Human Interface Device.** This allows your PC to use one or more remote Bluetooth Human Interface Devices as input/output devices. For instance, with this application, your PC could use a Bluetooth keyboard or Bluetooth mouse.

**Printer Application.** This allows your PC to use a Bluetooth printer. Once installed, the printer is used just as any other printer would be.

**Audio Gateway Application.** This allows a remote Bluetooth device to use your PC's microphone or speakers as the remote device's audio input and output devices.

**Headset.** This allows your PC to use a Bluetooth headset (or any other device that offers the Bluetooth headset service) as the PC's audio input and output device.

**PIM Synchronization.** This is used to synchronize your PC's Personal Information Manager (PIM) database with the PIM database of a remote Bluetooth device.

**Fax.** This allows your PC to send a fax using a Bluetooth Fax/Modem.

**File Transfer.** This allows your PC to perform file operations on another Bluetooth device's Bluetooth Exchange Folder (and the folders and files it contains).

**PIM Item Transfer.** This allows your PC to send and receive Personal Information Manager items to-and-from a remote Bluetooth device.

**Dial-up Network.** This allows your PC to use a modem that is connected to another Bluetooth device.

## Bluetooth USB Adapter

**Network Access.** This allows your PC to connect to a Local Area Network via a physical connection on a remote Bluetooth device and also to connect to an ad hoc network provided by a remote Bluetooth device.

**Bluetooth Serial Port.** The Bluetooth Serial Port application allows your PC to establish a wireless serial connection with a remote Bluetooth device. The applications on both PCs must be configured to send and receive data to and from the respective communications port (COM port) assigned to the Bluetooth serial port. The wireless serial connection may then be used by the applications as though a physical serial cable connected the devices.

## Services

Local Services are software programs your PC provides to other Bluetooth devices.

**Audio Gateway.** This allows another Bluetooth device to become your PC's audio input/output device.

**Headset.** This allows another Bluetooth device to use your PC's microphone and speakers for its audio input/output.

**PIM Synchronization.** This allows other Bluetooth devices to synchronize a Personal Information Manager database with your PC's PIM database.

**Fax.** This allows another Bluetooth device to send a fax from your PC's fax modem.

**File Transfer.** This allows other Bluetooth devices to perform file system operations to and from a configurable restricted area on your PC.

**PIM Item Transfer.** This allows other Bluetooth devices to exchange Personal Information Manager data items with your PC.

**Dial-up Networking.** This allows a remote Bluetooth device to use your PC's modem.

**Network Access.** This allows another Bluetooth device to access a Internet/Local Area Network from your PC and also allows access to an ad hoc network connected to your PC.

**Bluetooth Serial Port.** This allows another Bluetooth device to establish a wireless serial connection with your PC.

# Appendix C: Specifications

Standards	Bluetooth 1.1, USB 1.1
Operating Frequency	2.4 ~ 2.4835GHz
Transmit Power	13~17dBm (Class 1)
Antenna	1.2 dBi
Receive Sensitivity	-80dbm @ 0.1% BER
Power Consumption	Typical: 110mA Transmit: 200mA Receive: 80mA Idle: 26mA
Security Features	128-bit Encryption
Transmission Speed	723kbps (Max)
Wireless Technology	Frequency Hopping Spread Spectrum
Warranty	1 Year
Dimensions (L x W x H)	2.951" x 0.12" x 0.33" (75 mm x 3 mm x 85 mm)
Unit Weight	1 oz. (0.03 kg)
Certifications	FCC

#### **Bluetooth USB Adapter**

<b>Operating Temp.</b>	<b>0°C to 70°C (32°F to 104°F)</b>
<b>Storage Temp.</b>	<b>-20°C to 90°C (-4°F to 158°F)</b>
<b>Operating Humidity</b>	<b>10% to 90% Non-Condensing</b>
<b>Storage Humidity</b>	<b>10% to 90% Non-Condensing</b>

## Appendix D: Warranty Information

### LIMITED WARRANTY

Linksys warrants to the original end user purchaser ("You") that, for a period of one year. Your Linksys product will be free of defects in materials and workmanship under normal use. Your exclusive remedy and Linksys's entire liability under this warranty will be for Linksys at its option to repair or replace the product or refund Your purchase price less any rebates. This limited warranty extends only to the original purchaser.

If the Product proves defective during the Warranty Period call Linksys Technical Support in order to obtain a Return Authorization Number, if applicable. BE SURE TO HAVE YOUR PROOF OF PURCHASE ON HAND WHEN CALLING. If You are requested to return the Product, mark the Return Authorization Number clearly on the outside of the package and include a copy of your original proof of purchase. RETURN REQUESTS CANNOT BE PROCESSED WITHOUT PROOF OF PURCHASE. You are responsible for shipping defective Products to Linksys. Linksys pays for UPS Ground shipping from Linksys back to You only. Customers located outside of the United States of America and Canada are responsible for all shipping and handling charges.

ALL IMPLIED WARRANTIES AND CONDITIONS OF MERCHANTABILITY OR FITNESS FOR A PARTICULAR PURPOSE ARE LIMITED TO THE DURATION OF THE WARRANTY PERIOD. ALL OTHER EXPRESS OR IMPLIED CONDITIONS, REPRESENTATIONS AND WARRANTIES, INCLUDING ANY IMPLIED WARRANTY OF NON-INFRINGEMENT, ARE DISCLAIMED. Some jurisdictions do not allow limitations on how long an implied warranty lasts, so the above limitation may not apply to You. This warranty gives You specific legal rights, and You may also have other rights which vary by jurisdiction.

This warranty does not apply if the Product (a) has been altered, except by Linksys, (b) has not been installed, operated, repaired, or maintained in accordance with instructions supplied by Linksys, or (c) has been subjected to abnormal physical or electrical stress, misuse, negligence, or accident. In addition, due to the continual development of new techniques for intruding upon and attacking networks, Linksys does not warrant that the Product will be free of vulnerability to intrusion or attack.

TO THE EXTENT NOT PROHIBITED BY LAW, IN NO EVENT WILL LINKSYS BE LIABLE FOR ANY LOST DATA, REVENUE OR PROFIT, OR FOR SPECIAL, INDIRECT, CONSEQUENTIAL, INCIDENTAL OR PUNITIVE DAMAGES, REGARDLESS OF THE THEORY OF LIABILITY (INCLUDING NEGLIGENCE), ARISING OUT OF OR RELATED TO THE USE OF OR INABILITY TO USE THE PRODUCT (INCLUDING ANY SOFTWARE), EVEN IF LINKSYS HAS BEEN ADVISED OF THE POSSIBILITY OF SUCH DAMAGES. IN NO EVENT WILL LINKSYS' LIABILITY EXCEED THE AMOUNT PAID BY YOU FOR THE PRODUCT. The foregoing limitations will apply even if any warranty or remedy provided under this Agreement fails of its essential purpose. Some jurisdictions do not allow the exclusion or limitation of incidental or consequential damages, so the above limitation or exclusion may not apply to You.

Please direct all inquiries to: Linksys, P.O. Box 18558, Irvine, CA 92623.

# Appendix E: Regulatory Information

## FCC STATEMENT

This product has been tested and complies with the specifications for a Class B digital device, pursuant to Part 15 of the FCC Rules. These limits are designed to provide reasonable protection against harmful interference in a residential installation. This equipment generates, uses, and can radiate radio frequency energy and, if not installed and used according to the instructions, may cause harmful interference to radio communications. However, there is no guarantee that interference will not occur in a particular installation. If this equipment does cause harmful interference to radio or television reception, which is found by turning the equipment off and on, the user is encouraged to try to correct the interference by one or more of the following measures:

- Reorient or relocate the receiving antenna
- Increase the separation between the equipment or devices
- Connect the equipment to an outlet other than the receiver's
- Consult a dealer or an experienced radio/TV technician for assistance

## FCC Radiation Exposure Statement

This equipment complies with FCC radiation exposure limits set forth for an uncontrolled environment. This equipment should be installed and operated with minimum distance 20cm between the radiator and your body.

## INDUSTRY CANADA (CANADA)

This Class B digital apparatus complies with Canadian ICES-003.

Cet appareil numérique de la classe B est conforme à la norme NMB-003 du Canada.

The use of this device in a system operating either partially or completely outdoors may require the user to obtain a license for the system according to the Canadian regulations.

## EC DECLARATION OF CONFORMITY (EUROPE)

Linksys Group declares that the Instant Wireless™ Series products included in the Instant Wireless™ Series conform to the specifications listed below, following the provisions of the EMC Directive 89/336/EEC and Low Voltage Directive 73/23/EEC:

ETS 300-826, 301 489-1 General EMC requirements for Radio equipment.

EN 609 50 Safety

ETS 300-328-2 Technical requirements for Radio equipment.

## Bluetooth USB Adapter

Note: This equipment is intended to be used in all EU and EFTA countries. Outdoor use may be restricted to certain frequencies and/or may require a license for operation. For more details, contact Linksys Corporate Compliance.

Note: Combinations of power levels and antennas resulting in a radiated power level of above 100 mW are considered as not compliant with the above mentioned directive and are not allowed for use within the European community and countries that have adopted the European R&TTE directive 1999/5/EC and/or the CEPT recommendation Rec 70.03. For more details on legal combinations of power levels and antennas, contact Linksys Corporate Compliance.

Linksys Group™ vakuuttaa täten että Instant Wireless IEEE 802.11 PC Card tyyppinen laite on direktiivin 1999/5/EY, direktiivin 89/336/EEC ja direktiivin 73/23/EEC oleellisten vaatimusten ja sitä koskevien näiden direktiivien muiden ehtojen mukainen.

Linksys Group™ déclare que la carte PC Instant Wireless IEEE 802.11 est conforme aux conditions essentielles et aux dispositions relatives à la directive 1999/5/EC, la directive 89/336/EEC, et à la directive 73/23/EEC.

Belgique B L'utilisation en extérieur est autorisé sur le canal 11 (2462 MHz), 12 (2467 MHz), et 13 (2472 MHz).

Dans le cas d'une utilisation privée, à l'extérieur d'un bâtiment, au-dessus d'un espace public, aucun enregistrement n'est nécessaire pour une distance de moins de 300m. Pour une distance supérieure à 300m un enregistrement auprès de l'IBPT est requise. Pour une utilisation publique à l'extérieur de bâtiments, une licence de l'IBPT est requise. Pour les enregistrements et licences, veuillez contacter l'IBPT.

France F: Bande de fréquence restreinte: seuls les canaux 10, 11, 12, 13 (2457, 2462, 2467, et 2472 MHz respectivement) doivent être utilisés en France.

Toute utilisation, qu'elle soit intérieure ou extérieure, est soumise à autorisation. Vous pouvez contacter l'Autorité de Régulation des Télécommunications

(<<http://www.art-telecom.fr>>) pour la procédure à suivre.

France F: Restricted frequency band: only channels 10, 11, 12, 13 (2457, 2462, 2467, and 2472 MHz respectively) may be used in France. License required for every indoor and outdoor installations. Please contact ART for procedure to follow.

## Bluetooth USB Adapter

Deutschland D: Anmeldung im Outdoor-Bereich notwendig, aber nicht genehmigungspflichtig. Bitte mit Händler die Vorgehensweise abstimmen.

Germany D: License required for outdoor installations. Check with reseller for procedure to follow

Italia I: E' necessaria la concessione ministeriale anche per l'uso interno. Verificare con i rivenditori la procedura da seguire. L'uso per installazione in esterni non e' permessa.

Italy I: License required for indoor use. Use with outdoor installations not allowed.

the Netherlands NL License required for outdoor installations. Check with reseller for procedure to follow.

Nederlands NL Licentie verplicht voor gebruik met buitenantennes. Neem contact op met verkoper voor juiste procedure.



## Appendix F: Contact Information

Need to contact Linksys?

Visit us online for information on the latest products and updates to your existing products at:

<http://www.linksys.com> or  
<ftp.linksys.com>

Can't find information about a product you want to buy on the web? Do you want to know more about networking with Linksys products? Give our advice line a call at:  
Or fax your request in to:

800-546-5797 (LINKSYS)  
949-261-8868

If you experience problems with any Linksys product, you can call us at:

800-326-7114  
[support@linksys.com](mailto:support@linksys.com)

Don't wish to call? You can e-mail us at:

If any Linksys product proves defective during its warranty period, you can call the Linksys Return Merchandise Authorization department for obtaining a Return Authorization Number at:  
(Details on Warranty and RMA issues can be found in the Warranty Information section in this Guide.)

949-261-1288