

ARIES Socket Datasheet

<http://www.manuallib.com/aries/socket-datasheet.html>

FEATURES

- Correct-A-Chip™ technology solves problems associated with the use of alternate ICs (due to availability, obsolescence, need for better performance, etc.) by eliminating the need for new PCBs.
- Available with either 0.300 [7.62] or 0.600 [15.24] row-to-row spacing.

ManualLib.com collects and classifies the global product instruction manuals to help users access anytime and anywhere, helping users make better use of products.

<http://www.manuallib.com>



Correct-A-Chip™ Socket with Collet Contacts

FEATURES

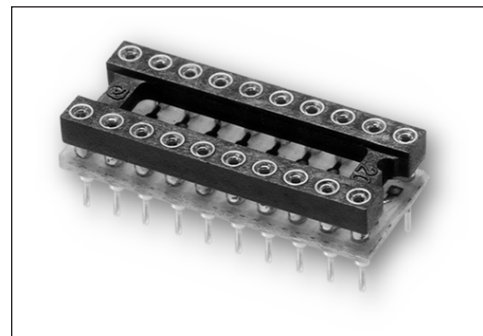
- Correct-A-Chip™ technology solves problems associated with the use of alternate ICs (due to availability, obsolescence, need for better performance, etc.) by eliminating the need for new PCBs.
- Available with either 0.300 [7.62] or 0.600 [15.24] row-to-row spacing.

GENERAL SPECIFICATIONS

- FEMALE SOCKET MATERIAL: black UL 94V-0 glass-filled 4/6 Nylon
- PCB: FR-4, 0.062 [1.56] or 0.094 [2.39] thick
- MALE PIN: Brass 360 1/2-hard per UNS C36000, ASTM B16/B16M
- MALE PIN PLATING: 200μ [5.08μ] Sn/Pb 93/7 per ASTM B579-73 over 100μ [2.54μ] Ni per SEA-AMS-QQ-N-290
- FEMALE PIN BODY PLATING: 10μ [0.254μ] Au per MIL-G-45204 over 100μ [2.54μ] Ni per SEA-AMS-QQ-N-290
- 4-FINGER COLLET CONTACT: BeCu per UNS C17200, ASTM B194-01
- CONTACT PLATING: 10μ [0.25μ] Au per MIL-G-45204 over 50μ [1.27μ] Ni per SEA-AMSQQ-N-290
- MINIMUM CONTACT CURRENT RATING: 1 amp at 5 VDC
- OPERATING TEMPERATURE: 221°F [105°C]
- INSERTION FORCE: 180g/pin; based on 0.018 [0.46] dia. test lead
- WITHDRAWAL FORCE: 90g/pin; based on 0.018 [0.46] dia. test lead
- NORMAL FORCE: 140g/pin; based on 0.018 [0.46] dia. test lead
- SOCKET ACCEPTS: 0.015-0.025 [0.38-0.64] dia. leads, 0.100-0.125 [2.54-3.18] long

MOUNTING CONSIDERATIONS

- SUGGESTED PCB HOLE SIZE: 0.028 ±0.002 [0.71 ±0.05] dia.



CUSTOMIZATION: In addition to the standard products shown on this page, Aries specializes in custom design and production. Special materials, platings, sizes, and configurations can be furnished, depending on the quantity. **NOTE:** Aries reserves the right to change product general specifications without notice.

ORDERING INFORMATION

Consult Factory – Aries will assign a special P/N

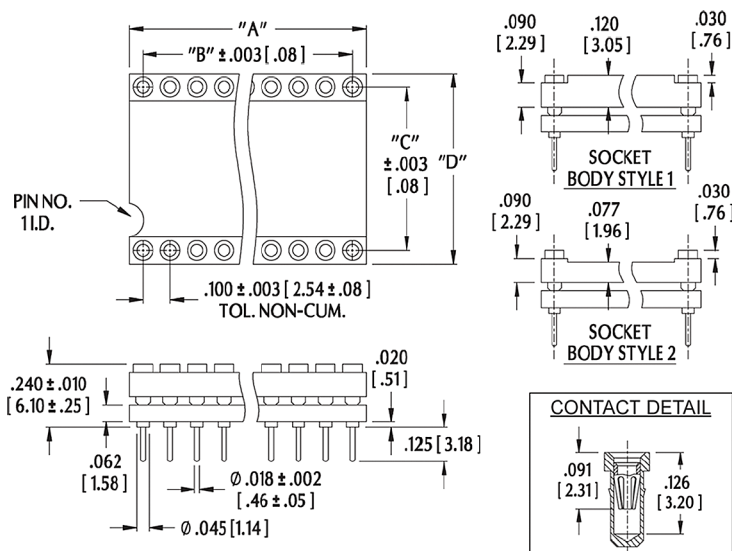
EASY-TO-USE WORKSHEET 18001

ALL DIMENSIONS: INCHES [MILLIMETERS]

ALL TOLERANCES: ±0.005 [0.13] UNLESS OTHERWISE SPECIFIED

CONSULT FACTORY FOR OTHER SIZES AND CONFIGURATIONS

Centers "C"	Dim. "D"	Body Style	Available Sizes
0.300 [7.62]	0.400 [10.16]	2	2 thru 20
		1	22 thru 40
0.600 [15.24]	0.700 [17.78]	2	2 thru 40
		1	42 thru 48



ARIES
ELECTRONICS, INC.

Bristol, PA 19007-6810 USA
TEL (215) 781-9956 • FAX (215) 781-9845
WWW.ARIESELEC.COM • INFO@ARIESELEC.COM

PRINTOUTS OF THIS DOCUMENT MAY BE OUT OF DATE AND SHOULD BE CONSIDERED UNCONTROLLED

18003
Rev. AA