



**Package Contents**

- Broadband Router with 2 Phone Ports
- Power Adapter
- Setup CD with Installation and Trouble Shooting Guide
- Network Cable
- Quick Installation
- Registration Card
- engin User Guide

# Broadband Router

with 2 Phone Ports



**Quick Installation**

Model No. **RT31P2**



There are two ways to configure the Router. Choose one of the following:

- Run the Setup CD-ROM - It is strongly recommended that you use the Setup CD-ROM. Insert the Setup CD-ROM into the CD-ROM drive, and follow the on-screen instructions.
- Use this Quick Installation guide - If you wish, you can use the Router's Web-based Utility. Proceed to Step 1 of this Quick Installation.

## 1 Connect the Router

**A** Make sure that all of your hardware is powered off, including the Router, PCs, and cable or DSL modem.

**B** Connect one end of an Ethernet network cable to one of the numbered ports on the back of the Router. Connect the other end to an Ethernet port on a network device, e.g., a PC, print server, or switch.

Repeat this step to connect more PCs or other network devices to the Router.

**C** If necessary, disconnect the RJ-11 telephone cable of your telephone from the telephone wall jack. Then connect that end to the Router's PHONE 1 port.



**B**



**C**

**NOTE:** Make sure your telephone is set to its tone setting (not pulse)  
**WARNING:** Do NOT connect your telephone cable from the 'phone' port of your Linksys Broadband Router straight into the telephone PSTN wall socket. This may damage your Linksys Broadband Router.

**D** If you have a second engin phone line, repeat step C to connect a telephone or fax machine to the Router's PHONE 2 port.

**E** Connect your cable or DSL modem's Ethernet cable to the Router's Internet port.

**F** Power on the cable or DSL modem.

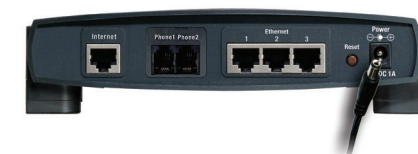
**G** Connect the included power adapter to the Router's Power port, and then plug the power adapter into an electrical outlet.

The Power LED on the front panel will light up as soon as the power adapter is connected properly.

**H** Power on the PC you wish to use to configure the Router.



**E**



**G**

## 2 Configure the Broadband Router

In Step 2, you will need the setup instructions provided by your Internet Service Provider (ISP). If you do not have this information, then contact your ISP before proceeding.

The instructions from your ISP tell you how to set up your PC for Internet access. Because you are now using the Router to share Internet access among several computers, you will use the setup information to configure the Router instead of your PC.

**A** Open your PC's web browser. Enter **http://192.168.15.1** (the Router's default local IP address) in the web browser's Address field. Then press the **Enter** key.

**B** A screen will appear and ask you for a User Name and Password. Enter **admin** (the default) in the *User Name* and *Password* fields. (Later you should set a new password using the Administration tab's *Management* screen. This will help secure access to the Web-based Utility.)

Then click the **OK** button.

**NOTE:** Make sure your PC's Ethernet adapter is set to *obtain an IP address automatically*. For more information, refer to Windows Help.

Address: <http://192.168.15.1/>

**A**



**B**

**C** The Router's Web-based Utility will appear with the *Basic Setup* screen showing.

**D** For the Internet Connection Type setting, six Internet connection types are offered through the drop-down menu. Depending on which connection type you select, the features available on the *Basic Setup* screen will differ. Proceed to the instructions for the connection type you are using.

## 1 Obtain an IP Automatically (DHCP)

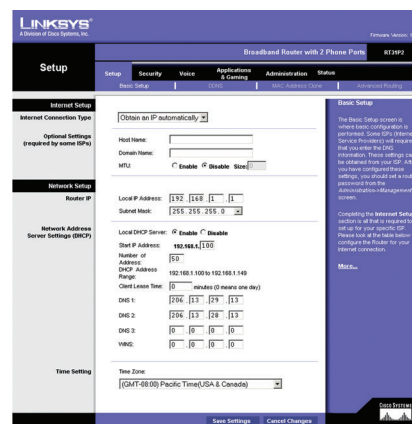
**a** If your ISP says that you are connecting through DHCP or a dynamic IP address from your ISP, then select **Obtain an IP automatically** as the Internet Connection Type.

**b** Click the **Save Settings** button.

## 2 Static IP

**a** If your ISP says that you are connecting through a static or fixed IP address from your ISP, then select **Static IP** as the Internet Connection Type.

**b** Enter the IP Address, Subnet Mask, and Gateway Address provided by your ISP.



## Obtain an IP Automatically

Static IP

IP Address: 0 . 0 . 0 . 0

Subnet Mask: 255 . 255 . 255 . 0

Default Gateway: 0 . 0 . 0 . 0

DNS 1: 0 . 0 . 0 . 0

DNS 2: 0 . 0 . 0 . 0

DNS 3: 0 . 0 . 0 . 0

## Static IP

**c** In the *DNS 1-3* fields, enter the DNS address(es) provided by your ISP. You need to enter at least one DNS address.

**d** Click the **Save Settings** button.

## 3 PPPoE

**a** If your ISP says that you are connecting through PPPoE or if you normally enter a user name and password to access the Internet, then select **PPPoE** as the Internet Connection Type.

**b** Enter the User Name and Password provided by your ISP. (Also enter the Service Name, if required.)

**c** Select **Keep Alive** if you always want to be connected to your ISP, or select **Connect on Demand** if you are charged for the time that you are connected to your ISP.

**d** Click the **Save Settings** button.

**e** Click the **Status** tab and then the **Router** tab. Click the **Connect** button to start the connection.

PPPoE

User Name:

Password:

Service Name:

Connect on Demand: Max Idle Time 5 Min.

Keep Alive: Redial Period 30 Sec.

## PPPoE

## 4 PPTP

PPTP is a service used in Europe and Israel only. If you are using a PPTP connection, check with your ISP for the necessary setup information.

## 5 RAS

RAS is a service used in Singapore only. If you are using a RAS connection, check with your ISP for the necessary setup information.

## 6 Heart Beat Signal

Heart Beat Signal is a service used in Australia only. If you are using a Heart Beat Signal connection, check with your ISP for the necessary setup information.

**E** If requested by your ISP (usually cable ISPs), complete the *Host Name* and *Domain Name* fields. Otherwise, leave them blank.

**F** If you haven't already done so, click the **Save Settings** button. Then close the web browser.

**G** Power your cable or DSL modem off and back on again.

**H** Restart or power on your PCs so they can obtain the Router's new settings.

PPTP

IP Address: 0 . 0 . 0 . 0

Subnet Mask: 255 . 255 . 255 . 0

Default Gateway: 0 . 0 . 0 . 0

User Name:

Password:

Connect on Demand: Max Idle Time 5 Min.

Keep Alive: Redial Period 30 Sec.

## PPTP

RAS (for SingTel)

User Name:

Password:

RAS Plan: 512k Ethernet

Connect on Demand: Max Idle Time 5 Min.

Keep Alive: Redial Period 30 Sec.

## RAS

Heart Beat Signal

User Name:

Password:

Heart Beat Server: 0 . 0 . 0 . 0

Connect on Demand: Max Idle Time 5 Min.

Keep Alive: Redial Period 30 Sec.

## Heart Beat Signal

To test the Router's settings, open your web browser from any computer. In the browser's *Address* field, enter *www.engin.com.au* and press the **Enter** key.

**Congratulations! The installation of the Router is complete.**

**NOTE:** Please visit [engin.com.au](http://engin.com.au) and select "Join Now" to register your Linksys Broadband Router

Address: <http://www.engin.com.au>



The Broadband Phone Company

**LINKSYS**

A Division of Cisco Systems, Inc.

For additional information or troubleshooting help, refer to the User Guide on the Set-up CD-ROM. You can also call or email for further support.

## Linksys

**24-hour Technical Support**  
1800 208 229

**Website**  
[www.linksys.com.au](http://www.linksys.com.au)

## engin

**For engin service enquires call**  
1300 305 000

## Opening Hours

Monday-Friday AEST or AEDT 8am-9pm  
Saturday & Sunday AEST or AEDT 9am-3pm

**Fax Number**  
Customer Service 02 9004 4436

**Website**  
[www.engin.com.au](http://www.engin.com.au)

Linksys is a registered trademark or trademark of Cisco Systems, Inc. and/or its affiliates in the U.S. and certain other countries. Copyright © 2005 Cisco Systems, Inc. All rights reserved.

RT31P2-QI-40514NC JL