

Fiberstars JAZZ™

J400C (COLOR), J400AS (AUTO SYNC)



Owners Manual



Fiberstars
44259 Nobel Drive
Fremont, CA 94538
www.fiberstars.com



CAREFULLY READ AND FOLLOW ALL SAFETY INSTRUCTIONS IN THIS MANUAL AND ON THE LIGHT AND ASSOCIATED EQUIPMENT.

⚠ WARNING **HAZARDOUS VOLTAGE** Incorrectly installed equipment may fail, causing severe injury or property damage.

Have a certified electrician perform all tests before operating equipment.

⚠ CAUTION To prevent the risk of damage or injury, do not operate the light out of water for more than 15 minutes. Allow the light to cool down before installing underwater.

ATTENTION

Fiberstars JAZZ and FX Series Wet-Niche Lighting Fixtures for Swimming pools are now ETL Classified for use with the following manufactures Wet-Niches for use in new Pool construction. PENTAIR, (American) model no. 79206700 (ABS), model no. 7821XXXX (S/S), 7823XXXX (S/S), model no. 620004 (ABS) HAYWARD, model no. SP0607U (ABS, Vinyl) SP0600U (ABS, Concrete)

ETL Classification Report No. 3040481

ATTENTION

FIBERSTARS FX LIGHTS ARE UL LISTED FOR USE IN STA-RITE WET NICHE TYPE FIXTURE ONLY. Model numbers, (S/S) 05161-2352, 05161-2353, 05161-2354, 05161-2355, 05161-2356, 05161-2357, 05161-2358, 05161-2359, 05161-2360, 05161-2361, 05161-2362, 05161-2363, 05161-2364, 05161-2365, 05161-2366, 05161-2367, 05161-2368, 05161-2369, (ABS) 05163-2394, 2395 & 2396

UL File No. E220601

⚠ WARNING **Risk of electrical shock.** Before removing fixture from pool wall, ALWAYS TURN OFF THE POWER at the breaker.

Install this light and light niche in accordance with Article 680 of the National Electrical Code (NEC), in the United States.

Install an approved Ground Fault Circuit Interrupter in the electrical circuit for this light.

All devices in the system must be directly grounded to a positive electrical ground. All devices in the system must meet all applicable code requirements for bonding.

⚠ CAUTION Operating pool light at a reduced voltage will diminish the lighting of your pool during nighttime use. Failure to provide adequate lighting may result in swimming and diving hazards which can cause severe injury or death

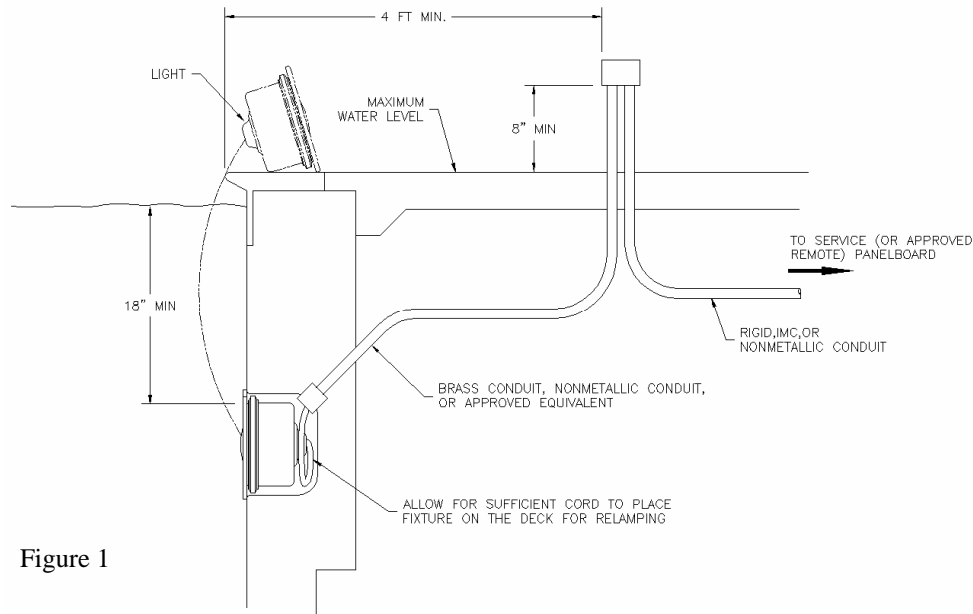


Figure 1

Install fixture in a vertical pool or spa wall – not in floor. Failure to install the fixture properly could result in personal injury and/or property damage.

Except when the fixture is installed in an area of the swimming pool that is not used for swimming and the lens is adequately guarded to keep any person from contacting it, the fixture shall be installed in or on the wall of the pool with the top of the lens not less than 18 in. below the normal water level of the pool; see Figure 1.

The junction box must be located:

- At least 4' from the perimeter of the pool (unless separated from the pool by a solid fence, wall or other permanent structure,
- At least 8" above maximum water level,
- At least 4" above the deck or ground level.

Junction boxes should be located off the walkway around the pool and given additional protection by installing them next to a fence, building, or other permanent structure. Make sure that the installation is in compliance with local codes, and the NEC.

A Ground Fault Circuit Interrupter (GFCI) and an appropriately rated circuit breaker shall be installed in the branch circuit supplying power to fixtures so that there is no shock hazard during re-lamping.

Lamp Housing Installation

⚠ CAUTION **Glass breakage hazard.** Do not push off from the poolside against the light.

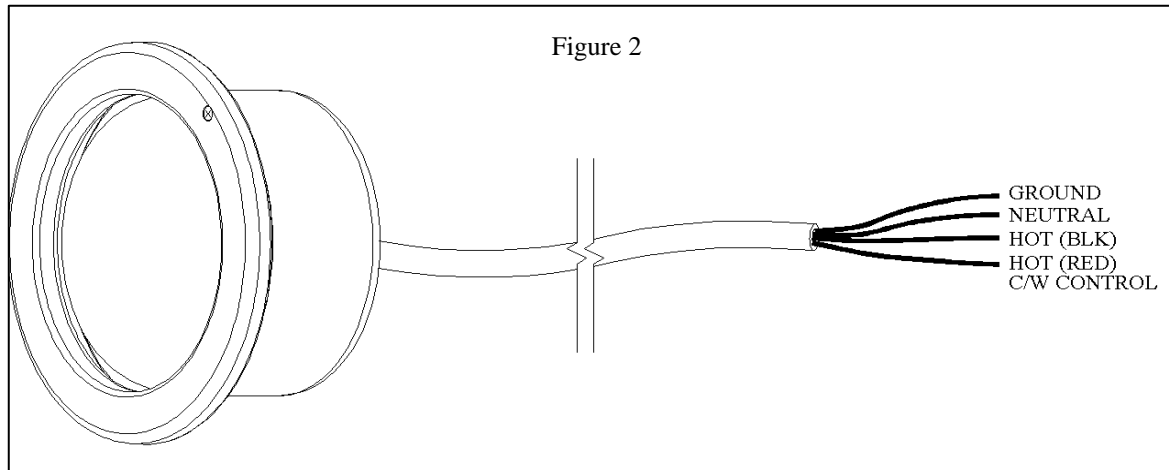
NOTE: For the J400C and J400AS color versions 4 wires must be supplied to the junction box from the power supply.

Light Fixture Installation

1. Before installing light fixture, make sure power to light is off.
2. Feed cord through niche and conduit, while light fixture is on deck area right above the niche. Feed cord to junction box leaving enough cord, about 3' to allow fixture to be placed on deck to allow relamping.

3. Make connections in the junction box (see Figure 2).

NOTE: The Auto Sync color wheel control wires must all be operated by one switch or relay for the synchronization to work.



4. Insert cord into the niche and place the lamp housing in the niche. Be sure that the locator tab on the bottom of the lamp housing is in the notch at the bottom of the niche.
5. Insert the top screw into top hole on niche and tighten.

MAINTENANCE

⚠ WARNING **Hazardous voltage.**

⚠ WARNING **Electrical shock hazard.** Before removing fixture from pool wall, ALWAYS TURN OFF THE POWER at the breaker. Installation and maintenance of this circuit, the light, light niche, and any other accessories attached to this circuit must be performed by a licensed electrician. The complete electrical system must be installed, tested, and approved by a licensed electrician before it is placed in operation.

⚠ WARNING **Risk of cuts, burns, and electrical shock.** Avoid direct impacts on glass lens. Do not install damaged or broken lens.

1. Be sure that the power is off. Allow the lamp to cool before re-lamping.
2. Loosen the captive leader screw from the top of the fixture trim ring.

NOTICE: The screw in the trim rim may be recessed.

3. Remove the lamp housing and place on the pool deck.
4. Remove screw from clamp.
5. Replace gasket. To reassemble the lens assembly to the lamp housing, reverse the disassembly process. Be sure that the lamp housing is clean, dry, and free of all traces of moisture, before sealing the fixture.
6. Insert cord into niche and place the lamp housing back in the niche. Be sure to align the locator tab at the bottom of the lamp housing with the notch in the bottom of the niche.
7. Fasten the lamp housing into the niche using the captive leader screw at the top of the trim ring.

Risk of Electrical Shock or Electrocution.



This fixture must be properly installed in accordance with the National Electrical Code and all applicable local codes and ordinances by a certified or licensed Electrician. Failure to do so may result in serious injury to occupants, installers, or cause property damage due to the resulting electrical hazards. Read and follow all instructions.

Volts and Amp rating for J400C and J400AS are as follows, 120 Volts, 84 Watts max., 2.0 Amps

Control Options for Jazz models J400C.

NOTE: **Metal Halide is not dimmable!**

A. Switch Controlled.

1. The J400C Jazz color light versions must be controlled with two switches. The J400C have a 4th wire for color wheel control, to start and stop the color wheel.
2. For J400AS Auto Sync installations (multiple lights synchronized to change color at the same time) use the appropriate number of power switches. Each JAZZ light has a run current of 2.0 amps. Only one switch is required for color wheel control. All color wheel control wires for Auto Sync units must be run to one switch.

B. Jandy RS Controlled or comparable control system.

1. The J400C Jazz color version requires two **NON -Dimming** relays. One relay for the lamp and one relay for color wheel control.
2. For J400AS JAZZ Auto Sync installations (multiple lights synchronized to change color at the same time) use the appropriate number of power **NON-Dimming** power relays. Only one **NON-Dimming** relay is required for color wheel control. All color wheel control wires for Auto Sync units are run to one common relay.

C. Fiberstars RM-400 Wireless Remote Control (**Maximum 2 units per RM-400**)

D. SPECIAL NOTE FOR X-10 CONTROL

The lowest **possible** signal that can make a module respond properly is 150mV. Please refer to the X-10 installation manual. Contact X10PRO for troubleshooting operation.

J400AS Auto Sync Operation

- A. Before operating, make sure both the power and color wheel switches are in the off position. (If the color wheel switch is on when the power switch is activated the JAZZ units will not sync.)
1. Switch the power on. (It will take 2-3 minutes for the Metal Halide lamp to come to its full level of brightness.) The Auto Sync units color wheels will rotate to their home position on White. This action takes about 15 seconds.
 2. Switch on the color wheels. The JAZZ AS units are now in sync.
 3. When shutting down the system always turn the color wheels off. This will allow the color wheels to reset to their home position the next time the lights are turned on.

Item No.	Part No.	Description
1	J10-1000	Color Wheel (non-sync)
2	J20-2000 (J200)	Lamp Kit, 50W Metal Halide
	J20-4000 (J400)	(Includes replacement gasket #7)
3	J30-3000	Pilot Screw, with captive neoprene washer
4	J30-4000	Face ring, Stainless Steel
5	J30-5000	Compression Clamp
6	J30-6000	Lens, Fiberstars , 8-3/8 in. dia., tempered
7	J30-7000	Gasket, Lens

SAVE THESE INSTRUCTIONS.

